

# **BALDOR**® • *RELIANCE*

## Product Information Packet

# CEM3218T

5HP, 1750RPM, 3PH, 60HZ, 184TC, 3640M, OPSB, F1

Copyright © All product information within this document is subject to Baldor Electric Company copyright © protection, unless otherwise noted.

Part Detail									
Revision:	B	Status:	PRD/A	Change #:		Proprietary:	No		
Type:	AC	Prod. Type:	3640M	Elec. Spec:	36WGS270	CD Diagram:			
Enclosure:	OPSB	Mfg Plant:		Mech. Spec:	36B102	Layout:			
Frame:	184TC	Mounting:	F1	Poles:	04	Created Date:	08-04-2010		
Base:	RG	Rotation:	R	Insulation:	F	Eff. Date:	07-16-2012		
Leads:	9#16	Literature:		Elec. Diagram:		Replaced By:			
Nameplate NP1259L									
CAT.NO.	CEM3218T								
SPEC.	36B102S270G1								
HP	5								
VOLTS	208-230/460								
AMP	14-13.2/6.6								
RPM	1750								
FRAME	184TC	HZ	60	PH	3				
SER.F.	1.15	CODE	J	DES	B	CL	F		
NEMA-NOM-EFF	89.5	PF	80						
RATING	40C AMB-CONT								
CC	010A	USABLE AT 208V	14						
DE	6206	ODE	6205						
ENCL	OPSB	SN							

Parts List		
Part Number	Description	Quantity
SA201000	SA 36B102S270G1	1.000 EA
RA188305	RA 36B102S270G1	1.000 EA
S/P107-000-001	SUPER E PROC'S-FS & WS PLTS-POLYREX EM G	1.000 EA
36CB3004	36 CB CASTING W/1.09 DIA LEAD HOLE @ 6:0	1.000 EA
51XB1016A08	10-16X 1/2HXWSSLD SERTYB	2.000 EA
11XW1032G06	10-32 X .38, TAPTITE II, HEX WSHR SLTD U	1.000 EA
HW3001B01	003SS CUP WASHER, FOR #8 SCREW	1.000 EA
36EP3200A01SP	FR ENDPLATE, MACH	1.000 EA
HW4500A01	1641B(ALEMITE)400 UNIV, GREASE FITT	1.000 EA
HW5100A05	WVY WSHR F/205 & 304 BRGS	1.000 EA
36EP3403A02	PU ENDPLATE, MACH	1.000 EA
HW4500A01	1641B(ALEMITE)400 UNIV, GREASE FITT	1.000 EA
10XN2520A28	1/4-20X 1 3/4 HEX HD	4.000 EA
HW1001A25	LOCKWASHER 1/4, ZINC PLT .493 OD, .255 I	4.000 EA
36CB4516	36 LIPPED CB LID	1.000 EA
51XW0832A07	8-32 X .44, TAPTITE II, HEX WSHR SLTD SE	4.000 EA
HW2501E16	3KEY, 1/4 SQ X 1.750	1.000 EA
HA7000A02	KEY RETAINER RING, 1 1/8 DIA, 1 3/8 DIA	1.000 EA
85XU0407S04	4X1/4 U DRIVE PIN STAINLESS	2.000 EA
HW3200A01	3/8-16X3/4 I-BLT WELDED F/S	1.000 EA
MJ1000A75	GREASE, POLYREX EM EXXON	0.050 LB
MG1000Y03	WILKO 689.710 GOLD PAINT SUPER E	0.022 GA
LB1115	LABEL,LIFTING DEVICE	1.000 EA
HA3101A28	THRUBOLT 1/4-20 X 12.500 OHIO ROD	4.000 EA

Parts List (continued)		
Part Number	Description	Quantity
36AD2004A01	BAFFLE PLATE,MOD 36-SLTD BAND MTRS DELTA	2.000 EA
LC0005E01	CONN.DIA./WARNING LABEL (LC0005/LB1119)	1.000 EA
LB1125C02	SUPER-E (STOCK CTN LABEL SUPER-E WITH FL	1.000 EA
LB1357	ENERGY GUIDE LABEL (BOX LABEL)	1.000 SH
NP1259L	ALUM SUPER-E UL CSA-EEV CC NEMA PREMIUM	1.000 EA
36PA1001	PACKAGING GROUP	1.000 EA

**Performance Data at 460V, 60Hz, 5.0HP (Typical performance - Not guaranteed values)**

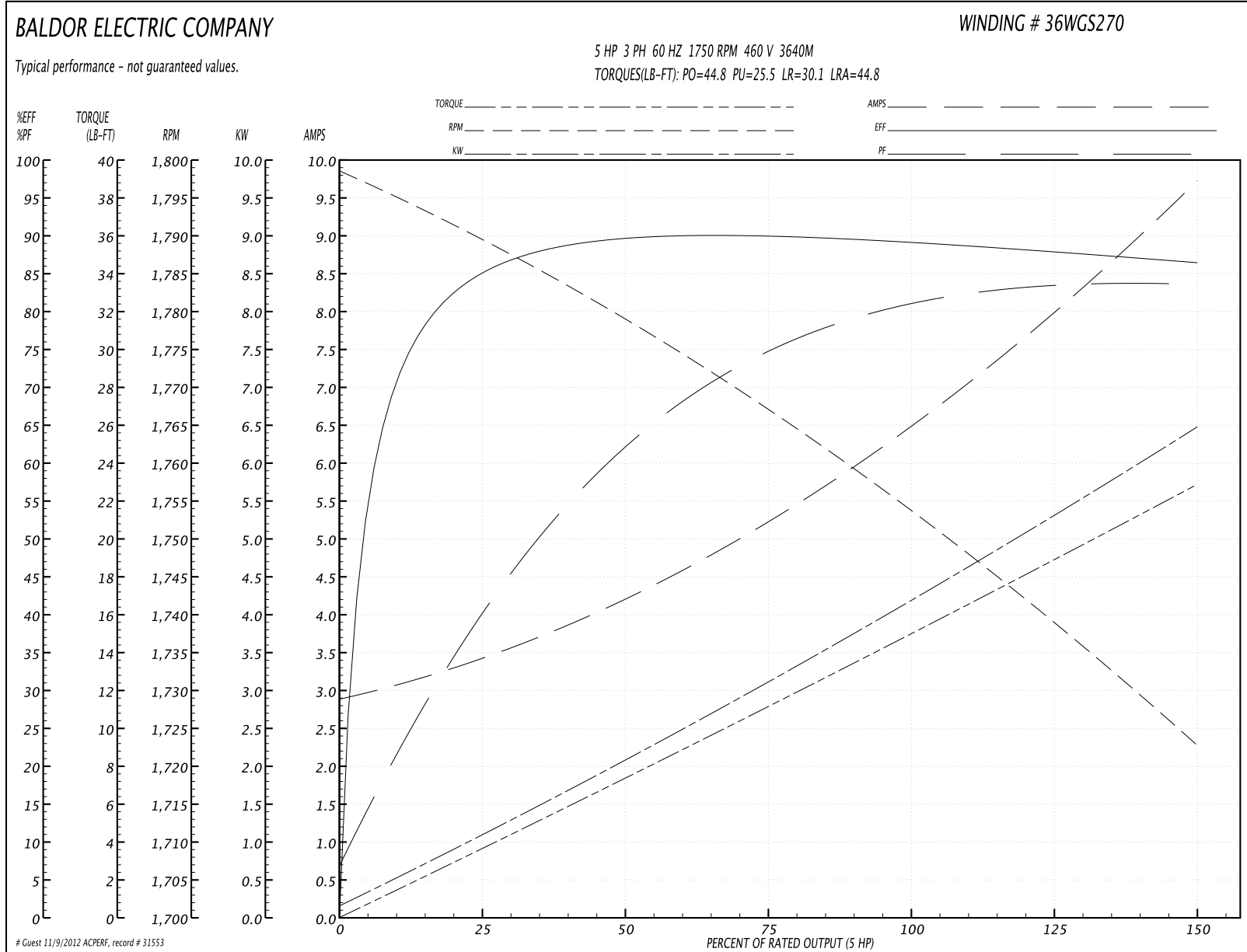
**General Characteristics**

<b>Full Load Torque:</b>	15.0 LB-FT	<b>Start Configuration:</b>	DOL
<b>No-Load Current:</b>	2.97 Amps	<b>Break-Down Torque:</b>	44.8 LB-FT
<b>Line-line Res. @ 25°C.:</b>	2.632 Ohms A Ph / 0.0 Ohms B Ph	<b>Pull-Up Torque:</b>	25.5 LB-FT
<b>Temp. Rise @ Rated Load:</b>	44 C	<b>Locked-Rotor Torque:</b>	30.1 LB-FT
<b>Temp. Rise @ S.F. Load:</b>	56 C	<b>Starting Current:</b>	44.8 Amps

**Load Characteristics**

% of Rated Load	25	50	75	100	125	150	S.F.
<b>Power Factor:</b>	42.0	64.0	75.0	80.0	83.0	84.0	82.0
<b>Efficiency:</b>	85.4	89.7	90.2	89.5	88.2	86.4	88.7
<b>Speed:</b>	1789.2	1778.5	1766.9	1753.8	1739.5	1722.1	1745.0
<b>Line Amperes:</b>	3.33	4.14	5.26	6.59	8.05	9.68	7.47

Performance Graph at 460V, 60Hz, 5.0HP Typical performance - Not guaranteed values



**Performance Data at 460V, 60Hz, 5.0HP (Typical performance - Not guaranteed values)**

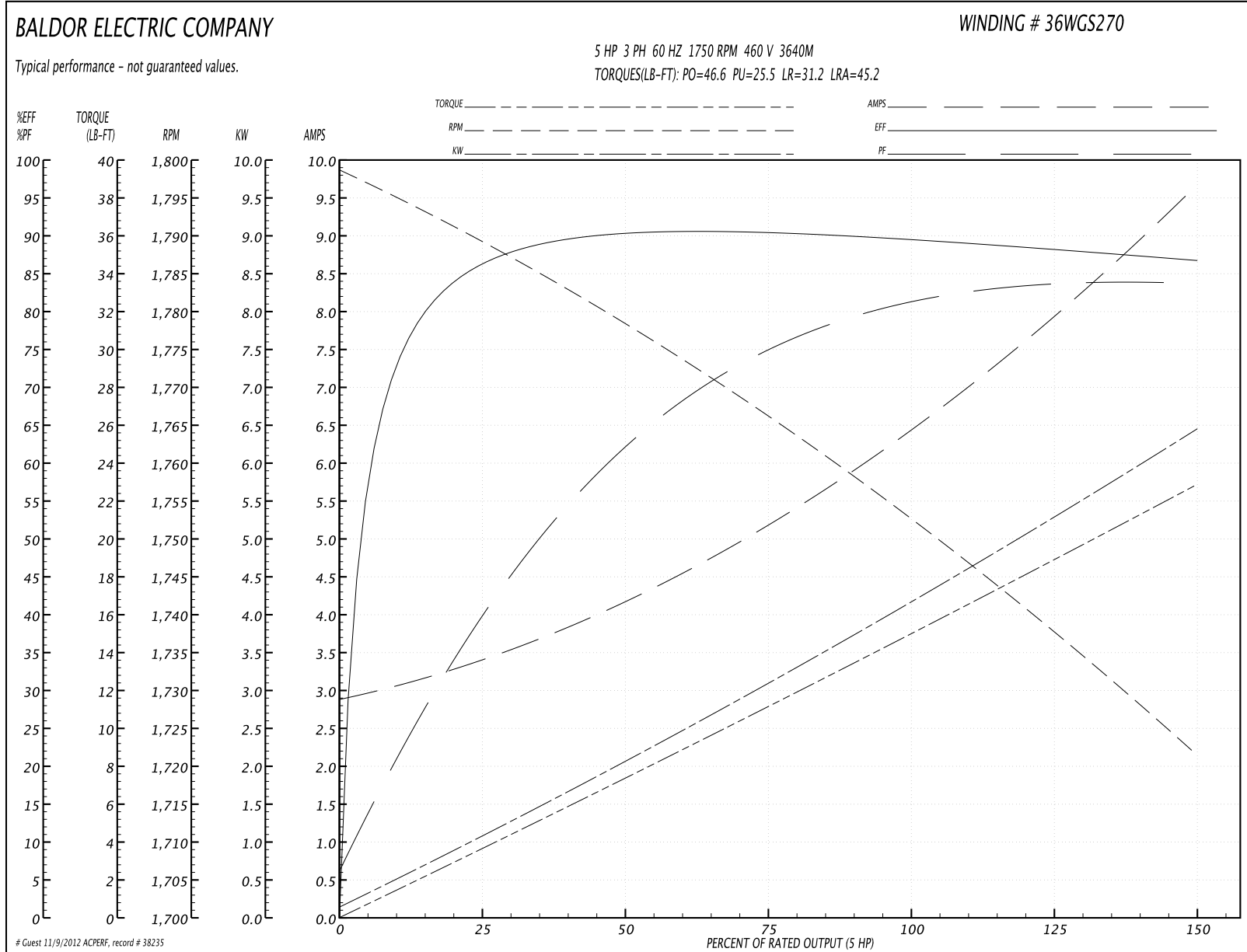
**General Characteristics**

<b>Full Load Torque:</b>	15.0 LB-FT	<b>Start Configuration:</b>	DOL
<b>No-Load Current:</b>	2.96 Amps	<b>Break-Down Torque:</b>	46.6 LB-FT
<b>Line-line Res. @ 25°C.:</b>	2.6272 Ohms A Ph / 0.0 Ohms B Ph	<b>Pull-Up Torque:</b>	25.5 LB-FT
<b>Temp. Rise @ Rated Load:</b>	45 C	<b>Locked-Rotor Torque:</b>	31.2 LB-FT
<b>Temp. Rise @ S.F. Load:</b>	56 C	<b>Starting Current:</b>	45.2 Amps

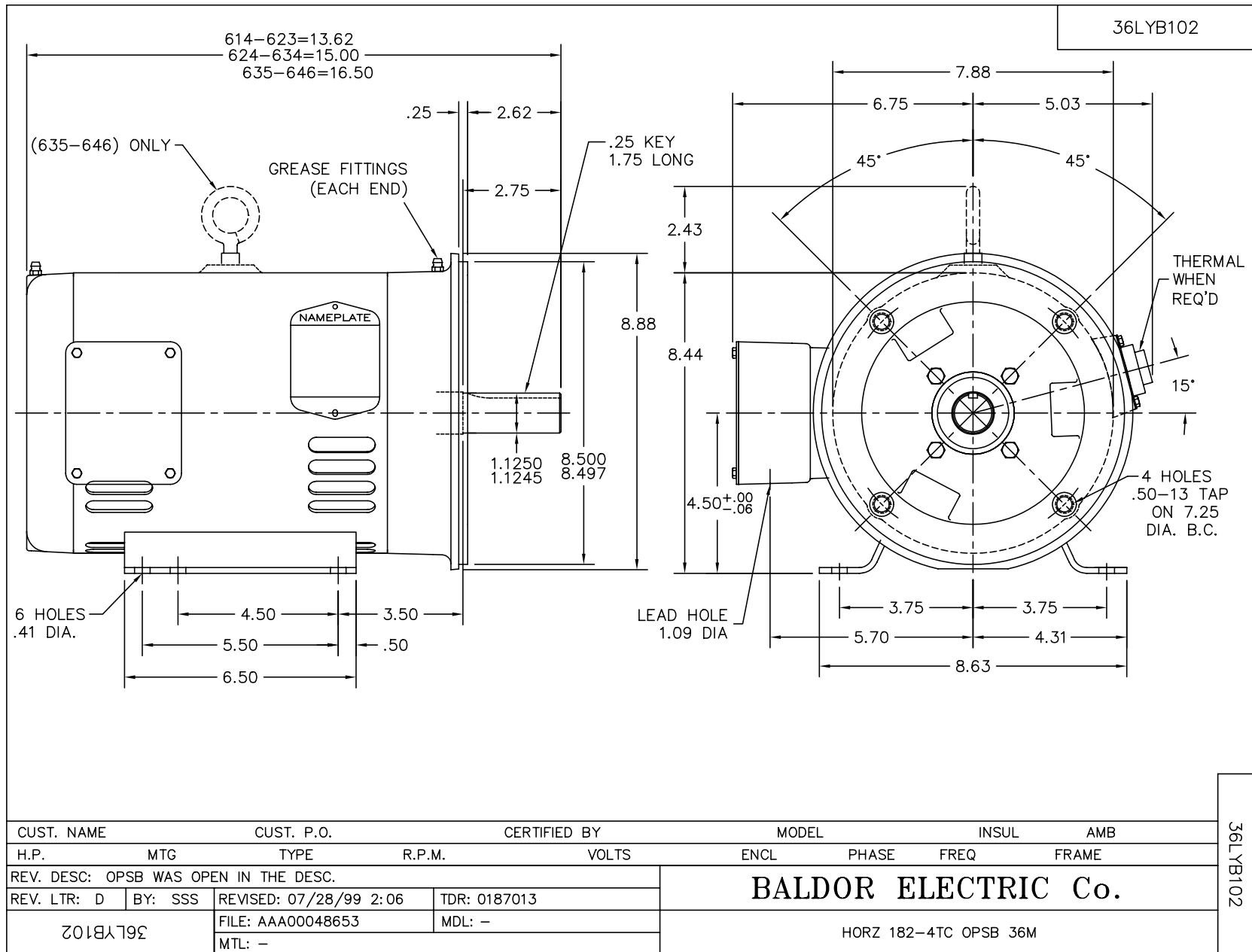
**Load Characteristics**

<b>% of Rated Load</b>	<b>25</b>	<b>50</b>	<b>75</b>	<b>100</b>	<b>125</b>	<b>150</b>	<b>S.F.</b>
<b>Power Factor:</b>	42.0	64.0	75.0	80.0	83.0	84.0	82.0
<b>Efficiency:</b>	86.1	90.2	90.5	89.7	88.3	86.6	88.9
<b>Speed:</b>	1788.8	1778.1	1766.0	1752.7	1737.8	1721.1	1744.0
<b>Line Amperes:</b>	3.33	4.11	5.22	6.52	8.02	9.62	7.42

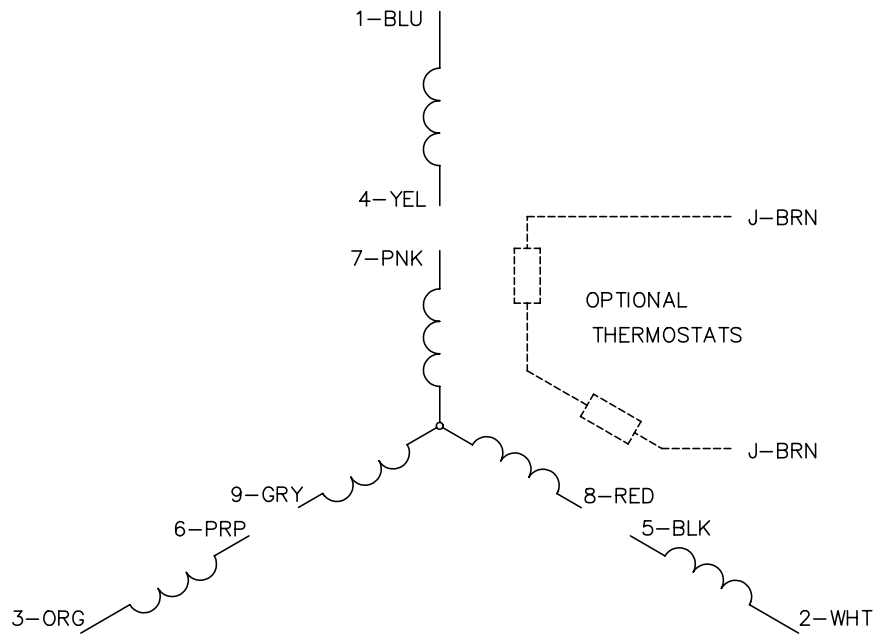
Performance Graph at 460V, 60Hz, 5.0HP Typical performance - Not guaranteed values



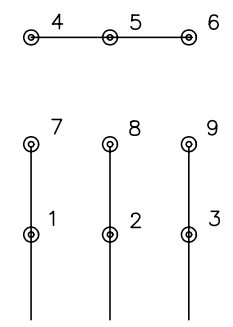




CD0005

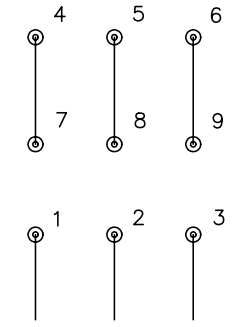


LOW VOLTAGE  
(2Y)



LINE

HIGH VOLTAGE  
(1Y)



LINE

NOTES:

1. INTERCHANGE ANY TWO LINE LEADS TO REVERSE ROTATION.
2. OPTIONAL THERMOSTATS ARE PROVIDED WHEN SPECIFIED.
3. ACTUAL NUMBER OF INTERNAL PARALLEL CIRCUITS MAY BE A MULTIPLE OF THOSE SHOWN ABOVE.
4. LEAD COLORS ARE OPTIONAL. LEADS MUST ALWAYS BE NUMBERED AS SHOWN.

REV. DESC: REVISE TO SHOW OPTIONAL COLORS			
REV. LTR: E	BY: JLP	REVISED: 01/19/99 10:15	TDR: 0171435
90000		FILE: AAA00005140	MDL: -
		MTL: -	

**BALDOR ELECTRIC Co.**

3PH, DV, 9 LEADS

CD0005