

BALDOR® • *RELIANCE*

Product Information Packet

CEM4310T

60HP,3550RPM,3PH,60HZ,364TSC,TEFC

Copyright © All product information within this document is subject to Baldor Electric Company copyright © protection, unless otherwise noted.

Part Detail									
Revision:	F	Status:	PRD/A	Change #:		Proprietary:	No		
Type:	AC	Prod. Type:	A36048M	Elec. Spec:	A36WG1724	CD Diagram:			
Enclosure:	TEFC	Mfg Plant:		Mech. Spec:		Layout:			
Frame:	364TSC	Mounting:	F1	Poles:	02	Created Date:	01-13-2011		
Base:		Rotation:	R	Insulation:	B	Eff. Date:	06-20-2012		
Leads:	3#4,6#6	Literature:		Elec. Diagram:		Replaced By:			
Nameplate NP2383L									
CAT.NO.	CEM4310T	SPEC NO.	P36G4676						
HP	60	AMPS	135/67.3	VOLTS	230/460	DESIGN	B		
FRAME	364TSC	RPM	3560	HZ	60	AMB	40	SF	1.15
DRIVE END BEARING	65BC03J30X	PHASE	3	DUTY	CONT	INSUL.CLASS	F		
OPP D.E. BEARING	65BC03J30X	TYPE	P	ENCL	TEFC	CODE	F		
SER.NO.		POWER FACTOR	89	NEMA-NOM-EFFICIENCY	93.6				
		MAX CORR KVAR	08.7	GUARANTEED EFFICIENCY	92.4				
NEMA NOM/CSA QUOTED EFF									
		MOTOR WEIGHT							

Parts List		
Part Number	Description	Quantity
SA214906	SA P36G4676	1.000 EA
RA202107	RA P36G4676	1.000 EA
421948032	LABEL, MYLAR	1.000 EA
613-6PU	N/P (RELEASE QTY 10,000)	1.000 EA
000692000VD	N/P (REL QTY 4000)	1.000 EA
NP2383L	SUPER-E ,SS, CC, CSA-C US, CSA EEV	1.000 EA
085922073B	BRKT 360 085922072WCC KB	1.000 EA
415072001B	CLAMP	1.000 EA
078559001A	+FANCV - 360	1.000 EA
034180012DA	KEY 1X4X1/4X1-1/2 L	1.000 EA
702675001C	FAN 360	1.000 EA
004824015A	GREASE POLYREX EM	0.540 LB
032018012DK	HHCS 1/2-13X1-1/2 PLTD.	4.000 EA
032018008AK	HHCS 1/4-20X1 PLATED	4.000 EA
032018024CK	HHCS 3/8-16X3 PLTD.	3.000 EA
415096002A	CPLG 1/8 HEX TYPE	1.000 EA
410700004F	WSHR	1.000 EA
035000001G	GITS GRS CUP,ODE	1.000 EA
034530052AB	P/NIP 1/8X6-1/2 GALV.	1.000 EA
034690001AB	SQHDPLG, COND	1.000 EA
034600001AA	BUSH 1/4TO1/8 BLACK	1.000 EA
034690001AB	SQHDPLG, COND	1.000 EA
034600001AA	BUSH 1/4TO1/8 BLACK	1.000 EA
085922070B	BRKT 360 085922069WCA	1.000 EA

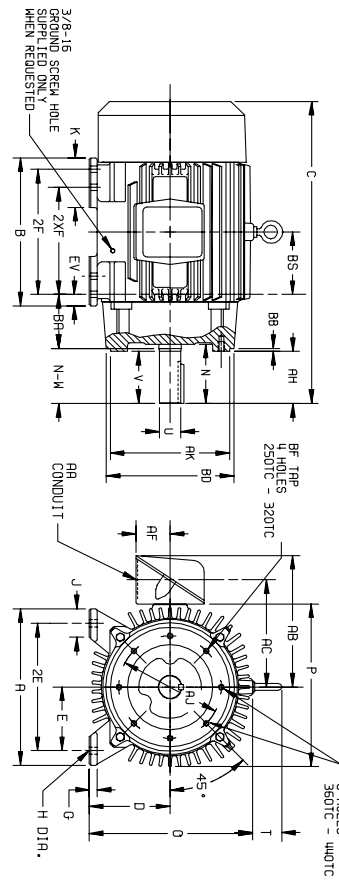
Parts List (continued)		
Part Number	Description	Quantity
032018012DK	HHCS 1/2-13X1-1/2 PLTD.	4.000 EA
032018024CK	HHCS 3/8-16X3 PLTD.	3.000 EA
035000001G	GITS GRS CUP,ODE	1.000 EA
077176000L	C/BOX, PAINTED 360-400	1.000 EA
077176001A	CBOXC, PAINTED 360-400	1.000 EA
043292000AJ	GASK 320-400	1.000 EA
402731001A	GASK 360-440	1.000 EA
418150003A	GREASE FITTING CAP	1.000 EA
MG1000Y03	WILKO 689.710 GOLD PAINT SUPER E	0.250 GA
033775004EA	DRSCR #6-1/4 304 S.S.	2.000 EA
032018005AK	HHCS 1/4-20X5/8 PLATED	4.000 EA
032018008CK	HHCS 3/8-16X1L PLATED	4.000 EA
035000001A	ALFTG 1/8" 1610-BL	1.000 EA
415000003D	T/LUG 897-777 KPA25/G16	1.000 EA
406099000A	PLUG - FAN COVER 320-440	1.000 EA
033512004LB	HHTTS 1/4-20X1/2 PLTD.	1.000 EA
035000001A	ALFTG 1/8" 1610-BL	1.000 EA
418150003A	GREASE FITTING CAP	1.000 EA
034180016GA	KEY 1/2X1/2X2 L	1.000 EA
LB1346	LABEL,SUPER-E GP(4X4)	1.000 EA
14PA1000	PACKAGING 314 GROUP COMBINED PRINT	1.000 EA

611740-003-SHI

DUTY MASTER ALTERNATING CURRENT MOTORS

ENCLOSURE: TOTALLY ENCLOSED
MOUNTING: FOOT, NEMA "C" FACE
FRAMES 250TC THRU 440TC

SQUIREL-CAGE INDUCTION
COOLING: FAN COOLED



DIMENSIONS ARE IN INCHES. SEE SHEET 2 FOR DIMENSIONS IN MILLIMETERS

FRAME	A	D(2)	E	G	H	J	K	EV	O	P	T	AA	AB	AC	AF	BA	BB	BD	BF	WHS	DEPTH	AJ	AK	
254TC-256TC	12.50	6.25	5.00	.75	1.56	2.50	---	1.00	13.25	13.25	2.44	1-1/4	10.75	8.75	2.50	4.75	2.5	9.00	1/2-13	.75	7.25	8.50		
254TC	13.75	7.00	5.50	.75	1.56	2.50	---	1.00	14.75	14.88	2.44	1-1/4	10.00	9.19	4.75	2.5	11.25	1/2-13	.75	9.00	10.500			
284TC-286TC	15.50	8.00	6.25	.88	1.69	2.75	4.50	---	14.75	14.88	2.44	2	15.19	11.44	4.28	5.25	13.12	5/8-11	.94	11.00	12.500			
284TC	17.00	9.00	7.00	.88	1.69	2.75	3.88	---	16.50	16.69	1.70	2.44	18.06	14.00	5.38	5.88	12.50	5/8-11	.94	11.00	12.500			
364TC-365TC	19.00	10.00	8.00	1.12	.81	3.25	4.62	1.13	21.31	22.50	2.94	3	19.31	15.28	5.38	6.62	15.12	5/8-11	.94	11.00	12.500			
404TC-405TC	21.00	11.00	9.00	1.12	.81	3.25	5.25	---	23.38	25.25	3.25	3	23.38	18.12	6.50	7.50	16.75	5/8-11	.94	14.00	16.000			
444TC-445TC	21.00	11.00	9.00	1.12	.81	3.25	5.25	---	23.38	25.25	3.25	3	23.38	18.12	6.50	7.50	16.75	5/8-11	.94	14.00	16.000			

FRAME	SIZE	C	BS	B	ZF	(4) 2XF	N	AH	N-W(7)	U(3)	V	SO.	LGTH.	WEIGHT (LBS.) (5)
254TC	25.06	5.00	12.00	---	8.25	4.06	3.75	4.00	1.625	3.75	3.75	2.88	3.15	3.15
256TC	25.06	5.00	12.00	10.00	---	4.06	3.75	4.00	1.625	3.75	3.75	2.88	3.25	3.25
284TC	27.44	5.50	13.00	---	9.50	5.00	4.38	4.62	1.875	4.38	5.00	3.25	4.45	4.45
284TC	26.06	5.50	13.00	---	9.50	5.00	3.25	1.625	3.00	3.75	1.88	4.45	4.45	4.45
286TC	27.44	5.50	13.00	11.00	---	5.00	4.38	4.62	1.875	4.38	5.00	3.25	4.60	4.60
286TC	26.06	5.50	13.00	11.00	---	5.00	3.25	1.625	3.00	3.75	1.88	4.60	4.60	4.60
324TC	30.44	6.00	14.75	---	10.50	5.62	5.00	5.25	2.125	5.00	5.00	3.88	5.55	5.55
324TC	28.94	6.00	14.75	---	10.50	5.62	5.00	5.25	2.125	5.00	5.00	3.88	5.95	5.95
326TC	30.44	6.00	14.75	12.00	---	5.62	5.00	5.25	2.125	5.00	5.00	3.88	5.95	5.95
326TC	28.94	6.00	14.75	12.00	---	5.62	5.00	5.25	2.125	5.00	5.00	3.88	5.95	5.95
364TC	33.44	6.12	15.00	---	11.25	6.25	5.88	2.375	2.375	5.62	6.25	4.25	8.15	8.15
364TC	31.71	6.12	15.00	---	11.25	6.25	5.88	2.375	1.875	5.62	6.25	2.00	8.09	8.09
365TC	33.44	6.12	15.00	12.25	---	6.25	5.88	2.375	3.50	5.62	6.25	4.25	8.55	8.55
365TC	31.71	6.12	15.00	12.25	---	6.25	5.88	2.375	3.50	5.62	6.25	2.00	8.49	8.49
404TC	35.31	6.88	16.00	---	12.25	4.50	4.00	4.25	2.875	4.00	5.00	3.75	11.65	11.65
404TC	35.31	6.88	16.00	---	12.25	4.50	4.00	4.25	2.875	4.00	5.00	3.75	11.65	11.65
405TC	35.31	6.88	16.00	---	12.25	4.50	4.00	4.25	2.875	4.00	5.00	3.75	11.66	11.66
405TC	35.31	6.88	16.00	13.75	---	4.50	4.00	4.25	2.875	4.00	5.00	3.75	11.98	11.98
444TC	44.62	8.25	19.00	---	14.50	5.19	4.50	5.19	3.375	4.50	6.25	6.88	16.08	16.08
444TC	44.62	8.25	19.00	---	14.50	5.19	4.50	5.19	3.375	4.50	6.25	6.88	15.92	15.92
445TC	44.62	8.25	19.00	16.50	---	6.94	8.25	8.50	3.375	8.25	8.75	6.88	17.98	17.98
445TC	40.88	8.25	19.00	16.50	---	6.94	8.25	8.50	3.375	8.25	8.75	6.88	17.82	17.82

- (1) SPECIAL DIMENSIONS APPLYING TO THIS ORDER ON THIS LINE.
 - (2) "D" VARIES
250TC - 320TC +.00, -.03
360TC - 440TC +.00, -.06
HP TO 1.625 DIA. +.000, -.0005
 - (3) "J" VARIES
1.625 AND LARGER +.000, -.001.
 - (4) ALL FRAMES HAVE EIGHT MOUNTING HOLES FOR DUAL MOUNTING.
 - (5) MOTOR WEIGHTS MAY VARY BY 1% DEPENDING UPON RATING.
 - (6) "AK" VARIES
250TC - 280TC +.000, -.003
320TC - 440TC +.000, -.005
 - (7) "N," "W" VARIES +.00, -.25.
- CONDUIT BOX LOCATED ON OPPOSITE SIDE WHEN F=2-W-1,
W=4-N-S-W-7, OR C=1 MOUNTING IS SPECIFIED.

IF MOUNTING CLEARANCE DETAILS ARE REQUIRED, CONSULT
FACTORY.

MAXIMUM PERMISSIBLE SHAFT RUNOUT WHEN MEASURED
AT END OF STD. SHAFT EXTENSION IS .002 T.I.R. UP TO
AND INCLUDING 1.625 DIA. AND .003 T.I.R. 1.625 DIA.
TO 5 INCH DIA.

FACE RUNOUT AND
ECCENTRICITY
250TC - 280TC INCL. .004 MAX. T.I.R.
320TC - 440TC INCL. .007 MAX. T.I.R.

FRAME _____ TYPE _____ CERTIFIED FOR _____
ORDER _____ ITEM _____ HP _____ RPM _____ PH _____ HZ _____ VOLTS _____
RELIANCE SALES ORDER _____ APPROVED BY _____ DATE _____

HHS-300-0471119

CUSTOMER IS RESPONSIBLE FOR DETERMINING THAT MOTOR PERFORMANCE IS SUITABLE IN THE APPLICATION.

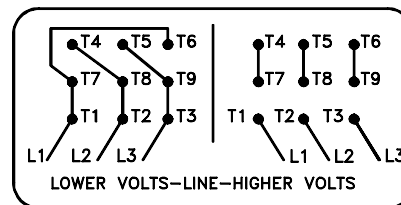
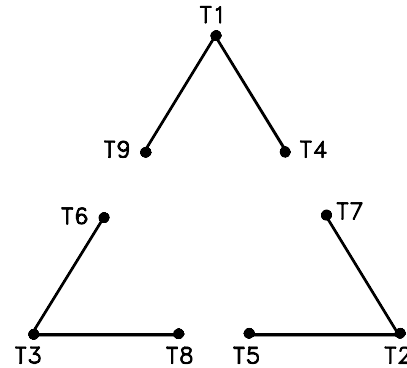
REV. DESC: REMOVEING TITLE BLOCK	VERSION: 01	TDR: 000000441900
REV. LTR: A	REVISED: 09:15:38 08/28/2007	BY: RAGRHX
FILE: \RAG\00003\380		
MTL: -		

Baldor • Dodge • Reliance

DIM SHEET 250TC THRU 440TC

416820-002

A-C MOTOR
 CONNECTION DIAGRAM
 STANDARD 9 LEAD DELTA-CONNECTED



(N.P. 1575-B)

416820-002

REV. DESC: LOADED TO BUS, C/R 335225		
REV. LTR: -	VERSION: 00	TDR: 000000538207
FILE: \MGA\00000\661	REVISED: 10:47:51 04/30/2010	
MTL: -	BY: RAGRA	

BALDOR

CONN DIAG - STANDARD 9 LEAD, DELTA-CONNECTED

SH 1 of 1