

BALDOR® • *RELIANCE*

Product Information Packet

CESSWDM3709T

7.5HP,3500RPM,3PH,60HZ,213TC,3735M,TEFC

Copyright © All product information within this document is subject to Baldor Electric Company copyright © protection, unless otherwise noted.

Part Detail							
Revision:	M	Status:	PRD/A	Change #:		Proprietary:	No
Type:	AC	Prod. Type:	3735M	Elec. Spec:	37WGT384	CD Diagram:	
Enclosure:	TEFC	Mfg Plant:		Mech. Spec:	37J639	Layout:	
Frame:	213TC	Mounting:	F1	Poles:	02	Created Date:	07-19-2006
Base:	RG	Rotation:	R	Insulation:	F	Eff. Date:	08-01-2012
Leads:	9#14	Literature:		Elec. Diagram:		Replaced By:	

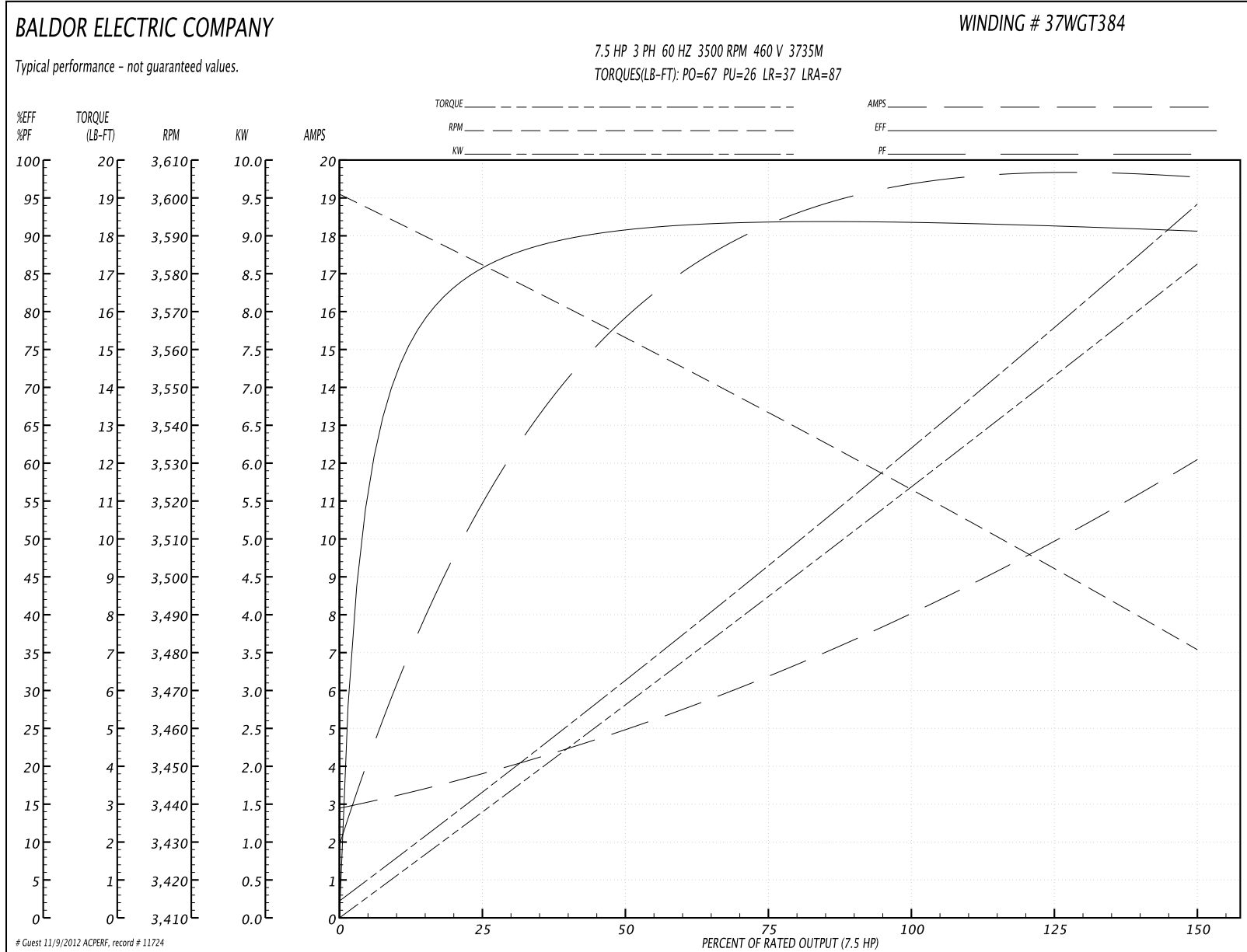
Parts List		
Part Number	Description	Quantity
SA147562	SA 37J639T384G1	1.000 EA
RA136603	RA 37J639T384G1	1.000 EA
36FN3000C02	EXFN, PLASTIC, 5.25 OD, 1.175 ID	1.000 EA
HW3200S01	EYEBOLT 3/8-16 X3/4 S.S. TDR #35988	1.000 EA
37CB1004A01	CONDUIT BOX, MACH	1.000 EA
37GS3011	1/8"WHITE NEOPRENE BOX GS	1.000 EA
51XW2520A12	.25-20 X .75, TAPTITE II, HEX WSHR SLTD	2.000 EA
11XW1032G06	10-32 X .38, TAPTITE II, HEX WSHR SLTD U	1.000 EA
HW3001B01	003SS CUP WASHER, FOR #8 SCREW	1.000 EA
37FE1907A01	FR ENDPLATE ASSY	1.000 EA
HW4606A03	JM CLIPPER/SEAL (LWE-1156-1875-AL44)	1.000 EA
HW5100A06	W2420-025 WVY WSHR (WB)	1.000 EA
37EP1908A02	PU EP FOR LOCKED 307 BRG	1.000 EA
HW4500A33	1/8 NPT STAINLESS,HOLO-KROME #13002,PRES	3.000 EA
HW4606A04	JM CLIPPER/SEAL (LWE-1376-2125-AL45)	1.000 EA
10XN2520S32	1/4-20 X 2 HEX HEAD SS	4.000 EA
XY3118S12	5/16-18 HEX NUT, STAINLESS STEEL	4.000 EA
37FH4000A45	STAINLESS FAN COVER, NO GREASER SLOT (FO	1.000 EA
10XN1032S06	HEX HD CAP SCREW, SS	3.000 EA
36CB4517	36 LIPPED CB LID #304 STAINLESS STEEL	1.000 EA
37GS3010SP	1/16"WHITE LID GASKET	1.000 EA
59XN0832S07	8/32 X 7/16 HX WS HD SER X	4.000 EA
HW2502F21	#303 SS,SQ KEY 5/16 X 2.375	1.000 EA
HA7000A02	KEY RETAINER RING, 1 1/8 DIA, 1 3/8 DIA	1.000 EA

Parts List (continued)		
Part Number	Description	Quantity
MJ5001A02	732 CL SEALANT 3 OZ DIXIE BEARING 289100	0.001 EA
MJ1000A75	GREASE, POLYREX EM EXXON	0.050 LB
51XB1214A20	12-14X1.25 HXWSSLD SERTYB	1.000 EA
HA3104S32	THRUBOLT 5/16-18X12.75 SS	4.000 EA
LB1125C02	SUPER-E (STOCK CTN LABEL SUPER-E WITH FL	1.000 EA
37PA1052	PACKAGING GROUP, 150 LB MTR 2 X 4 RUNNER	1.000 EA
LB1357	ENERGY GUIDE LABEL (BOX LABEL)	1.000 SH

Performance Data at 460V, 60Hz, 7.5HP (Typical performance - Not guaranteed values)

General Characteristics							
Full Load Torque:	11.5 LB-FT			Start Configuration:	DOL		
No-Load Current:	3.2 Amps			Break-Down Torque:	67.0 LB-FT		
Line-line Res. @ 25°C.:	0.918 Ohms A Ph / 0.0 Ohms B Ph			Pull-Up Torque:	26.0 LB-FT		
Temp. Rise @ Rated Load:	47 C			Locked-Rotor Torque:	37.0 LB-FT		
Temp. Rise @ S.F. Load:	57 C			Starting Current:	87.0 Amps		
Load Characteristics							
% of Rated Load	25	50	75	100	125	150	S.F.
Power Factor:	50.0	79.0	90.0	93.0	95.0	96.0	0.0
Efficiency:	84.4	90.9	92.1	91.9	91.2	90.6	0.0
Speed:	3584.0	3564.0	3542.0	3521.0	3499.0	3483.0	0.0
Line Amperes:	3.5	4.7	6.6	8.3	10.3	11.8	9.5

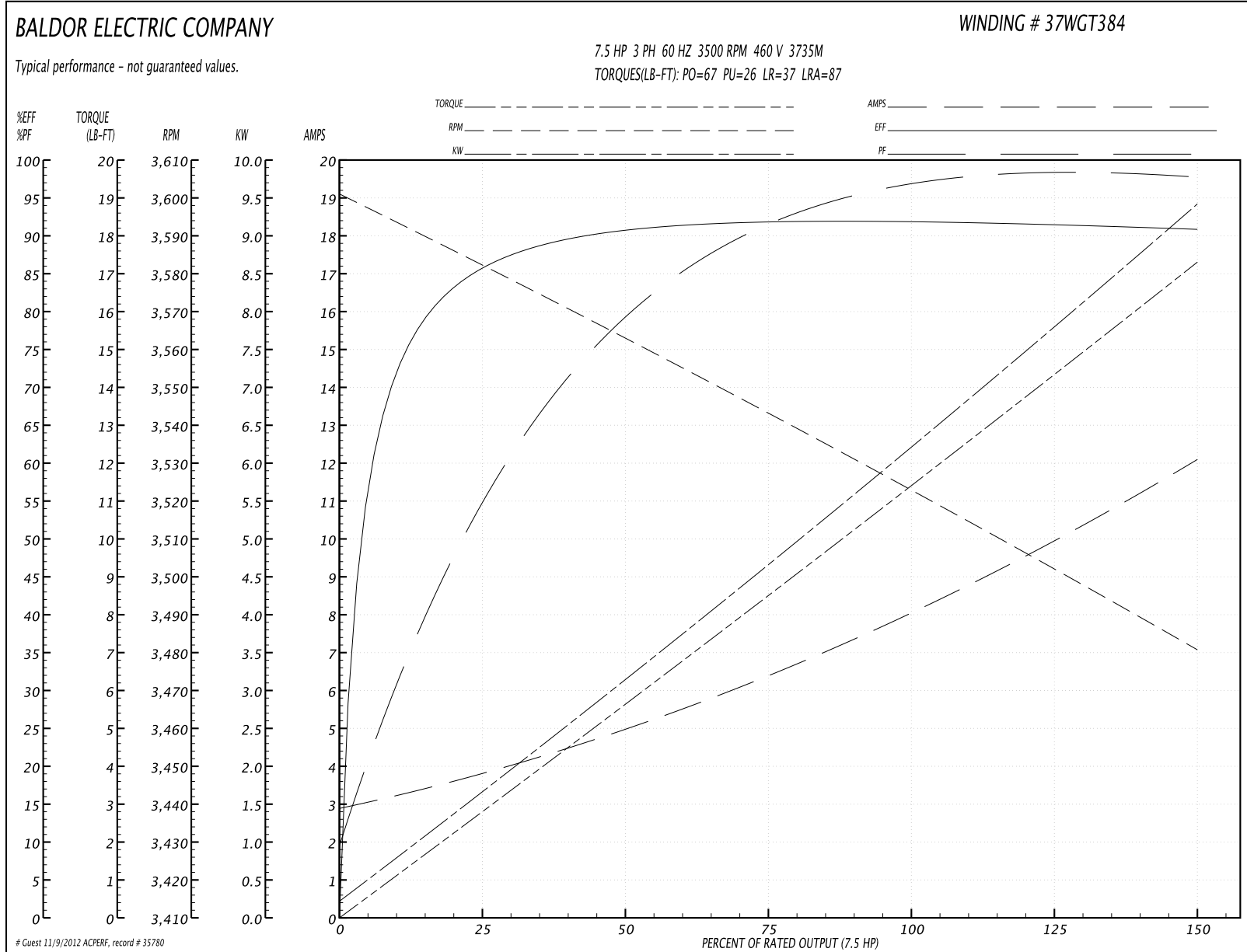
Performance Graph at 460V, 60Hz, 7.5HP Typical performance - Not guaranteed values



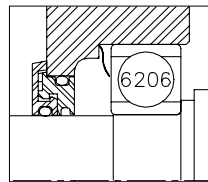
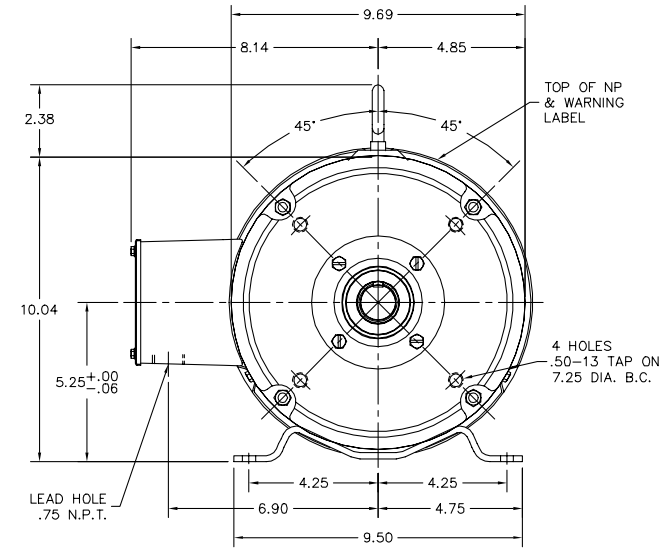
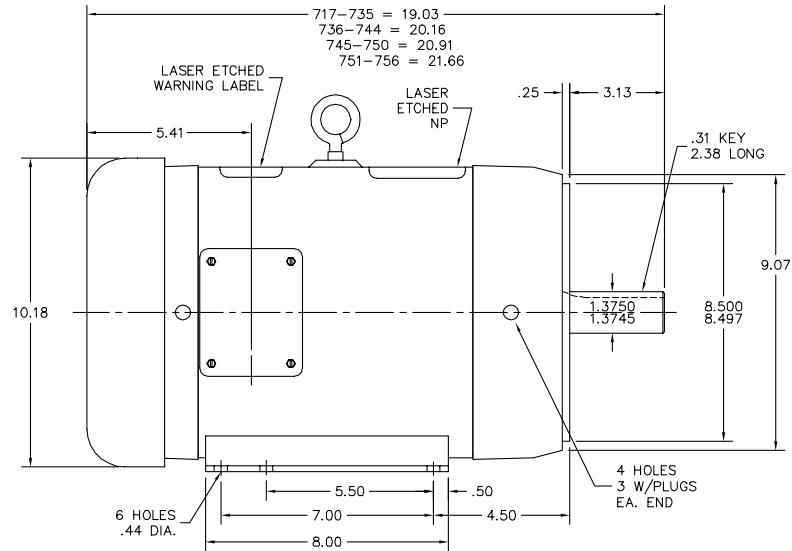
Performance Data at 460V, 60Hz, 7.5HP (Typical performance - Not guaranteed values)

General Characteristics							
Full Load Torque:	11.5 LB-FT			Start Configuration:	DOL		
No-Load Current:	3.2 Amps			Break-Down Torque:	67.0 LB-FT		
Line-line Res. @ 25°C.:	0.91 Ohms A Ph / 0.0 Ohms B Ph			Pull-Up Torque:	26.0 LB-FT		
Temp. Rise @ Rated Load:	47 C			Locked-Rotor Torque:	37.0 LB-FT		
Temp. Rise @ S.F. Load:	57 C			Starting Current:	87.0 Amps		
Load Characteristics							
% of Rated Load	25	50	75	100	125	150	S.F.
Power Factor:	62.0	86.0	90.0	95.0	95.0	100.0	95.0
Efficiency:	84.6	90.9	92.2	91.9	91.4	90.9	91.6
Speed:	3584.0	3564.0	3542.0	3521.0	3499.0	3483.0	3508.0
Line Amperes:	3.5	4.7	6.6	8.3	10.3	11.8	9.5

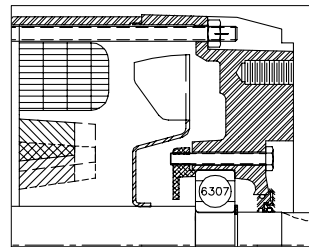
Performance Graph at 460V, 60Hz, 7.5HP Typical performance - Not guaranteed values



37LYJ639



FRONT END DETAIL



PULLEY END DETAIL

CUSTOMER IS RESPONSIBLE FOR DETERMINING THAT MOTOR PERFORMANCE IS SUITABLE IN THE APPLICATION.

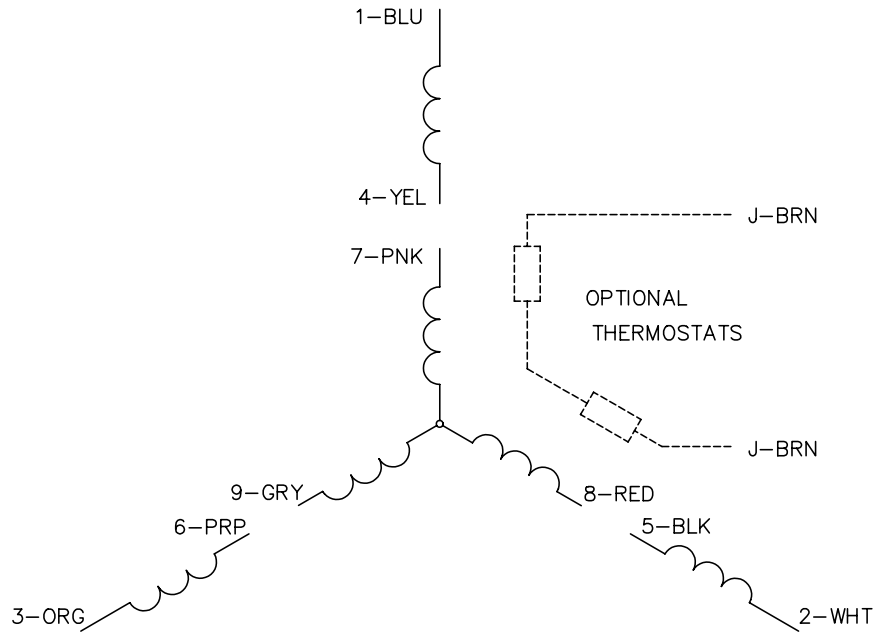
REV. DESC: NEW	VERSION: 00	TDR: 000000402493
REV. LTR: -	REVISED: 12:58:39 07/19/2006	BY: ENBRYPO
FILE: \AAA\00138\592		
MTL: -		

BALDOR ELECTRIC Co.

STD HOR 213-5TC TEFC 37M WD4 W/LASER ETCHED BAND

37LYJ639

CD0005

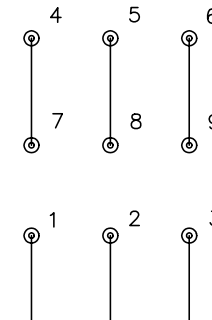


LOW VOLTAGE
(2Y)



LINE

HIGH VOLTAGE
(1Y)



LINE

NOTES:

1. INTERCHANGE ANY TWO LINE LEADS TO REVERSE ROTATION.
2. OPTIONAL THERMOSTATS ARE PROVIDED WHEN SPECIFIED.
3. ACTUAL NUMBER OF INTERNAL PARALLEL CIRCUITS MAY BE A MULTIPLE OF THOSE SHOWN ABOVE.
4. LEAD COLORS ARE OPTIONAL. LEADS MUST ALWAYS BE NUMBERED AS SHOWN.

REV. DESC: REVISE TO SHOW OPTIONAL COLORS			
REV. LTR: E	BY: JLP	REVISED: 01/19/99 10:15	TDR: 0171435
90000		FILE: AAA00005140	MDL: -
		MTL: -	

BALDOR ELECTRIC Co.

3PH, DV, 9 LEADS

CD0005