

BALDOR® • *RELIANCE*

Product Information Packet

CESSWDM3711T

10HP,3500RPM,3PH,60HZ,215TC,3744M,TEFC,F

Copyright © All product information within this document is subject to Baldor Electric Company copyright © protection, unless otherwise noted.

Part Detail							
Revision:	H	Status:	PRD/A	Change #:		Proprietary:	No
Type:	AC	Prod. Type:	3744M	Elec. Spec:	37WGT383	CD Diagram:	
Enclosure:	TEFC	Mfg Plant:		Mech. Spec:	37J639	Layout:	
Frame:	215TC	Mounting:	F1	Poles:	02	Created Date:	07-19-2006
Base:	RG	Rotation:	R	Insulation:	F	Eff. Date:	04-03-2012
Leads:	9#14	Literature:		Elec. Diagram:		Replaced By:	

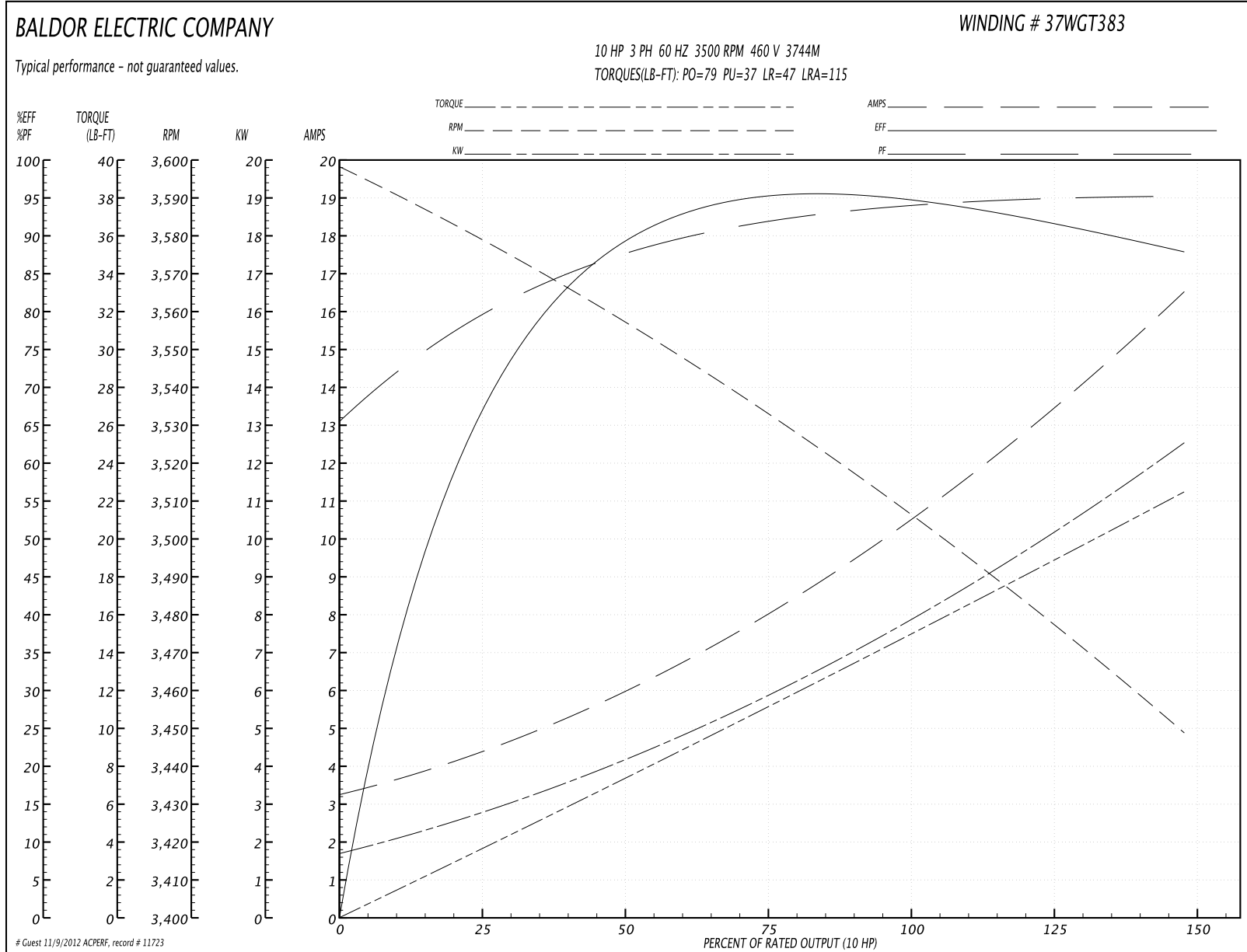
Parts List		
Part Number	Description	Quantity
SA147561	SA 37J639T383G1	1.000 EA
RA136602	RA 37J639T383G1	1.000 EA
HW3200S01	EYEBOLT 3/8-16 X3/4 S.S. TDR #35988	1.000 EA
37CB1004A01	CONDUIT BOX, MACH	1.000 EA
37GS3011	1/8"WHITE NEOPRENE BOX GS	1.000 EA
51XW2520A12	.25-20 X .75, TAPTITE II, HEX WSHR SLTD	2.000 EA
11XW1032G06	10-32 X .38, TAPTITE II, HEX WSHR SLTD U	1.000 EA
HW3001B01	003SS CUP WASHER, FOR #8 SCREW	1.000 EA
37FE1907A01	FR ENDPLATE ASSY	1.000 EA
HW4606A03	JM CLIPPER/SEAL (LWE-1156-1875-AL44)	1.000 EA
HW5100A06	W2420-025 WVY WSHR (WB)	1.000 EA
37EP1908A02	PU EP FOR LOCKED 307 BRG	1.000 EA
HW4500A33	1/8 NPT STAINLESS,HOLO-KROME #13002,PRES	3.000 EA
HW4606A04	JM CLIPPER/SEAL (LWE-1376-2125-AL45)	1.000 EA
10XN2520S32	1/4-20 X 2 HEX HEAD SS	4.000 EA
XY3118S12	5/16-18 HEX NUT, STAINLESS STEEL	4.000 EA
37FH4000A45	STAINLESS FAN COVER, NO GREASER SLOT (FO	1.000 EA
10XN1032S06	HEX HD CAP SCREW, SS	3.000 EA
36CB4517	36 LIPPED CB LID #304 STAINLESS STEEL	1.000 EA
37GS3010SP	1/16"WHITE LID GASKET	1.000 EA
59XN0832S07	8/32 X 7/16 HX WS HD SER X	4.000 EA
HW2502F21	#303 SS,SQ KEY 5/16 X 2.375	1.000 EA
HA7000A02	KEY RETAINER RING, 1 1/8 DIA, 1 3/8 DIA	1.000 EA
MJ5001A02	732 CL SEALANT 3 OZ DIXIE BEARING 289100	0.001 EA

Parts List (continued)		
Part Number	Description	Quantity
MJ1000A75	GREASE, POLYREX EM EXXON	0.050 LB
51XB1214A20	12-14X1.25 HXWSSLD SERTYB	1.000 EA
36FN3000C02	EXFN, PLASTIC, 5.25 OD, 1.175 ID	1.000 EA
HA3104S30	T-BOLT, .31-18 X 13.875SSTD#100207	4.000 EA
LB1125C02	SUPER-E (STOCK CTN LABEL SUPER-E WITH FL	1.000 EA
37PA1052	PACKAGING GROUP, 150 LB MTR 2 X 4 RUNNER	1.000 EA
LB1357	ENERGY GUIDE LABEL (BOX LABEL)	1.000 SH

Performance Data at 460V, 60Hz, 10.0HP (Typical performance - Not guaranteed values)

General Characteristics							
Full Load Torque:	15.0 LB-FT			Start Configuration:	DOL		
No-Load Current:	3.4 Amps			Break-Down Torque:	79.0 LB-FT		
Line-line Res. @ 25°C.:	0.71 Ohms A Ph / 0.0 Ohms B Ph			Pull-Up Torque:	37.0 LB-FT		
Temp. Rise @ Rated Load:	57 C			Locked-Rotor Torque:	47.0 LB-FT		
Temp. Rise @ S.F. Load:	73 C			Starting Current:	115.0 Amps		
Load Characteristics							
% of Rated Load	25	50	75	100	125	150	S.F.
Power Factor:	60.0	83.0	91.0	94.0	95.0	96.0	0.0
Efficiency:	88.1	92.0	92.4	91.8	90.7	89.4	0.0
Speed:	3578.0	3555.0	3533.0	3507.0	3479.0	3448.0	0.0
Line Amperes:	4.2	6.0	8.1	10.6	13.5	16.4	12.3

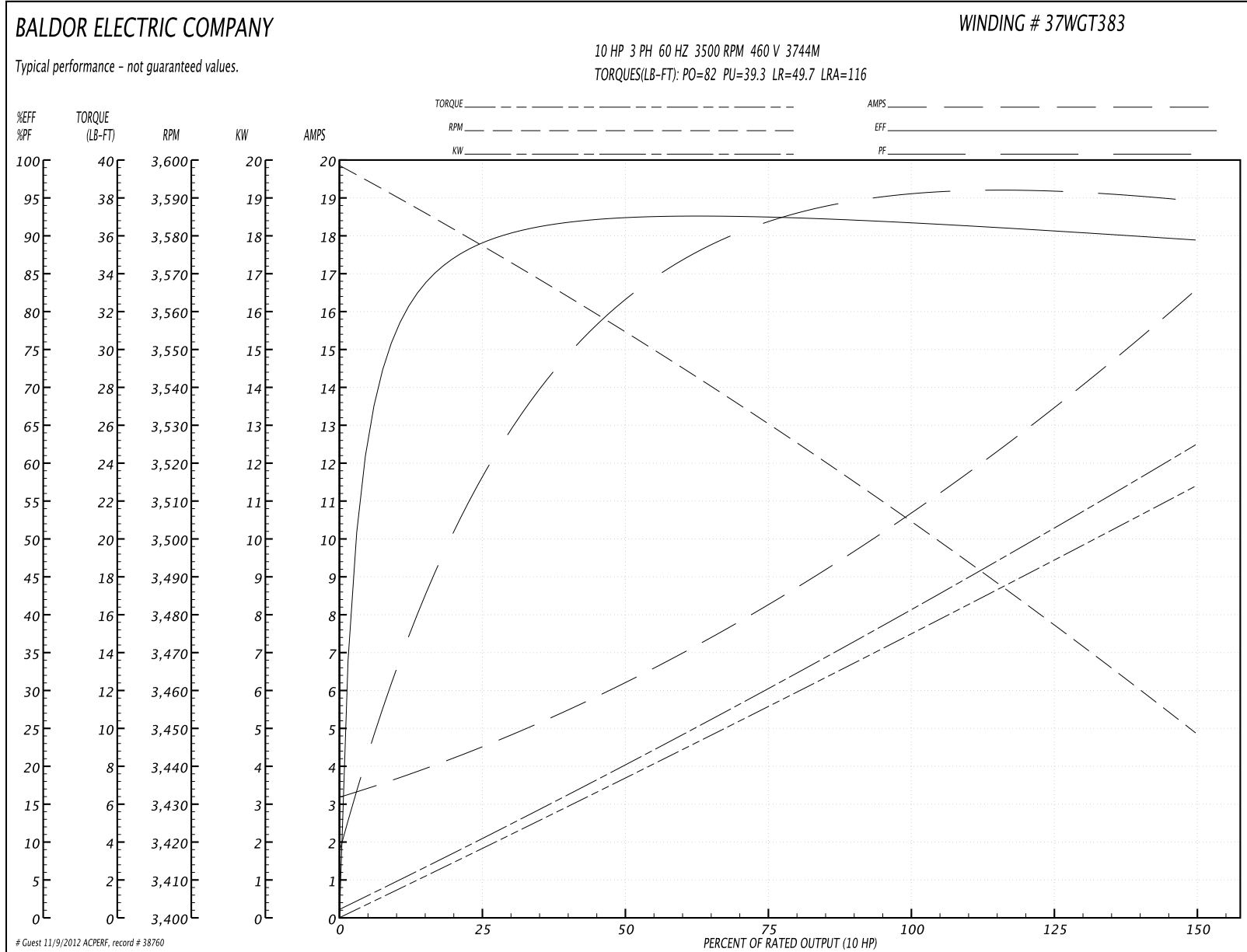
Performance Graph at 460V, 60Hz, 10.0HP Typical performance - Not guaranteed values

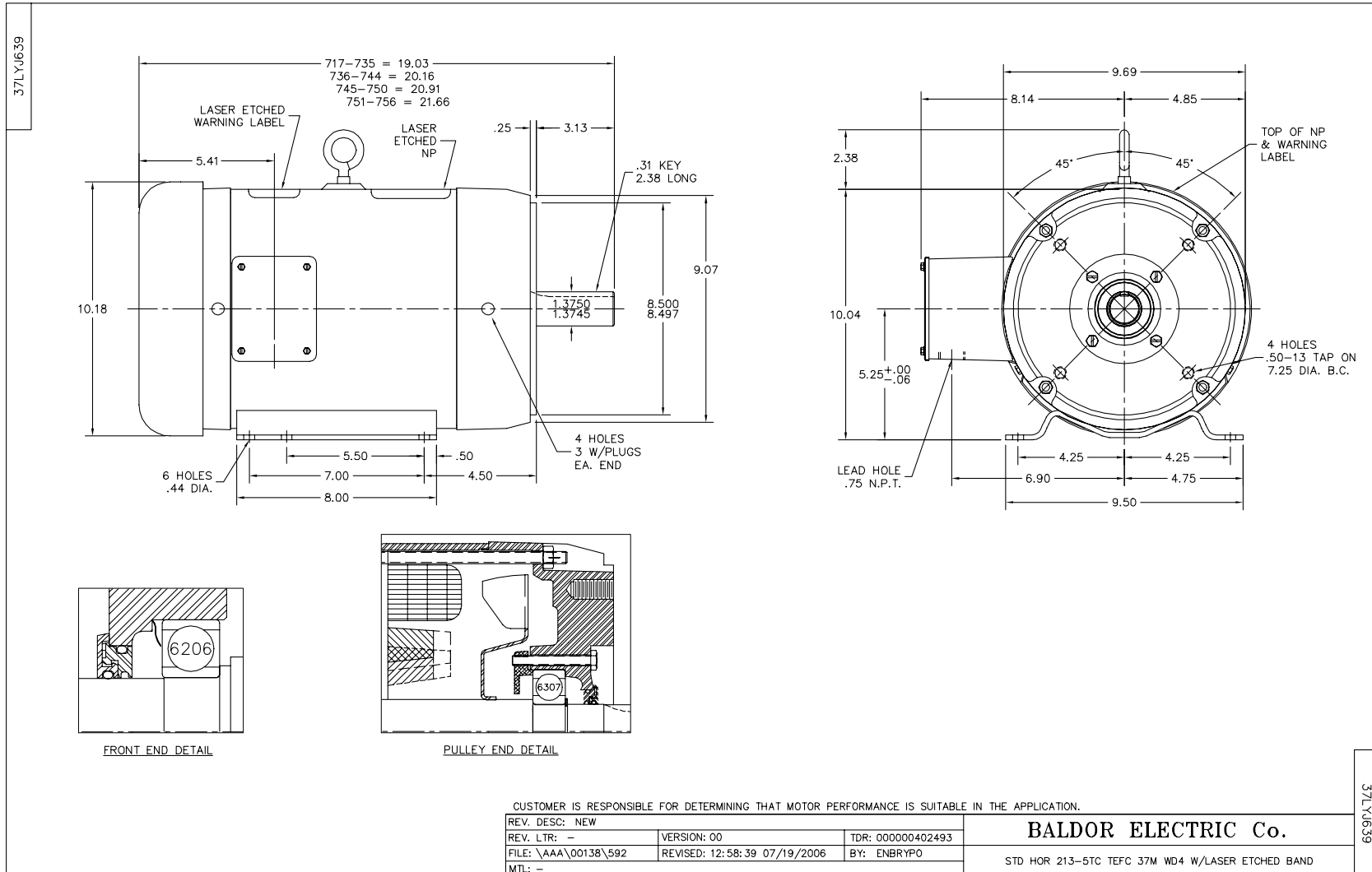


Performance Data at 460V, 60Hz, 10.0HP (Typical performance - Not guaranteed values)

General Characteristics							
Full Load Torque:	14.6 LB-FT			Start Configuration:	DOL		
No-Load Current:	3.41 Amps			Break-Down Torque:	82.0 LB-FT		
Line-line Res. @ 25°C.:	0.70873 Ohms A Ph / 0.0 Ohms B Ph			Pull-Up Torque:	39.3 LB-FT		
Temp. Rise @ Rated Load:	55 C			Locked-Rotor Torque:	49.7 LB-FT		
Temp. Rise @ S.F. Load:	70 C			Starting Current:	116.0 Amps		
Load Characteristics							
% of Rated Load	25	50	75	100	125	150	S.F.
Power Factor:	60.0	83.0	91.0	94.0	95.0	96.0	95.0
Efficiency:	88.1	92.0	92.4	91.8	90.7	89.4	91.1
Speed:	3578.2	3555.4	3532.7	3506.9	3479.2	3448.4	3490.0
Line Amperes:	4.15	5.98	8.12	10.6	13.5	16.4	12.3

Performance Graph at 460V, 60Hz, 10.0HP Typical performance - Not guaranteed values

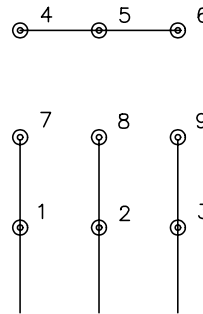




CD0005

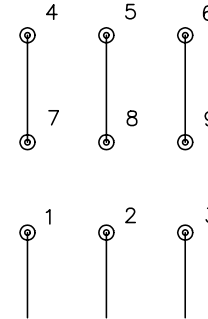


LOW VOLTAGE
(2Y)



LINE

HIGH VOLTAGE
(1Y)



LINE

NOTES:

1. INTERCHANGE ANY TWO LINE LEADS TO REVERSE ROTATION.
2. OPTIONAL THERMOSTATS ARE PROVIDED WHEN SPECIFIED.
3. ACTUAL NUMBER OF INTERNAL PARALLEL CIRCUITS MAY BE A MULTIPLE OF THOSE SHOWN ABOVE.
4. LEAD COLORS ARE OPTIONAL. LEADS MUST ALWAYS BE NUMBERED AS SHOWN.

REV. DESC: REVISE TO SHOW OPTIONAL COLORS			
REV. LTR: E	BY: JLP	REVISED: 01/19/99 10:15	TDR: 0171435
900000		FILE: AAA00005140	MDL: -
		MTL: -	

BALDOR ELECTRIC Co.

3PH, DV, 9 LEADS

CD0005