

BALDOR® • *RELIANCE*

Product Information Packet

CEWDM23994T

15HP,3500RPM,3PH,60HZ,254TC,3752M,TEFC,F

Copyright © All product information within this document is subject to Baldor Electric Company copyright © protection, unless otherwise noted.

Part Detail							
Revision:	P	Status:	PRD/A	Change #:		Proprietary:	No
Type:	AC	Prod. Type:	3752M	Elec. Spec:	37WGT381	CD Diagram:	
Enclosure:	TEFC	Mfg Plant:		Mech. Spec:	37H882	Layout:	
Frame:	254TC	Mounting:	F1	Poles:	02	Created Date:	
Base:	RG	Rotation:	R	Insulation:	F	Eff. Date:	06-08-2012
Leads:	9#12	Literature:		Elec. Diagram:		Replaced By:	

Nameplate NP1669L									
CAT.NO.	CEWDM23994T								
SPEC.	37H882T381G1								
HP	15								
VOLTS	230/460								
AMP	33.2/16.6								
RPM	3500								
FRAME	254TC	HZ	60	PH	3				
SER.F.	1.15	CODE	K	DES	A	CLASS	F		
NEMA-NOM-EFF	91	PF	90						
RATING	40C AMB-CONT								
CC	010A	USABLE AT 208V	36.4						
DE	6309	ODE	6206						
ENCL	TEFC	SN							
BLANK									

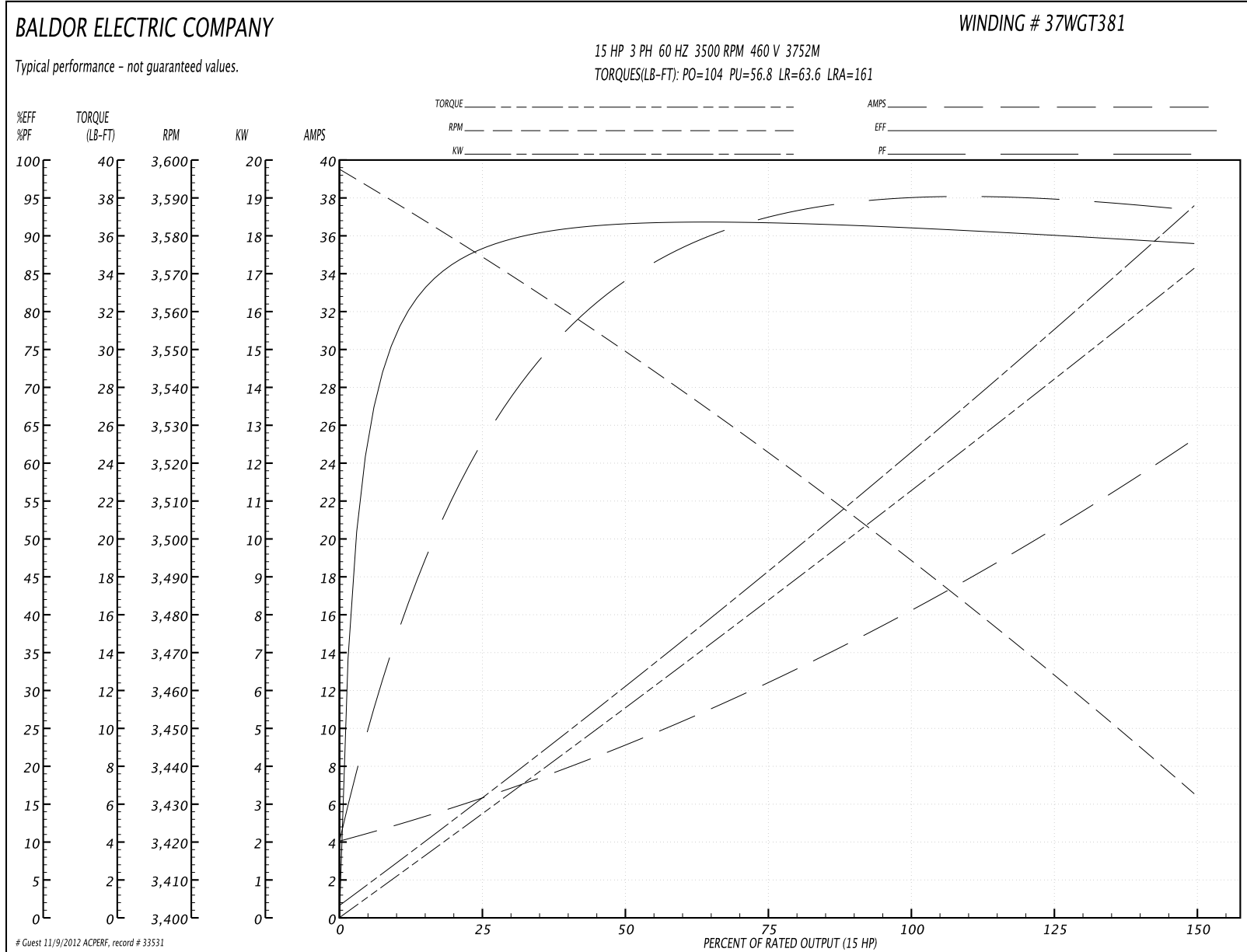
Parts List		
Part Number	Description	Quantity
SA084747	SA 37H882T381G1	1.000 EA
RA077907	RA 37H882T381G1	1.000 EA
37FN3002C01	EXFN, PLASTIC, 6.00 OD, 1.155 ID	1.000 EA
S/P107-000-001	SUPER E PROC'S-FS & WS PLTS-POLYREX EM G	1.000 EA
HW3200A01	3/8-16X3/4 I-BLT WELDED F/S	1.000 EA
37CB3005A04W	CASTING W/.75 NPT@6(MACH WHITE)	1.000 EA
37GS1015	GASKET, FOR 37 WD KOBX'S (SANTOPRENE)	1.000 EA
10XN2520A10	1/4-20X 5/8 HEX HD X	2.000 EA
HW1001A25	LOCKWASHER 1/4, ZINC PLT .493 OD, .255 I	2.000 EA
11XW1032G06	10-32 X .38, TAPTITE II, HEX WSHR SLTD U	1.000 EA
37EP3101A59MW	WHITE EPOXY EP MACH COMPL	1.000 EA
HW4032A01	BLACK DRAIN PLUG FOR WASH DOWN MOTORS	3.000 EA
HW5100A06	W2420-025 WVY WSHR (WB)	1.000 EA
37EP3401T08MW	FACE MT EP, ENCL, 213TC-215TC, W/WHITE E	1.000 EA
HW4032A01	BLACK DRAIN PLUG FOR WASH DOWN MOTORS	3.000 EA
HW4600B53	SEAL 1.688 X 2.275 X 0.312 SINGLE LIP DB	1.000 EA
10XN2520S36	1/4-20X 2 1/4 HEX HD SS	4.000 EA
HA3104S25	THRUBOLT-5/16-18X14.75 SS	4.000 EA
XY3118S12	5/16-18 HEX NUT, STAINLESS STEEL	4.000 EA
51XB1214A16	12-14X1.00 HXWSSLD SERTYB	1.000 EA
07FH4011	WASHDOWN IEC FH W/AUTOPHORETIC PRIMER	1.000 EA
11XW1032S06	10-32 X .38, TAPTITE II, HEX WSHR SLTD U	3.000 EA
37CB4512	CONDUIT BOX LID FOR WASHDOWN 37 FRAME	1.000 EA
37GS1008A02	37 GS FOR CB LID - WHITE NEOPRENE	1.000 EA

Parts List (continued)		
Part Number	Description	Quantity
59XN0832S07	8/32 X 7/16 HX WS HD SER X	4.000 EA
HW4600B36SP	V-RING SLINGER 1.188 X 1.690 X 0.240	1.000 EA
HW4600B44SP	V-RING SLINGER 1.500 X 2.290 X 0.280	1.000 EA
HW2502G25	#303 SS,SQ KEY 3/8 X 2.880	1.000 EA
LB1115	LABEL,LIFTING DEVICE	1.000 EA
LB1164	LABEL,WARNING AND DRAIN	1.000 EA
MJ1000A75	GREASE, POLYREX EM EXXON	0.050 LB
MJ5001A01	46-665 RED SEALER	0.001 QT
85XU0407S04	4X1/4 U DRIVE PIN STAINLESS	2.000 EA
MG1025W11	PAINT- 781-101 WILKOFASST WHITE EPOXY	0.028 GA
MG1025Z20	ACTIVATOR WILKOFASST 060.32	0.010 GA
LB1125C02	SUPER-E (STOCK CTN LABEL SUPER-E WITH FL	1.000 EA
LC0005	CONN.DIA.,TY M,9-LD,DUAL VOLT,REVERSING	1.000 EA
LB1357	ENERGY GUIDE LABEL (BOX LABEL)	1.000 SH
NP1669L	SS WD SUPER-E UL CSA-EEV PREM REV MTG	1.000 EA
37PA1052	PACKAGING GROUP, 150 LB MTR 2 X 4 RUNNER	1.000 EA

Performance Data at 460V, 60Hz, 15.0HP (Typical performance - Not guaranteed values)

General Characteristics							
Full Load Torque:	22.5 LB-FT			Start Configuration:	DOL		
No-Load Current:	4.43 Amps			Break-Down Torque:	104.0 LB-FT		
Line-line Res. @ 25°C.:	0.51091 Ohms A Ph / 0.0 Ohms B Ph			Pull-Up Torque:	56.8 LB-FT		
Temp. Rise @ Rated Load:	70 C			Locked-Rotor Torque:	63.6 LB-FT		
Temp. Rise @ S.F. Load:	87 C			Starting Current:	161.0 Amps		
Load Characteristics							
% of Rated Load	25	50	75	100	125	150	S.F.
Power Factor:	69.0	87.0	92.0	93.0	94.0	94.0	94.0
Efficiency:	88.8	92.0	92.1	91.5	90.4	89.0	90.8
Speed:	3573.5	3549.1	3521.8	3495.3	3464.8	3432.8	3477.0
Line Amperes:	5.91	8.94	12.6	16.5	20.6	25.0	19.0

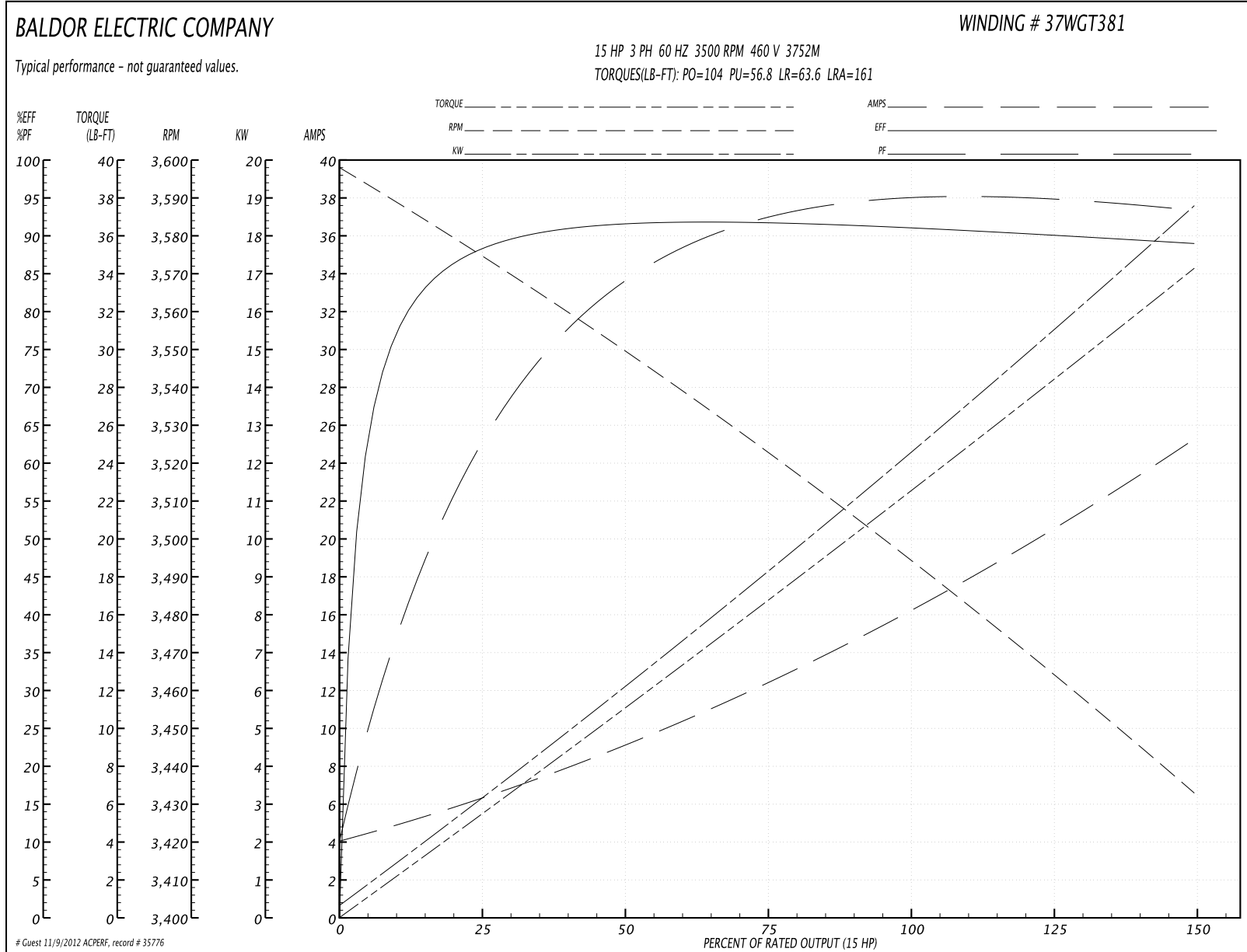
Performance Graph at 460V, 60Hz, 15.0HP Typical performance - Not guaranteed values

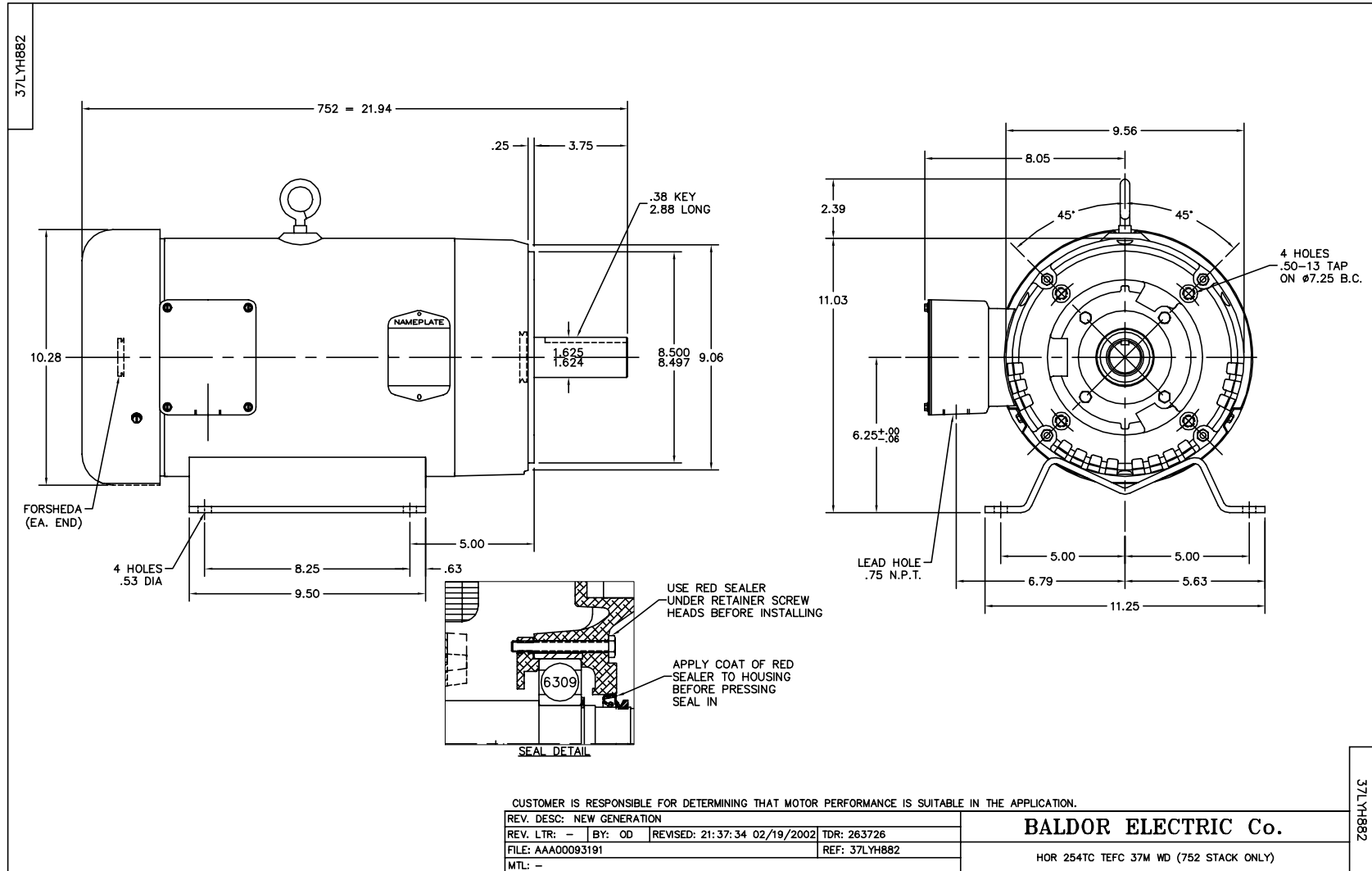


Performance Data at 460V, 60Hz, 15.0HP (Typical performance - Not guaranteed values)

General Characteristics							
Full Load Torque:	22.5 LB-FT			Start Configuration:	DOL		
No-Load Current:	4.43 Amps			Break-Down Torque:	104.0 LB-FT		
Line-line Res. @ 25°C.:	0.479 Ohms A Ph / 0.0 Ohms B Ph			Pull-Up Torque:	56.8 LB-FT		
Temp. Rise @ Rated Load:	70 C			Locked-Rotor Torque:	63.6 LB-FT		
Temp. Rise @ S.F. Load:	87 C			Starting Current:	161.0 Amps		
Load Characteristics							
% of Rated Load	25	50	75	100	125	150	S.F.
Power Factor:	69.0	87.0	92.0	93.0	94.0	94.0	94.0
Efficiency:	88.3	91.5	91.8	91.2	90.1	89.0	90.5
Speed:	3574.0	3549.0	3522.0	3495.0	3465.0	3433.0	3477.0
Line Amperes:	5.91	8.94	12.6	16.5	20.6	25.0	19.0

Performance Graph at 460V, 60Hz, 15.0HP Typical performance - Not guaranteed values

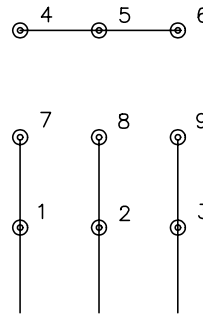




CD0005

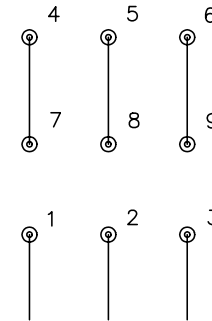


LOW VOLTAGE
(2Y)



LINE

HIGH VOLTAGE
(1Y)



LINE

NOTES:

1. INTERCHANGE ANY TWO LINE LEADS TO REVERSE ROTATION.
2. OPTIONAL THERMOSTATS ARE PROVIDED WHEN SPECIFIED.
3. ACTUAL NUMBER OF INTERNAL PARALLEL CIRCUITS MAY BE A MULTIPLE OF THOSE SHOWN ABOVE.
4. LEAD COLORS ARE OPTIONAL. LEADS MUST ALWAYS BE NUMBERED AS SHOWN.

REV. DESC: REVISE TO SHOW OPTIONAL COLORS			
REV. LTR: E	BY: JLP	REVISED: 01/19/99 10:15	TDR: 0171435
90000		FILE: AAA00005140	MDL: -
		MTL: -	

BALDOR ELECTRIC Co.

3PH, DV, 9 LEADS

CD0005