

BALDOR® • *RELIANCE*

Product Information Packet

CEWDM3558T

2HP, 1755RPM, 3PH, 60HZ, 145TC, 3530M, TEFC, F1

Copyright © All product information within this document is subject to Baldor Electric Company copyright © protection, unless otherwise noted.

| Part Detail | | | | | | | |
|-------------|-------|-------------|-------|----------------|----------|---------------|------------|
| Revision: | E | Status: | PRD/A | Change #: | | Proprietary: | No |
| Type: | AC | Prod. Type: | 3530M | Elec. Spec: | 35WGM494 | CD Diagram: | |
| Enclosure: | TEFC | Mfg Plant: | | Mech. Spec: | 35SS595 | Layout: | |
| Frame: | 145TC | Mounting: | F1 | Poles: | 04 | Created Date: | 11-19-2010 |
| Base: | RG | Rotation: | R | Insulation: | F | Eff. Date: | 10-05-2012 |
| Leads: | 9#18 | Literature: | | Elec. Diagram: | | Replaced By: | |

| Nameplate NP1669L | | | | | | | | | |
|-------------------|---------------|----------------|------|-----|---|-------|---|--|--|
| CAT.NO. | CEWDM3558T | | | | | | | | |
| SPEC. | 35SS595M494G1 | | | | | | | | |
| HP | 2 | | | | | | | | |
| VOLTS | 208-230/460 | | | | | | | | |
| AMP | 6-5.8/2.9 | | | | | | | | |
| RPM | 1755 | | | | | | | | |
| FRAME | 145TC | HZ | 60 | PH | 3 | | | | |
| SER.F. | 1.15 | CODE | L | DES | B | CLASS | F | | |
| NEMA-NOM-EFF | 86.5 | PF | 73 | | | | | | |
| RATING | 40C AMB-CONT | | | | | | | | |
| CC | 010A | USABLE AT 208V | | | | | | | |
| DE | 6205 | ODE | 6203 | | | | | | |
| ENCL | TEFC | SN | | | | | | | |
| BLANK | | | | | | | | | |

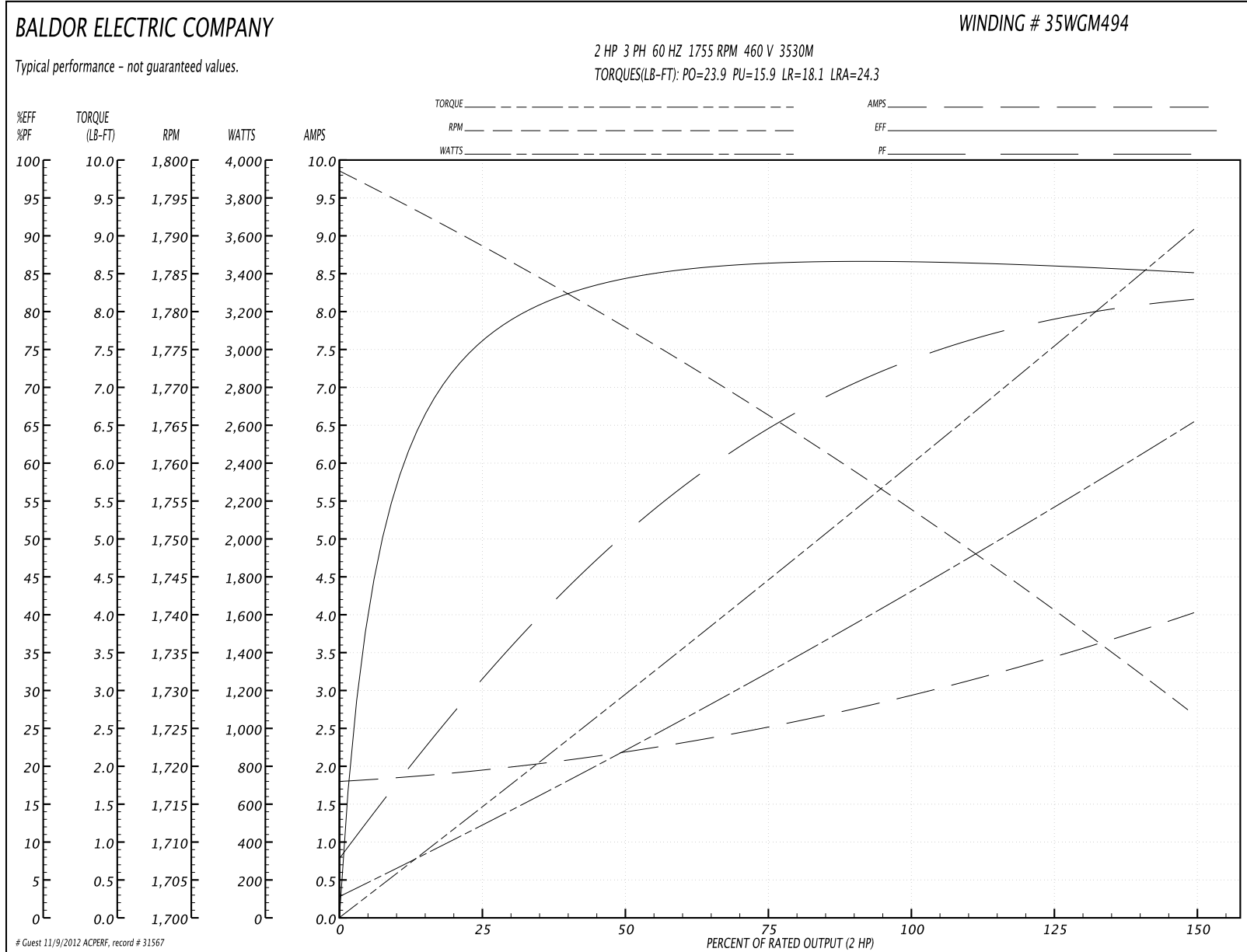
| Parts List | | |
|----------------|---|----------|
| Part Number | Description | Quantity |
| SA211939 | SA 35SS595M494G1 | 1.000 EA |
| RA199168 | RA 35SS595M494G1 | 1.000 EA |
| 34FN3002B01 | EXTERNAL FAN, PLASTIC, .637/.639 HUB W/ | 1.000 EA |
| S/P107-000-001 | SUPER E PROC'S-FS & WS PLTS-POLYREX EM G | 1.000 EA |
| NS2512A01 | INSULATOR, CONDUIT BOX X | 1.000 EA |
| 35CB3010A01W | 35 CB .75 NPT @ 6:00, WHITE EPOXY | 1.000 EA |
| 35GS1039 | 05 MOLDED GASKET W/LIP, 1.12 LEAD HOLE, | 1.000 EA |
| 51XB1016A07 | 10-16 X 7/16 HXWSSLD SERTYB | 2.000 EA |
| 11XW1032G06 | 10-32 X .38, TAPTITE II, HEX WSHR SLTD U | 1.000 EA |
| 35EP3100M04MW | FREP TEFC,"O" DRILLS,NO GRSSR, MACH.WHITE | 1.000 EA |
| HW4032A01 | BLACK DRAIN PLUG FOR WASH DOWN MOTORS | 3.000 EA |
| HW5100A03SP | WAVY WASHER (W1543-017) | 1.000 EA |
| 35EP3300A48MW | SPL FACE MTD EP - 205 BRG - W/SEAL FOR W | 1.000 EA |
| HW4032A01 | BLACK DRAIN PLUG FOR WASH DOWN MOTORS | 3.000 EA |
| HW4600B49SP | SEAL 0.938 X 1.624 X 0.250 SINGLE LIP DB | 1.000 EA |
| 12XN1032S20 | 10-32 X 1-1/4 HEX M.S. , STAINLESS STEEL | 2.000 EA |
| 51XB1214A16 | 12-14X1.00 HXWSSLD SERTYB | 1.000 EA |
| 35FH4005A32SP | IEC FH NO GRSSR W/3 HOLES - W/AUTOPHERETI | 1.000 EA |
| 11XW1032S06 | 10-32 X .38, TAPTITE II, HEX WSHR SLTD U | 3.000 EA |
| 35CB4522 | 35 LIPPED CB LID AUTOPHORETIC | 1.000 EA |
| 35GS1030A02 | 35 GS FOR CB LID - WHITE NEOPRENE | 1.000 EA |
| 59XW0832S07 | TAPTITE II,HEX WSHR UNSLTD SER,410 S.S., | 4.000 EA |
| HW1003S08 | WASHER, #8 EX TH LK, SS | 4.000 EA |
| HA1005A05SP | SLINGER, OD 1.50, ID .659, 203 BRG | 1.000 EA |

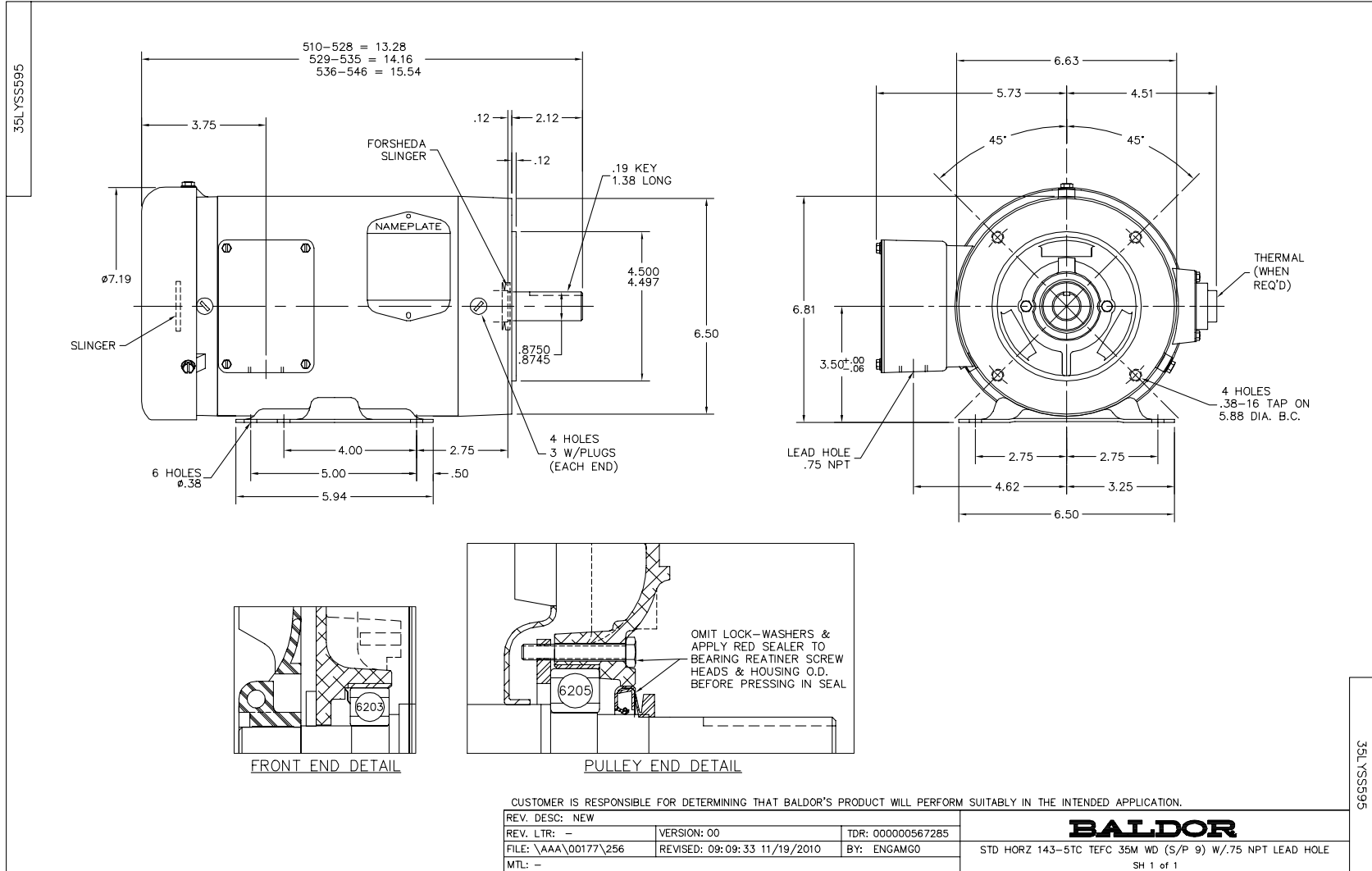
| Parts List (continued) | | |
|------------------------|--|----------|
| Part Number | Description | Quantity |
| HW4600B46SP | SEAL 0.875 X 1.420 X 0.240 FACE SEALING | 1.000 EA |
| HW2502D13 | SS KEY, 3/16 SQ X 1.375 | 1.000 EA |
| HA7000A01 | KEY RETAINER 7/8" DIA SHAFT | 1.000 EA |
| MJ5001A01 | 46-665 RED SEALER | 0.001 QT |
| LB1164 | LABEL,WARNING AND DRAIN | 1.000 EA |
| 85XU0407S04 | 4X1/4 U DRIVE PIN STAINLESS | 2.000 EA |
| HA5027A01 | HA4066A01 T-DRAIN X2 BAGGED | 1.000 EA |
| MJ1000A75 | GREASE, POLYREX EM EXXON | 0.050 LB |
| MG1025Z20 | ACTIVATOR WILKOFAS 060.32 | 0.010 GA |
| MG1025W11 | PAINT- 781-101 WILKOFAS WHITE EPOXY | 0.017 GA |
| HA3100S15 | THRUBOLT - 10-32 X 9.375 | 4.000 EA |
| LB1125C02 | SUPER-E (STOCK CTN LABEL SUPER-E WITH FL | 1.000 EA |
| LC0005 | CONN.DIA.,TY M,9-LD,DUAL VOLT,REVERSING | 1.000 EA |
| NP1669L | SS WD SUPER-E UL CSA-EEV PREM REV MTG | 1.000 EA |
| PA1000 | PACKING GROUP 3500 SHORT | 1.000 EA |
| LB1357 | ENERGY GUIDE LABEL (BOX LABEL) | 1.000 SH |

Performance Data at 460V, 60Hz, 2.0HP (Typical performance - Not guaranteed values)

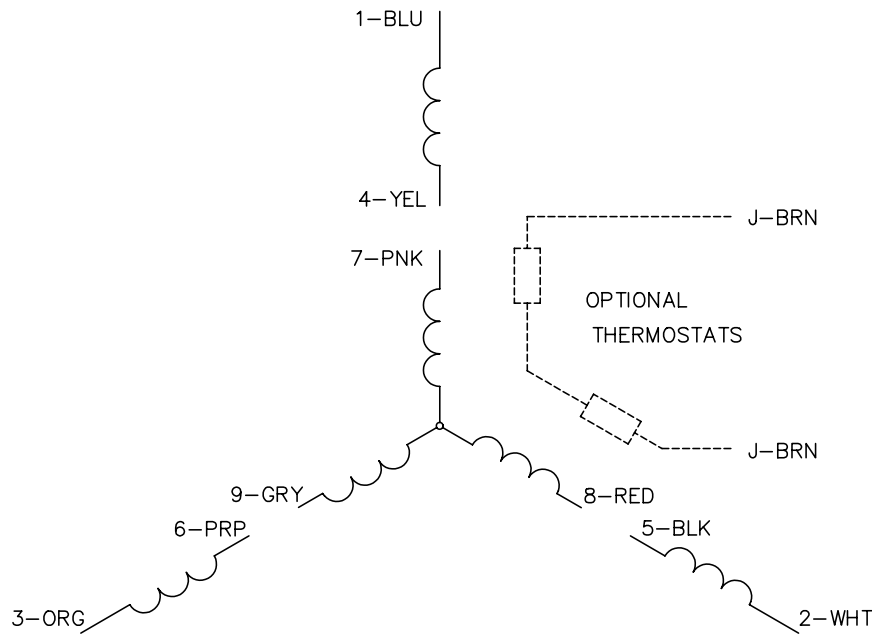
| General Characteristics | | | | | | | |
|--------------------------|--------------------------------|--------|--------|----------------------|------------|--------|--------|
| Full Load Torque: | 5.95 LB-FT | | | Start Configuration: | DOL | | |
| No-Load Current: | 1.82 Amps | | | Break-Down Torque: | 23.9 LB-FT | | |
| Line-line Res. @ 25°C.: | 7.46 Ohms A Ph / 0.0 Ohms B Ph | | | Pull-Up Torque: | 15.9 LB-FT | | |
| Temp. Rise @ Rated Load: | 61 C | | | Locked-Rotor Torque: | 18.1 LB-FT | | |
| Temp. Rise @ S.F. Load: | 74 C | | | Starting Current: | 24.3 Amps | | |
| Load Characteristics | | | | | | | |
| % of Rated Load | 25 | 50 | 75 | 100 | 125 | 150 | S.F. |
| Power Factor: | 32.0 | 51.0 | 64.0 | 73.0 | 79.0 | 82.0 | 77.0 |
| Efficiency: | 75.7 | 84.2 | 86.4 | 87.3 | 86.2 | 85.1 | 86.4 |
| Speed: | 1788.5 | 1778.0 | 1766.7 | 1754.5 | 1740.8 | 1726.6 | 1746.0 |
| Line Amperes: | 1.92 | 2.17 | 2.51 | 2.94 | 3.46 | 4.01 | 3.25 |

Performance Graph at 460V, 60Hz, 2.0HP Typical performance - Not guaranteed values





CD0005

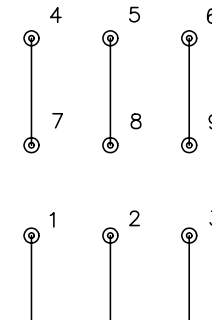


LOW VOLTAGE
(2Y)



LINE

HIGH VOLTAGE
(1Y)



LINE

NOTES:

1. INTERCHANGE ANY TWO LINE LEADS TO REVERSE ROTATION.
2. OPTIONAL THERMOSTATS ARE PROVIDED WHEN SPECIFIED.
3. ACTUAL NUMBER OF INTERNAL PARALLEL CIRCUITS MAY BE A MULTIPLE OF THOSE SHOWN ABOVE.
4. LEAD COLORS ARE OPTIONAL. LEADS MUST ALWAYS BE NUMBERED AS SHOWN.

| | | | |
|---|---------|-------------------------|--------------|
| REV. DESC: REVISE TO SHOW OPTIONAL COLORS | | | |
| REV. LTR: E | BY: JLP | REVISED: 01/19/99 10:15 | TDR: 0171435 |
| 90000 | | FILE: AAA00005140 | MDL: - |
| | | MTL: - | |

BALDOR ELECTRIC Co.

3PH, DV, 9 LEADS

CD0005