

BALDOR® • *RELIANCE*

Product Information Packet

CEWDM3614T

2HP, 1175RPM, 3PH, 60HZ, 184TC, 3644M, TEFC, F1

Copyright © All product information within this document is subject to Baldor Electric Company copyright © protection, unless otherwise noted.

Part Detail							
Revision:	-	Status:	PRD/A	Change #:		Proprietary:	No
Type:	AC	Prod. Type:	3644M	Elec. Spec:	36WGS917	CD Diagram:	
Enclosure:	TEFC	Mfg Plant:		Mech. Spec:	36F317	Layout:	
Frame:	184TC	Mounting:	F1	Poles:	06	Created Date:	06-04-2012
Base:	RG	Rotation:	R	Insulation:	F	Eff. Date:	06-20-2012
Leads:	9#16	Literature:		Elec. Diagram:		Replaced By:	

Nameplate NP1669L

CAT.NO.	CEWDM3614T						
SPEC.	36F317S917G1						
HP	2						
VOLTS	208-230/460						
AMP	7/3.5						
RPM	1175						
FRAME	184TC	HZ	60	PH	3		
SER.F.	1.15	CODE	M	DES	A	CLASS	F
NEMA-NOM-EFF	88.5	PF	60				
RATING	40C AMB-CONT						
CC	010A	USABLE AT 208V					
DE	6206	ODE	6205				
ENCL	TEFC	SN					
BLANK							

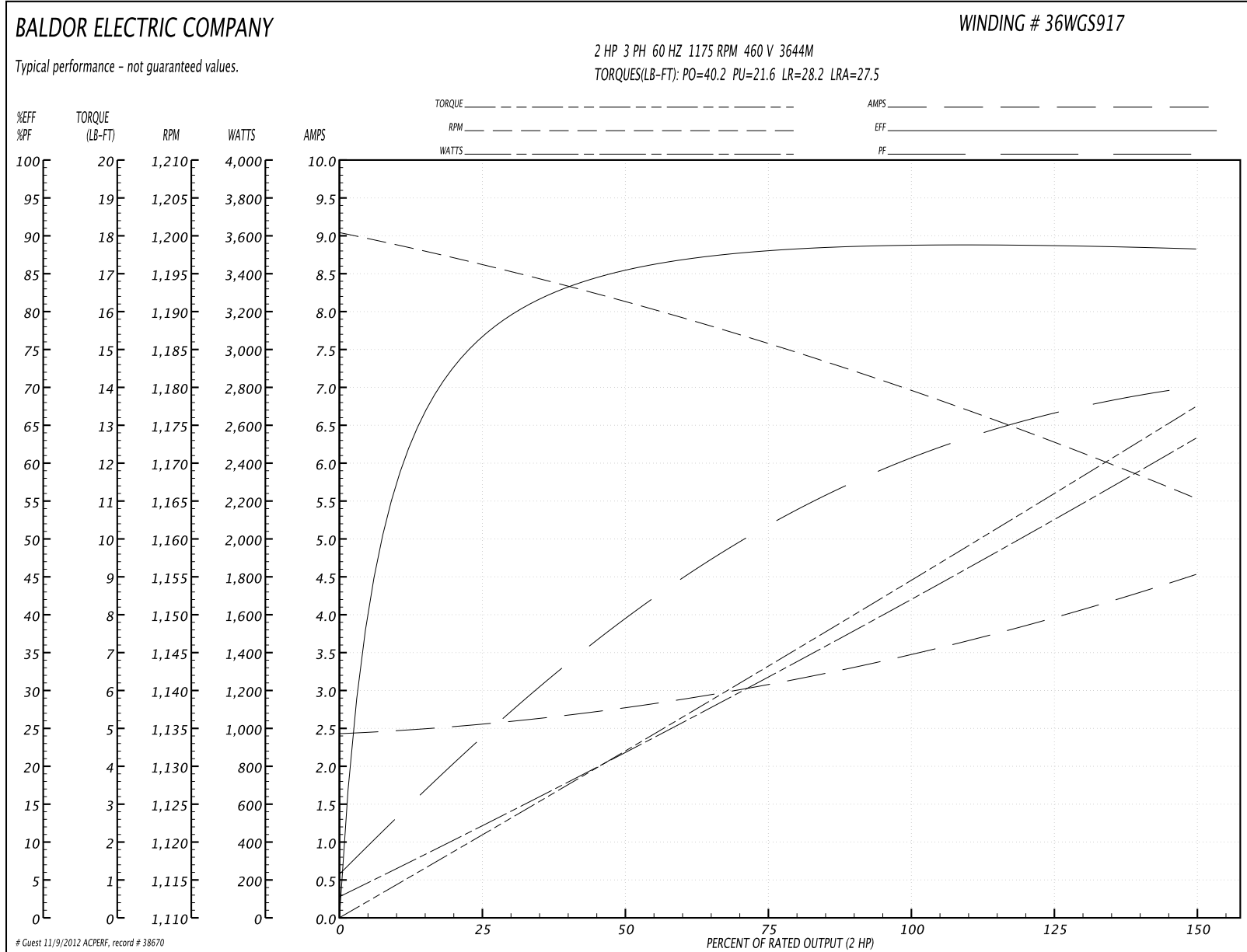
Parts List		
Part Number	Description	Quantity
SA246182	SA 36F317S917G1	1.000 EA
RA233067	RA 36F317S917G1	1.000 EA
36FN3000B01	EXFN, PLASTIC, 6.00 OD, .912 ID	1.000 EA
S/P107-000-001	SUPER E PROC'S-FS & WS PLTS-POLYREX EM G	1.000 EA
35GS1022A03SP	GASKET BOX .125 THK WHITE NEOPRENE	1.000 EA
51XB1016A08	10-16X 1/2HXWSSLD SERTYB	2.000 EA
11XW1032G06	10-32 X .38, TAPTITE II, HEX WSHR SLTD U	1.000 EA
36EP3101A57MW	FRONT ENDPLATE, MACH. W/WHITE EPOXY	1.000 EA
HW4032A01	BLACK DRAIN PLUG FOR WASH DOWN MOTORS	3.000 EA
HW5100A05	WVY WSHR F/205 & 304 BRGS	1.000 EA
36EP3301A27MW	PU ENDPLATE, MACH W/WHITE EPOXY	1.000 EA
HW4032A01	BLACK DRAIN PLUG FOR WASH DOWN MOTORS	3.000 EA
HW4600B50SP	SEAL 1.156 X 1.874 X 0.250 SINGLE LIP DB	1.000 EA
10XN2520S26	1/4-20X 1 5/8 HEX HD SS	4.000 EA
11XW1032S06	10-32 X .38, TAPTITE II, HEX WSHR SLTD U	3.000 EA
36CB4518	36 LIPPED CB LID AUTOPHORETIC	1.000 EA
37GS3010SP	1/16"WHITE LID GASKET	1.000 EA
59XW0832S07	TAPTITE II,HEX WSHR UNSLTD SER,410 S.S.,	4.000 EA
HA1005A03SP	SLINGER, OD 1.750, ID .938, 205 BRG	1.000 EA
HW4600B36SP	V-RING SLINGER 1.188 X 1.690 X 0.240	1.000 EA
HW2502E16	#303 SS,SQ KEY 1/4 X 1.750	1.000 EA
HA7000A02	KEY RETAINER RING, 1 1/8 DIA, 1 3/8 DIA	1.000 EA
MJ5001A01	46-665 RED SEALER	0.001 QT
85XU0407S04	4X1/4 U DRIVE PIN STAINLESS	2.000 EA

Parts List (continued)		
Part Number	Description	Quantity
HW3200A01	3/8-16X3/4 I-BLT WELDED F/S	1.000 EA
36CB3005A03W	36 CB .75 NPT @ 6 W/WHITE EPOXY	1.000 EA
MJ1000A75	GREASE, POLYREX EM EXXON	0.050 LB
51XB1214A16	12-14X1.00 HXWSSLD SERTYB	1.000 EA
36FH4010	IEC FH NO GREASER - W/AUTOPHERETIC PRIME	1.000 EA
MG1025Z20	ACTIVATOR WILKOFAS 060.32	0.010 GA
MG1025W11	PAINT- 781-101 WILKOFAS WHITE EPOXY	0.022 GA
LB1164	LABEL,WARNING AND DRAIN	1.000 EA
LB1115	LABEL,LIFTING DEVICE	1.000 EA
HA3101S28	THRUBOLT- 1/4-20 X 12.50 SS	4.000 EA
LB1125C02	SUPER-E (STOCK CTN LABEL SUPER-E WITH FL	1.000 EA
LC0005	CONN.DIA.,TY M,9-LD,DUAL VOLT,REVERSING	1.000 EA
LB1357	ENERGY GUIDE LABEL (BOX LABEL)	1.000 SH
NP1669L	SS WD SUPER-E UL CSA-EEV PREM REV MTG	1.000 EA
G7PA1000	PACKAGING GROUP / BALDOR	1.000 EA

Performance Data at 460V, 60Hz, 2.0HP (Typical performance - Not guaranteed values)

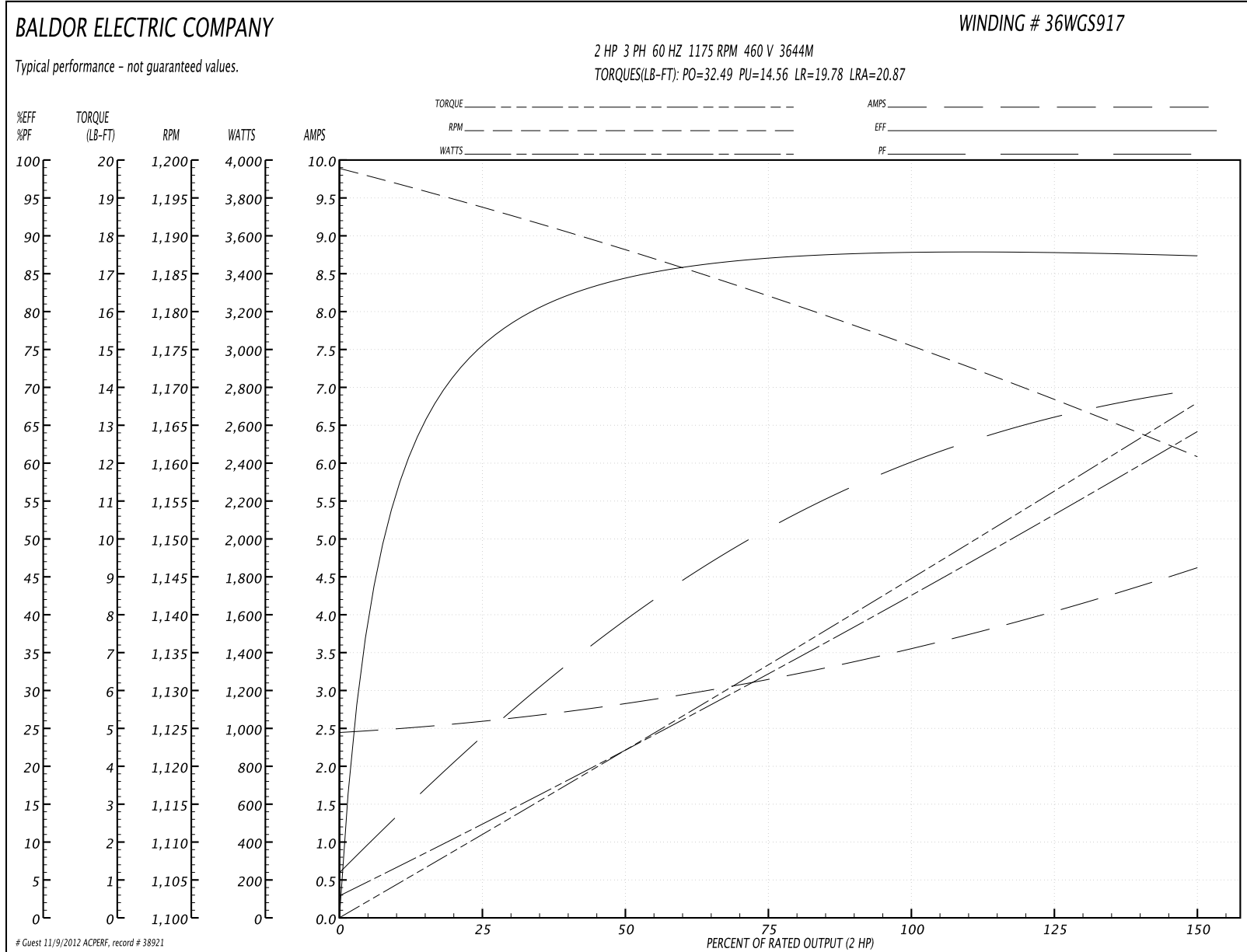
General Characteristics							
Full Load Torque:	8.91 LB-FT			Start Configuration:	DOL		
No-Load Current:	2.45 Amps			Break-Down Torque:	40.2 LB-FT		
Line-line Res. @ 25°C.:	4.2188 Ohms A Ph / 0.0 Ohms B Ph			Pull-Up Torque:	21.6 LB-FT		
Temp. Rise @ Rated Load:	34 C			Locked-Rotor Torque:	28.2 LB-FT		
Temp. Rise @ S.F. Load:	39 C			Starting Current:	27.5 Amps		
Load Characteristics							
% of Rated Load	25	50	75	100	125	150	S.F.
Power Factor:	24.0	40.0	52.0	60.0	66.0	70.0	64.0
Efficiency:	76.4	85.3	88.0	88.9	88.8	88.4	88.8
Speed:	1196.9	1191.4	1185.5	1179.4	1172.7	1165.5	1175.0
Line Amperes:	2.53	2.76	3.09	3.49	3.97	4.52	3.78

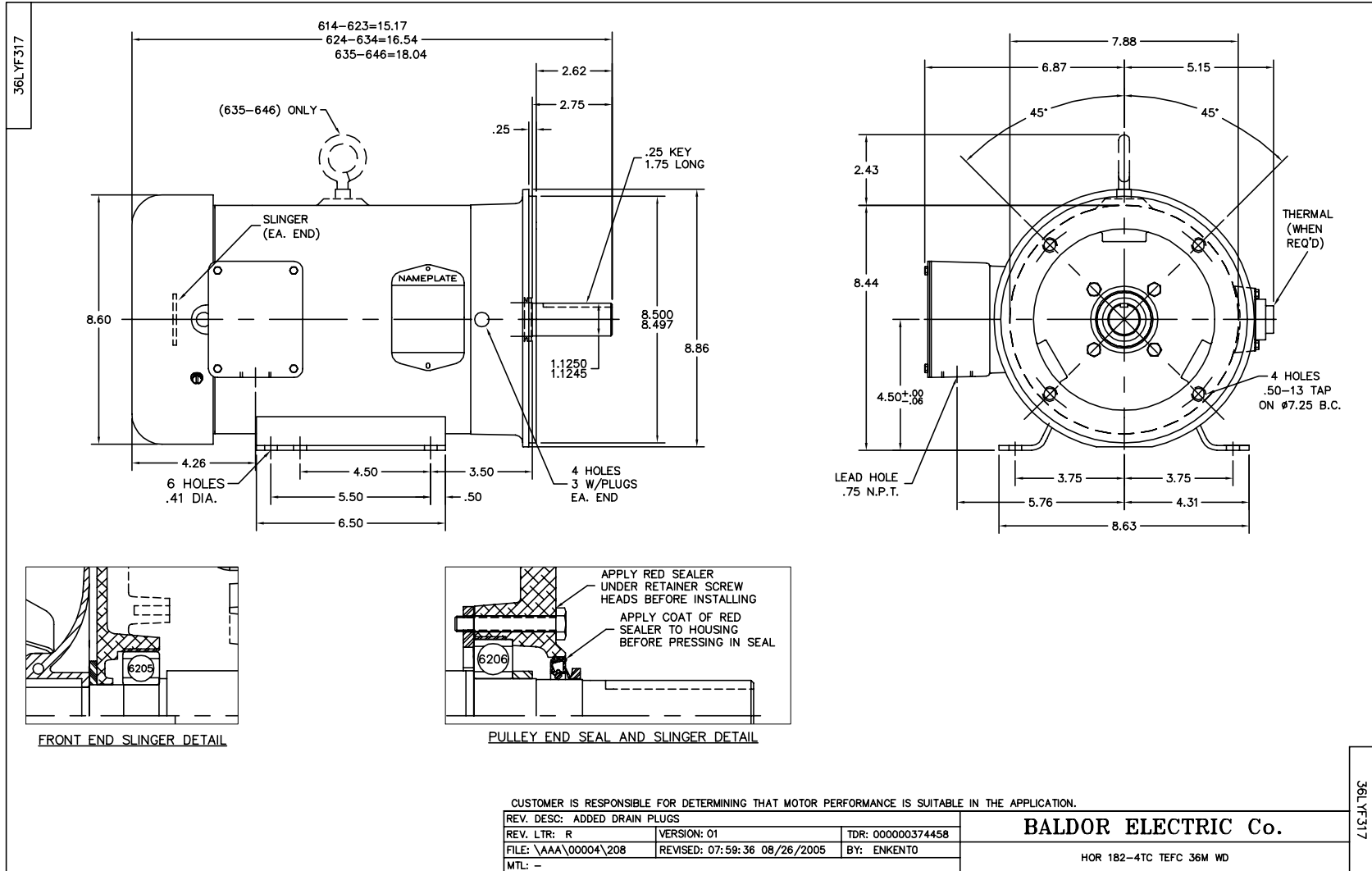
Performance Graph at 460V, 60Hz, 2.0HP Typical performance - Not guaranteed values



Performance Data at 460V, 60Hz, 2.0HP (Typical performance - Not guaranteed values)							
General Characteristics							
Full Load Torque:	8.96 LB-FT			Start Configuration:	DOL		
No-Load Current:	2.47 Amps			Break-Down Torque:	32.49 LB-FT		
Line-line Res. @ 25°C.:	4.2189 Ohms A Ph / 0.0 Ohms B Ph			Pull-Up Torque:	14.56 LB-FT		
Temp. Rise @ Rated Load:	46 C			Locked-Rotor Torque:	19.78 LB-FT		
Temp. Rise @ S.F. Load:	53 C			Starting Current:	20.87 Amps		
Load Characteristics							
% of Rated Load	25	50	75	100	125	150	S.F.
Power Factor:	24.0	40.0	51.0	60.0	66.0	70.0	64.0
Efficiency:	75.6	84.4	87.0	87.8	87.7	87.2	87.7
Speed:	1193.7	1188.1	1182.0	1175.4	1168.4	1160.8	1171.0
Line Amperes:	2.57	2.81	3.15	3.58	4.07	4.6	3.87

Performance Graph at 460V, 60Hz, 2.0HP Typical performance - Not guaranteed values

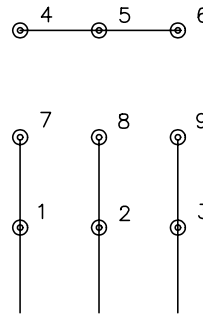




CD0005

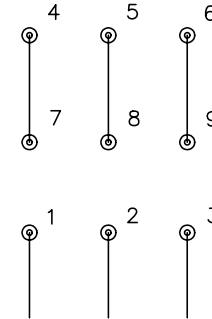


LOW VOLTAGE
(2Y)



LINE

HIGH VOLTAGE
(1Y)



LINE

NOTES:

1. INTERCHANGE ANY TWO LINE LEADS TO REVERSE ROTATION.
2. OPTIONAL THERMOSTATS ARE PROVIDED WHEN SPECIFIED.
3. ACTUAL NUMBER OF INTERNAL PARALLEL CIRCUITS MAY BE A MULTIPLE OF THOSE SHOWN ABOVE.
4. LEAD COLORS ARE OPTIONAL. LEADS MUST ALWAYS BE NUMBERED AS SHOWN.

REV. DESC: REVISE TO SHOW OPTIONAL COLORS			
REV. LTR: E	BY: JLP	REVISED: 01/19/99 10:15	TDR: 0171435
90000		FILE: AAA00005140	MDL: -
		MTL: -	

BALDOR ELECTRIC Co.

3PH, DV, 9 LEADS

CD0005