

# **BALDOR**® • *RELIANCE*

## Product Information Packet

# CFM3156A

1HP,1140RPM,3PH,60HZ,56YZ,3524M,OPEN,F1

Copyright © All product information within this document is subject to Baldor Electric Company copyright © protection, unless otherwise noted.

Part Detail							
Revision:	AD	Status:	PRD/A	Change #:		Proprietary:	No
Type:	AC	Prod. Type:	3524M	Elec. Spec:	35WGY730	CD Diagram:	
Enclosure:	OPEN	Mfg Plant:		Mech. Spec:	35K306	Layout:	
Frame:	56YZ	Mounting:	F1	Poles:	06	Created Date:	
Base:	N	Rotation:	R	Insulation:	F	Eff. Date:	02-28-2012
Leads:	12#18	Literature:		Elec. Diagram:		Replaced By:	

Nameplate NP1257L									
CAT.NO.	CFM3156A								
SPEC.	35K306Y730								
HP	1								
VOLTS	208-230/460								
AMP	3.6-3.4/1.7								
RPM	1140								
FRAME	56YZ	HZ	60	PH	3				
SER.F.	1.15	CODE	G	DES	B	CL	F		
NEMA-NOM-EFF	75.5	PF	69						
RATING	60C AMB-CONT								
CC				USABLE AT 208V	3.6				
DE	6203	ODE	6205						
ENCL	OPEN	SN							

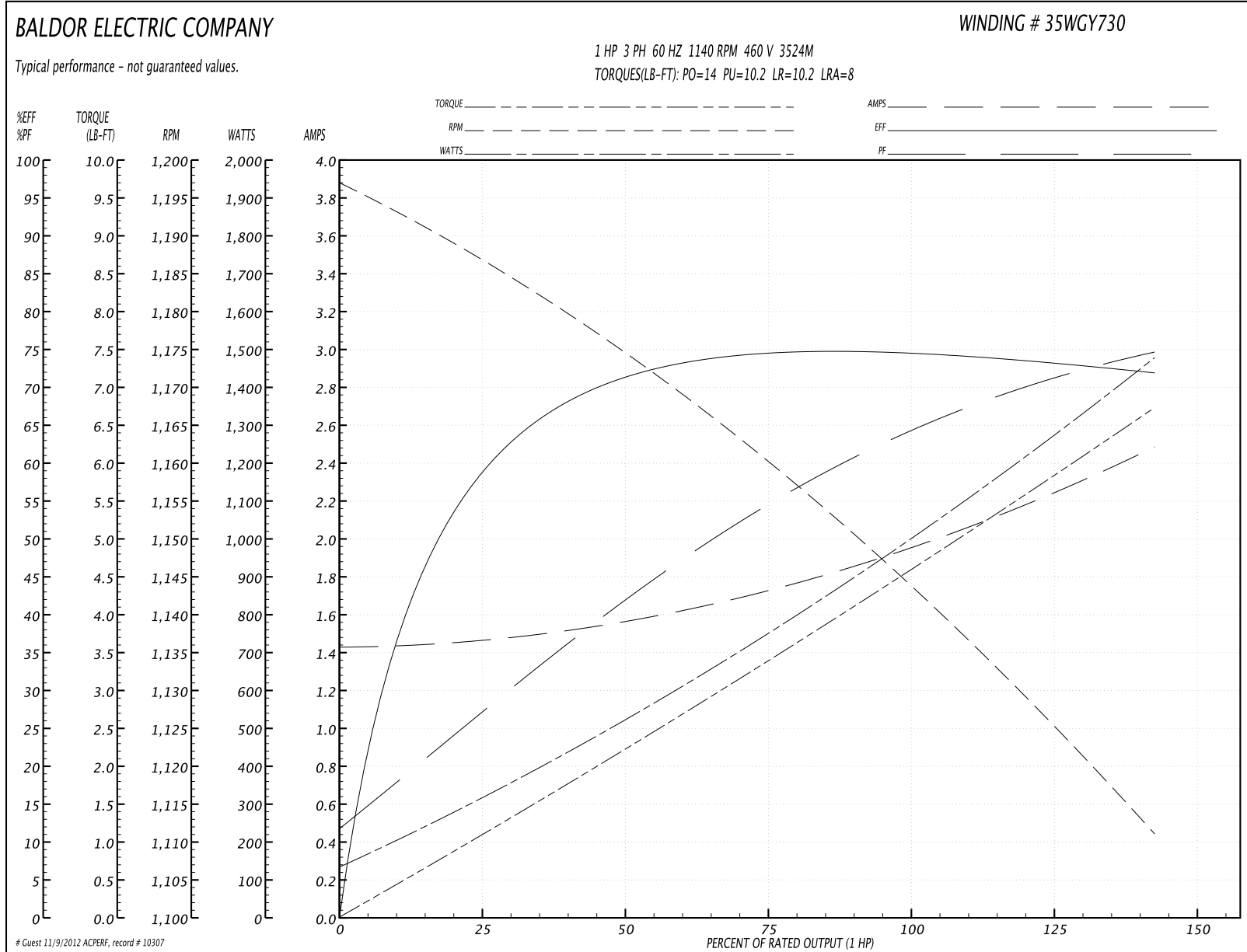
Parts List		
Part Number	Description	Quantity
SA026292	SA 35K306Y730	1.000 EA
RA022342	RA 35K306Y730	1.000 EA
TPMYJ42WM	THERMAL 3PH .75 AUT 135	1.000 EA
RM1001A01	GROMMET (MIDSTATES#541000)	1.000 EA
53XT0832G07	8-32X7/16 PN STD SR TY23G X	1.000 EA
HA6001A01	THERMAL RETAINER (PLATED)	1.000 EA
51XW0832A07	8-32 X .44, TAPTITE II, HEX WSHR SLTD SE	2.000 EA
35EP3200A02	STD PU ENDPLATE-OPEN-205 BRG	1.000 EA
51XW0832A07	8-32 X .44, TAPTITE II, HEX WSHR SLTD SE	2.000 EA
MJ5004A05	#242-21 LOCTITE GENERAL PURPOSE MED. STR	0.010 EA
HW5100A03SP	WAVY WASHER (W1543-017)	1.000 EA
35EP3102B42	PUEP SH THRU HOLE .50 NPT, 2 #26 DRILL F	1.000 EA
XY1032A02	10-32 HEX NUT DIRECTIONAL SERRATION	4.000 EA
35CB4500SP	TERMINAL BOX LID STAMPED	1.000 EA
HA1041A01	CUPPED SLINGER KENCO	1.000 EA
HW2501D40	KEY, 3/16 SQ X 4.750	1.000 EA
HA7000A04	KEY RETAINER 0.625 DIA SHAFTS	1.000 EA
85XU0407S04	4X1/4 U DRIVE PIN STAINLESS	2.000 EA
10XN2520A06	1/4 20X3/8 HX HD CAP	3.000 EA
MJ1000A75	GREASE, POLYREX EM EXXON	0.050 LB
35GS1002A02	GASKET,1/16 THICK NEOPRE.FT.SMITH MADE	1.000 EA
51XW0832A07	8-32 X .44, TAPTITE II, HEX WSHR SLTD SE	2.000 EA
MG1000G27	PAINT- S9282E CHARCOAL GREY	0.017 GA
SP5079A02	MODEL 35 3PH TERM PANEL CONN 12LD DUAL V	1.000 EA

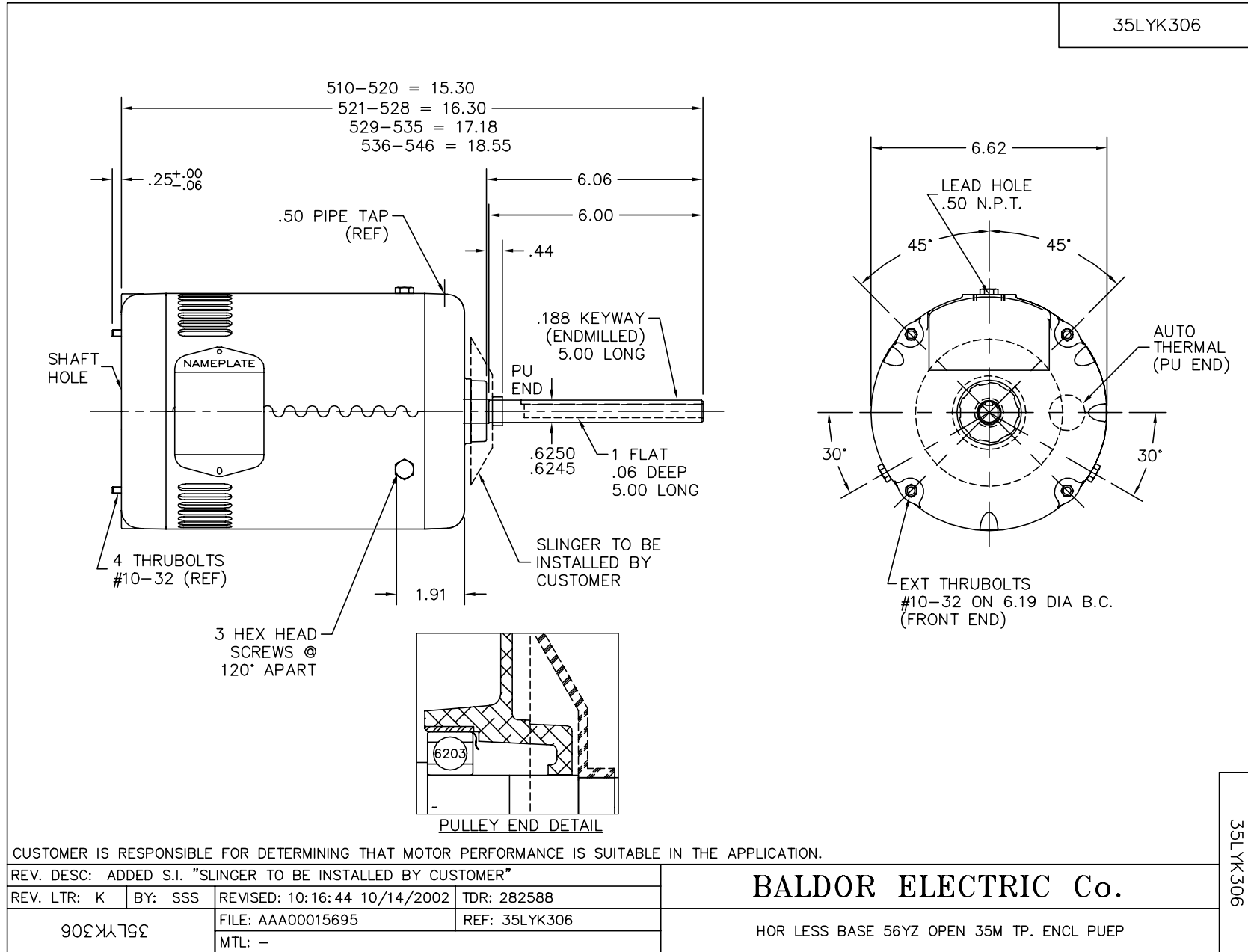
Parts List (continued)		
Part Number	Description	Quantity
HA3100A19	THRUBOLT 10-32 X 9.625	4.000 EA
LB1118	LABEL,WARNING (ROLL LABEL)	1.000 EA
LB1125C01	STD (STOCK) CARTON LABEL BALDOR WITH FLA	1.000 EA
LC0007A01	CONN LABEL TYPE M,DV,REV,12LD 2Y/1Y TERM	1.000 EA
NP1257L	ALUM UL CSA CC THERMAL REV MTG	1.000 EA
36PA1000	PACK GROUP W/LB5001	1.000 EA

**Performance Data at 460V, 60Hz, 1.0HP (Typical performance - Not guaranteed values)**

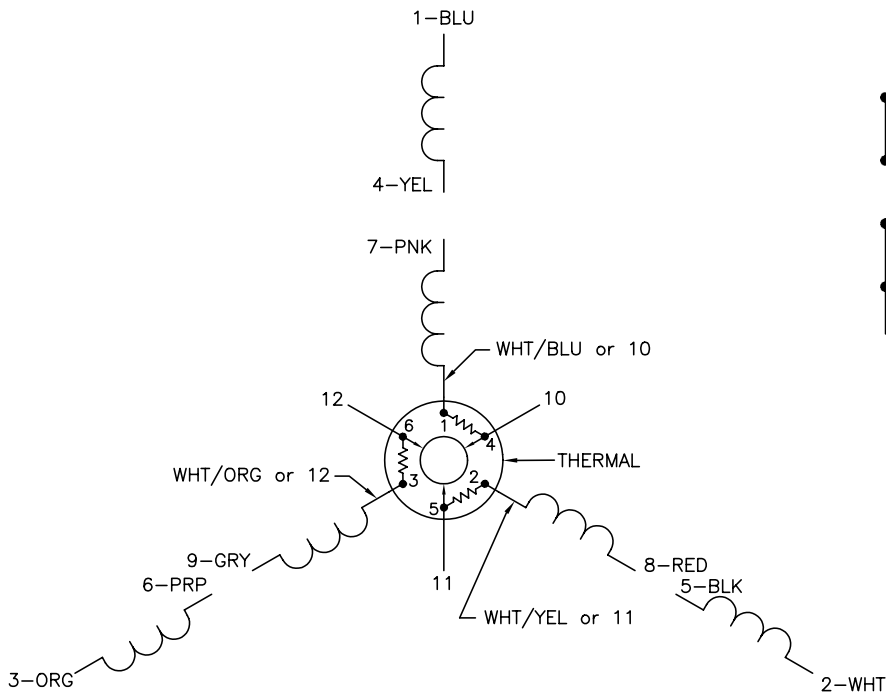
General Characteristics							
Full Load Torque:	4.5 LB-FT			Start Configuration:	DOL		
No-Load Current:	1.4 Amps			Break-Down Torque:	14.0 LB-FT		
Line-line Res. @ 25°C.:	24.9 Ohms A Ph / 0.0 Ohms B Ph			Pull-Up Torque:	10.2 LB-FT		
Temp. Rise @ Rated Load:	44 C			Locked-Rotor Torque:	10.2 LB-FT		
Temp. Rise @ S.F. Load:	54 C			Starting Current:	8.0 Amps		
Load Characteristics							
% of Rated Load	25	50	75	100	125	150	S.F.
Power Factor:	31.0	47.0	58.0	66.0	72.0	77.0	70.0
Efficiency:	59.6	71.1	74.1	74.6	73.9	71.7	74.2
Speed:	1186.0	1173.0	1160.0	1146.0	1131.0	1109.0	1137.0
Line Amperes:	1.5	1.6	1.7	1.9	2.2	2.5	2.1

Performance Graph at 460V, 60Hz, 1.0HP Typical performance - Not guaranteed values

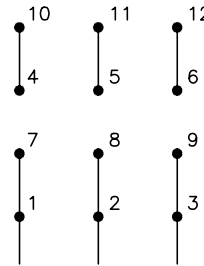




CD0007

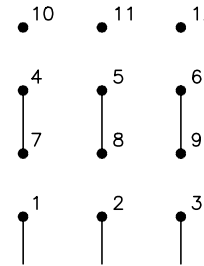


LOW VOLTAGE  
(2Y)



LINE

HIGH VOLTAGE  
(1Y)



LINE

NOTES:

1. INTERCHANGE ANY TWO LINE LEADS TO REVERSE ROTATION.
2. ACTUAL NUMBER OF INTERNAL PARALLEL CIRCUITS MAY VARY.
3. LEAD COLORS ARE OPTIONAL. LEADS MUST ALWAYS BE NUMBERED AS SHOWN.

REV. DESC: ADDED "CK" PLANT CODE			
REV. LTR: E	BY: EAH	REVISED: 05/06/99 17:1	TDR: 0181040
L00000		FILE: AAA00008370	MDL: -
		MTL: -	

**BALDOR ELECTRIC Co.**

3PH, DV, THERMAL, 12 LEADS

CD0007