

BALDOR® • **RELIANCE**

Product Information Packet

CHC144A

.25HP, 1725RPM, 1PH, 60HZ, 48Z, 1712C, TEAO, F1

Copyright © All product information within this document is subject to Baldor Electric Company copyright © protection, unless otherwise noted.

Part Detail							
Revision:	X	Status:	PRD/A	Change #:		Proprietary:	No
Type:	AC	Prod. Type:	1712C	Elec. Spec:	17WGW029	CD Diagram:	
Enclosure:	TEAO	Mfg Plant:		Mech. Spec:	17K043	Layout:	
Frame:	48Z	Mounting:	F1	Poles:	04	Created Date:	
Base:	RS	Rotation:	RS	Insulation:	B	Eff. Date:	05-05-2011
Leads:	7#18	Literature:		Elec. Diagram:		Replaced By:	

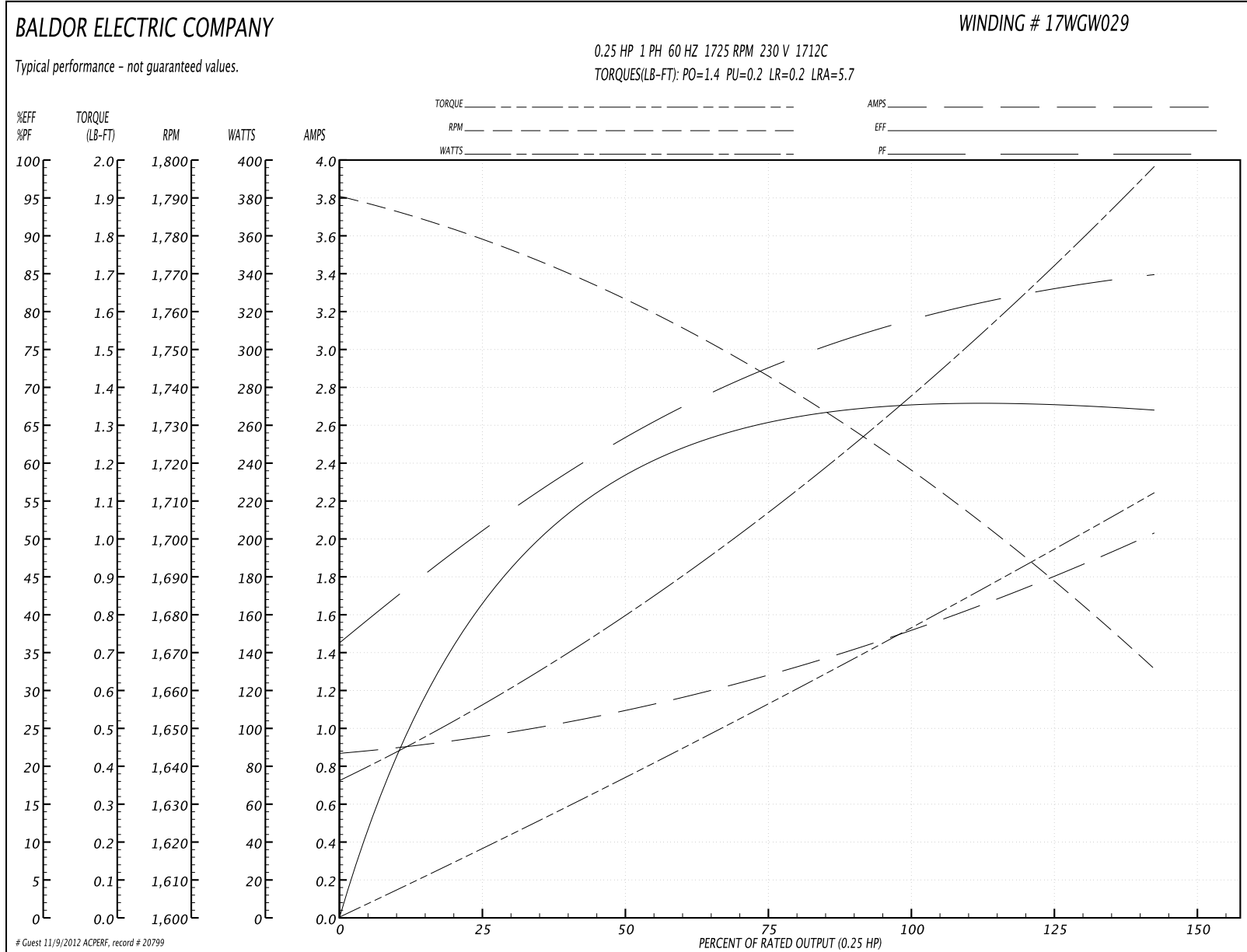
Nameplate NP1203A01							
CAT.NO.	CHC144A	ENCL	TEAO				
SPEC.	17K043W029	FRAME	48Z				
HP	.25						
VOLTS	115/230						
AMPS	3/1.5						
RPM	1725						
HZ	60	PH	1	CL	B		
SER.F.	1.00	DES	-	CODE	F		
FL EFF	66	PF					
RATING	40C AMB-CONT						
SF AMP		USABLE AT 208V	1.6				
S/N							
MANUAL	N	AUTO	Y	NONE	N		

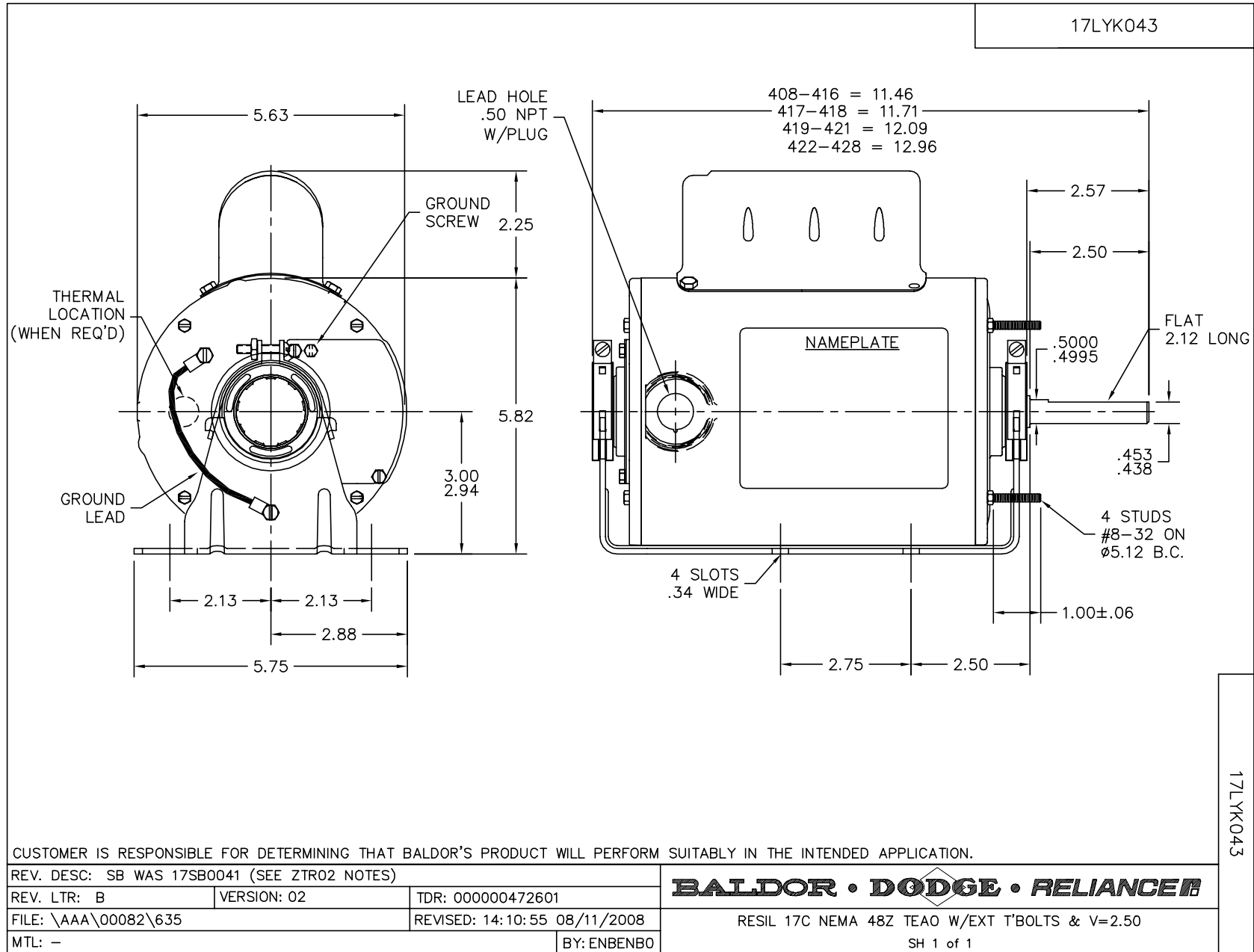
Parts List		
Part Number	Description	Quantity
SA081987	SA 17K043W029	1.000 EA
RA075325	RA 17K043W029	1.000 EA
OC2005F01	OVL OIL CAP 5MFD/370V	1.000 EA
TB0167A02	6 POS SHORT FOOT 300 SERIES (27-20 AWG)	1.000 EA
WD1540A03	TERMINAL, 187 SERIES 300 SERIES MAG-MATE	4.000 EA
WD1540A04	TERMINAL, 187 SERIES 300 SERIES MAG-MATE	2.000 EA
WD4100A49	CAPLUG,BP-13/16,PLUG W/RECESSED HEAD	1.000 EA
11XT0832G06	8-32 X 3/8 TY 23 TAPPING	1.000 EA
LD5000A52	LEAD ASSY W/INTERNAL STAR RING TERMINALS	1.000 EA
11XT1032A06	10-32 X 3/8 HX WSHR HD SLTD TYPE 23	2.000 EA
51XW0832A07	8-32 X .44, TAPTITE II, HEX WSHR SLTD SE	4.000 EA
17EP3200DT01	FR ENDPLATE, MACH W/HUB	1.000 EA
RM1000A03SP	CUSHION RING, MDL 17-33-34	1.000 EA
HA6004A01A	CLAMP CUSHION RING ASSY	1.000 EA
34CB4501SP	TERMINAL BOX LID, STAMPED X (PLATED)	1.000 EA
33CB4800A02	CAPACITOR COVER, STAMPED	1.000 EA
35GS3001A02	GASKET, CA.COVER, 5.38 LONG .06 CS301	1.000 EA
34GS5003	FOAM SLEEVE, ID = 2 1/16" X 3 3/8"	1.000 EA
51XB1016A05	10-16X5/16HX WA SL SR TYB (F/S)	2.000 EA
HW5100A03SP	WAVY WASHER (W1543-017)	1.000 EA
17EP3100D01	PU ENDPLATE, MACH W/HUB ENCLOSED	1.000 EA
XY0832A02	8-32 HEX NUT	4.000 EA
RM1000A03SP	CUSHION RING, MDL 17-33-34	1.000 EA
HA6004A01A	CLAMP CUSHION RING ASSY	1.000 EA

Parts List (continued)		
Part Number	Description	Quantity
34GS1005	GASKET, TERM PLATE LID	1.000 EA
51XW0832A07	8-32 X .44, TAPTITE II, HEX WSHR SLTD SE	2.000 EA
SP5126	MDL 17L TERM PANEL 3 PH W/TABS & 3/4 THE	1.000 EA
34BA4001A01A	RESILIENT BASE, 408-416 AUTOPHORETIC	1.000 EA
HA3169A23	THRUBOLT #8-32 THDS X 8.44 LONG	4.000 EA
LB1171	LABEL CARTON 6X6 ON LINE BLANK ROLLS	1.000 EA
LB5040	INSTRUCTION TAG, AC & DC	1.000 EA
NP1203A01	NP LABEL 1PH, DV, REV (FOR COMMERCIAL MO	1.000 EA
34PA1002	PACKING GROUP, BALDOR	1.000 EA
LD53517	LEAD ASSY. MAG MATE	1.000 EA
LD5000A102	LEAD ASSY, 16 GA, RED, #8, W/FLAG TERMS	1.000 EA

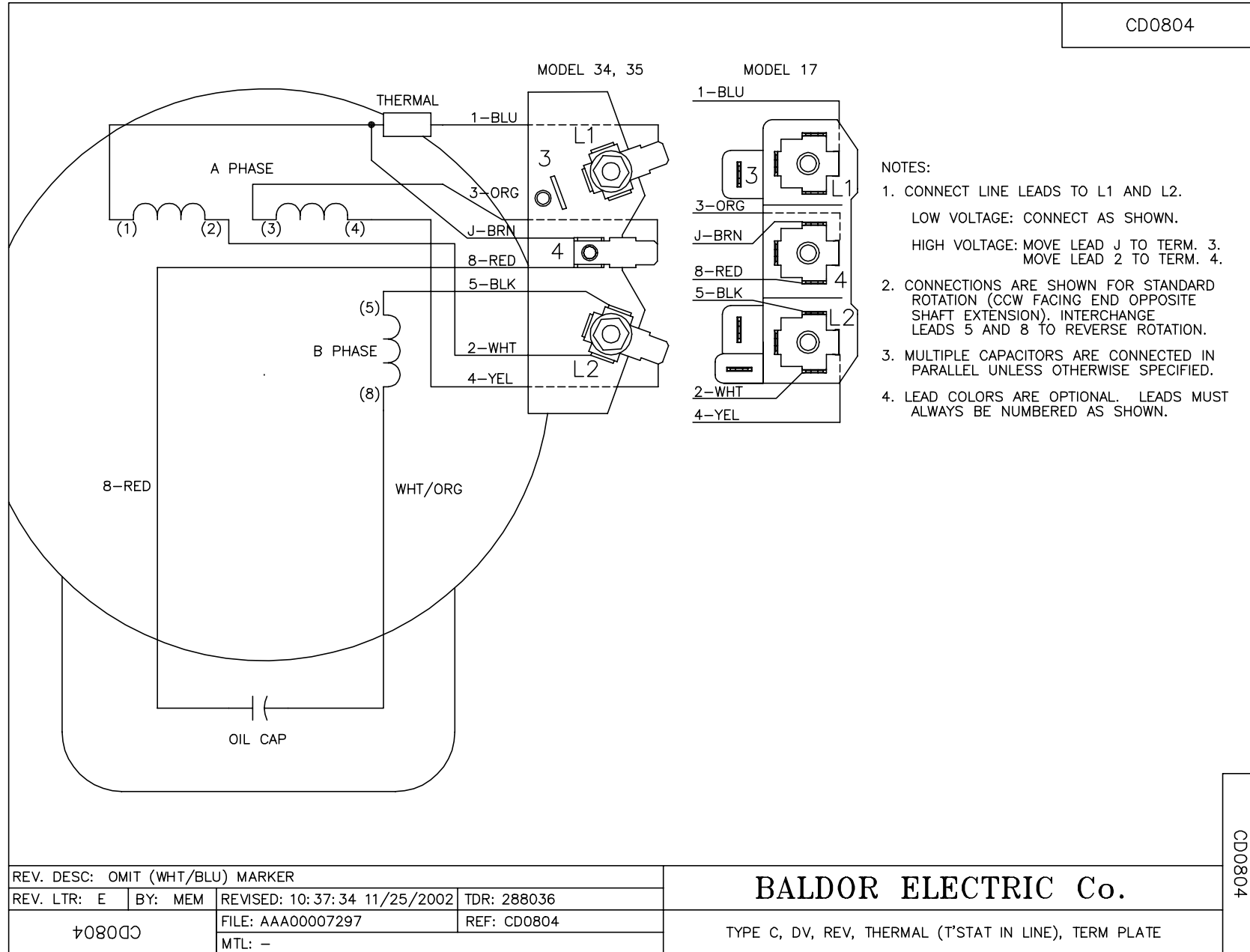
Performance Data at 230V, 60Hz, 0.25HP (Typical performance - Not guaranteed values)							
General Characteristics							
Full Load Torque:	0.75 LB-FT			Start Configuration:	DOL		
No-Load Current:	0.86 Amps			Break-Down Torque:	1.4 LB-FT		
Line-line Res. @ 25°C.:	14.7 Ohms A Ph / 39.5 Ohms B Ph			Pull-Up Torque:	0.2 LB-FT		
Temp. Rise @ Rated Load:	38 C			Locked-Rotor Torque:	0.2 LB-FT		
Temp. Rise @ S.F. Load:				Starting Current:	5.7 Amps		
Load Characteristics							
% of Rated Load	25	50	75	100	125	150	S.F.
Power Factor:	52.0	65.0	73.0	79.0	83.0	85.0	0.0
Efficiency:	41.3	58.3	65.4	67.9	68.1	66.8	0.0
Speed:	1778.0	1760.0	1744.0	1721.0	1697.0	1663.0	0.0
Line Amperes:	0.96	1.12	1.27	1.5	1.73	2.05	0.0

Performance Graph at 230V, 60Hz, 0.25HP Typical performance - Not guaranteed values





CD0804



CD0804

REV. DESC: OMIT (WHT/BLU) MARKER			
REV. LTR: E	BY: MEM	REVISED: 10:37:34 11/25/2002	TDR: 288036
CD0804		FILE: AAA00007297	REF: CD0804
		MTL: -	

BALDOR ELECTRIC Co.

TYPE C, DV, REV, THERMAL (T'STAT IN LINE), TERM PLATE