

BALDOR® • *RELIANCE*

Product Information Packet

CHC244A

.33HP, 1700RPM, 1PH, 60HZ, 48Z, 1714C, TEAO, F1

Copyright © All product information within this document is subject to Baldor Electric Company copyright © protection, unless otherwise noted.

Part Detail							
Revision:	Z	Status:	PRD/A	Change #:		Proprietary:	No
Type:	AC	Prod. Type:	1714C	Elec. Spec:	17WGW389	CD Diagram:	
Enclosure:	TEAO	Mfg Plant:		Mech. Spec:	17K043	Layout:	
Frame:	48Z	Mounting:	F1	Poles:	04	Created Date:	
Base:	RS	Rotation:	RS	Insulation:	B	Eff. Date:	06-25-2012
Leads:	7#18	Literature:		Elec. Diagram:		Replaced By:	

Nameplate NP1203A01							
CAT.NO.	CHC244A	ENCL	TEAO				
SPEC.	17K043W389	FRAME	48Z				
HP	.33 AIR OVER						
VOLTS	115/230						
AMPS	4.2/2.1						
RPM	1700						
HZ	60	PH	1	CL	B		
SER.F.	1.15	DES	-	CODE	G		
FL EFF	62	PF					
RATING	40C AMB-CONT						
SF AMP		USABLE AT 208V	2.2				
S/N							
MANUAL	N	AUTO	Y	NONE	N		

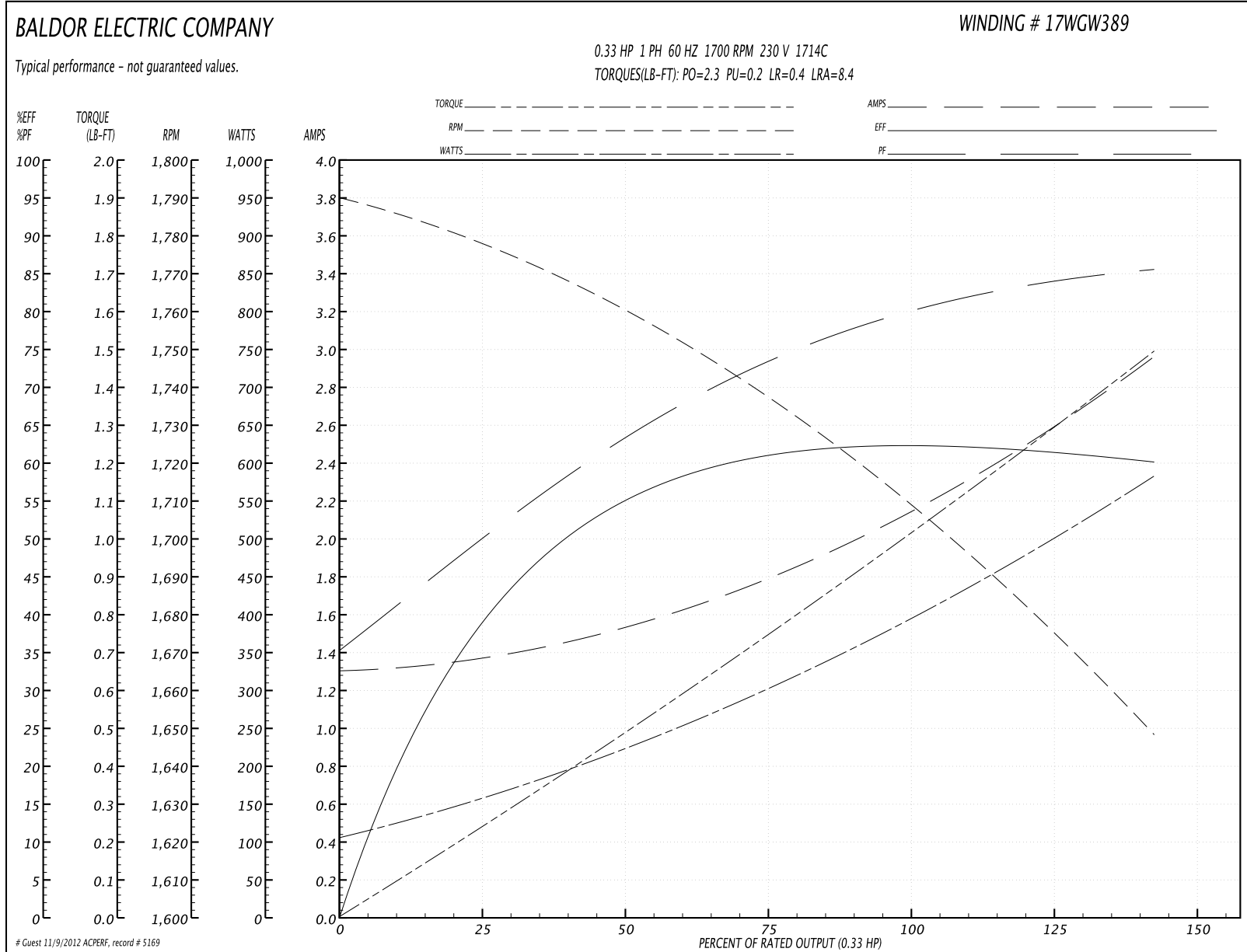
Parts List		
Part Number	Description	Quantity
SA070521	SA 17K043W389	1.000 EA
RA064410	RA 17K043W389	1.000 EA
OC3015C08	CYL OIL CAP M23P2415M00 15 MFD/240V 1 1	1.000 EA
TB0167A02	6 POS SHORT FOOT 300 SERIES (27-20 AWG)	1.000 EA
WD1540A03	TERMINAL, 187 SERIES 300 SERIES MAG-MATE	4.000 EA
WD1540A04	TERMINAL, 187 SERIES 300 SERIES MAG-MATE	2.000 EA
WD4100A49	CAPLUG,BP-13/16,PLUG W/RECESSED HEAD	1.000 EA
11XT0832G06	8-32 X 3/8 TY 23 TAPPING	1.000 EA
LD5000A52	LEAD ASSY W/INTERNAL STAR RING TERMINALS	1.000 EA
11XT1032A06	10-32 X 3/8 HX WSHR HD SLTD TYPE 23	2.000 EA
51XW0832A07	8-32 X .44, TAPTITE II, HEX WSHR SLTD SE	4.000 EA
17EP3200DT01	FR ENDPLATE, MACH W/HUB	1.000 EA
RM1000A03SP	CUSHION RING, MDL 17-33-34	1.000 EA
HA6004A01A	CLAMP CUSHION RING ASSY	1.000 EA
34CB4501SP	TERMINAL BOX LID, STAMPED X (PLATED)	1.000 EA
33CB4800A02	CAPACITOR COVER, STAMPED	1.000 EA
35GS3001A02	GASKET, CA.COVER, 5.38 LONG .06 CS301	1.000 EA
34GS5003	FOAM SLEEVE, ID = 2 1/16" X 3 3/8"	1.000 EA
51XB1016A05	10-16X5/16HX WA SL SR TYB (F/S)	2.000 EA
HW5100A03SP	WAVY WASHER (W1543-017)	1.000 EA
17EP3100D01	PU ENDPLATE, MACH W/HUB ENCLOSED	1.000 EA
XY0832A02	8-32 HEX NUT	4.000 EA
RM1000A03SP	CUSHION RING, MDL 17-33-34	1.000 EA
HA6004A01A	CLAMP CUSHION RING ASSY	1.000 EA

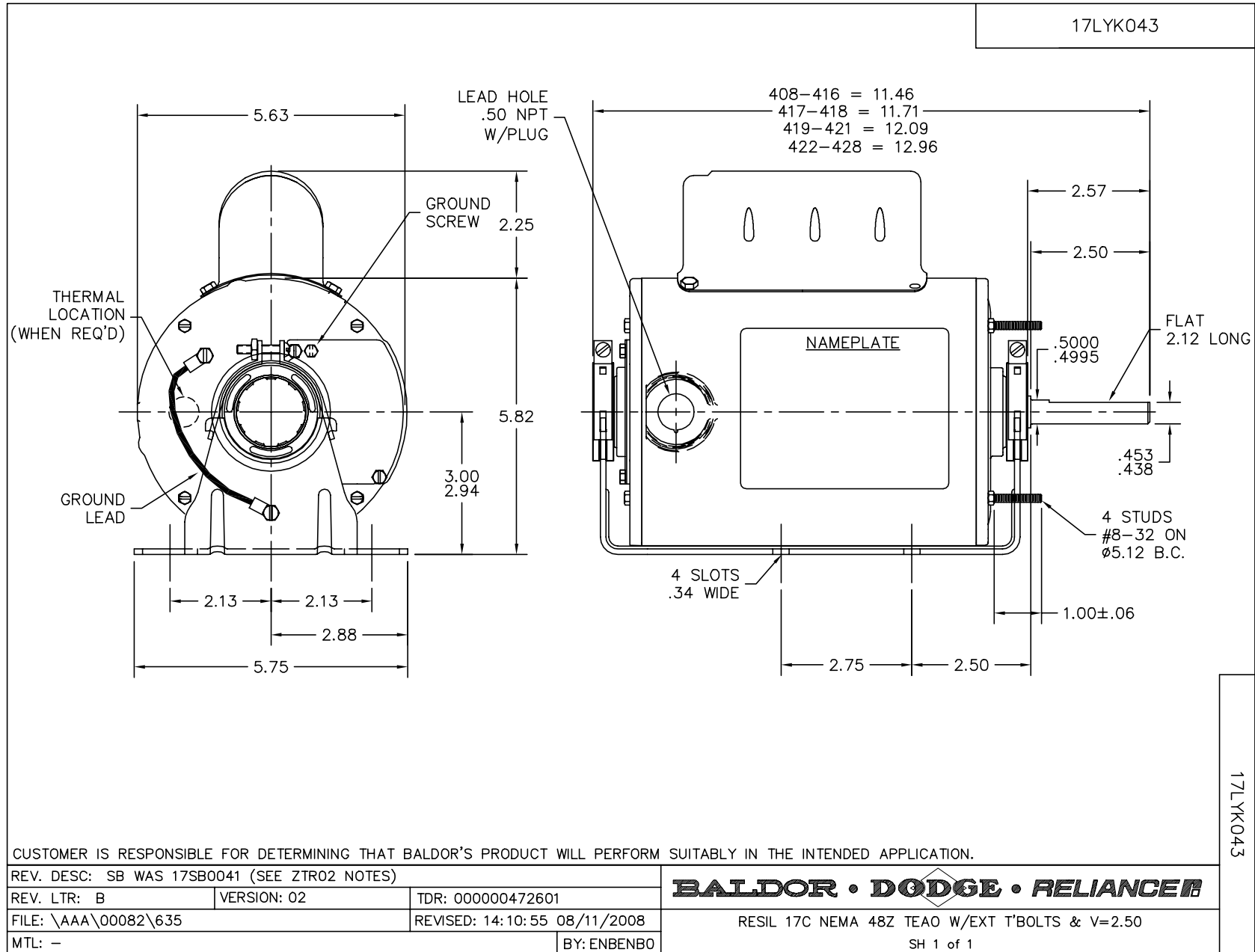
Parts List (continued)		
Part Number	Description	Quantity
34GS1005	GASKET, TERM PLATE LID	1.000 EA
51XW0832A07	8-32 X .44, TAPTITE II, HEX WSHR SLTD SE	2.000 EA
SP5126	MDL 17L TERM PANEL 3 PH W/TABS & 3/4 THE	1.000 EA
34BA4001A01A	RESILIENT BASE, 408-416 AUTOPHORETIC	1.000 EA
HA3169A23	THRUBOLT #8-32 THDS X 8.44 LONG	4.000 EA
LB1171	LABEL CARTON 6X6 ON LINE BLANK ROLLS	1.000 EA
LB5040	INSTRUCTION TAG, AC & DC	1.000 EA
NP1203A01	NP LABEL 1PH, DV, REV (FOR COMMERCIAL MO	1.000 EA
34PA1002	PACKING GROUP, BALDOR	1.000 EA
LD5000A102	LEAD ASSY, 16 GA, RED, #8, W/FLAG TERMS	1.000 EA
LD53517	LEAD ASSY. MAG MATE	1.000 EA

Performance Data at 230V, 60Hz, 0.33HP (Typical performance - Not guaranteed values)

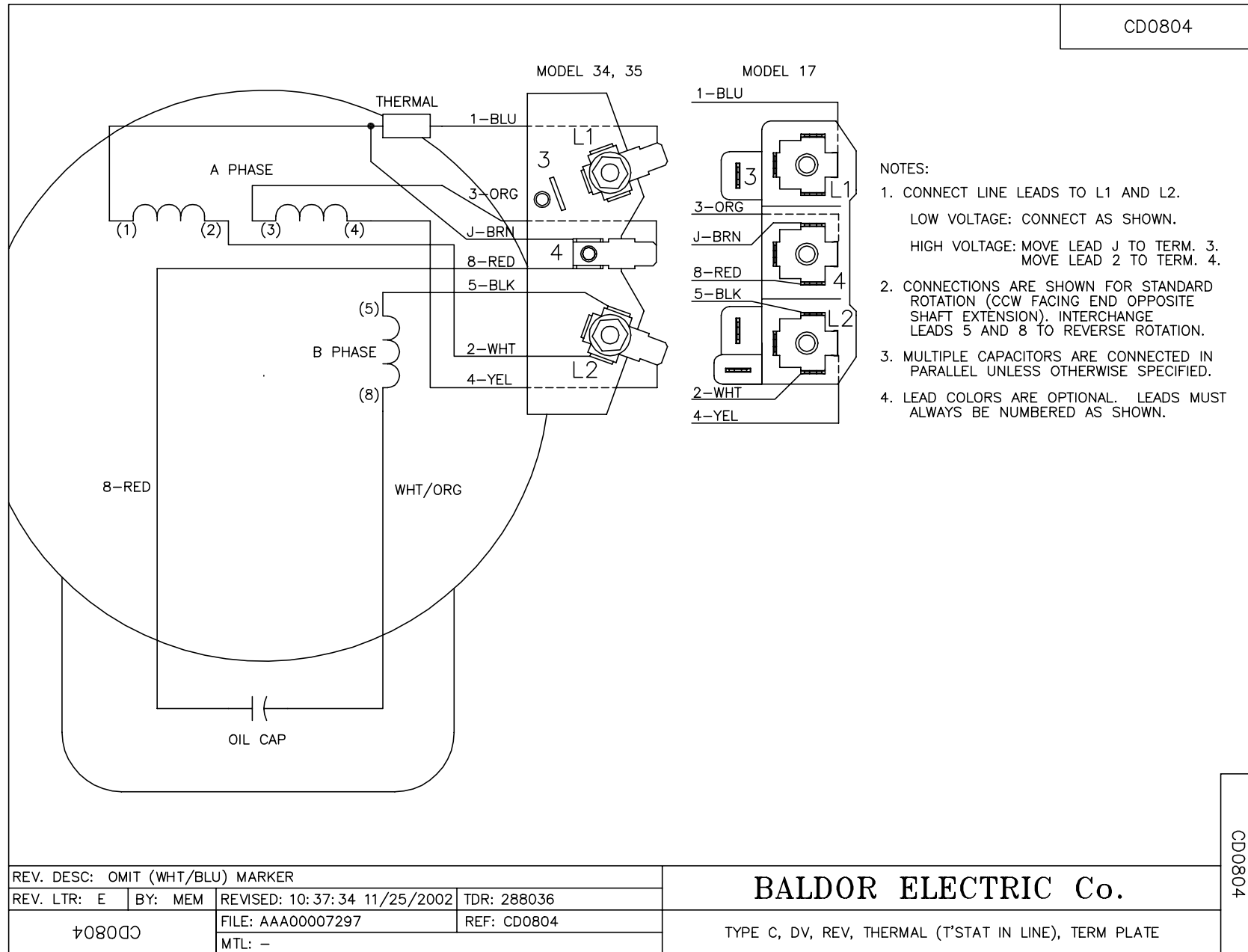
General Characteristics							
Full Load Torque:	1.0 LB-FT			Start Configuration:	DOL		
No-Load Current:	1.3 Amps			Break-Down Torque:	2.3 LB-FT		
Line-line Res. @ 25°C.:	9.73 Ohms A Ph / 11.9 Ohms B Ph			Pull-Up Torque:	0.2 LB-FT		
Temp. Rise @ Rated Load:	50 C			Locked-Rotor Torque:	0.4 LB-FT		
Temp. Rise @ S.F. Load:				Starting Current:	8.4 Amps		
Load Characteristics							
% of Rated Load	25	50	75	100	125	150	S.F.
Power Factor:	51.0	64.0	73.0	80.0	84.0	87.0	0.0
Efficiency:	38.8	54.6	60.7	63.1	62.5	59.5	0.0
Speed:	1776.0	1757.0	1737.0	1714.0	1682.0	1646.0	0.0
Line Amperes:	1.37	1.55	1.81	2.11	2.5	2.98	2.34

Performance Graph at 230V, 60Hz, 0.33HP Typical performance - Not guaranteed values





CD0804



CD0804

REV. DESC: OMIT (WHT/BLU) MARKER			
REV. LTR: E	BY: MEM	REVISED: 10:37:34 11/25/2002	TDR: 288036
CD0804		FILE: AAA00007297	REF: CD0804
		MTL: -	

BALDOR ELECTRIC Co.

TYPE C, DV, REV, THERMAL (T'STAT IN LINE), TERM PLATE