

BALDOR® • **RELIANCE**

Product Information Packet

CHC365A

.5HP, 1100RPM, 1PH, 60HZ, 56, 1728C, TEAO, F1

Copyright © All product information within this document is subject to Baldor Electric Company copyright © protection, unless otherwise noted.

Part Detail							
Revision:	T	Status:	PRD/A	Change #:		Proprietary:	No
Type:	AC	Prod. Type:	1728C	Elec. Spec:	17WGW419	CD Diagram:	
Enclosure:	TEAO	Mfg Plant:		Mech. Spec:	17K045	Layout:	
Frame:	56	Mounting:	F1	Poles:	06	Created Date:	
Base:	RS	Rotation:	RS	Insulation:	B	Eff. Date:	06-25-2012
Leads:	7#18	Literature:		Elec. Diagram:		Replaced By:	

Nameplate NP1203A01

CAT.NO.	CHC365A	ENCL	TEAO
SPEC.	17K045W419	FRAME	56
HP	.5 AIR OVER		
VOLTS	115/230		
AMPS	6.4/3.2		
RPM	1100		
HZ	60	PH	1 CL B
SER.F.	1.15	DES	- CODE F
FL EFF	68	PF	
RATING	40C AMB-CONT		
SF AMP		USABLE AT 208V	3.4
S/N			
MANUAL	N	AUTO	Y NONE N

Parts List		
Part Number	Description	Quantity
SA072143	SA 17K045W419	1.000 EA
RA065931	RA 17K045W419	1.000 EA
OC3012F12SP	CYL OIL CAP 12MFD/370V	1.000 EA
WD4100A49	CAPLUG,BP-13/16,PLUG W/RECESSED HEAD	1.000 EA
11XT0832G06	8-32 X 3/8 TY 23 TAPPING	1.000 EA
LD5000A52	LEAD ASSY W/INTERNAL STAR RING TERMINALS	1.000 EA
11XT1032A06	10-32 X 3/8 HX WSHR HD SLTD TYPE 23	2.000 EA
51XW0832A07	8-32 X .44, TAPTITE II, HEX WSHR SLTD SE	4.000 EA
RM1000A03SP	CUSHION RING, MDL 17-33-34	1.000 EA
HA6004A01A	CLAMP CUSHION RING ASSY	1.000 EA
34CB4501SP	TERMINAL BOX LID, STAMPED X (PLATED)	1.000 EA
33CB4800A02	CAPACITOR COVER, STAMPED	1.000 EA
35GS3001A02	GASKET, CA.COVER, 5.38 LONG .06 CS301	1.000 EA
34GS5003	FOAM SLEEVE, ID = 2 1/16" X 3 3/8"	1.000 EA
51XB1016A05	10-16X5/16HX WA SL SR TYB (F/S)	2.000 EA
HW5100A03SP	WAVY WASHER (W1543-017)	1.000 EA
17EP3100D01	PU ENDPLATE, MACH W/HUB ENCLOSED	1.000 EA
XY0832A02	8-32 HEX NUT	4.000 EA
RM1000A03SP	CUSHION RING, MDL 17-33-34	1.000 EA
HA6004A01A	CLAMP CUSHION RING ASSY	1.000 EA
34GS1005	GASKET, TERM PLATE LID	1.000 EA
51XW0832A07	8-32 X .44, TAPTITE II, HEX WSHR SLTD SE	2.000 EA
HW2501D13SP	KEY, 3/16 SQ X 1.375	1.000 EA
HA7000A04	KEY RETAINER 0.625 DIA SHAFTS	1.000 EA

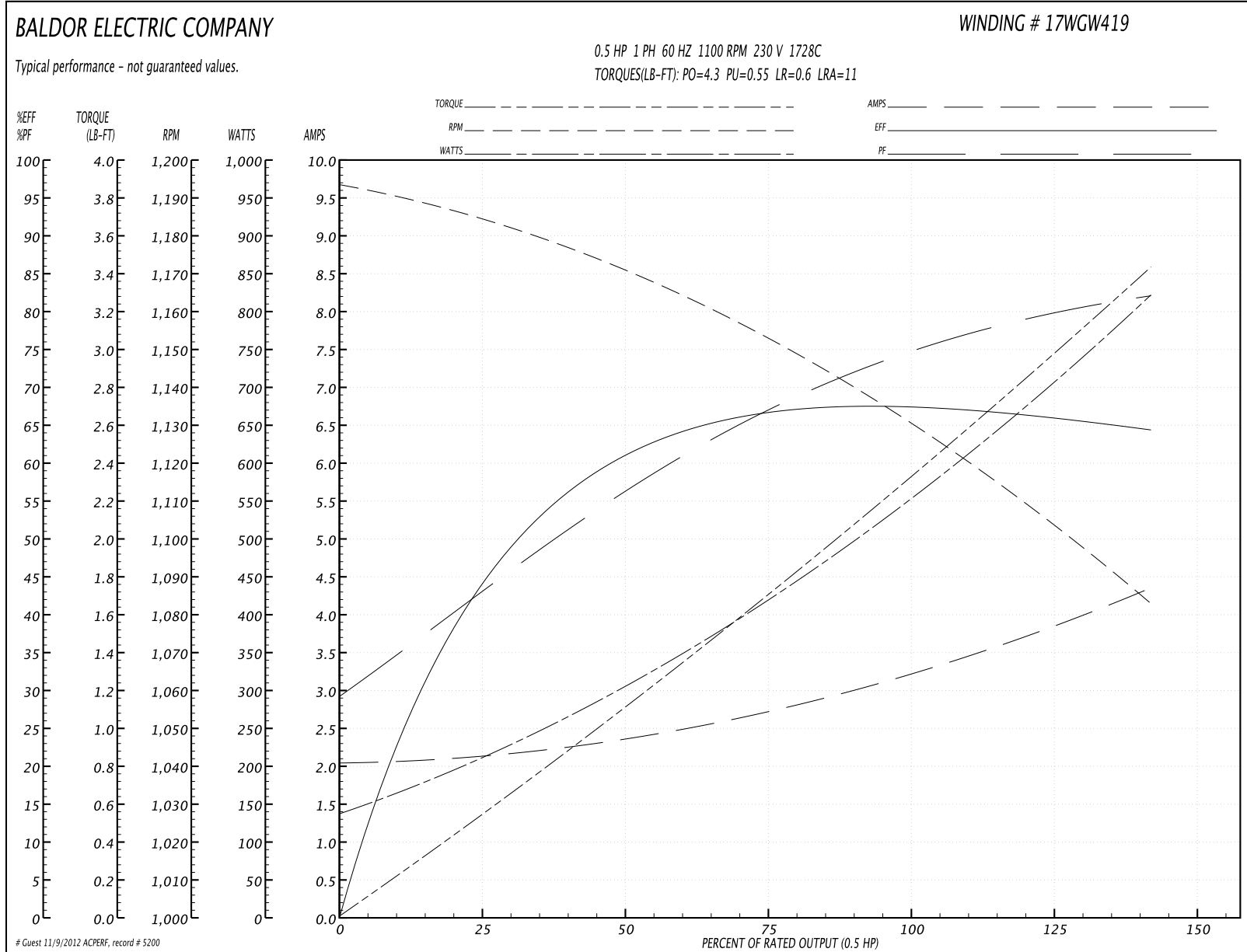
Parts List (continued)		
Part Number	Description	Quantity
17EP3200DT01	FR ENDPLATE, MACH W/HUB	1.000 EA
SP5126	MDL 17L TERM PANEL 3 PH W/TABS & 3/4 THE	1.000 EA
34BA4003G01A	RESILIENT BASE, MODEL 34 NEMA 56 AUTOPHO	1.000 EA
HA3169A16	THRUBOLT #8-32 THDS X 9.937"LG TDR#1	4.000 EA
LB1171	LABEL CARTON 6X6 ON LINE BLANK ROLLS	1.000 EA
LB5040	INSTRUCTION TAG, AC & DC	1.000 EA
MG5017	VARNISH - PDG 2500	0.050 GA
NP1203A01	NP LABEL 1PH, DV, REV (FOR COMMERCIAL MO	1.000 EA
27PA1001	PACKAGING GROUP	1.000 EA
LD5000A102	LEAD ASSY, 16 GA, RED, #8, W/FLAG TERMS	1.000 EA

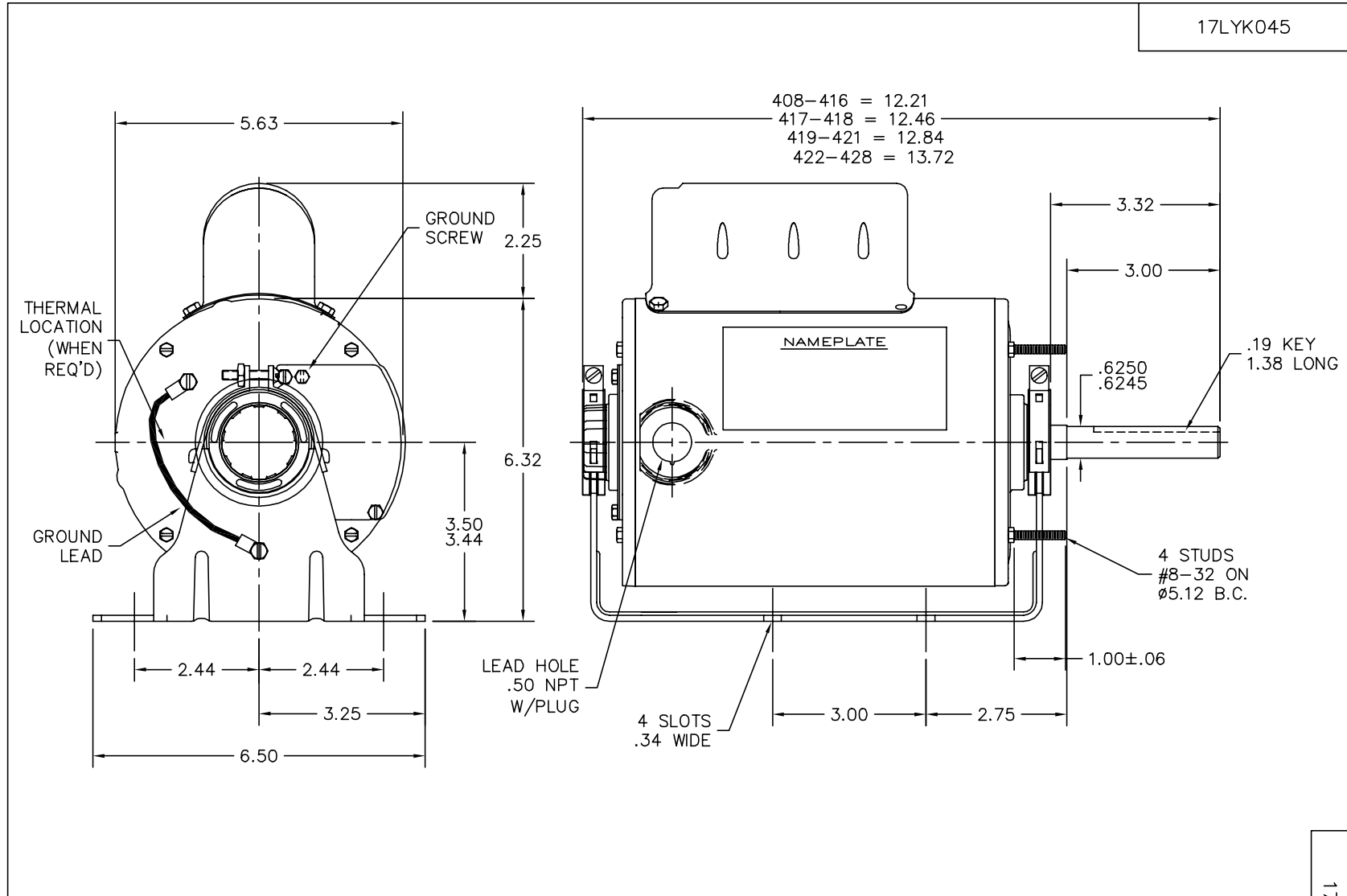
Performance Data at 230V, 60Hz, 0.5HP (Typical performance - Not guaranteed values)

General Characteristics			
Full Load Torque:	2.3 LB-FT	Start Configuration:	DOL
No-Load Current:	2.0 Amps	Break-Down Torque:	4.3 LB-FT
Line-line Res. @ 25°C.:	5.87 Ohms A Ph / 11.5 Ohms B Ph	Pull-Up Torque:	0.55 LB-FT
Temp. Rise @ Rated Load:	80 C	Locked-Rotor Torque:	0.6 LB-FT
Temp. Rise @ S.F. Load:		Starting Current:	11.0 Amps

Load Characteristics							
% of Rated Load	25	50	75	100	125	150	S.F.
Power Factor:	46.0	60.0	69.0	76.0	80.0	83.0	0.0
Efficiency:	44.4	60.6	66.3	68.0	67.3	63.7	0.0
Speed:	1183.0	1168.0	1152.0	1133.0	1111.0	1080.0	0.0
Line Amperes:	2.2	2.4	2.7	3.2	3.7	4.4	3.5

Performance Graph at 230V, 60Hz, 0.5HP Typical performance - Not guaranteed values





CUSTOMER IS RESPONSIBLE FOR DETERMINING THAT MOTOR PERFORMANCE IS SUITABLE IN THE APPLICATION.

REV. DESC: CHANGED TITLE BLOCK TO READ 56 PER J. MALINOWSKI		
REV. LTR: A	VERSION: 01	TDR: 000000398838
17LYK045	FILE: \AAA\00082\676	REVISED: 08:34:48 06/08/2006
	MTL: -	BY: ENTERDO

BALDOR ELECTRIC Co.

RESIL 17C NEMA 56 TEAO W/EXT T'BOLTS & "V" = 3.00

17LYK045

CD0804

