

BALDOR® • **RELIANCE**

Product Information Packet

CHM465A

.75HP, 1140RPM, 3PH, 60HZ, 56Z, 1728M, TEAO, F1

Copyright © All product information within this document is subject to Baldor Electric Company copyright © protection, unless otherwise noted.

Part Detail							
Revision:	W	Status:	PRD/A	Change #:		Proprietary:	No
Type:	AC	Prod. Type:	1728M	Elec. Spec:	17WGW076	CD Diagram:	
Enclosure:	TEAO	Mfg Plant:		Mech. Spec:	17K039	Layout:	
Frame:	56Z	Mounting:	F1	Poles:	06	Created Date:	
Base:	RS	Rotation:	R	Insulation:	B	Eff. Date:	06-25-2012
Leads:	12#18	Literature:		Elec. Diagram:		Replaced By:	

Nameplate NP1203A27							
CAT.NO.	CHM465A	ENCL	TEAO				
SPEC.	17K039W076G1	FRAME	56Z				
HP	.75						
VOLTS	208-230/460						
AMPS	3.6/1.8						
RPM	1140						
HZ	60	PH	3	CL	B		
SER.F.	1.15	DES	B	CODE	L		
FL EFF	72	PF					
RATING	40C AMB-CONT						
SF AMP		USABLE AT 208V					
SER.							
MANUAL	N	AUTO	Y	NONE	N		

Parts List		
Part Number	Description	Quantity
SA083554	SA 17K039W076G1	1.000 EA
RA076778	RA 17K039W076G1	1.000 EA
TPMYJ58KR	THERMAL 3PH 0.75 AUT 135C	1.000 EA
11XT0832G06	8-32 X 3/8 TY 23 TAPPING	1.000 EA
LD5000A52	LEAD ASSY W/INTERNAL STAR RING TERMINALS	1.000 EA
11XT1032A06	10-32 X 3/8 HX WSHR HD SLTD TYPE 23	2.000 EA
51XW0832A07	8-32 X .44, TAPTITE II, HEX WSHR SLTD SE	4.000 EA
RM1000A03SP	CUSHION RING, MDL 17-33-34	1.000 EA
HA6004A01A	CLAMP CUSHION RING ASSY	1.000 EA
34CB4501SP	TERMINAL BOX LID, STAMPED X (PLATED)	1.000 EA
HW5100A03SP	WAVY WASHER (W1543-017)	1.000 EA
17EP3100D01	PU ENDPLATE, MACH W/HUB ENCLOSED	1.000 EA
XY0832A02	8-32 HEX NUT	4.000 EA
RM1000A03SP	CUSHION RING, MDL 17-33-34	1.000 EA
HA6004A01A	CLAMP CUSHION RING ASSY	1.000 EA
34GS1005	GASKET, TERM PLATE LID	1.000 EA
51XW0832A07	8-32 X .44, TAPTITE II, HEX WSHR SLTD SE	2.000 EA
HW2501D13SP	KEY, 3/16 SQ X 1.375	1.000 EA
HA7000A04	KEY RETAINER 0.625 DIA SHAFTS	1.000 EA
17EP3200DT01	FR ENDPLATE, MACH W/HUB	1.000 EA
34BA4003G01A	RESILIENT BASE, MODEL 34 NEMA 56 AUTOPHO	1.000 EA
SP1042A01	TERM BOARD, MODEL 17 3 PHASE FOR .75" TH	1.000 EA
HA3169A16	THRUBOLT #8-32 THDS X 9.937"LG TDR#1	4.000 EA
LB1171	LABEL CARTON 6X6 ON LINE BLANK ROLLS	1.000 EA

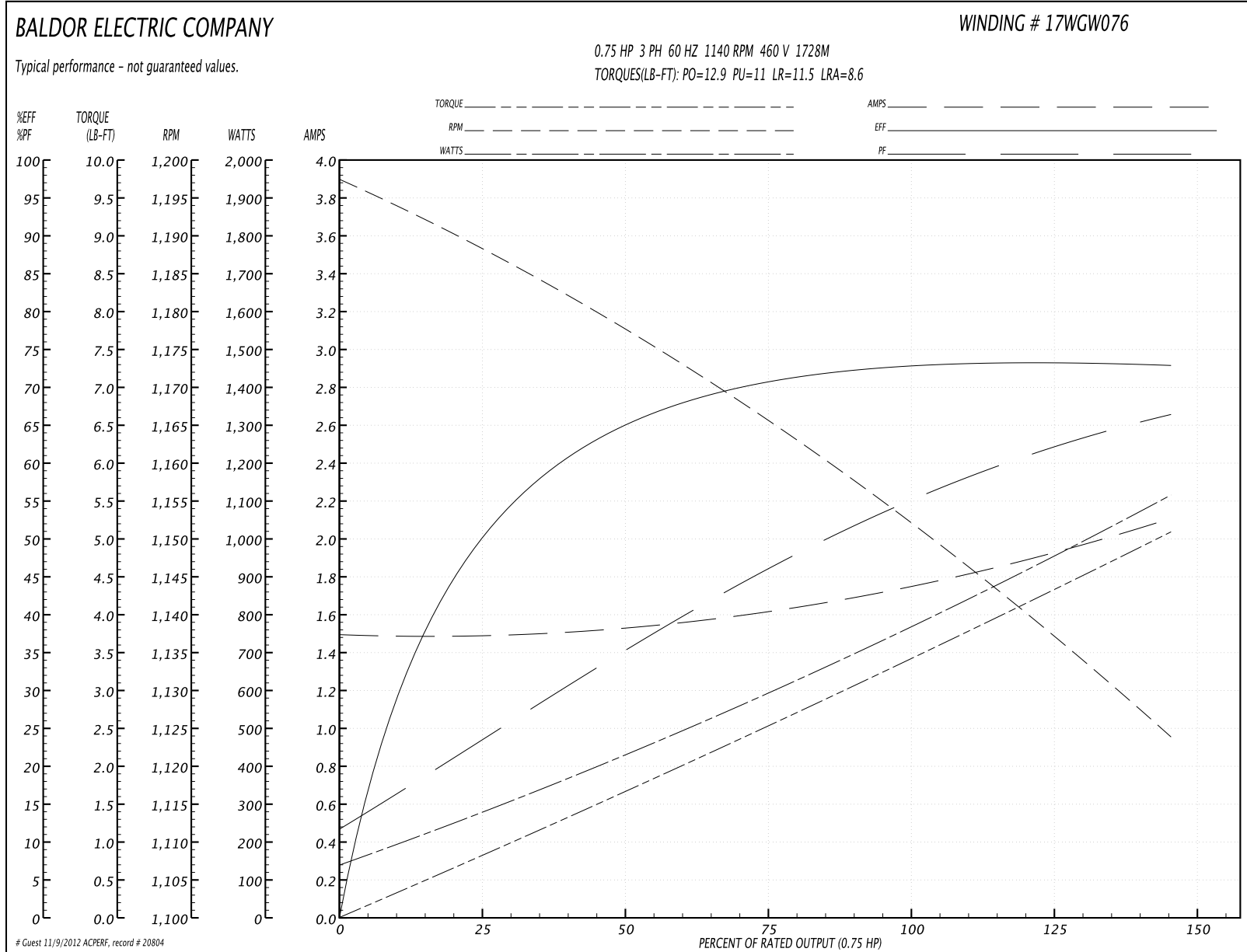
Parts List (continued)		
Part Number	Description	Quantity
LB5040	INSTRUCTION TAG, AC & DC	1.000 EA
MG5017	VARNISH - PDG 2500	0.050 GA
NP1203A27	NP LABEL, 3 PHASE, DV, W/THERMAL, 12 LDS	1.000 EA
36PA1000	PACK GROUP W/LB5001	1.000 EA
LD5313A01	LEAD ASSY, ML1410B18, 20", DBL STRIPPED	1.000 EA
LD5314A01	LEAD ASSY, ML1411B18, 20", DBL STRIPPED	1.000 EA
LD5315A01	LEAD ASSY, ML1412B18, 20", DBL STRIPPED	1.000 EA

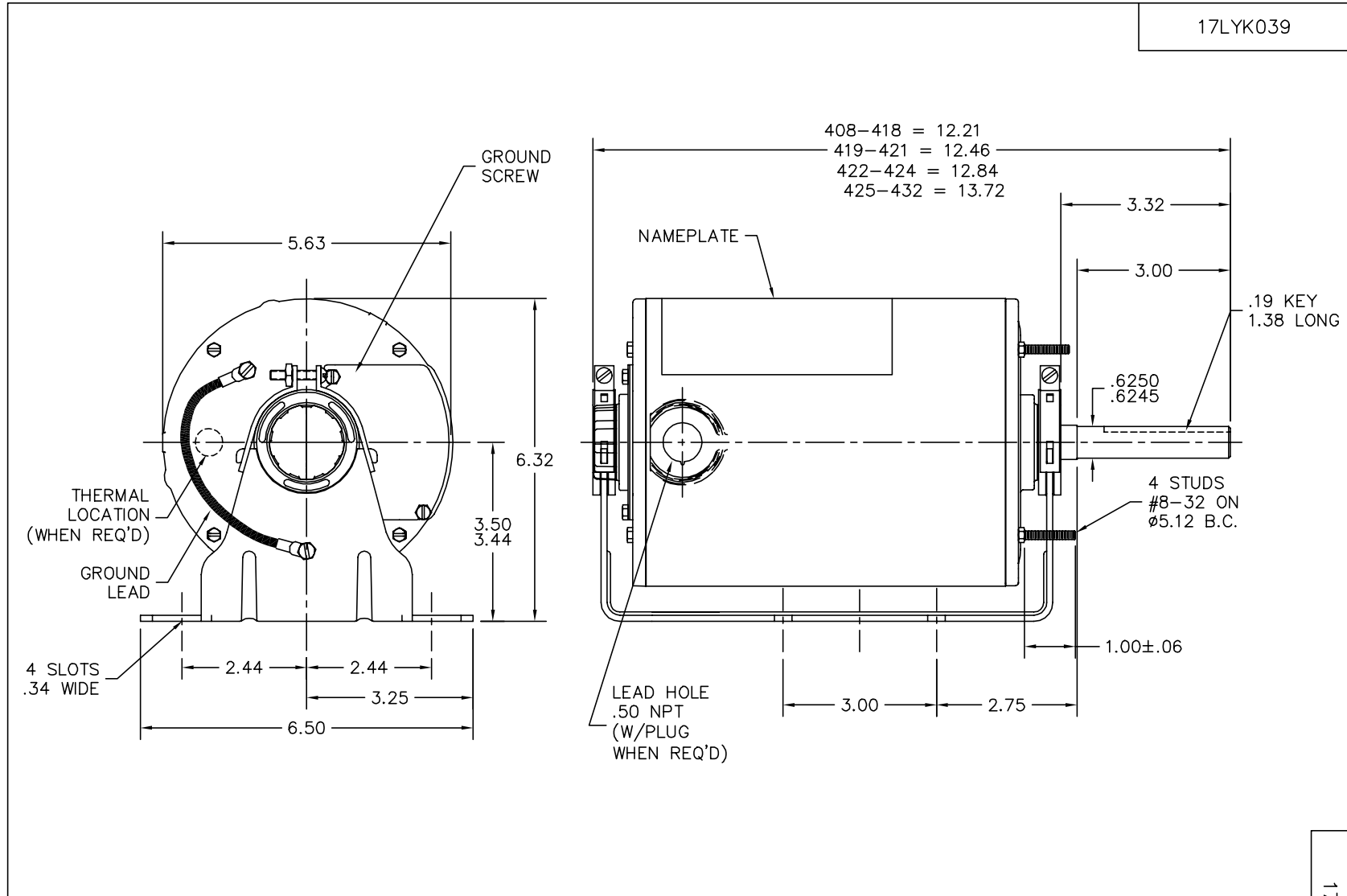
Performance Data at 460V, 60Hz, 0.75HP (Typical performance - Not guaranteed values)

General Characteristics			
Full Load Torque:	3.4 LB-FT	Start Configuration:	DOL
No-Load Current:	1.5 Amps	Break-Down Torque:	12.9 LB-FT
Line-line Res. @ 25°C.:	20.6 Ohms A Ph / 0.0 Ohms B Ph	Pull-Up Torque:	11.0 LB-FT
Temp. Rise @ Rated Load:	76 C	Locked-Rotor Torque:	11.5 LB-FT
Temp. Rise @ S.F. Load:		Starting Current:	8.6 Amps

Load Characteristics							
% of Rated Load	25	50	75	100	125	150	S.F.
Power Factor:	24.0	36.0	46.0	54.0	62.0	68.0	0.0
Efficiency:	51.8	65.4	70.7	72.7	73.0	73.1	0.0
Speed:	1188.0	1176.0	1165.0	1154.0	1139.0	1123.0	0.0
Line Amperes:	1.5	1.5	1.6	1.8	1.9	2.1	0.0

Performance Graph at 460V, 60Hz, 0.75HP Typical performance - Not guaranteed values





17LYK039

CUSTOMER IS RESPONSIBLE FOR DETERMINING THAT MOTOR PERFORMANCE IS SUITABLE IN THE APPLICATION.

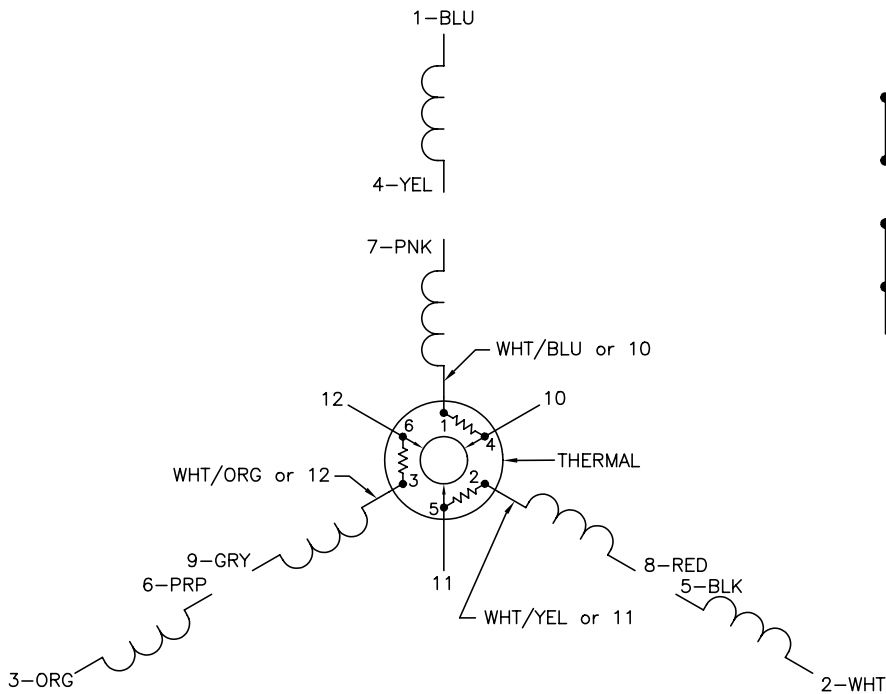
REV. DESC: REMOVED SHAFT GEOMETRY FROM LEFT VIEW OF MOTOR			
REV. LTR: A	BY: TWD	REVISED: 14:08:49 08/21/2003	TDR: 307530
650X171		FILE: AAA00082451	REF: 17LYK039
		MTL: -	

BALDOR ELECTRIC Co.

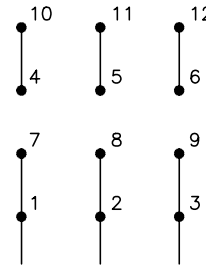
RESIL 17M NEMA 56Z TEAO W/EXT T'BOLTS & "V" = 3.00

17LYK039

CD0007

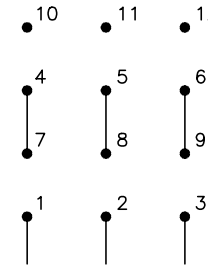


LOW VOLTAGE
(2Y)



LINE

HIGH VOLTAGE
(1Y)



LINE

NOTES:

1. INTERCHANGE ANY TWO LINE LEADS TO REVERSE ROTATION.
2. ACTUAL NUMBER OF INTERNAL PARALLEL CIRCUITS MAY VARY.
3. LEAD COLORS ARE OPTIONAL. LEADS MUST ALWAYS BE NUMBERED AS SHOWN.

REV. DESC: ADDED "CK" PLANT CODE			
REV. LTR: E	BY: EAH	REVISED: 05/06/99 17:1	TDR: 0181040
L00000		FILE: AAA00008370	MDL: -
		MTL: -	

BALDOR ELECTRIC Co.

3PH, DV, THERMAL, 12 LEADS

CD0007