

BALDOR® • *RELIANCE*

Product Information Packet

CL3711T

10HP,3450RPM,1PH,60HZ,215TC,3744LC,TEFC

Copyright © All product information within this document is subject to Baldor Electric Company copyright © protection, unless otherwise noted.

Part Detail							
Revision:	AD	Status:	PRD/A	Change #:		Proprietary:	No
Type:	AC	Prod. Type:	3744LC	Elec. Spec:	37WGW578	CD Diagram:	
Enclosure:	TEFC	Mfg Plant:		Mech. Spec:	37F395	Layout:	
Frame:	215TC	Mounting:	F1	Poles:	02	Created Date:	
Base:	RG	Rotation:	R	Insulation:	F	Eff. Date:	02-06-2012
Leads:	2#10 A PH,2#14 B PH	Literature:		Elec. Diagram:		Replaced By:	

Nameplate NP1256L

CAT.NO.	CL3711T						
SPEC.	37F395W578						
HP	10						
VOLTS	230						
AMP	40						
RPM	3450						
FRAME	215TC	HZ	60	PH	1		
SER.F.	1.00	CODE	H	DES	L	CLASS	F
NEMA-NOM-EFF	82	PF	98				
RATING	40C AMB-CONT						
CC	USABLE AT 208V						
DE	6307	ODE	6206				
ENCL	TEFC	SN					

Parts List		
Part Number	Description	Quantity
SA031452	SA 37F395W578	1.000 EA
RA027491	RA 37F395W578	1.000 EA
OC3030F11SP	CYL OIL CAP 30MFD/370V	2.000 EA
EC1216C06SP	ELEC CAP, 216-259 MFD, 250V, 2.06D X 4.	3.000 EA
37EP3101A01SP	FR ENDPLATE,TEFC, 37 L&M, W/GREASER	1.000 EA
HW4500A01	1641B(ALEMITE)400 UNIV, GREASE FITT	1.000 EA
13XT0832A07	8-32X7/16 TYP 23 PAN HD SLT DX	2.000 EA
37CB5001A21	ENCL, A01 BOX W/LID, GASKETS & 1.09 LEAD	1.000 EA
HW5100A06	W2420-025 WVY WSHR (WB)	1.000 EA
37EP3300A01	FACE MT ENDPLATE-ENCL-307 BRG-213TC-215T	1.000 EA
HW4500A01	1641B(ALEMITE)400 UNIV, GREASE FITT	1.000 EA
10XN2520A30	HEX HD CAP SCREW-STD THD-.25 X 20 THD PE	4.000 EA
HW1001A25	LOCKWASHER 1/4, ZINC PLT .493 OD, .255 I	4.000 EA
XY3118A12	5/16-18 HEX NUT DIRECTIONAL SERRATION	4.000 EA
37FN3002A01SP	EXFN, PLASTIC, 9.00 OD, 1.155 ID	1.000 EA
51XB1214A20	12-14X1.25 HXWSSLD SERTYB	1.000 EA
07FH4007A06	IEC FH W/GRS, NOT @6, 3 F/C HOL & NOT FO	1.000 EA
51XW1032A06	10-32 X .38, TAPTITE II, HEX WSHR SLTD S	3.000 EA
HW2501F21	KEY, 5/16 SQ X 2.375	1.000 EA
HA7000A02	KEY RETAINER RING, 1 1/8 DIA, 1 3/8 DIA	1.000 EA
LB1115	LABEL,LIFTING DEVICE	1.000 EA
85XU0407S04	4X1/4 U DRIVE PIN STAINLESS	2.000 EA
HW3200A01	3/8-16X3/4 I-BLT WELDED F/S	1.000 EA
MJ1000A75	GREASE, POLYREX EM EXXON	0.050 LB

Parts List (continued)		
Part Number	Description	Quantity
MG1000G27	PAINT- S9282E CHARCOAL GREY	0.028 GA
WD1000A15	3-520132-2 AMP FLAG (4M/RL NON-CANC/NON-	10.000 EA
SP5064A35	MODEL 37 TYPE L,LC STAT SWITCH LEAD ASSE	1.000 EA
NS2539	INSULATOR FOR 37 FRAMESWITCH (MH1011A10)	1.000 EA
HA3104A17	5/16-18X13.250 T-BLT/OHIO	4.000 EA
LB1119	WARNING LABEL	1.000 EA
LB1125C01	STD (STOCK) CARTON LABEL BALDOR WITH FLA	1.000 EA
LC0086	CONNECTION LABEL	1.000 EA
NP1256L	ALUM UL CSA CC	1.000 EA
37PA1052	PACKAGING GROUP, 150 LB MTR 2 X 4 RUNNER	1.000 EA

Performance Data at 230V, 60Hz, 10.0HP (Typical performance - Not guaranteed values)

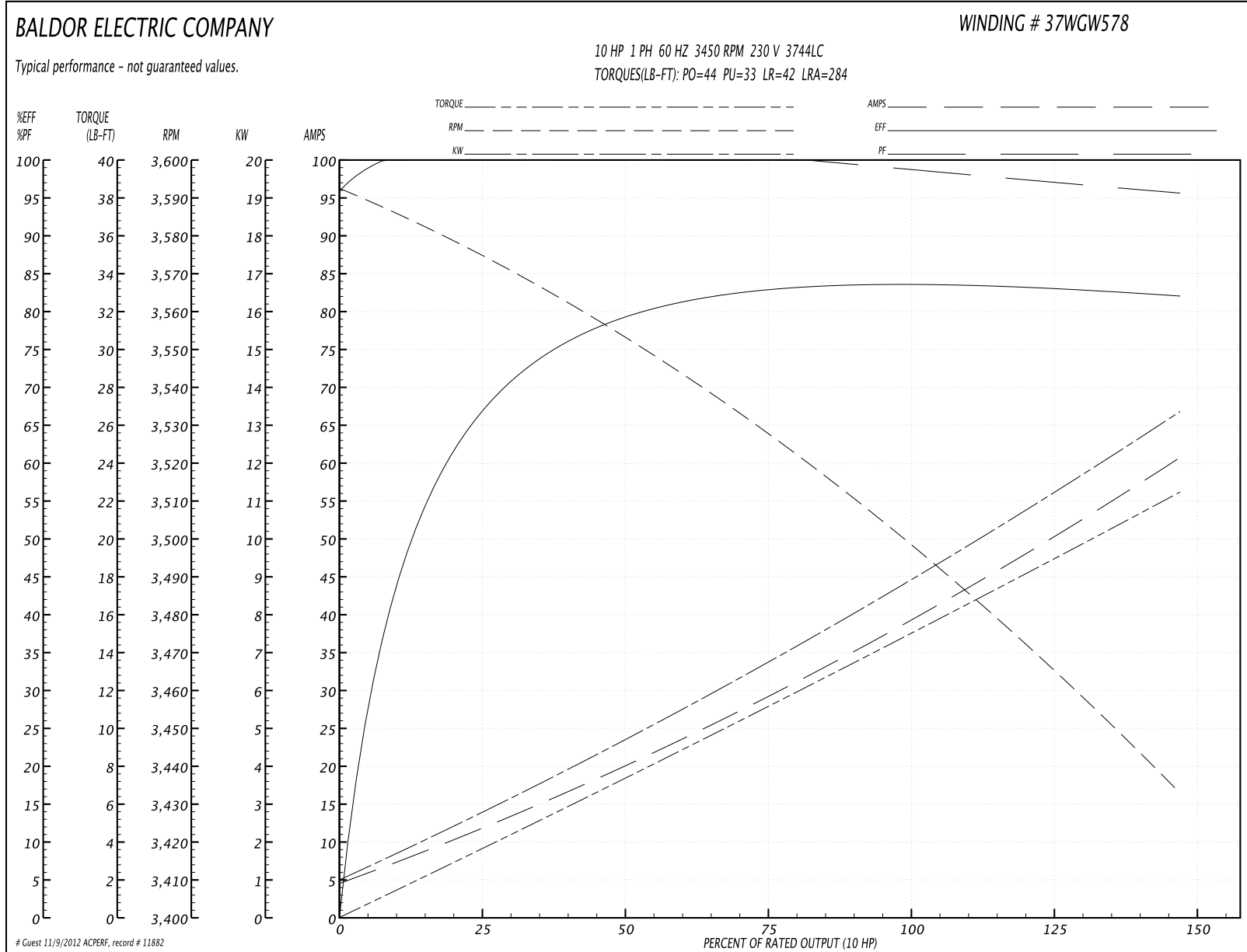
General Characteristics

Full Load Torque:	15.0 LB-FT	Start Configuration:	DOL
No-Load Current:	4.3 Amps	Break-Down Torque:	44.0 LB-FT
Line-line Res. @ 25°C.:	0.174 Ohms A Ph / 0.681 Ohms B Ph	Pull-Up Torque:	33.0 LB-FT
Temp. Rise @ Rated Load:	102 C	Locked-Rotor Torque:	42.0 LB-FT
Temp. Rise @ S.F. Load:		Starting Current:	284.0 Amps

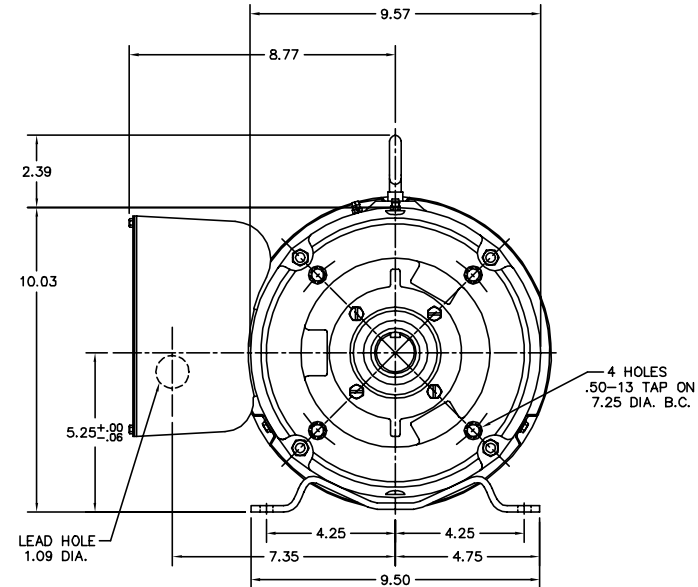
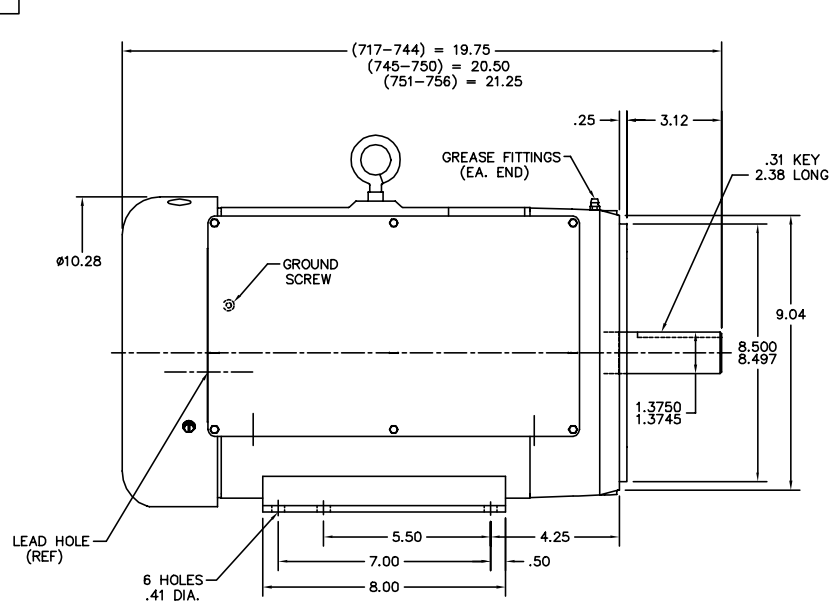
Load Characteristics

% of Rated Load	25	50	75	100	125	150	S.F.
Power Factor:	99.0	99.0	99.0	99.0	98.0	97.0	0.0
Efficiency:	66.6	78.9	82.9	83.9	83.4	81.8	0.0
Speed:	3573.0	3551.0	3527.0	3500.0	3469.0	3431.0	0.0
Line Amperes:	12.2	20.6	29.5	39.0	49.4	61.1	0.0

Performance Graph at 230V, 60Hz, 10.0HP Typical performance - Not guaranteed values



37LYF395



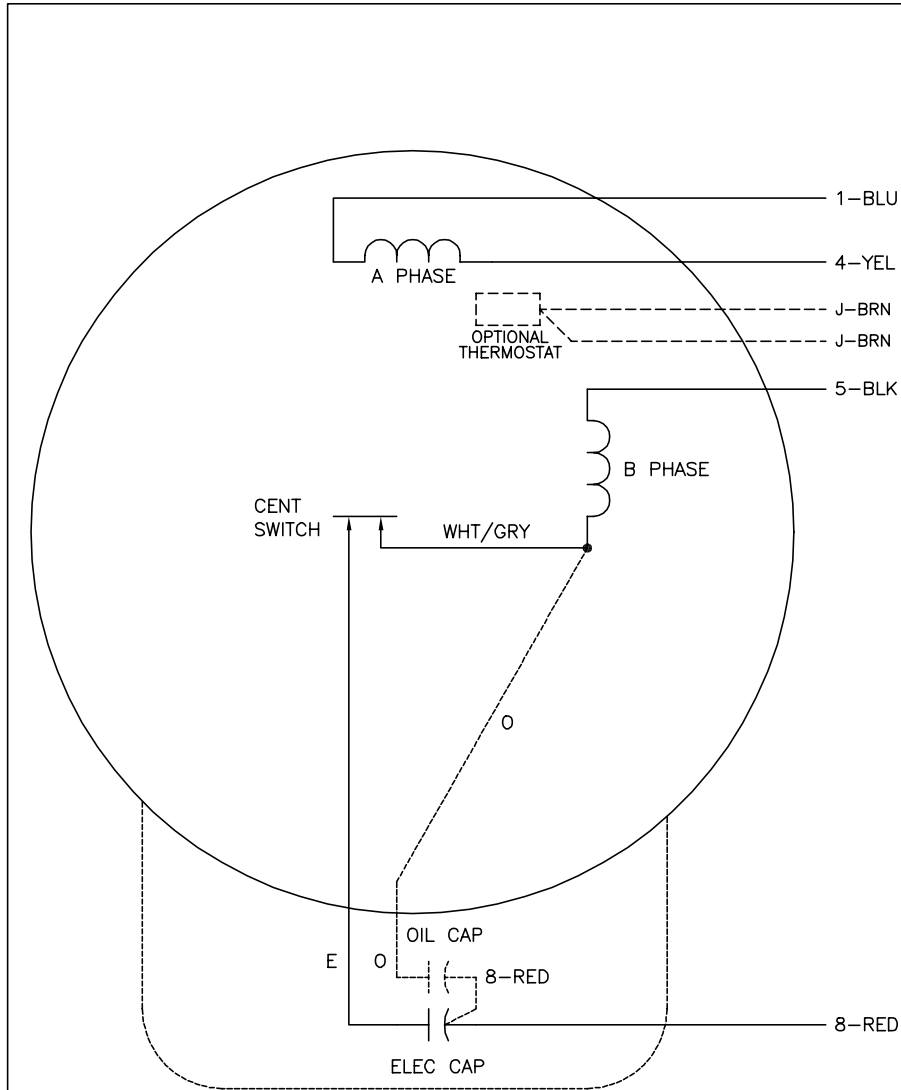
CUSTOMER IS RESPONSIBLE FOR DETERMINING THAT MOTOR PERFORMANCE IS SUITABLE IN THE APPLICATION.

REV. DESC:	37SB0761 WAS 37SB0012,37SH5771 WAS 5501 (SP5067)
REV. LTR:	E BY: DWG REVISED: 09:00:11 01/16/2004 TDR: 311215
FILE:	AAA00005052 REF: 37LYF395
MTL:	-

BALDOR ELECTRIC Co.
HOR 213-5TC TEFC 37LC W/6 CAPAC.BOX W/SPL SHOVE

37LYF395

CD0086



	LINE A	LINE B
STD	1,8	4,5
OPP	1,5	4,8

NOTES:

1. STANDARD ROTATION IS CCW FACING END OPPOSITE SHAFT EXTENSION.
2. OPTIONAL THERMOSTAT IS PROVIDED WHEN SPECIFIED.
3. MULTIPLE CAPACITORS ARE CONNECTED IN PARALLEL UNLESS OTHERWISE SPECIFIED.
4. OPTIONAL OIL CAPACITOR IS PROVIDED WHEN SPECIFIED.
5. CAPACITORS MAY BE SEPERATELY MOUNTED.
6. LEAD COLORS ARE OPTIONAL. LEADS MUST ALWAYS BE NUMBERED AS SHOWN.

REV. DESC: ADDED CK TO PLANT CODE			
REV. LTR: F	BY: JD	REVISED: 16:01:12 01/07/2002	TDR: 259409
9800D		FILE: AAA00026904	REF: CD0086
		MTL: -	

BALDOR ELECTRIC Co.

TYPE L OR LC, SV, REV, 4 LEADS, CAPS MAY BE SEP MTD

CD0086