

BALDOR® • ***RELIANCE***

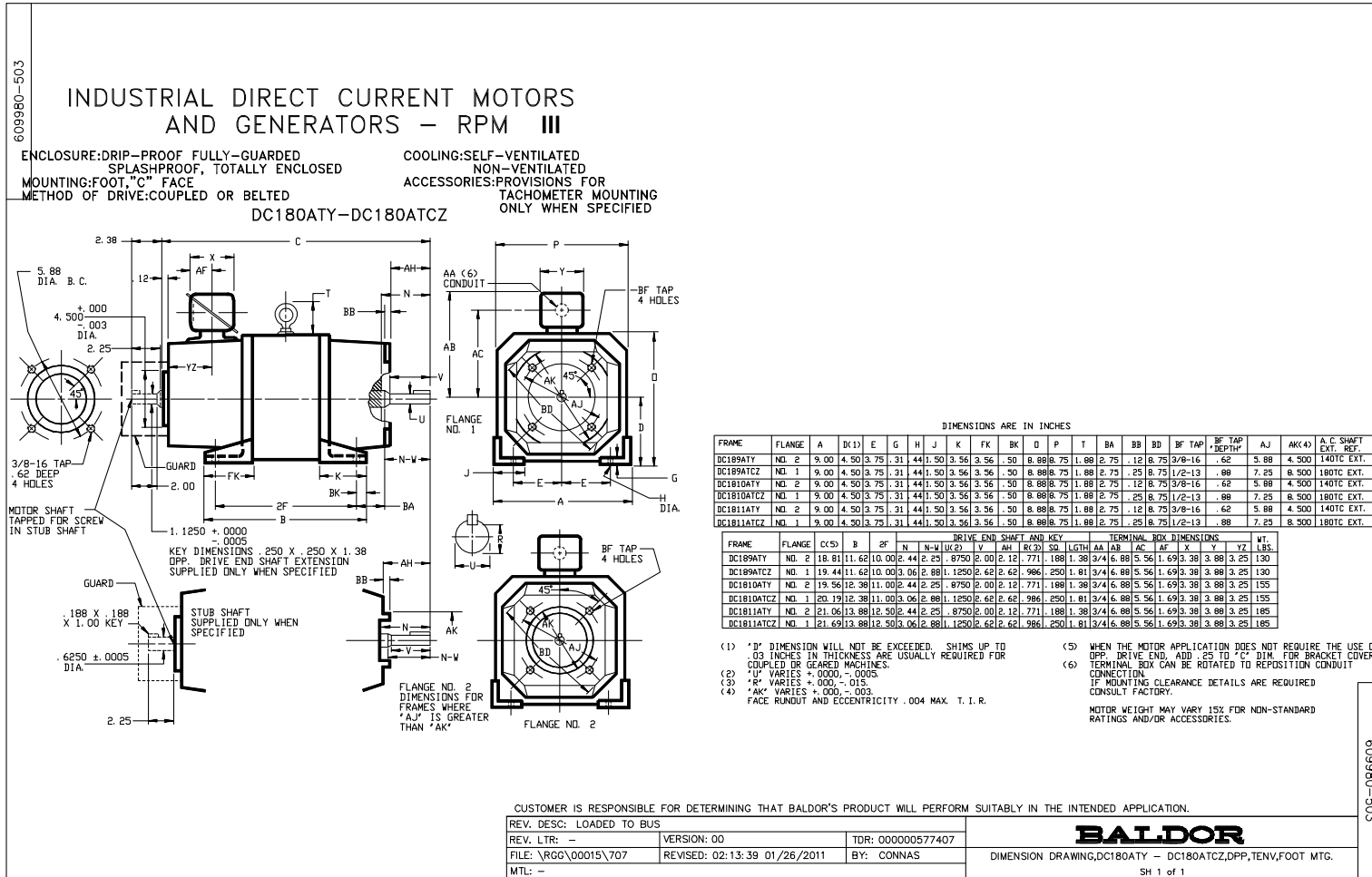
Product Information Packet

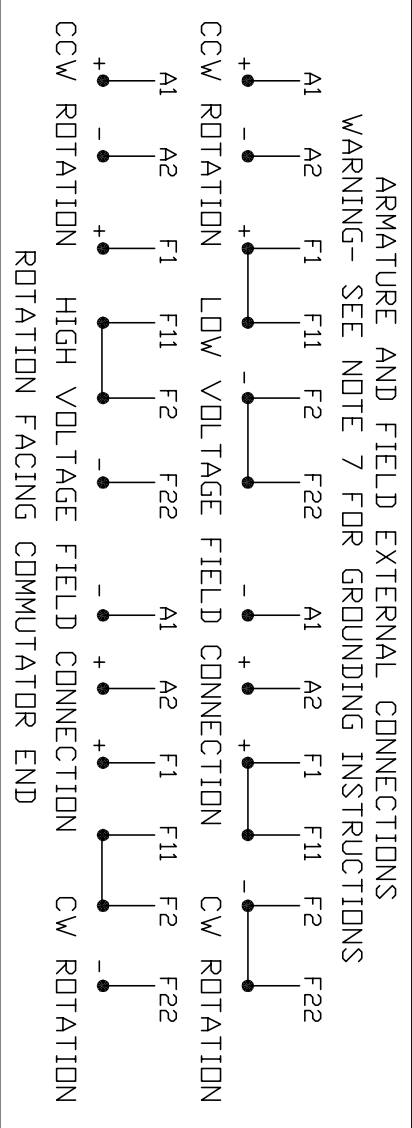
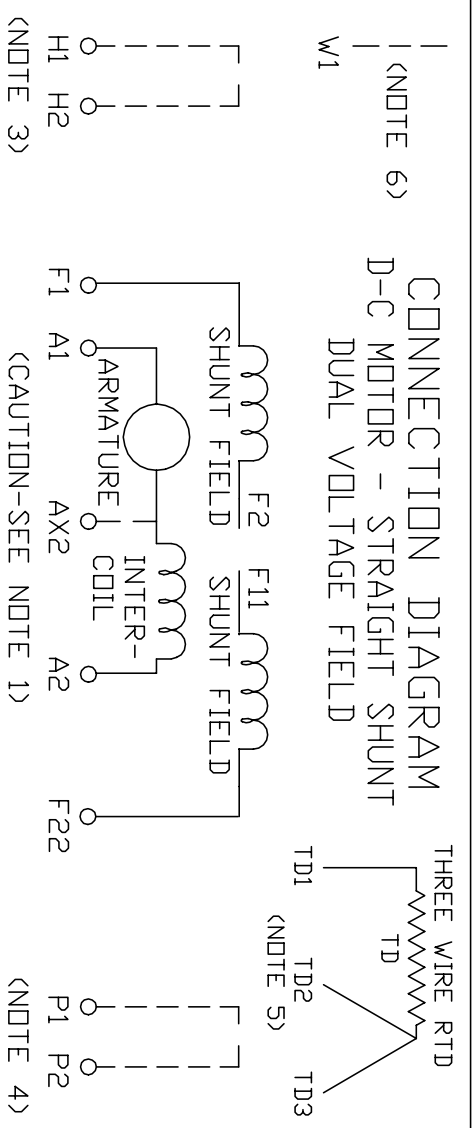
D1802R

2HP, 1750RPM, DC, 189ATY, TENV,

Copyright © All product information within this document is subject to Baldor Electric Company copyright © protection, unless otherwise noted.

Part Detail			
Type:	DC	Prod. Type:	TR
Power Code:	2/2-230-60-0	Weight:	166
Frame Group:	DC 0189ATY	Mounting Pos.:	F3
HP:	2	Enclosure:	TENV
RPM:	1750	Wound:	STR. SHUNT
Service Factor:	1.0	Arm V:	180
Arm A:	9.50	Field V:	200
Field A:	.72	Field A Hot:	.51
Insulation Class:	F	Ambient:	40
Duty:	CONT	DE Bearing:	30BC02JPP30A
ODE Bearing:	30BC02JPG30A	Brushes:	419904-50A
Brush Qty.:			





1. **CAUTION** — ARMATURE MAY HAVE MULTIPLE LEADS. CONNECT ALL LUGS WITH THE SAME MARKING TOGETHER.
2. OPTIONAL CONTROL SIGNAL LEAD IS MARKED AX2. ALWAYS TAKE INTERPOLE DROP BETWEEN A2 AND AX2. NOTE: NEMA DESIGNATION FOR AX2 IS LETTER C.
3. SPACE HEATERS, WHEN PROVIDED, WILL HAVE LEADS MARKED H1 AND H2, H3, H4, ETC.
4. THERMAL PROTECTOR, WHEN PROVIDED, WILL HAVE LEADS MARKED P1 AND P2, P3, P4, ETC.
5. WINDING WEAR SENSORS, WHEN PROVIDED, WILL HAVE LEAD MARKED W1.
6. BRUSH WEAR SENSOR, WHEN PROVIDED, WILL HAVE LEAD MARKED W1.
7. **WARNING** — MOTOR MUST BE GROUNDED TO PREVENT SERIOUS INJURIES TO PERSONNEL. GROUND THE MOTOR PER IEC, NATIONAL ELECTRICAL CODE AND ANY APPLICABLE LOCAL ELECTRICAL CODES. A TAPPED HOLE IS PROVIDED IN THE CONDUIT BOX, ON THE FOOT, FRAME BRACE OR OPPOSITE OPPOSITE DRIVE END BRACKET, ADJACENT TO THE TERMINAL BOX FOR FOR MOTOR GROUNDING. GROUND LEAD, WHEN PROVIDED, WILL BE GREEN.

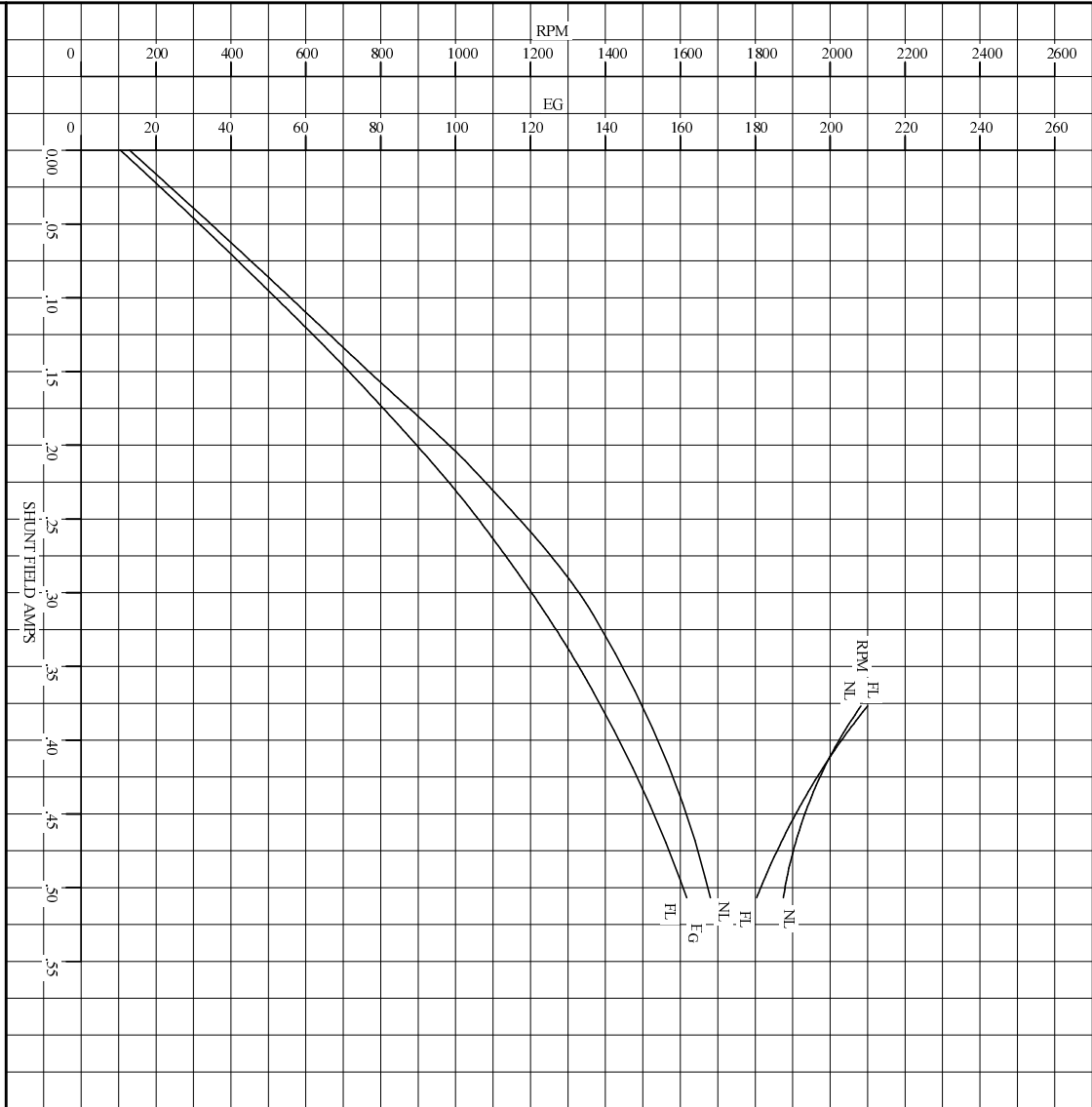
CUSTOMER _____ RELIANCE _____
ORDER NO. _____ S.D. NO. _____

DR. BY N.L. EVANS
CHK. BY N. JESCHKE
APP. BY E. J. HINER
DATE 5-5-69

CONNECTION DIAGRAM 406770-7
ORIGINAL AT RCC

C/R 244907, 290048, 354478, 354480

REF. S.O.	FRAME DC189AT	RATING 2.00HP	BASE SPEED 1750	WINDING TYPE STRAIGHT SHUNT
S.F.F. 1.0	ENCL. TENV	AMB°C/INSUL 40/F	DUTY CONT	POWER CODE/FORM FACTOR 2/2 230-60-0
COOLING AIR (CFM/IN H ₂ O) -/-	\bar{R} (sec) .591	\bar{R} (hot) .0799	T_m .0472	BASIC RPM 1950
				MAX CONT RPM 2100
				WINDER RPM -
				MAX. SAFE 4500
INDUCANCE PER COIL				
WINDING	VOLTS	RESISTANCE		
		25°C	HOT	25°C
ARM CIRCUIT	180	.853	1.23	9.50
SERIES S1-S2	-	-	-	-
SHUNT F1-F2	200	277	395	.507
				64.4
				H
				2500



REMARKS: TYPICAL DATA SPEED REGULATOR REQUIRED FOR STABILITY
CURVES VALID FOR NAMEPLATE SPEED RANGE ONLY

	DR. BY J. MARTIN	D-C APPLICATION DATA	SC4603A ISSUE DATE 1/30/91
	CK. BY J. MARTIN APP. BY T. EVON DATE 7-88		


REL. S.O.	FRAME	RATING	RPM	ARM. VOLTS	ARM. AMPS
	DC189AT	2.00HP	1750	180	9.50
WINDING TYPE		S.F.	ENCL.	AMB °C/INSUL	DUTY
STRAIGHT SHUNT		1.0	TENV	40/F	CONT
					200
POWER CODE	TYPE	WK ² (LB-FT ²)	HOT ARM.CIR.RES.	FLD. AMPS@25 °C	HOT FIELD RES
2/2 230-60-0	TR	.6247	1.22	.721	394

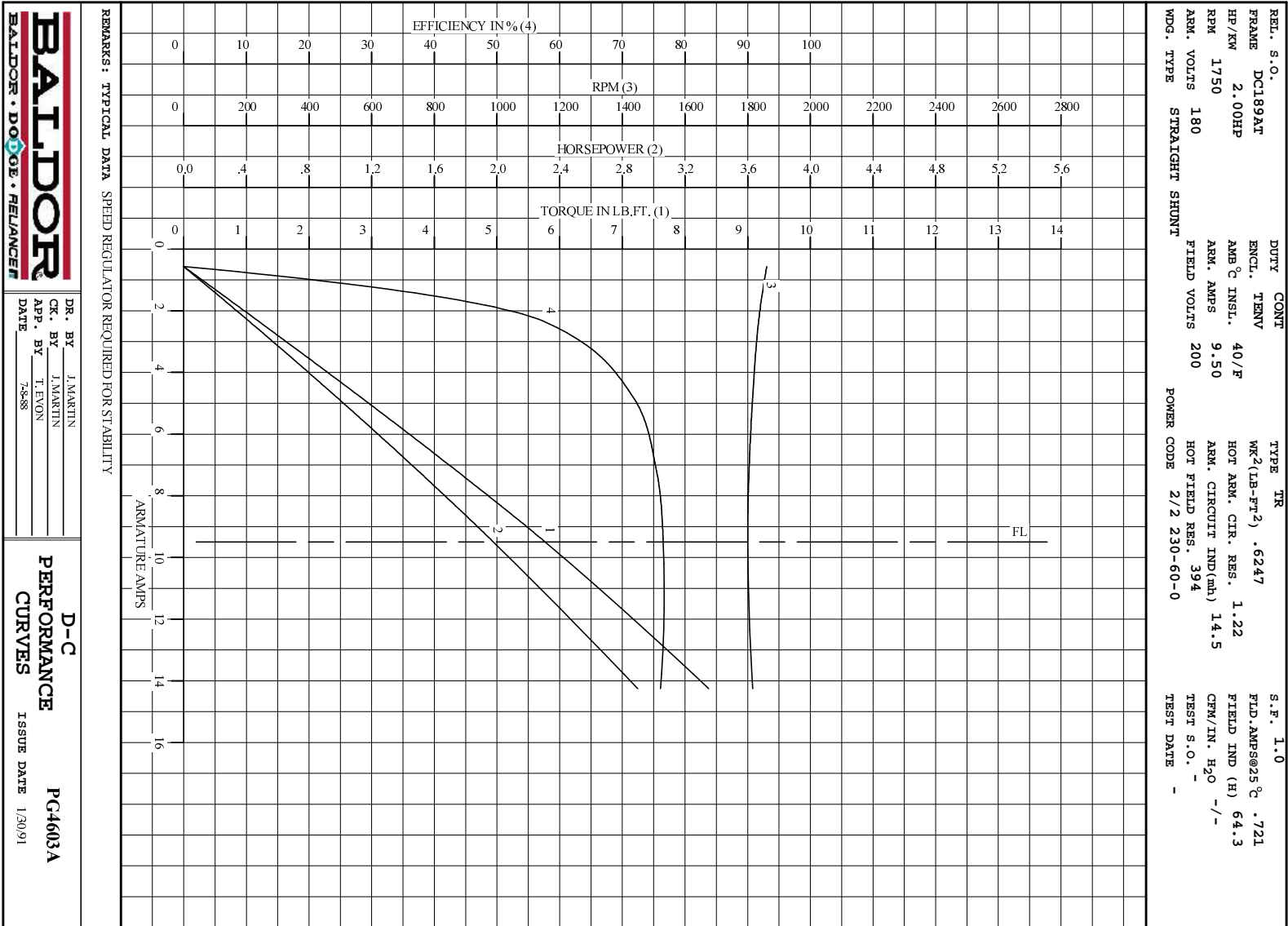
ARM. CIR. IND. (mh)	FIELD IND. (H)	COOLING AIR(CFM/IN H 20)	TURNS PER COIL SHUNT/SERIES	TEST DATE
14.5	64.3	-/-	2500/.00000	

LOAD PERFORMANCE					
LOAD	AMPERES	TORQUE IN LB.-FT.	OUTPUT IN HP	RPM	% EFFICIENCY
NO LOAD	.57	0	0	1861	0
1/4	2.4	1.22	.425	1835	57.8
2/4	4.8	2.79	.965	1816	71.6
3/4	7.1	4.31	1.48	1805	75.4
4/4	9.5	5.77	1.98	1800	76.5
O.L.	14	8.38	2.90	1816	76.1

RPM VS. FIELD AMPS			Eg VS. FIELD AMPS		
FIELD AMPS	RPM N.L.	RPM F.L.	Eg N.L. @ BASE SPEED	Eg F.L. @ BASE SPEED	
.506	1861	1799	167	161	
.474	1902	1859	164	156	
.441	1944	1926	161	151	
.409	2003	2005	156	145	
.376	2082	2100	150	138	

REMARKS: TYPICAL DATA
 MAXIMUM SAFE SPEED = 4500 RPM
 SPEED REGULATOR REQUIRED FOR STABILITY

	DR. BY J. MARTIN	D-C MOTOR PERFORMANCE DATA DG4603A ISSUE DATE 1/30/91
	CK. BY T. EVON APP. BY 7-8-88 DATE	



DR. BY J.MARTIN
 CK. BY J.MARTIN
 APP. BY T. EVON
 DATE 7-88

D-C
PERFORMANCE
CURVES ISSUE DATE 1/30/91
PC4603A