

BALDOR® • *RELIANCE*

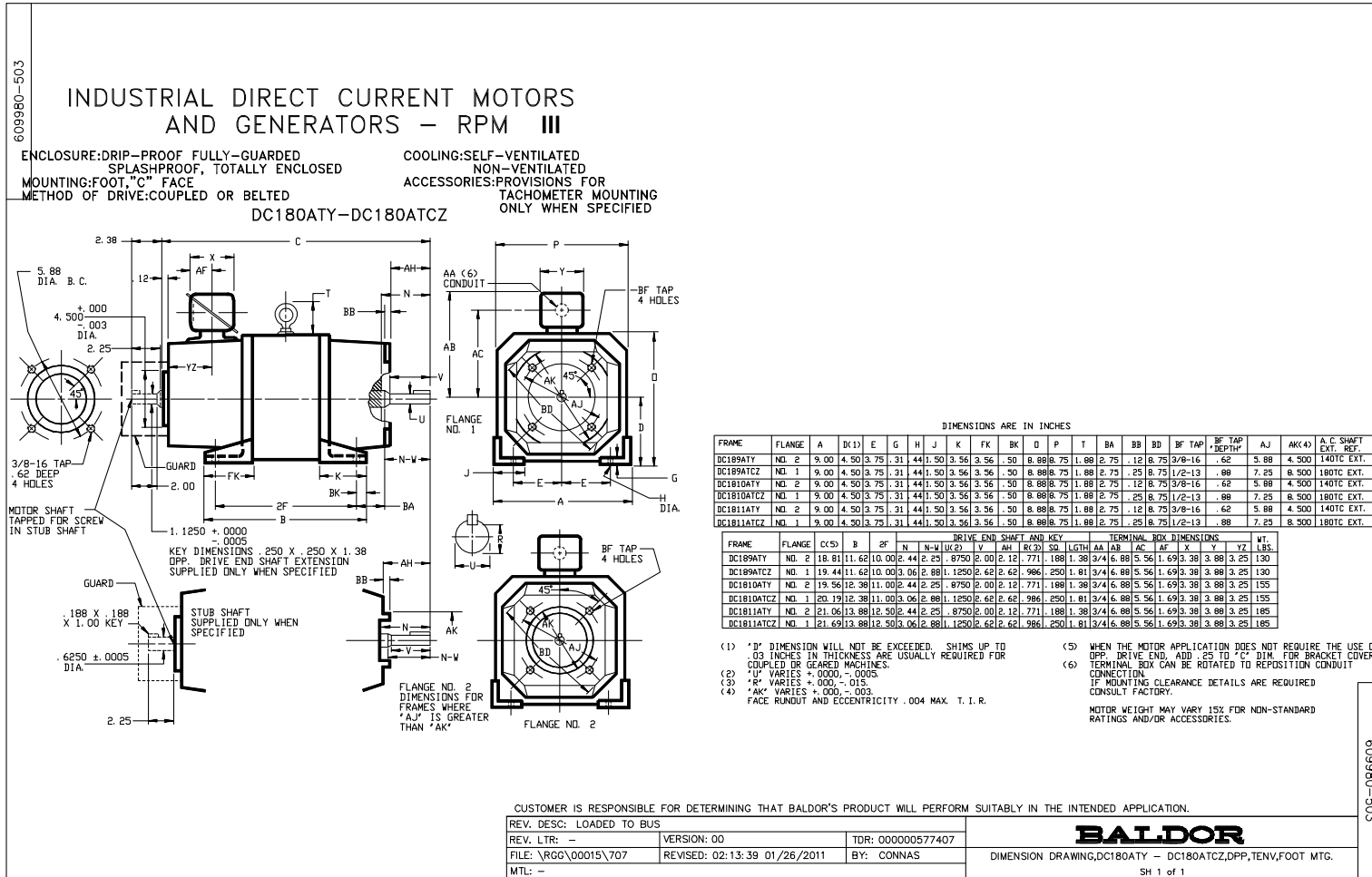
Product Information Packet

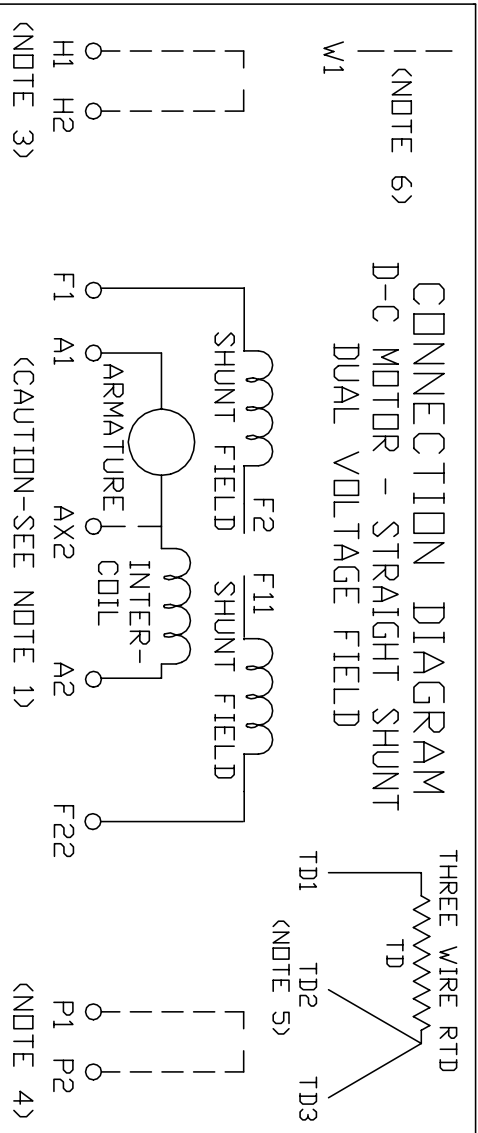
D1803R

3HP, 1750RPM, DC, 189ATY, DPG,

Copyright © All product information within this document is subject to Baldor Electric Company copyright © protection, unless otherwise noted.

Part Detail			
Type:	DC	Prod. Type:	TR
Power Code:	2/2-230-60-0	Weight:	165
Frame Group:	DC 0189ATY	Mounting Pos.:	F3
HP:	3	Enclosure:	DPG
RPM:	1750	Wound:	STR. SHUNT
Service Factor:	1.0	Arm V:	180
Arm A:	14.80	Field V:	200
Field A:	.95	Field A Hot:	.73
Insulation Class:	F	Ambient:	40
Duty:	CONT	DE Bearing:	30BC02JPP30A
ODE Bearing:	30BC02JPG30A	Brushes:	419904-50A
Brush Qty.:			





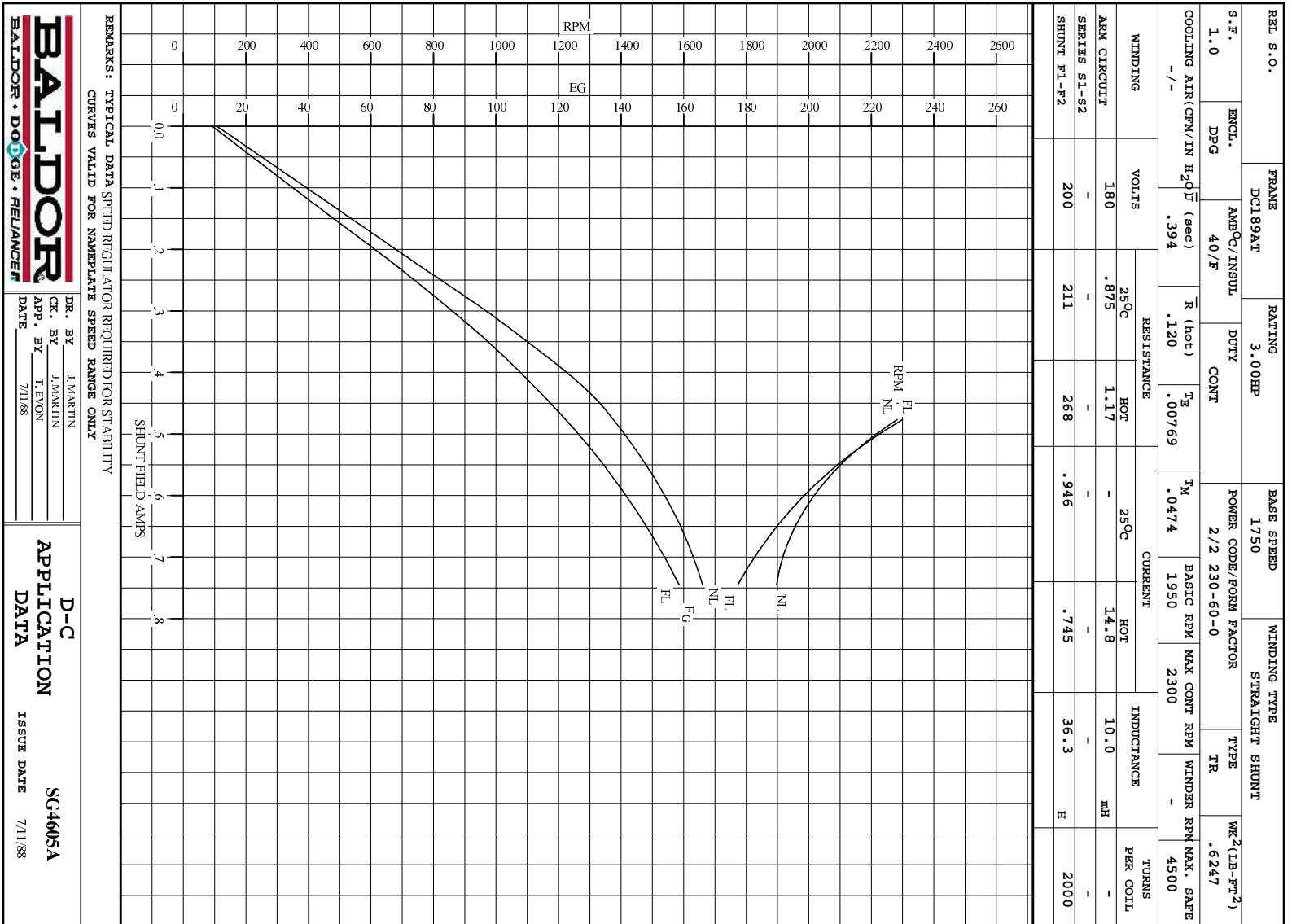
1. **CAUTION** — ARMATURE MAY HAVE MULTIPLE LEADS. CONNECT ALL LUGS WITH THE SAME MARKING TOGETHER.
2. OPTIONAL CONTROL SIGNAL LEAD IS MARKED AX2. ALWAYS TAKE INTERPOLE DROP BETWEEN A2 AND AX2. NOTE: NEMA DESIGNATION FOR AX2 IS LETTER C.
3. SPACE HEATERS, WHEN PROVIDED, WILL HAVE LEADS MARKED H1 AND H2, H3, H4, ETC.
4. THERMAL PROTECTOR, WHEN PROVIDED, WILL HAVE LEADS MARKED P1 AND P2, P3, P4, ETC.
5. WINDING RTD'S, WHEN PROVIDED, WILL HAVE LEAD MARKED W1.
6. BRUSH WEAR SENSOR, WHEN PROVIDED, WILL HAVE LEAD MARKED W1.
7. **WARNING** — MOTOR MUST BE GROUNDED TO PREVENT SERIOUS INJURIES TO PERSONNEL. GROUND THE MOTOR PER IEC, NATIONAL ELECTRICAL CODE AND ANY APPLICABLE LOCAL ELECTRICAL CODES. A TAPPED HOLE IS PROVIDED IN THE CONDUIT BOX, ON THE FOOT. FRAME BRACE OR OPPOSITE OPPOSITE DRIVE END BRACKET, ADJACENT TO THE TERMINAL BOX FOR FOR MOTOR GROUNDING. GROUND LEAD, WHEN PROVIDED, WILL BE GREEN.

CUSTOMER _____ RELIANCE _____
ORDER NO. _____ S.O. NO. _____

DR. BY N.L. EVANS
CHK. BY N. JESCHKE
APP. BY E. J. HINER
DATE 5-5-69

CONNECTION DIAGRAM 406770-7
ORIGINAL AT RCC

C/R 244907, 290048, 354478, 354480




REL. S.O.	FRAME	RATING	RPM	ARM. VOLTS	ARM. AMPS
	DC189AT	3.00HP	1750	180	14.8
WINDING TYPE		S.F.	ENCL.	AMB °C/INSUL	DUTY
STRAIGHT SHUNT		1.0	DRG	40/F	CONT
					200
POWER CODE	TYPE	WK 2 (LB-PT 2)	HOT ARM. CIR. RES.	FLD. AMPS@25 °C	HOT FIELD RES
2/2 230-60-0	TR	.6247	1.17	.946	268

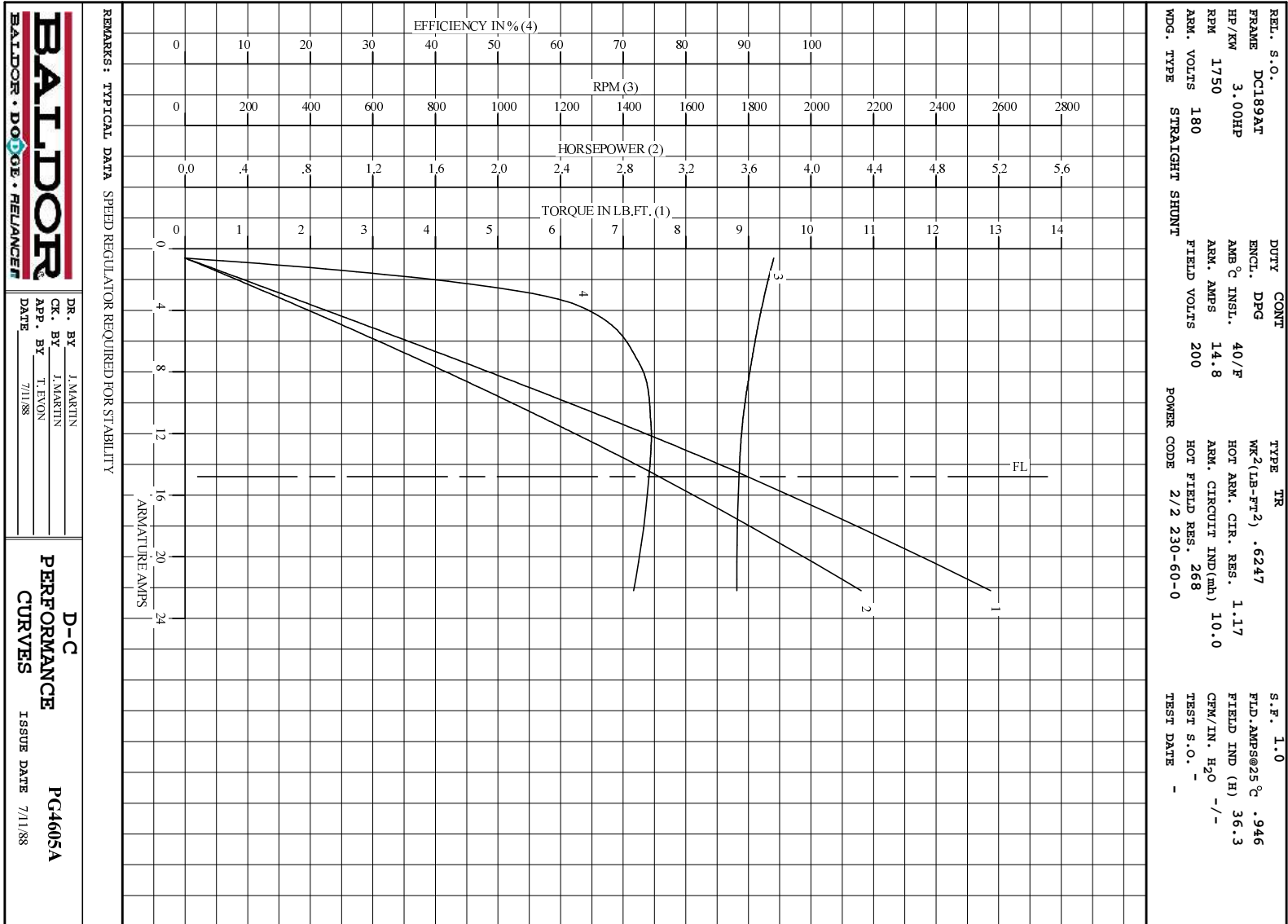
ARM. CIR. IND. (mh)	FIELD IND. (H)	COOLING AIR (CFM/IN H 20)	TURNS PER COIL SHUNT/SERIES	TEST DATE
10.0	36.3	-/-	2000/.00000	

LOAD PERFORMANCE					
LOAD	AMPERES	TORQUE IN LB.-FT.	OUTPUT IN HP	RPM	% EFFICIENCY
NO LOAD	.60	0	0	1881	0
1/4	3.7	2.06	.722	1844	62.9
2/4	7.4	4.47	1.54	1810	72.5
3/4	11	6.81	2.31	1783	74.4
4/4	15	8.99	3.03	1770	74.1
O.L.	22	12.9	4.32	1763	71.7

RPM VS. FIELD AMPS			Eg VS. FIELD AMPS	
FIELD AMPS	RPM N.L.	RPM F.L.	Eg N.L. @ BASE SPEED	Eg F.L. @ BASE SPEED
.745	1881	1770	166	158
.678	1932	1856	162	151
.610	2002	1965	157	143
.543	2114	2107	148	133
.476	2282	2300	138	122

REMARKS: TYPICAL DATA
 MAXIMUM SAFE SPEED = 4500 RPM
 SPEED REGULATOR REQUIRED FOR STABILITY

	DR. BY J. MARTIN	D-C MOTOR PERFORMANCE DATA DG4605A ISSUE DATE 7/11/88
	CK. BY T. EVON APP. BY T. EVON DATE 7/11/88	



DR. BY J.MARTIN
 CK. BY J.MARTIN
 APP. BY T. EYON
 DATE 7/11/88

D-C
PERFORMANCE
CURVES ISSUE DATE 7/11/88
PC4605A