

BALDOR® • **RELIANCE**

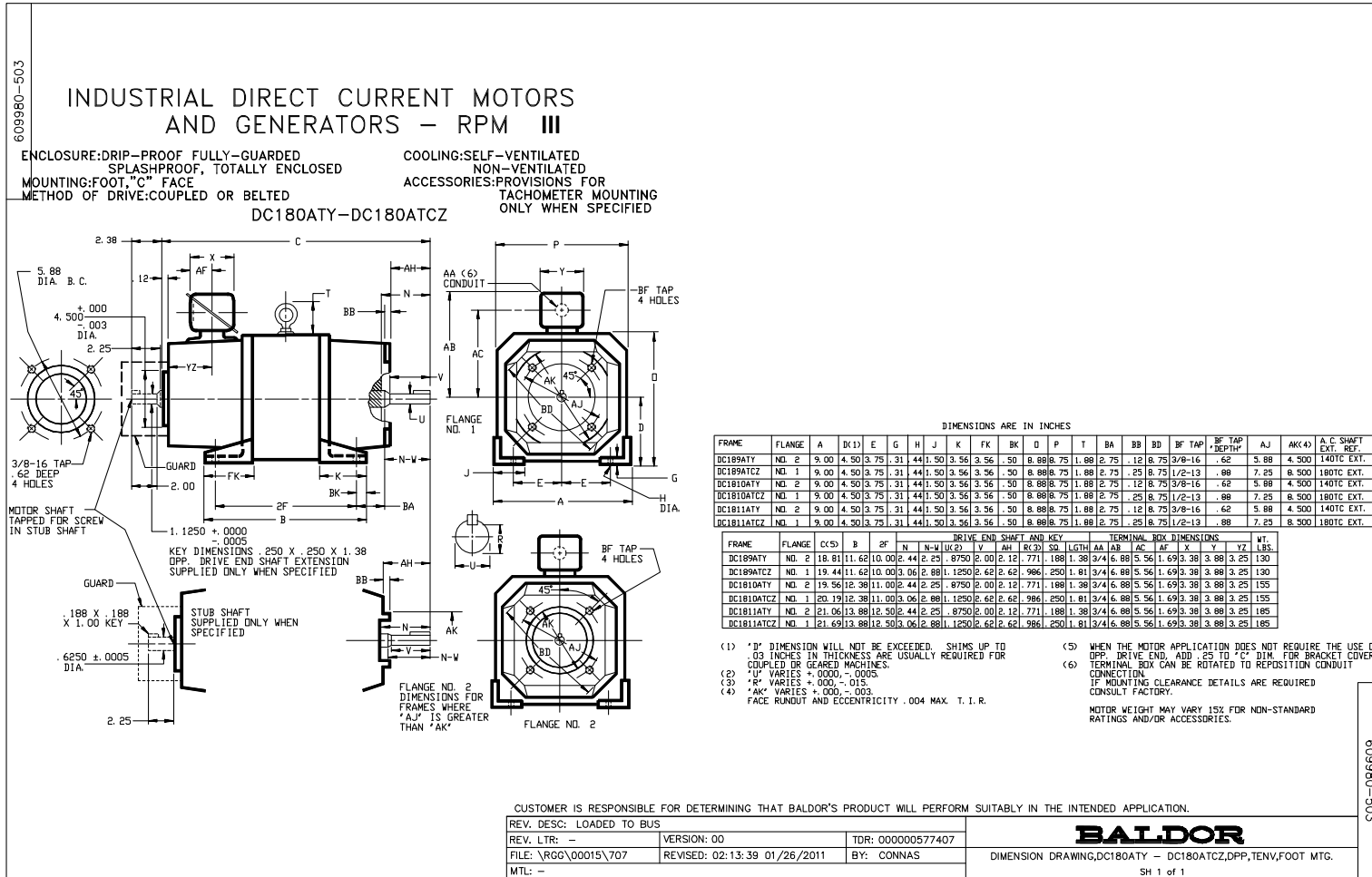
Product Information Packet

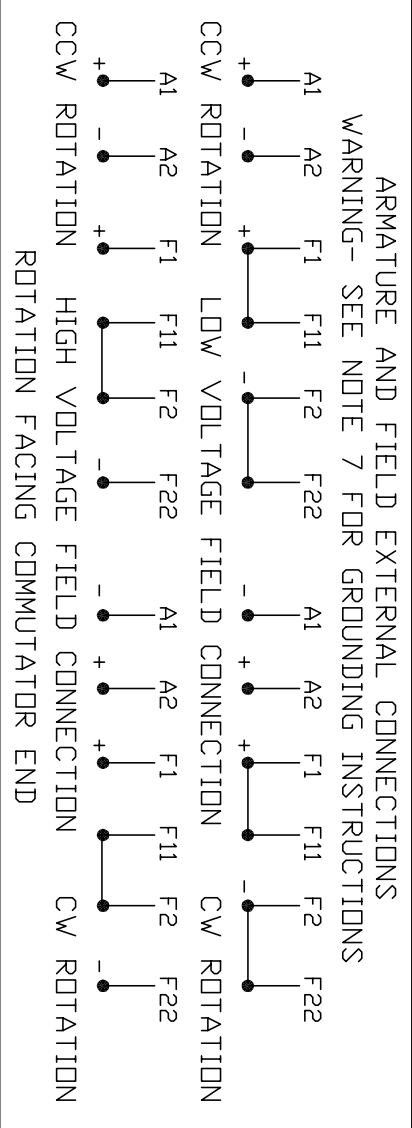
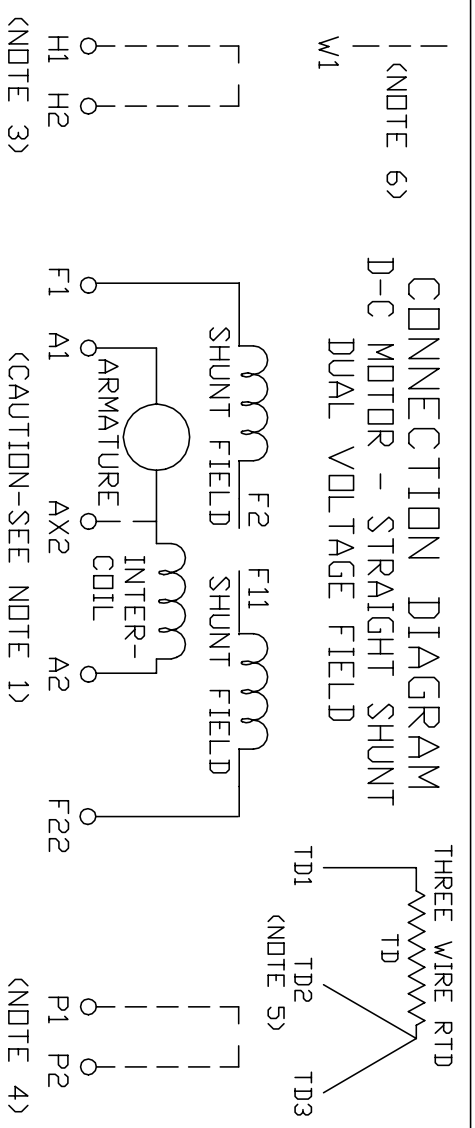
D1815R

1.50HP, 1750RPM, DC, 189ATY, TENV,

Copyright © All product information within this document is subject to Baldor Electric Company copyright © protection, unless otherwise noted.

Part Detail			
Type:	DC	Prod. Type:	TR
Power Code:	2/2-230-60-0	Weight:	169
Frame Group:	DC 0189ATY	Mounting Pos.:	F3
HP:	1.5	Enclosure:	TENV
RPM:	1750	Wound:	STR. SHUNT
Service Factor:	1.0	Arm V:	180
Arm A:	7.20	Field V:	200
Field A:	.72	Field A Hot:	.55
Insulation Class:	F	Ambient:	40
Duty:	CONT	DE Bearing:	30BC02JPP30A
ODE Bearing:	30BC02JPG30A	Brushes:	419904-50A
Brush Qty.:			





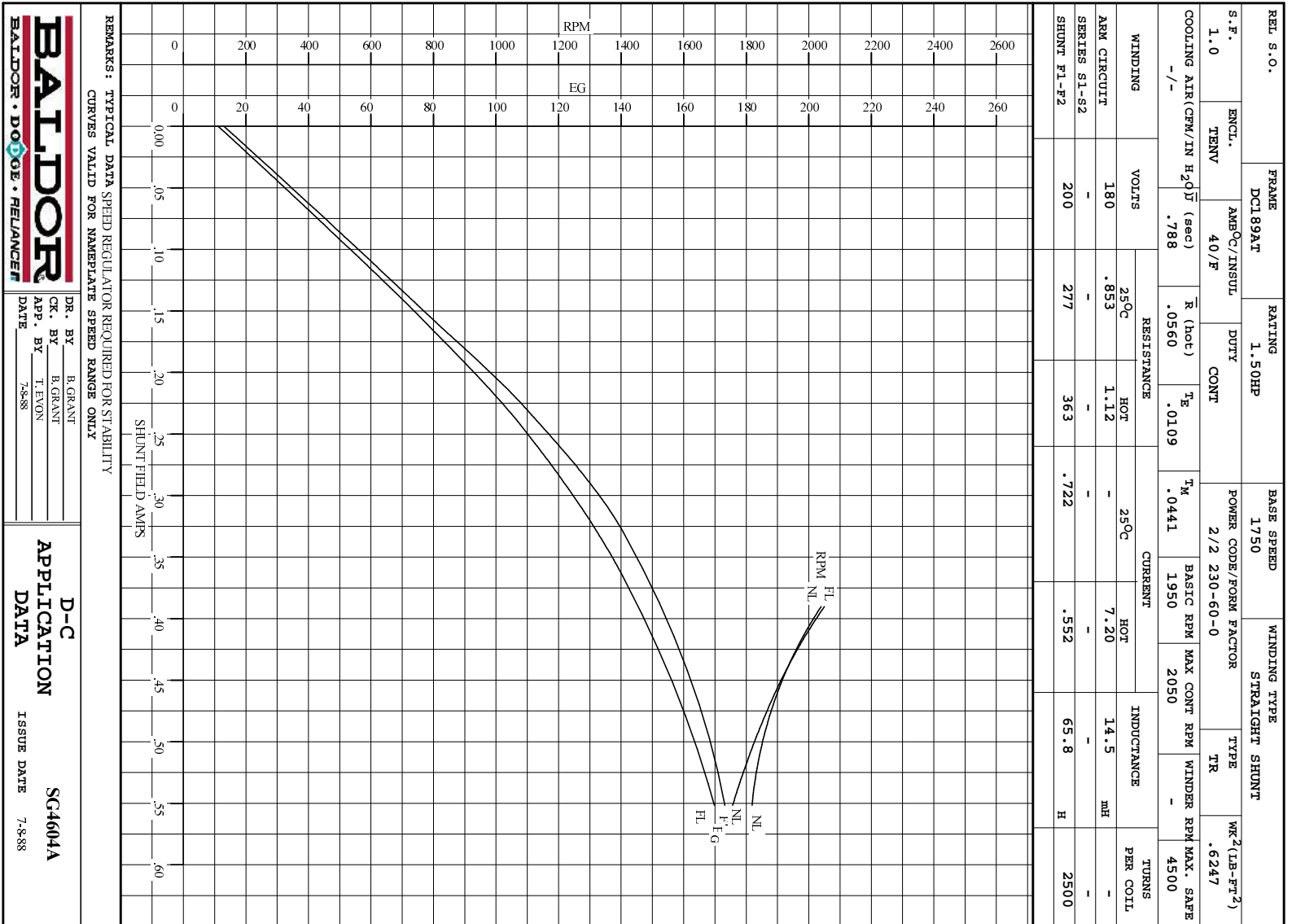
1. **CAUTION** — ARMATURE MAY HAVE MULTIPLE LEADS. CONNECT ALL LUGS WITH THE SAME MARKING TOGETHER.
2. OPTIONAL CONTROL SIGNAL LEAD IS MARKED AX2. ALWAYS TAKE INTERPOLE DROP BETWEEN A2 AND AX2. NOTE: NEMA DESIGNATION FOR AX2 IS LETTER C.
3. SPACE HEATERS, WHEN PROVIDED, WILL HAVE LEADS MARKED H1 AND H2, H3, H4, ETC.
4. THERMAL PROTECTOR, WHEN PROVIDED, WILL HAVE LEADS MARKED P1 AND P2, P3, P4, ETC.
5. WINDING WEAR SENSORS, WHEN PROVIDED, WILL HAVE LEAD MARKED W1.
6. BRUSH WEAR SENSOR, WHEN PROVIDED, WILL HAVE LEAD MARKED W1.
7. **WARNING** — MOTOR MUST BE GROUNDED TO PREVENT SERIOUS INJURIES TO PERSONNEL. GROUND THE MOTOR PER IEC, NATIONAL ELECTRICAL CODE AND ANY APPLICABLE LOCAL ELECTRICAL CODES. A TAPPED HOLE IS PROVIDED IN THE CONDUIT BOX, ON THE FOOT, FRAME BRACE OR OPPOSITE OPPOSITE DRIVE END BRACKET, ADJACENT TO THE TERMINAL BOX FOR MOTOR GROUNDING. GROUND LEAD, WHEN PROVIDED, WILL BE GREEN.

CUSTOMER _____ RELIANCE _____
ORDER NO. _____ S.D. NO. _____

APPROVED BY: N.L. EVANS
N. JESCHKE
E. J. HINER
DATE: 5-5-69

CONNECTION DIAGRAM 406770-7
ORIGINAL AT RCC

C/R 244907, 290048, 354478, 354480




REL. S.O.	FRAME	RATING	RPM	ARM. VOLTS	ARM. AMPS
	DC189AT	1.50HP	1750	180	7.20
WINDING TYPE					
	S.F.	ENCL.	AMB °C/INSUL	DUTY	FIELD VOLTS
STRAIGHT SHUNT	1.0	TENV	40/F	CONT	200
POWER CODE					
	TYPE	WK 2 (LB-PT 2)	HOT ARM. CIR. RES.	FLD. AMPS@25 °C	HOT FIELD RES
2/2 230-60-0	TR	.6247	1.11	.721	362

ARM. CIR. IND. (mh)	FIELD IND. (H)	COOLING AIR (CFM/IN H 20)	TURNS PER COIL SHUNT/SERIES	TEST DATE
14.5	65.8	-/-	2500/.00000	

LOAD PERFORMANCE					
LOAD	AMPERES	TORQUE IN LB.-FT.	OUTPUT IN HP	RPM	% EFFICIENCY
NO LOAD	.56	0	0	1807	0
1/4	1.8	.861	.294	1792	49.0
2/4	3.6	2.10	.710	1777	66.9
3/4	5.4	3.31	1.11	1764	73.0
4/4	7.2	4.50	1.50	1756	75.6
O.L.	11	6.75	2.25	1751	77.1

RPM VS. FIELD AMPS			Eg VS. FIELD AMPS		
FIELD AMPS	RPM N.L.	RPM F.L.	Eg N.L. @ BASE SPEED	Eg F.L. @ BASE SPEED	
.551	1806	1756	173	169	
.511	1842	1809	169	164	
.470	1885	1873	165	159	
.430	1949	1951	160	152	
.390	2039	2050	153	145	

REMARKS: TYPICAL DATA
 MAXIMUM SAFE SPEED = 4500 RPM
 SPEED REGULATOR REQUIRED FOR STABILITY

	DR. BY B. GRANT	D-C MOTOR PERFORMANCE DATA DG4604A ISSUE DATE 7-8-88
	CK. BY T. EVON APP. BY T. EVON DATE 7-8-88	

