

BALDOR® • RELIANCE

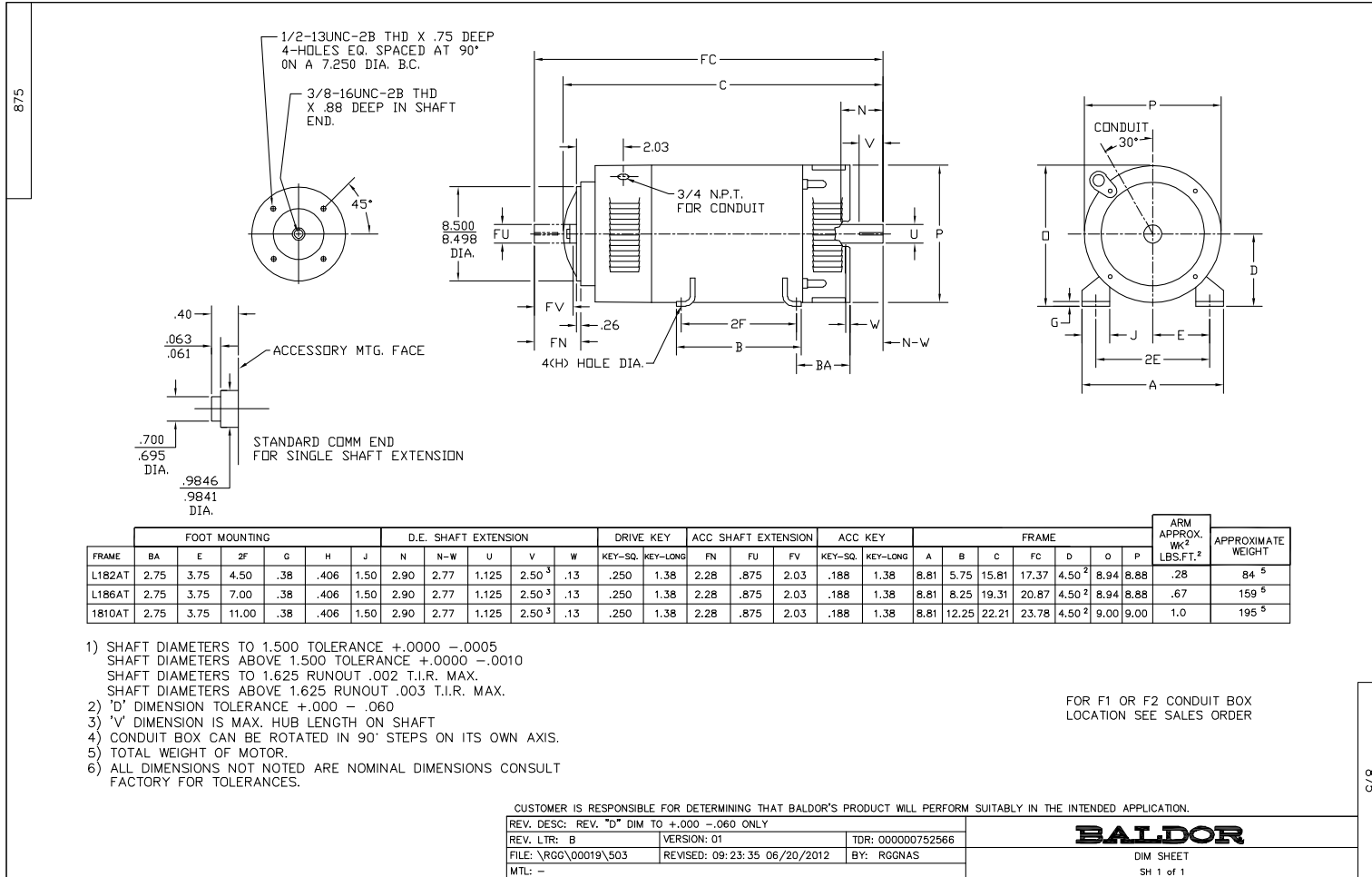
Product Information Packet

D2005P

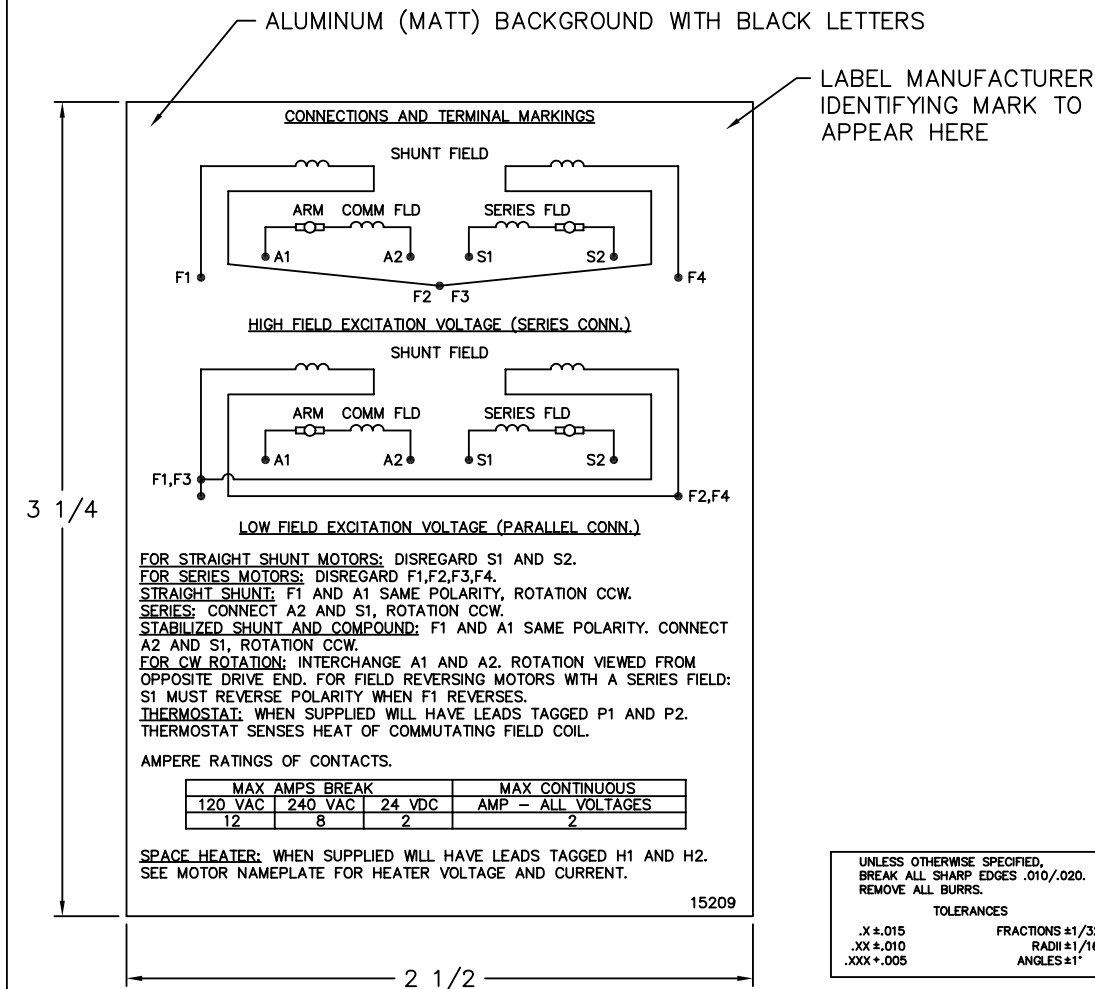
5HP, 1750RPM, 240V, DKPG, L186AT

Copyright © All product information within this document is subject to Baldor Electric Company copyright © protection, unless otherwise noted.

Part Detail			
Type:	DC	Prod. Type:	TR
Power Code:	D	Weight:	180
Frame Group:	L 0186AT	Mounting Pos.:	F3
HP:	5	Enclosure:	DPFG
RPM:	1750/2300	Wound:	STR. SHUNT
Service Factor:	1.0	Arm V:	240
Arm A:	17.70	Field V:	150/ 300
Field A:	1.00/.50	Field A Hot:	.74-.36/.37-.18
Insulation Class:	F	Ambient:	40
Duty:	CONT	DE Bearing:	6206
ODE Bearing:	6205	Brushes:	18044-4
Brush Qty.:			



15209



NOTE:
 MATERIAL .005 MINIMUM FULL HARD ALUMINUM DULL FINISH.
 TEMP. RANGE -20°C TO +125°C MAXIMUM.
 FOR INDOOR AND OUTDOOR MOUNTING BACK.
 METAL, PRESSURE SENSITIVE BACK. MUST MEET CSA STANDARD.
 THE CSA IDENTIFYING MARK OF THE LABEL MANUFACTURER MUST APPEAR IN THE UPPER RIGHT HAND CORNER AS INDICATED.

MATL: NOTED			
REV:	G	CHANGE ALL "NAMEPLATE" TEXT TO "LABEL"	
60291	SCALE: -	BY: BKW	REVISED: 02/19/97
	FILE: CHB00002485	TDR: 0115147	

BALDOR ELECTRIC Co.

LABEL, CONNECTIONS AND TERMINAL MARKINGS DC

15209


REL. S. O.	FRAME	RATING	RPM	ARM. VOLTS	ARM. AMPS
	L186	5.00HP	1750	240	17.7
WINDING TYPE		S.F.	ENCL.	AMB °C/INSUL	DUTY
STRAIGHT SHUNT		1.0	DRG	40/F	CONT
					300
POWER CODE	TYPE	WK 2 (LB-FT ²)	HOT ARM. CIR. RES.	FLD. AMPS@25 °C	HOT FIELD RES
D	TR	.7353	1.25	.499	809

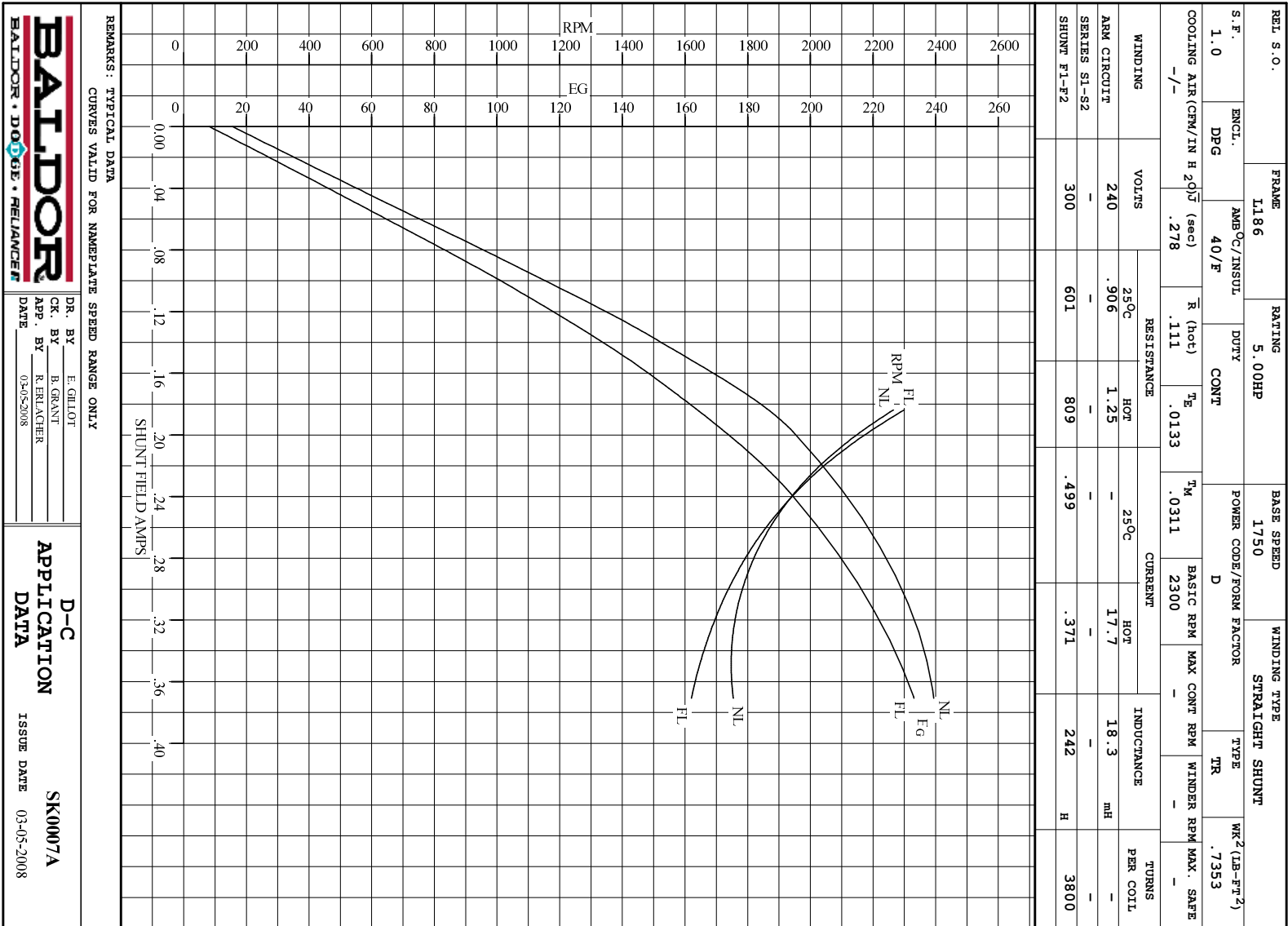
ARM. CIR. IND. (mh)	FIELD IND. (H)	COOLING AIR (CFM/IN H 20)	TURNS PER COIL SHUNT/SERIES	TEST DATE
18.2	242	-/-	3800/.00000	-

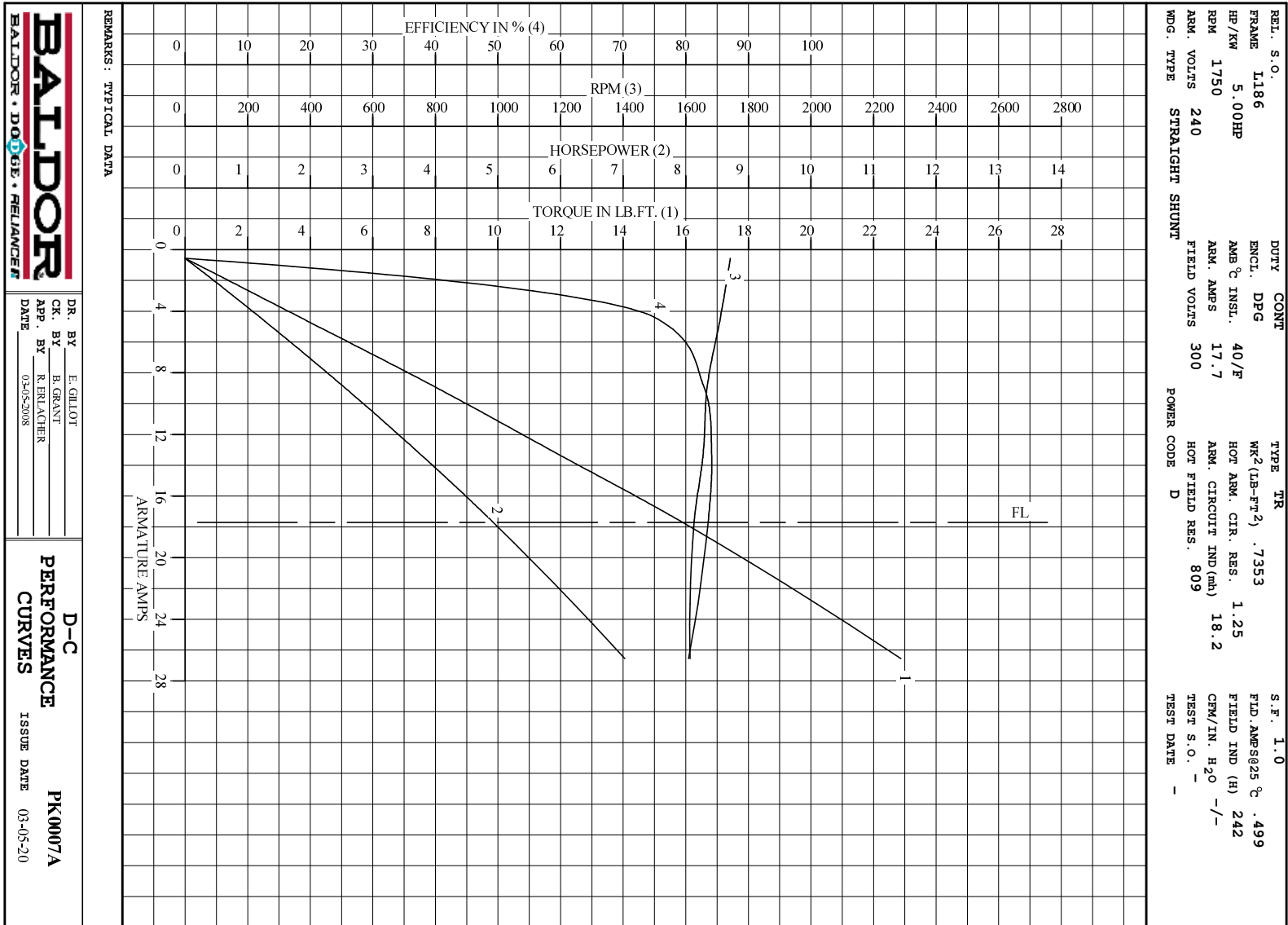
LOAD PERFORMANCE					
LOAD	AMPERES	TORQUE IN LB.-FT.	OUTPUT IN HP	RPM	% EFFICIENCY
NO LOAD	.56	0	0	1743	0
1/4	4.4	3.70	1.21	1711	75.1
2/4	8.8	7.93	2.52	1669	82.8
3/4	13	11.9	3.76	1656	84.1
4/4	18	15.9	4.92	1627	83.6
O.L.	27	22.9	7.03	1614	80.4

RPM VS. FIELD AMPS		Eg VS. FIELD AMPS		
FIELD AMPS	RPM N.L.	RPM F.L.	Eg N.L. @ BASE SPEED	Eg F.L. @ BASE SPEED
.370	1742	1626	239	233
.323	1754	1687	236	223
.277	1825	1800	227	209
.230	1980	1987	211	190
.183	2265	2300	185	164

REMARKS: TYPICAL DATA

 BALDOR • DOUG • RELIANCE	DR. BY E. GILLIOT	D-C MOTOR DK0007A PERFORMANCE DATA ISSUE DATE 03-05-2008
	CK. BY B. GRANT APP. BY R. ERLACHER DATE 03-05-2008	





DR. BY E. GILLOT
CK. BY B. GRANT
APP. BY R. RELIANCE
DATE 03-05-2008

D-C
PERFORMANCE
CURVES ISSUE DATE 03-05-20
PK0007A