

# **BALDOR® • RELIANCE**

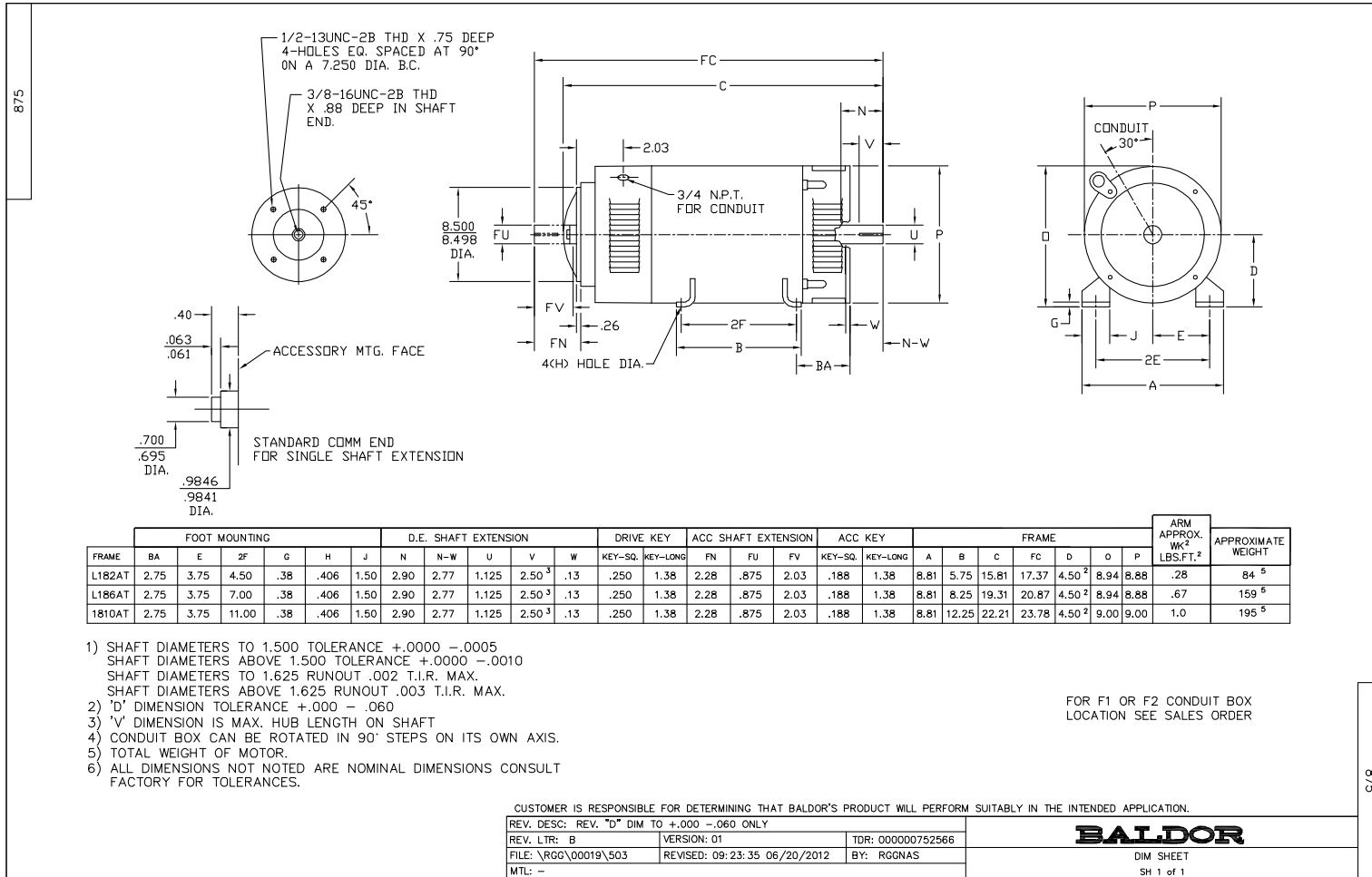
## **Product Information Packet**

### **D2007P**

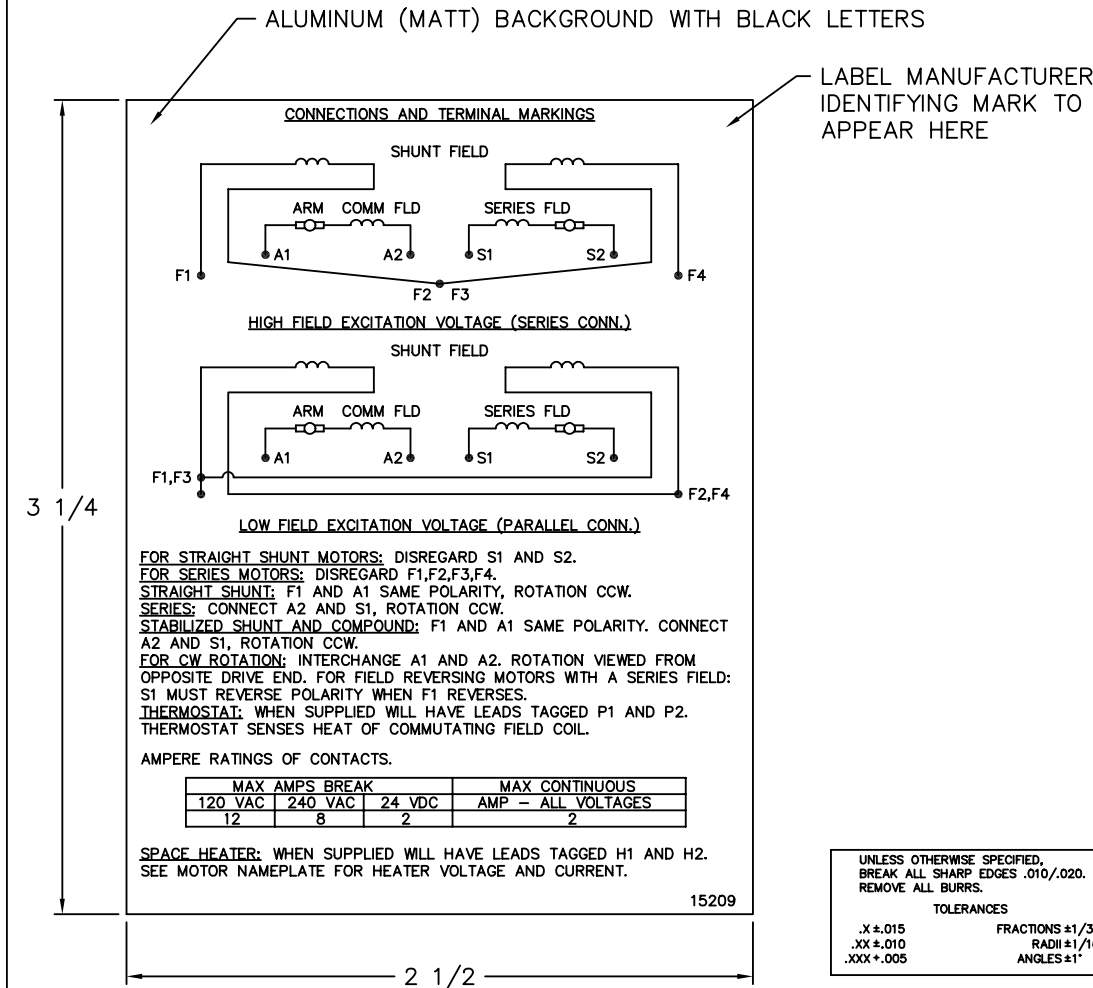
**7.5HP/1750RPM/D PHASE/PDFG/NEMA1810**

Copyright © All product information within this document is subject to Baldor Electric Company copyright © protection, unless otherwise noted.

Part Detail			
Type:	DC	Prod. Type:	T
Power Code:	D	Weight:	218
Frame Group:	1810AT	Mounting Pos.:	F1
HP:	7.5	Enclosure:	DPFG
RPM:	1750/2300	Wound:	STR. SHUNT
Service Factor:	1.0	Arm V:	240
Arm A:	27.80	Field V:	150/ 300
Field A:	1.28/.64	Field A Hot:	.92-.48/.46-.24
Insulation Class:	F	Ambient:	40
Duty:	CONT	DE Bearing:	6206
ODE Bearing:	6205	Brushes:	18044-4
Brush Qty.:			



15209



**NOTE:**  
 MATERIAL .005 MINIMUM FULL HARD ALUMINUM DULL FINISH.  
 TEMP. RANGE -20°C TO +125°C MAXIMUM.  
 FOR INDOOR AND OUTDOOR MOUNTING BACK.  
 METAL, PRESSURE SENSITIVE BACK. MUST MEET CSA STANDARD.  
 THE CSA IDENTIFYING MARK OF THE LABEL MANUFACTURER MUST APPEAR IN THE UPPER RIGHT HAND CORNER AS INDICATED.

UNLESS OTHERWISE SPECIFIED, BREAK ALL SHARP EDGES .010/.020. REMOVE ALL BURRS.

TOLERANCES

.X ± .015	FRACTIONS ±1/32
.XX ± .010	RADI ±1/16
.XXX ± .005	ANGLES ±1°

MATL: NOTED			
REV:	G	CHANGE ALL "NAMEPLATE" TEXT TO "LABEL"	
60291	SCALE: -	BY: BKW	REVISED: 02/19/97
	FILE: CHB00002485	TDR: 0115147	

**BALDOR ELECTRIC Co.**

LABEL, CONNECTIONS AND TERMINAL MARKINGS DC

15209

REL. S. O.	FRAME	RATING	RPM	ARM. VOLTS	ARM. AMPS
	1810	7.50HP	1750	240	27.8
WINDING TYPE		S. F.	ENCL.	AMB °C/INSUL	DUTY
STRAIGHT SHUNT		1.0	DRG	40/F	CONT
					300
POWER CODE		TYPE	WK 2 (LB-FT <sup>2</sup> )	HOT ARM. CIR. RES.	FLD. AMPS@25 °C
D		T	.9565	.651	.590
					HOT FIELD RES
					654

ARM. CIR. IND. (mh)	FIELD IND. (H)	COOLING AIR (CFM/IN H 20)	TURNS PER COIL SHUNT/SERIES	TEST DATE
12.0	154	-/-	3150/.00000	-

LOAD PERFORMANCE


LOAD	AMPERES	TORQUE IN LB.-FT.	OUTPUT IN HP	RPM	% EFFICIENCY
NO LOAD	.80	0	0	1897	0
1/4	7.0	5.38	1.93	1879	78.0
2/4	14	11.4	4.01	1843	84.9
3/4	21	17.2	5.99	1824	86.1
4/4	28	22.8	7.87	1810	85.6
O.L.	42	33.2	11.3	1794	82.9

RPM VS. FIELD AMPS

Eg VS. FIELD AMPS

FIELD AMPS	RPM N. L.	RPM F. L.	Eg N. L. @ BASE SPEED	Eg F. L. @ BASE SPEED
.458	1896	1810	220	215
.403	1886	1835	217	209
.349	1926	1922	211	199
.295	2039	2065	202	185
.240	2249	2300	185	166

REMARKS: TYPICAL DATA

	DR. BY E. GILLIOT	<b>D-C MOTOR PERFORMANCE DATA</b> DK00009A ISSUE DATE 09-16-2009
	CK. BY B. GRANT APP. BY R. ERLACHER DATE 03-12-2008	

