

# **BALDOR® • RELIANCE**

## **Product Information Packet**

### **D2010P**

**10HP, 1750/2300RPM, DC, 219AT, DPFG, F1**

Copyright © All product information within this document is subject to Baldor Electric Company copyright © protection, unless otherwise noted.

Part Detail			
Type:	DC	Prod. Type:	T
Power Code:	D	Weight:	245
Frame Group:	0219AT	Mounting Pos.:	F1
HP:	10	Enclosure:	DPFG
RPM:	1750/2300	Wound:	STR. SHUNT
Service Factor:	1.0	Arm V:	240
Arm A:	36.60	Field V:	150/ 300
Field A:	3.06/1.53	Field A Hot:	2.16-1.22/1.08-
Insulation Class:	F	Ambient:	40
Duty:	CONT	DE Bearing:	6207
ODE Bearing:	6207	Brushes:	150986-21-1
Brush Qty.:			

876-1

1/2-13UNC-2B THD X 1.00 DEEP  
4-HOLES EQUALLY SPACED  
ON A 7.250 DIA. B.C.

3/8-16 UNC-2B THD'S  
.88 DEEP IN SHAFT END

8.498  
8.500 DIA.

.40  
.19

1.1245  
1.1250 DIA.

ACCESSORY 'C' FACE

STANDARD COMM END  
FOR SINGLE SHAFT EXTENSION

FC  
C  
.75 ACCESSORY 'C' FACE  
.40  
.19  
N  
FN  
FU  
FV  
AIR IN  
AIR OUT  
BS  
2F  
B  
BA  
N-W  
U  
V  
W

AB  
AC  
P  
O  
D  
AF  
J  
E  
2E  
A  
HOLE FOR 'AA' CONDUIT

1-918

FRAME	FOOT MOUNTING					D.E. SHAFT EXTENSION					DRIVE KEY			ACC SHAFT			ACC KEY		FRAME						
	BA	E	2F	G	H	N	N-W	U	V	W	KEY-SQ.	KEY-LONG	FN	FU	FV	KEY-SQ.	KEY-LONG	A	B	C	FC	D	O	P	
218AT	3.50	4.25	10.00	.50	.406	2.00	3.00	2.75	1.375	2.50 <sup>3</sup>	.25	.312	1.75	2.44	1.125	2.19	.250	2.25	10.38	11.00	24.25	25.93	5.25 <sup>2</sup>	10.47	10.44
219AT	3.50	4.25	11.00	.50	.406	2.00	3.00	2.75	1.375	2.50 <sup>3</sup>	.25	.312	1.75	2.44	1.125	2.19	.250	2.25	10.38	12.00	25.25	26.93	5.25 <sup>2</sup>	10.47	10.44
2110AT	3.50	4.25	12.50	.50	.406	2.00	3.00	2.75	1.375	2.50 <sup>3</sup>	.25	.312	1.75	2.44	1.125	2.19	.250	2.25	10.38	13.50	26.75	28.43	5.25 <sup>2</sup>	10.47	10.44
258AT	4.25	5.00	12.50	.69	.531	2.25	3.44	3.25	1.625	3.00 <sup>3</sup>	.19	.375	2.31	3.33	1.375	3.08	.312	3.00	12.38	14.00	27.25	29.84	6.25 <sup>2</sup>	12.47	12.44
259AT	4.25	5.00	14.00	.69	.531	2.25	3.44	3.25	1.625	3.00 <sup>3</sup>	.19	.375	2.31	3.33	1.375	3.08	.312	3.00	12.38	15.50	28.75	31.34	6.25 <sup>2</sup>	12.47	12.44
2510AT	4.25	5.00	16.00	.69	.531	2.25	3.44	3.25	1.625	3.00 <sup>3</sup>	.19	.375	2.31	3.33	1.375	3.08	.312	3.00	12.38	17.56	30.75	33.34	6.25 <sup>2</sup>	12.47	12.44
2513AT	4.25	5.00	22.00	.69	.531	2.25	3.44	3.25	1.625	3.00 <sup>3</sup>	.19	.375	2.31	3.33	1.375	3.08	.312	3.00	12.38	23.50	36.75	39.34	6.25 <sup>2</sup>	12.47	12.44

FRAME	CONDUIT BOX							ARM APPROX. WK <sup>2</sup> LBS.FT. <sup>2</sup>	APPROXIMATE WEIGHT
	AA	AB	AC	AF	BS	XL	XN		
218AT	3/4-1	7.91	6.44	2.44	8.38	3.81	3.12	1.35	242 <sup>5</sup>
219AT	3/4-1	7.91	6.44	2.44	9.38	3.81	3.12	1.49	260 <sup>5</sup>
2110AT	3/4-1	7.91	6.44	2.44	10.88	3.81	3.12	1.71	286 <sup>5</sup>
258AT	1 1/4	9.35	7.72	2.94	9.75	4.94	4.00	2.91	366 <sup>5</sup>
259AT	1 1/4	9.35	7.72	2.94	11.25	4.94	4.00	3.31	411 <sup>5</sup>
2510AT	1 1/4	9.35	7.72	2.94	13.25	4.94	4.00	3.80	471 <sup>5</sup>
2513AT	1 1/4	9.35	7.72	2.94	19.25	4.94	4.00	5.27	532 <sup>5</sup>

1) SHAFT DIAMETERS TO 1.500 TOLERANCE +.0000 - .0005  
SHAFT DIAMETERS ABOVE 1.500 TOLERANCE +.0000 - .0010  
SHAFT DIAMETERS TO 1.625 RUNOUT .002 T.I.R. MAX.  
SHAFT DIAMETERS ABOVE 1.625 RUNOUT .003 T.I.R. MAX.

2) 'D' DIMENSION TOLERANCE +.000 - .060  
3) 'V' DIMENSION IS MAX. HUB LENGTH ON SHAFT  
4) CONDUIT BOX CAN BE ROTATED IN 90° STEPS ON ITS OWN AXIS.  
5) TOTAL WEIGHT OF MOTOR.  
6) ALL DIMENSIONS NOT NOTED ARE NOMINAL DIMENSIONS CONSULT FACTORY FOR TOLERANCES.

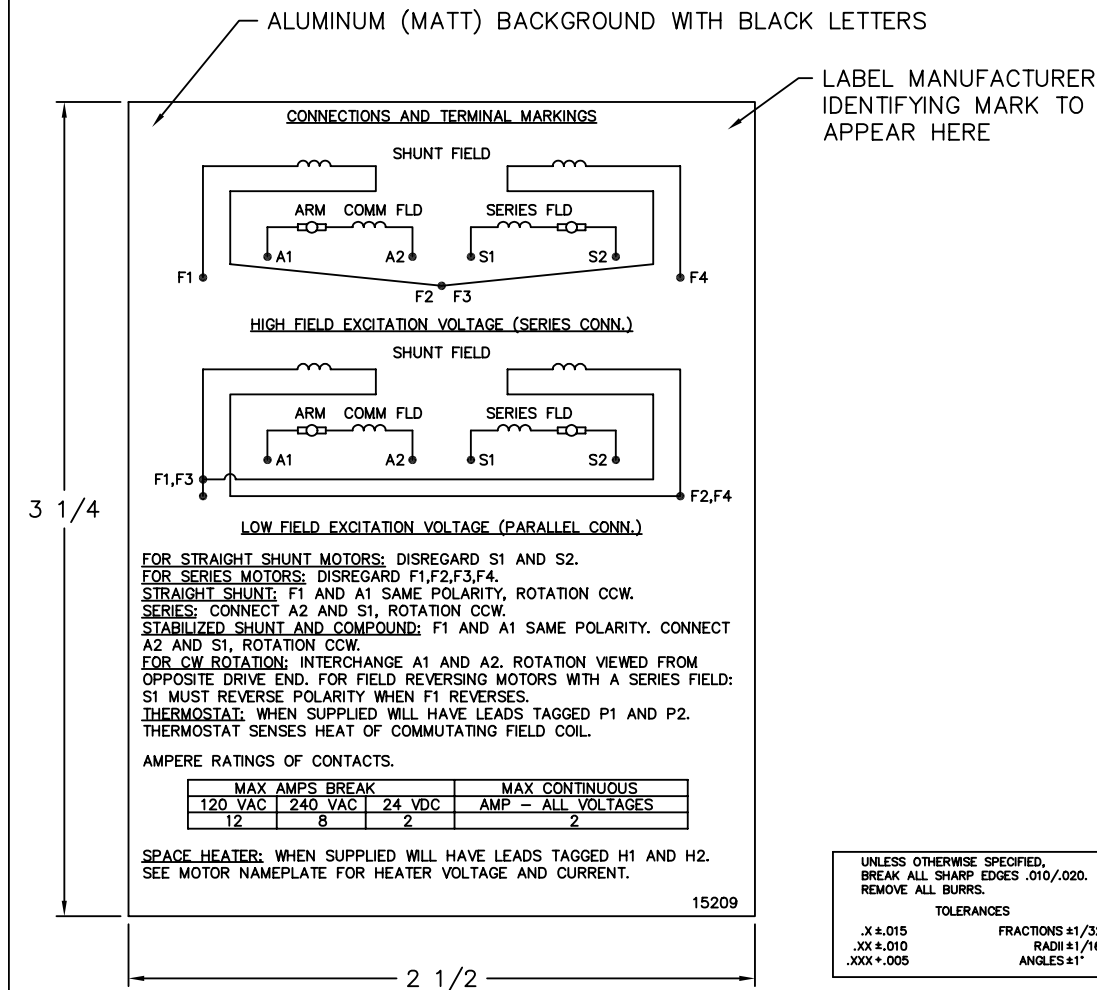
FOR F1 OR F2 CONDUIT BOX LOCATION SEE SALES ORDER

CUSTOMER IS RESPONSIBLE FOR DETERMINING THAT BALDOR'S PRODUCT WILL PERFORM SUITABLY IN THE INTENDED APPLICATION.

REV. DESC: REV. 'D' DIM TO +.000 - .060 ONLY		
REV. LTR: B	VERSION: 01	TDR: 000000752566
FILE: \RGG\00019\505	REVISED: 09:35:03 06/20/2012	BY: RGNAS
MTL: -		

**BALDOR**  
DIM SHEET, 218AT-2513AT, DPFG, STD  
SH 1 of 1

15209



**NOTE:**  
 MATERIAL .005 MINIMUM FULL HARD ALUMINUM DULL FINISH.  
 TEMP. RANGE -20°C TO +125°C MAXIMUM.  
 FOR INDOOR AND OUTDOOR MOUNTING BACK.  
 METAL, PRESSURE SENSITIVE BACK. MUST MEET CSA STANDARD.  
 THE CSA IDENTIFYING MARK OF THE LABEL MANUFACTURER MUST APPEAR IN THE UPPER RIGHT HAND CORNER AS INDICATED.

UNLESS OTHERWISE SPECIFIED, BREAK ALL SHARP EDGES .010/.020. REMOVE ALL BURRS.

TOLERANCES

.X ± .015	FRACTIONS ± 1/32
.XX ± .010	RADI ± 1/16
.XXX ± .005	ANGLES ± 1°

MATL: NOTED			
REV:	G	CHANGE ALL "NAMEPLATE" TEXT TO "LABEL"	
60291	SCALE: -	BY: BKW	REVISED: 02/19/97
	FILE: CHB00002485	TDR: 0115147	

**BALDOR ELECTRIC Co.**

LABEL, CONNECTIONS AND TERMINAL MARKINGS DC

15209


REL S.O.	FRAME	RATING	RPM	ARM. VOLTS	ARM. AMPS
	219AT	10.0HP	1750	240	36.6
WINDING TYPE		S.F.	ENCL.	AMB °C/INSUL	DUTY
STRAIGHT SHUNT		1.0	DRG	40/F	CONT
					300
POWER CODE	TYPE	WK 2 (LB-FT 2)	HOT ARM.CIR.RES.	FLD. AMPS@25 °C	HOT FIELD RES
D	T	1.201	.660	1.53	278

ARM. CIR. IND. (mh)	FIELD IND. (H)	COOLING AIR(CFM/IN H 20)	TURNS PER COIL SHUNT/SERIES	TEST DATE
7.13	41.1	-/-	2600/.00000	-

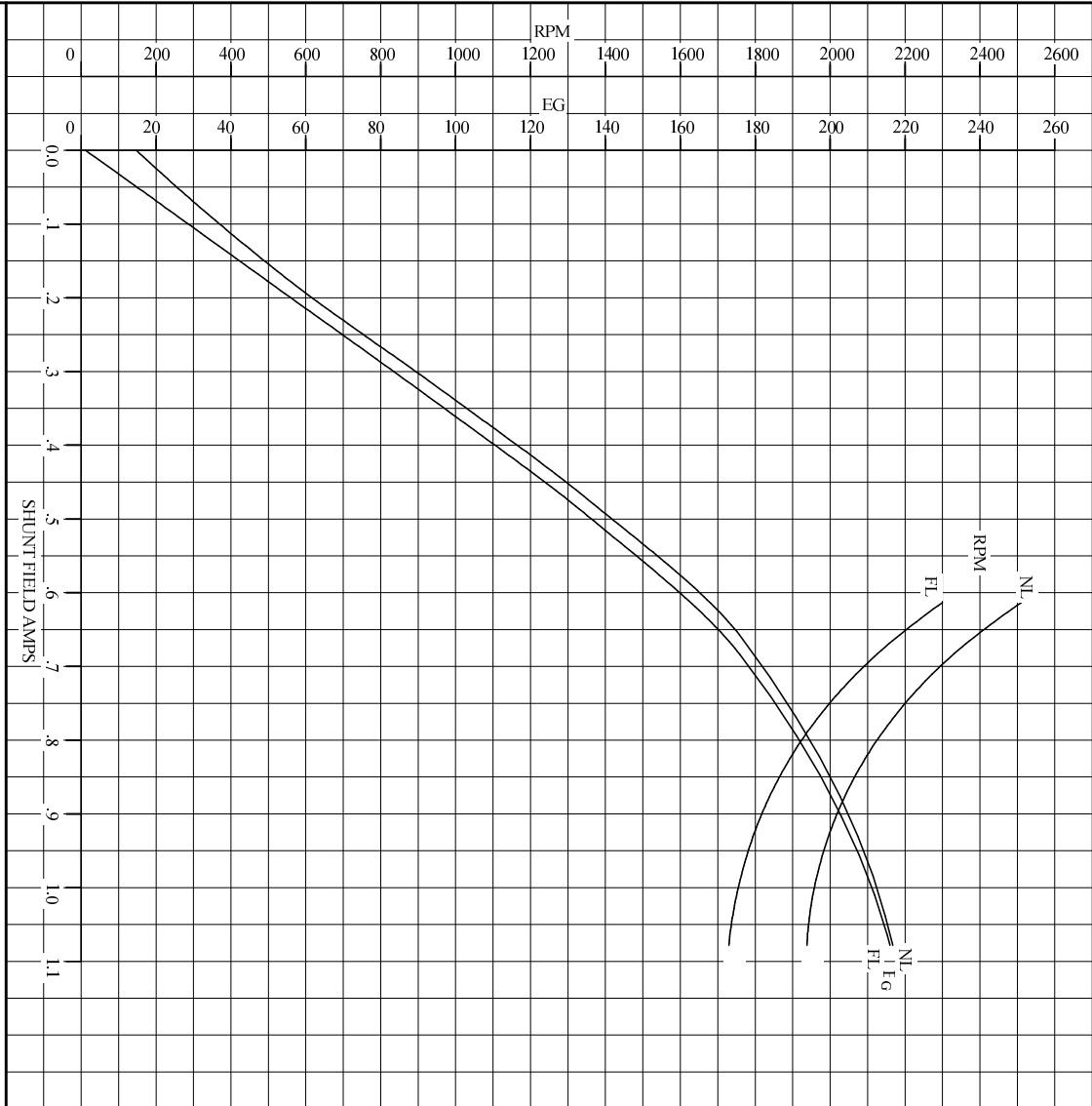
LOAD PERFORMANCE					
LOAD	AMPERES	TORQUE IN LB.-FT.	OUTPUT IN HP	RPM	% EFFICIENCY
NO LOAD	1.8	0	0	1924	0
1/4	9.2	6.35	2.28	1883	65.2
2/4	18	14.3	4.98	1834	76.1
3/4	27	22.1	7.51	1784	79.2
4/4	37	29.8	9.88	1740	79.4
O.L.	55	44.8	14.1	1653	77.0

RPM VS. FIELD AMPS			Eg VS. FIELD AMPS		
FIELD AMPS	RPM N.L.	RPM F.L.	Eg N.L. @ BASE SPEED	Eg F.L. @ BASE SPEED	
1.07	1924	1740	216	216	
.961	1975	1774	212	210	
.845	2069	1869	203	199	
.729	2236	2034	188	183	
.613	2510	2300	167	162	

REMARKS: TYPICAL DATA

	DR. BY E. H. GILLOT	<b>D-C MOTOR PERFORMANCE DATA</b> DK0018A ISSUE DATE 04-02-2008
	CK. BY B. GRANT APP. BY R. RELANCHER DATE 04-02-2008	

REF. S.O.	FRAME	RATING	BASE SPEED	WINDING TYPE
	219AT	10.0HP	1750	STRAIGHT SHUNT
S.F.	ENCL.	AMB°C/INSUL	DUTY	POWER CODE/FORM FACTOR
1.0	DPG	40/F	CONT	D
COOLING AIR (CFM/IN H <sup>2</sup> O)		R (hot)	T <sub>m</sub>	BASIC RPM
-/-		.227	.124	1900
		T <sub>e</sub>	T <sub>m</sub>	MAX CONT RPM
		.00986	.0282	2300
WINDING	VOLTS	RESISTANCE		INDUCTANCE
		25°C	HOT	PER COIL
ARM CIRCUIT	240	.572	.660	7.14 mH
SERIES S1-S2	-	-	-	-
SHUNT F1-F2	300	1.95	2.78	41.2 H
			1.53	1.08
				2600



REMARKS: TYPICAL DATA  
CURVES VALID FOR NAMEPLATE SPEED RANGE ONLY

<b>BALDOR</b> BALDOR • DOUGLASS • RELIANCE	DR. BY	E.H. GILLOT	<b>D-C</b>
	CK. BY	B. GRANT	
	APP. BY	R. REINACHER	<b>APPLICATION</b>
	DATE	04-02-2008	<b>DATA</b>
			ISSUE DATE 04-02-2008
			SK0018A

