

BALDOR® • RELIANCE

Product Information Packet

D2015P

15HP, 1750/2300RPM, DC, 258AT, DPFG, F1

Copyright © All product information within this document is subject to Baldor Electric Company copyright © protection, unless otherwise noted.

Part Detail			
Type:	DC	Prod. Type:	T
Power Code:	D	Weight:	250
Frame Group:	258AT	Mounting Pos.:	F1
HP:	15	Enclosure:	DPFG
RPM:	1750/2300	Wound:	STR. SHUNT
Service Factor:	1.0	Arm V:	240
Arm A:	55.00	Field V:	150/ 300
Field A:	3.56/1.78	Field A Hot:	2.60-1.60/1.30-
Insulation Class:	F	Ambient:	40
Duty:	CONT	DE Bearing:	6209
ODE Bearing:	6207	Brushes:	150986-25-1
Brush Qty.:			

876-1

1/2-13UNC-2B THD X 1.00 DEEP
4-HOLES EQUALLY SPACED
ON A 7.250 DIA. B.C.

3/8-16 UNC-2B THD'S
.88 DEEP IN SHAFT END

8.498
8.500 DIA.

.40
.19

1.1245
1.1250 DIA.

ACCESSORY 'C' FACE

STANDARD COMM END
FOR SINGLE SHAFT EXTENSION

FC
C
.75 ACCESSORY 'C' FACE
.40
.19
N
FN
FU
FV
AIR IN
AIR OUT
BS
2F
B
BA
N-W
U
V
W

AB
AC
P
O
D
AF
J
E
2E
A
HOLE FOR 'AA' CONDUIT

(4)H HOLE DIA.

FRAME	FOOT MOUNTING					D.E. SHAFT EXTENSION					DRIVE KEY			ACC SHAFT			ACC KEY		FRAME						
	BA	E	2F	G	H	J	N	N-W	U	V	W	KEY-SQ.	KEY-LONG	FN	FU	FV	KEY-SQ.	KEY-LONG	A	B	C	FC	D	O	P
218AT	3.50	4.25	10.00	.50	.406	2.00	3.00	2.75	1.375	2.50 ³	.25	.312	1.75	2.44	1.125	2.19	.250	2.25	10.38	11.00	24.25	25.93	5.25 ²	10.47	10.44
219AT	3.50	4.25	11.00	.50	.406	2.00	3.00	2.75	1.375	2.50 ³	.25	.312	1.75	2.44	1.125	2.19	.250	2.25	10.38	12.00	25.25	26.93	5.25 ²	10.47	10.44
2110AT	3.50	4.25	12.50	.50	.406	2.00	3.00	2.75	1.375	2.50 ³	.25	.312	1.75	2.44	1.125	2.19	.250	2.25	10.38	13.50	26.75	28.43	5.25 ²	10.47	10.44
258AT	4.25	5.00	12.50	.69	.531	2.25	3.44	3.25	1.625	3.00 ³	.19	.375	2.31	3.33	1.375	3.08	.312	3.00	12.38	14.00	27.25	29.84	6.25 ²	12.47	12.44
259AT	4.25	5.00	14.00	.69	.531	2.25	3.44	3.25	1.625	3.00 ³	.19	.375	2.31	3.33	1.375	3.08	.312	3.00	12.38	15.50	28.75	31.34	6.25 ²	12.47	12.44
2510AT	4.25	5.00	16.00	.69	.531	2.25	3.44	3.25	1.625	3.00 ³	.19	.375	2.31	3.33	1.375	3.08	.312	3.00	12.38	17.56	30.75	33.34	6.25 ²	12.47	12.44
2513AT	4.25	5.00	22.00	.69	.531	2.25	3.44	3.25	1.625	3.00 ³	.19	.375	2.31	3.33	1.375	3.08	.312	3.00	12.38	23.50	36.75	39.34	6.25 ²	12.47	12.44

FRAME	CONDUIT BOX							ARM APPROX. WK ² LBS.FT. ²	APPROXIMATE WEIGHT
	AA	AB	AC	AF	BS	XL	XN		
218AT	3/4-1	7.91	6.44	2.44	8.38	3.81	3.12	1.35	242 ⁵
219AT	3/4-1	7.91	6.44	2.44	9.38	3.81	3.12	1.49	260 ⁵
2110AT	3/4-1	7.91	6.44	2.44	10.88	3.81	3.12	1.71	286 ⁵
258AT	1 1/4	9.35	7.72	2.94	9.75	4.94	4.00	2.91	366 ⁵
259AT	1 1/4	9.35	7.72	2.94	11.25	4.94	4.00	3.31	411 ⁵
2510AT	1 1/4	9.35	7.72	2.94	13.25	4.94	4.00	3.80	471 ⁵
2513AT	1 1/4	9.35	7.72	2.94	19.25	4.94	4.00	5.27	532 ⁵

1) SHAFT DIAMETERS TO 1.500 TOLERANCE +.0000 - .0005
SHAFT DIAMETERS ABOVE 1.500 TOLERANCE +.0000 - .0010
SHAFT DIAMETERS TO 1.625 RUNOUT .002 T.I.R. MAX.
SHAFT DIAMETERS ABOVE 1.625 RUNOUT .003 T.I.R. MAX.
2) 'D' DIMENSION TOLERANCE +.000 - .060
3) 'V' DIMENSION IS MAX. HUB LENGTH ON SHAFT
4) CONDUIT BOX CAN BE ROTATED IN 90° STEPS ON ITS OWN AXIS.
5) TOTAL WEIGHT OF MOTOR.
6) ALL DIMENSIONS NOT NOTED ARE NOMINAL DIMENSIONS CONSULT FACTORY FOR TOLERANCES.

FOR F1 OR F2 CONDUIT BOX LOCATION SEE SALES ORDER

CUSTOMER IS RESPONSIBLE FOR DETERMINING THAT BALDOR'S PRODUCT WILL PERFORM SUITABLY IN THE INTENDED APPLICATION.

REV. DESC: REV. 'D' DIM TO +.000 - .060 ONLY		
REV. LTR: B	VERSION: 01	TDR: 000000752566
FILE: \RGG\00019\505	REVISED: 09:35:03 06/20/2012	BY: RGNAS
MTL: -		

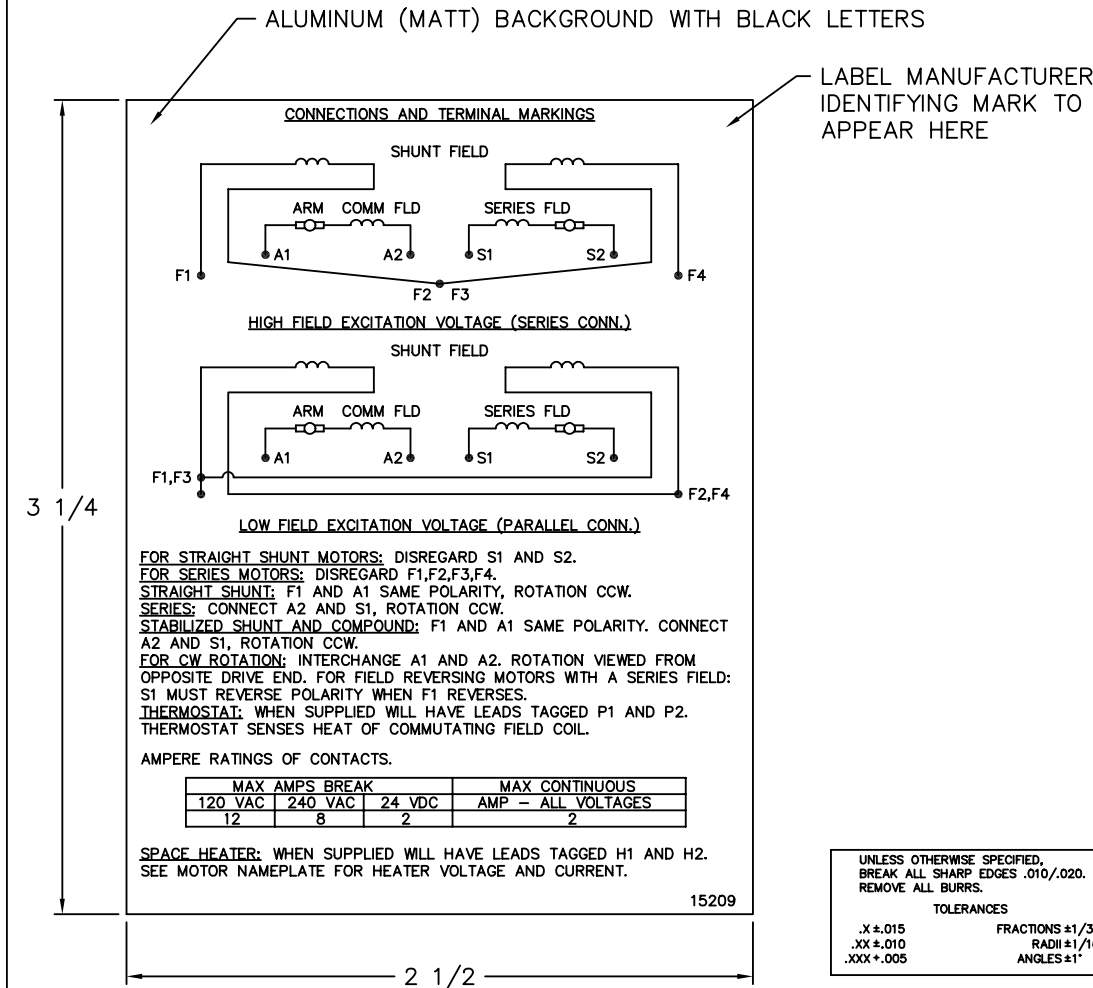
BALDOR

DIM SHEET,218AT-2513AT,DPFG,STD

SH 1 of 1

1-918

15209



NOTE:
 MATERIAL .005 MINIMUM FULL HARD ALUMINUM DULL FINISH.
 TEMP. RANGE -20°C TO +125°C MAXIMUM.
 FOR INDOOR AND OUTDOOR MOUNTING BACK.
 METAL, PRESSURE SENSITIVE BACK. MUST MEET CSA STANDARD.
 THE CSA IDENTIFYING MARK OF THE LABEL MANUFACTURER MUST APPEAR IN THE UPPER RIGHT HAND CORNER AS INDICATED.

UNLESS OTHERWISE SPECIFIED, BREAK ALL SHARP EDGES .010/.020. REMOVE ALL BURRS.

TOLERANCES

.X ± .015	FRACTIONS ±1/32
.XX ± .010	RADI ±1/16
.XXX ± .005	ANGLES ±1°

MATL: NOTED			
REV:	G	CHANGE ALL "NAMEPLATE" TEXT TO "LABEL"	
60291	SCALE: -	BY: BKW	REVISED: 02/19/97
	FILE: CHB00002485	TDR: 0115147	

BALDOR ELECTRIC Co.

LABEL, CONNECTIONS AND TERMINAL MARKINGS DC

15209


REL S.O.	FRAME	RATING	RPM	ARM. VOLTS	ARM. AMPS
	258	15.0HP	1750	240	55.0
WINDING TYPE		S.F.	ENCL.	AMB °C/INSUL	DUTY
STRAIGHT SHUNT		1.0	DRG	40/F	CONT
					300
POWER CODE	TYPE	WK 2 (LB-FT ²)	HOT ARM.CIR.RES.	FLD. AMPS@25 °C	HOT FIELD RES
D	T	2.402	.409	1.77	230

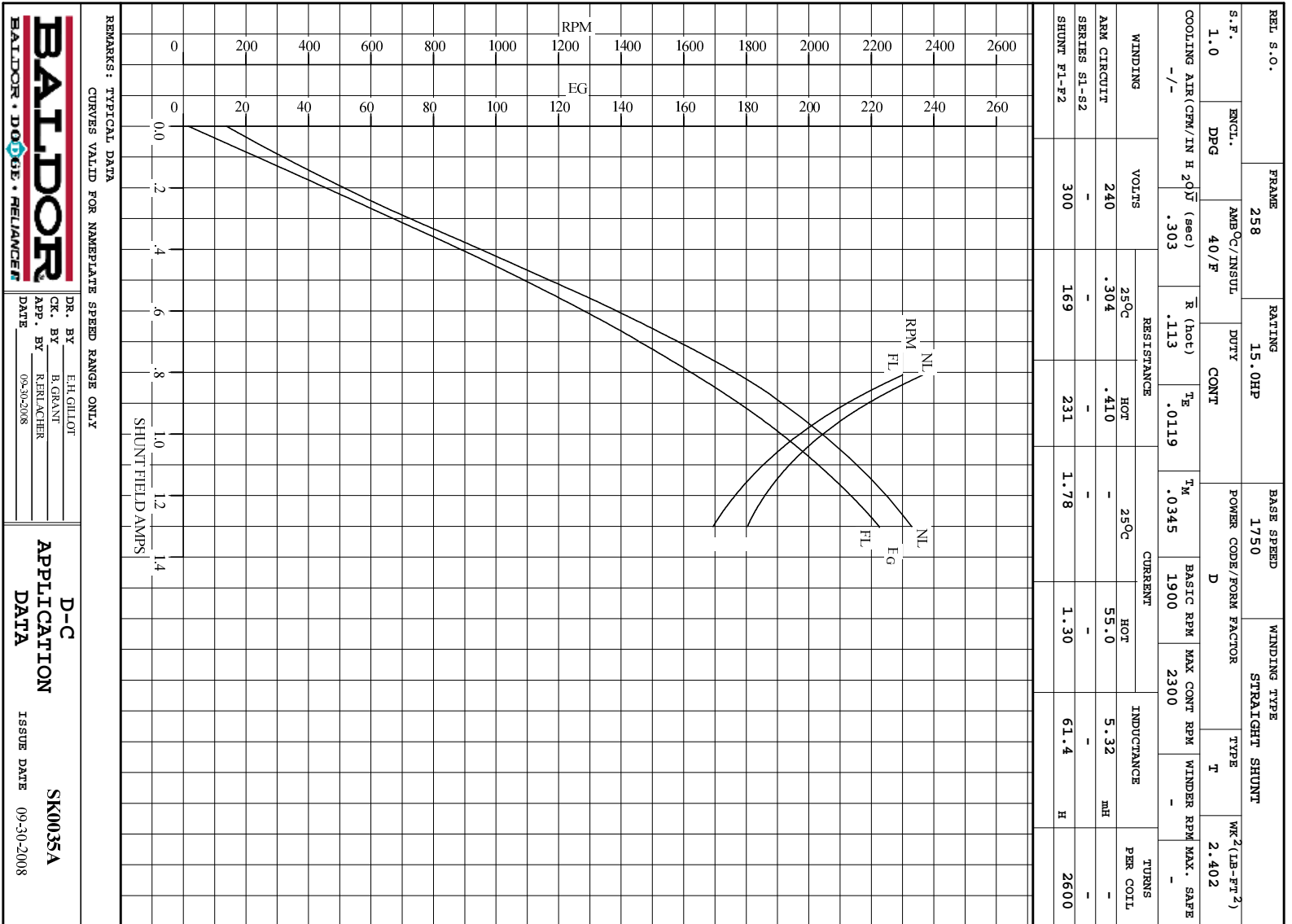
ARM. CIR. IND. (mh)	FIELD IND. (H)	COOLING AIR(CFM/IN H 20)	TURNS PER COIL SHUNT/SERIES	TEST DATE
5.32	61.3	-/-	2600/.00000	-

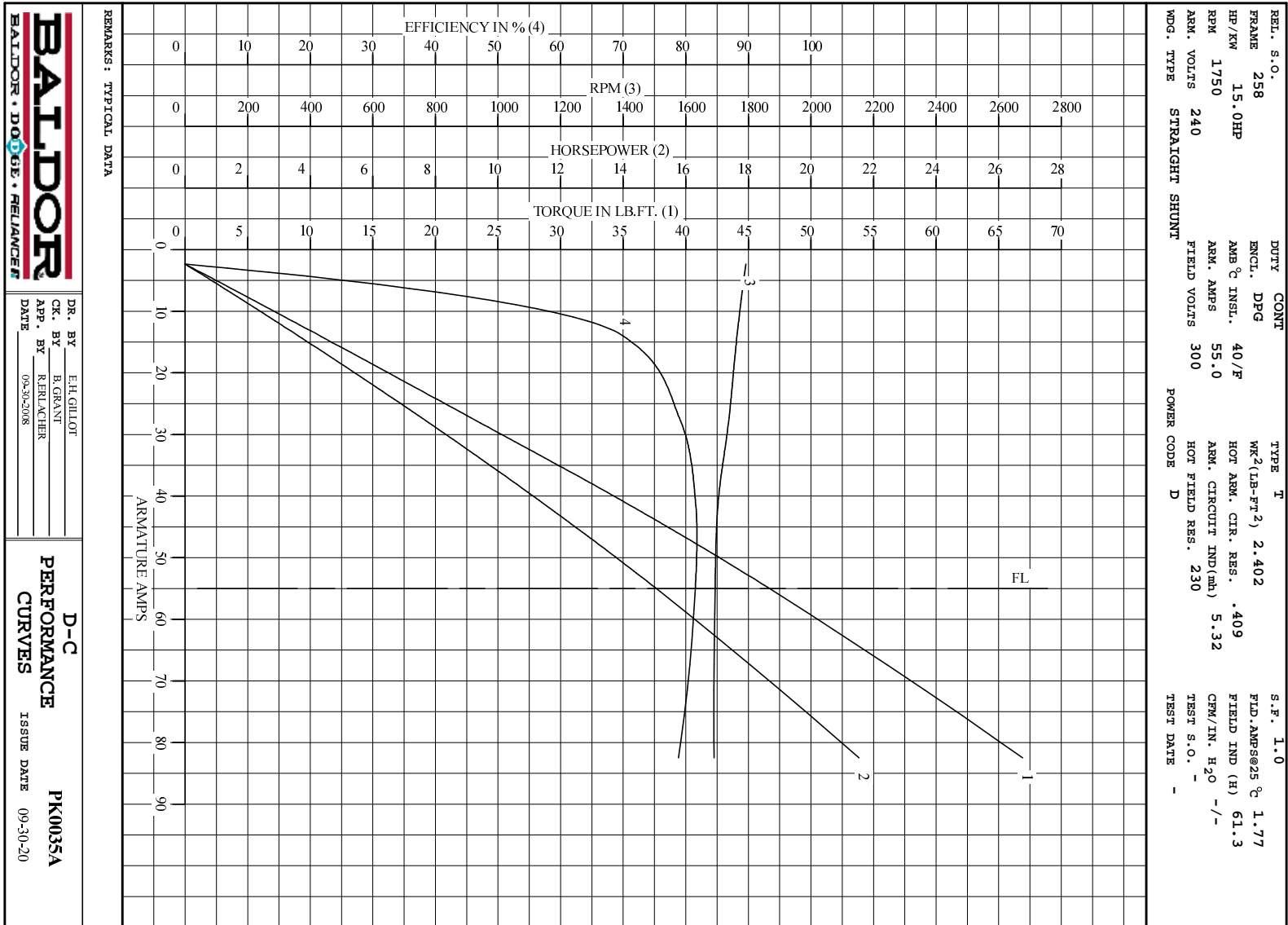
LOAD PERFORMANCE					
LOAD	AMPERES	TORQUE IN LB.-FT.	OUTPUT IN HP	RPM	% EFFICIENCY
NO LOAD	2.3	0	0	1792	0
1/4	14	10.6	3.55	1764	69.6
2/4	28	23.0	7.62	1738	79.1
3/4	41	35.3	11.5	1703	81.6
4/4	55	46.7	15.1	1694	81.5
O.L.	83	66.9	21.5	1690	78.8

RPM VS. FIELD AMPS			Eg VS. FIELD AMPS		
FIELD AMPS	RPM N.L.	RPM F.L.	Eg N.L. @ BASE SPEED	Eg F.L. @ BASE SPEED	
1.30	1792	1693	232	222	
1.17	1874	1782	223	211	
1.05	1982	1903	211	198	
.931	2139	2070	196	182	
.808	2364	2300	177	163	

REMARKS: TYPICAL DATA

	DR. BY E. H. GILLOT	D-C MOTOR PERFORMANCE DATA DK0035A ISSUE DATE 09-30-2008
	CK. BY B. GRANT APP. BY R. RELANCHER DATE 09-30-2008	





DR. BY E.H.GILLOT
 CK. BY B.GRAVITT
 APP. BY R.FELACHER
 DATE 09-30-2008

D-C
PERFORMANCE
CURVES ISSUE DATE 09-30-20
PK0035A