

BALDOR® • RELIANCE

Product Information Packet

D2025P

25HP/1750-2300RPM/DC/NEMA 288AT

Copyright © All product information within this document is subject to Baldor Electric Company copyright © protection, unless otherwise noted.

Part Detail			
Type:	DC	Prod. Type:	T
Power Code:	D	Weight:	575
Frame Group:	0288AT	Mounting Pos.:	F1
HP:	25	Enclosure:	DPFG
RPM:	1750/2300	Wound:	STR. SHUNT
Service Factor:	1.0	Arm V:	240
Arm A:	89.20	Field V:	300
Field A:	2.32	Field A Hot:	1.49-1.94/1.26-
Insulation Class:	F	Ambient:	40
Duty:	CONT	DE Bearing:	6210
ODE Bearing:	6209	Brushes:	28610-1
Brush Qty.:			

CUSTOMER NAME		MODEL NO.		MTG.		REMARKS:	
CUSTOMER P.O.		FRAME		R.P.M.		PHASE	
CERTIFIED BY		H.P.		TYPE		INSUL.	
DATE		VOLTS		ENCL.		FREQ.	
						SHEET 2 OF 2	
UNITS:		SCALE:		PROPORTION:		PART NUMBER	
INCH		NONE		NONE		876	
						DWG. SIZE	
						A	

1/2-13UNC-2B THD X 1.00 DEEP
4-HOLES EQUALLY SPACED
ON A 7.250 DIA. B.C.

3/8-16 UNC-2B THD'S
.88 DEEP IN SHAFT END

1.1245
1.1250
DIA.

.40
.19
ACCESSORY
'C' FACE

STANDARD COMM END
FOR SINGLE SHAFT EXTENSION

FC
C
-40
-19
N
FU
FV
FN
-25
AIR IN
AIR OUT
BS
BF
N-W
BA
N
V
U
V

(4)H HOLE DIA.
(6)H FOR 287-BAT

-2F (287-BAT ONLY)

AB
P
AC
XL
AF
J
E
A
D
O
AE

FRAME	FOOT MOUNTING				D.E. SHAFT EXTENSION				DRIVE KEY				ACC KEY				FRAME								
	BA	E	2F	G	H	J	N	N-W	U	V	W	KEY-50	KEY-LONG	FN	FU	FV	KEY-50	KEY-LONG	A	B	C	FC	D	O	P
287AT	4.75	5.50	12.50	.69	.531	2.50	3.91	3.75	1.875	3.50 ³	.16	.500	2.50	3.44	1.625	3.19	.375	2.44	13.81	14.13	31.00	33.71	7.00 ²	13.88	13.75
287-BAT	4.75	5.50	12.50 & 14.00	.69	.531	2.50	3.91	3.75	1.875	3.50 ³	.16	.500	2.50	3.44	1.625	3.19	.375	2.44	13.81	15.62	31.00	33.71	7.00 ²	13.88	13.75
288AT	4.75	5.50	14.00	.69	.531	2.50	3.91	3.75	1.875	3.50 ³	.16	.500	2.50	3.44	1.625	3.19	.375	2.44	13.81	15.62	32.75	35.46	7.00 ²	13.88	13.75
2810AT	4.75	5.50	16.00	.69	.531	2.50	3.91	3.75	1.875	3.50 ³	.16	.500	2.50	3.44	1.625	3.19	.375	2.44	13.81	16.62	36.75	39.46	7.00 ²	13.88	13.75
2811AT	4.75	5.50	20.00	.69	.531	2.50	3.91	3.75	1.875	3.50 ³	.16	.500	2.50	3.44	1.625	3.19	.375	2.44	13.81	21.62	40.68	43.64	7.00 ²	13.88	13.75
2813AT	4.75	5.50	25.00	.69	.531	2.50	3.91	3.75	1.875	3.50 ³	.16	.500	2.50	3.44	1.625	3.19	.375	2.44	13.81	26.62	44.62	47.84	7.00 ²	13.88	13.75

FRAME	CONDUIT BOX				AIR APPROX. LB/FT ³	APPROXIMATE WEIGHT			
	AA	AB	AC	AF					
287AT	1 1/4	11.88	9.25	5.00	10.89	7.88	5.25	4.67	506 ⁵
287-BAT	1 1/4	11.88	9.25	5.00	10.89	7.88	5.25	4.67	506 ⁵
288AT	1 1/4	11.88	9.25	5.00	12.64	7.88	5.25	5.36	566 ⁵
2810AT	1 1/4	11.88	9.25	5.00	16.64	7.88	5.25	6.80	726 ⁵
2811AT	1 1/4	11.88	9.25	5.00	19.14	7.88	5.25	7.62	791 ⁵
2813AT	1 1/4	11.88	9.25	5.00	23.64	7.88	5.25	9.40	796 ⁵

1) SHAFT DIAMETERS TO 1.500 TOLERANCE +.0000 - .0005
SHAFT DIAMETERS ABOVE 1.500 TOLERANCE +.0000 - .0010
SHAFT DIAMETERS ABOVE 1.625 RUNOUT .002 T.I.R. MAX.
SHAFT DIAMETERS ABOVE 1.625 RUNOUT .003 T.I.R. MAX.

2) 'D' DIMENSION TOLERANCE +.000 - .060

3) 'V' DIMENSION IS MAX. HUB LENGTH ON SHAFT

4) CONDUIT BOX CAN BE ROTATED IN 90° STEPS ON ITS OWN AXIS.

5) TOTAL WEIGHT OF MOTOR.

6) ALL DIMENSIONS NOT NOTED ARE NOMINAL DIMENSIONS CONSULT FACTORY FOR TOLERANCES.

FOR F1 OR F2 CONDUIT BOX LOCATION SEE SALES ORDER

DESIGNER	CSL	7-19-91
ENGINEER	REL	7-19-91
ENGINEER	DA C	7-19-91
MANUF.	RL	7-19-91

BALDOR

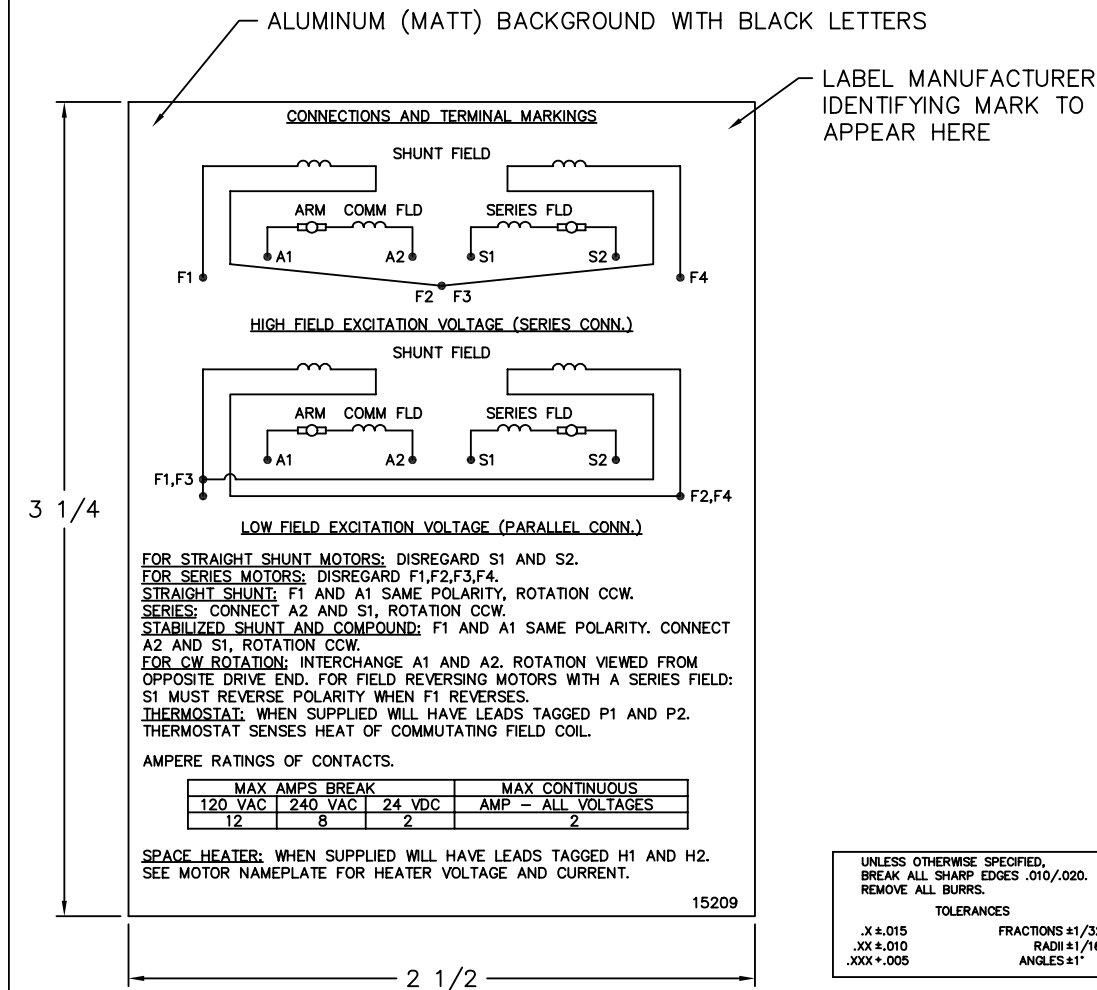
TITLE: DIMENSION SHEET
DPFG, STD AT

SHEET 2 OF 2

B 45326 ADD 287-BAT FRAME	RL	8-19-91
A 19032 REDRAWN	CSL	7-19-91
REV. EDD.	DESCRIPTION	BY DATE

FOR F1 OR F2 CONDUIT BOX LOCATION SEE SALES ORDER	PART NUMBER	DWG. SIZE	REV.
	876	A	B

15209



NOTE:
 MATERIAL .005 MINIMUM FULL HARD ALUMINUM DULL FINISH.
 TEMP. RANGE -20°C TO +125°C MAXIMUM.
 FOR INDOOR AND OUTDOOR MOUNTING BACK.
 METAL, PRESSURE SENSITIVE BACK. MUST MEET CSA STANDARD.
 THE CSA IDENTIFYING MARK OF THE LABEL MANUFACTURER MUST APPEAR IN THE UPPER RIGHT HAND CORNER AS INDICATED.

MATL: NOTED			
REV:	G	CHANGE ALL "NAMEPLATE" TEXT TO "LABEL"	
60291	SCALE: -	BY: BKW	REVISED: 02/19/97
	FILE: CHB00002485	TDR: 0115147	

BALDOR ELECTRIC Co.

LABEL, CONNECTIONS AND TERMINAL MARKINGS DC

15209


REL. S. O.	FRAME	RATING	RPM	ARM. VOLTS	ARM. AMPS
	288	25.0HP	1750	240	89.2
WINDING TYPE		S.F.	ENCL.	AMB °C/INSUL	DUTY
STRAIGHT SHUNT		1.0	DRG	40/F	CONT
					300
POWER CODE		TYPE	WK 2 (LB-FT ²)	HOT ARM. CIR. RES.	FLD. AMPS@25 °C
D		T	4.420	.198	2.31
					HOT FIELD RES
					201

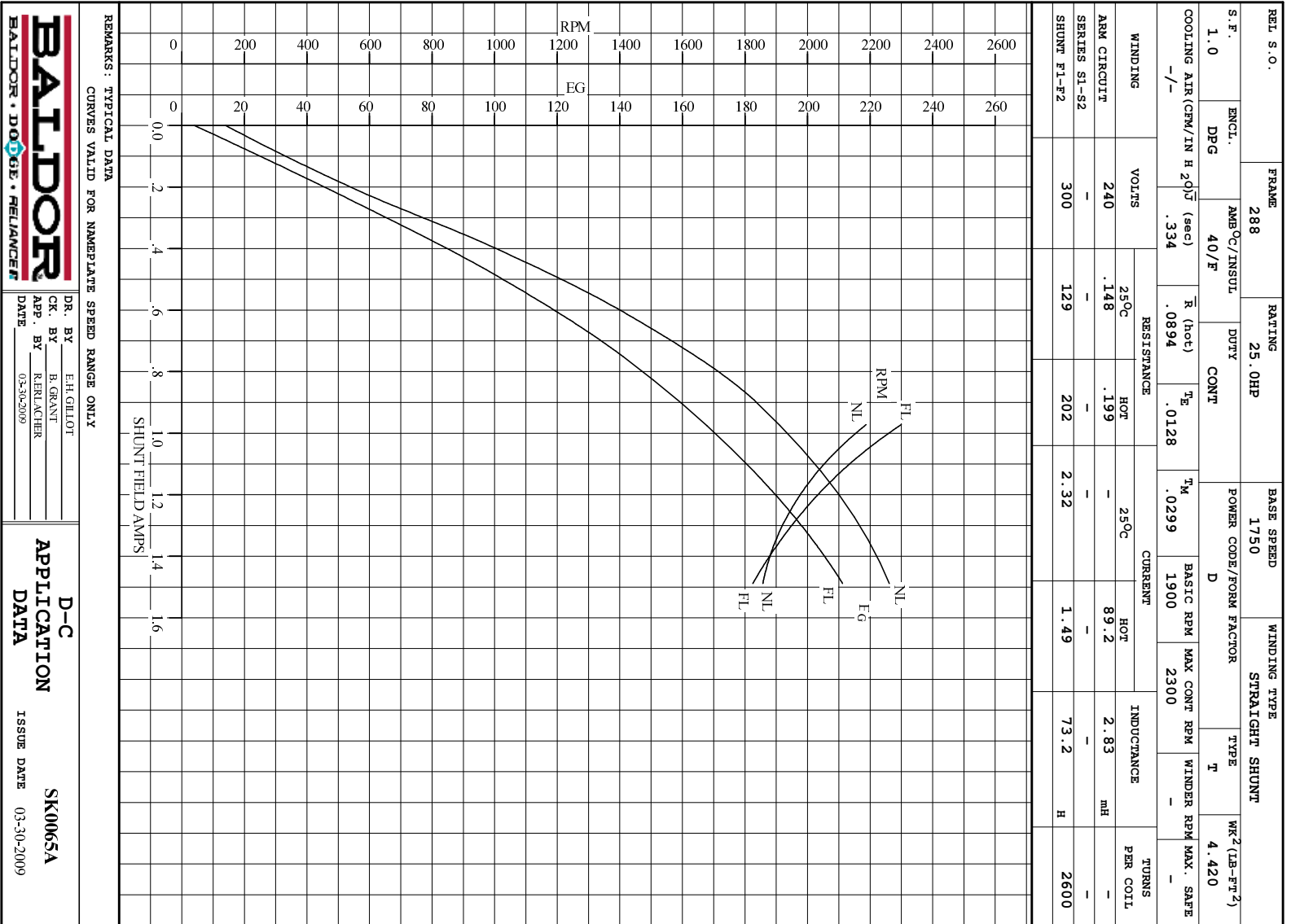
ARM. CIR. IND. (mh)	FIELD IND. (H)	COOLING AIR (CFM/IN H 20)	TURNS PER COIL SHUNT/SERIES	TEST DATE
2.82	73.1	-/-	2600/.00000	-

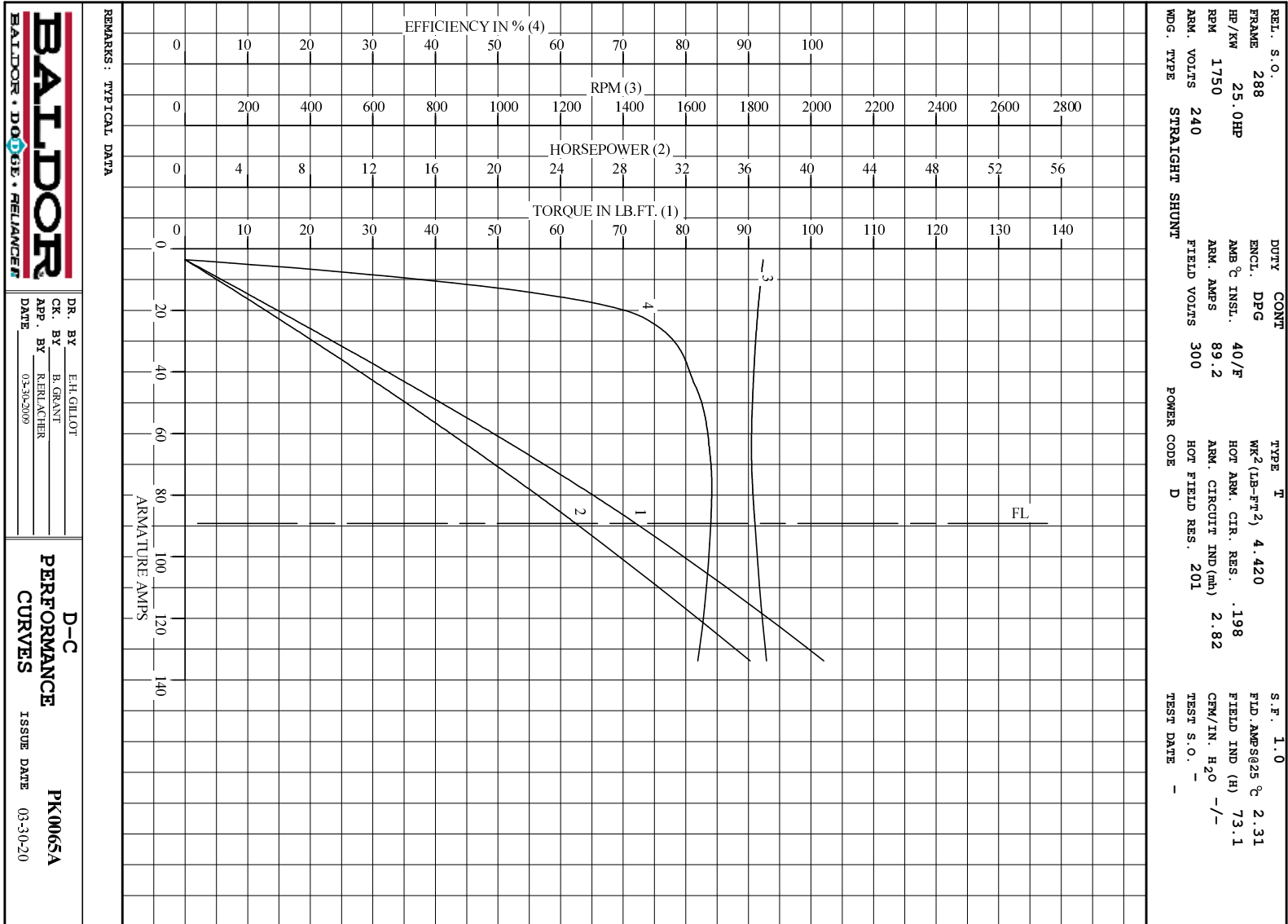
LOAD PERFORMANCE					
LOAD	AMPERES	TORQUE IN LB.-FT.	OUTPUT IN HP	RPM	% EFFICIENCY
NO LOAD	3.5	0	0	1847	0
1/4	22	16.8	5.85	1829	73.2
2/4	45	36.3	12.5	1815	81.5
3/4	67	54.9	18.9	1810	83.9
4/4	89	72.0	25.0	1821	84.0
O.L.	134	102	36.1	1858	81.9

RPM VS. FIELD AMPS			Eg VS. FIELD AMPS	
FIELD AMPS	RPM N.L.	RPM F.L.	Eg N.L. @ BASE SPEED	Eg F.L. @ BASE SPEED
1.48	1847	1820	226	211
1.35	1894	1906	220	202
1.23	1957	2006	213	192
1.10	2052	2133	203	180
.972	2187	2300	191	167

REMARKS: TYPICAL DATA

 BALDOR • DOUG • RELIANCE	DR. BY E. H. GILLOT	D-C MOTOR PERFORMANCE DATA DK0065A ISSUE DATE 03-30-2009
	CK. BY B. GRANT APP. BY R. BRANCHER DATE 03-30-2009	





DR. BY E.H.GILLOT
 CK. BY B.GRANT
 APP. BY R.RERACHER
 DATE 03-30-20

D-C
PERFORMANCE
CURVES
 ISSUE DATE 03-30-20
PK0065A