

BALDOR® • RELIANCE

Product Information Packet

D2025R-BV

25HP, 1750RPM, DC, 2113ATZ, DPG-FV,

Copyright © All product information within this document is subject to Baldor Electric Company copyright © protection, unless otherwise noted.

Part Detail			
Type:	DC	Prod. Type:	TR
Power Code:	D	Weight:	370
Frame Group:	MC 2113ATZ	Mounting Pos.:	F1
HP:	25	Enclosure:	DPFV
RPM:	1750/2300	Wound:	STR. SHUNT
Service Factor:	1.0	Arm V:	240
Arm A:	96.00	Field V:	150
Field A:	8.43	Field A Hot:	5.76/3.75
Insulation Class:	F	Ambient:	40
Duty:	CONT	DE Bearing:	50BC03J30X
ODE Bearing:	45BC02J30X	Brushes:	419904-51AB
Brush Qty.:			

616002-001

INDUSTRIAL DIRECT CURRENT MOTORS AND GENERATORS - RPM III

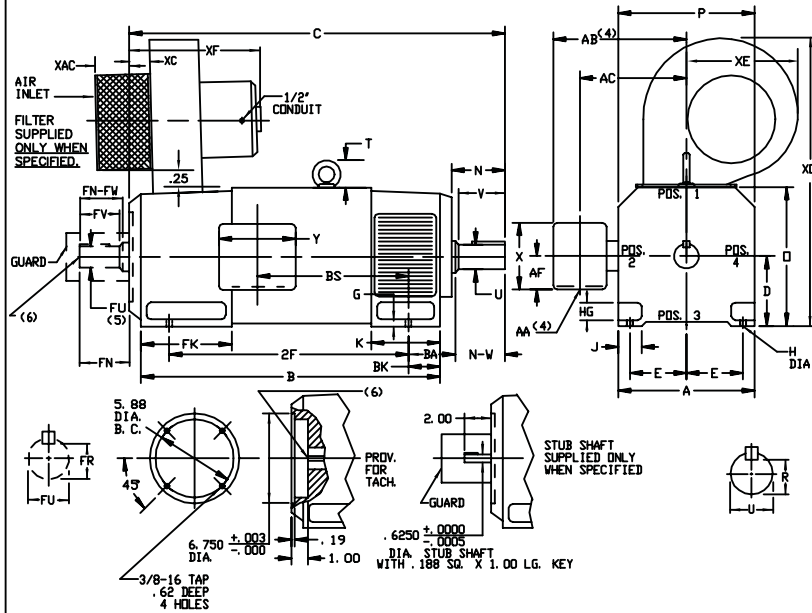
ENCLOSURE: DRIP-PROOF FULLY-GUARDED,
SPLASHPROOF

COOLING: FORCE VENTILATED
WITH INTEGRAL
BLOWER AND MOTOR

MOUNTING: FOOT
METHOD OF DRIVE: COUPLED OR BELTED

ACCESSORIES: PROVISION FOR
TACHOMETER MOUNTING
ONLY WHEN SPECIFIED

FRAMES SC2113ATZ THRU LC2115ATZ

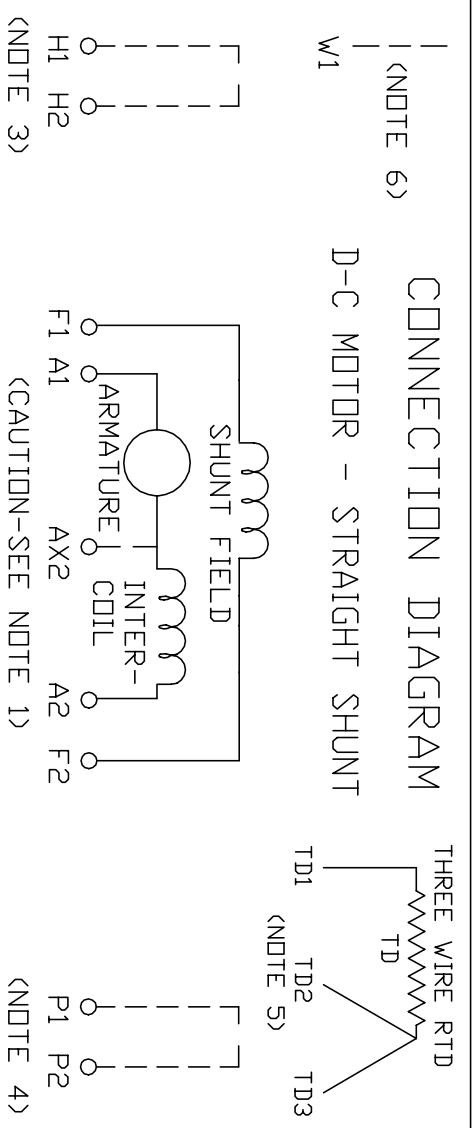


CUSTOMER IS RESPONSIBLE FOR DETERMINING THAT BALDOR'S PRODUCT WILL PERFORM SUITABLY IN THE INTENDED APPLICATION.

REV. DESC: LOADED TO BUS	VERSION: 00	TDR: 000000578087
REV. LTR: -	REVISED: 08:22:49 01/28/2011	BY: CONNAS
FILE: \RGG\00015\944		
MTL: -		

BALDOR
 DIMENSION DRAWING: SC2113ATZ - LC2115ATZ, DPP, FOOT MTG
 SH 1 of 1

616002-001



1. **CAUTION** — ARMATURE MAY HAVE MULTIPLE LEADS. CONNECT ALL LUGS WITH THE SAME MARKING TOGETHER.
2. OPTIONAL CONTROL SIGNAL LEAD IS MARKED AX2. ALWAYS TAKE INTERPOLE DROP BETWEEN A2 AND AX2. NOTE: NEMA DESIGNATION FOR AX2 IS LETTER C.
3. SPACE HEATERS, WHEN PROVIDED, WILL HAVE LEADS MARKED H1 AND H2, H3, H4, ETC.
4. THERMAL PROTECTOR, WHEN PROVIDED, WILL HAVE LEADS MARKED P1 AND P2, P3, P4, ETC.
5. WINDING RTD'S, WHEN PROVIDED, WILL HAVE LEAD MARKED W1.
6. BRUSH WEAR SENSOR, WHEN PROVIDED, WILL HAVE LEAD MARKED W1.
7. **WARNING** — MOTOR MUST BE GROUNDED TO PREVENT SERIOUS INJURIES TO PERSONNEL. GROUND THE MOTOR PER IEC, NATIONAL ELECTRICAL CODE AND ANY APPLICABLE LOCAL ELECTRICAL CODES. A TAPPED HOLE IS PROVIDED IN THE CONDUIT BOX, ON THE FOOT. FRAME BRACE OR OPPOSITE OPPOSITE DRIVE END BRACKET, ADJACENT TO THE TERMINAL BOX FOR FOR MOTOR GROUNDING. GROUND LEAD, WHEN PROVIDED, WILL BE GREEN.

CUSTOMER _____ RELIANCE _____
 ORDER NO. _____ S.O. NO. _____

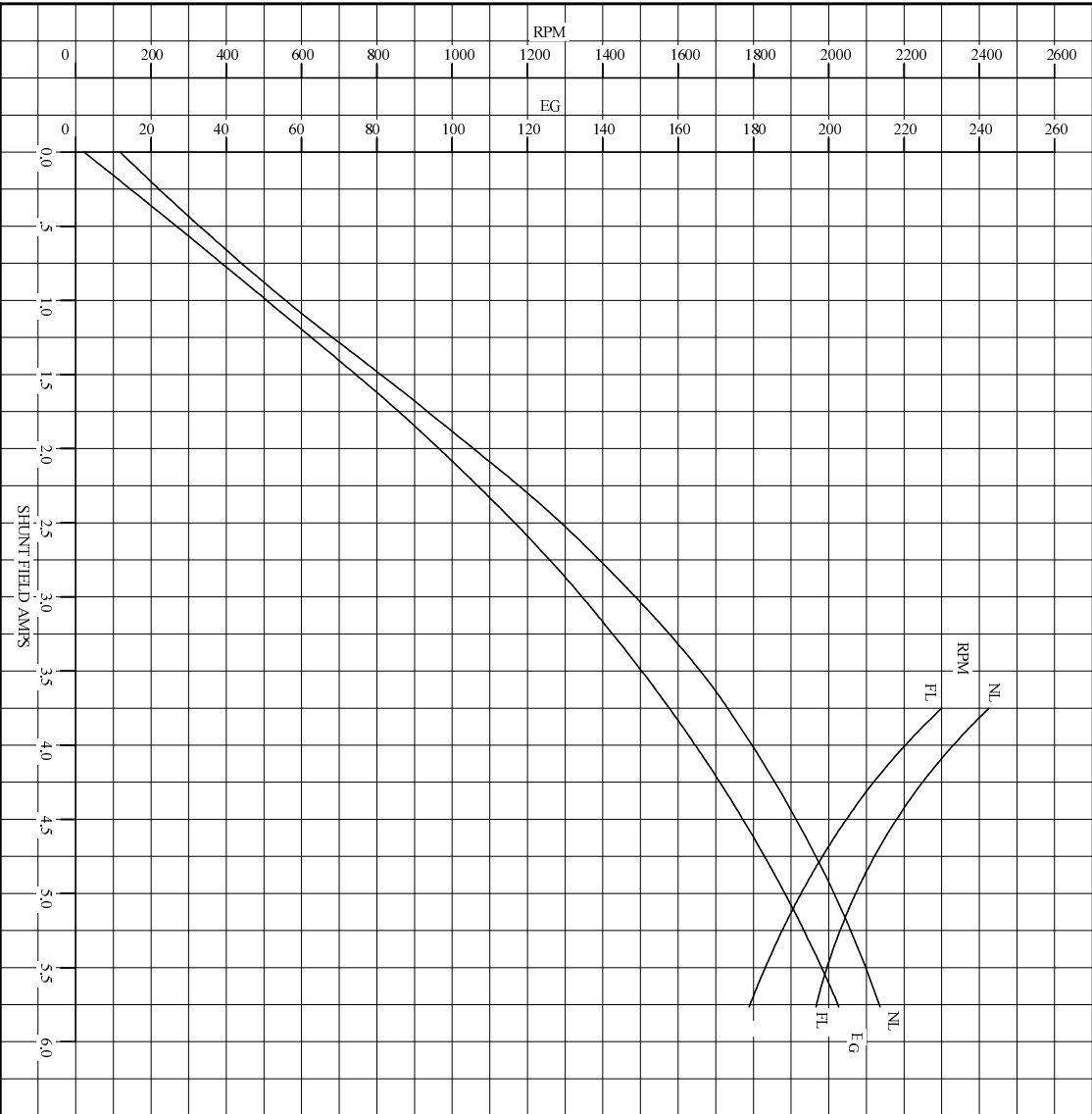
RELIANCE ELECTRIC
 CLEVELAND, OHIO 44117 U.S.A.

REC. BY: N.L. EVANS
 CK. BY: N. JESCHKE
 APP. BY: E. J. HINER
 DATE: 5-5-69

CONNECTION DIAGRAM
406770-6
 ORIGINAL AT RCC

C/R 244907, 290048, 354478, 354480

REF. S.O.	FRAME MC2113ATZ	RATING 25.0HP	BASE SPEED 1750	WINDING TYPE STRAIGHT SHUNT		
S.F.F. 1.0	ENCL. DPEV	AMB°C/INSUL 40/F	DUTY CONT	POWER CODE/FORM FACTOR D		
COOLING AIR (CFM/IN H ₂ O) 300/2.25	̄ (sec) .194	̄ (hot) .158	T _e .00869	T _m .0307		
				BASIC RPM 1950		
				MAX CONT RPM 2300		
				WINDER RPM -		
				MAX. SAFE 4500		
WINDING	VOLTS	RESISTANCE		CURRENT	INDUCTANCE	TURNS PER COIL
ARM CIRCUIT	240	25°C .215	HOT .315	25°C 96.0	2.97	mH
SERIES S1-F2	-	-	-	-	-	-
SHUNT F1-F2	150	17.8	26.0	8.43	5.76	1.97
						H
						425



REMARKS: TYPICAL DATA SPEED REGULATOR REQUIRED FOR STABILITY
CURVES VALID FOR NAMEPLATE SPEED RANGE ONLY

	DR. BY	R. REILACHER	D-C APPLICATION DATA	SG6413B ISSUE DATE 12-22-94
	CK. BY	R. REILACHER		
	APP. BY	T. SIMON		
	DATE	11-20-86		

C/R


REL S.O.	FRAME	RATING	RPM	ARM. VOLTS	ARM. AMPS
	MC2113ATZ	25.0HP	1750	240	96.0
WINDING TYPE	S.F.	ENCL.	AMB °C/INSUL	DUTY	FIELD VOLTS
STRAIGHT SHUNT	1.0	DPFV	40/F	CONT	150
POWER CODE	TYPE	WK 2 (LB-FT ²)	HOT ARM. CIR. RES.	FLD. AMPS@25 °C	HOT FIELD RES
D	TR	2.564	.314	8.43	26.0

ARM. CIR. IND. (mh)	FIELD IND. (H)	COOLING AIR (CFM/IN H 20)	TURNS PER COIL SHUNT/SERIES	TEST DATE
2.96	1.96	300/2.25	425/.00000	-

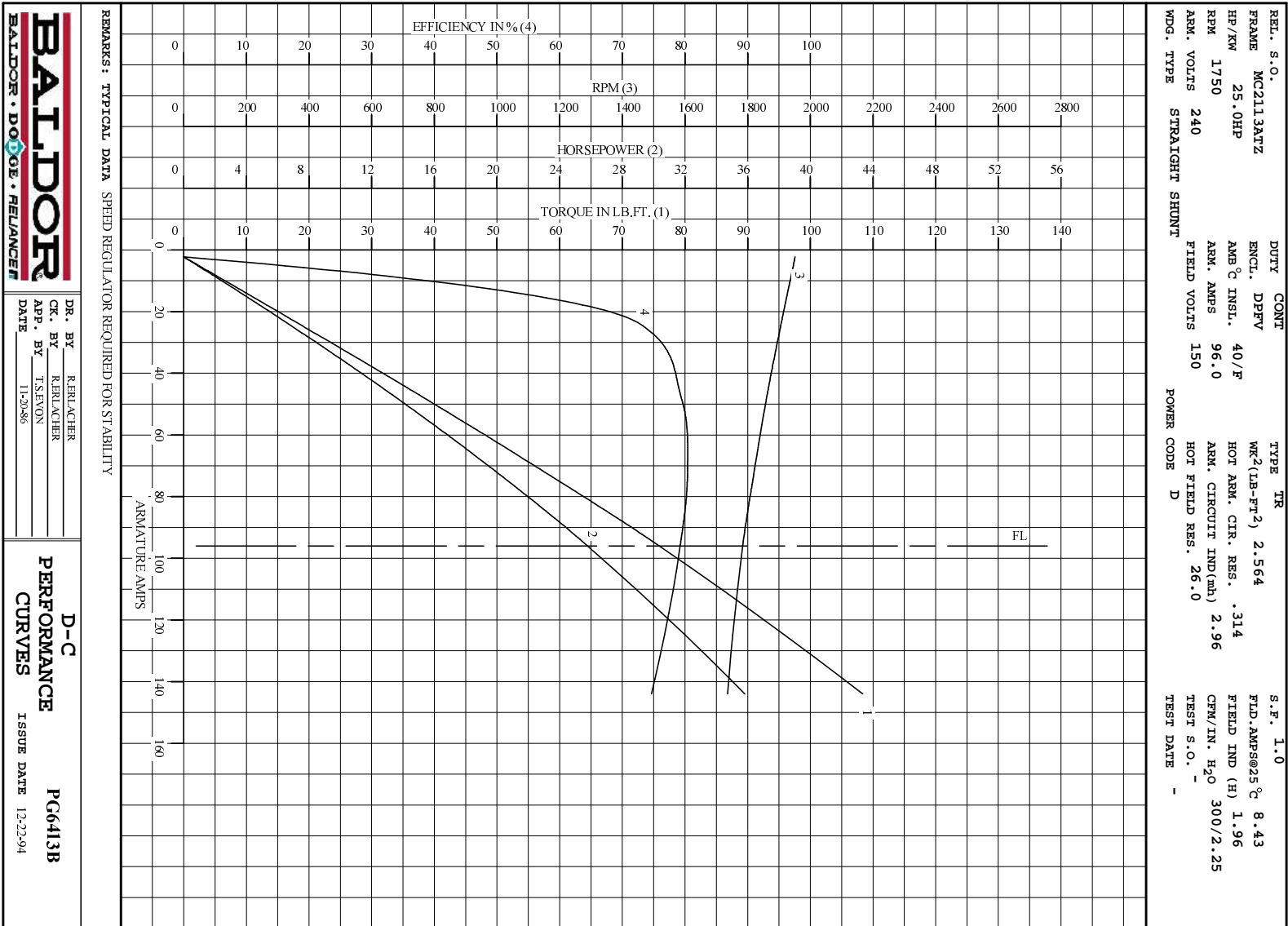
LOAD PERFORMANCE					
LOAD	AMPERES	TORQUE IN LB.-FT.	OUTPUT IN HP	RPM	% EFFICIENCY
NO LOAD	2.3	0	0	1952	0
1/4	24	18.4	6.69	1907	72.8
2/4	48	38.4	13.6	1860	79.4
3/4	72	57.6	20.0	1821	80.4
4/4	96	75.9	25.8	1784	79.2
O.L.	144	108	35.8	1736	74.6

RPM VS. FIELD AMPS			Eg VS. FIELD AMPS		
FIELD AMPS	RPM N.L.	RPM F.L.	Eg N.L. @ BASE SPEED	Eg F.L. @ BASE SPEED	
5.76	1951	1784	213	202	
5.26	2028	1874	205	193	
4.75	2119	1981	196	183	
4.25	2247	2117	186	171	
3.75	2425	2300	173	157	

REMARKS: TYPICAL DATA
 MAXIMUM SAFE SPEED = 4500 RPM
 SPEED REGULATOR REQUIRED FOR STABILITY

	DR. BY R. BRILACHER	D-C MOTOR PERFORMANCE DATA DG6413B ISSUE DATE 12-22-94
	CK. BY R. BRILACHER APP. BY T.S. EVON DATE 11-20-86	

C/R -



C/R



DR. BY RREILACHER
 CK. BY RREILACHER
 APP. BY T.S.MON
 DATE 11-20-86

D-C
PERFORMANCE
CURVES

PG6413B
 ISSUE DATE 12-22-94