

BALDOR® • ***RELIANCE***

Product Information Packet

D2030P

30HP/1750-2300RPM/DC/DPFG/288AT

Copyright © All product information within this document is subject to Baldor Electric Company copyright © protection, unless otherwise noted.

Part Detail			
Type:	DC	Prod. Type:	TR
Power Code:	D	Weight:	595
Frame Group:	0288AT	Mounting Pos.:	F1
HP:	30	Enclosure:	DPFG
RPM:	1750/2300	Wound:	STR. SHUNT
Service Factor:	1.0	Arm V:	240
Arm A:	106.00	Field V:	150/ 300
Field A:	4.64/2.32	Field A Hot:	2.98-2.06/1.49-
Insulation Class:	F	Ambient:	40
Duty:	CONT	DE Bearing:	6210
ODE Bearing:	6209	Brushes:	28610-1
Brush Qty.:			

CUSTOMER NAME		MODEL NO.		MTG.		REMARKS:	
CUSTOMER P.O.		FRAME		R.P.M.		PHASE	
CERTIFIED BY		H.P.		TYPE		INSUL.	
DATE		VOLTS		ENCL.		FREQ.	
						SHEET 2 OF 2	
UNITS:		SCALE:		PROPORTION:		PART NUMBER	
INCH		NONE		NONE		876	
						DWG. SIZE	
						A	

1/2-13UNC-2B THD X 1.00 DEEP
4-HOLES EQUALLY SPACED
ON A 7.250 DIA. B.C.

3/8-16 UNC-2B THD'S
.88 DEEP IN SHAFT END

ACCESSORY 'C' FACE

STANDARD COMM END
FOR SINGLE SHAFT EXTENSION

FRAME	FOOT MOUNTING				D.E. SHAFT EXTENSION				DRIVE KEY				ACC KEY				FRAME								
	BA	E	ZF	G	H	J	N	N-W	U	V	W	KEY-50	KEY-LONG	FN	FU	FV	KEY-50	KEY-LONG	A	B	C	FC	D	O	P
287AT	4.75	5.50	12.50	.69	.531	2.50	3.91	3.75	1.875	3.50 ³	.16	.500	2.50	3.44	1.625	3.19	.375	2.44	13.81	14.13	31.00	33.71	7.00 ²	13.88	13.75
287-BAT	4.75	5.50	12.50 & 14.00	.69	.531	2.50	3.91	3.75	1.875	3.50 ³	.16	.500	2.50	3.44	1.625	3.19	.375	2.44	13.81	15.62	31.00	33.71	7.00 ²	13.88	13.75
288AT	4.75	5.50	14.00	.69	.531	2.50	3.91	3.75	1.875	3.50 ³	.16	.500	2.50	3.44	1.625	3.19	.375	2.44	13.81	15.62	32.75	35.46	7.00 ²	13.88	13.75
2810AT	4.75	5.50	16.00	.69	.531	2.50	3.91	3.75	1.875	3.50 ³	.16	.500	2.50	3.44	1.625	3.19	.375	2.44	13.81	16.62	36.75	39.46	7.00 ²	13.88	13.75
2811AT	4.75	5.50	20.00	.69	.531	2.50	3.91	3.75	1.875	3.50 ³	.16	.500	2.50	3.44	1.625	3.19	.375	2.44	13.81	21.62	40.68	43.64	7.00 ²	13.88	13.75
2813AT	4.75	5.50	25.00	.69	.531	2.50	3.91	3.75	1.875	3.50 ³	.16	.500	2.50	3.44	1.625	3.19	.375	2.44	13.81	26.62	44.62	47.84	7.00 ²	13.88	13.75

FRAME	CONDUIT BOX				AIR APPROX. LB'S/FT ³	APPROXIMATE WEIGHT			
	AA	AB	AC	AF					
287AT	1 1/4	11.88	9.25	5.00	10.89	7.88	5.25	4.67	506 ⁵
287-BAT	1 1/4	11.88	9.25	5.00	10.89	7.88	5.25	4.67	506 ⁵
288AT	1 1/4	11.88	9.25	5.00	12.64	7.88	5.25	5.36	566 ⁵
2810AT	1 1/4	11.88	9.25	5.00	16.64	7.88	5.25	6.80	726 ⁵
2811AT	1 1/4	11.88	9.25	5.00	19.14	7.88	5.25	7.62	791 ⁵
2813AT	1 1/4	11.88	9.25	5.00	23.64	7.88	5.25	9.40	796 ⁵

1) SHAFT DIAMETERS TO 1.500 TOLERANCE +.0000 - .0005
SHAFT DIAMETERS ABOVE 1.500 TOLERANCE +.0000 - .0010
SHAFT DIAMETERS ABOVE 1.625 RUNOUT .002 T.I.R. MAX.
SHAFT DIAMETERS ABOVE 1.625 RUNOUT .003 T.I.R. MAX.

2) 'D' DIMENSION TOLERANCE +.000 - .060

3) 'V' DIMENSION IS MAX. HUB LENGTH ON SHAFT

4) CONDUIT BOX CAN BE ROTATED IN 90° STEPS ON ITS OWN AXIS.

5) TOTAL WEIGHT OF MOTOR.

6) ALL DIMENSIONS NOT NOTED ARE NOMINAL DIMENSIONS CONSULT FACTORY FOR TOLERANCES.

B 45326 ADD 287-BAT FRAME	RL	8-19-91	
A 19032 REDRAWN	CSL	7-19-91	
REV. EDD.	DESCRIPTION	BY	DATE

DESIGNER
CSL
7-19-91

ENGINEER
REL
7-19-91

ENGINEER
DAC
7-19-91

MANUF.
RWJ

BALDOR

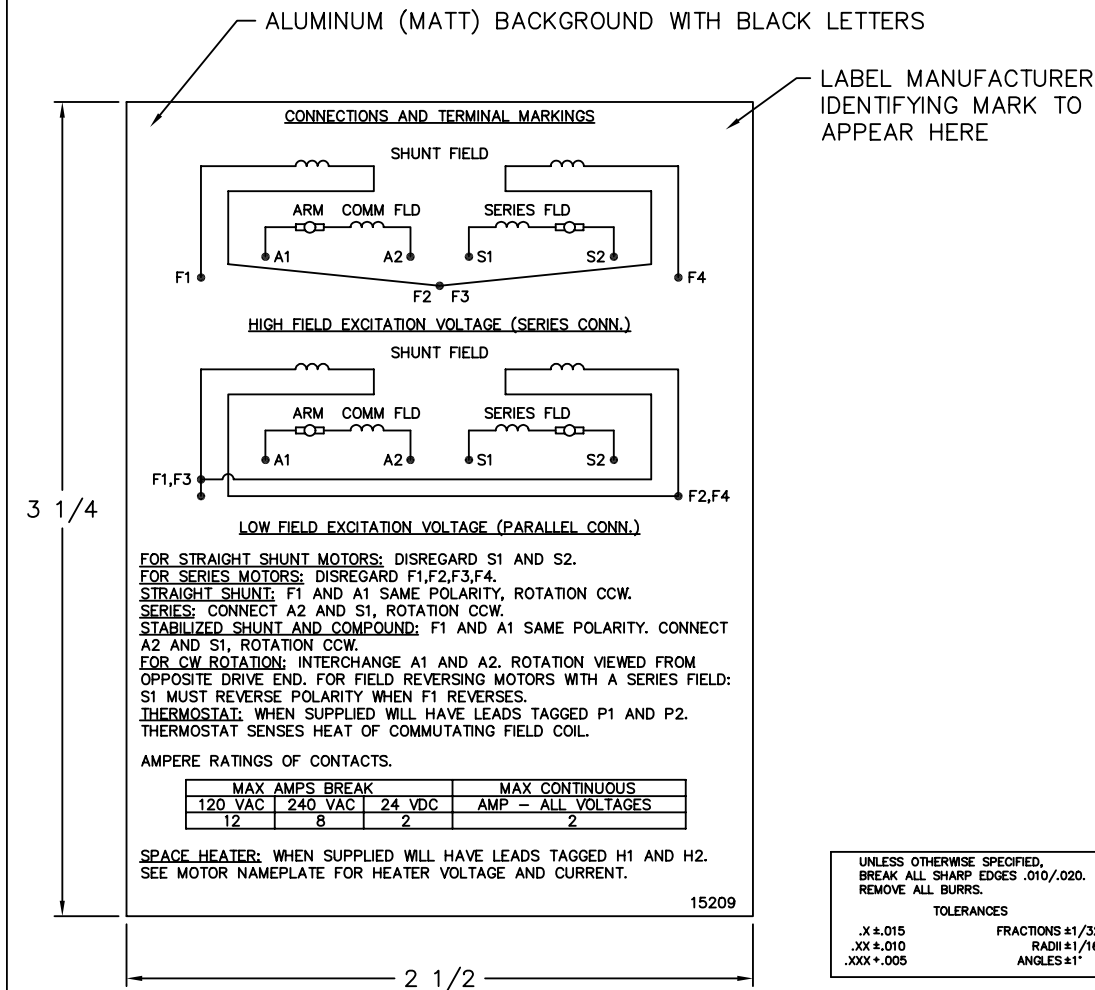
TITLE: DIMENSION SHEET
DPFG, STD AT

SHEET 2 OF 2

FOR F1 OR F2 CONDUIT BOX
LOCATION SEE SALES ORDER

REV	EDD.	DESCRIPTION	BY	DATE	PART NUMBER	DWG. SIZE	REV.
					876	A	B

15209



NOTE:
 MATERIAL .005 MINIMUM FULL HARD ALUMINUM DULL FINISH.
 TEMP. RANGE -20°C TO +125°C MAXIMUM.
 FOR INDOOR AND OUTDOOR MOUNTING BACK.
 METAL, PRESSURE SENSITIVE BACK. MUST MEET CSA STANDARD.
 THE CSA IDENTIFYING MARK OF THE LABEL MANUFACTURER MUST APPEAR IN THE UPPER RIGHT HAND CORNER AS INDICATED.

MATL: NOTED			
REV:	G	CHANGE ALL "NAMEPLATE" TEXT TO "LABEL"	
60291	SCALE: -	BY: BKW	REVISED: 02/19/97
	FILE: CHB00002485	TDR: 0115147	

BALDOR ELECTRIC Co.

LABEL, CONNECTIONS AND TERMINAL MARKINGS DC

15209


REL. S. O.	FRAME	RATING	RPM	ARM. VOLTS	ARM. AMPS	
	288	30.0HP	1750	240	106	
WINDING TYPE		S. F.	ENCL.	AMB °C/INSUL	DUTY	FIELD VOLTS
STRAIGHT SHUNT		1.0	DPG	40/F	CONT	300
POWER CODE	TYPE	WK 2 (LB-FT ²)	HOT ARM. CIR. RES.	FLD. AMPS@25 °C	HOT FIELD RES	
D	TR	4.420	.180	2.31	201	

ARM. CIR. IND. (mh)	FIELD IND. (H)	COOLING AIR (CFM/IN H 20)	TURNS PER COIL SHUNT/SERIES	TEST DATE
2.82	74.0	-/-	2600/0	-

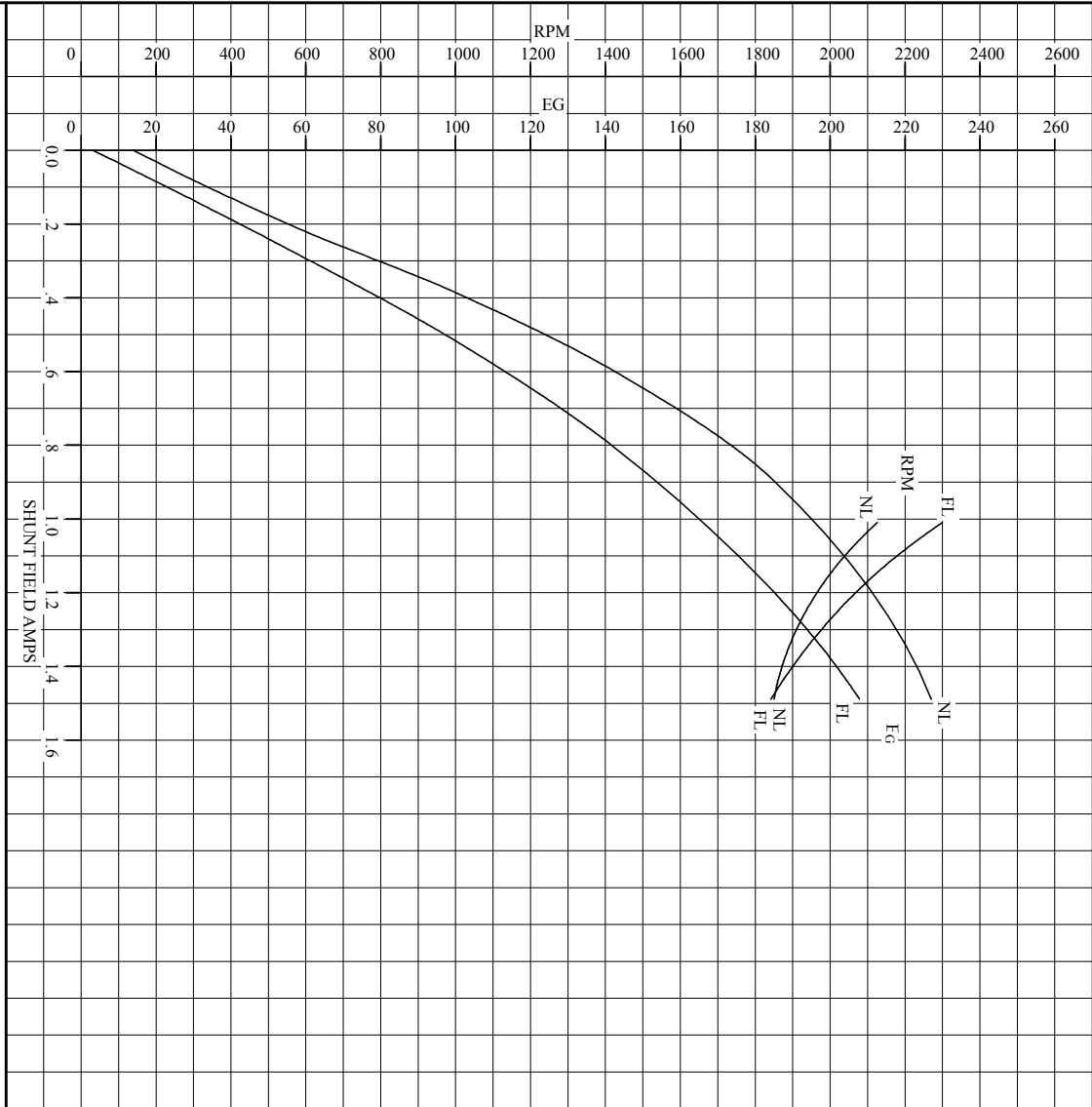
LOAD PERFORMANCE					
LOAD	AMPERES	TORQUE IN LB.-FT.	OUTPUT IN HP	RPM	% EFFICIENCY
NO LOAD	3.5	0	0	1840	0
1/4	27	20.6	7.15	1821	76.3
2/4	53	43.8	15.1	1807	83.3
3/4	80	65.2	22.6	1818	84.8
4/4	106	85.0	29.6	1833	84.4
O.L.	159	117	42.6	1908	81.6

RPM VS. FIELD AMPS			Eg VS. FIELD AMPS	
FIELD AMPS	RPM N. L.	RPM F. L.	Eg N. L. @ BASE SPEED	Eg F. L. @ BASE SPEED
1.48	1830	1830	226	207
1.36	1880	1920	221	199
1.24	1930	2020	215	189
1.12	2010	2140	207	178
1.00	2120	2300	196	166

REMARKS: TYPICAL DATA

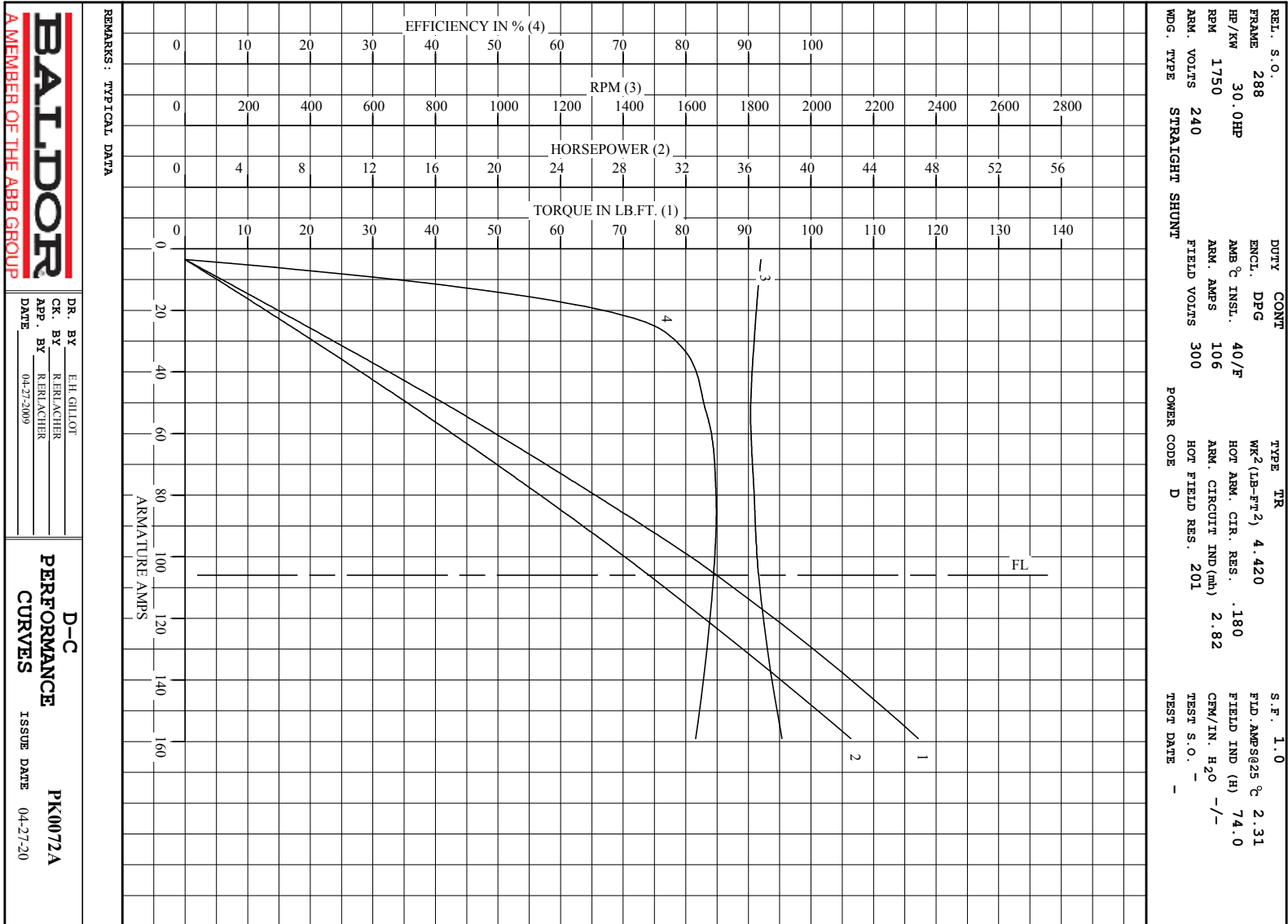
 A MEMBER OF THE ABB GROUP	DR. BY E. H. GILLOT	D-C MOTOR PERFORMANCE DATA DK0072A ISSUE DATE 04-27-2009
	CK. BY R. BRANCHER	
	APP. BY R. BRANCHER DATE 04-27-2009	

REL. S.O.	FRAME	288	RATING	30.0HP	BASE SPEED	1750	WINDING TYPE	STRAIGHT SHUNT
S.F. 1.0	ENCL. DPG	AMB°C/INSUL 40/F	DUTY CONT		POWER CODE/FORM FACTOR	D	TYPE	TR
COOLING AIR (CFM/IN H ² O)		R (hot)	T _e	T _m	BASIC RPM	MAX CONT RPM	WINDER RPM	MAX. SAFE
-/-		.278	.0971	.0141	1950	2300	-	4.420
WINDING	VOLTS	RESISTANCE			CURRENT		INDUCTANCE	TURNS PER COIL
ARM CIRCUIT	240	25°C	HOT	25°C	HOT			
SERIES S1-S2	-	.124	.180	-	1.06	2.83	mH	-
SHUNT F1-F2	300	-	-	-	1.49	74.1	H	2600



REMARKS: TYPICAL DATA
CURVES VALID FOR NAMEPLATE SPEED RANGE ONLY

BALDOR A MEMBER OF THE ABB GROUP	DR. BY	EH GILLOT	D-C APPLICATION DATA SK0072A ISSUE DATE 04-27-2009
	CK. BY	RERLACHER	
	APP. BY	RERLACHER	
	DATE	04-27-2009	



BALDOR
A MEMBER OF THE ABB GROUP

DR. BY E.H. GILLOT
 CK. BY R.ERLACHER
 App. BY R.ERLACHER
 DATE 04-27-2000

D-C
PERFORMANCE
CURVES
 ISSUE DATE 04-27-20
PK0072A