

BALDOR® • **RELIANCE**

Product Information Packet

D2040P-BV

40HP, 1750/2100RPM, DC, 328AT, DPBV, F1

Copyright © All product information within this document is subject to Baldor Electric Company copyright © protection, unless otherwise noted.

Part Detail			
Type:	DC	Prod. Type:	TR
Power Code:	D	Weight:	855
Frame Group:	0328AT	Mounting Pos.:	F1
HP:	40	Enclosure:	DPBV
RPM:	1750/2100	Wound:	STR. SHUNT
Service Factor:	1.0	Arm V:	240
Arm A:	138.00	Field V:	300
Field A:	2.06	Field A Hot:	1.32-2.00/2.17-
Insulation Class:	F	Ambient:	40
Duty:	CONT	DE Bearing:	6211
ODE Bearing:	6210	Brushes:	28610-1
Brush Qty.:			

1336-4

1/2-13UNC-2B THD X 1.00 DEEP, 4-HOLES EQUALLY SPACED ON A 7.250 DIA. B.C.

3/8-16 UNC-2B THD'S .88 DEEP IN SHAFT END

1.1245
1.1250 DIA.

.40
.19 ACCESSORY 'C' FACE

STANDARD COMM END FOR SINGLE SHAFT EXTENSION

STANDARD TACHOMETER MOUNTINGS

TACH	XR	LBS	FIG #
XPY	9.00	6.00	1
DPY	6.91	3.00	2
NCS	3.25	7.00	3
AC	2.77	7.00	3
XC42	12.49	25.00	4
XC46	14.50	35.00	4
XPYII	6.89	15.00	5

XC TACH MOUNTING KIT

XPY TACH MOUNTING KIT

COUPLING FOR .313 DIA. SHAFT

1/4-20 UNC-2B THDS, 4-HOLES EQ. SPACED @ 90° ON A 3.975 DIA. B.C. (REF.)

FRAME	FOOT MOUNTING										D.E. SHAFT EXTENSION					DRIVE KEY		ACC SHAFT EXTENSION		ACC KEY		FRAME					
	BA	E	2F	G	H	J	N	N-W	U	V	W	KEY-SQ.	KEY-LONG	FN	FV	KEY-SQ.	KEY-LONG	A	B	C	D	O	P				
327AT	5.25	6.25	14.00	.81	.656	3.00	4.40	4.25	2.125	4.00 ³	.15	.500	3.12	3.94	1.875	3.69	.500	2.81	15.88	15.75	32.75	8.00 ²	15.94	15.88			
328AT	5.25	6.25	16.00	.81	.656	3.00	4.40	4.25	2.125	4.00 ³	.15	.500	3.12	3.94	1.875	3.69	.500	2.81	15.88	17.75	34.63	8.00 ²	15.94	15.88			
329AT	5.25	6.25	18.00	.81	.656	3.00	4.40	4.25	2.125	4.00 ³	.15	.500	3.12	3.94	1.875	3.69	.500	2.81	15.88	19.75	36.63	8.00 ²	15.94	15.88			
365AT	5.88	7.00	12.25	.81	.813	3.25	4.94	4.75	2.375	4.50 ³	.19	.625	3.50	4.62	2.125	4.37	.500	3.13	17.75	13.75	32.94	9.00 ²	17.94	17.88			
366AT	5.88	7.00	14.00	.81	.813	3.25	4.94	4.75	2.375	4.50 ³	.19	.625	3.50	4.62	2.125	4.37	.500	3.13	17.75	15.50	35.13	9.00 ²	17.94	17.88			
368AT	5.88	7.00	18.00	.81	.813	3.25	4.94	4.75	2.375	4.50 ³	.19	.625	3.50	4.62	2.125	4.37	.500	3.13	17.75	19.50	38.13	9.00 ²	17.94	17.88			
3610AT	5.88	7.00	22.00	.81	.813	3.25	4.94	4.75	2.375	4.50 ³	.19	.625	3.50	4.62	2.125	4.37	.500	3.13	17.75	23.50	41.45	9.00 ²	17.94	17.88			
3612AT	5.88	7.00	28.00	.81	.813	3.25	4.94	4.75	2.375	4.50 ³	.19	.625	3.50	4.62	2.125	4.37	.500	3.13	17.75	29.50	45.56	9.00 ²	17.94	17.88			

FRAME	CONDUIT BOX						BLOWER										ARM APPROX. WT. LBS.FT. ²	APPROXIMATE WEIGHT
	AA	AB	AC	AF	BS	XL	SIZE	XB	XD	XE	XH	XM	XJ	XK	XS			
327AT	2	12.94	10.32	5.00	11.81	7.88	LM6	19.13	26.38	17.38	10.25	4.19	9.44	11.50	3.75	8.45	738 ⁵	
328AT	2	12.94	10.32	5.00	13.68	7.88	LM6	19.13	26.38	17.38	10.25	4.19	9.44	11.50	3.75	9.67	813 ⁵	
329AT	2	12.94	10.32	5.00	15.68	7.88	LM6	19.13	26.38	17.38	10.25	4.19	9.44	11.50	3.75	10.97	922 ⁵	
365AT	2 1/2	14.06	11.38	5.00	9.06	7.88	LM6	18.88	26.38	18.44	10.25	5.69	10.95	11.50	3.75	15.61	803 ⁵	
366AT	2 1/2	14.06	11.38	5.00	11.25	7.88	LM6	18.88	26.38	18.44	10.25	5.69	10.95	11.50	3.75	18.27	913 ⁵	
368AT	2 1/2	14.06	11.38	5.00	14.25	7.88	LM6	18.88	26.38	18.44	10.25	5.69	10.95	11.50	3.75	22.21	1073 ⁵	
3610AT	3	16.86	13.09	6.53	18.25	11.63	LM9	25.50	28.31	20.94	10.75	5.50	12.38	15.25	3.75	28.00	1109 ⁵	
3612AT	3	16.86	13.09	6.53	24.25	11.63	LM9	25.50	28.31	20.94	10.75	5.50	12.38	15.25	3.75	31.60	1145 ⁵	

1) SHAFT DIAMETERS TO 1.500 TOLERANCE +.0000 -.0005
SHAFT DIAMETERS ABOVE 1.500 TOLERANCE +.0000 -.0010
SHAFT DIAMETERS TO 1.625 RUNOUT .002 T.I.R. MAX.
SHAFT DIAMETERS ABOVE 1.625 RUNOUT .003 T.I.R. MAX.

2) 'D' DIMENSION TOLERANCE +.000 -.060

3) 'V' DIMENSION IS MAX. HUB LENGTH ON SHAFT

4) CONDUIT BOX CAN BE ROTATED IN 90° STEPS ON ITS OWN AXIS.

5) TOTAL WEIGHT OF MOTOR AND BLOWER LESS TACH WEIGHT.

6) ALL DIMENSIONS NOT NOTED ARE NOMINAL DIMENSIONS CONSULT FACTORY FOR TOLERANCES.

FOR F1 OR F2 CONDUIT BOX LOCATION SEE SALES ORDER

CUSTOMER IS RESPONSIBLE FOR DETERMINING THAT BALDOR'S PRODUCT WILL PERFORM SUITABLY IN THE INTENDED APPLICATION.

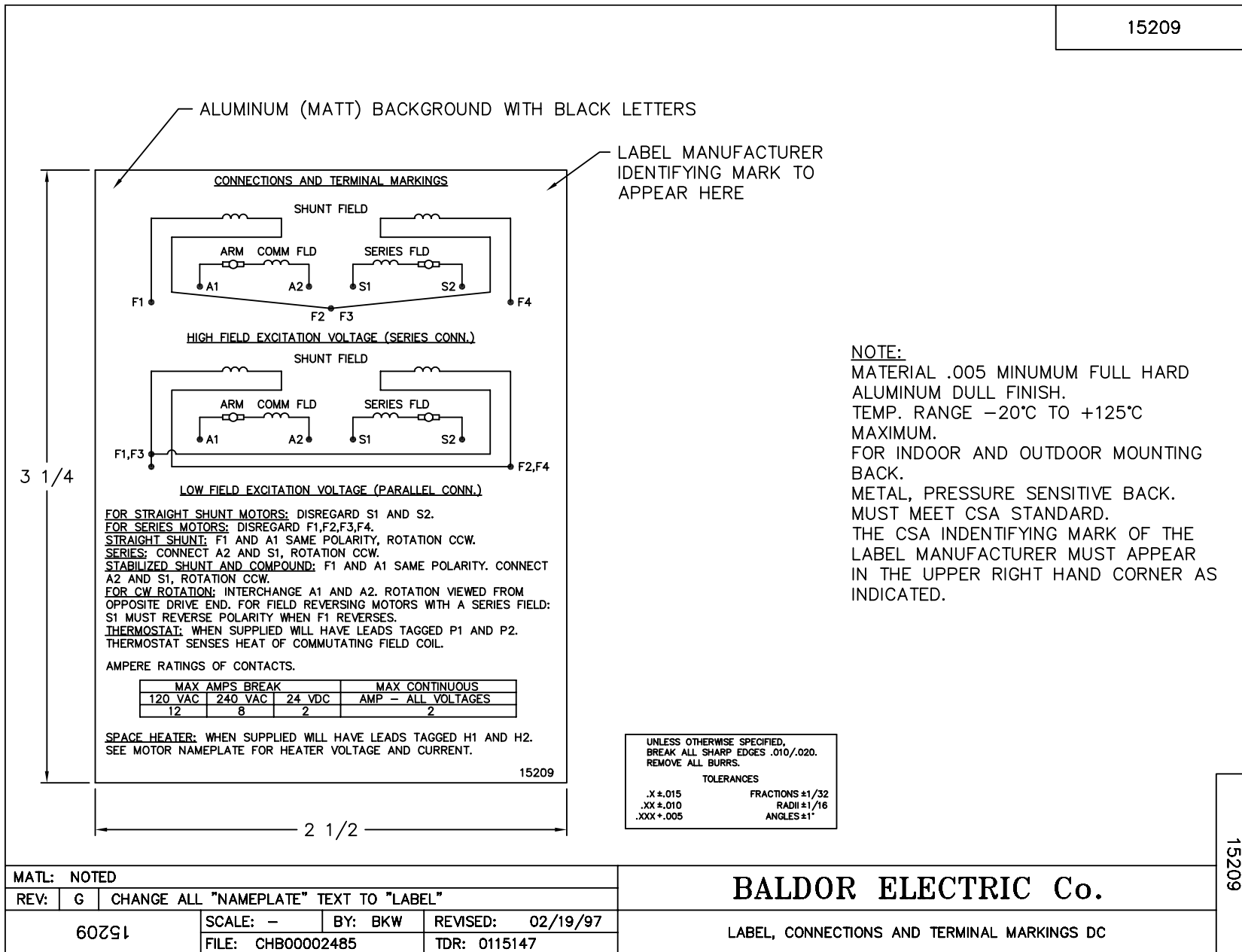
REV. DESC: REV. "D" DIM TO +.000 -.060 ONLY	VERSION: 01	TDR: 000000752448
REV. LTR: G	FILE: \RGG\00019\490	REVISED: 01:55:17 06/19/2012
MTL: -	BY: RGGNAS	

BALDOR

DIM SHEET: 327-3612AT,DPBV,W/TACH
SH 1 of 1

1336-4

15209



REL. S. O.	FRAME	RATING	RPM	ARM. VOLTS	ARM. AMPS
	0328	40.0HP	1750	240	138
WINDING TYPE		S.F.	ENCL.	AMB °C/INSUL	DUTY
STRAIGHT SHUNT		1.0	DRG	40/F	CONT
					300
POWER CODE	TYPE	WK 2 (LB-FT ²)	HOT ARM. CIR. RES.	FLD. AMPS@25 °C	HOT FIELD RES
D	TR	7.377	.117	2.06	226

ARM. CIR. IND. (mh)	FIELD IND. (H)	COOLING AIR (CFM/IN H 20)	TURNS PER COIL SHUNT/SERIES	TEST DATE
2.30	128	-/-	2600/.00000	-

LOAD PERFORMANCE

LOAD	AMPERES	TORQUE IN LB.-FT.	OUTPUT IN HP	RPM	EFFICIENCY %
NO LOAD	5.8	0	0	1787	0
1/4	35	26.7	8.99	1766	75.1
2/4	69	58.4	19.4	1744	83.3
3/4	104	89.0	29.3	1732	85.3
4/4	138	117	38.8	1736	85.3
O.L.	207	167	56.2	1771	83.1

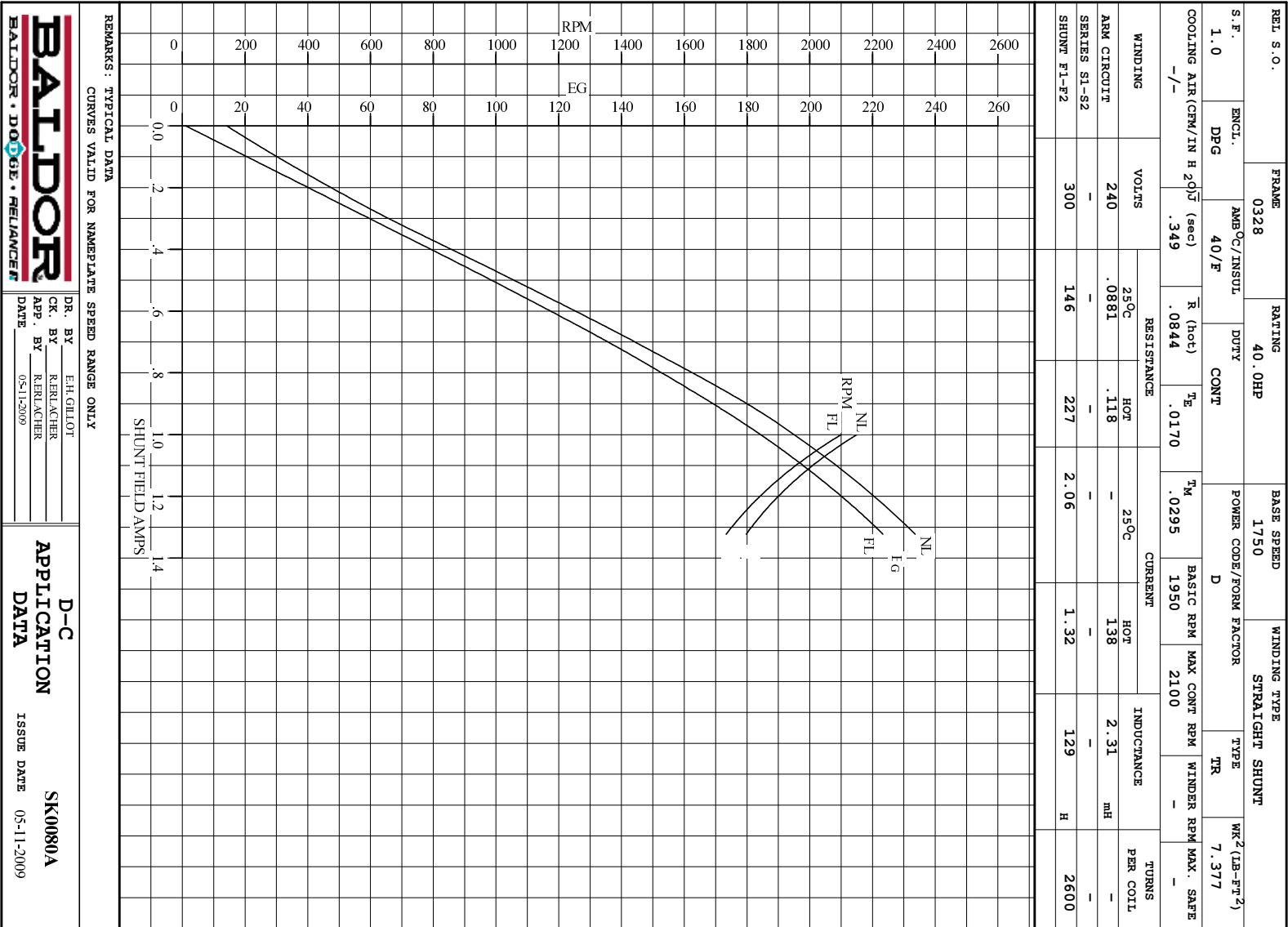
RPM VS. FIELD AMPS

Eg VS. FIELD AMPS

FIELD AMPS	RPM N.L.	RPM F.L.	Eg N.L. @ BASE SPEED	Eg F.L. @ BASE SPEED
1.32	1787	1735	233	223
1.24	1861	1801	225	215
1.16	1939	1882	217	205
1.08	2033	1981	206	195
1.00	2150	2100	195	184

REMARKS: TYPICAL DATA

	DR. BY E. H. GILLOT	D-C MOTOR PERFORMANCE DATA DK0080A ISSUE DATE 05-11-2009
	CK. BY R. BRÄNCHER APP. BY R. BRÄNCHER DATE 05-11-2009	

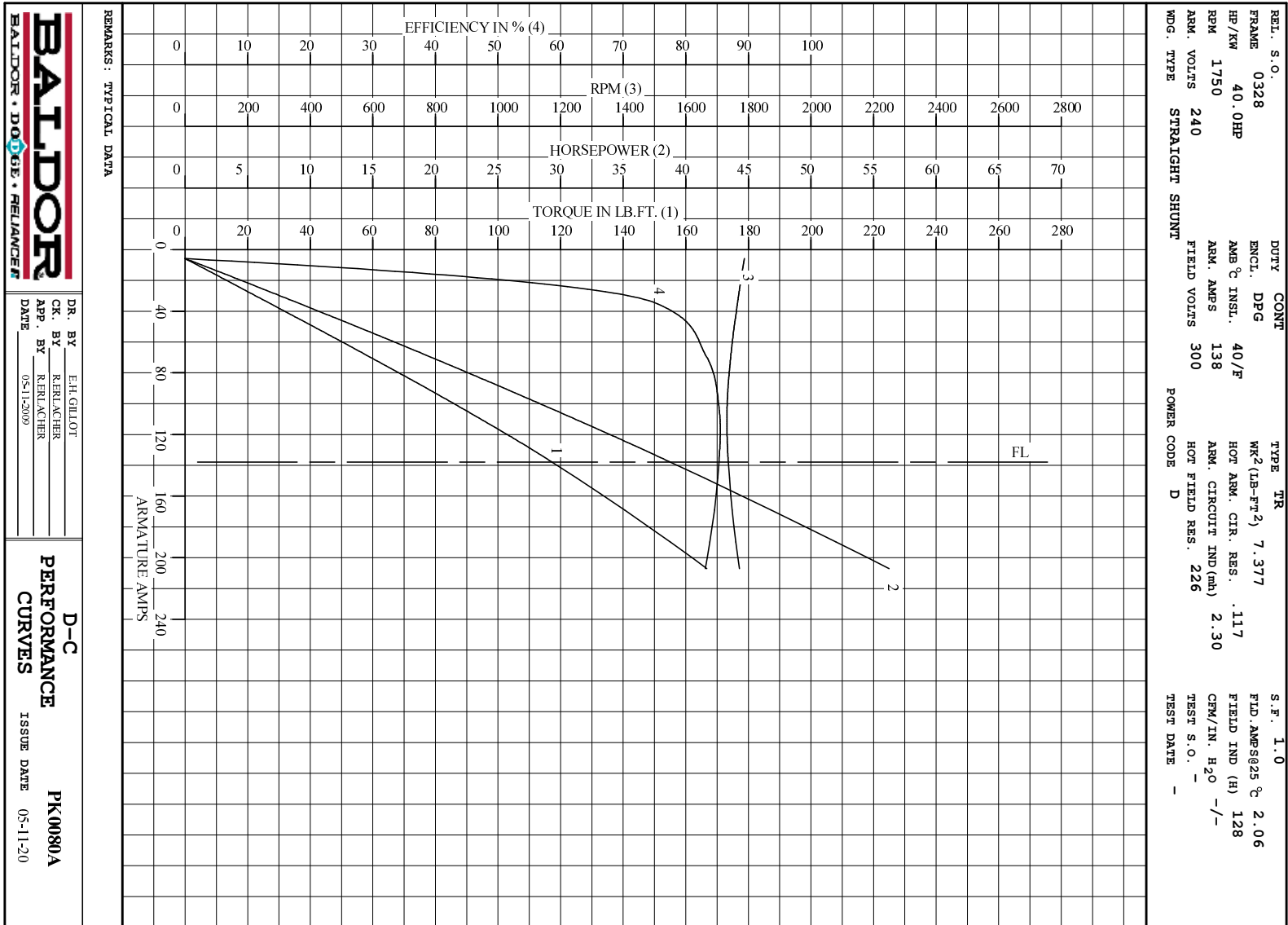


BALDOR
BALDOR • DOUG • RELIANCE

DR. BY E.H.GILLOT
CK. BY RERLACHER
APP. BY RERLACHER
DATE 05-11-2009

D-C APPLICATION DATA

SK0080A
ISSUE DATE 05-11-2009



DR. BY E.H.GILLOT
 CK. BY RERLACHER
 APP. BY RERLACHER
 DATE 05-11-2009

D-C
PERFORMANCE
CURVES ISSUE DATE 05-11-20
PK0080A