

BALDOR® • ***RELIANCE***

Product Information Packet

D2505P

5HP,1750/2300RPM,DC,1810AT,TEFC,F3,N

Copyright © All product information within this document is subject to Baldor Electric Company copyright © protection, unless otherwise noted.

Part Detail			
Type:	DC	Prod. Type:	T
Power Code:	D	Weight:	220
Frame Group:	1810AT	Mounting Pos.:	F3
HP:	5	Enclosure:	TEFC
RPM:	1750/2300	Wound:	STR. SHUNT
Service Factor:	1.0	Arm V:	240
Arm A:	17.60	Field V:	300
Field A:	.52	Field A Hot:	.38-.50/.48-.25
Insulation Class:	F	Ambient:	40
Duty:	CONT	DE Bearing:	6206
ODE Bearing:	6205	Brushes:	18044-4
Brush Qty.:			

885-1

FRAME	FOOT MOUNTING				D.E. SHAFT EXTENSION				DRIVE KEY				FRAME				APPROX. NET WT. LBS. (kg)	APPROXIMATE WEIGHT			
	BA	C	2F	G	H	J	K	N	N-W	U	V	W	KEY-LEN	A	B	C			D	G	P
L182AT	2.75	3.75	4.50	.38	.406	1.50	2.90	2.77	1.125	2.50 ¹	.13	250	1.38	8.81	5.75	17.00	4.50 ²	9.36	9.71	.28	86 ³
L184AT	2.75	3.75	7.00	.38	.406	1.50	2.90	2.77	1.125	2.50 ¹	.13	250	1.38	8.81	8.25	20.50	4.50 ²	9.36	9.71	.47	175 ³
T181AT	2.75	3.75	11.00	.38	.406	1.50	2.90	2.77	1.125	2.50 ¹	.13	250	1.38	8.81	12.25	23.38	4.50 ²	9.36	9.71	1.0	210 ³

1) SHAFT DIAMETERS TO 1.500 TOLERANCE +.0000 - .0005
 SHAFT DIAMETERS ABOVE 1.500 TOLERANCE +.0000 - .0010
 SHAFT DIAMETERS TO 1.625 ROUNDT .002 T.I.R. MAX.
 SHAFT DIAMETERS ABOVE 1.625 ROUNDT .003 T.I.R. MAX.

2) 'D' DIMENSION TOLERANCE +.000 - .060
 3) 'V' DIMENSION IS MAX. HUB LENGTH ON SHAFT
 4) CONDUIT BOX CAN BE ROTATED IN 90° STEPS ON ITS OWN AXIS.
 5) TOTAL WEIGHT OF MOTOR AND FAN COOLED PACKAGE.
 6) ALL DIMENSIONS NOT NOTED ARE NOMINAL DIMENSIONS CONSULT FACTORY FOR TOLERANCES.

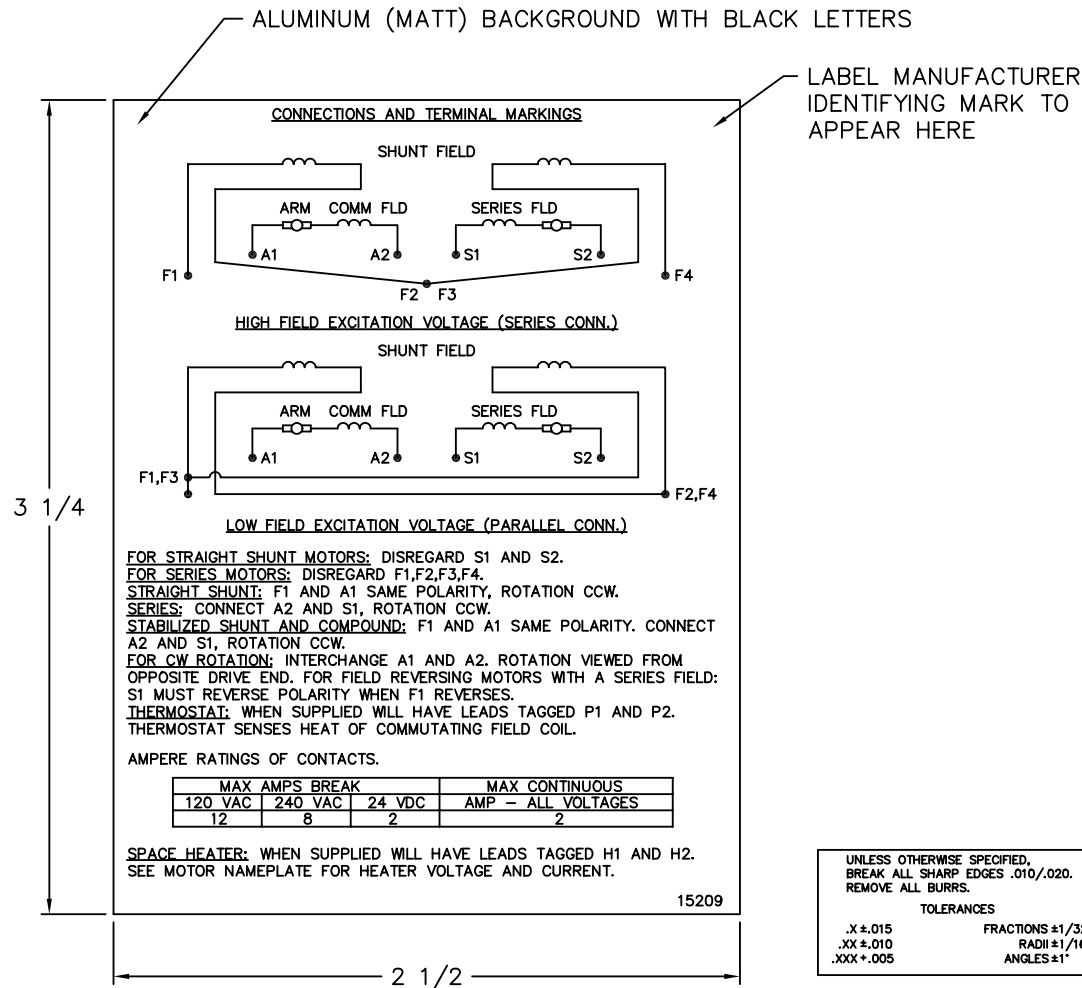
FOR F1 OR F2 CONDUIT BOX LOCATION SEE SALES ORDER

CUSTOMER IS RESPONSIBLE FOR DETERMINING THAT BALDOR'S PRODUCT WILL PERFORM SUITABLY IN THE INTENDED APPLICATION.

REV. DESG: REV. "D" DIM TO +.000 - .060	VERSION: 01	TDR: 000000752566	BALDOR
REV. LTR: A	FILE: \RGG\00019\541	REVISED: 04:37:28 06/20/2012	DIM SHEET
MTL: -	BY: ROGNAS		91 1 of 1

885-1

15209



NOTE:
 MATERIAL .005 MINIMUM FULL HARD ALUMINUM DULL FINISH.
 TEMP. RANGE -20°C TO +125°C MAXIMUM.
 FOR INDOOR AND OUTDOOR MOUNTING BACK.
 METAL, PRESSURE SENSITIVE BACK. MUST MEET CSA STANDARD.
 THE CSA IDENTIFYING MARK OF THE LABEL MANUFACTURER MUST APPEAR IN THE UPPER RIGHT HAND CORNER AS INDICATED.

MATL: NOTED			
REV:	G	CHANGE ALL "NAMEPLATE" TEXT TO "LABEL"	
60291	SCALE: -	BY: BKW	REVISED: 02/19/97
	FILE: CHB00002485	TDR: 0115147	

BALDOR ELECTRIC Co.

LABEL, CONNECTIONS AND TERMINAL MARKINGS DC

15209


REL. S. O.	FRAME	RATING	RPM	ARM. VOLTS	ARM. AMPS
	1810	5.00HP	1750	240	17.6
WINDING TYPE		S.F.	ENCL.	AMB °C/INSUL	DUTY
STRAIGHT SHUNT		1.0	TEFC	40/F	CONT
					300
POWER CODE		TYPE	WK 2 (LB-FT ²)	HOT ARM. CIR. RES.	FLD. AMPS@25 °C
D		T	.9565	1.04	.478
					HOT FIELD RES
					783

ARM. CIR. IND. (mh)	FIELD IND. (H)	COOLING AIR (CFM/IN H 20)	TURNS PER COIL SHUNT/SERIES	TEST DATE
15.7	263	-/-	3150/.00000	-

LOAD PERFORMANCE					
LOAD	AMPERES	TORQUE IN LB.-FT.	OUTPUT IN HP	RPM	% EFFICIENCY
NO LOAD	.58	0	0	1737	0
1/4	4.4	3.68	1.20	1709	74.6
2/4	8.8	7.89	2.52	1677	82.6
3/4	13	12.0	3.78	1654	84.7
4/4	18	15.9	4.97	1638	84.6
O.L.	26	23.5	7.18	1608	82.5

RPM VS. FIELD AMPS		Eg VS. FIELD AMPS	
FIELD AMPS	RPM N.L.	RPM F.L.	Eg N.L. @ BASE SPEED
.382	1736	1637	240
.338	1801	1699	233
.294	1909	1816	220
.250	2092	2003	200
.206	2392	2300	175

REMARKS: TYPICAL DATA

	DR. BY E. H. GILLOT	D-C MOTOR PERFORMANCE DATA DK0013A ISSUE DATE 03-19-2008
	CK. BY B. GRANT APP. BY R. ERLACHER DATE 03-19-2008	

