

BALDOR® • ***RELIANCE***

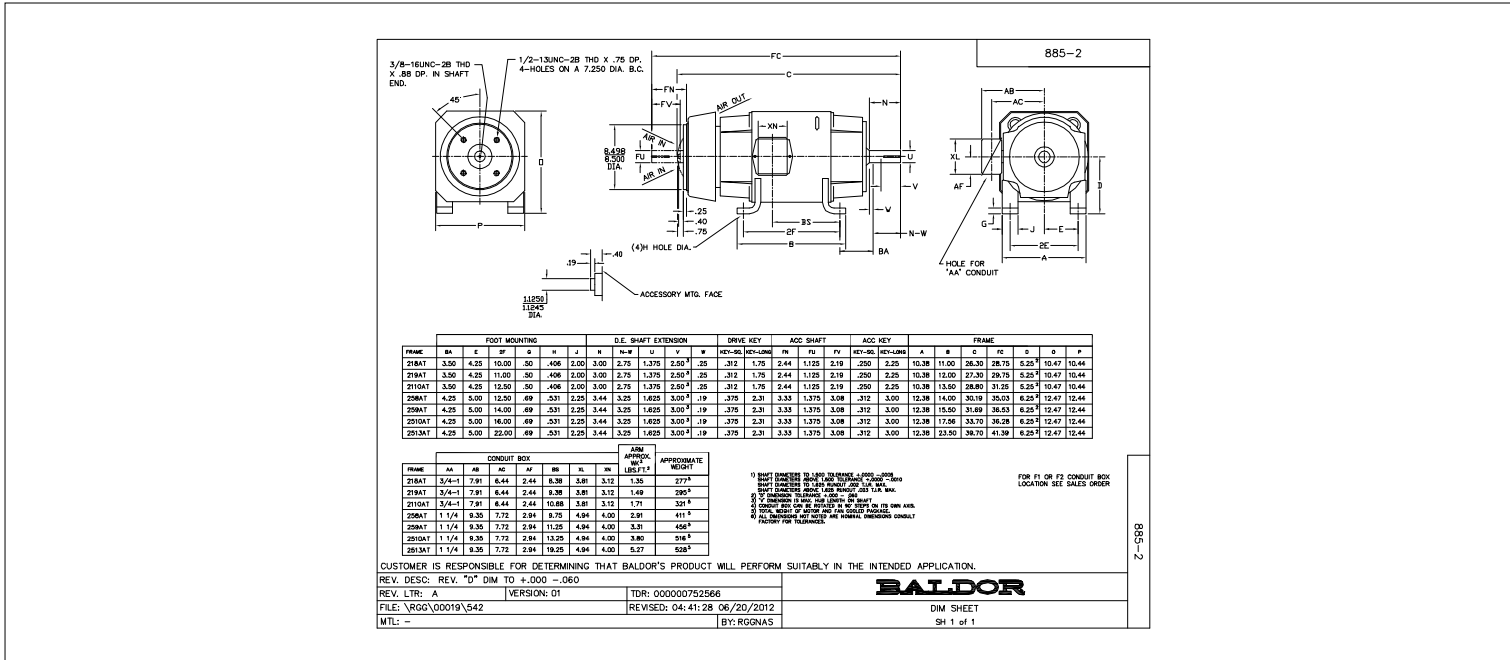
Product Information Packet

D2507P

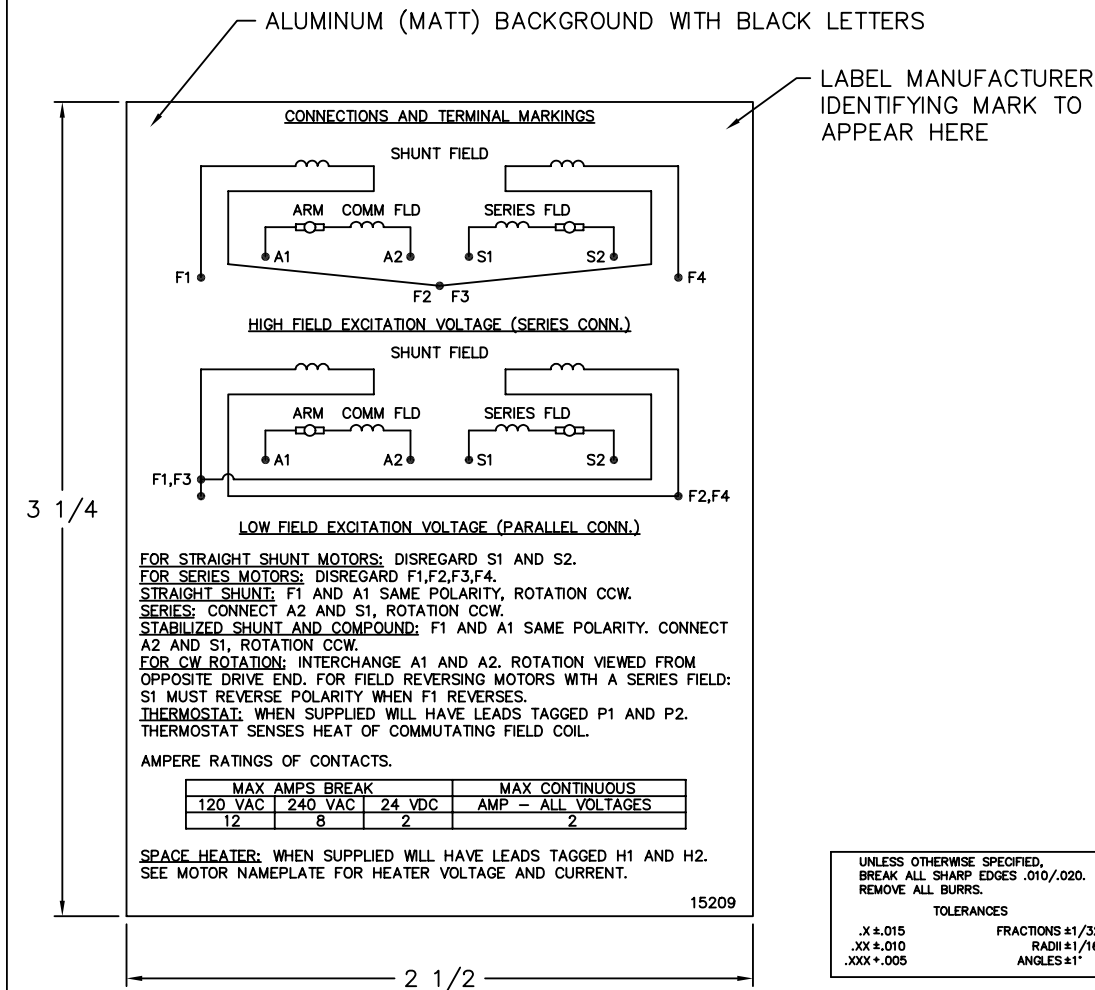
7.5HP,1750/2300RPM,DC,2110AT,TEFC,F1

Copyright © All product information within this document is subject to Baldor Electric Company copyright © protection, unless otherwise noted.

Part Detail			
Type:	DC	Prod. Type:	T
Power Code:	D	Weight:	300
Frame Group:	2110AT	Mounting Pos.:	F1
HP:	7.5	Enclosure:	TEFC
RPM:	1750/2300	Wound:	STR. SHUNT
Service Factor:	1.0	Arm V:	240
Arm A:	26.60	Field V:	150/ 300
Field A:	3.04/1.52	Field A Hot:	2.10-1.00/1.05-
Insulation Class:	F	Ambient:	40
Duty:	CONT	DE Bearing:	6207
ODE Bearing:	6207	Brushes:	150986-21-1
Brush Qty.:			



15209



NOTE:
 MATERIAL .005 MINIMUM FULL HARD ALUMINUM DULL FINISH.
 TEMP. RANGE -20°C TO +125°C MAXIMUM.
 FOR INDOOR AND OUTDOOR MOUNTING BACK.
 METAL, PRESSURE SENSITIVE BACK. MUST MEET CSA STANDARD.
 THE CSA IDENTIFYING MARK OF THE LABEL MANUFACTURER MUST APPEAR IN THE UPPER RIGHT HAND CORNER AS INDICATED.

MATL: NOTED			
REV:	G	CHANGE ALL "NAMEPLATE" TEXT TO "LABEL"	
60291	SCALE: -	BY: BKW	REVISED: 02/19/97
	FILE: CHB00002485	TDR: 0115147	

BALDOR ELECTRIC Co.

LABEL, CONNECTIONS AND TERMINAL MARKINGS DC

15209


REL S.O.	FRAME	RATING	RPM	ARM. VOLTS	ARM. AMPS
	2110AT	7.50HP	1750	240	26.6
WINDING TYPE		S.F.	ENCL.	AMB °C/INSUL	DUTY
STRAIGHT SHUNT		1.0	TEFC	40/F	CONT
					300
POWER CODE	TYPE	WK 2 (LB-FT ²)	HOT ARM.CIR.RES.	FLD. AMPS@25 °C	HOT FIELD RES
D	T	1.366	.498	1.51	285

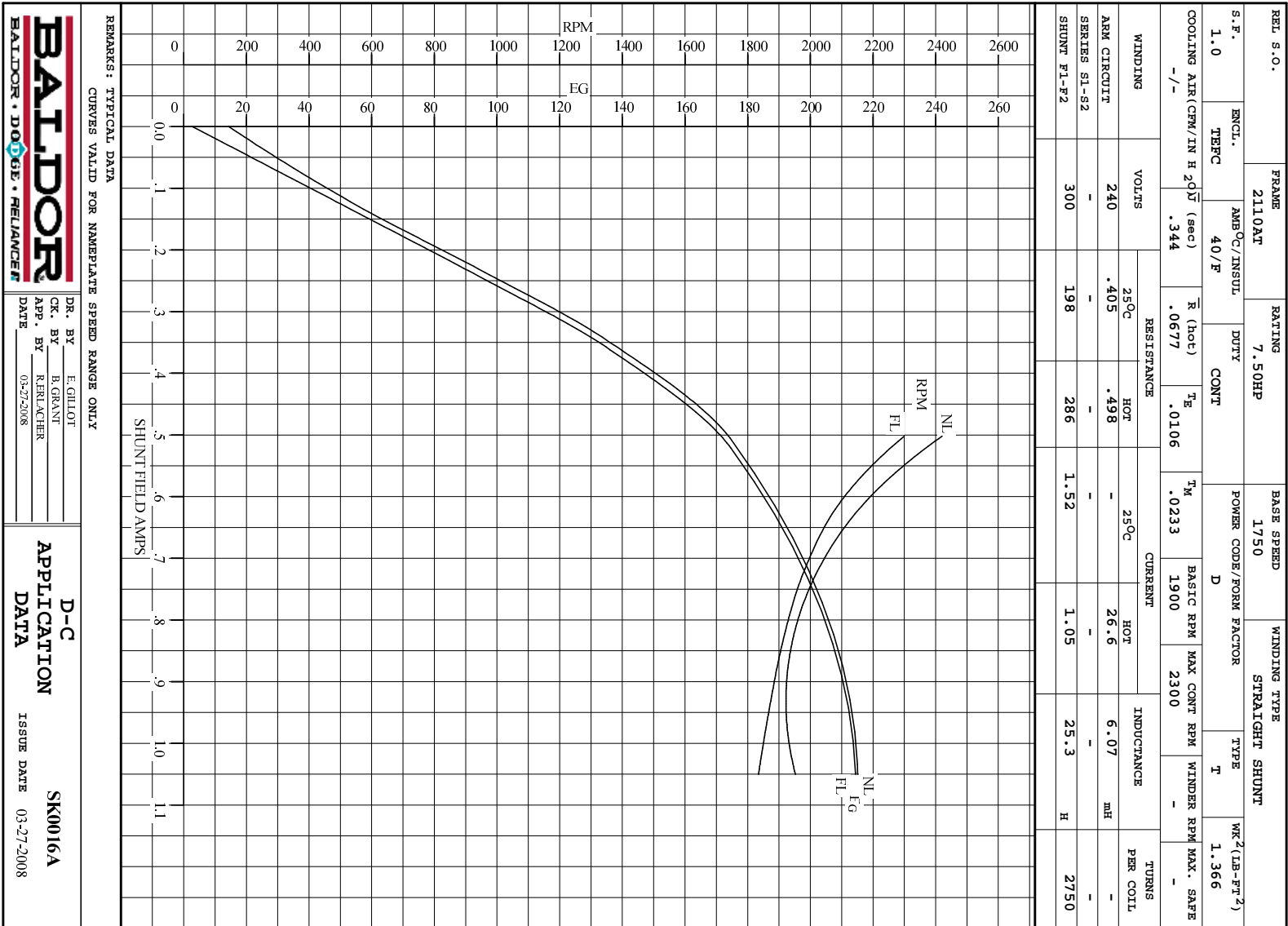
ARM. CIR. IND. (mh)	FIELD IND. (H)	COOLING AIR(CFM/IN H 20)	TURNS PER COIL SHUNT/SERIES	TEST DATE
6.07	25.3	-/-	2750/.00000	-

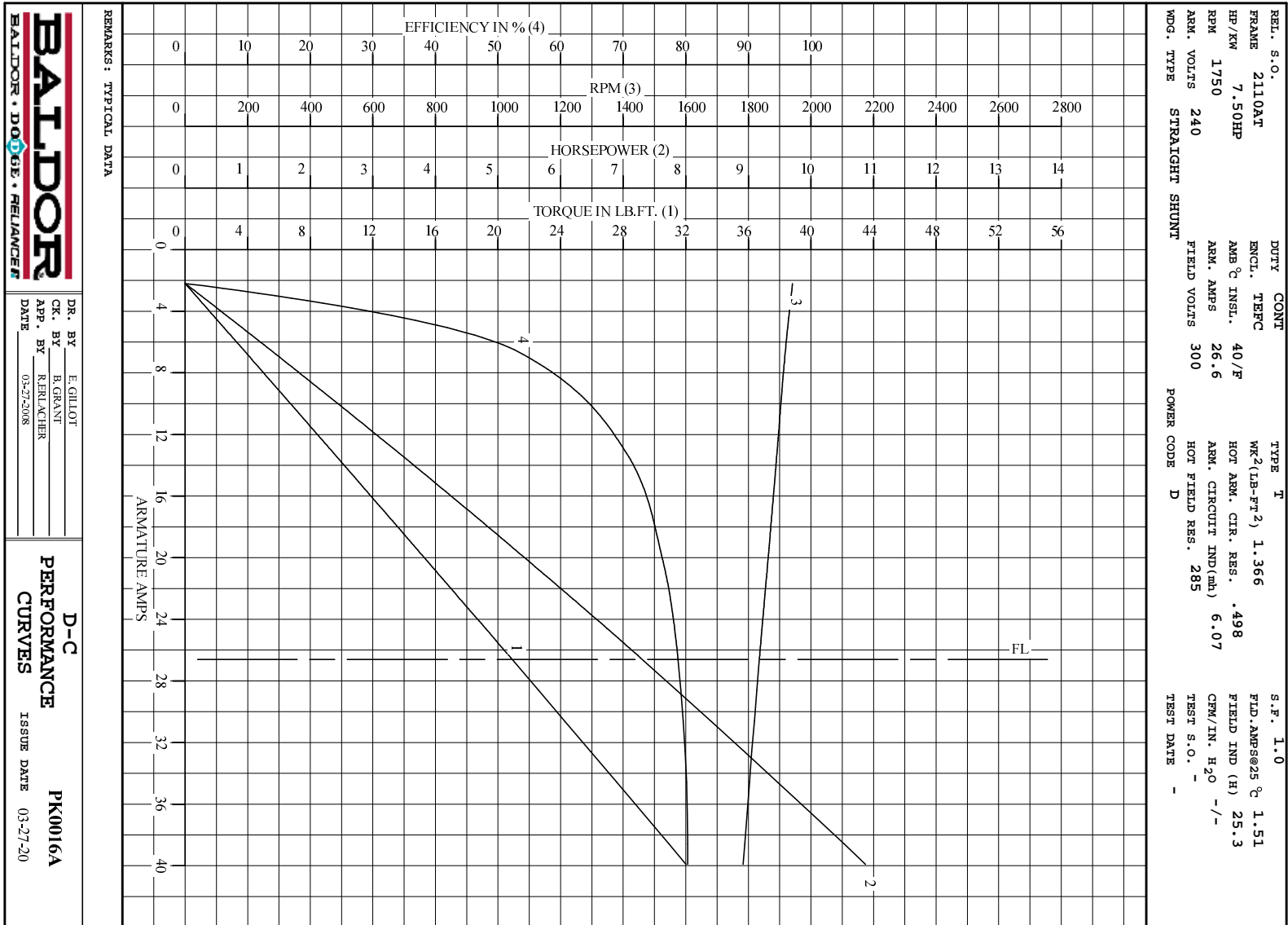
LOAD PERFORMANCE					
LOAD	AMPERES	TORQUE IN LB.-FT.	OUTPUT IN HP	RPM	% EFFICIENCY
NO LOAD	2.2	0	0	1941	0
1/4	6.7	3.85	1.41	1918	53.3
2/4	13	9.57	3.45	1891	70.7
3/4	20	15.2	5.41	1864	76.2
4/4	27	20.9	7.30	1835	78.8
O.L.	40	32.0	10.9	1784	80.3

RPM VS. FIELD AMPS			Eg VS. FIELD AMPS	
FIELD AMPS	RPM N.L.	RPM F.L.	Eg N.L. @ BASE SPEED	Eg F.L. @ BASE SPEED
1.05	1941	1835	215	214
.913	1924	1880	210	209
.776	1974	1943	204	202
.639	2125	2057	193	191
.501	2420	2300	173	171

REMARKS: TYPICAL DATA

	DR. BY E. GILLIOT	D-C MOTOR PERFORMANCE DATA DK0016A ISSUE DATE 03-27-2008
	CK. BY B. GRANT APP. BY R. RELANCHER DATE 03-27-2008	





DR. BY E.GILLOT
 CK. BY B.GRANT
 APP. BY R.FELACHER
 DATE 03-27-2008

D-C
PERFORMANCE
CURVES ISSUE DATE 03-27-20
PK0016A