

BALDOR® • RELIANCE

Product Information Packet

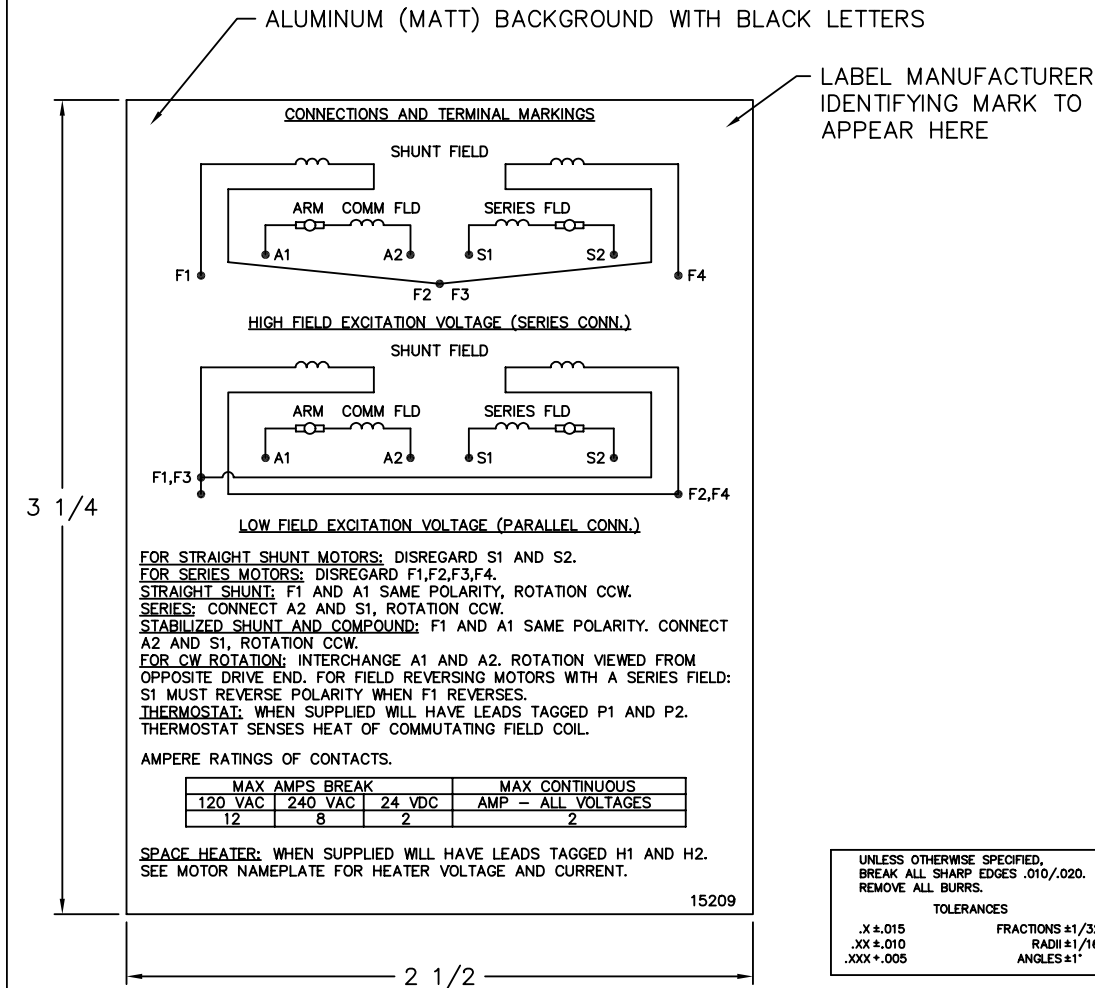
D2510P

10HP, 1750/2300RPM, DC, 259AT, TEFC, F1

Copyright © All product information within this document is subject to Baldor Electric Company copyright © protection, unless otherwise noted.

Part Detail			
Type:	DC	Prod. Type:	T
Power Code:	D	Weight:	250
Frame Group:	259AT	Mounting Pos.:	F1
HP:	10	Enclosure:	TEFC
RPM:	1750/2300	Wound:	STR. SHUNT
Service Factor:	1.0	Arm V:	240
Arm A:	34.30	Field V:	300
Field A:	1.21	Field A Hot:	.86-1.16/1.26-
Insulation Class:	F	Ambient:	40
Duty:	CONT	DE Bearing:	6209
ODE Bearing:	6207	Brushes:	150986-25-1
Brush Qty.:			

15209



NOTE:
 MATERIAL .005 MINIMUM FULL HARD ALUMINUM DULL FINISH.
 TEMP. RANGE -20°C TO +125°C MAXIMUM.
 FOR INDOOR AND OUTDOOR MOUNTING BACK.
 METAL, PRESSURE SENSITIVE BACK. MUST MEET CSA STANDARD.
 THE CSA IDENTIFYING MARK OF THE LABEL MANUFACTURER MUST APPEAR IN THE UPPER RIGHT HAND CORNER AS INDICATED.

MATL: NOTED			
REV:	G	CHANGE ALL "NAMEPLATE" TEXT TO "LABEL"	
60291	SCALE: -	BY: BKW	REVISED: 02/19/97
	FILE: CHB00002485	TDR: 0115147	

BALDOR ELECTRIC Co.

LABEL, CONNECTIONS AND TERMINAL MARKINGS DC

15209


REL S.O.	FRAME	RATING	RPM	ARM. VOLTS	ARM. AMPS
	259	10.0HP	1750	240	34.3
WINDING TYPE		S.F.	ENCL.	AMB °C/INSUL	DUTY
STRAIGHT SHUNT		1.0	TEFC	40/F	CONT
					300
POWER CODE	TYPE	WK 2 (LB-FT ²)	HOT ARM.CIR.RES.	FLD. AMPS@25 °C	HOT FIELD RES
D	T	2.686	.323	1.21	347

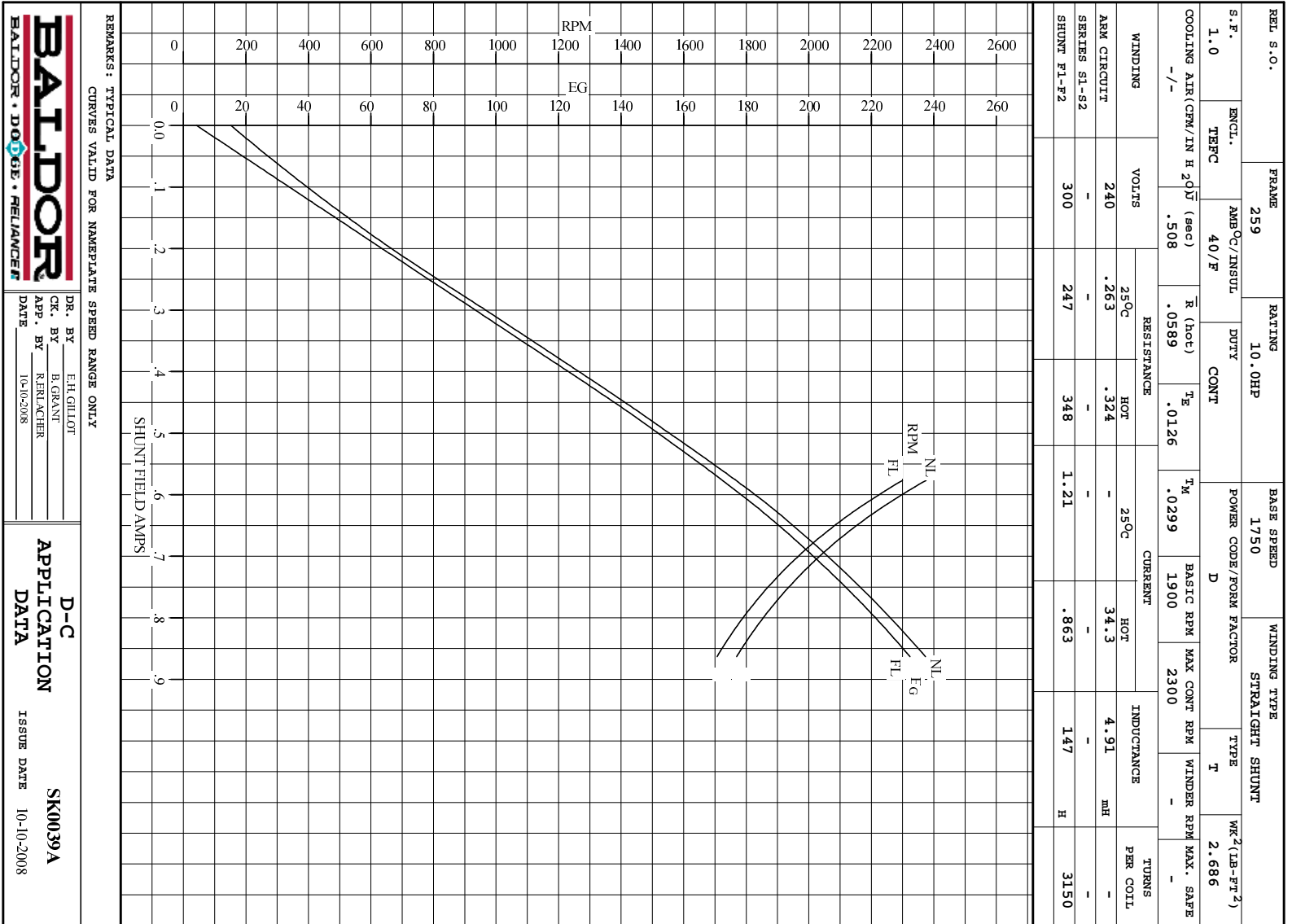
ARM. CIR. IND. (mh)	FIELD IND. (H)	COOLING AIR(CFM/IN H 20)	TURNS PER COIL SHUNT/SERIES	TEST DATE
4.91	147	-/-	3150/.00000	-

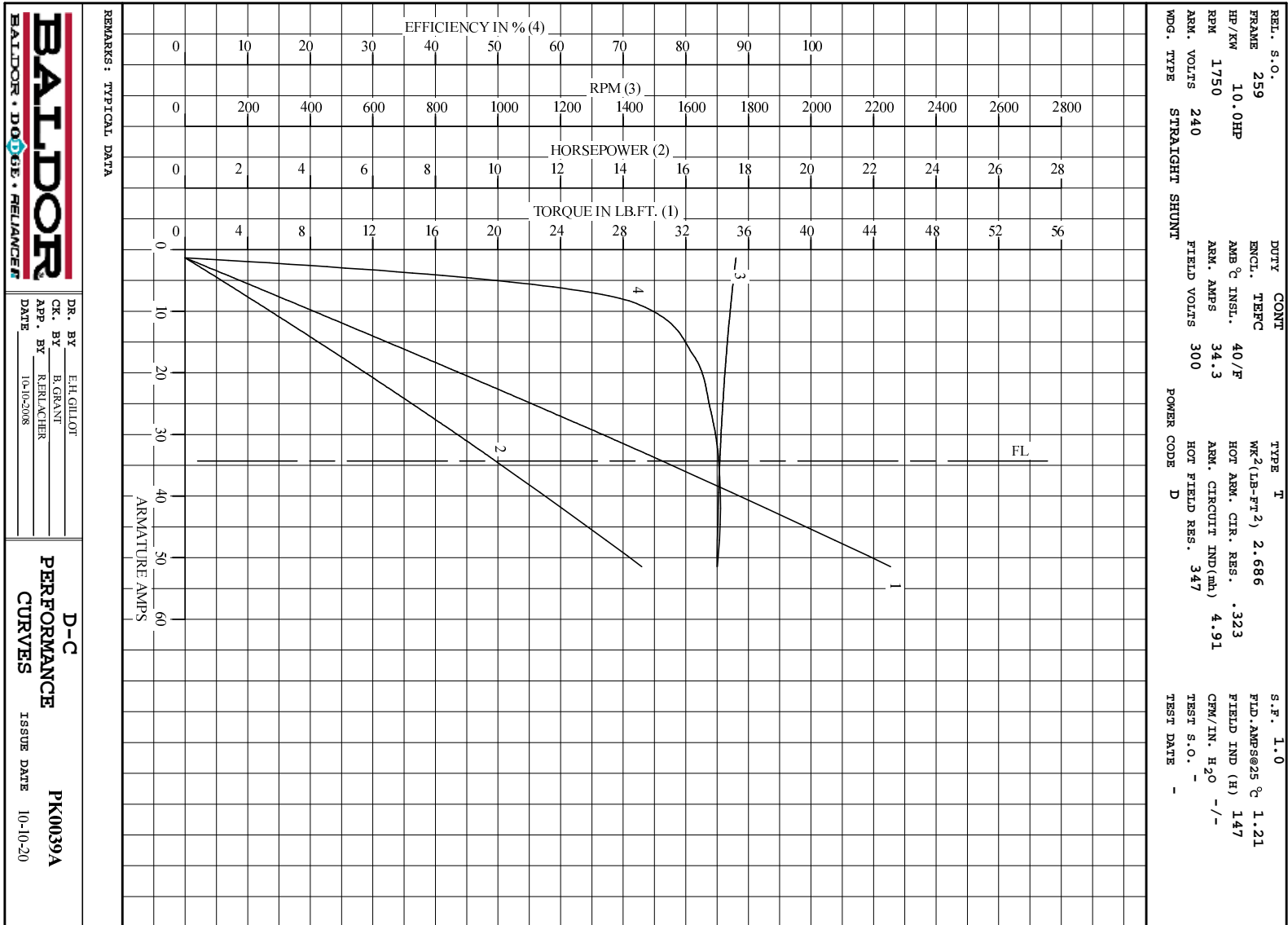
LOAD PERFORMANCE					
LOAD	AMPERES	TORQUE IN LB.-FT.	OUTPUT IN HP	RPM	% EFFICIENCY
NO LOAD	1.3	0	0	1760	0
1/4	8.6	6.87	2.28	1745	71.7
2/4	17	14.9	4.91	1729	81.2
3/4	26	22.8	7.46	1718	83.9
4/4	34	30.5	9.92	1709	85.3
O.L.	51	45.1	14.6	1700	85.0

RPM VS. FIELD AMPS			Eg VS. FIELD AMPS	
FIELD AMPS	RPM N.L.	RPM F.L.	Eg N.L. @ BASE SPEED	Eg F.L. @ BASE SPEED
.863	1760	1708	237	232
.791	1867	1802	225	220
.719	1993	1925	211	205
.648	2157	2087	194	190
.576	2375	2300	176	172

REMARKS: TYPICAL DATA

	DR. BY E. H. GILLOT	D-C MOTOR PERFORMANCE DATA DK00039A ISSUE DATE 10-10-2008
	CK. BY B. GRANT APP. BY R. RELANCHER DATE 10-10-2008	





DR. BY E.H.GILLOT
 CK. BY B.GRANT
 APP. BY R.FELACHER
 DATE 10-10-2008

D-C
PERFORMANCE
CURVES ISSUE DATE 10-10-20
PK0039A