

BALDOR® • RELIANCE

Product Information Packet

D2515P

15HP, 1750/2300RPM, DC, 288AT, TEFC, F1

Copyright © All product information within this document is subject to Baldor Electric Company copyright © protection, unless otherwise noted.

Part Detail			
Type:	DC	Prod. Type:	T
Power Code:	D	Weight:	630
Frame Group:	0288AT	Mounting Pos.:	F1
HP:	15	Enclosure:	TEFC
RPM:	1750/2300	Wound:	STR. SHUNT
Service Factor:	1.0	Arm V:	240
Arm A:	51.70	Field V:	150/ 300
Field A:	3.06/1.53	Field A Hot:	1.96-1.38/.98-
Insulation Class:	F	Ambient:	40
Duty:	CONT	DE Bearing:	6210
ODE Bearing:	6209	Brushes:	28610-1
Brush Qty.:			

885-3

FRAME	FOOT MOUNTING				D.E. SHAFT EXTENSION				DRIVE KEY				ACC. SHAFT EXTENSION				ACC. KEY				FRAME				
	BA	E	FP	H	J	N	N-W	V	W	KEY-90	KEY-106	FN	FV	IV	KEY-90	KEY-106	X	B	FC	Q	U	P			
287AT	4.75	5.50	12.50	69	531	2.50	3.91	3.75	1.875	3.50 ¹	18	.500	2.50	3.44	1.625	3.19	.375	2.44	13.81	14.13	34.09	37.08	7.00 ⁴	13.88	13.75
288AT	4.75	5.50	14.00	69	531	2.50	3.91	3.75	1.875	3.50 ¹	18	.500	2.50	3.44	1.625	3.19	.375	2.44	13.81	14.13	36.84	38.25	7.00 ⁴	13.88	13.75
2810AT	4.75	5.50	18.00	69	531	2.50	3.91	3.75	1.875	3.50 ¹	18	.500	2.50	3.44	1.625	3.19	.375	2.44	13.81	14.13	39.84	42.84	7.00 ⁴	13.88	13.75
2811AT	4.75	5.50	20.00	69	531	2.50	3.91	3.75	1.875	3.50 ¹	18	.500	2.50	3.44	1.625	3.19	.375	2.44	13.81	14.13	43.84	46.83	7.00 ⁴	13.88	13.75
2813AT	4.75	5.50	23.00	69	531	2.50	3.91	3.75	1.875	3.50 ¹	18	.500	2.50	3.44	1.625	3.19	.375	2.44	13.81	14.13	47.84	50.82	7.00 ⁴	13.88	13.75

FRAME	CONDUIT BOX				APPROX. HEIGHT	APPROXIMATE WEIGHT			
	BA	AB	AC	AF					
287AT	1 1/4	11.88	9.25	5.00	10.69	7.88	5.25	4.67	506 ⁵
288AT	1 1/4	11.88	9.25	5.00	12.64	7.88	5.25	6.38	616 ⁵
2810AT	1 1/4	11.88	9.25	5.00	16.04	7.88	5.25	8.80	776 ⁵
2811AT	1 1/4	11.88	9.25	5.00	19.14	7.88	5.25	12.2	953 ⁵
2813AT	1 1/4	11.88	9.25	5.00	23.64	7.88	5.25	16.40	1223 ⁵

1) SHAFT DIAMETERS TO 1.500 TOLERANCE +.0000 -0.0005
 2) SHAFT DIAMETERS ABOVE 1.500 TOLERANCE +.0000 -0.0010
 3) SHAFT DIAMETERS 1.500 TOLERANCE +.0000 -0.0010
 4) CONDUIT BOX CAN BE ROTATED IN 90° STEPS ON ITS OWN AXIS.
 5) TOTAL HEIGHT OF MOTOR AND FAN COOLED PACKAGE.
 6) ALL DIMENSIONS NOT NOTED ARE NOMINAL DIMENSIONS CONSULT FACTORY FOR TOLERANCES.

FOR F1 OR F2 CONDUIT BOX LOCATION SEE SALES ORDER

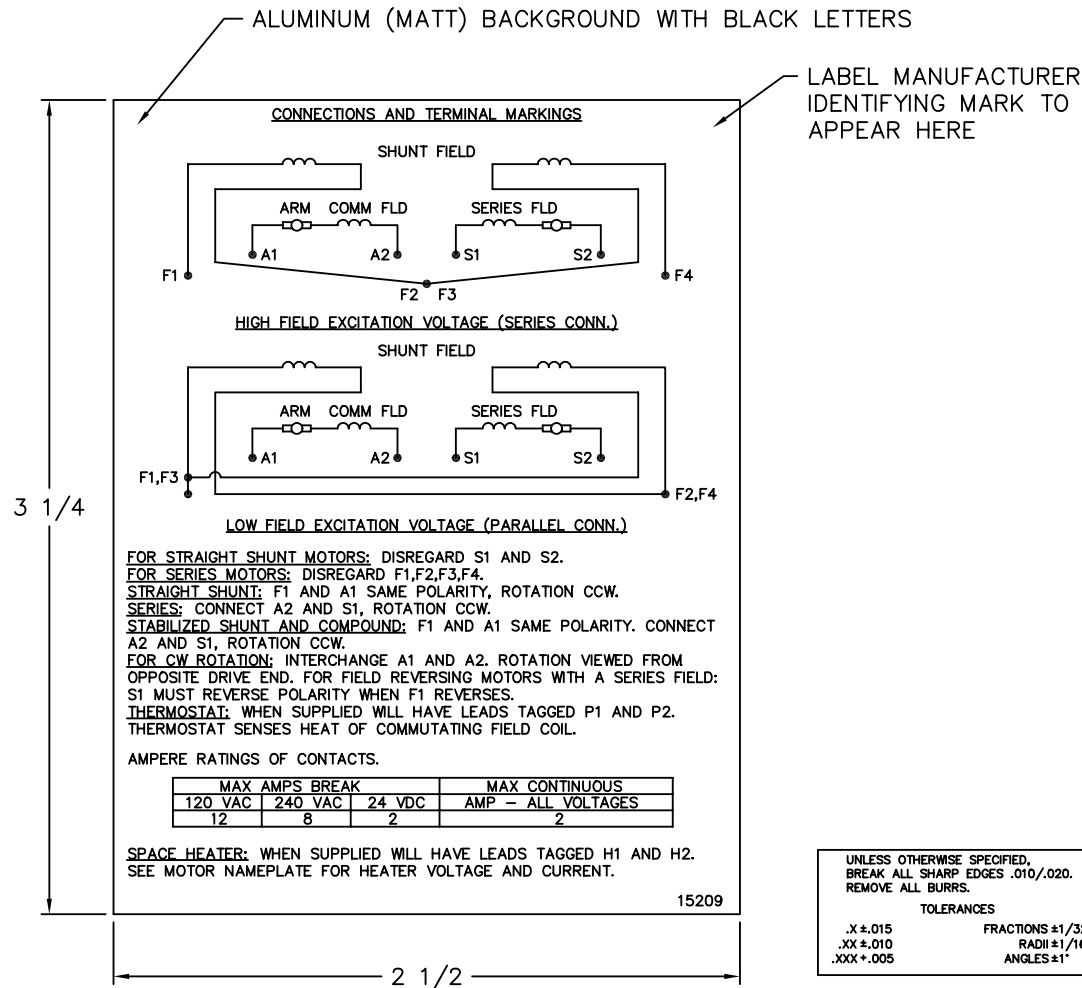
CUSTOMER IS RESPONSIBLE FOR DETERMINING THAT BALDOR'S PRODUCT WILL PERFORM SUITABLY IN THE INTENDED APPLICATION.

REV. DESG: REV. "D" DIM TO +.000 -0.060	VERSION: 01	TDR: 000000752566
REV. LTR: B	FILE: \RGG\00019\543	REVISED: 04:53:23 06/20/2012
MTL: --		BY: ROGNAS

DIM SHEET 91 1 of 1

885-3
 00
 01
 1
 C4

15209



NOTE:
 MATERIAL .005 MINIMUM FULL HARD ALUMINUM DULL FINISH.
 TEMP. RANGE -20°C TO +125°C MAXIMUM.
 FOR INDOOR AND OUTDOOR MOUNTING BACK.
 METAL, PRESSURE SENSITIVE BACK. MUST MEET CSA STANDARD.
 THE CSA IDENTIFYING MARK OF THE LABEL MANUFACTURER MUST APPEAR IN THE UPPER RIGHT HAND CORNER AS INDICATED.

MATL: NOTED

REV: G CHANGE ALL "NAMEPLATE" TEXT TO "LABEL"

60291

SCALE: - BY: BKW REVISED: 02/19/97
 FILE: CHB00002485 TDR: 0115147

BALDOR ELECTRIC Co.

LABEL, CONNECTIONS AND TERMINAL MARKINGS DC

15209


REL. S. O.	FRAME	RATING	RPM	ARM. VOLTS	ARM. AMPS
	288	15.0HP	1750	240	51.7
WINDING TYPE		S.F.	ENCL.	AMB °C/INSUL	DUTY
STRAIGHT SHUNT		1.0	TEFC	40/F	CONT
					300
POWER CODE	TYPE	WK 2 (LB-FT ²)	HOT ARM. CIR. RES.	FLD. AMPS@25 °C	HOT FIELD RES
D	T	4.420	.226	1.52	306

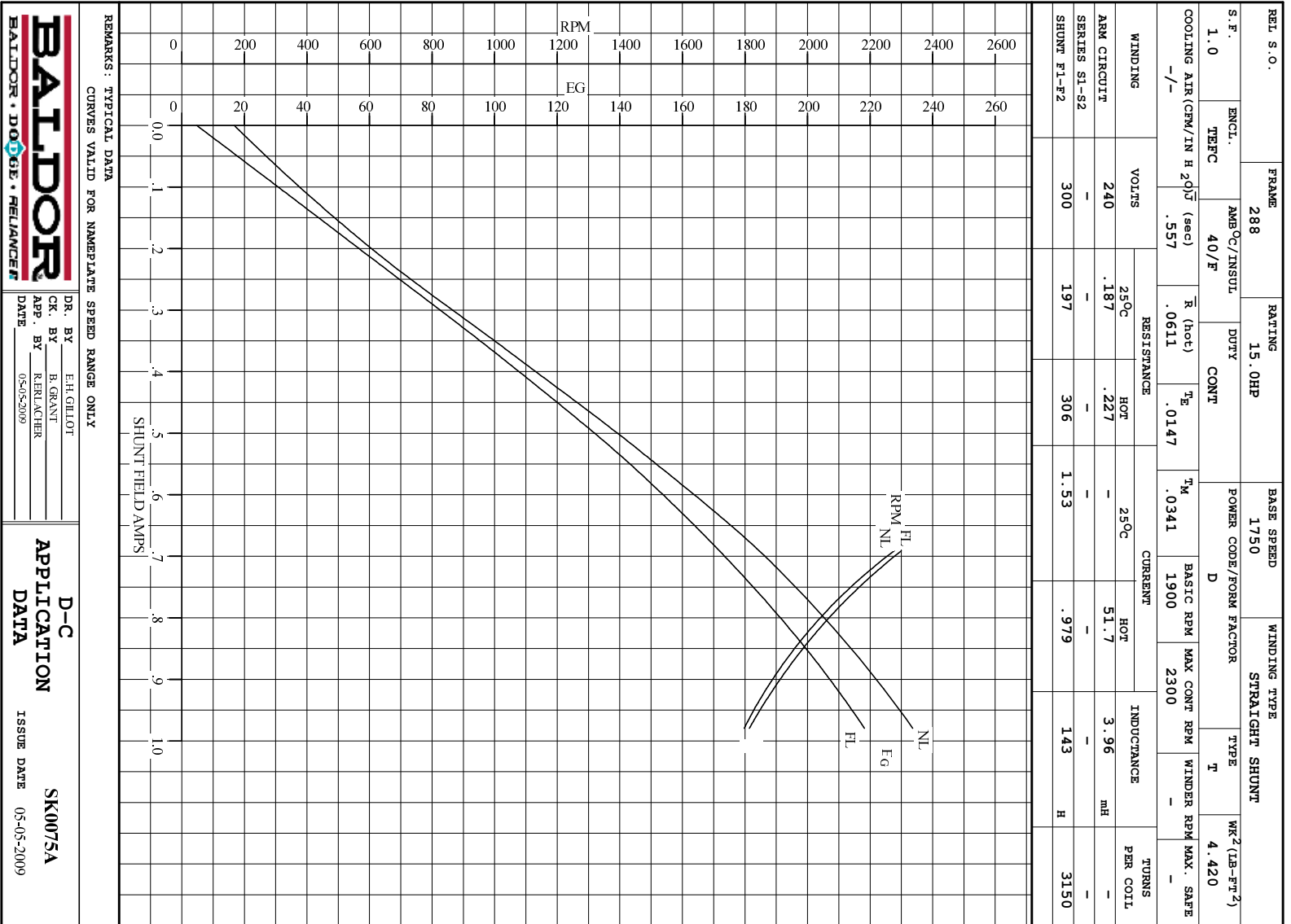
ARM. CIR. IND. (mh)	FIELD IND. (H)	COOLING AIR (CFM/IN H 20)	TURNS PER COIL SHUNT/SERIES	TEST DATE
3.95	143	-/-	3150/.00000	-

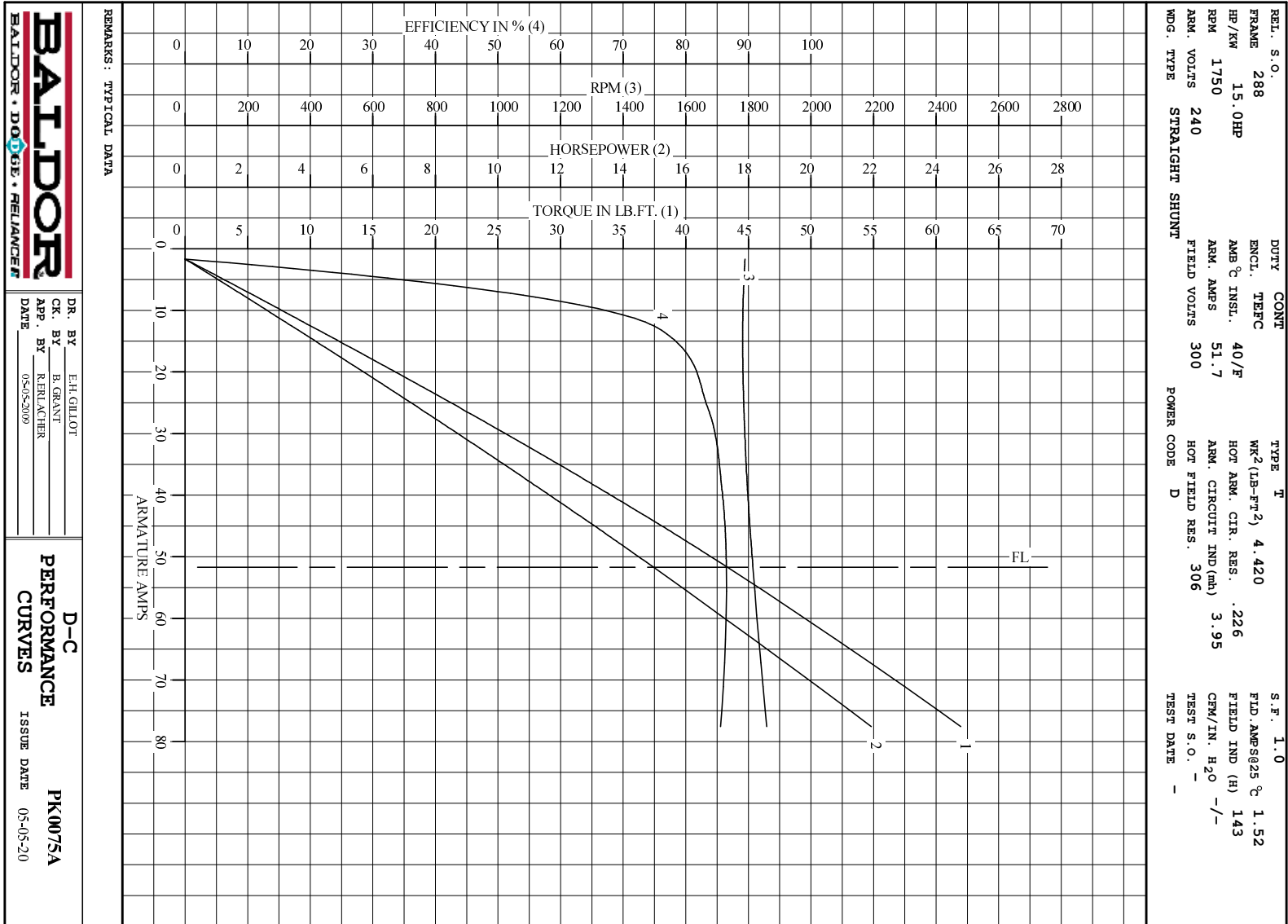
LOAD PERFORMANCE					
LOAD	AMPERES	TORQUE IN LB.-FT.	OUTPUT IN HP	RPM	% EFFICIENCY
NO LOAD	1.7	0	0	1789	0
1/4	13	10.4	3.53	1782	75.6
2/4	26	22.0	7.48	1786	83.5
3/4	39	33.0	11.3	1797	85.8
4/4	52	43.3	15.0	1815	86.5
O.L.	78	62.0	21.9	1858	85.6

RPM VS. FIELD AMPS		Eg VS. FIELD AMPS		
FIELD AMPS	RPM N.L.	RPM F.L.	Eg N.L. @ BASE SPEED	Eg F.L. @ BASE SPEED
.979	1789	1814	233	218
.907	1878	1902	223	208
.835	1981	2008	212	197
.763	2111	2138	199	185
.691	2277	2300	184	172

REMARKS: TYPICAL DATA

 BALDOR • DOUG • RELIANCE	DR. BY E. H. GILLOT CK. BY B. GRANT APP. BY R. BRANCHER DATE 05-05-2009	D-C MOTOR DK0075A PERFORMANCE DATA ISSUE DATE 05-05-2009
---	--	--





DR. BY E.H.GILLOT
 CK. BY B.GRANT
 APP. BY R.RAUCHER
 DATE 05-05-2009

D-C
PERFORMANCE
CURVES ISSUE DATE 05-05-20
PK0075A