

# **BALDOR® • RELIANCE**

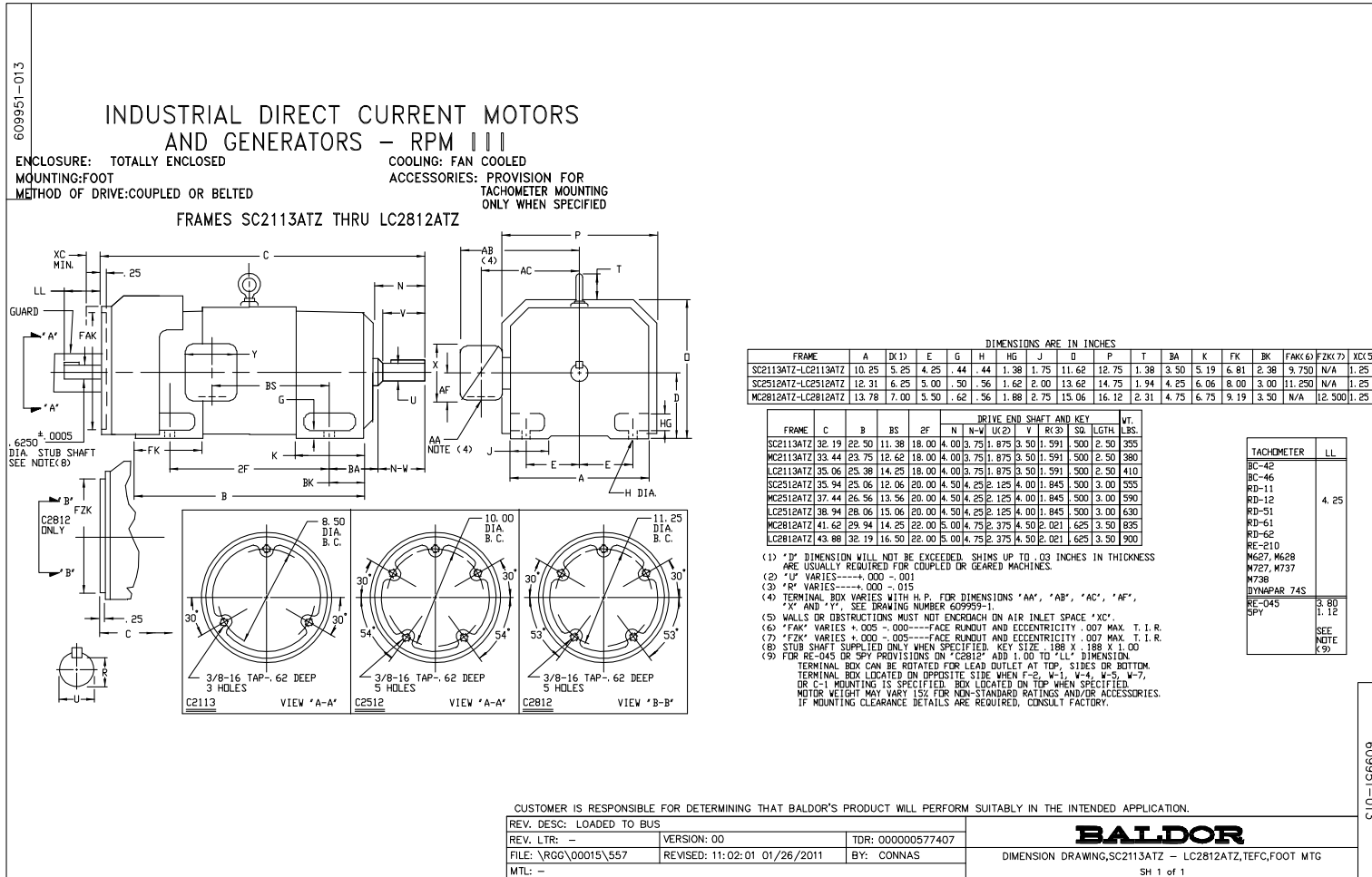
## **Product Information Packet**

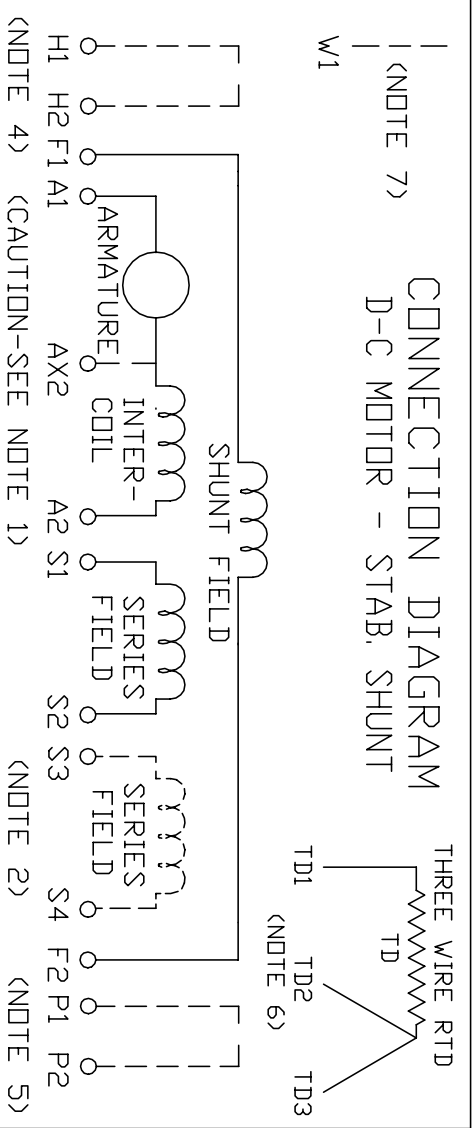
# **D2515R**

**15 1750/2300 SC2512ATZ TEFC 240V**

Copyright © All product information within this document is subject to Baldor Electric Company copyright © protection, unless otherwise noted.

Part Detail			
Type:	DC	Prod. Type:	TR
Power Code:	C	Weight:	560
Frame Group:	SC 2512ATZ	Mounting Pos.:	F1
HP:	15	Enclosure:	TEFC
RPM:	1750/2300	Wound:	STAB SHUNT
Service Factor:	1.0	Arm V:	240
Arm A:	53.50	Field V:	150
Field A:	2.18	Field A Hot:	1.49/1.10
Insulation Class:	F	Ambient:	40
Duty:	CONT	DE Bearing:	60BC03J30X
ODE Bearing:	50BC02J30X	Brushes:	419904-51AD
Brush Qty.:			





ARMATURE AND FIELD EXTERNAL CONNECTIONS  
WARNING- SEE NOTE 8 FOR GROUNDING INSTRUCTIONS




ROTATION FACING COMMUTATOR END

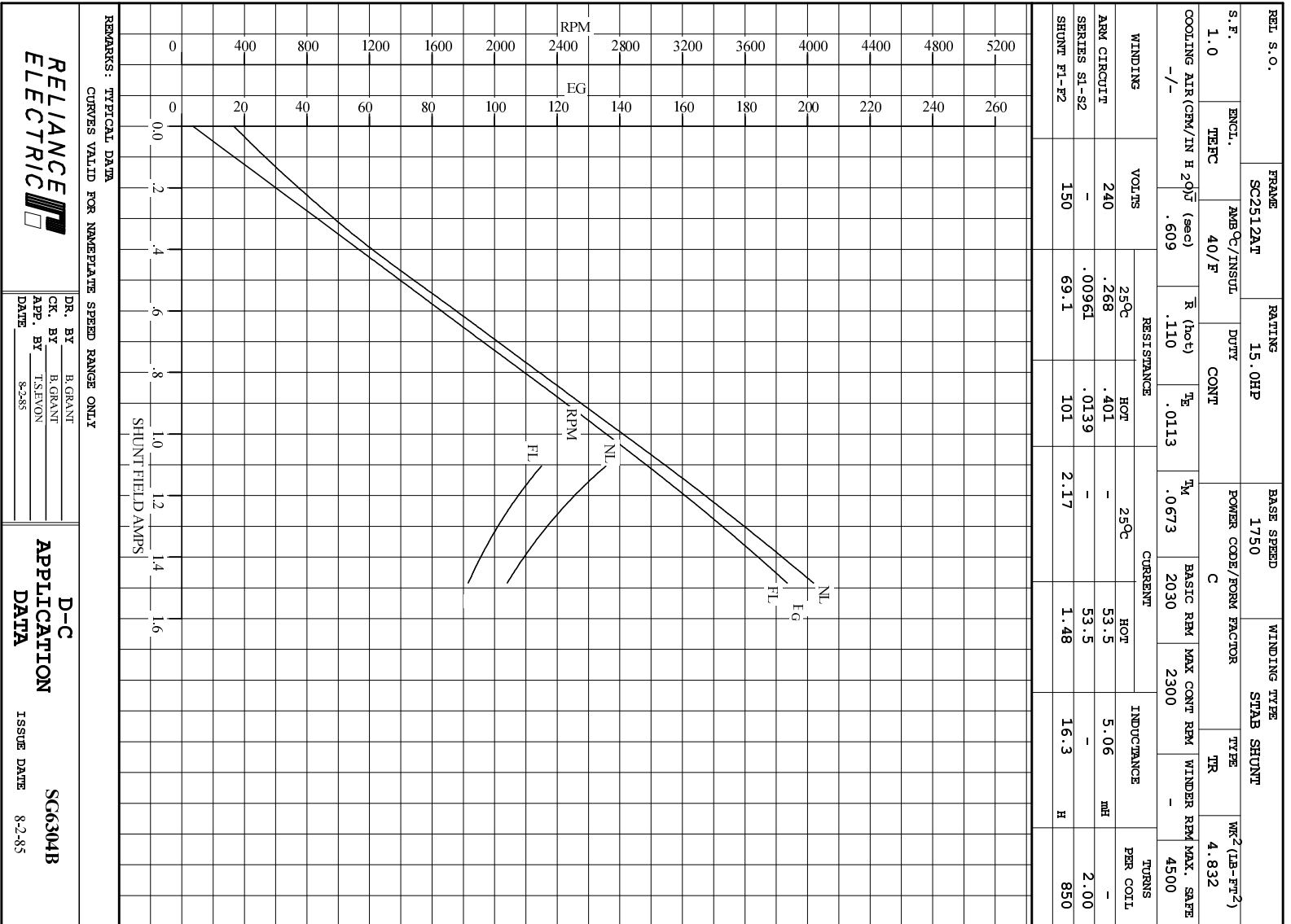
1. **CAUTION** — ARMATURE AND SERIES FIELD MAY HAVE MULTIPLE LEADS. CONNECT ALL LUGS WITH THE SAME MARKING TOGETHER.
2. OPTIONAL SERIES FIELD IS MARKED S3 AND S4. FOR CUMULATIVE SERIES FIELD, CONNECT S3 TO S2 AND CONNECT S4 TO NEGATIVE. FOR DIFFERENTIAL SERIES FIELD CONNECT S4 TO S2 AND S3 TO NEGATIVE.
3. OPTIONAL CONTROL SIGNAL LEAD IS MARKED AX2. ALWAYS TAKE INTERPOLE DROP BETWEEN A2 AND AX2. NOTE: NEMA DESIGNATION FOR AX2 IS LETTER C.
4. SPACE HEATERS, WHEN PROVIDED, WILL HAVE LEADS MARKED H1 AND H2, H3, H4, ETC.
5. THERMAL PROTECTOR, WHEN PROVIDED, WILL HAVE LEADS MARKED P1 AND P2, P3, P4, ETC.
6. WINDING RTDS, WHEN PROVIDED, WILL HAVE LEADS MARKED TD1, TD2, & TD3.
7. BRUSH WEAR SENSOR, WHEN PROVIDED, WILL HAVE LEAD MARKED W1.
8. **WARNING** — MOTOR MUST BE GROUNDED TO PREVENT SERIOUS INJURIES TO PERSONNEL. GROUND THE MOTOR PER IEC, NATIONAL ELECTRICAL CODE AND ANY APPLICABLE LOCAL ELECTRICAL CODES. A TAPPED HOLE IS PROVIDED IN THE CONDUIT BOX, ON THE FOOT. FRAME BRACE OR OPPOSITE OPPOSITE DRIVE END BRACKET, ADJACENT TO THE TERMINAL BOX FOR FOR MOTOR GROUNDING. GROUND LEAD, WHEN PROVIDED, WILL BE GREEN.

CUSTOMER \_\_\_\_\_ RELIANCE  
ORDER NO. \_\_\_\_\_ S.D. NO. \_\_\_\_\_

RELIANCE ELECTRIC CLEVELAND, OHIO 44117 U.S.A.	DR. BY N.L. EVANS CK. BY N. JESCHKE APP. BY E. J. HINER DATE 5-5-69
CONNECTION DIAGRAM	406770-1 ORIGINAL AT RCC

C/R 290048, 354478, 354480

REL. S.O.	FRAME	RATING	RPM	ARM. VOLTS	ARM. AMPS
	SC2512AT	15.0HP	1750	240	53.5
WINDING TYPE		S.F.	ENCL.	AMB °C/INSUL	DUTY
STAB. SHUNT		1.0	TEFC	40/F	CONT
					FIELD VOLTS
					150
POWER CODE	TYPE	WK <sup>2</sup> (LB-FT <sup>2</sup> )	HOT ARM. CIR. RES.	FLD. AMPS@25 °C	HOT FIELD RES
C	TR	4.832	.400	2.17	101
ARM. CIR. IND. (mh)	FIELD IND. (H)	COOLING AIR (CFM/IN H 20)	TURNS PER COIL SHUNT/SERIES	TEST DATE	
5.06	16.2	-/-	850/2	-	
LOAD PERFORMANCE					
LOAD	AMPERES	TORQUE IN LB.-FT.	OUTPUT IN HP	RPM	% EFFICIENCY
NO LOAD	1.9	0	0	2063	0
1/4	13	9.46	3.60	2001	77.2
2/4	27	20.5	7.57	1936	84.4
3/4	40	31.6	11.3	1879	85.3
4/4	54	42.6	14.8	1831	84.4
O.L.	80	63.3	21.2	1759	81.0
RPM VS. FIELD AMPS			Eg VS. FIELD AMPS		
FIELD AMPS	RPM N.L.	RPM F.L.	Eg N.L. @ BASE SPEED	Eg F.L. @ BASE SPEED	
	1.48	2063	1830	201	193
	1.38	2203	1922	190	183
	1.29	2345	2028	179	172
	1.19	2512	2152	167	160
	1.10	2711	2300	154	148
REMARKS: TYPICAL DATA					
MAXIMUM SAFE SPEED = 4500 RPM					
		DR. BY B. GRANT CK. BY B. GRANT APP. BY T. STEVON DATE 8-2-85		D-C MOTOR PERFORMANCE DATA DG6304B ISSUE DATE 8-2-85	



**RELIANCE ELECTRIC**

DR. BY B. GRANT  
CR. BY B. GRANT  
APP. BY T. SIMON  
DATE 8-285

**D-C APPLICATION DATA**

SC6304B  
ISSUE DATE 8-2-85

