

BALDOR® • RELIANCE

Product Information Packet

D2520P

20HP, 1750/2300RPM, DC, 328AT, TEFC, F1

Copyright © All product information within this document is subject to Baldor Electric Company copyright © protection, unless otherwise noted.

Part Detail			
Type:	DC	Prod. Type:	T
Power Code:	D	Weight:	850
Frame Group:	0328AT	Mounting Pos.:	F1
HP:	20	Enclosure:	TEFC
RPM:	1750/2300	Wound:	STR. SHUNT
Service Factor:	1.0	Arm V:	240
Arm A:	68.80	Field V:	300
Field A:	1.76	Field A Hot:	1.11-.60
Insulation Class:	F	Ambient:	40
Duty:	CONT	DE Bearing:	6211
ODE Bearing:	6210	Brushes:	28610-1
Brush Qty.:			

885-4

3/8-16UNC-2B THD X .88 DP. IN SHAFT END.

1/2-13UNC-2B THD X .75 DP. 4-HOLES ON A 7.250 DIA. B.C.

8.498
8.500 DIA.

45°

FC
C

FN
FV

AIR IN
AIR IN

8.498
8.500 DIA.

.25
.40
.75

(4)H HOLE DIA.

19
.40

1.1250
1.1245 DIA.

ACCESSORY MTG. FACE

AB
AC

N
U
V

XL
AF

G
J
E

2E
A

HOLE FOR 'AA' CONDUIT

FRAME	FOOT MOUNTING				D.E. SHAFT EXTENSION							DRIVE KEY			ACC SHAFT EXTENSION			ACC KEY			FRAME					
	BA	E	2F	G	H	J	N	N-W	U	V	W	KEY-SQ.	KEY-LONG	FN	FU	FV	KEY-SQ.	KEY-LONG	A	B	C	FC	D	O	P	
327AT	5.25	6.25	14.00	.81	.656	3.00	4.40	4.25	2.125	4.00 ³	.15	.500	3.12	3.94	1.875	3.69	.500	2.81	15.88	15.75	37.06	40.57	8.00 ²	15.94	15.88	
328AT	5.25	6.25	16.00	.81	.656	3.00	4.40	4.25	2.125	4.00 ³	.15	.500	3.12	3.94	1.875	3.69	.500	2.81	15.88	17.75	38.94	42.45	8.00 ²	15.94	15.88	
329AT	5.25	6.25	18.00	.81	.656	3.00	4.40	4.25	2.125	4.00 ³	.15	.500	3.12	3.94	1.875	3.69	.500	2.81	15.88	19.75	40.94	44.45	8.00 ²	15.94	15.88	
365AT	5.88	7.00	12.25	.81	.813	3.25	4.94	4.75	2.375	4.50 ³	.19	.625	3.50	4.62	2.125	4.37	.500	3.13	17.75	13.75	37.91	42.62	9.00 ²	17.94	17.88	
366AT	5.88	7.00	14.00	.81	.813	3.25	4.94	4.75	2.375	4.50 ³	.19	.625	3.50	4.62	2.125	4.37	.500	3.13	17.75	15.50	40.10	44.81	9.00 ²	17.94	17.88	
368AT	5.88	7.00	18.00	.81	.813	3.25	4.94	4.75	2.375	4.50 ³	.19	.625	3.50	4.62	2.125	4.37	.500	3.13	17.75	19.50	43.10	47.81	9.00 ²	17.94	17.88	
3610AT	5.88	7.00	22.00	.81	.813	3.25	4.94	4.75	2.375	4.50 ³	.19	.625	3.50	4.62	2.125	4.37	.500	3.13	17.75	23.50	46.10	50.81	9.00 ²	17.94	17.88	
3612AT	5.88	7.00	28.00	.81	.813	3.25	4.94	4.75	2.375	4.50 ³	.19	.625	3.50	4.62	2.125	4.37	.500	3.13	17.75	29.50	49.10	53.81	9.00 ²	17.94	17.88	

FRAME	CONDUIT BOX						ARM APPROX. Wt ² LBS.FT. ²	APPROXIMATE WEIGHT	
	AA	AB	AC	AF	BS	XL			
327AT	2	12.94	10.32	5.00	11.81	7.88	5.25	8.45	760 ⁵
328AT	2	12.94	10.32	5.00	13.68	7.88	5.25	9.67	835 ⁵
329AT	2	12.94	10.32	5.00	15.68	7.88	5.25	10.97	944 ⁵
365AT	2 1/2	14.06	11.38	5.00	9.06	7.88	5.25	15.61	865 ⁵
366AT	2 1/2	14.06	11.38	5.00	11.25	7.88	5.25	18.27	975 ⁵
368AT	2 1/2	14.06	11.38	5.00	14.25	7.88	5.25	22.21	1135 ⁵
3610AT	3	16.86	13.09	6.53	18.25	11.63	7.76	28.00	1213 ⁵
3612AT	3	16.86	13.09	6.53	24.25	11.63	7.76	31.60	1552 ⁵

1) SHAFT DIAMETERS TO 1.500 TOLERANCE +.0000 -.0005
SHAFT DIAMETERS ABOVE 1.500 TOLERANCE +.0000 -.0010
SHAFT DIAMETERS TO 1.625 RUNOUT .002 T.I.R. MAX.
SHAFT DIAMETERS ABOVE 1.625 RUNOUT .003 T.I.R. MAX.
2) 'V' DIMENSION TOLERANCE +.000 - .000
3) 'V' DIMENSION IS MAX. HUB LENGTH ON SHAFT
4) CONDUIT BOX CAN BE ROTATED IN 90° STEPS ON ITS OWN AXIS.
5) TOTAL WEIGHT OF MOTOR AND FAN COOLED PACKAGE.
6) ALL DIMENSIONS NOT NOTED ARE NOMINAL DIMENSIONS CONSULT FACTORY FOR TOLERANCES.

FOR F1 OR F2 CONDUIT BOX LOCATION SEE SALES ORDER

CUSTOMER IS RESPONSIBLE FOR DETERMINING THAT BALDOR'S PRODUCT WILL PERFORM SUITABLY IN THE INTENDED APPLICATION.

REV. DESC: 885-4 RESCALE DRAWING IN BUS	VERSION: 02	TDR: 00000763880
REV. LTR: C	REVISED: 09:37:55 09/07/2012	BY: RGGWT
FILE: \RGG\00019\544		
MTL: -		

DIM SHEET
SH 1 of 1

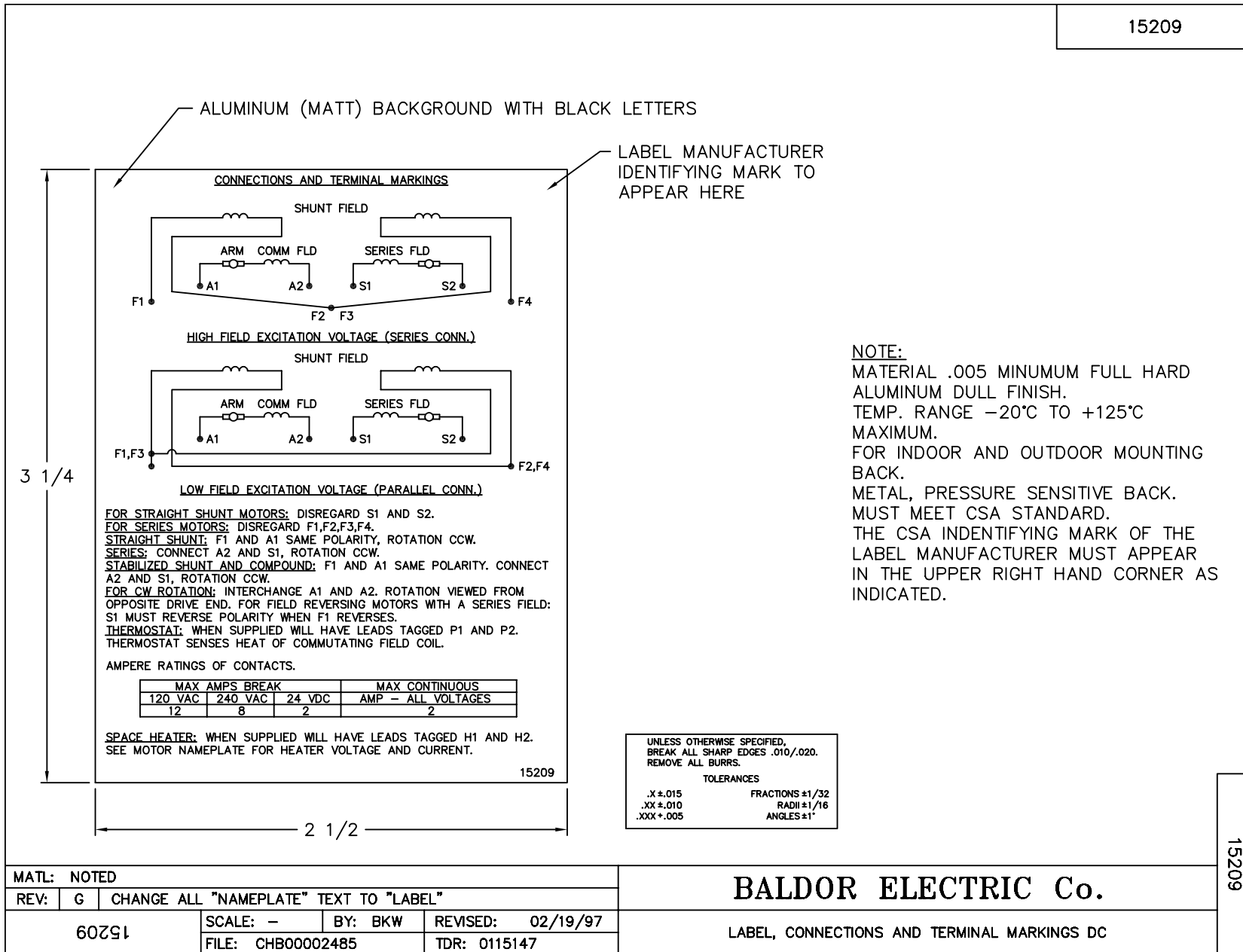
885-4

Page 3 of 7

BALDOR
A MEMBER OF THE ABB GROUP

For Baldor Sales and Support, Please Contact: Walker EMD • <http://www.walkeremd.com> • Toll-Free: (800) 876-4444 • Phone: (203) 426-7700 • Fax: (203) 426-7800

15209




REL. S. O.	FRAME	RATING	RPM	ARM. VOLTS	ARM. AMPS
	328	20.0HP	1750	240	68.8
WINDING TYPE		S.F.	ENCL.	AMB °C/INSUL	DUTY
STRAIGHT SHUNT		1.0	TENV	40/F	CONT
					300
POWER CODE		TYPE	WK 2 (LB-FT ²)	HOT ARM. CIR. RES.	FLD. AMPS@25 °C
D		T	7.377	.114	1.75
					HOT FIELD RES
					269

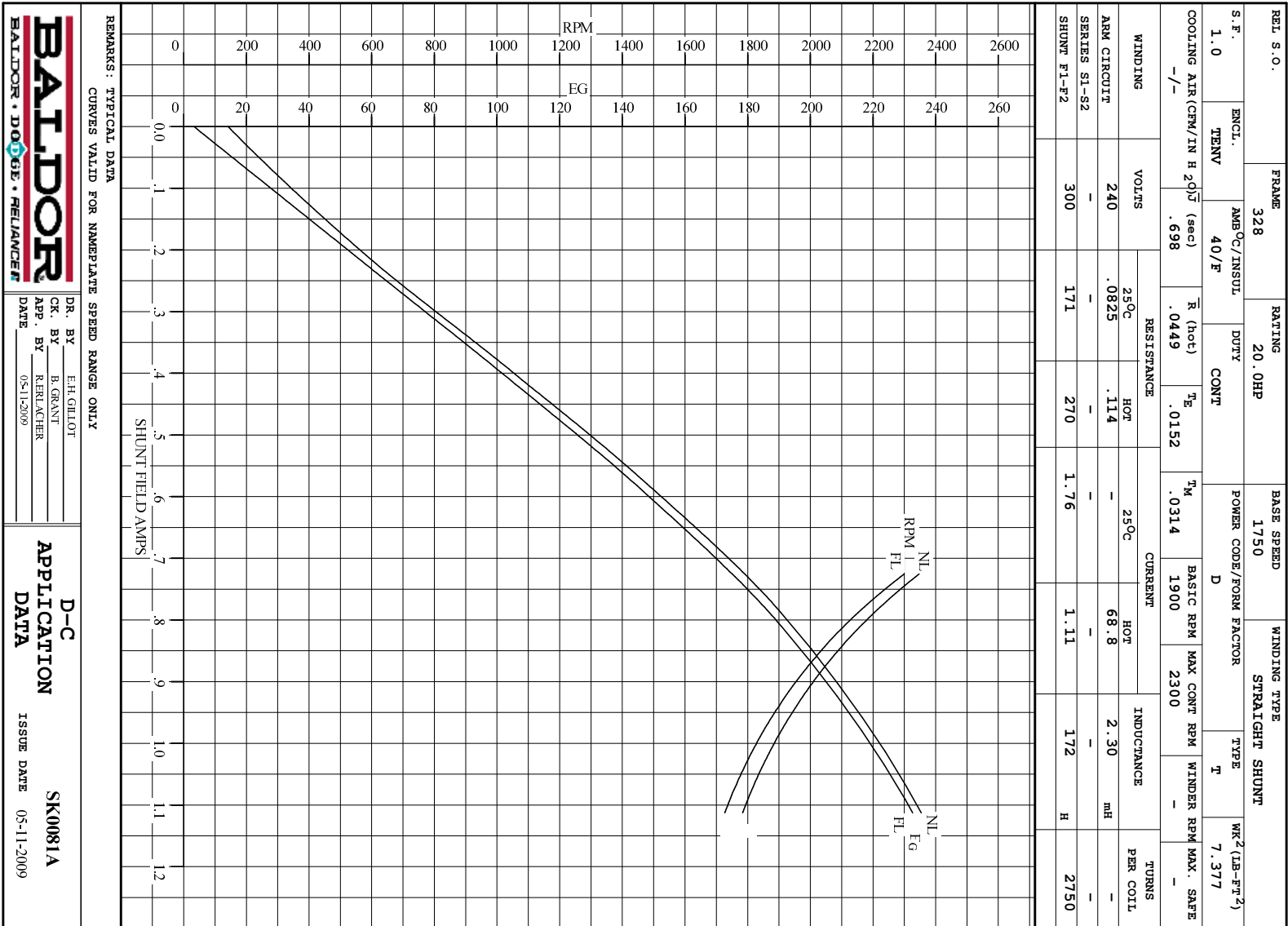
ARM. CIR. IND. (mh)	FIELD IND. (H)	COOLING AIR (CFM/IN H 20)	TURNS PER COIL SHUNT/SERIES	TEST DATE
2.29	171	-/-	2750/.00000	-

LOAD PERFORMANCE					
LOAD	AMPERES	TORQUE IN LB.-FT.	OUTPUT IN HP	RPM	% EFFICIENCY
NO LOAD	2.9	0	0	1775	0
1/4	17	13.5	4.52	1762	73.7
2/4	34	29.5	9.84	1749	83.0
3/4	52	45.4	15.0	1738	85.6
4/4	69	61.0	20.1	1730	86.7
O.L.	103	91.1	29.8	1719	87.2

RPM VS. FIELD AMPS		Eg VS. FIELD AMPS	
FIELD AMPS	RPM N.L.	RPM F.L.	Eg N.L. @ BASE SPEED
1.11	1774	1729	235
1.01	1868	1811	224
.918	1982	1927	212
.822	2137	2083	196
.725	2347	2300	178
			Eg F.L. @ BASE SPEED
			232

REMARKS: TYPICAL DATA

	DR. BY E. H. GILLOT	D-C MOTOR PERFORMANCE DATA DK0081A ISSUE DATE 05-11-2009
	CK. BY B. GRANT APP. BY R. BRANCHER DATE 05-11-2009	



BALDOR
BALDOR • DOUG • RELIANCE

DR. BY E.H.GILLOT
CK. BY B.GRANT
APP. BY R.RRACHER
DATE 05-11-2009

D-C
APPLICATION
DATA

ISSUE DATE 05-11-2009
SK0081A

