

BALDOR® • *RELIANCE*

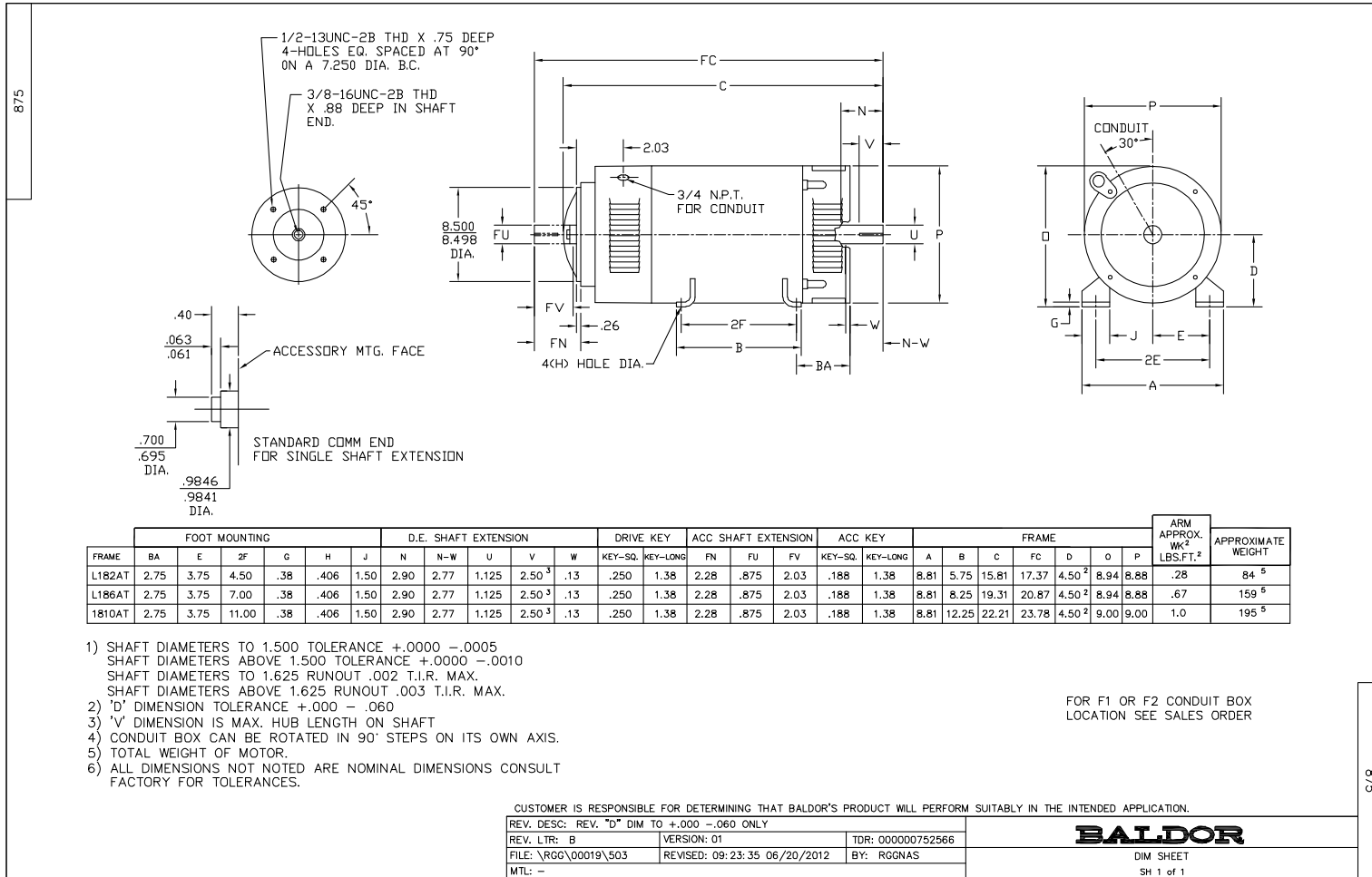
Product Information Packet

D5005P

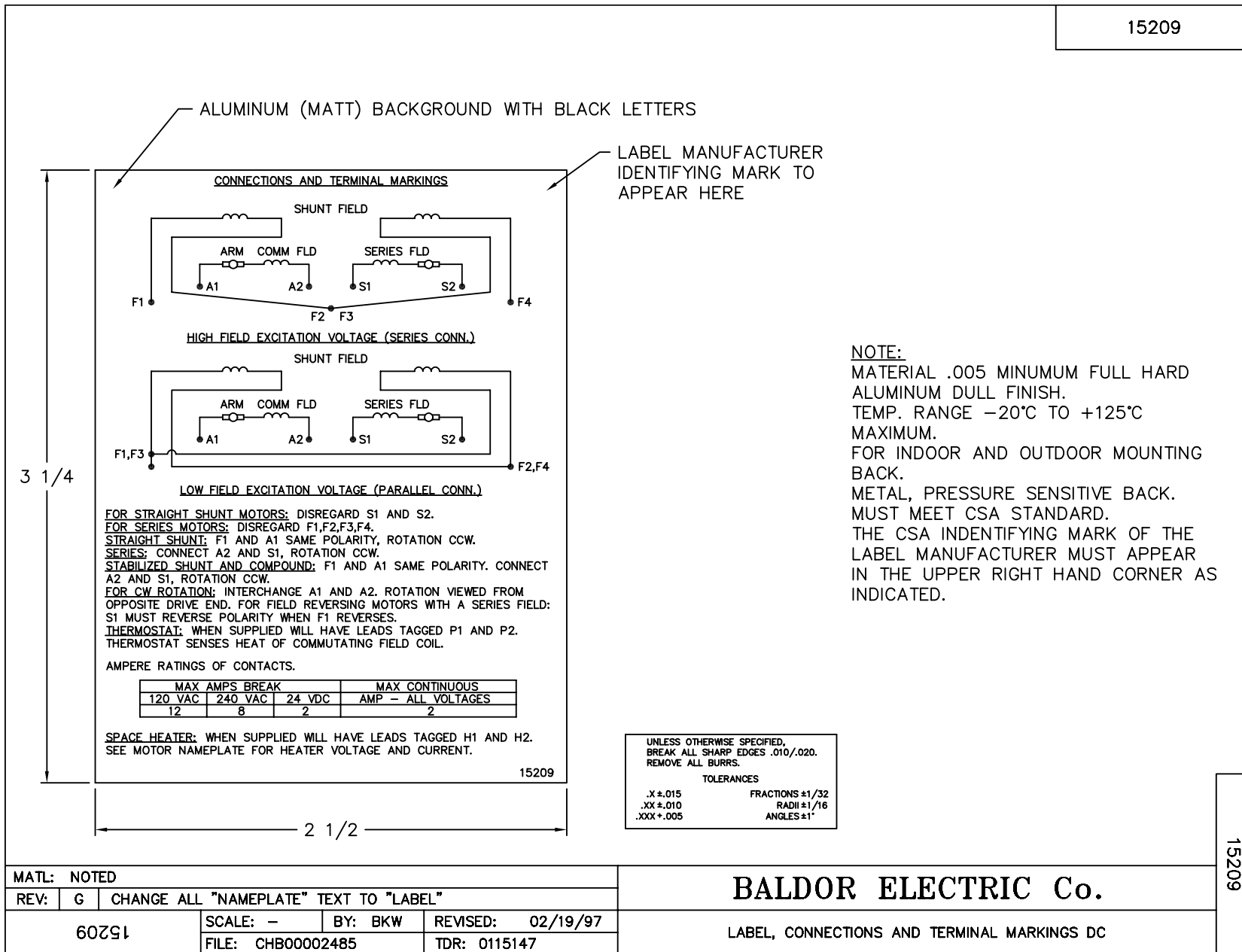
5HP/1750RPM/D PHASE/DPFG/NEMA186AT

Copyright © All product information within this document is subject to Baldor Electric Company copyright © protection, unless otherwise noted.

Part Detail			
Type:	DC	Prod. Type:	TR
Power Code:	D	Weight:	162
Frame Group:	L 0186AT	Mounting Pos.:	F3
HP:	5	Enclosure:	DPFG
RPM:	1750/2300	Wound:	STR. SHUNT
Service Factor:	1.0	Arm V:	500
Arm A:	8.50	Field V:	150/ 300
Field A:	1.78/.89	Field A Hot:	1.34-.62/.67-.3
Insulation Class:	F	Ambient:	40
Duty:	CONT	DE Bearing:	6206
ODE Bearing:	6205	Brushes:	18044-1
Brush Qty.:			



15209




REL. S. O.	FRAME	RATING	RPM	ARM. VOLTS	ARM. AMPS
	L186	5.00HP	1750	500	8.50
WINDING TYPE		S.F.	ENCL.	AMB °C/INSUL	DUTY
STRAIGHT SHUNT		1.0	DRG	40/F	CONT
					300
POWER CODE	TYPE	WK 2 (LB-FT ²)	HOT ARM. CIR. RES.	FLD. AMPS@25 °C	HOT FIELD RES
D	TR	.7353	5.41	.888	448

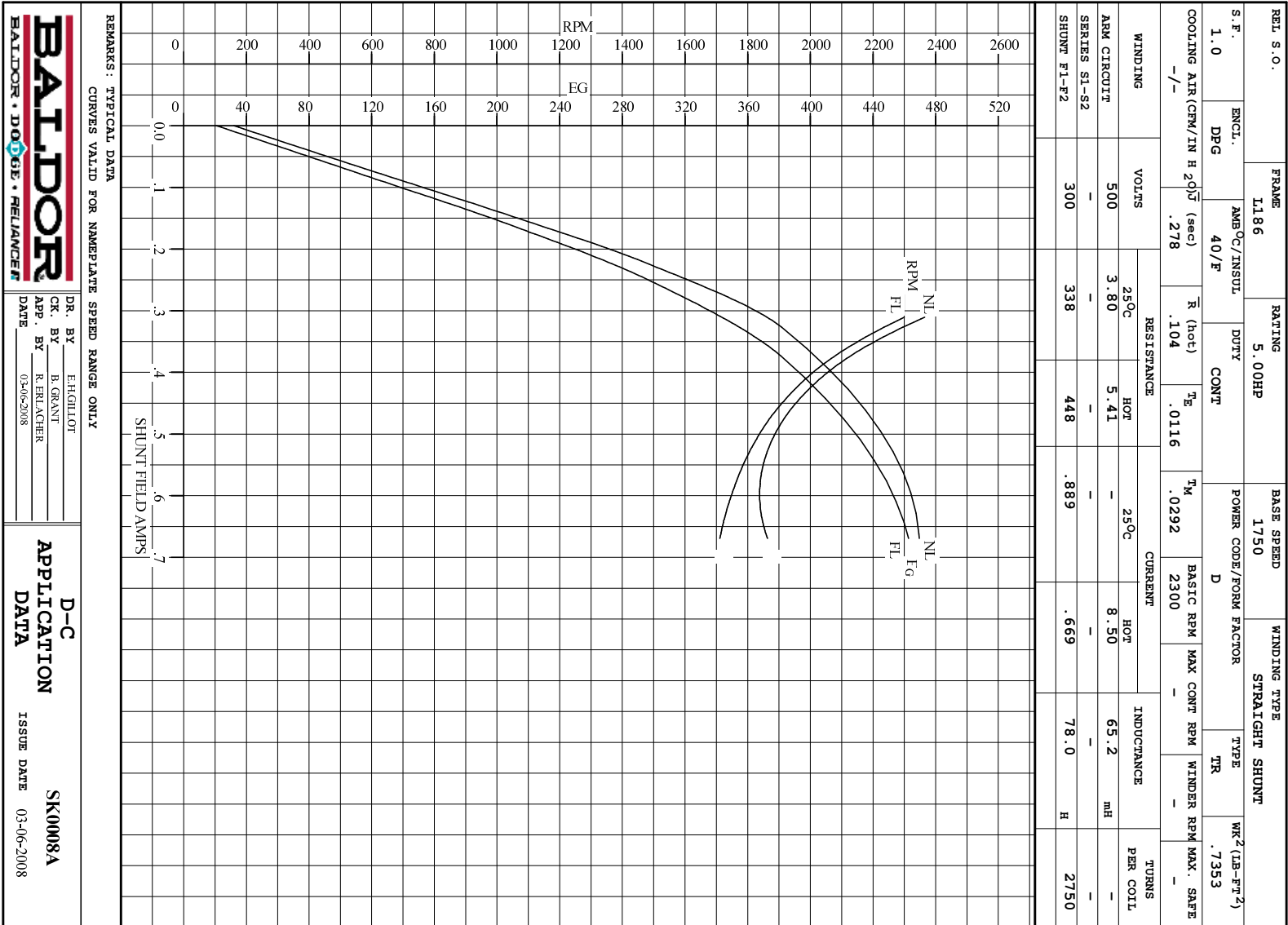
ARM. CIR. IND. (mh)	FIELD IND. (H)	COOLING AIR (CFM/IN H 20)	TURNS PER COIL SHUNT/SERIES	TEST DATE
65.1	78.0	-/-	2750/.00000	-

LOAD PERFORMANCE					
LOAD	AMPERES	TORQUE IN LB.-FT.	OUTPUT IN HP	RPM	% EFFICIENCY
NO LOAD	.30	0	0	1855	0
1/4	2.1	3.43	1.19	1819	68.8
2/4	4.2	7.42	2.51	1775	79.3
3/4	6.4	11.3	3.76	1750	81.8
4/4	8.5	15.1	4.93	1719	82.0
O.L.	13	22.2	7.07	1669	79.8

RPM VS. FIELD AMPS		Eg VS. FIELD AMPS		
FIELD AMPS	RPM N.L.	RPM F.L.	Eg N.L. @ BASE SPEED	Eg F.L. @ BASE SPEED
.669	1854	1718	469	462
.579	1840	1761	464	449
.490	1897	1850	450	428
.400	2055	2008	420	394
.310	2364	2300	370	343

REMARKS: TYPICAL DATA

	DR. BY E. H. GILLIOT	D-C MOTOR PERFORMANCE DATA DK00008A ISSUE DATE 03-06-2008
	CK. BY B. GERANT APP. BY R. ERLACHER DATE 03-06-2008	



BALDOR
BALDOR • DOUG • RELIANCE

DR. BY E.H.GILLOT
CK. BY B.GRANT
APP. BY R.RELAGHER
DATE 03-06-2008

D-C APPLICATION DATA

SK0008A
ISSUE DATE 03-06-2008

