

# **BALDOR**® • *RELIANCE*

## **Product Information Packet**

### **D50100P**

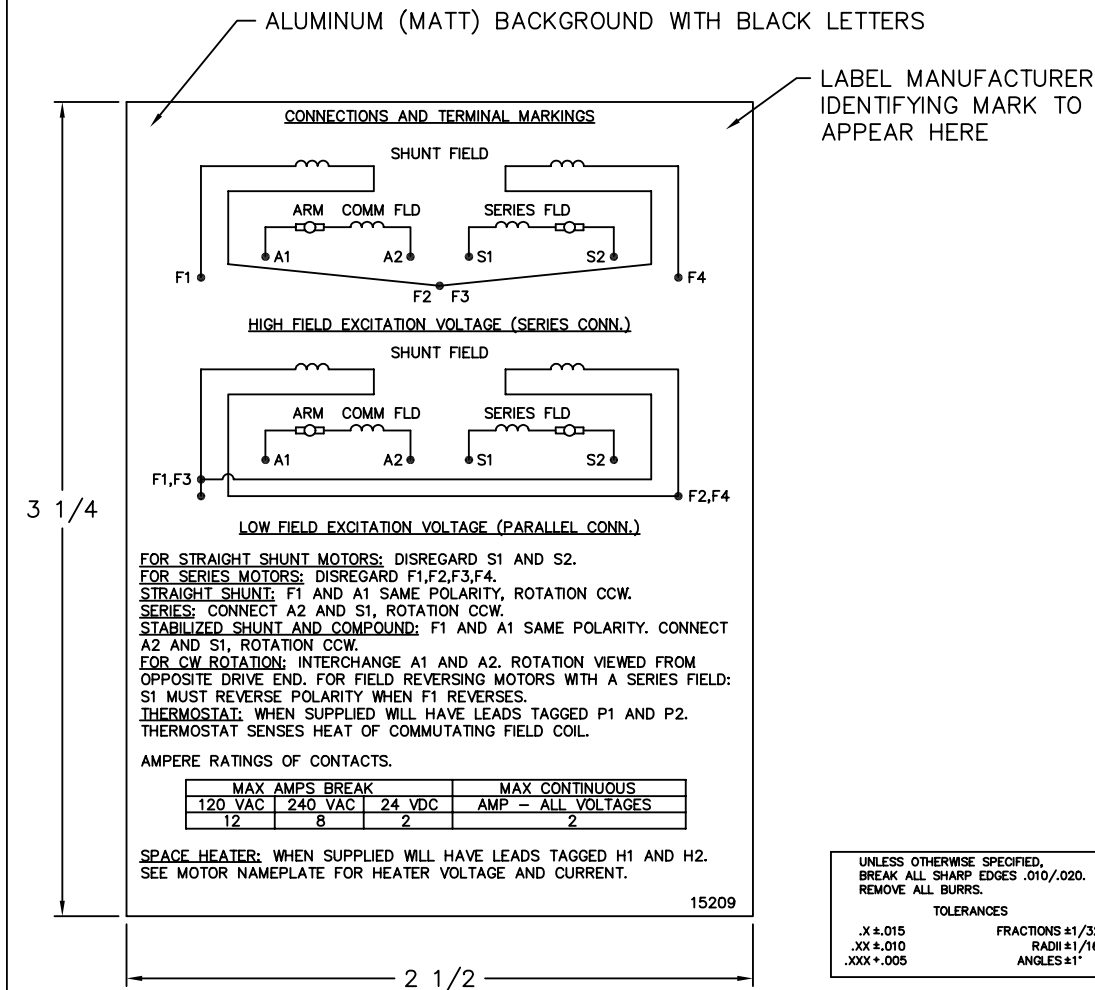
**100HP, 1750/2000RPM, DC, 368AT, DPFG, FX, N**

Copyright © All product information within this document is subject to Baldor Electric Company copyright © protection, unless otherwise noted.

Part Detail			
Type:	DC	Prod. Type:	T
Power Code:	D	Weight:	1100
Frame Group:		Mounting Pos.:	F1
HP:	100	Enclosure:	DPFG
RPM:	1750/2000	Wound:	STR. SHUNT
Service Factor:	1.0	Arm V:	500
Arm A:	158.00	Field V:	150/ 300
Field A:	8.84/4.42	Field A Hot:	6.00-4.70/3.00-
Insulation Class:	F	Ambient:	40
Duty:	CONT	DE Bearing:	6213
ODE Bearing:	6211	Brushes:	36024-3
Brush Qty.:			



15209



**NOTE:**  
 MATERIAL .005 MINIMUM FULL HARD ALUMINUM DULL FINISH.  
 TEMP. RANGE -20°C TO +125°C MAXIMUM.  
 FOR INDOOR AND OUTDOOR MOUNTING BACK.  
 METAL, PRESSURE SENSITIVE BACK. MUST MEET CSA STANDARD.  
 THE CSA IDENTIFYING MARK OF THE LABEL MANUFACTURER MUST APPEAR IN THE UPPER RIGHT HAND CORNER AS INDICATED.

MATL: NOTED			
REV:	G	CHANGE ALL "NAMEPLATE" TEXT TO "LABEL"	
60291	SCALE: -	BY: BKW	REVISED: 02/19/97
	FILE: CHB00002485	TDR: 0115147	

**BALDOR ELECTRIC Co.**

LABEL, CONNECTIONS AND TERMINAL MARKINGS DC

15209

REL. S. O.	FRAME	RATING	RPM	ARM. VOLTS	ARM. AMPS
	368	100HP	1750	500	158
WINDING TYPE		S. F.	ENCL.	AMB °C/INSUL	DUTY
STRAIGHT SHUNT		1.0	DRG	40/F	CONT
					300
POWER CODE	TYPE	WK 2 (LB-FT <sup>2</sup> )	HOT ARM. CIR. RES.	FLD. AMPS@25 °C	HOT FIELD RES
D	T	20.10	.0942	4.41	99.8

ARM. CIR. IND. (mh)	FIELD IND. (H)	COOLING AIR (CFM/IN H 20)	TURNS PER COIL SHUNT/SERIES	TEST DATE
2.31	53.4	-/-	1250/.00000	-

LOAD PERFORMANCE


LOAD	AMPERES	TORQUE IN LB.-FT.	OUTPUT IN HP	RPM	% EFFICIENCY
NO LOAD	1.9	0	0	1724	0
1/4	40	75.9	24.8	1717	87.6
2/4	79	155	50.4	1711	90.7
3/4	119	233	75.5	1703	91.5
4/4	158	308	100	1706	92.0
O.L.	237	448	147	1730	91.1

RPM VS. FIELD AMPS

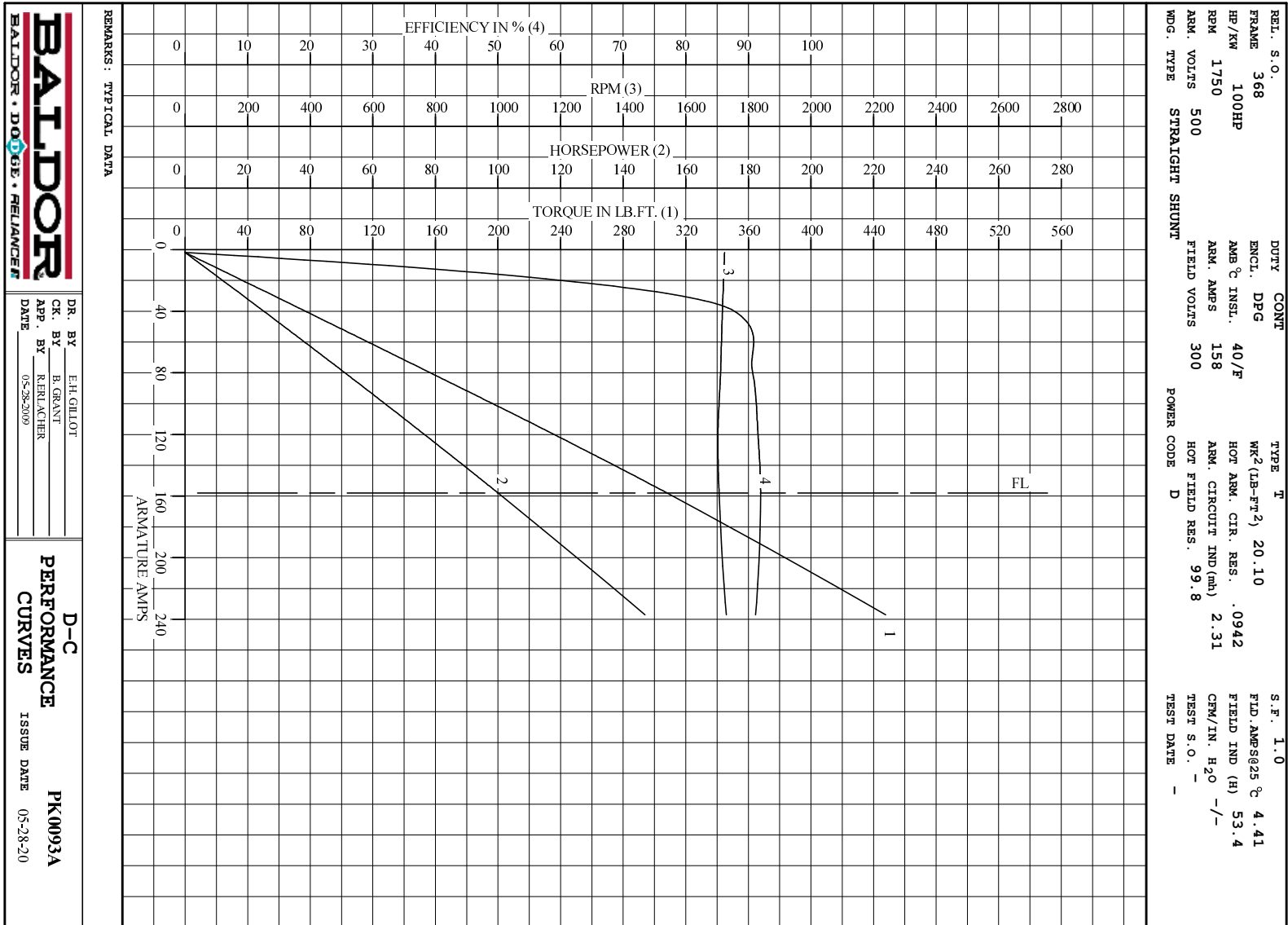
Eg VS. FIELD AMPS

FIELD AMPS	RPM N. L.	RPM F. L.	Eg N. L. @ BASE SPEED	Eg F. L. @ BASE SPEED
3.00	1724	1706	506	495
2.74	1812	1793	484	471
2.49	1926	1913	455	441
2.23	2083	2078	420	406
1.97	2298	2300	379	367

REMARKS: TYPICAL DATA

	DR. BY E. H. GILLOT	<b>D-C MOTOR PERFORMANCE DATA</b> DK0093A ISSUE DATE 05-28-2009
	CK. BY B. GRANT APP. BY R. BRANCHER DATE 05-28-2009	





**BALDOR**  
BALDOR • DOUG • RELIANCE

DR. BY E.H.GILLOT  
 CK. BY B.GRANT  
 APP. BY R.FERLACHER  
 DATE 05-28-2009

**D-C**  
**PERFORMANCE**  
**CURVES** ISSUE DATE 05-28-20  
**PK0093A**