

BALDOR® • ***RELIANCE***

Product Information Packet

D5010P

10HP,1750/2300RPM,DC,219AT,DPFG,F1

Copyright © All product information within this document is subject to Baldor Electric Company copyright © protection, unless otherwise noted.

| Part Detail | | | |
|-------------------|-----------|----------------|-----------------|
| Type: | DC | Prod. Type: | T |
| Power Code: | D | Weight: | 255 |
| Frame Group: | 0219AT | Mounting Pos.: | F1 |
| HP: | 10 | Enclosure: | DPFG |
| RPM: | 1750/2300 | Wound: | STR. SHUNT |
| Service Factor: | 1.0 | Arm V: | 500 |
| Arm A: | 17.20 | Field V: | 150/ 300 |
| Field A: | 3.42/1.71 | Field A Hot: | 2.34-1.40/1.17- |
| Insulation Class: | F | Ambient: | 40 |
| Duty: | CONT | DE Bearing: | 6207 |
| ODE Bearing: | 6207 | Brushes: | 150986-21-2 |
| Brush Qty.: | | | |

876-1

1/2-13UNC-2B THD X 1.00 DEEP
4-HOLES EQUALLY SPACED
ON A 7.250 DIA. B.C.

3/8-16 UNC-2B THD'S
.88 DEEP IN SHAFT END

8.498
8.500 DIA.

.40
.19

1.1245
1.1250 DIA.

ACCESSORY 'C' FACE

STANDARD COMM END
FOR SINGLE SHAFT EXTENSION

FC
C
.75 ACCESSORY 'C' FACE
.40
.19
N
FN
FU
FV
BS
2F
B
BA
N-W
AIR IN
AIR OUT
XL
AF
J
E
2E
A
D
O
P
AB
AC
P
AB
AC
XL
AF
J
E
2E
A

| FRAME | FOOT MOUNTING | | | | | D.E. SHAFT EXTENSION | | | | | DRIVE KEY | | | ACC SHAFT | | | ACC KEY | | FRAME | | | | | | |
|--------|---------------|------|-------|-----|------|----------------------|------|------|-------|-------------------|-----------|---------|----------|-----------|-------|------|---------|----------|-------|-------|-------|-------|-------------------|-------|-------|
| | BA | E | 2F | G | H | J | N | N-W | U | V | W | KEY-SQ. | KEY-LONG | FN | FU | FV | KEY-SQ. | KEY-LONG | A | B | C | FC | D | O | P |
| 218AT | 3.50 | 4.25 | 10.00 | .50 | .406 | 2.00 | 3.00 | 2.75 | 1.375 | 2.50 ³ | .25 | .312 | 1.75 | 2.44 | 1.125 | 2.19 | .250 | 2.25 | 10.38 | 11.00 | 24.25 | 25.93 | 5.25 ² | 10.47 | 10.44 |
| 219AT | 3.50 | 4.25 | 11.00 | .50 | .406 | 2.00 | 3.00 | 2.75 | 1.375 | 2.50 ³ | .25 | .312 | 1.75 | 2.44 | 1.125 | 2.19 | .250 | 2.25 | 10.38 | 12.00 | 25.25 | 26.93 | 5.25 ² | 10.47 | 10.44 |
| 2110AT | 3.50 | 4.25 | 12.50 | .50 | .406 | 2.00 | 3.00 | 2.75 | 1.375 | 2.50 ³ | .25 | .312 | 1.75 | 2.44 | 1.125 | 2.19 | .250 | 2.25 | 10.38 | 13.50 | 26.75 | 28.43 | 5.25 ² | 10.47 | 10.44 |
| 258AT | 4.25 | 5.00 | 12.50 | .69 | .531 | 2.25 | 3.44 | 3.25 | 1.625 | 3.00 ³ | .19 | .375 | 2.31 | 3.33 | 1.375 | 3.08 | .312 | 3.00 | 12.38 | 14.00 | 27.25 | 29.84 | 6.25 ² | 12.47 | 12.44 |
| 259AT | 4.25 | 5.00 | 14.00 | .69 | .531 | 2.25 | 3.44 | 3.25 | 1.625 | 3.00 ³ | .19 | .375 | 2.31 | 3.33 | 1.375 | 3.08 | .312 | 3.00 | 12.38 | 15.50 | 28.75 | 31.34 | 6.25 ² | 12.47 | 12.44 |
| 2510AT | 4.25 | 5.00 | 16.00 | .69 | .531 | 2.25 | 3.44 | 3.25 | 1.625 | 3.00 ³ | .19 | .375 | 2.31 | 3.33 | 1.375 | 3.08 | .312 | 3.00 | 12.38 | 17.56 | 30.75 | 33.34 | 6.25 ² | 12.47 | 12.44 |
| 2513AT | 4.25 | 5.00 | 22.00 | .69 | .531 | 2.25 | 3.44 | 3.25 | 1.625 | 3.00 ³ | .19 | .375 | 2.31 | 3.33 | 1.375 | 3.08 | .312 | 3.00 | 12.38 | 23.50 | 36.75 | 39.34 | 6.25 ² | 12.47 | 12.44 |

| FRAME | CONDUIT BOX | | | | | | | ARM APPROX. WK ² LBS.FT. ² | APPROXIMATE WEIGHT |
|--------|-------------|------|------|------|-------|------|------|--------------------------------------------------|--------------------|
| | AA | AB | AC | AF | BS | XL | XN | | |
| 218AT | 3/4-1 | 7.91 | 6.44 | 2.44 | 8.38 | 3.81 | 3.12 | 1.35 | 242 ⁵ |
| 219AT | 3/4-1 | 7.91 | 6.44 | 2.44 | 9.38 | 3.81 | 3.12 | 1.49 | 260 ⁵ |
| 2110AT | 3/4-1 | 7.91 | 6.44 | 2.44 | 10.88 | 3.81 | 3.12 | 1.71 | 286 ⁵ |
| 258AT | 1 1/4 | 9.35 | 7.72 | 2.94 | 9.75 | 4.94 | 4.00 | 2.91 | 366 ⁵ |
| 259AT | 1 1/4 | 9.35 | 7.72 | 2.94 | 11.25 | 4.94 | 4.00 | 3.31 | 411 ⁵ |
| 2510AT | 1 1/4 | 9.35 | 7.72 | 2.94 | 13.25 | 4.94 | 4.00 | 3.80 | 471 ⁵ |
| 2513AT | 1 1/4 | 9.35 | 7.72 | 2.94 | 19.25 | 4.94 | 4.00 | 5.27 | 532 ⁵ |

1) SHAFT DIAMETERS TO 1.500 TOLERANCE +.0000 - .0005
SHAFT DIAMETERS ABOVE 1.500 TOLERANCE +.0000 - .0010
SHAFT DIAMETERS TO 1.625 RUNOUT .002 T.I.R. MAX.
SHAFT DIAMETERS ABOVE 1.625 RUNOUT .003 T.I.R. MAX.
2) 'D' DIMENSION TOLERANCE +.000 - .060
3) 'V' DIMENSION IS MAX. HUB LENGTH ON SHAFT
4) CONDUIT BOX CAN BE ROTATED IN 90° STEPS ON ITS OWN AXIS.
5) TOTAL WEIGHT OF MOTOR.
6) ALL DIMENSIONS NOT NOTED ARE NOMINAL DIMENSIONS CONSULT FACTORY FOR TOLERANCES.

FOR F1 OR F2 CONDUIT BOX LOCATION SEE SALES ORDER

CUSTOMER IS RESPONSIBLE FOR DETERMINING THAT BALDOR'S PRODUCT WILL PERFORM SUITABLY IN THE INTENDED APPLICATION.

| | | |
|----------------------------------------------|------------------------------|-------------------|
| REV. DESC: REV. 'D' DIM TO +.000 - .060 ONLY | | |
| REV. LTR: B | VERSION: 01 | TDR: 000000752566 |
| FILE: \RGG\00019\505 | REVISED: 09:35:03 06/20/2012 | BY: RGNAS |
| MTL: - | | |

BALDOR
DIM SHEET,218AT-2513AT,DPFG,STD
SH 1 of 1

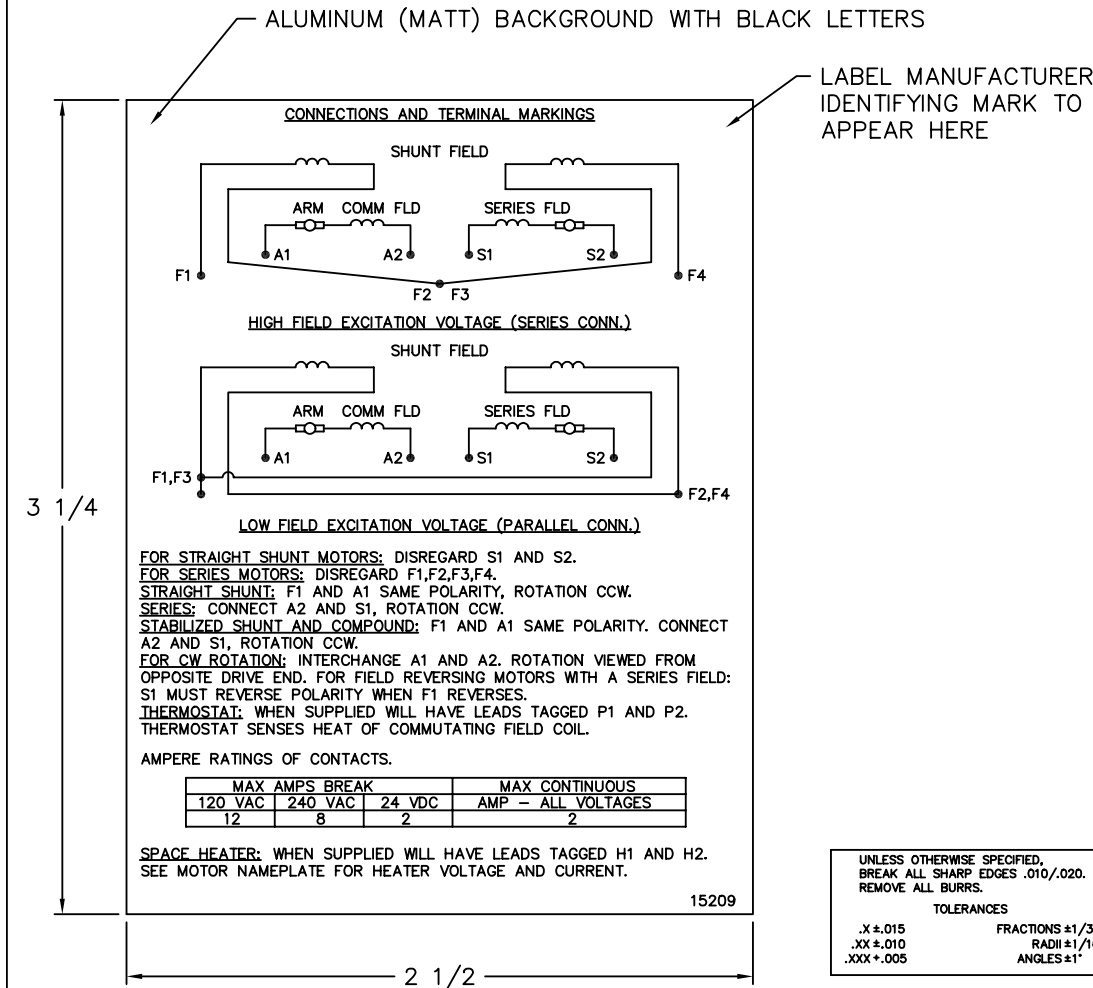
1-9-08

Page 3 of 7

BALDOR
A MEMBER OF THE ABB GROUP

For Baldor Sales and Support, Please Contact: Walker EMD • <http://www.walkeremd.com> • Toll-Free: (800) 876-4444 • Phone: (203) 426-7700 • Fax: (203) 426-7800

15209



NOTE:
 MATERIAL .005 MINIMUM FULL HARD ALUMINUM DULL FINISH.
 TEMP. RANGE -20°C TO +125°C MAXIMUM.
 FOR INDOOR AND OUTDOOR MOUNTING BACK.
 METAL, PRESSURE SENSITIVE BACK. MUST MEET CSA STANDARD.
 THE CSA IDENTIFYING MARK OF THE LABEL MANUFACTURER MUST APPEAR IN THE UPPER RIGHT HAND CORNER AS INDICATED.

| | | | |
|-------------|-------------------|----------------------------------------|-------------------|
| MATL: NOTED | | | |
| REV: | G | CHANGE ALL "NAMEPLATE" TEXT TO "LABEL" | |
| 60291 | SCALE: - | BY: BKW | REVISED: 02/19/97 |
| | FILE: CHB00002485 | TDR: 0115147 | |

BALDOR ELECTRIC Co.

LABEL, CONNECTIONS AND TERMINAL MARKINGS DC

15209


| | | | | | |
|----------------|-------|----------------|------------------|-----------------|---------------|
| REL S.O. | FRAME | RATING | RPM | ARM. VOLTS | ARM. AMPS |
| | 219AT | 10.0HP | 1750 | 500 | 17.2 |
| WINDING TYPE | | S.F. | ENCL. | AMB °C/INSUL | DUTY |
| STRAIGHT SHUNT | | 1.0 | DRG | 40/F | CONT |
| | | | | | 300 |
| POWER CODE | TYPE | WK 2 (LB-FT 2) | HOT ARM.CIR.RES. | FLD. AMPS@25 °C | HOT FIELD RES |
| D | T | 1.201 | 2.79 | 1.88 | 220 |

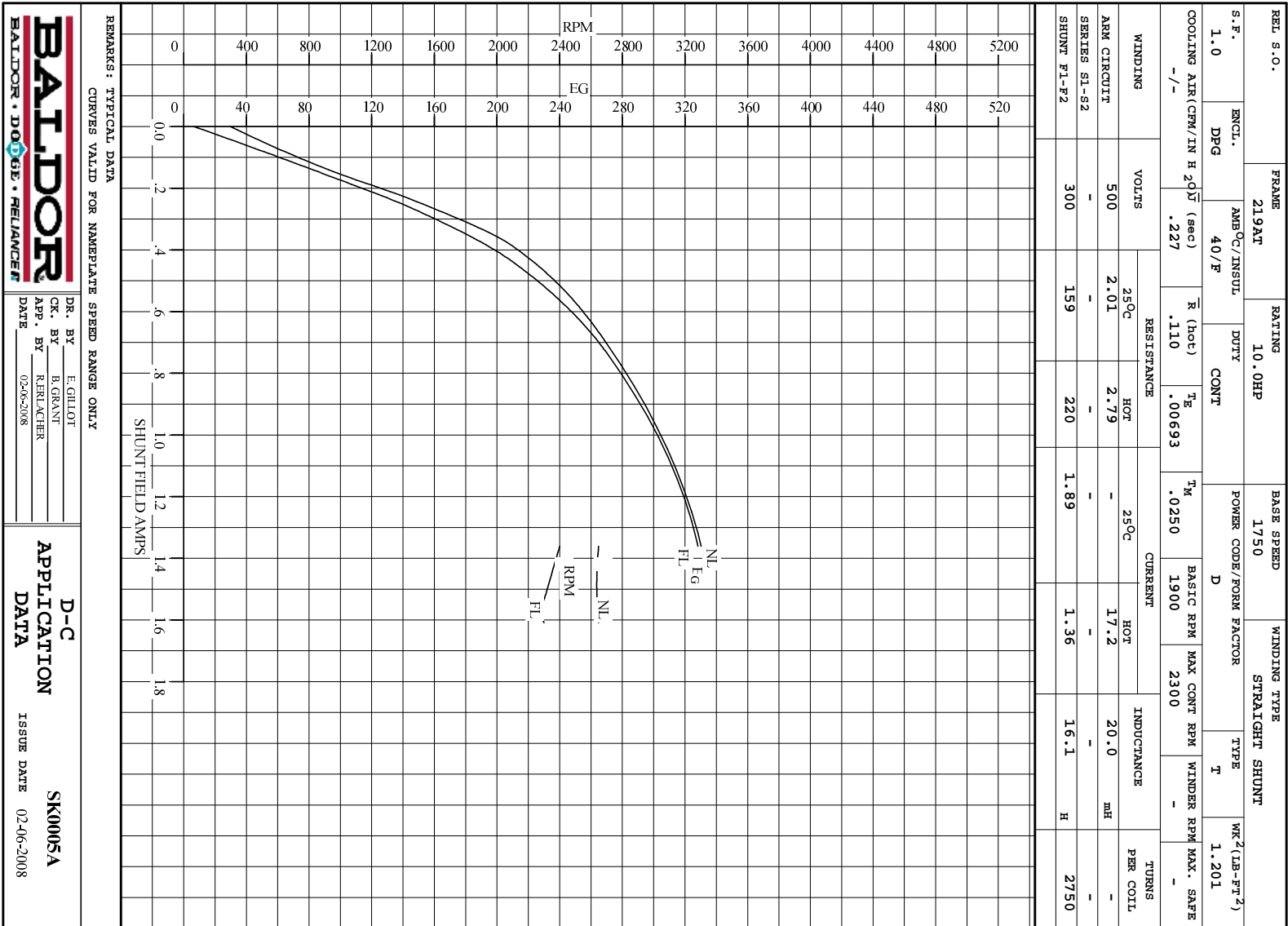
| | | | | |
|---------------------|----------------|--------------------------|-----------------------------|-----------|
| ARM. CIR. IND. (mh) | FIELD IND. (H) | COOLING AIR(CFM/IN H 20) | TURNS PER COIL SHUNT/SERIES | TEST DATE |
| 20.0 | 16.1 | -/- | 2750/.00000 | - |

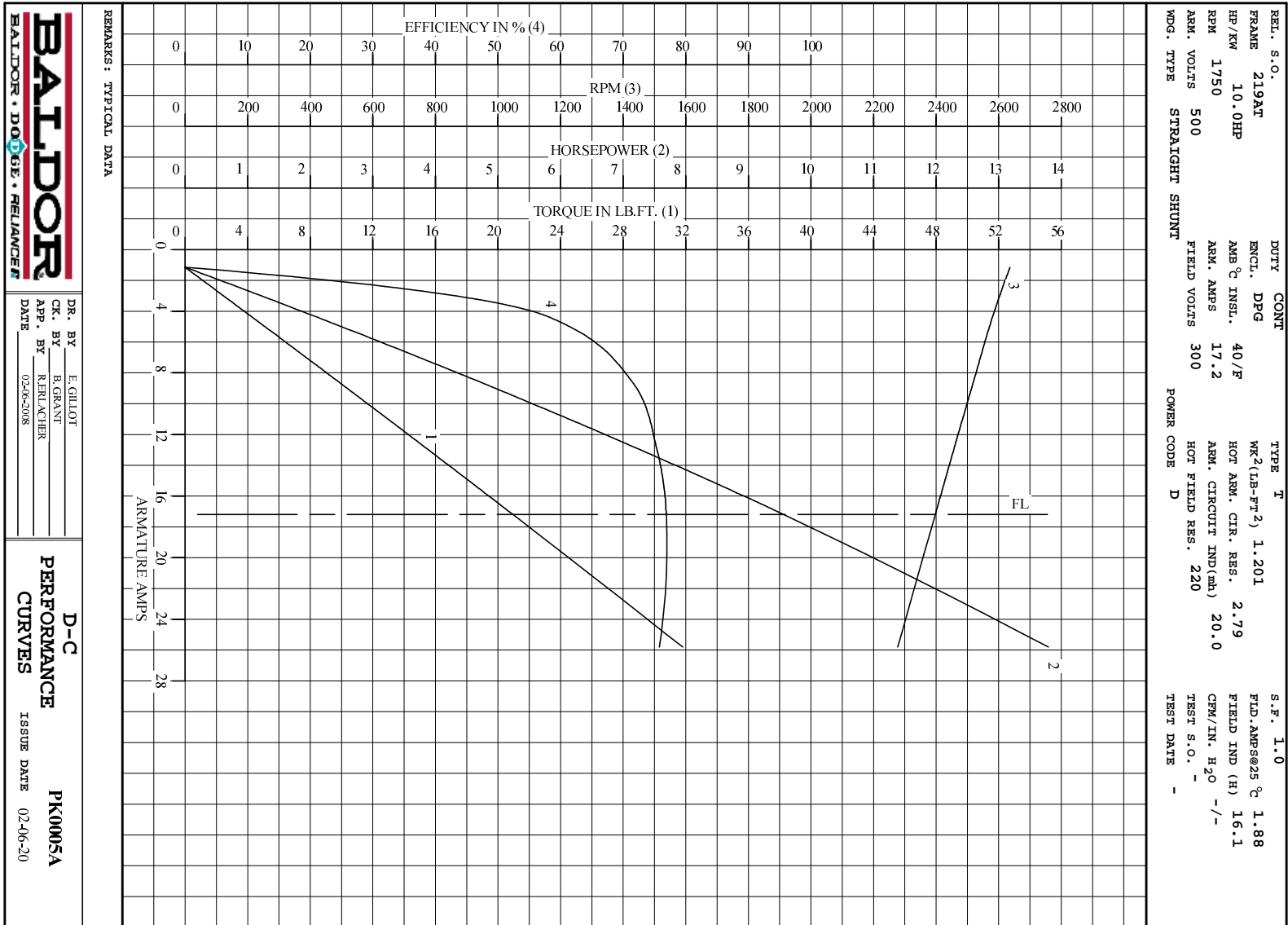
| LOAD PERFORMANCE | | | | | |
|------------------|---------|-------------------|--------------|------|--------------|
| LOAD | AMPERES | TORQUE IN LB.-FT. | OUTPUT IN HP | RPM | % EFFICIENCY |
| NO LOAD | 1.1 | 0 | 0 | 2636 | 0 |
| 1/4 | 4.3 | 4.18 | 2.05 | 2581 | 57.7 |
| 2/4 | 8.6 | 9.83 | 4.72 | 2519 | 71.5 |
| 3/4 | 13 | 15.4 | 7.22 | 2458 | 75.4 |
| 4/4 | 17 | 21.0 | 9.56 | 2397 | 76.9 |
| O.L. | 26 | 31.8 | 13.8 | 2277 | 75.8 |

| RPM VS. FIELD AMPS | | Eg VS. FIELD AMPS | | |
|--------------------|----------|-------------------|----------------------|----------------------|
| FIELD AMPS | RPM N.L. | RPM F.L. | Eg N.L. @ BASE SPEED | Eg F.L. @ BASE SPEED |
| 1.36 | 2636 | 2397 | 330 | 328 |
| 1.52 | 2637 | 2305 | 353 | 341 |
| 1.68 | 2672 | 2368 | 378 | 355 |
| 1.85 | 2765 | 2701 | 404 | 368 |
| 2.01 | 2636 | 2397 | 330 | 328 |

REMARKS: TYPICAL DATA

| | | |
|-----------------------------------------------------------------------------------|-----------------------------------------|-----------------------------------------------------------------------|
|  | DR. BY E. GILLLOT | D-C MOTOR PERFORMANCE DATA DK0005A ISSUE DATE 02-06-2008 |
| | CK. BY B. GRANT | |
| | APP. BY R. RELANCHER DATE 02-06-2008 | |





DR. BY E.GILLOT
CK. BY B.GRANT
APP. BY R.FELACHER
DATE 02-06-2008

D-C
PERFORMANCE
CURVES ISSUE DATE 02-06-20
PK0005A