

# **BALDOR**® • **RELIANCE**

## **Product Information Packet**

# **D50125P**

**125HP, 1750/2000RPM, DC, 407AT, DPFG, FX, N**

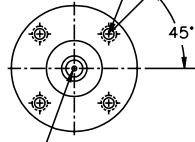
Copyright © All product information within this document is subject to Baldor Electric Company copyright © protection, unless otherwise noted.

Part Detail			
Type:	DC	Prod. Type:	T
Power Code:	D	Weight:	1445
Frame Group:	0407AT	Mounting Pos.:	F1
HP:	125	Enclosure:	DPFG
RPM:	1750/2000	Wound:	STR. SHUNT
Service Factor:	1.0	Arm V:	500
Arm A:	200.00	Field V:	150/ 300
Field A:	9.18/4.59	Field A Hot:	6.00-5.14/3.00-
Insulation Class:	F	Ambient:	40
Duty:	CONT	DE Bearing:	6214
ODE Bearing:	6213	Brushes:	40019-3
Brush Qty.:			

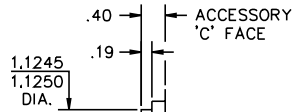
CUSTOMER NAME			MODEL NO.			MTG.		REMARKS:		
CUSTOMER P.O.			FRAME		R.P.M.	PHASE		INSUL		
CERTIFIED BY			H.P.		TYPE	VOLTS		AMB.		
DATE						ENCL		SHEET 2 OF 3		

UNITS: INCH	SCALE: NONE	PROPORTION: NONE	PART NUMBER	DWG. SIZE
			877	A

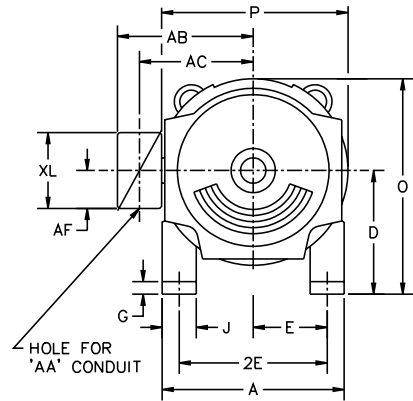
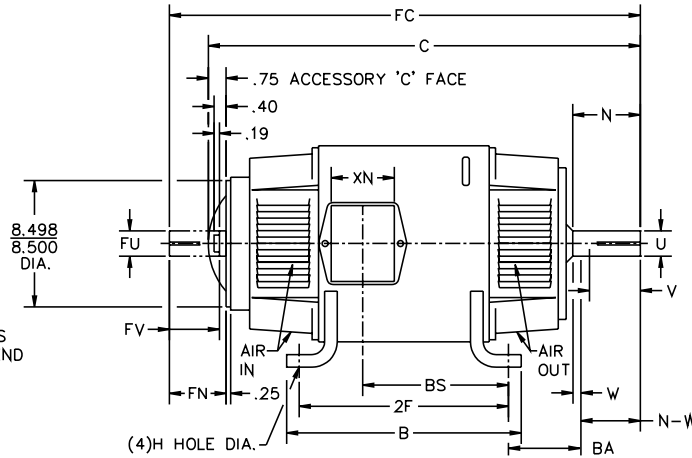
1/2-13UNC-2B THD X 1.00 DEEP  
4-HOLES EQUALLY SPACED  
ON A 7.250 DIA. B.C.



1/2-13 UNC-2B THD'S  
1.00 DEEP IN SHAFT END



STANDARD COMM END  
FOR SINGLE SHAFT EXTENSION



FRAME	FOOT MOUNTING					D.E. SHAFT EXTENSION					DRIVE KEY		ACC SHAFT EXTENSION			ACC KEY		FRAME							
	BA	E	2F	G	H	J	N	N-W	U	V	W	KEY-SQ.	KEY-LONG	FN	FU	FV	KEY-SQ.	KEY-LONG	A	B	C	FC	D	O	P
407AT	6.63	8.00	18.00	.81	.938	4.00	5.44	5.25	2.625	5.00 <sup>3</sup>	.19	.625	4.00	4.95	2.375	4.70	.625	3.50	20.00	20.00	40.13	44.34	10.00 <sup>2</sup>	20.19	20.38
L407AT	6.63	8.00	18.00	.81	.938	4.00	5.44	5.25	2.625	5.00 <sup>3</sup>	.19	.625	4.00	4.95	2.375	4.70	.625	3.50	20.00	20.00	41.25	45.46	10.00 <sup>2</sup>	20.19	20.38
409AT	6.63	8.00	22.00	.81	.938	4.00	5.44	5.25	2.625	5.00 <sup>3</sup>	.19	.625	4.00	4.95	2.375	4.70	.625	3.50	20.00	24.00	44.63	48.84	10.00 <sup>2</sup>	20.19	20.38
L409AT	6.63	8.00	22.00	.81	.938	4.00	5.44	5.25	2.625	5.00 <sup>3</sup>	.19	.625	4.00	4.95	2.375	4.70	.625	3.50	20.00	24.00	45.75	49.96	10.00 <sup>2</sup>	20.19	20.38
L4011AT	6.63	8.00	28.00	.81	.938	4.00	5.44	5.25	2.625	5.00 <sup>3</sup>	.19	.625	4.00	4.95	2.375	4.70	.625	3.50	20.00	30.00	52.75	56.96	10.00 <sup>2</sup>	20.19	20.38

FRAME	CONDUIT BOX							ARM APPROX. WK <sup>2</sup> LBS.FT. <sup>2</sup>	APPROXIMATE WEIGHT
	AA	AB	AC	AF	BS	XL	XN		
407AT	3	18.28	14.45	3.34	14.50	11.63	7.76	35.47	1317 <sup>5</sup>
L407AT	3	18.28	14.45	3.34	15.62	11.63	7.76	35.47	1367 <sup>5</sup>
409AT	3	18.28	14.45	3.34	19.00	11.63	7.76	43.81	1613 <sup>5</sup>
L409AT	3	18.28	14.45	3.34	20.12	11.63	7.76	43.81	1663 <sup>5</sup>
L4011AT	4	19.28	14.63	3.50	27.70	13.40	13.50	55.64	2260 <sup>5</sup>

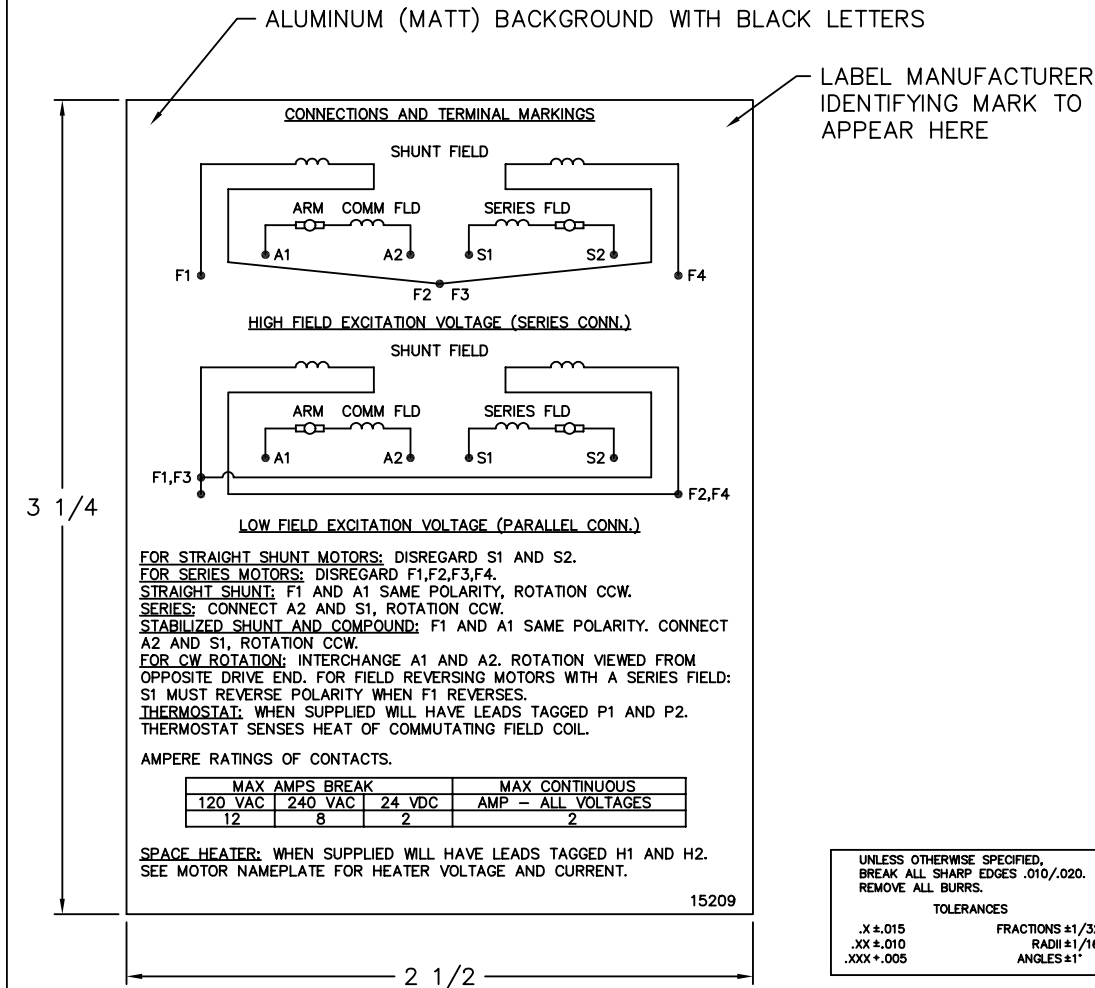
- 1) SHAFT DIAMETERS TO 1.500 TOLERANCE +.0000 - .0005  
SHAFT DIAMETERS ABOVE 1.500 TOLERANCE +.0000 - .0010  
SHAFT DIAMETERS TO 1.625 RUNOUT .002 T.I.R. MAX.  
SHAFT DIAMETERS ABOVE 1.625 RUNOUT .003 T.I.R. MAX.
- 2) 'D' DIMENSION TOLERANCE +.000 - .060
- 3) 'Y' DIMENSION IS MAX. HUB LENGTH ON SHAFT
- 4) CONDUIT BOX CAN BE ROTATED IN 90° STEPS ON ITS OWN AXIS.
- 5) TOTAL WEIGHT OF MOTOR.
- 6) ALL DIMENSIONS NOT NOTED ARE NOMINAL DIMENSIONS CONSULT FACTORY FOR TOLERANCES.

FOR F1 OR F2 CONDUIT BOX  
LOCATION SEE SALES ORDER

B	54100	ADD L4011AT FRAME	CSL	3-16-1994
REV.	ECO.	DESCRIPTION	BY	DATE

DESIGNER CSL 7-19-91	<b>BALDOR</b>
ENGINEER RFL 7-19-91	
ENGINEER DAG 7-19-91	
MANUF. RWL 7-19-91	
TITLE: DIMENSION SHEET DPFG, STD AT SHEET 2 OF 3	
PART NUMBER 877	DWG. SIZE A
REV. B	

15209



**NOTE:**  
 MATERIAL .005 MINIMUM FULL HARD ALUMINUM DULL FINISH.  
 TEMP. RANGE -20°C TO +125°C MAXIMUM.  
 FOR INDOOR AND OUTDOOR MOUNTING BACK.  
 METAL, PRESSURE SENSITIVE BACK. MUST MEET CSA STANDARD.  
 THE CSA IDENTIFYING MARK OF THE LABEL MANUFACTURER MUST APPEAR IN THE UPPER RIGHT HAND CORNER AS INDICATED.

MATL: NOTED			
REV:	G	CHANGE ALL "NAMEPLATE" TEXT TO "LABEL"	
60291	SCALE: -	BY: BKW	REVISED: 02/19/97
	FILE: CHB00002485	TDR: 0115147	

**BALDOR ELECTRIC Co.**

LABEL, CONNECTIONS AND TERMINAL MARKINGS DC

15209


REL. S. O.	FRAME	RATING	RPM	ARM. VOLTS	ARM. AMPS
	407	125HP	1750	500	200
WINDING TYPE		S. F.	ENCL.	AMB °C/INSUL	DUTY
STRAIGHT SHUNT		1.0	DRG	40/F	CONT
					300
POWER CODE		TYPE	WK 2 (LB-FT <sup>2</sup> )	HOT ARM. CIR. RES.	FLD. AMPS@25 °C
D		T	33.26	.0852	4.58
					HOT FIELD RES
					99.8

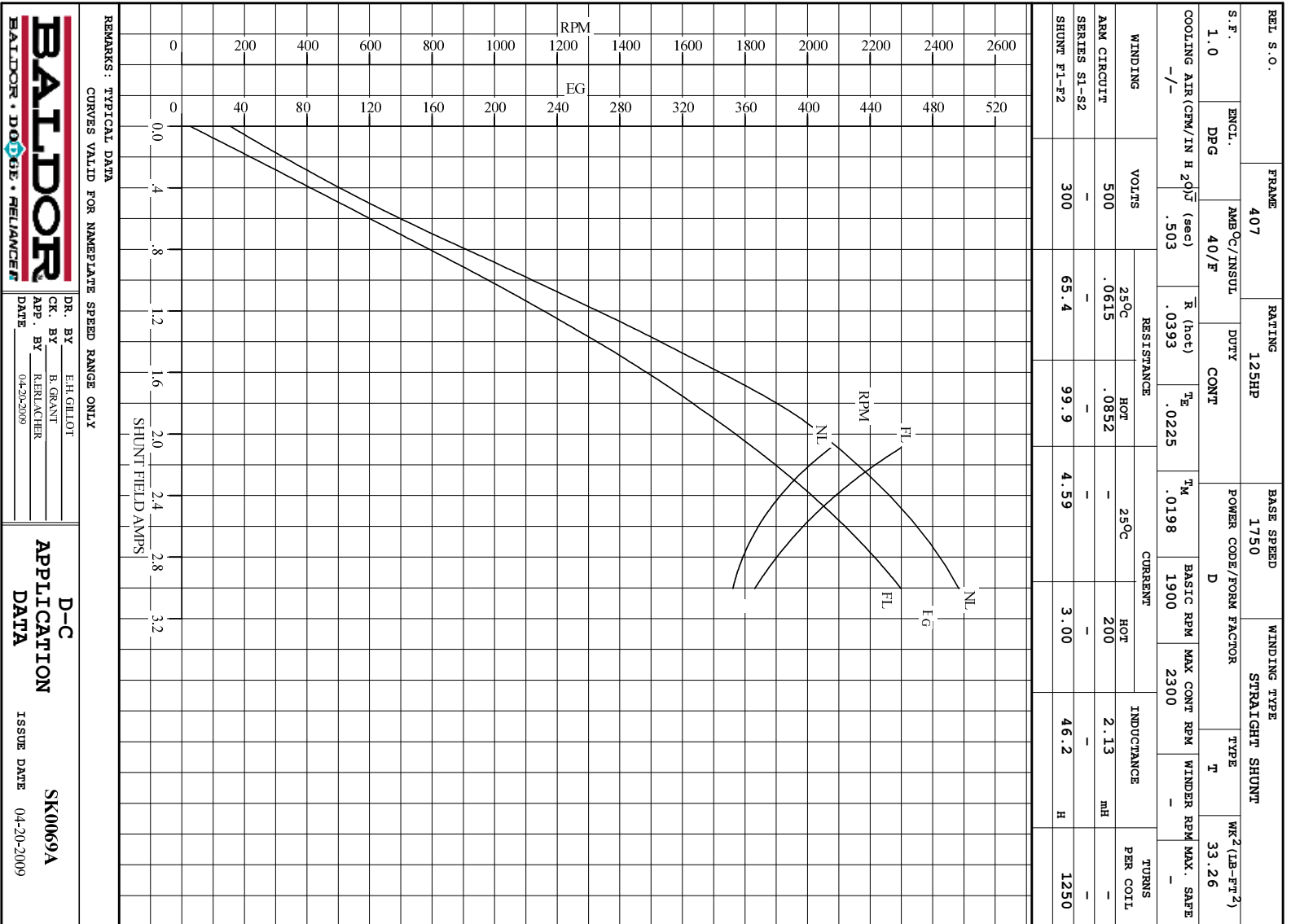
ARM. CIR. IND. (mh)	FIELD IND. (H)	COOLING AIR (CFM/IN H 20)	TURNS PER COIL SHUNT/SERIES	TEST DATE
2.13	46.2	-/-	1250/.00000	-

LOAD PERFORMANCE					
LOAD	AMPERES	TORQUE IN LB.-FT.	OUTPUT IN HP	RPM	% EFFICIENCY
NO LOAD	3.6	0	0	1758	0
1/4	50	91.0	30.5	1759	85.9
2/4	100	186	62.8	1771	90.0
3/4	150	275	94.3	1798	91.3
4/4	200	358	125	1831	91.4
O.L.	300	498	184	1936	90.1

RPM VS. FIELD AMPS			Eg VS. FIELD AMPS		
FIELD AMPS	RPM N.L.	RPM F.L.	Eg N.L. @ BASE SPEED	Eg F.L. @ BASE SPEED	
3.00	1757	1831	496	459	
2.77	1798	1911	487	440	
2.54	1859	2012	472	418	
2.31	1949	2139	450	393	
2.08	2075	2300	422	365	

REMARKS: TYPICAL DATA

	DR. BY E. H. GILLOT	<b>D-C MOTOR PERFORMANCE DATA</b> DK0069A ISSUE DATE 04-20-2009
	CK. BY B. GRANT APP. BY R. BRANCHER DATE 04-20-2009	

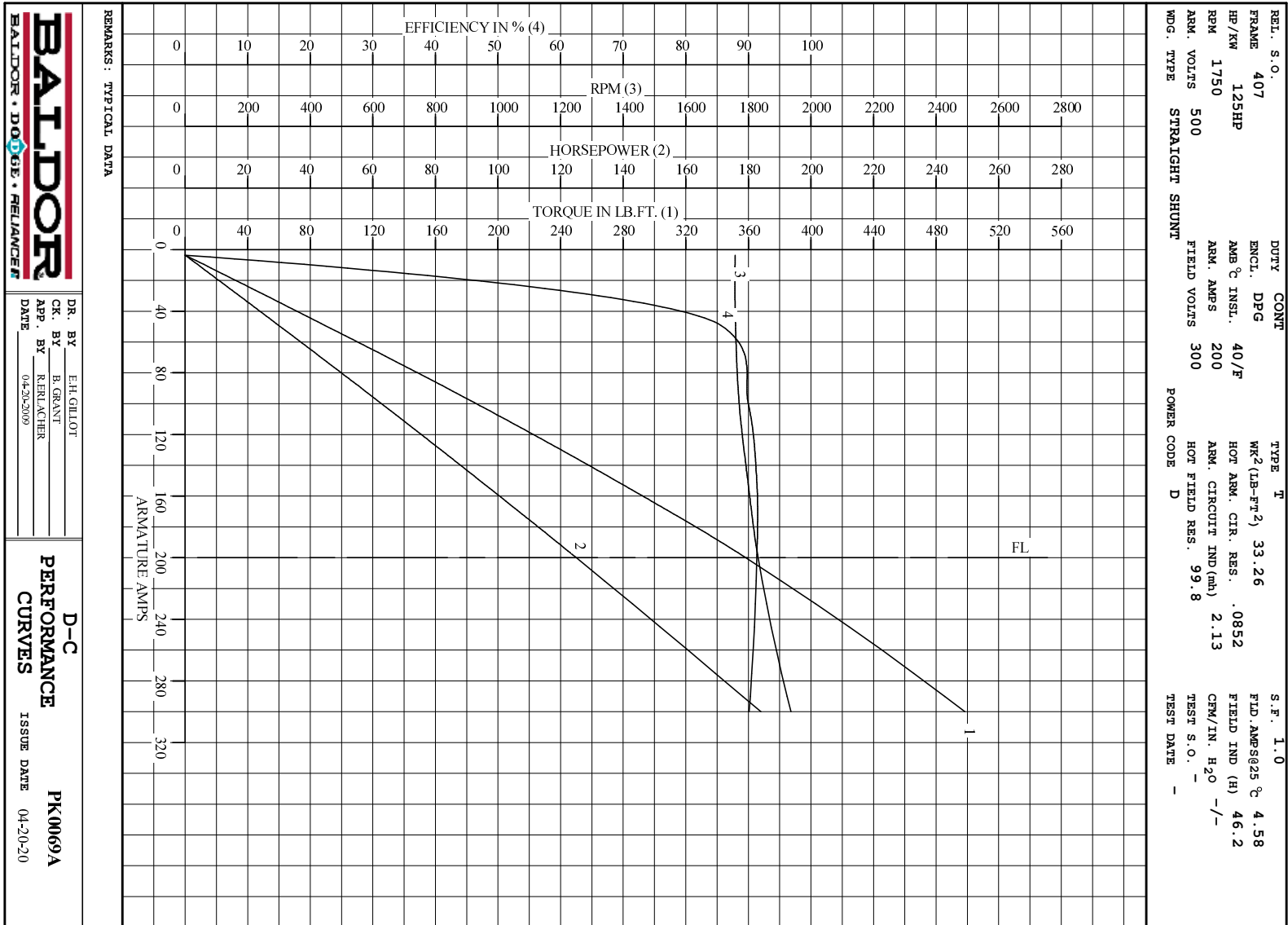


**BALDOR**  
BALDOR • DOUGLASS • RELIANCE

DR. BY E.H.GILLOT  
CK. BY B.GRANT  
APP. BY R.FRIEDRICH  
DATE 04-20-2009

**D-C APPLICATION DATA**

SK0069A  
ISSUE DATE 04-20-2009



**BALDOR**  
BALDOR • DOUG • RELIANCE

DR. BY E.H.GILLOT  
 CK. BY B.GRANT  
 APP. BY R.FERACHER  
 DATE 04-20-20

**D-C**  
**PERFORMANCE**  
**CURVES** ISSUE DATE 04-20-20  
**PK0069A**