

BALDOR® • ***RELIANCE***

Product Information Packet

D50150P

150HP, 1750/2000RPM, DC, 409AT, DPFG, F1, N

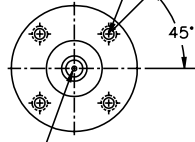
Copyright © All product information within this document is subject to Baldor Electric Company copyright © protection, unless otherwise noted.

Part Detail			
Type:	DC	Prod. Type:	T
Power Code:	D	Weight:	1785
Frame Group:	0409AT	Mounting Pos.:	F1
HP:	150	Enclosure:	DPFG
RPM:	1750/2000	Wound:	STR. SHUNT
Service Factor:	1.0	Arm V:	500
Arm A:	237.00	Field V:	300
Field A:	3.54	Field A Hot:	2.35-3.40/3.00-
Insulation Class:	F	Ambient:	40
Duty:	CONT	DE Bearing:	6214
ODE Bearing:	6213	Brushes:	40019-3
Brush Qty.:			

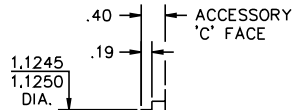
CUSTOMER NAME			MODEL NO.			MTG.		REMARKS:		
CUSTOMER P.O.			FRAME		R.P.M.	PHASE		INSUL		
CERTIFIED BY			H.P.		TYPE	VOLTS		AMB.		
DATE						ENCL		SHEET 2 OF 3		

UNITS: INCH	SCALE: NONE	PROPORTION: NONE	PART NUMBER 877	DWG. SIZE A
-------------	-------------	------------------	-----------------	-------------

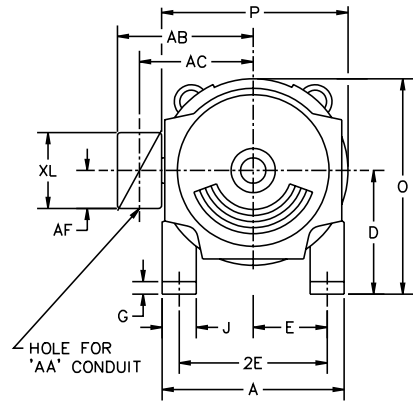
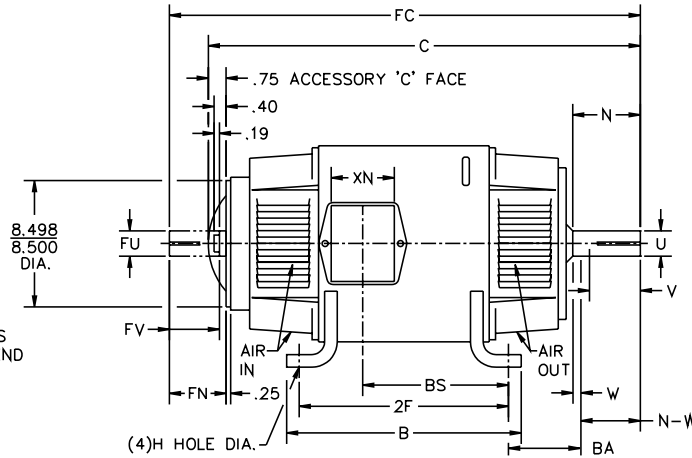
1/2-13UNC-2B THD X 1.00 DEEP
4-HOLES EQUALLY SPACED
ON A 7.250 DIA. B.C.



1/2-13 UNC-2B THD'S
1.00 DEEP IN SHAFT END



STANDARD COMM END
FOR SINGLE SHAFT EXTENSION



FRAME	FOOT MOUNTING						D.E. SHAFT EXTENSION					DRIVE KEY		ACC SHAFT EXTENSION			ACC KEY		FRAME						
	BA	E	2F	G	H	J	N	N-W	U	V	W	KEY-SQ.	KEY-LONG	FN	FU	FV	KEY-SQ.	KEY-LONG	A	B	C	FC	D	O	P
407AT	6.63	8.00	18.00	.81	.938	4.00	5.44	5.25	2.625	5.00 ³	.19	.625	4.00	4.95	2.375	4.70	.625	3.50	20.00	20.00	40.13	44.34	10.00 ²	20.19	20.38
L407AT	6.63	8.00	18.00	.81	.938	4.00	5.44	5.25	2.625	5.00 ³	.19	.625	4.00	4.95	2.375	4.70	.625	3.50	20.00	20.00	41.25	45.46	10.00 ²	20.19	20.38
409AT	6.63	8.00	22.00	.81	.938	4.00	5.44	5.25	2.625	5.00 ³	.19	.625	4.00	4.95	2.375	4.70	.625	3.50	20.00	24.00	44.63	48.84	10.00 ²	20.19	20.38
L409AT	6.63	8.00	22.00	.81	.938	4.00	5.44	5.25	2.625	5.00 ³	.19	.625	4.00	4.95	2.375	4.70	.625	3.50	20.00	24.00	45.75	49.96	10.00 ²	20.19	20.38
L4011AT	6.63	8.00	28.00	.81	.938	4.00	5.44	5.25	2.625	5.00 ³	.19	.625	4.00	4.95	2.375	4.70	.625	3.50	20.00	30.00	52.75	56.96	10.00 ²	20.19	20.38

FRAME	CONDUIT BOX							ARM APPROX. WK ² LBS.FT. ²	APPROXIMATE WEIGHT
	AA	AB	AC	AF	BS	XL	XN		
407AT	3	18.28	14.45	3.34	14.50	11.63	7.76	35.47	1317 ⁵
L407AT	3	18.28	14.45	3.34	15.62	11.63	7.76	35.47	1367 ⁵
409AT	3	18.28	14.45	3.34	19.00	11.63	7.76	43.81	1613 ⁵
L409AT	3	18.28	14.45	3.34	20.12	11.63	7.76	43.81	1663 ⁵
L4011AT	4	19.28	14.63	3.50	27.70	13.40	13.50	55.64	2260 ⁵

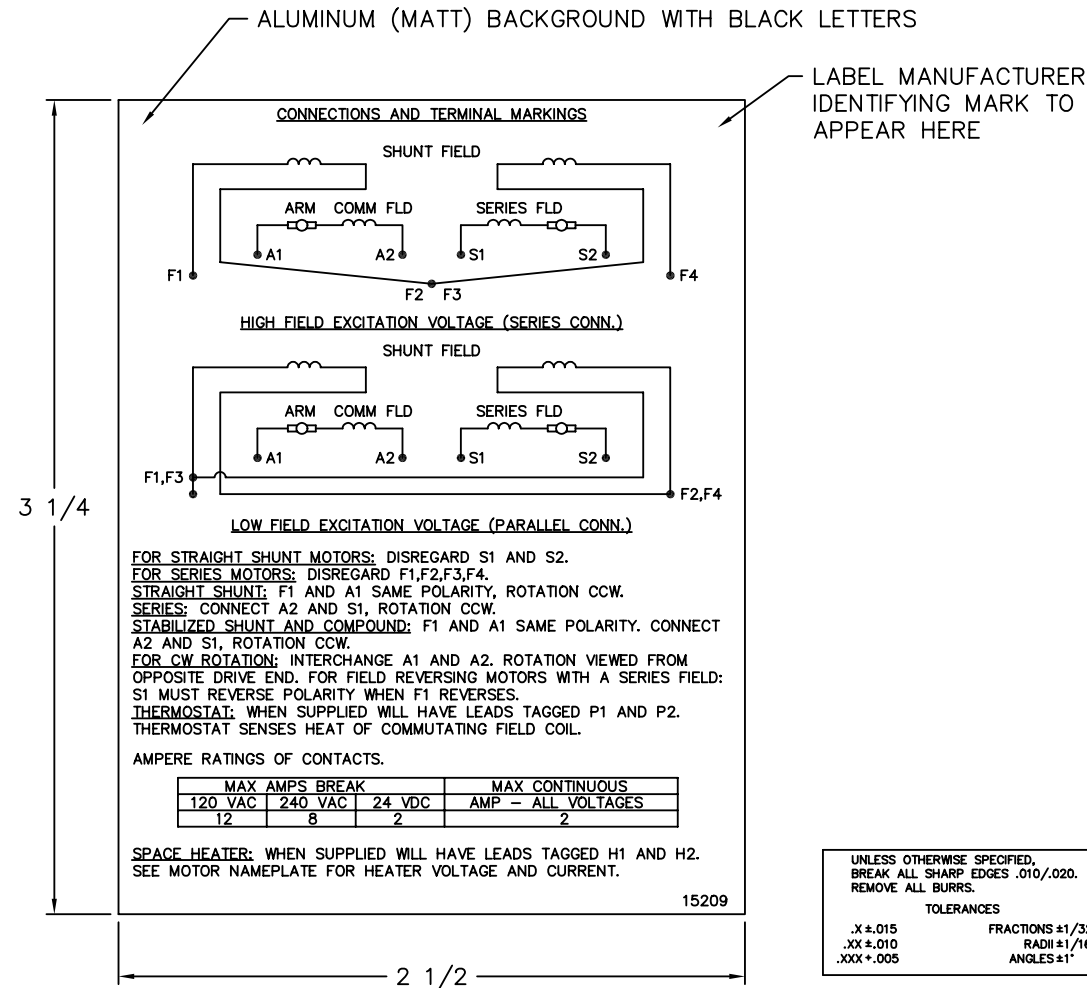
- 1) SHAFT DIAMETERS TO 1.500 TOLERANCE +.0000 - .0005
SHAFT DIAMETERS ABOVE 1.500 TOLERANCE +.0000 - .0010
SHAFT DIAMETERS TO 1.625 RUNOUT .002 T.I.R. MAX.
SHAFT DIAMETERS ABOVE 1.625 RUNOUT .003 T.I.R. MAX.
- 2) 'D' DIMENSION TOLERANCE +.000 - .060
- 3) 'Y' DIMENSION IS MAX. HUB LENGTH ON SHAFT
- 4) CONDUIT BOX CAN BE ROTATED IN 90° STEPS ON ITS OWN AXIS.
- 5) TOTAL WEIGHT OF MOTOR.
- 6) ALL DIMENSIONS NOT NOTED ARE NOMINAL DIMENSIONS CONSULT FACTORY FOR TOLERANCES.

FOR F1 OR F2 CONDUIT BOX
LOCATION SEE SALES ORDER

B	54100	ADD L4011AT FRAME	CSL	3-16-1994
REV.	ECO.	DESCRIPTION	BY	DATE

DESIGNER CSL 7-19-91	BALDOR
ENGINEER RFL 7-19-91	
ENGINEER DAG 7-19-91	
MANUF. RWL 7-19-91	
TITLE: DIMENSION SHEET DPFG, STD AT SHEET 2 OF 3	
PART NUMBER 877	DWG. SIZE A
REV. B	

15209



NOTE:
 MATERIAL .005 MINIMUM FULL HARD ALUMINUM DULL FINISH.
 TEMP. RANGE -20°C TO +125°C MAXIMUM.
 FOR INDOOR AND OUTDOOR MOUNTING BACK.
 METAL, PRESSURE SENSITIVE BACK. MUST MEET CSA STANDARD.
 THE CSA IDENTIFYING MARK OF THE LABEL MANUFACTURER MUST APPEAR IN THE UPPER RIGHT HAND CORNER AS INDICATED.

MATL: NOTED			
REV:	G	CHANGE ALL "NAMEPLATE" TEXT TO "LABEL"	
60291	SCALE: -	BY: BKW	REVISED: 02/19/97
	FILE: CHB00002485	TDR: 0115147	

BALDOR ELECTRIC Co.

LABEL, CONNECTIONS AND TERMINAL MARKINGS DC

15209


REL. S. O.	FRAME	RATING	RPM	ARM. VOLTS	ARM. AMPS
	409	150HP	1750	500	237
WINDING TYPE		S. F.	ENCL.	AMB °C/INSUL	DUTY
STRAIGHT SHUNT		1.0	DRG	40/F	CONT
					300
POWER CODE	TYPE	WK 2 (LB-FT ²)	HOT ARM. CIR. RES.	FLD. AMPS@25 °C	HOT FIELD RES
D	T	42.33	.0627	3.54	127

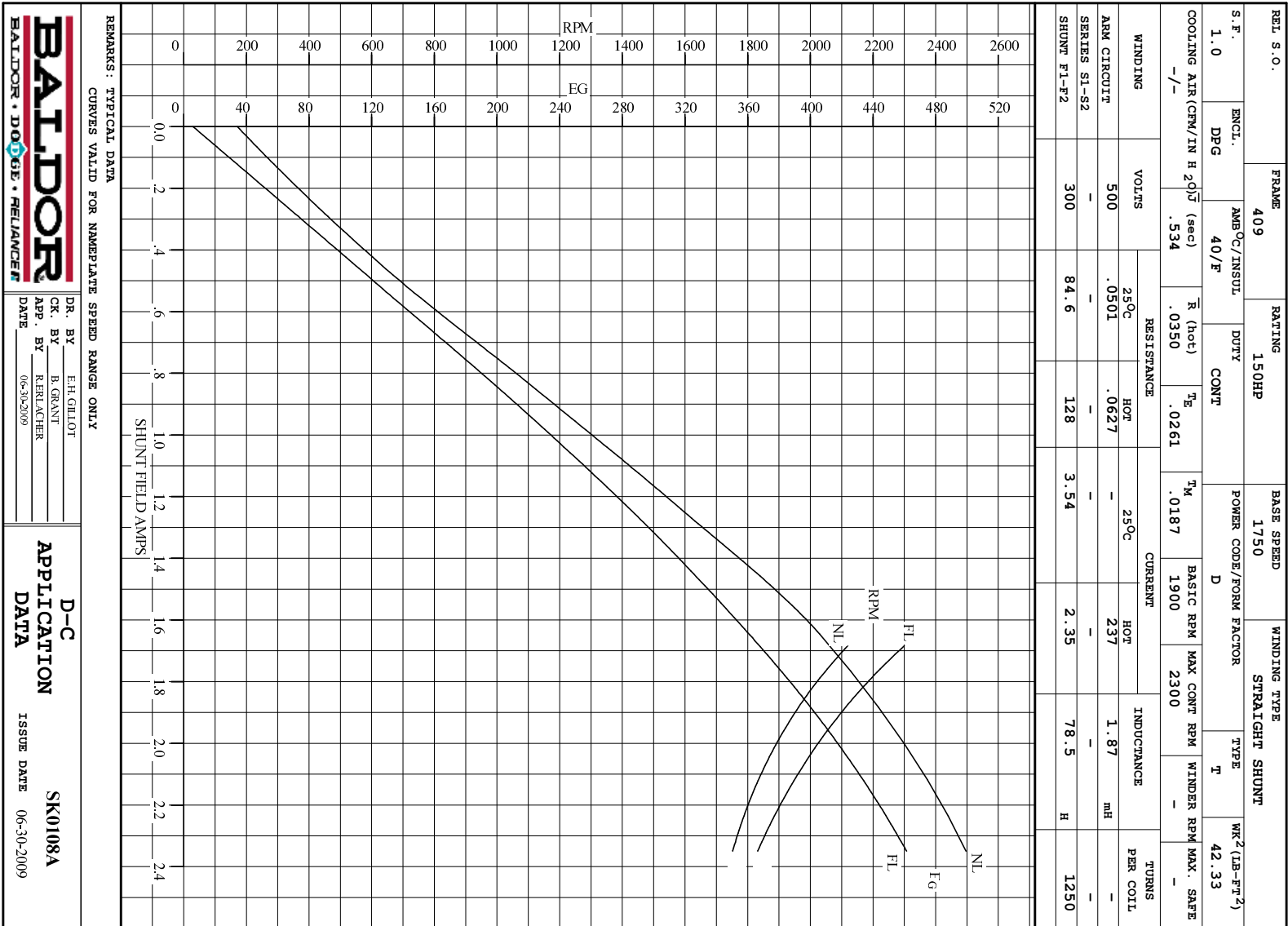
ARM. CIR. IND. (mh)	FIELD IND. (H)	COOLING AIR (CFM/IN H 20)	TURNS PER COIL SHUNT/SERIES	TEST DATE
1.86	78.5	-/-	1250/.00000	-

LOAD PERFORMANCE					
LOAD	AMPERES	TORQUE IN LB.-FT.	OUTPUT IN HP	RPM	% EFFICIENCY
NO LOAD	2.5	0	0	1748	0
1/4	59	112	37.2	1747	89.6
2/4	119	225	75.6	1764	92.0
3/4	178	331	113	1795	92.9
4/4	237	429	150	1835	92.7
O.L.	356	592	220	1954	91.4

RPM VS. FIELD AMPS		Eg VS. FIELD AMPS		
FIELD AMPS	RPM N. L.	RPM F. L.	Eg N. L. @ BASE SPEED	Eg F. L. @ BASE SPEED
2.34	1747	1834	499	461
2.18	1807	1912	486	441
2.01	1883	2013	467	419
1.85	1984	2139	442	395
1.68	2119	2300	413	367

REMARKS: TYPICAL DATA

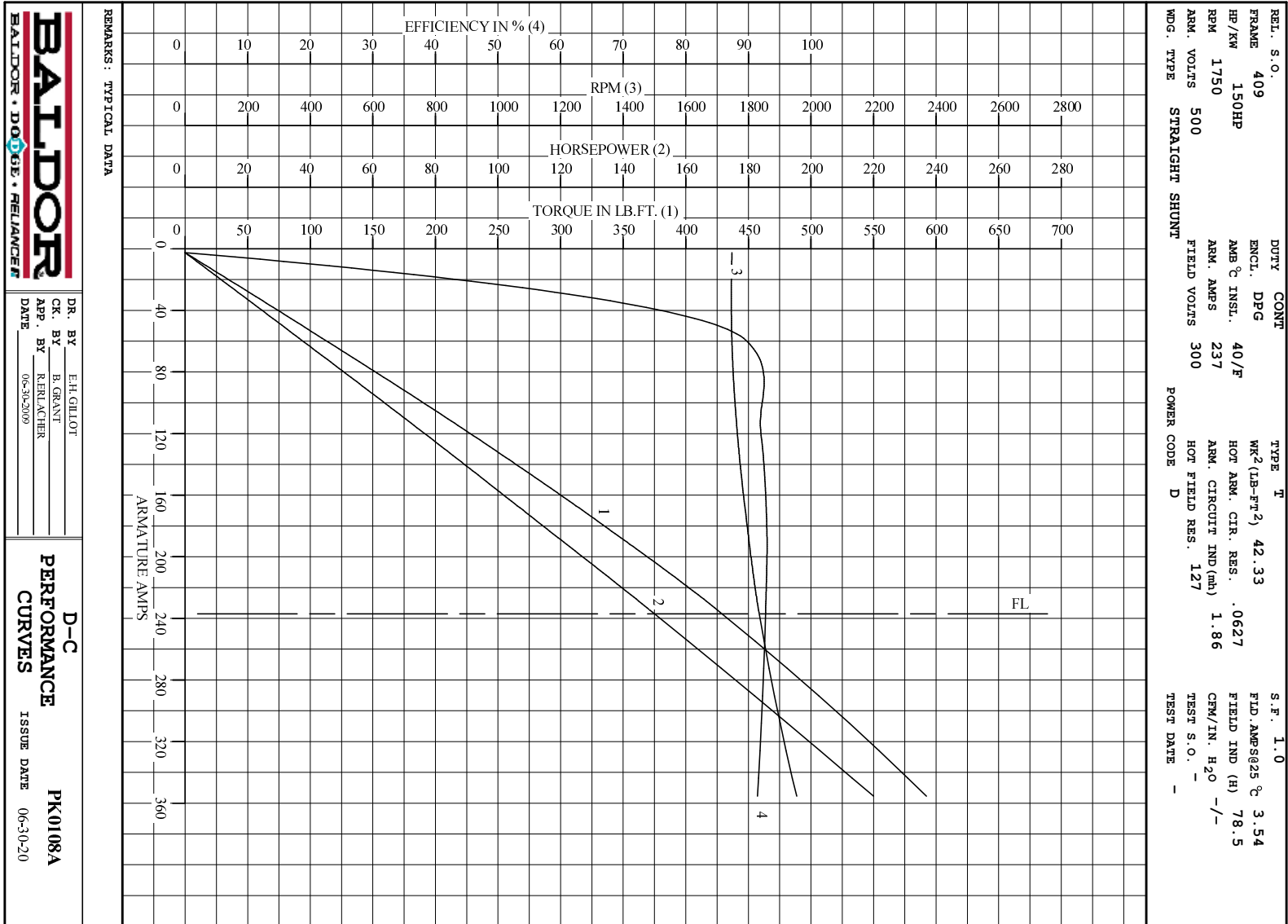
	DR. BY E. H. GILLOT	D-C MOTOR PERFORMANCE DATA DK0108A ISSUE DATE 06-30-2009
	CK. BY B. GRANT APP. BY R. BRANCHER DATE 06-30-2009	



DR. BY E.H.GILLOT
 CK. BY B.GRANT
 APP. BY R.RAUCHER
 DATE 06-30-2009

D-C APPLICATION DATA

SK0108A
 ISSUE DATE 06-30-2009



DR. BY E.H.GILLOT
 CK. BY B.GRANT
 APP. BY R.BERLACHER
 DATE 06-30-2009

D-C
PERFORMANCE
CURVES ISSUE DATE 06-30-20
PK0108A