

BALDOR® • *RELIANCE*

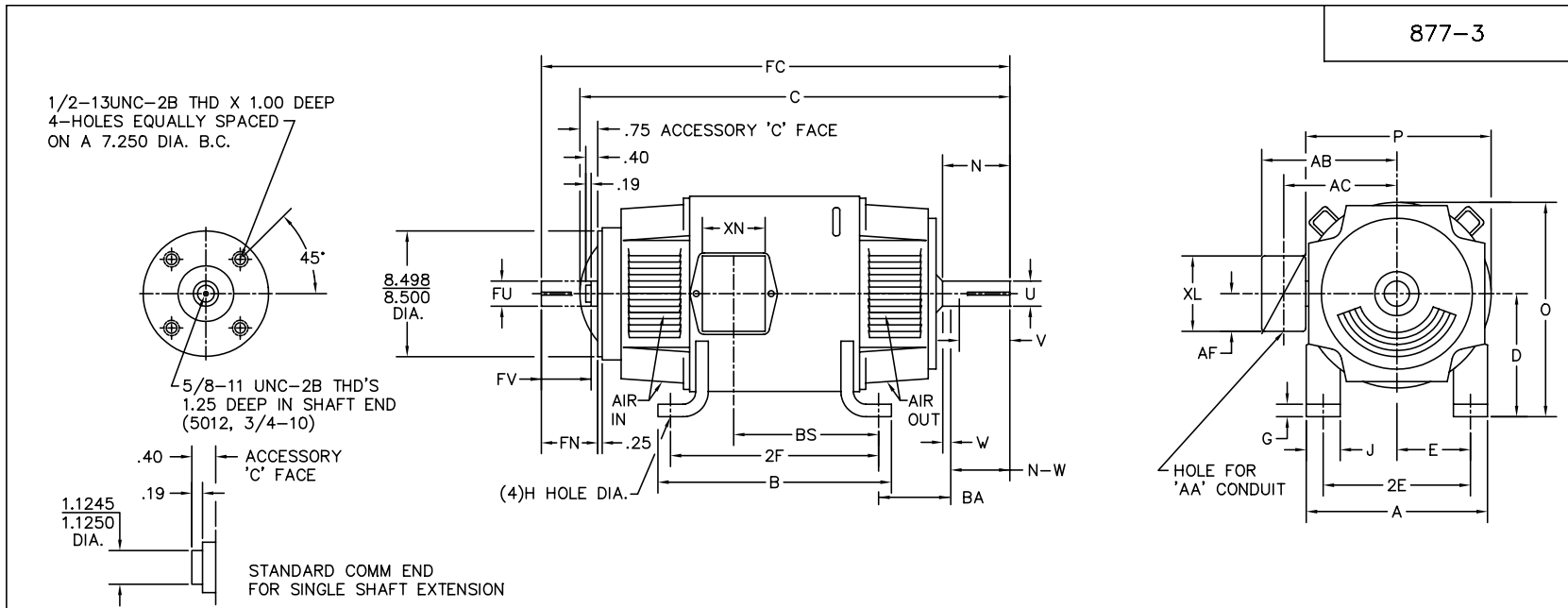
Product Information Packet

D50200P

200HP, 1750/1900RPM, DC, 504AT, DPFG, F1, N

Copyright © All product information within this document is subject to Baldor Electric Company copyright © protection, unless otherwise noted.

Part Detail			
Type:	DC	Prod. Type:	T
Power Code:	D	Weight:	2095
Frame Group:	0504AT	Mounting Pos.:	F1
HP:	200	Enclosure:	DPFG
RPM:	1750/1900	Wound:	STR. SHUNT
Service Factor:	1.0	Arm V:	500
Arm A:	320.00	Field V:	150/ 300
Field A:	11.90/5.95	Field A Hot:	7.80-7.00/3.90-
Insulation Class:	F	Ambient:	40
Duty:	CONT	DE Bearing:	6218
ODE Bearing:	6216	Brushes:	50034-2
Brush Qty.:			



FRAME	FOOT MOUNTING						D.E. SHAFT EXTENSION						DRIVE KEY		ACC SHAFT EXTENSION			ACC KEY		FRAME					
	BA	E	2F	G	H	J	N	N-W	U	V	W	KEY-SQ.	KEY-LONG	FN	FU	FV	KEY-SQ.	KEY-LONG	A	B	C	FC	D	O	P
504AT	8.50	10.00	16.00	1.18	1.188	4.50	6.76	6.57	3.250	6.32 ³	.19	.750	5.25	5.95	2.875	5.70	.750	5.00	24.88	18.88	45.75	51.00	12.50 ²	24.91	24.81
506AT	8.50	10.00	20.00	1.18	1.188	4.50	6.76	6.57	3.250	6.32 ³	.19	.750	5.25	5.95	2.875	5.70	.750	5.00	24.88	22.88	49.75	55.00	12.50 ²	24.91	24.81
508AT	8.50	10.00	25.00	1.18	1.188	4.50	6.76	6.57	3.250	6.32 ³	.19	.750	5.25	5.95	2.875	5.70	.750	5.00	24.88	27.88	54.75	60.00	12.50 ²	24.91	24.81
5010AT	8.50	10.00	32.00	1.18	1.188	4.50	6.76	6.57	3.250	6.32 ³	.19	.750	5.25	5.95	2.875	5.70	.750	5.00	24.88	34.88	61.75	67.00	12.50 ²	24.91	24.81
5011AT	8.50	10.00	36.00	1.18	1.188	4.50	6.76	6.57	3.250	6.32 ³	.19	.750	5.25	5.95	2.875	5.70	.750	5.00	24.88	38.88	65.75	71.00	12.50 ²	24.91	24.81
5012AT	8.50	10.00	43.00	1.18	1.188	4.50	7.06	6.87	4.250	6.62 ³	.19	1.000	5.25	5.95	2.875	5.70	1.000	5.00	24.88	45.88	73.75	79.75	12.50 ²	24.91	24.91

FRAME	CONDUIT BOX							ARM APPROX. WK ² LBS.FT. ²	APPROXIMATE WEIGHT
	AA	AB	AC	AF	BS	XL	XN		
504AT	3	20.65	16.81	2.62	13.25	11.63	7.76	79.10	1910 ⁵
506AT	3	20.65	16.81	2.62	17.25	11.63	7.76	98.76	2290 ⁵
508AT	3	20.65	16.81	2.62	22.25	11.63	7.76	121.87	2820 ⁵
5010AT	4 ⁴	21.20	16.81	2.84	30.12	13.40	13.50	156	3450 ⁵
5011AT	4 ⁴	21.20	16.81	2.84	34.12	13.40	13.50	161	3810 ⁵
5012AT	4 ⁴	21.20	17.19	2.84	41.12	13.40	13.50	170	4887 ⁵

- 1) SHAFT DIAMETERS TO 1.500 TOLERANCE +.0000 - .0005
SHAFT DIAMETERS ABOVE 1.500 TOLERANCE +.0000 - .0010
SHAFT DIAMETERS TO 1.625 RUNOUT .002 T.I.R. MAX.
SHAFT DIAMETERS ABOVE 1.625 RUNOUT .003 T.I.R. MAX.
- 2) 'D' DIMENSION TOLERANCE +.000 - .060.
- 3) 'V' DIMENSION IS MAX. HUB LENGTH ON SHAFT
- 4) THERE ARE TWO HOLES FOR 4" CONDUIT, SECOND HOLE IS 6" TOWARD DRIVE END.
- 5) TOTAL WEIGHT OF MOTOR.
- 6) ALL DIMENSIONS NOT NOTED ARE NOMINAL DIMENSIONS CONSULT FACTORY FOR TOLERANCES.

FOR F1 OR F2 CONDUIT BOX LOCATION SEE SALES ORDER

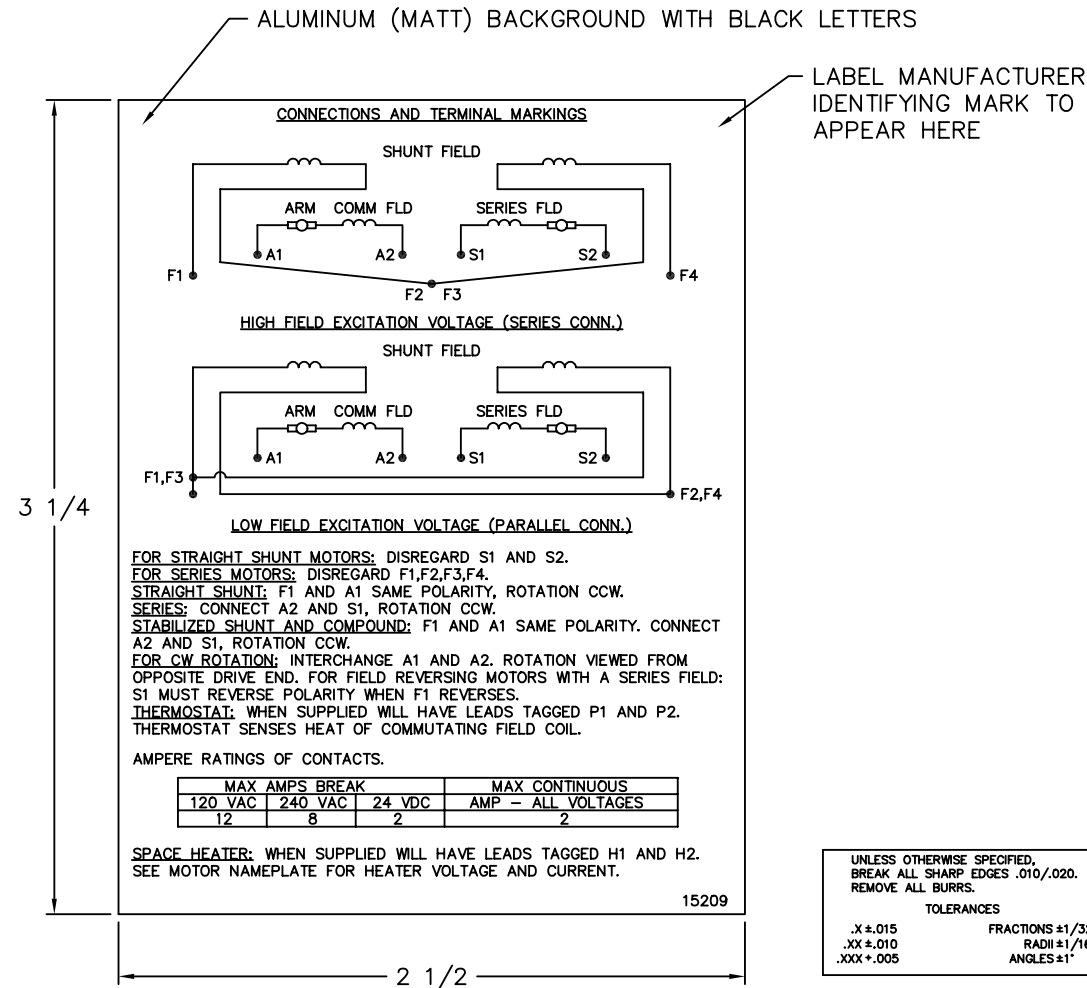
MATL:	-		
REV:	C	CORRECT ERROR 5012AT E FROM 20 TO 10	
Σ 778	SCALE:	-	BY: BKW
	FILE:	CHB00001040	TDR: 0096765
	REVISED:	05/13/96	

BALDOR ELECTRIC Co.

DIM SHEET

877-3

15209



NOTE:
 MATERIAL .005 MINIMUM FULL HARD ALUMINUM DULL FINISH.
 TEMP. RANGE -20°C TO +125°C MAXIMUM.
 FOR INDOOR AND OUTDOOR MOUNTING BACK.
 METAL, PRESSURE SENSITIVE BACK. MUST MEET CSA STANDARD.
 THE CSA IDENTIFYING MARK OF THE LABEL MANUFACTURER MUST APPEAR IN THE UPPER RIGHT HAND CORNER AS INDICATED.

MATL: NOTED			
REV:	G	CHANGE ALL "NAMEPLATE" TEXT TO "LABEL"	
60291	SCALE: -	BY: BKW	REVISED: 02/19/97
	FILE: CHB00002485	TDR: 0115147	

BALDOR ELECTRIC Co.

LABEL, CONNECTIONS AND TERMINAL MARKINGS DC

15209

REL S.O.	FRAME	RATING	RPM	ARM. VOLTS	ARM. AMPS
	504	200HP	1750	500	320
WINDING TYPE		S.F.	ENCL.	AMB °C/INSUL	DUTY
STRAIGHT SHUNT		1.0	DRG	40/F	CONT
					300
POWER CODE		TYPE	WK 2 (LB-FT ²)	HOT ARM. CIR. RES.	FLD. AMPS@25 °C
D		T	74.37	.0559	5.94
					HOT FIELD RES
					76.9

ARM. CIR. IND. (mh)	FIELD IND. (H)	COOLING AIR (CFM/IN H 20)	TURNS PER COIL SHUNT/SERIES	TEST DATE
1.59	44.7	-/-	1250/.00000	-

LOAD PERFORMANCE


LOAD	AMPERES	TORQUE IN LB.-FT.	OUTPUT IN HP	RPM	% EFFICIENCY
NO LOAD	5.4	0	0	1715	0
1/4	80	151	49.1	1707	86.7
2/4	160	311	101	1704	90.2
3/4	240	465	151	1707	91.6
4/4	320	610	200	1724	91.5
O.L.	480	866	294	1783	90.2

RPM VS. FIELD AMPS

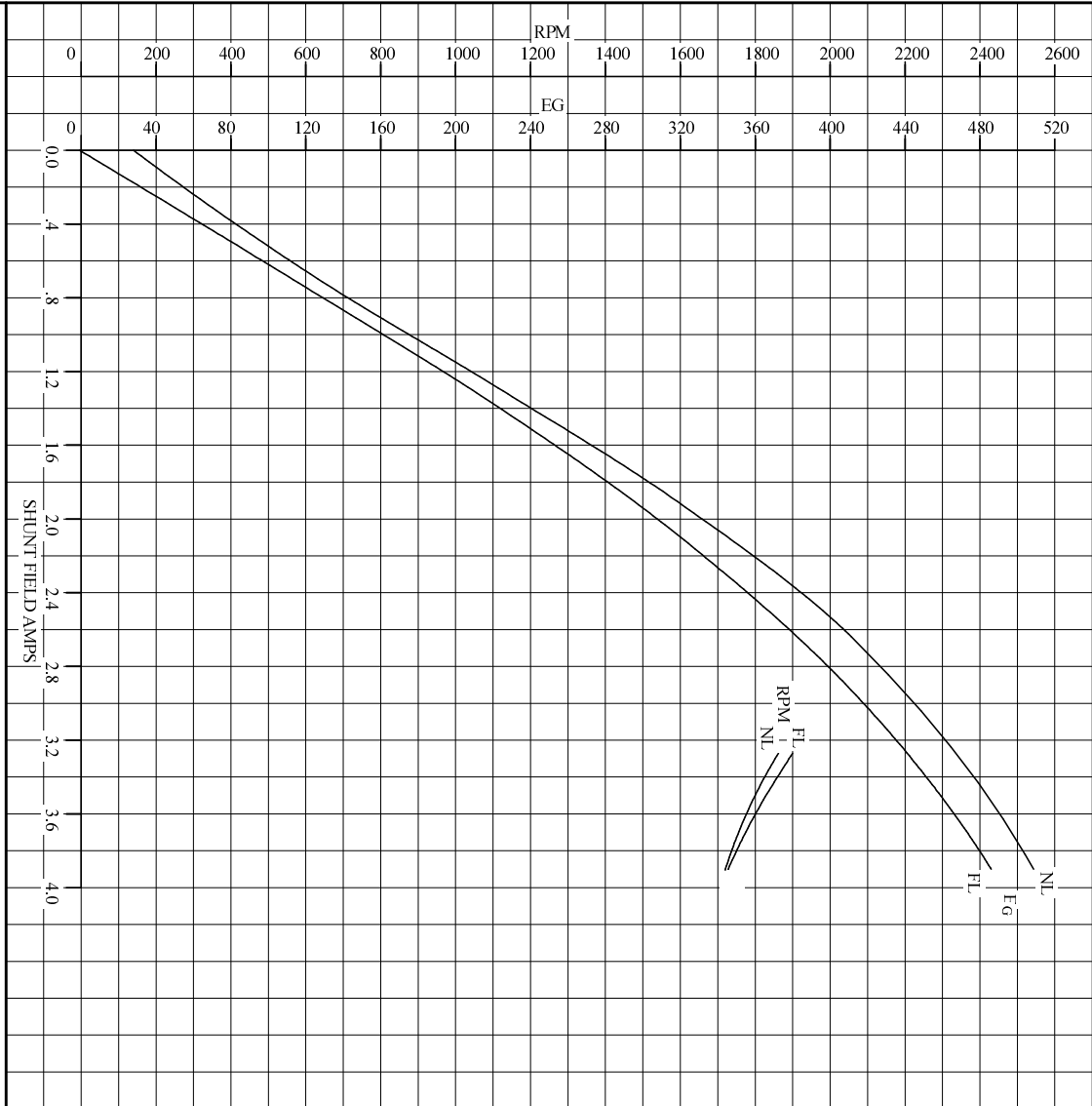
Eg VS. FIELD AMPS

FIELD AMPS	RPM N.L.	RPM F.L.	Eg N.L. @ BASE SPEED	Eg F.L. @ BASE SPEED
3.90	1715	1724	508	486
3.74	1747	1763	500	476
3.58	1779	1804	491	465
3.42	1817	1850	480	453
3.27	1862	1900	469	441

REMARKS: TYPICAL DATA

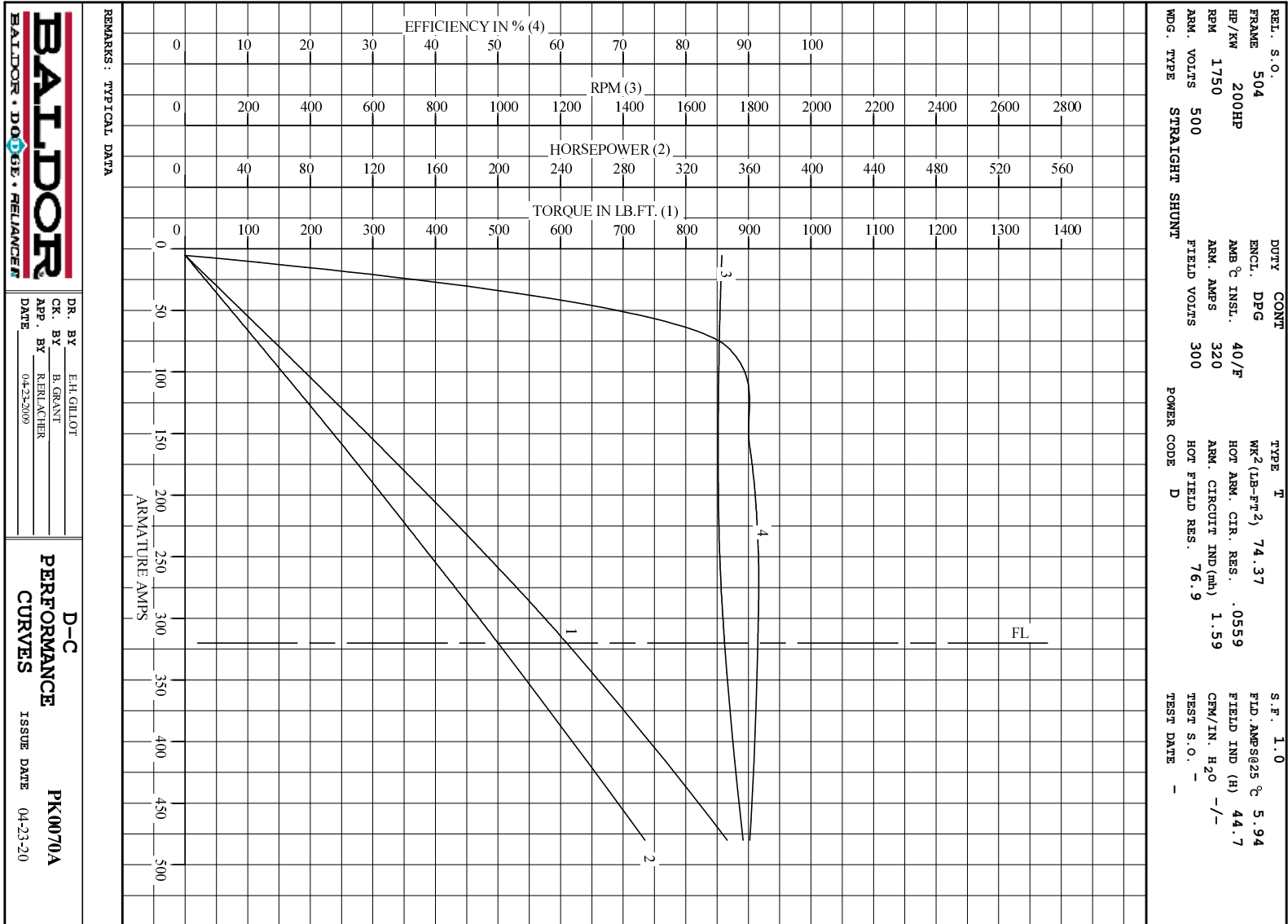
	DR. BY E. H. GILLOT	D-C MOTOR PERFORMANCE DATA DK0070A ISSUE DATE 04-23-2009
	CK. BY B. GRANT APP. BY R. BRANCHER DATE 04-23-2009	

REL. S.O.	FRAME 504	RATING 200HP	BASE SPEED 1750	WINDING TYPE STRAIGHT SHUNT
S.F. 1.0	ENCL. DPG	AMB°C/INSUL 40/F	DUTY CONT	POWER CODE/FORM FACTOR D
COOLING AIR (CFM/IN H ² O) -/-	\bar{R} (sec) .704	\bar{R} (hot) .0419	\bar{T}_M .0295	BASIC RPM 1800
				MAX CONT RPM 1900
WINDING	VOLTS	RESISTANCE		CURRENT
		25°C	HOT	INDUCTANCE
ARM CIRCUIT	500	.0373	.0560	PER COIL
SERIES S1-S2	-	-	-	
SHUNT F1-F2	300	50.5	76.9	44.7
			5.95	3.90
				H
				1250



REMARKS: TYPICAL DATA
CURVES VALID FOR NAMEPLATE SPEED RANGE ONLY

BALDOR BALDOR • DOUG • RELIANCE	DR. BY E.H. GILLOT	D-C APPLICATION DATA	SK0070A
	CK. BY B. GRANT		
	APP. BY R. RABACHER	ISSUE DATE	04-23-2009
	DATE 04-23-2009		



DR. BY E.H.GILLOT
 CK. BY B.GRANT
 APP. BY R.RRACHER
 DATE 04-23-20

D-C
PERFORMANCE
CURVES ISSUE DATE 04-23-20
PK0070A