

BALDOR® • RELIANCE

Product Information Packet

D5020P

20HP, 1750/2300RPM, DC, 259AT, DPFG, F1

Copyright © All product information within this document is subject to Baldor Electric Company copyright © protection, unless otherwise noted.

Part Detail			
Type:	DC	Prod. Type:	T
Power Code:	D	Weight:	250
Frame Group:	259AT	Mounting Pos.:	F1
HP:	20	Enclosure:	DPFG
RPM:	1750/2300	Wound:	STR. SHUNT
Service Factor:	1.0	Arm V:	500
Arm A:	35.10	Field V:	150/ 300
Field A:	3.58/1.79	Field A Hot:	2.48-1.50/1.24-
Insulation Class:	F	Ambient:	40
Duty:	CONT	DE Bearing:	6209
ODE Bearing:	6207	Brushes:	150986-25-1
Brush Qty.:			

876-1

1/2-13UNC-2B THD X 1.00 DEEP
4-HOLES EQUALLY SPACED
ON A 7.250 DIA. B.C.

3/8-16 UNC-2B THD'S
.88 DEEP IN SHAFT END

8.498
8.500 DIA.

.40
.19

1.1245
1.1250 DIA.

ACCESSORY 'C' FACE

STANDARD COMM END
FOR SINGLE SHAFT EXTENSION

FC
C
.75 ACCESSORY 'C' FACE
.40
.19
N
FN
FU
FV
BS
2F
B
BA
N-W
AIR IN
AIR OUT
XL
AF
J
E
2E
A
D
O
P
AB
AC
P
AB
AC
XL
AF
J
E
2E
A

1-918

FRAME	FOOT MOUNTING					D.E. SHAFT EXTENSION					DRIVE KEY			ACC SHAFT			ACC KEY		FRAME						
	BA	E	2F	G	H	N	N-W	U	V	W	KEY-SQ.	KEY-LONG	FN	FU	FV	KEY-SQ.	KEY-LONG	A	B	C	FC	D	O	P	
218AT	3.50	4.25	10.00	.50	.406	2.00	3.00	2.75	1.375	2.50 ³	.25	.312	1.75	2.44	1.125	2.19	.250	2.25	10.38	11.00	24.25	25.93	5.25 ²	10.47	10.44
219AT	3.50	4.25	11.00	.50	.406	2.00	3.00	2.75	1.375	2.50 ³	.25	.312	1.75	2.44	1.125	2.19	.250	2.25	10.38	12.00	25.25	26.93	5.25 ²	10.47	10.44
2110AT	3.50	4.25	12.50	.50	.406	2.00	3.00	2.75	1.375	2.50 ³	.25	.312	1.75	2.44	1.125	2.19	.250	2.25	10.38	13.50	26.75	28.43	5.25 ²	10.47	10.44
258AT	4.25	5.00	12.50	.69	.531	2.25	3.44	3.25	1.625	3.00 ³	.19	.375	2.31	3.33	1.375	3.08	.312	3.00	12.38	14.00	27.25	29.84	6.25 ²	12.47	12.44
259AT	4.25	5.00	14.00	.69	.531	2.25	3.44	3.25	1.625	3.00 ³	.19	.375	2.31	3.33	1.375	3.08	.312	3.00	12.38	15.50	28.75	31.34	6.25 ²	12.47	12.44
2510AT	4.25	5.00	16.00	.69	.531	2.25	3.44	3.25	1.625	3.00 ³	.19	.375	2.31	3.33	1.375	3.08	.312	3.00	12.38	17.56	30.75	33.34	6.25 ²	12.47	12.44
2513AT	4.25	5.00	22.00	.69	.531	2.25	3.44	3.25	1.625	3.00 ³	.19	.375	2.31	3.33	1.375	3.08	.312	3.00	12.38	23.50	36.75	39.34	6.25 ²	12.47	12.44

FRAME	CONDUIT BOX							ARM APPROX. WK ² LBS.FT. ²	APPROXIMATE WEIGHT
	AA	AB	AC	AF	BS	XL	XN		
218AT	3/4-1	7.91	6.44	2.44	8.38	3.81	3.12	1.35	242 ⁵
219AT	3/4-1	7.91	6.44	2.44	9.38	3.81	3.12	1.49	260 ⁵
2110AT	3/4-1	7.91	6.44	2.44	10.88	3.81	3.12	1.71	286 ⁵
258AT	1 1/4	9.35	7.72	2.94	9.75	4.94	4.00	2.91	366 ⁵
259AT	1 1/4	9.35	7.72	2.94	11.25	4.94	4.00	3.31	411 ⁵
2510AT	1 1/4	9.35	7.72	2.94	13.25	4.94	4.00	3.80	471 ⁵
2513AT	1 1/4	9.35	7.72	2.94	19.25	4.94	4.00	5.27	532 ⁵

1) SHAFT DIAMETERS TO 1.500 TOLERANCE +.0000 - .0005
SHAFT DIAMETERS ABOVE 1.500 TOLERANCE +.0000 - .0010
SHAFT DIAMETERS TO 1.625 RUNOUT .002 T.I.R. MAX.
SHAFT DIAMETERS ABOVE 1.625 RUNOUT .003 T.I.R. MAX.

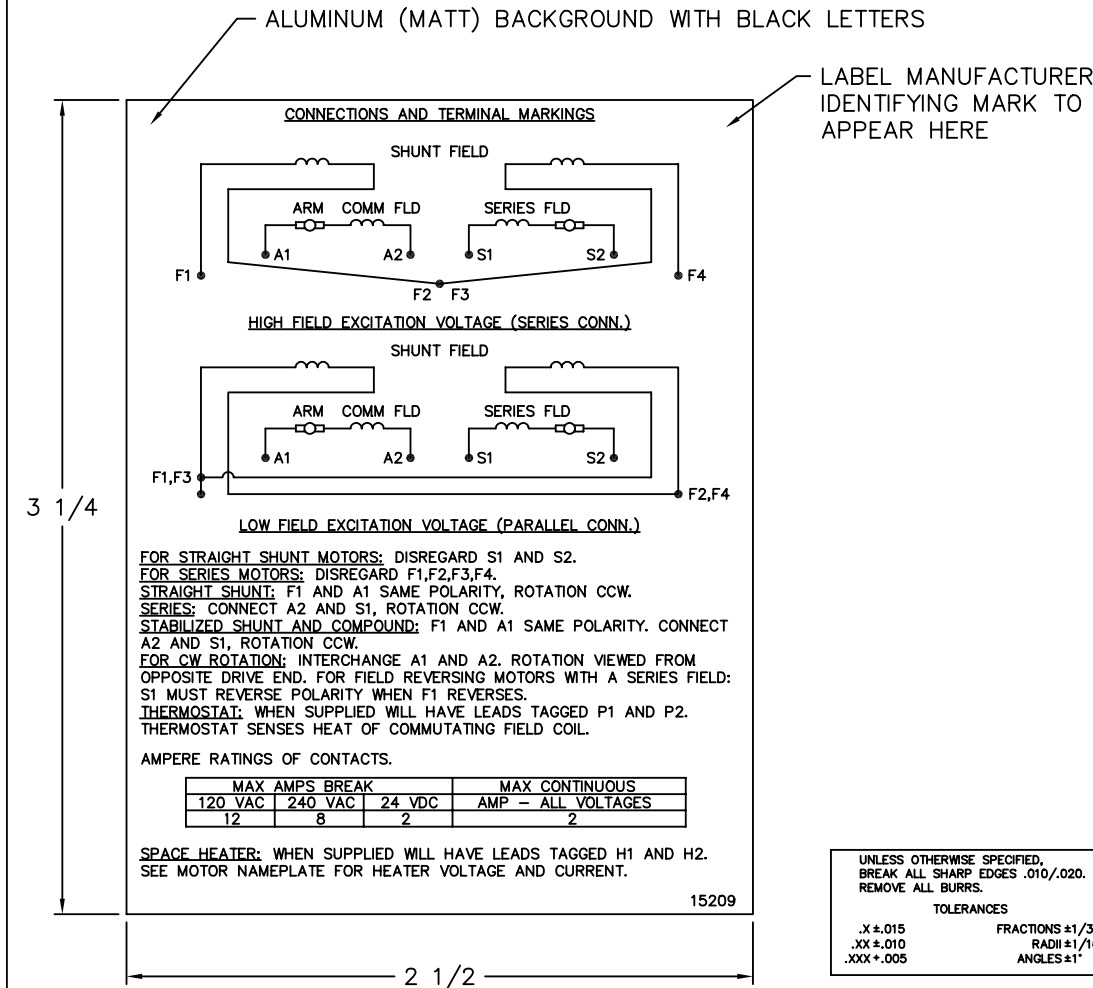
2) 'D' DIMENSION TOLERANCE +.000 - .060
3) 'V' DIMENSION IS MAX. HUB LENGTH ON SHAFT
4) CONDUIT BOX CAN BE ROTATED IN 90° STEPS ON ITS OWN AXIS.
5) TOTAL WEIGHT OF MOTOR.
6) ALL DIMENSIONS NOT NOTED ARE NOMINAL DIMENSIONS CONSULT FACTORY FOR TOLERANCES.

FOR F1 OR F2 CONDUIT BOX LOCATION SEE SALES ORDER

CUSTOMER IS RESPONSIBLE FOR DETERMINING THAT BALDOR'S PRODUCT WILL PERFORM SUITABLY IN THE INTENDED APPLICATION.

REV. DESC: REV. "D" DIM TO +.000 - .060 ONLY	BALDOR	
REV. LTR: B	VERSION: 01	TDR: 000000752566
FILE: \RGG\00019\505	REVISED: 09:35:03 06/20/2012	BY: RGNAS
MTL: -	DIM SHEET, 218AT-2513AT, DPFG, STD	
	SH 1 of 1	

15209



NOTE:
 MATERIAL .005 MINIMUM FULL HARD ALUMINUM DULL FINISH.
 TEMP. RANGE -20°C TO +125°C MAXIMUM.
 FOR INDOOR AND OUTDOOR MOUNTING BACK.
 METAL, PRESSURE SENSITIVE BACK. MUST MEET CSA STANDARD.
 THE CSA IDENTIFYING MARK OF THE LABEL MANUFACTURER MUST APPEAR IN THE UPPER RIGHT HAND CORNER AS INDICATED.

MATL: NOTED			
REV:	G	CHANGE ALL "NAMEPLATE" TEXT TO "LABEL"	
60291	SCALE: -	BY: BKW	REVISED: 02/19/97
	FILE: CHB00002485	TDR: 0115147	

BALDOR ELECTRIC Co.

LABEL, CONNECTIONS AND TERMINAL MARKINGS DC

15209

REL. S. O.	FRAME	RATING	RPM	ARM. VOLTS	ARM. AMPS
	259	20.0HP	1750	500	35.1
WINDING TYPE		S.F.	ENCL.	AMB °C/INSUL	DUTY
STRAIGHT SHUNT		1.0	DRG	40/F	CONT
					300
POWER CODE	TYPE	WK 2 (LB-FT ²)	HOT ARM. CIR. RES.	FLD. AMPS@25 °C	HOT FIELD RES
D	T	2.686	1.25	1.79	241

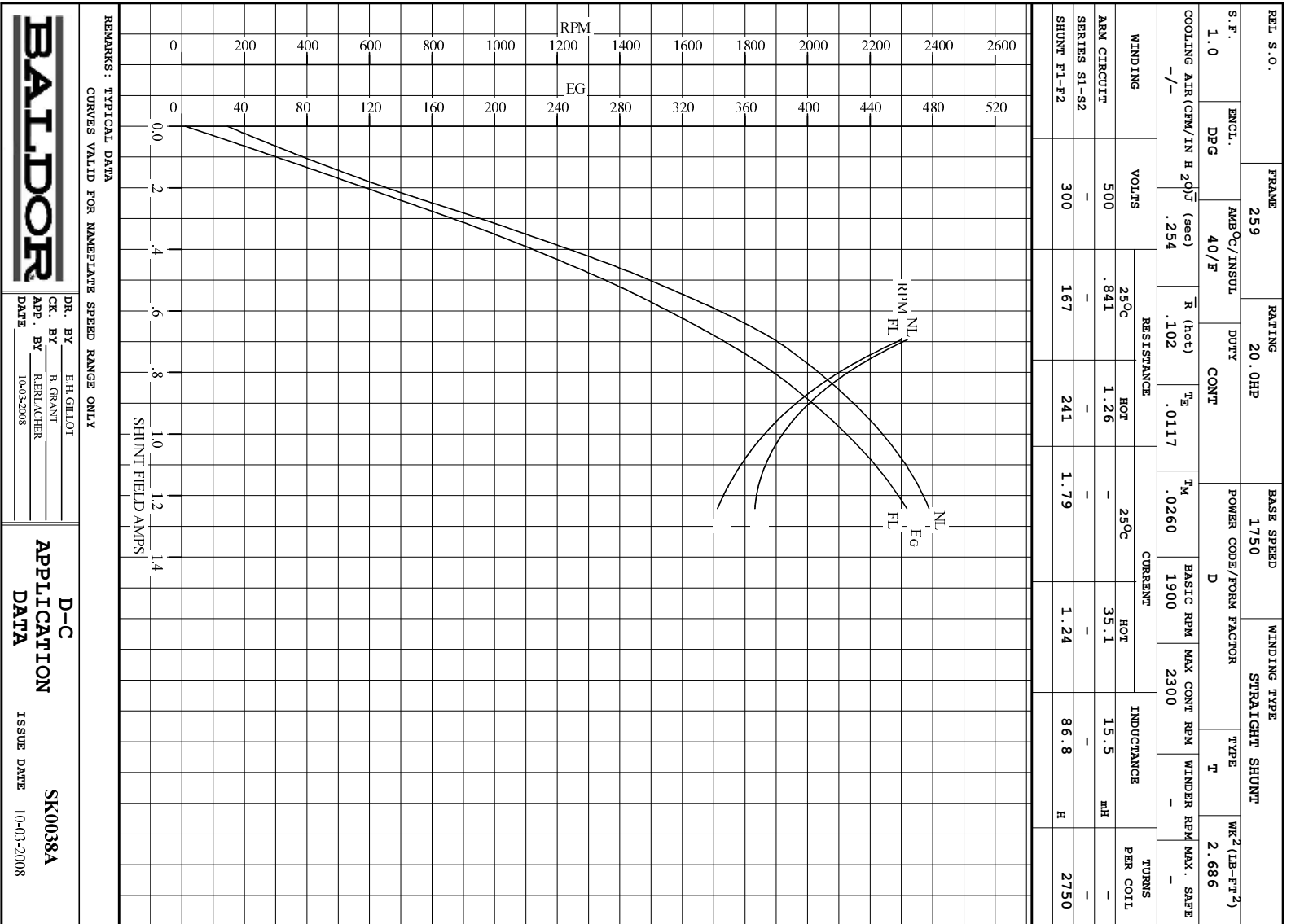
ARM. CIR. IND. (mh)	FIELD IND. (H)	COOLING AIR (CFM/IN H 20)	TURNS PER COIL SHUNT/SERIES	TEST DATE
15.4	86.7	-/-	2750/.00000	-

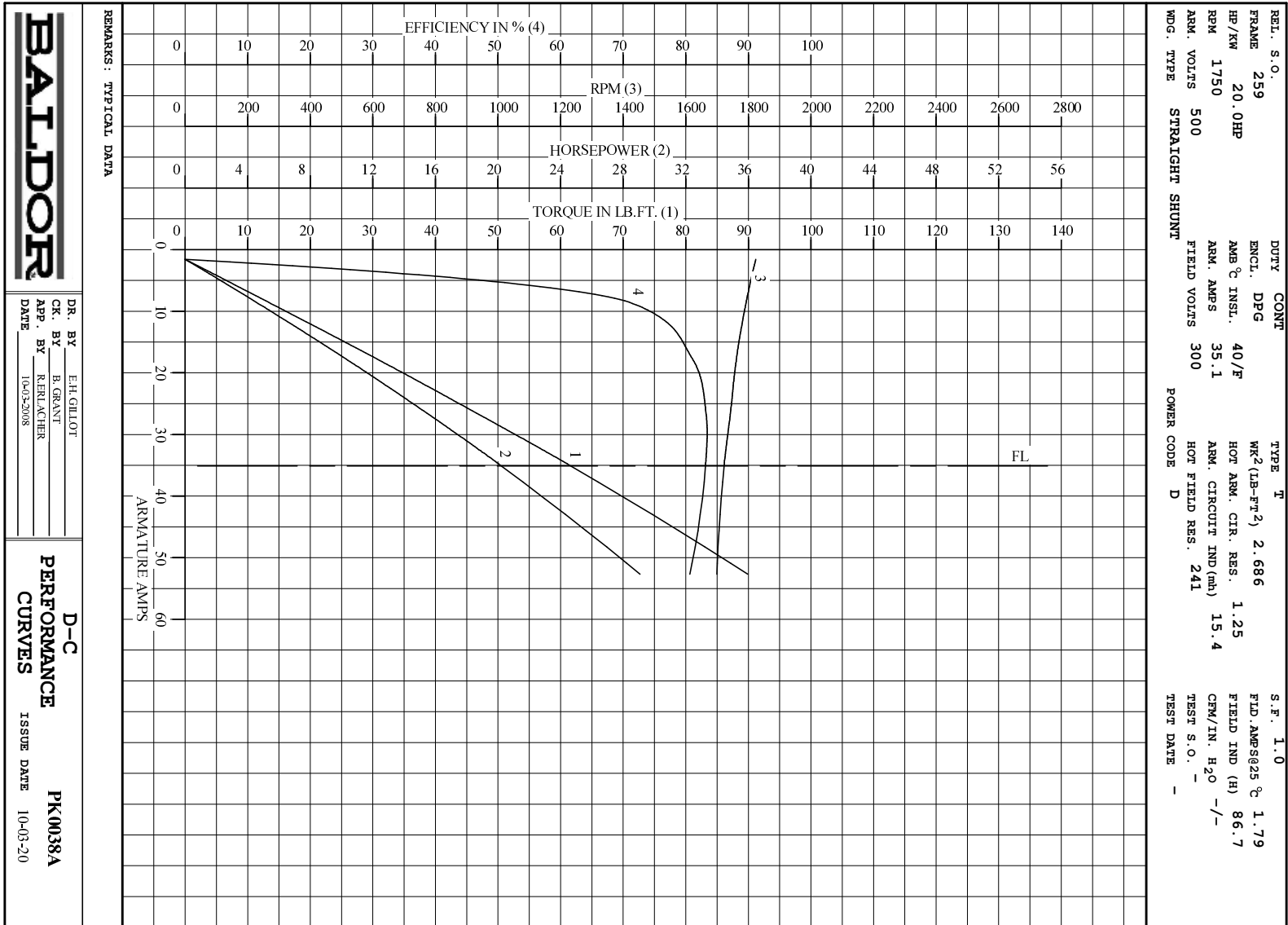
LOAD PERFORMANCE					
LOAD	AMPERES	TORQUE IN LB.-FT.	OUTPUT IN HP	RPM	% EFFICIENCY
NO LOAD	1.6	0	0	1824	0
1/4	8.8	13.8	4.70	1792	71.6
2/4	18	30.3	10.2	1762	81.0
3/4	26	46.2	15.3	1743	83.2
4/4	35	61.6	20.2	1723	83.2
O.L.	53	89.9	29.1	1699	80.6

RPM VS. FIELD AMPS			Eg VS. FIELD AMPS		
FIELD AMPS	RPM N.L.	RPM F.L.	Eg N.L. @ BASE SPEED	Eg F.L. @ BASE SPEED	
1.24	1823	1722	477	463	
1.10	1863	1784	465	444	
.967	1944	1892	445	419	
.830	2086	2054	417	386	
.693	2318	2300	377	344	

REMARKS: TYPICAL DATA

BALDOR	DR. BY E. H. GILLOT	D-C MOTOR PERFORMANCE DATA
	CK. BY B. GRANT	
	APP. BY R. RELANCHE	DK0038A
	DATE 10-03-2008	ISSUE DATE 10-03-2008





DR. BY _____ E.H. GILLOT
 CK. BY _____ B. GRANT
 APP. BY _____ R. REINACHER
 DATE _____ 10-03-2008

D-C
PERFORMANCE
CURVES

ISSUE DATE 10-03-20
 PK0038A