

# **BALDOR® • RELIANCE**

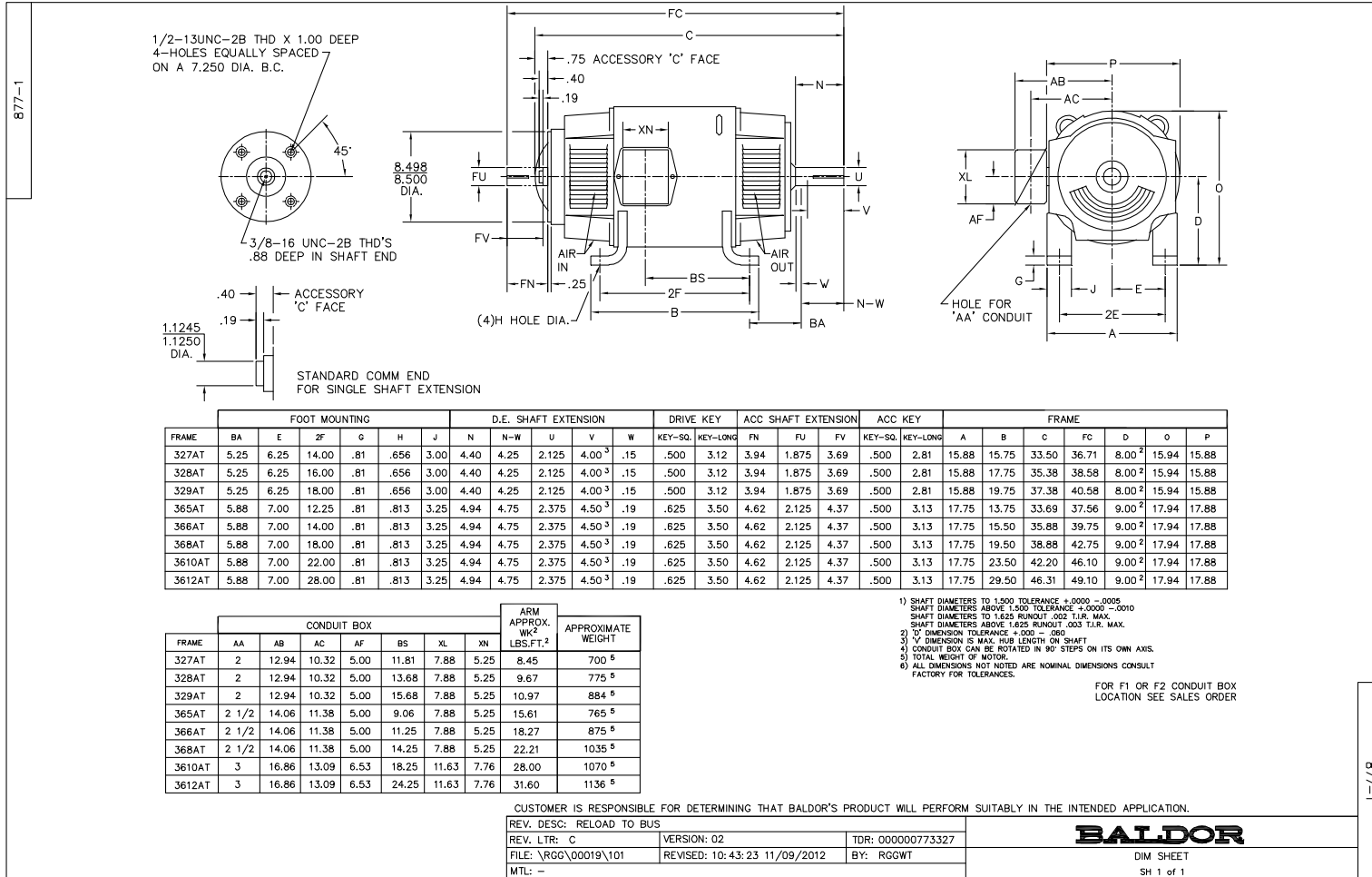
## **Product Information Packet**

### **D5040P**

**40HP, 1750/2100RPM, DC, 328AT, DPFG, F1**

Copyright © All product information within this document is subject to Baldor Electric Company copyright © protection, unless otherwise noted.

Part Detail			
Type:	DC	Prod. Type:	T
Power Code:	D	Weight:	784
Frame Group:	0328AT	Mounting Pos.:	F1
HP:	40	Enclosure:	DPFG
RPM:	1750/2100	Wound:	STR. SHUNT
Service Factor:	1.0	Arm V:	500
Arm A:	67.90	Field V:	150/ 300
Field A:	6.80/3.40	Field A Hot:	4.34-3.00/2.17-
Insulation Class:	F	Ambient:	40
Duty:	CONT	DE Bearing:	6211
ODE Bearing:	6210	Brushes:	28610-2
Brush Qty.:			



FRAME	FOOT MOUNTING							D.E. SHAFT EXTENSION				DRIVE KEY		ACC SHAFT EXTENSION			ACC KEY		FRAME						
	BA	E	2F	G	H	J	N	N-W	U	V	W	KEY-SQ.	KEY-LONG	FN	FU	FV	KEY-SQ.	KEY-LONG	A	B	C	FC	D	O	P
327AT	5.25	6.25	14.00	.81	.656	3.00	4.40	4.25	2.125	4.00 <sup>3</sup>	.15	.500	3.12	3.94	1.875	3.69	.500	2.81	15.88	15.75	33.50	36.71	8.00 <sup>2</sup>	15.94	15.88
328AT	5.25	6.25	16.00	.81	.656	3.00	4.40	4.25	2.125	4.00 <sup>3</sup>	.15	.500	3.12	3.94	1.875	3.69	.500	2.81	15.88	17.75	35.38	38.58	8.00 <sup>2</sup>	15.94	15.88
329AT	5.25	6.25	18.00	.81	.656	3.00	4.40	4.25	2.125	4.00 <sup>3</sup>	.15	.500	3.12	3.94	1.875	3.69	.500	2.81	15.88	19.75	37.38	40.58	8.00 <sup>2</sup>	15.94	15.88
365AT	5.88	7.00	12.25	.81	.813	3.25	4.94	4.75	2.375	4.50 <sup>3</sup>	.19	.625	3.50	4.62	2.125	4.37	.500	3.13	17.75	13.75	33.69	37.56	9.00 <sup>2</sup>	17.94	17.88
366AT	5.88	7.00	14.00	.81	.813	3.25	4.94	4.75	2.375	4.50 <sup>3</sup>	.19	.625	3.50	4.62	2.125	4.37	.500	3.13	17.75	15.50	35.88	39.75	9.00 <sup>2</sup>	17.94	17.88
368AT	5.88	7.00	16.00	.81	.813	3.25	4.94	4.75	2.375	4.50 <sup>3</sup>	.19	.625	3.50	4.62	2.125	4.37	.500	3.13	17.75	19.50	38.88	42.75	9.00 <sup>2</sup>	17.94	17.88
3610AT	5.88	7.00	22.00	.81	.813	3.25	4.94	4.75	2.375	4.50 <sup>3</sup>	.19	.625	3.50	4.62	2.125	4.37	.500	3.13	17.75	23.50	42.20	46.10	9.00 <sup>2</sup>	17.94	17.88
3612AT	5.88	7.00	28.00	.81	.813	3.25	4.94	4.75	2.375	4.50 <sup>3</sup>	.19	.625	3.50	4.62	2.125	4.37	.500	3.13	17.75	29.50	46.31	49.10	9.00 <sup>2</sup>	17.94	17.88

FRAME	CONDUIT BOX							ARM APPROX. WK <sup>2</sup> LBS.FT. <sup>2</sup>	APPROXIMATE WEIGHT
	AA	AB	AC	AF	BS	XL	XN		
327AT	2	12.94	10.32	5.00	11.81	7.88	5.25	8.45	700 <sup>5</sup>
328AT	2	12.94	10.32	5.00	13.68	7.88	5.25	9.67	775 <sup>5</sup>
329AT	2	12.94	10.32	5.00	15.68	7.88	5.25	10.97	884 <sup>5</sup>
365AT	2 1/2	14.06	11.38	5.00	9.06	7.88	5.25	15.61	765 <sup>5</sup>
366AT	2 1/2	14.06	11.38	5.00	11.25	7.88	5.25	18.27	875 <sup>5</sup>
368AT	2 1/2	14.06	11.38	5.00	14.25	7.88	5.25	22.21	1035 <sup>5</sup>
3610AT	3	16.86	13.09	6.53	18.25	11.63	7.76	28.00	1070 <sup>5</sup>
3612AT	3	16.86	13.09	6.53	24.25	11.63	7.76	31.60	1136 <sup>5</sup>

1) SHAFT DIAMETERS TO 1.500 TOLERANCE +.0000 - .0005  
 SHAFT DIAMETERS ABOVE 1.500 TOLERANCE +.0000 - .0010  
 SHAFT DIAMETERS TO 1.625 RUNOUT .002 T.I.R. MAX.  
 SHAFT DIAMETERS ABOVE 1.625 RUNOUT .003 T.I.R. MAX.  
 2) 'D' DIMENSION TOLERANCE +.000 - .060  
 3) 'V' DIMENSION IS MAX. IUB LENGTH ON SHAFT  
 4) CONDUIT BOX CAN BE ROTATED IN 90° STEPS ON ITS OWN AXIS.  
 5) TOTAL WEIGHT OF MOTOR.  
 6) ALL DIMENSIONS NOT NOTED ARE NOMINAL DIMENSIONS CONSULT FACTORY FOR TOLERANCES.

FOR F1 OR F2 CONDUIT BOX LOCATION SEE SALES ORDER

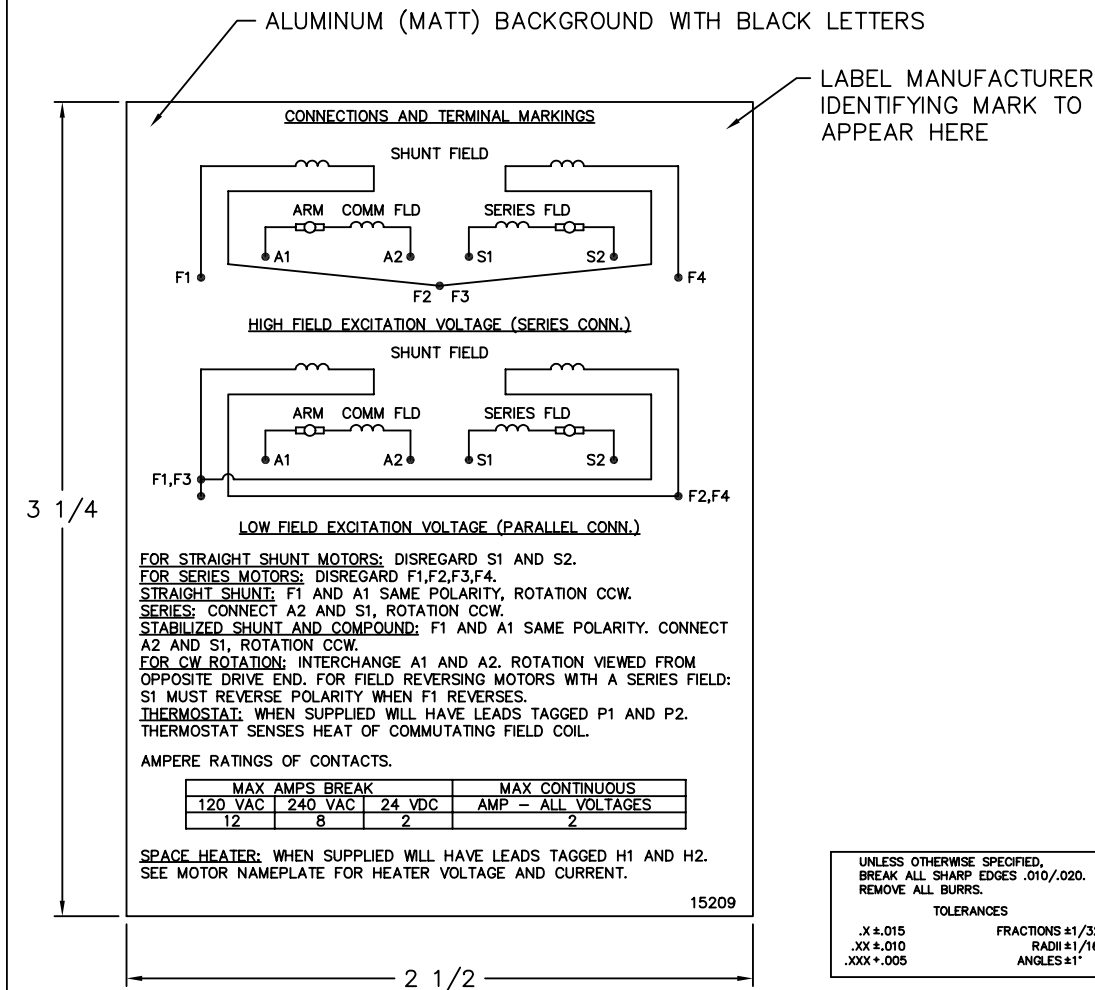
CUSTOMER IS RESPONSIBLE FOR DETERMINING THAT BALDOR'S PRODUCT WILL PERFORM SUITABLY IN THE INTENDED APPLICATION.

REV. DESC: RELOAD TO BUS		
REV. LTR: C	VERSION: 02	TDR: 00000773327
FILE: \RGG\00019\101	REVISED: 10:43:23 11/09/2012	BY: RGGWT
MTL: -		

**BALDOR**

DIM SHEET  
SH 1 of 1

15209



**NOTE:**  
 MATERIAL .005 MINIMUM FULL HARD ALUMINUM DULL FINISH.  
 TEMP. RANGE -20°C TO +125°C MAXIMUM.  
 FOR INDOOR AND OUTDOOR MOUNTING BACK.  
 METAL, PRESSURE SENSITIVE BACK. MUST MEET CSA STANDARD.  
 THE CSA IDENTIFYING MARK OF THE LABEL MANUFACTURER MUST APPEAR IN THE UPPER RIGHT HAND CORNER AS INDICATED.

MATL: NOTED			
REV:	G	CHANGE ALL "NAMEPLATE" TEXT TO "LABEL"	
60291	SCALE: -	BY: BKW	REVISED: 02/19/97
	FILE: CHB00002485	TDR: 0115147	

**BALDOR ELECTRIC Co.**

LABEL, CONNECTIONS AND TERMINAL MARKINGS DC

15209


REL. S. O.	FRAME	RATING	RPM	ARM. VOLTS	ARM. AMPS
	328	40.0HP	1750	500	67.9
WINDING TYPE		S.F.	ENCL.	AMB °C/INSUL	DUTY
STRAIGHT SHUNT		1.0	DRG	40/F	CONT
					300
POWER CODE	TYPE	WK 2 (LB-FT <sup>2</sup> )	HOT ARM. CIR. RES.	FLD. AMPS@25 °C	HOT FIELD RES
D	T	7.377	.495	3.39	138

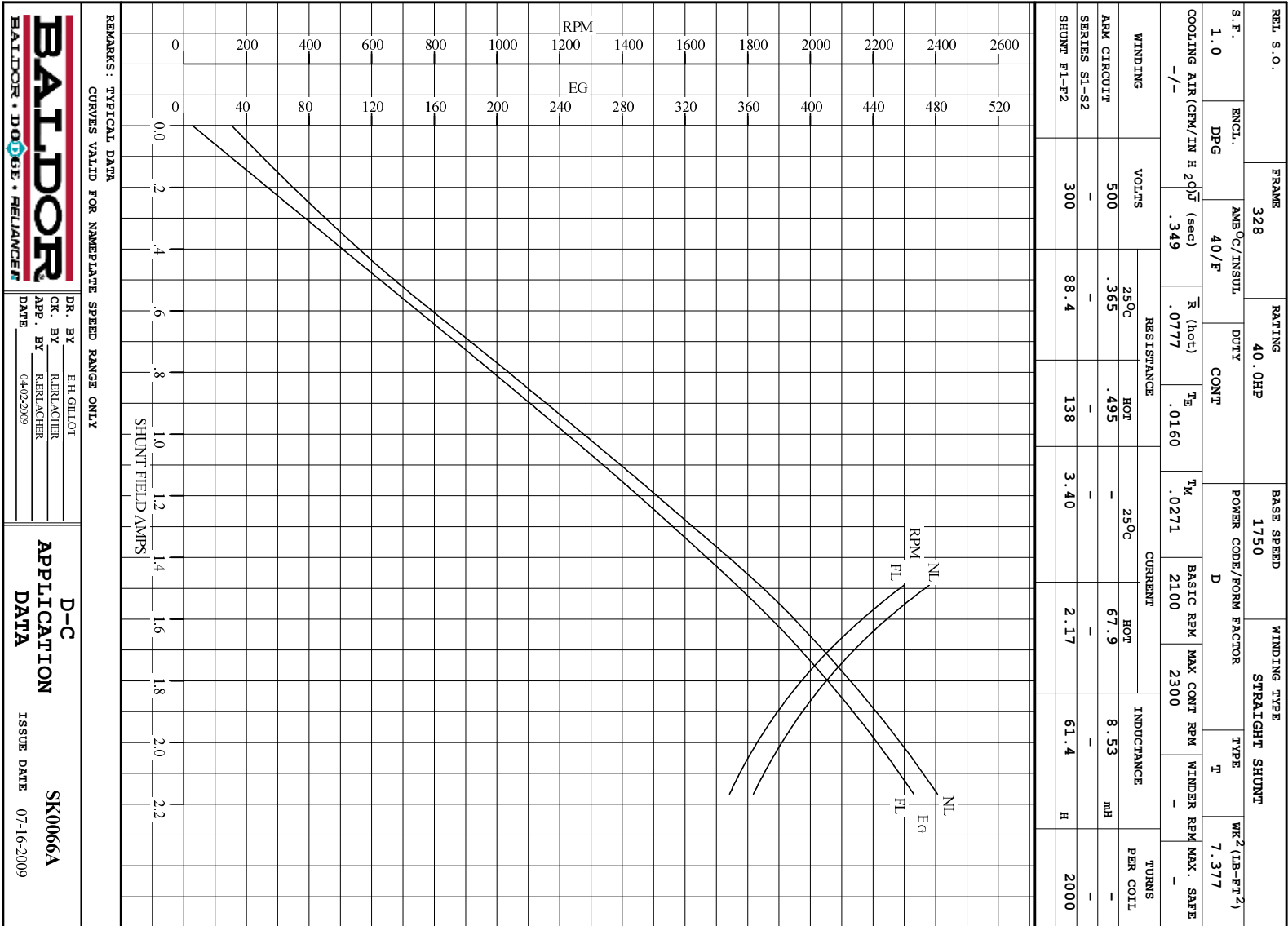
ARM. CIR. IND. (mh)	FIELD IND. (H)	COOLING AIR (CFM/IN H 20)	TURNS PER COIL SHUNT/SERIES	TEST DATE
8.53	61.3	-/-	2000/.00000	-

LOAD PERFORMANCE					
LOAD	AMPERES	TORQUE IN LB.-FT.	OUTPUT IN HP	RPM	% EFFICIENCY
NO LOAD	2.4	0	0	1812	0
1/4	17	27.9	9.51	1790	75.7
2/4	34	60.0	20.2	1769	84.0
3/4	51	91.4	30.5	1752	86.0
4/4	68	121	40.3	1745	86.0
O.L.	102	176	58.5	1751	84.1

RPM VS. FIELD AMPS		Eg VS. FIELD AMPS		
FIELD AMPS	RPM N.L.	RPM F.L.	Eg N.L. @ BASE SPEED	Eg F.L. @ BASE SPEED
2.16	1811	1745	481	465
1.99	1910	1831	459	443
1.82	2028	1949	432	416
1.65	2180	2102	401	386
1.48	2380	2300	366	352

REMARKS: TYPICAL DATA

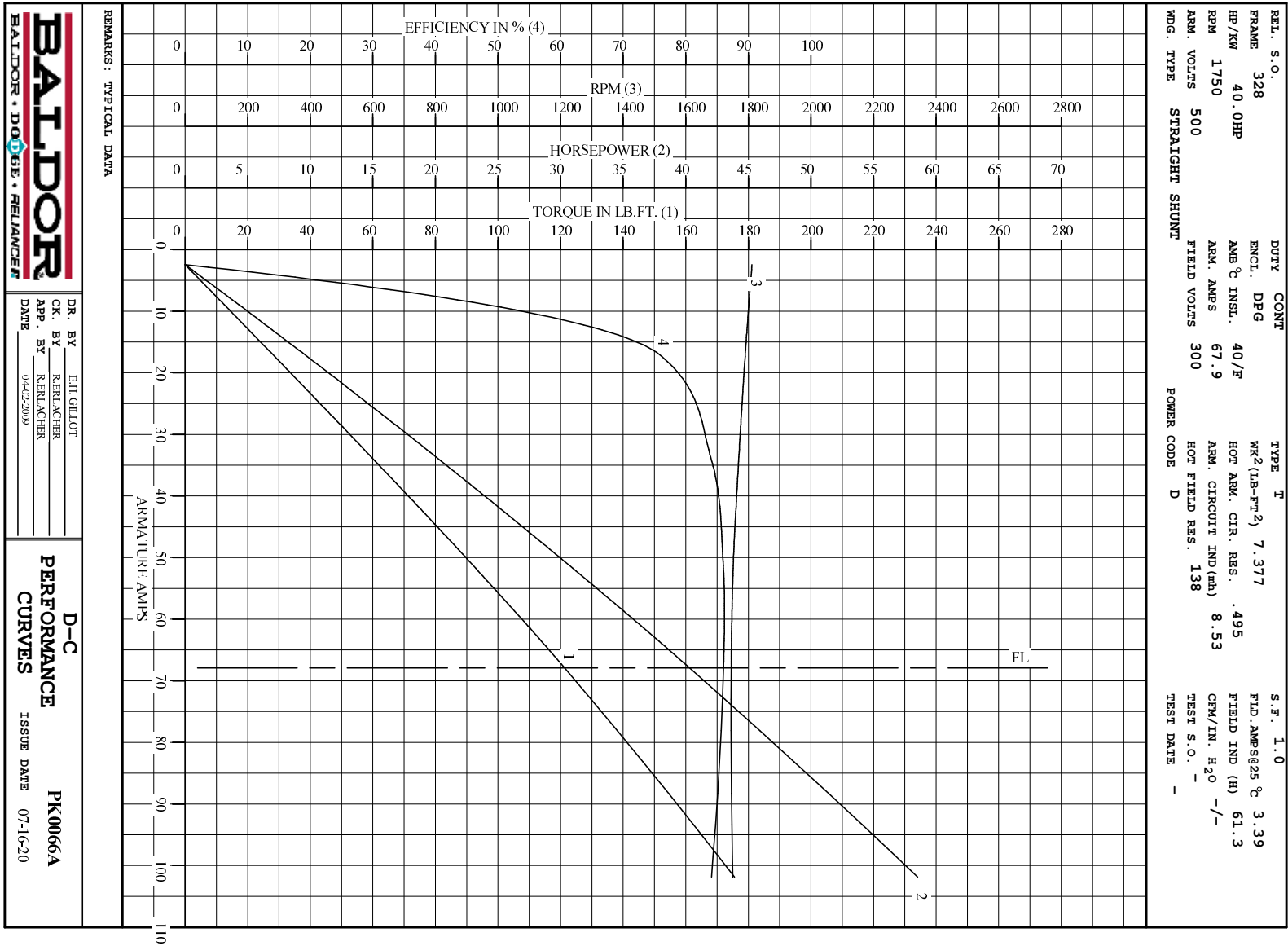
 BALDOR • DOUG • RELIANCE	DR. BY E. H. GILLIOT	D-C MOTOR PERFORMANCE DATA DK0066A ISSUE DATE 07-16-2009
	CK. BY R. BRANCHER APP. BY R. BRANCHER DATE 04-02-2009	



DR. BY E.H.GILLOT  
 CK. BY R.FERLACHER  
 APP. BY R.FERLACHER  
 DATE 04/02/09

**D-C APPLICATION DATA**

SK0066A  
 ISSUE DATE 07-16-2009



**BALDOR**  
BALDOR • DOUG • RELIANCE

DR. BY E.H.GILLOT  
 CK. BY RERLACHER  
 APP. BY RERLACHER  
 DATE 04/02/09

**D-C PERFORMANCE CURVES**  
 ISSUE DATE 07-16-20  
**PK0066A**