

# **BALDOR® • RELIANCE**

## **Product Information Packet**

### **D5050P-BV**

**50HP, 1750/2100RPM, DC, 328AT, DPBV, F1**

Copyright © All product information within this document is subject to Baldor Electric Company copyright © protection, unless otherwise noted.

Part Detail			
Type:	DC	Prod. Type:	TR
Power Code:	D	Weight:	885
Frame Group:	0328AT	Mounting Pos.:	F1
HP:	50	Enclosure:	DPBV
RPM:	1750/2100	Wound:	STR. SHUNT
Service Factor:	1.0	Arm V:	500
Arm A:	83.70	Field V:	300
Field A:	3.12	Field A Hot:	2.00-1.41
Insulation Class:	F	Ambient:	40
Duty:	CONT	DE Bearing:	6211
ODE Bearing:	6210	Brushes:	28610-2
Brush Qty.:			

1336-4

1/2-13UNC-2B THD X 1.00 DEEP, 4-HOLES EQUALLY SPACED ON A 7.250 DIA. B.C.

3/8-16 UNC-2B THD'S .88 DEEP IN SHAFT END

1.1245  
1.1250 DIA.

.40  
.19 ACCESSORY 'C' FACE

STANDARD COMM END FOR SINGLE SHAFT EXTENSION

STANDARD TACHOMETER MOUNTINGS

TACH	XR	LBS	FIG #
XPY	9.00	6.00	1
DPY	6.91	3.00	2
NCS	3.25	7.00	3
AC	2.77	7.00	3
XC42	12.49	25.00	4
XC46	14.50	35.00	4
XPYII	6.89	15.00	5

XC TACH MOUNTING KIT

XPY TACH MOUNTING KIT

COUPLING FOR .313 DIA. SHAFT

1/4-20 UNC-2B THDS, 4-HOLES EQ. SPACED @ 90° ON A 3.975 DIA. B.C. (REF.)

FRAME	BA	E	2F	G	H	J	N	N-W	U	V	W	KEY-SQ.	KEY-LONG	FN	FV	KEY-SQ.	KEY-LONG	A	B	C	D	O	P	
327AT	5.25	6.25	14.00	.81	.656	3.00	4.40	4.25	2.125	4.00 <sup>3</sup>	.15	.500	3.12	3.94	1.875	3.69	.500	2.81	15.88	15.75	32.75	8.00 <sup>2</sup>	15.94	15.88
328AT	5.25	6.25	16.00	.81	.656	3.00	4.40	4.25	2.125	4.00 <sup>3</sup>	.15	.500	3.12	3.94	1.875	3.69	.500	2.81	15.88	17.75	34.63	8.00 <sup>2</sup>	15.94	15.88
329AT	5.25	6.25	18.00	.81	.656	3.00	4.40	4.25	2.125	4.00 <sup>3</sup>	.15	.500	3.12	3.94	1.875	3.69	.500	2.81	15.88	19.75	36.63	8.00 <sup>2</sup>	15.94	15.88
365AT	5.88	7.00	12.25	.81	.813	3.25	4.94	4.75	2.375	4.50 <sup>3</sup>	.19	.625	3.50	4.62	2.125	4.37	.500	3.13	17.75	13.75	32.94	9.00 <sup>2</sup>	17.94	17.88
366AT	5.88	7.00	14.00	.81	.813	3.25	4.94	4.75	2.375	4.50 <sup>3</sup>	.19	.625	3.50	4.62	2.125	4.37	.500	3.13	17.75	15.50	35.13	9.00 <sup>2</sup>	17.94	17.88
368AT	5.88	7.00	18.00	.81	.813	3.25	4.94	4.75	2.375	4.50 <sup>3</sup>	.19	.625	3.50	4.62	2.125	4.37	.500	3.13	17.75	19.50	38.13	9.00 <sup>2</sup>	17.94	17.88
3610AT	5.88	7.00	22.00	.81	.813	3.25	4.94	4.75	2.375	4.50 <sup>3</sup>	.19	.625	3.50	4.62	2.125	4.37	.500	3.13	17.75	23.50	41.45	9.00 <sup>2</sup>	17.94	17.88
3612AT	5.88	7.00	28.00	.81	.813	3.25	4.94	4.75	2.375	4.50 <sup>3</sup>	.19	.625	3.50	4.62	2.125	4.37	.500	3.13	17.75	29.50	45.56	9.00 <sup>2</sup>	17.94	17.88

FRAME	AA	AB	AC	AF	BS	XL	XN	SIZE	XB	XD	XE	XH	XM	XJ	XK	XS	ARM APPROX. WT. LBS.FT. <sup>2</sup>	APPROXIMATE WEIGHT
327AT	2	12.94	10.32	5.00	11.81	7.88	5.25	LM6	19.13	26.38	17.38	10.25	4.19	9.44	11.50	3.75	8.45	738 <sup>5</sup>
328AT	2	12.94	10.32	5.00	13.68	7.88	5.25	LM6	19.13	26.38	17.38	10.25	4.19	9.44	11.50	3.75	9.67	813 <sup>5</sup>
329AT	2	12.94	10.32	5.00	15.68	7.88	5.25	LM6	19.13	26.38	17.38	10.25	4.19	9.44	11.50	3.75	10.97	922 <sup>5</sup>
365AT	2 1/2	14.06	11.38	5.00	9.06	7.88	5.25	LM6	18.88	26.38	18.44	10.25	5.69	10.95	11.50	3.75	15.61	803 <sup>5</sup>
366AT	2 1/2	14.06	11.38	5.00	11.25	7.88	5.25	LM6	18.88	26.38	18.44	10.25	5.69	10.95	11.50	3.75	18.27	913 <sup>5</sup>
368AT	2 1/2	14.06	11.38	5.00	14.25	7.88	5.25	LM6	18.88	26.38	18.44	10.25	5.69	10.95	11.50	3.75	22.21	1073 <sup>5</sup>
3610AT	3	16.86	13.09	6.53	18.25	11.63	7.76	LM9	25.50	28.31	20.94	10.75	5.50	12.38	15.25	3.75	28.00	1109 <sup>5</sup>
3612AT	3	16.86	13.09	6.53	24.25	11.63	7.76	LM9	25.50	28.31	20.94	10.75	5.50	12.38	15.25	3.75	31.60	1145 <sup>5</sup>

1) SHAFT DIAMETERS TO 1.500 TOLERANCE +.0000 -.0005  
SHAFT DIAMETERS ABOVE 1.500 TOLERANCE +.0000 -.0010  
SHAFT DIAMETERS TO 1.625 RUNOUT .002 T.I.R. MAX.  
SHAFT DIAMETERS ABOVE 1.625 RUNOUT .003 T.I.R. MAX.

2) 'D' DIMENSION TOLERANCE +.000 -.060

3) 'V' DIMENSION IS MAX. HUB LENGTH ON SHAFT

4) CONDUIT BOX CAN BE ROTATED IN 90° STEPS ON ITS OWN AXIS.

5) TOTAL WEIGHT OF MOTOR AND BLOWER LESS TACH WEIGHT.

6) ALL DIMENSIONS NOT NOTED ARE NOMINAL DIMENSIONS CONSULT FACTORY FOR TOLERANCES.

FOR F1 OR F2 CONDUIT BOX LOCATION SEE SALES ORDER

CUSTOMER IS RESPONSIBLE FOR DETERMINING THAT BALDOR'S PRODUCT WILL PERFORM SUITABLY IN THE INTENDED APPLICATION.

REV. DESC: REV. "D" DIM TO +.000 -.060 ONLY	VERSION: 01	TDR: 000000752448
REV. LTR: G	FILE: \RGG\00019\490	REVISED: 01:55:17 06/19/2012
MTL: -	BY: RGGNAS	

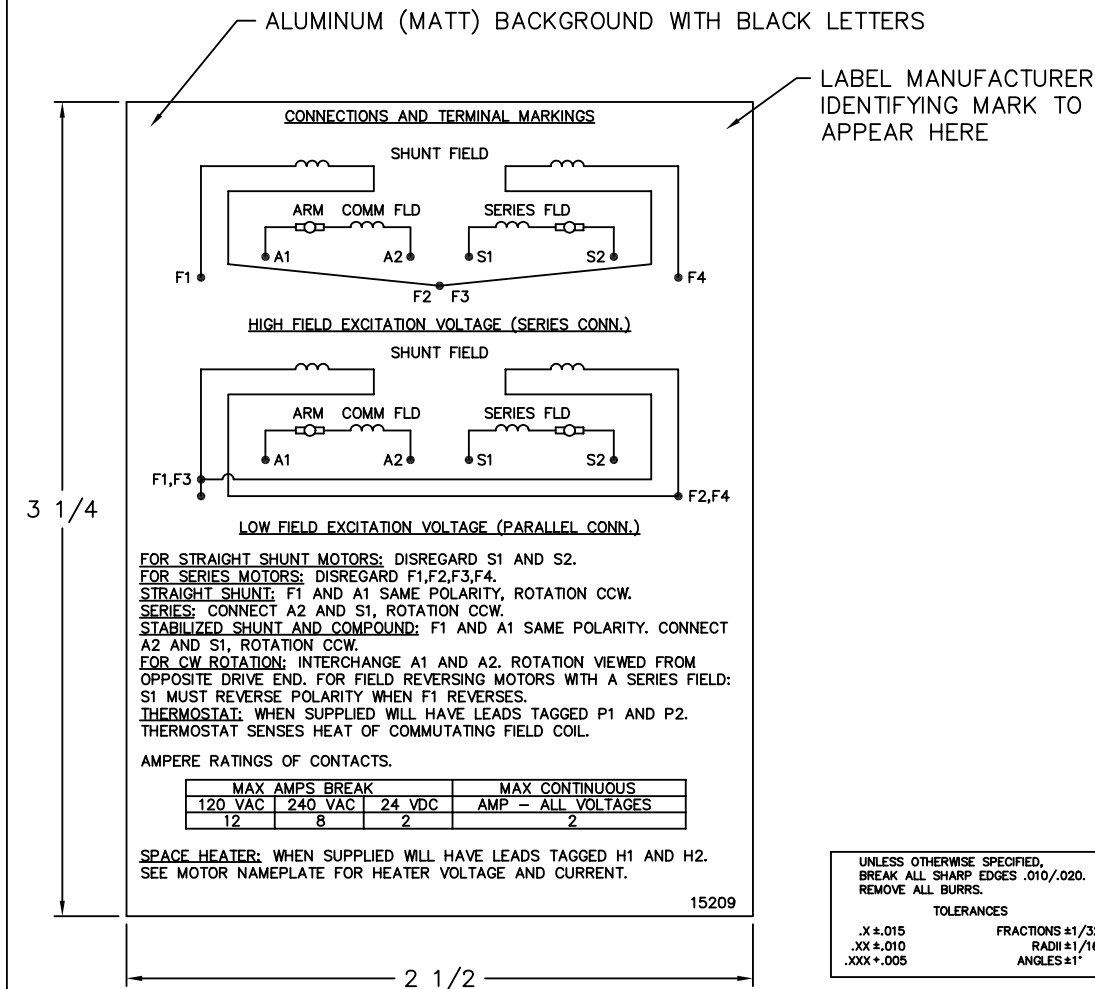
# BALDOR

DIM SHEET: 327-3612AT,DPBV,W/TACH

SH 1 of 1

1336-4

15209



**NOTE:**  
 MATERIAL .005 MINIMUM FULL HARD ALUMINUM DULL FINISH.  
 TEMP. RANGE -20°C TO +125°C MAXIMUM.  
 FOR INDOOR AND OUTDOOR MOUNTING BACK.  
 METAL, PRESSURE SENSITIVE BACK. MUST MEET CSA STANDARD.  
 THE CSA IDENTIFYING MARK OF THE LABEL MANUFACTURER MUST APPEAR IN THE UPPER RIGHT HAND CORNER AS INDICATED.

MATL: NOTED			
REV:	G	CHANGE ALL "NAMEPLATE" TEXT TO "LABEL"	
60291	SCALE: -	BY: BKW	REVISED: 02/19/97
	FILE: CHB00002485	TDR: 0115147	

**BALDOR ELECTRIC Co.**

LABEL, CONNECTIONS AND TERMINAL MARKINGS DC

15209


REL. S. O.	FRAME	RATING	RPM	ARM. VOLTS	ARM. AMPS	
	0328	50.0HP	1750	500	83.7	
WINDING TYPE		S.F.	ENCL.	AMB °C/INSUL	DUTY	FIELD VOLTS
STRAIGHT SHUNT		1.0	DRG	40/F	CONT	300
POWER CODE		TYPE	WK 2 (LB-FT <sup>2</sup> )	HOT ARM. CIR. RES.	FLD. AMPS@25 °C	HOT FIELD RES
D		TR	7.377	.451	3.04	150

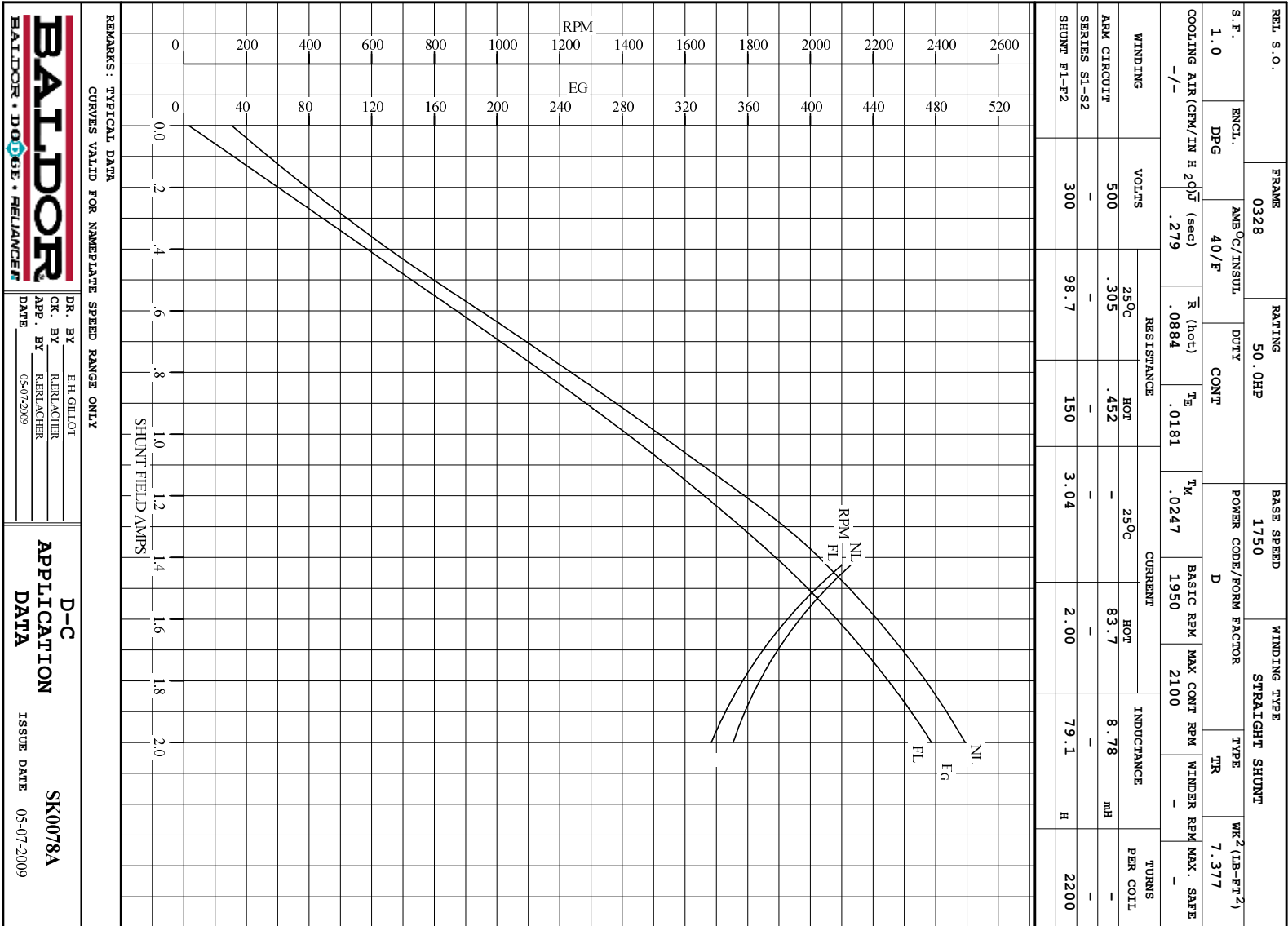
ARM. CIR. IND. (mh)	FIELD IND. (H)	COOLING AIR (CFM/IN H 20)	TURNS PER COIL SHUNT/SERIES	TEST DATE
8.78	79.0	-/-	2200/.00000	-

LOAD PERFORMANCE					
LOAD	AMPERES	TORQUE IN LB.-FT.	OUTPUT IN HP	RPM	% EFFICIENCY
NO LOAD	2.3	0	0	1747	0
1/4	21	37.1	12.2	1722	79.9
2/4	42	78.0	25.3	1700	86.3
3/4	63	117	37.7	1692	87.2
4/4	84	154	49.6	1690	86.5
O.L.	126	220	71.4	1707	83.7

RPM VS. FIELD AMPS			Eg VS. FIELD AMPS		
FIELD AMPS	RPM N.L.	RPM F.L.	Eg N.L. @ BASE SPEED	Eg F.L. @ BASE SPEED	
1.99	1746	1689	498	477	
1.85	1810	1752	484	458	
1.71	1888	1840	465	436	
1.56	1991	1954	440	411	
1.42	2128	2100	411	382	

REMARKS: TYPICAL DATA

	DR. BY E. H. GILLOT	<b>D-C MOTOR PERFORMANCE DATA</b> DK0078A ISSUE DATE 05-07-2009
	CK. BY R. BRANCHER APP. BY R. BRANCHER DATE 05-07-2009	

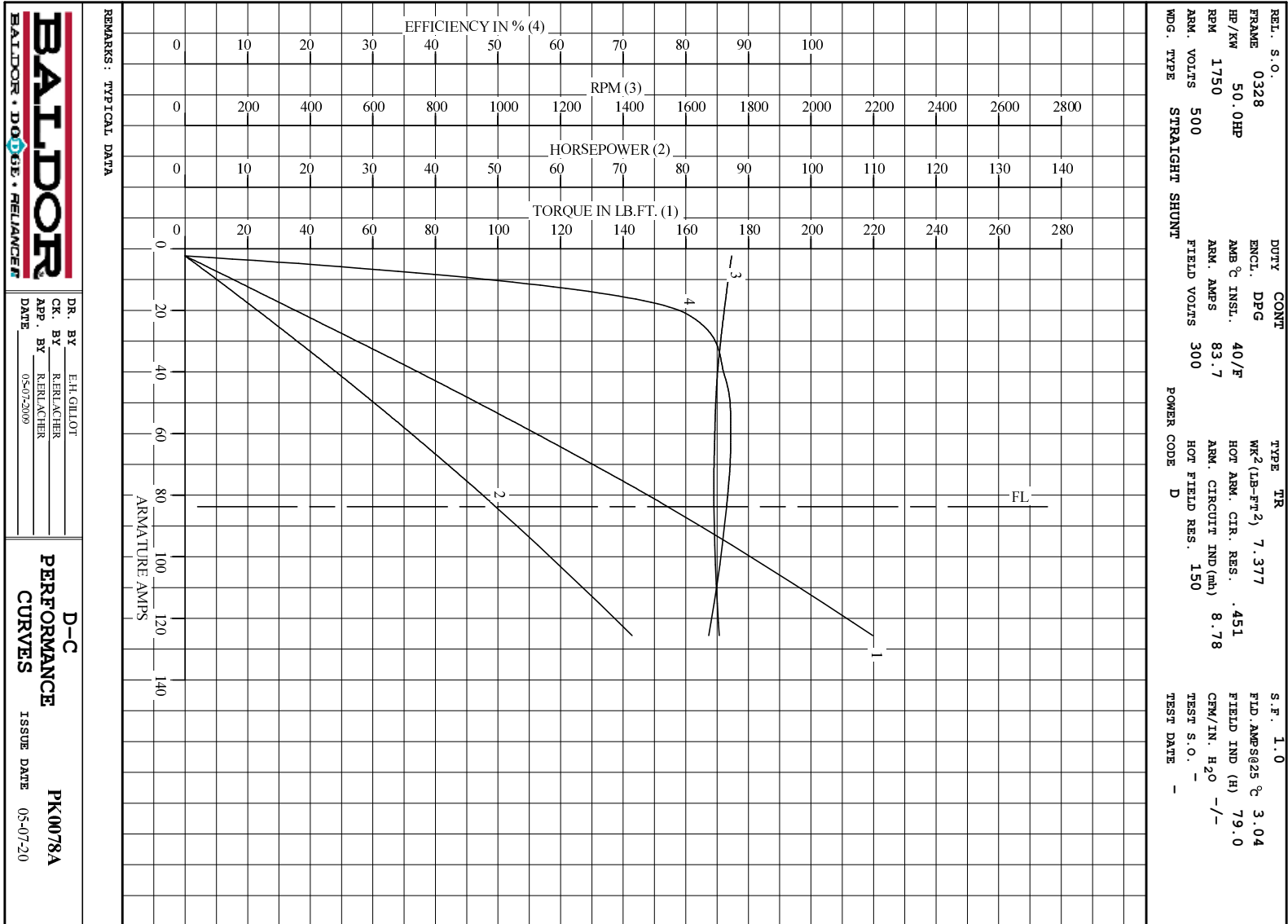


**BALDOR**  
BALDOR • DOUG • RELIANCE

DR. BY E.H.GILLOT  
CK. BY R.FERLACHER  
APP. BY R.FERLACHER  
DATE 05-07-2009

**D-C APPLICATION DATA**

SK0078A  
ISSUE DATE 05-07-2009



**BALDOR**  
BALDOR • DOUG • RELIANCE

DR. BY E.H.GILLOT  
 CK. BY RERLACHER  
 APP. BY RERLACHER  
 DATE 05-07-2009

**D-C**  
**PERFORMANCE**  
**CURVES**  
 ISSUE DATE 05-07-20  
**PK0078A**