

# **BALDOR**® • *RELIANCE*

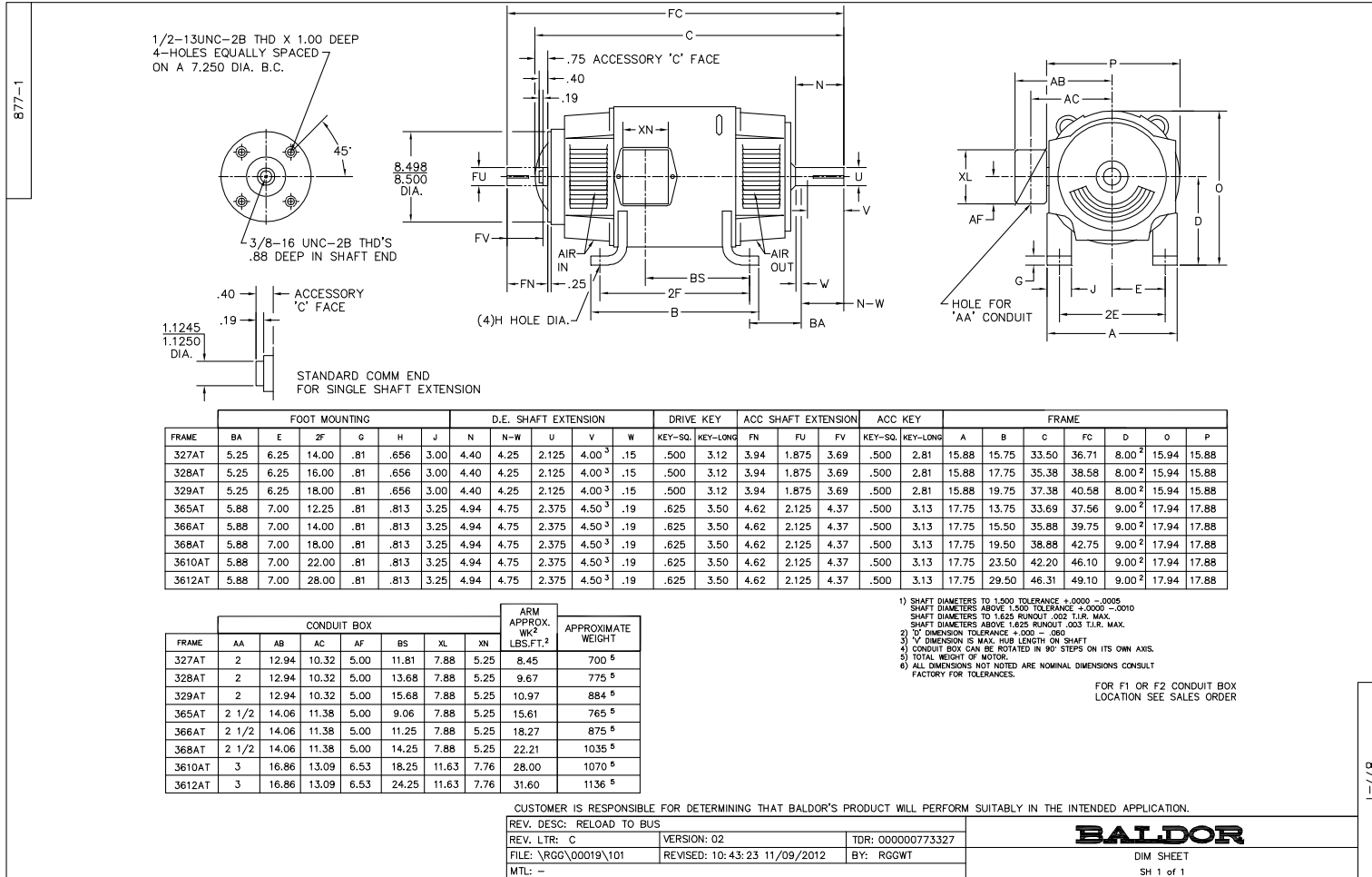
## **Product Information Packet**

# **D5060P**

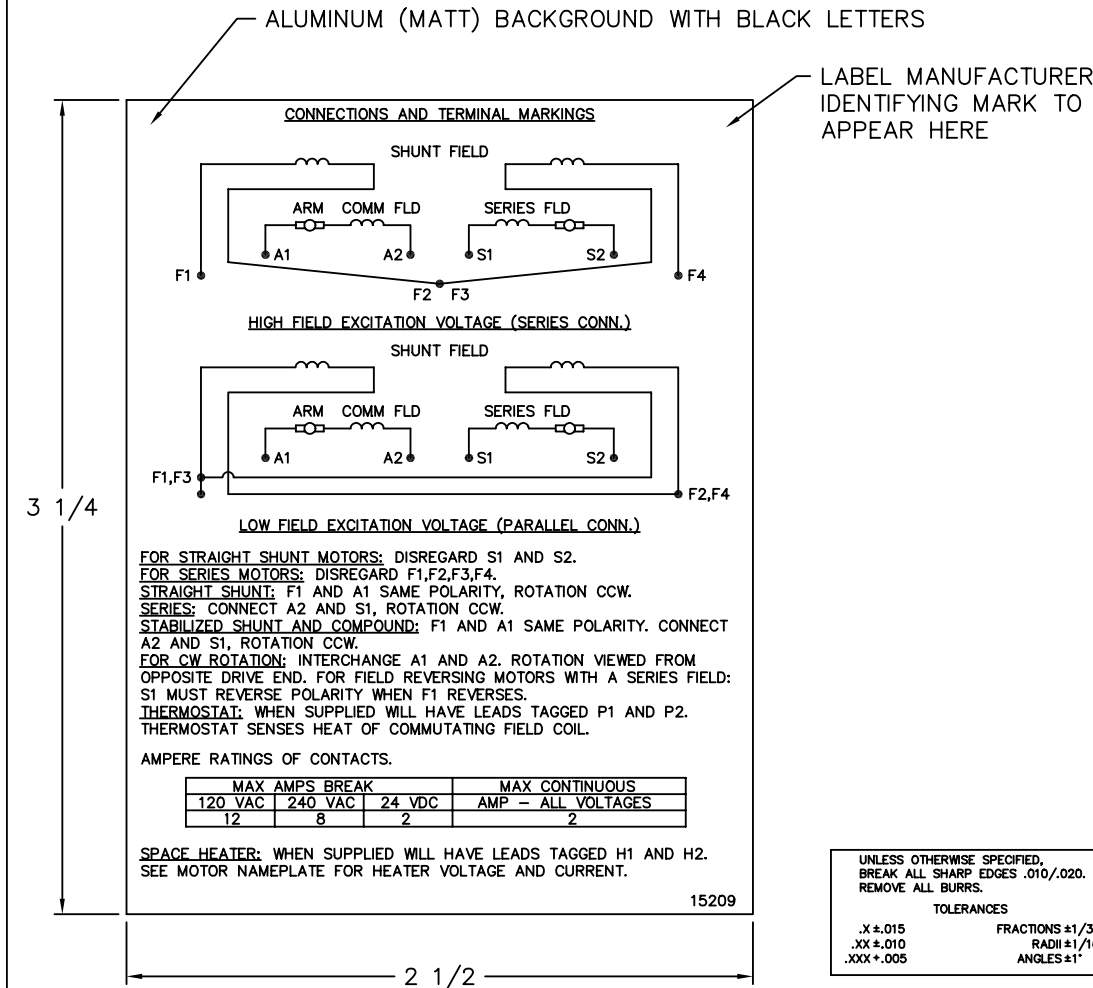
**60HP/1750-2100RPM/DC/366AT**

Copyright © All product information within this document is subject to Baldor Electric Company copyright © protection, unless otherwise noted.

Part Detail			
Type:	DC	Prod. Type:	T
Power Code:	C	Weight:	790
Frame Group:		Mounting Pos.:	F1
HP:	60	Enclosure:	DPFG
RPM:	1750/2100	Wound:	STAB SHUNT
Service Factor:	1.0	Arm V:	500
Arm A:	98.60	Field V:	150/ 300
Field A:	5.86/2.93	Field A Hot:	3.50-2.60/1.75-
Insulation Class:	F	Ambient:	40
Duty:	CONT	DE Bearing:	6213
ODE Bearing:	6211	Brushes:	36024-3
Brush Qty.:			



15209



**NOTE:**  
 MATERIAL .005 MINIMUM FULL HARD ALUMINUM DULL FINISH.  
 TEMP. RANGE -20°C TO +125°C MAXIMUM.  
 FOR INDOOR AND OUTDOOR MOUNTING BACK.  
 METAL, PRESSURE SENSITIVE BACK. MUST MEET CSA STANDARD.  
 THE CSA IDENTIFYING MARK OF THE LABEL MANUFACTURER MUST APPEAR IN THE UPPER RIGHT HAND CORNER AS INDICATED.

MATL: NOTED			
REV:	G	CHANGE ALL "NAMEPLATE" TEXT TO "LABEL"	
60291	SCALE: -	BY: BKW	REVISED: 02/19/97
	FILE: CHB00002485	TDR: 0115147	

**BALDOR ELECTRIC Co.**

LABEL, CONNECTIONS AND TERMINAL MARKINGS DC

15209


REL S.O.	FRAME	RATING	RPM	ARM. VOLTS	ARM. AMPS
	365	60.0HP	1750	500	98.6
WINDING TYPE		S.F.	ENCL.	AMB °C/INSUL	DUTY
STAB. SHUNT		1.0	DPG	40/F	CONT
					300
POWER CODE	TYPE	WK 2 (LB-FT <sup>2</sup> )	HOT ARM. CIR. RES.	FLD. AMPS@25 °C	HOT FIELD RES
C	T	13.13	.313	2.92	171

ARM. CIR. IND. (mh)	FIELD IND. (H)	COOLING AIR (CFM/IN H 20)	TURNS PER COIL SHUNT/SERIES	TEST DATE
5.21	47.9	-/-	1500/3	-

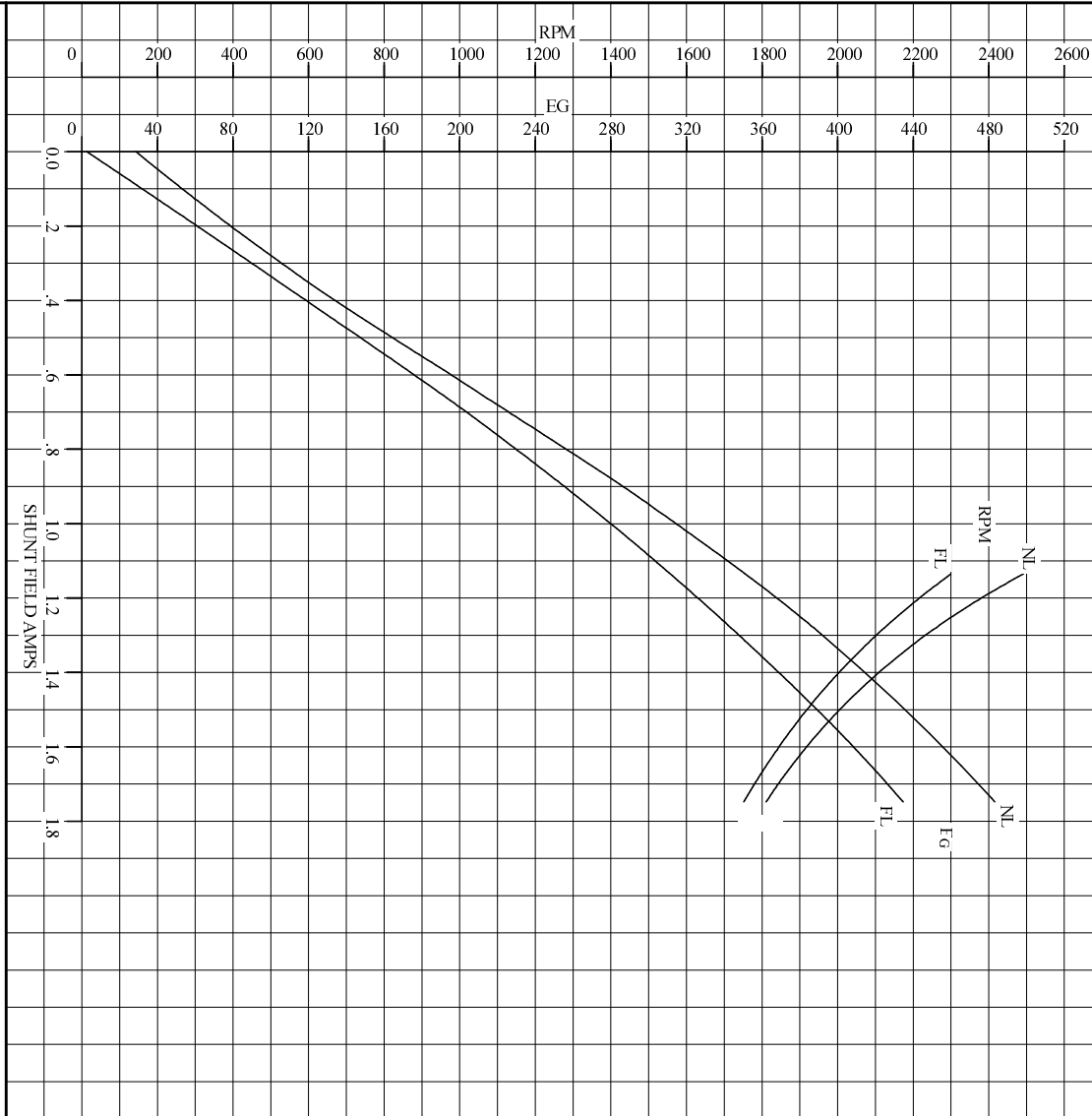
LOAD PERFORMANCE					
LOAD	AMPERES	TORQUE IN LB.-FT.	OUTPUT IN HP	RPM	% EFFICIENCY
NO LOAD	1.8	0	0	1802	0
1/4	25	44.5	15.0	1767	86.1
2/4	49	92.1	30.6	1744	90.2
3/4	74	137	45.6	1741	90.4
4/4	99	180	59.9	1753	89.5
O.L.	148	251	86.8	1812	86.8

RPM VS. FIELD AMPS		Eg VS. FIELD AMPS		
FIELD AMPS	RPM N.L.	RPM F.L.	Eg N.L. @ BASE SPEED	Eg F.L. @ BASE SPEED
1.74	1802	1753	483	434
1.59	1922	1848	455	407
1.44	2064	1967	423	377
1.28	2248	2114	389	345
1.13	2491	2300	351	311

REMARKS: TYPICAL DATA

	DR. BY E. H. GILLOT	<b>D-C MOTOR PERFORMANCE DATA</b> DK0068A ISSUE DATE 04-17-2009
	CK. BY B. GRANT APP. BY R. BRANCHER DATE 04-17-2009	

REL. S.O.	FRAME	365	RATING	60.0HP	BASE SPEED	1750	WINDING TYPE	STAB SHUNT
S.F. 1.0	ENCL. DPG	AMB°C/INSUL 40/F	DUTY CONT	POWER CODE/FORM FACTOR	C	BASIC RPM	MAX CONT RPM	2300
COOLING AIR (CFM/IN H <sup>2</sup> O) (sec)	R (hot)	T <sub>e</sub>	T <sub>m</sub>	INDUCTANCE	TURNS PER COIL	WINDER RPM	MAX. SAFE	
-/-	.414	.0709	.0155	1900	-	-	-	
WINDING	VOLTS	RESISTANCE		CURRENT		INDUCTANCE		TURNS PER COIL
ARM CIRCUIT	500	25°C	HOT	25°C	HOT	5.22	mH	-
SERIES S1-S2	-	.226	.313	-	98.6	-	-	3.00
SHUNT F1-F2	300	.00753	.0110	1.75	1.75	48.0	H	1500



REMARKS: TYPICAL DATA  
CURVES VALID FOR NAMEPLATE SPEED RANGE ONLY

<b>BALDOR</b>		DR. BY	E.H.GILLOT	<b>D-C</b>
<b>BALDOR • DOUG • RELIANCE</b>		CK. BY	B.GRANT	
		APP. BY	R.RIEMER	
		DATE	04-17-2009	<b>APPLICATION DATA</b>
				ISSUE DATE
				04-17-2009
				<b>SK0068A</b>

