

# **BALDOR® • RELIANCE**

## **Product Information Packet**

### **D5075P**

**75HP, 1750/2100RPM, DC, 366AT, DPFG, F1**

Copyright © All product information within this document is subject to Baldor Electric Company copyright © protection, unless otherwise noted.

Part Detail			
Type:	DC	Prod. Type:	TR
Power Code:	D	Weight:	905
Frame Group:		Mounting Pos.:	F1
HP:	75	Enclosure:	DPFG
RPM:	1750/2100	Wound:	STAB SHUNT
Service Factor:	1.0	Arm V:	500
Arm A:	123.00	Field V:	150/ 300
Field A:	4.48/2.24	Field A Hot:	2.98-2.22/1.49-
Insulation Class:	F	Ambient:	40
Duty:	CONT	DE Bearing:	6213
ODE Bearing:	6211	Brushes:	36024-3
Brush Qty.:			

877-1

1/2-13UNC-2B THD X 1.00 DEEP  
4-HOLES EQUALLY SPACED  
ON A 7.250 DIA. B.C.

3/8-16 UNC-2B THD'S  
.88 DEEP IN SHAFT END

8.498  
8.500  
DIA.

.75 ACCESSORY 'C' FACE

.40

.19

FC

C

N

FN

FU

FV

FN

AIR IN

.25

2F

B

BS

BA

N-W

XL

AF

HOLE FOR 'AA' CONDUIT

AB

P

AC

O

D

J

E

2E

A

STANDARD COMM END  
FOR SINGLE SHAFT EXTENSION

1.1245  
1.1250  
DIA.

.40

.19

ACCESSORY  
'C' FACE

FRAME	FOOT MOUNTING							D.E. SHAFT EXTENSION					DRIVE KEY		ACC SHAFT EXTENSION			ACC KEY		FRAME						
	BA	E	2F	G	H	J	N	N-W	U	V	W	KEY-SQ.	KEY-LONG	FN	FU	FV	KEY-SQ.	KEY-LONG	A	B	C	FC	D	O	P	
327AT	5.25	6.25	14.00	.81	.656	3.00	4.40	4.25	2.125	4.00 <sup>3</sup>	.15	.500	3.12	3.94	1.875	3.69	.500	2.81	15.88	15.75	33.50	36.71	8.00 <sup>2</sup>	15.94	15.88	
328AT	5.25	6.25	16.00	.81	.656	3.00	4.40	4.25	2.125	4.00 <sup>3</sup>	.15	.500	3.12	3.94	1.875	3.69	.500	2.81	15.88	17.75	35.38	38.58	8.00 <sup>2</sup>	15.94	15.88	
329AT	5.25	6.25	18.00	.81	.656	3.00	4.40	4.25	2.125	4.00 <sup>3</sup>	.15	.500	3.12	3.94	1.875	3.69	.500	2.81	15.88	19.75	37.38	40.58	8.00 <sup>2</sup>	15.94	15.88	
365AT	5.88	7.00	12.25	.81	.813	3.25	4.94	4.75	2.375	4.50 <sup>3</sup>	.19	.625	3.50	4.62	2.125	4.37	.500	3.13	17.75	13.75	33.69	37.56	9.00 <sup>2</sup>	17.94	17.88	
366AT	5.88	7.00	14.00	.81	.813	3.25	4.94	4.75	2.375	4.50 <sup>3</sup>	.19	.625	3.50	4.62	2.125	4.37	.500	3.13	17.75	15.50	35.88	39.75	9.00 <sup>2</sup>	17.94	17.88	
368AT	5.88	7.00	16.00	.81	.813	3.25	4.94	4.75	2.375	4.50 <sup>3</sup>	.19	.625	3.50	4.62	2.125	4.37	.500	3.13	17.75	19.50	38.88	42.75	9.00 <sup>2</sup>	17.94	17.88	
3610AT	5.88	7.00	22.00	.81	.813	3.25	4.94	4.75	2.375	4.50 <sup>3</sup>	.19	.625	3.50	4.62	2.125	4.37	.500	3.13	17.75	23.50	42.20	46.10	9.00 <sup>2</sup>	17.94	17.88	
3612AT	5.88	7.00	28.00	.81	.813	3.25	4.94	4.75	2.375	4.50 <sup>3</sup>	.19	.625	3.50	4.62	2.125	4.37	.500	3.13	17.75	29.50	46.31	49.10	9.00 <sup>2</sup>	17.94	17.88	

FRAME	CONDUIT BOX							ARM APPROX. WK <sup>2</sup> LBS.FT. <sup>3</sup>	APPROXIMATE WEIGHT
	AA	AB	AC	AF	BS	XL	XN		
327AT	2	12.94	10.32	5.00	11.81	7.88	5.25	8.45	700 <sup>5</sup>
328AT	2	12.94	10.32	5.00	13.68	7.88	5.25	9.67	775 <sup>5</sup>
329AT	2	12.94	10.32	5.00	15.68	7.88	5.25	10.97	884 <sup>5</sup>
365AT	2 1/2	14.06	11.38	5.00	9.06	7.88	5.25	15.61	765 <sup>5</sup>
366AT	2 1/2	14.06	11.38	5.00	11.25	7.88	5.25	18.27	875 <sup>5</sup>
368AT	2 1/2	14.06	11.38	5.00	14.25	7.88	5.25	22.21	1035 <sup>5</sup>
3610AT	3	16.86	13.09	6.53	18.25	11.63	7.76	28.00	1070 <sup>5</sup>
3612AT	3	16.86	13.09	6.53	24.25	11.63	7.76	31.60	1136 <sup>5</sup>

1) SHAFT DIAMETERS TO 1.500 TOLERANCE +.0000 - .0005  
SHAFT DIAMETERS ABOVE 1.500 TOLERANCE +.0000 - .0010  
SHAFT DIAMETERS TO 1.625 RUNOUT .002 T.I.R. MAX.  
SHAFT DIAMETERS ABOVE 1.625 RUNOUT .003 T.I.R. MAX.  
2) 'D' DIMENSION TOLERANCE +.000 - .060  
3) 'V' DIMENSION IS MAX. IUB LENGTH ON SHAFT  
4) CONDUIT BOX CAN BE ROTATED IN 90° STEPS ON ITS OWN AXIS.  
5) TOTAL HEIGHT OF MOTOR.  
6) ALL DIMENSIONS NOT NOTED ARE NOMINAL DIMENSIONS CONSULT  
FACTORY FOR TOLERANCES.

FOR F1 OR F2 CONDUIT BOX  
LOCATION SEE SALES ORDER

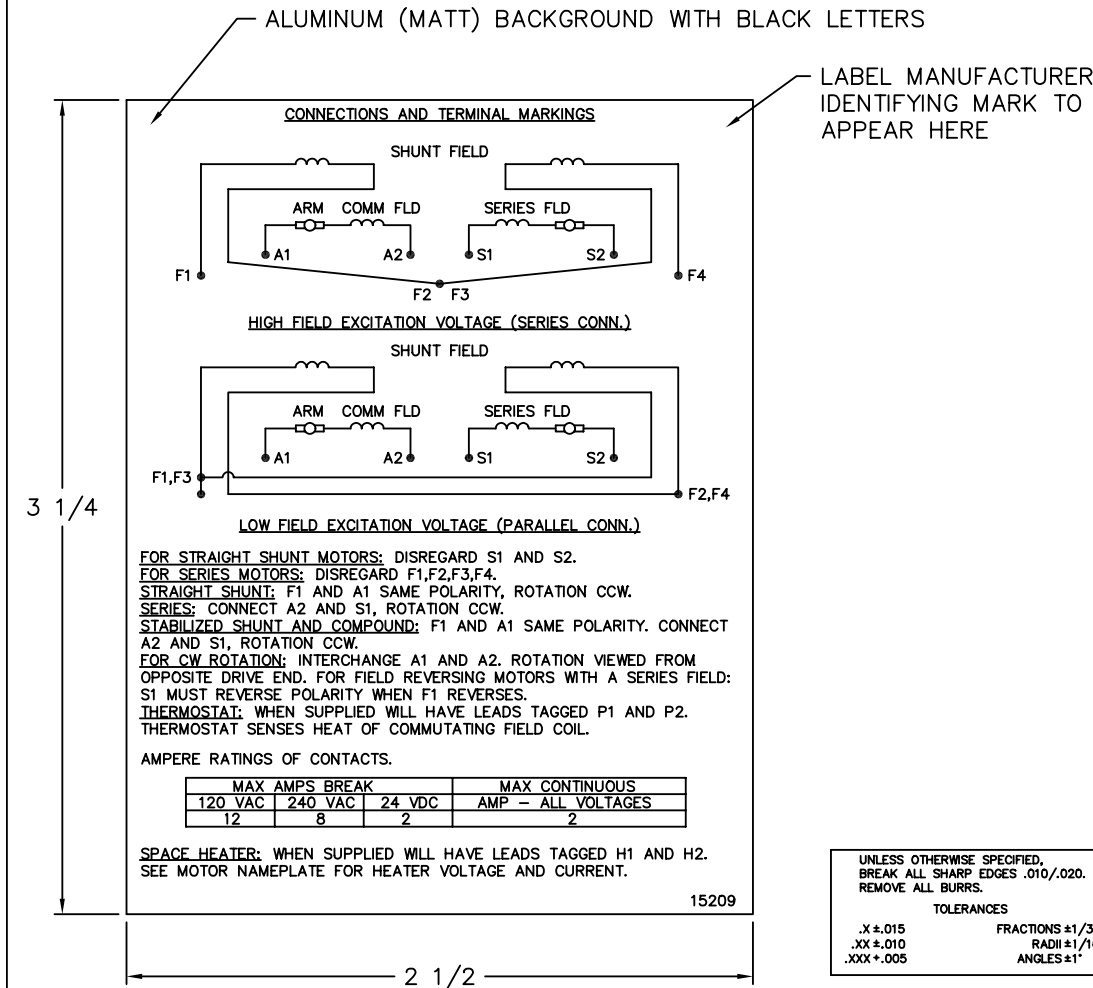
CUSTOMER IS RESPONSIBLE FOR DETERMINING THAT BALDOR'S PRODUCT WILL PERFORM SUITABLY IN THE INTENDED APPLICATION.

REV. DESC: RELOAD TO BUS	VERSION: 02	TDR: 00000773327
REV. LTR: C	REVISED: 10:43:23 11/09/2012	BY: RGGWT
FILE: \RGG\00019\101		
MTL: -		

DIM SHEET  
SH 1 of 1

877-1

15209



**NOTE:**  
 MATERIAL .005 MINIMUM FULL HARD ALUMINUM DULL FINISH.  
 TEMP. RANGE -20°C TO +125°C MAXIMUM.  
 FOR INDOOR AND OUTDOOR MOUNTING BACK.  
 METAL, PRESSURE SENSITIVE BACK. MUST MEET CSA STANDARD.  
 THE CSA IDENTIFYING MARK OF THE LABEL MANUFACTURER MUST APPEAR IN THE UPPER RIGHT HAND CORNER AS INDICATED.

UNLESS OTHERWISE SPECIFIED, BREAK ALL SHARP EDGES .010/.020. REMOVE ALL BURRS.

TOLERANCES

.X ± .015	FRACTIONS ±1/32
.XX ± .010	RADI ±1/16
.XXX ± .005	ANGLES ±1°

MATL: NOTED			
REV:	G	CHANGE ALL "NAMEPLATE" TEXT TO "LABEL"	
60291	SCALE: -	BY: BKW	REVISED: 02/19/97
	FILE: CHB00002485	TDR: 0115147	

**BALDOR ELECTRIC Co.**

LABEL, CONNECTIONS AND TERMINAL MARKINGS DC

15209


REL. S. O.	FRAME	RATING	RPM	ARM. VOLTS	ARM. AMPS	
	366	75.0HP	1750	500	123	
WINDING TYPE		S.F.	ENCL.	AMB °C/INSUL	DUTY	FIELD VOLTS
STAB. SHUNT		1.0	DPG	40/F	CONT	300
POWER CODE		TYPE	WK 2 (LB-FT <sup>2</sup> )	HOT ARM. CIR. RES.	FLD. AMPS@25 °C	HOT FIELD RES
D		TR	16.08	.193	2.23	201

ARM. CIR. IND. (mh)	FIELD IND. (H)	COOLING AIR (CFM/IN H 20)	TURNS PER COIL SHUNT/SERIES	TEST DATE
3.93	72.6	-/-	1600/4	-

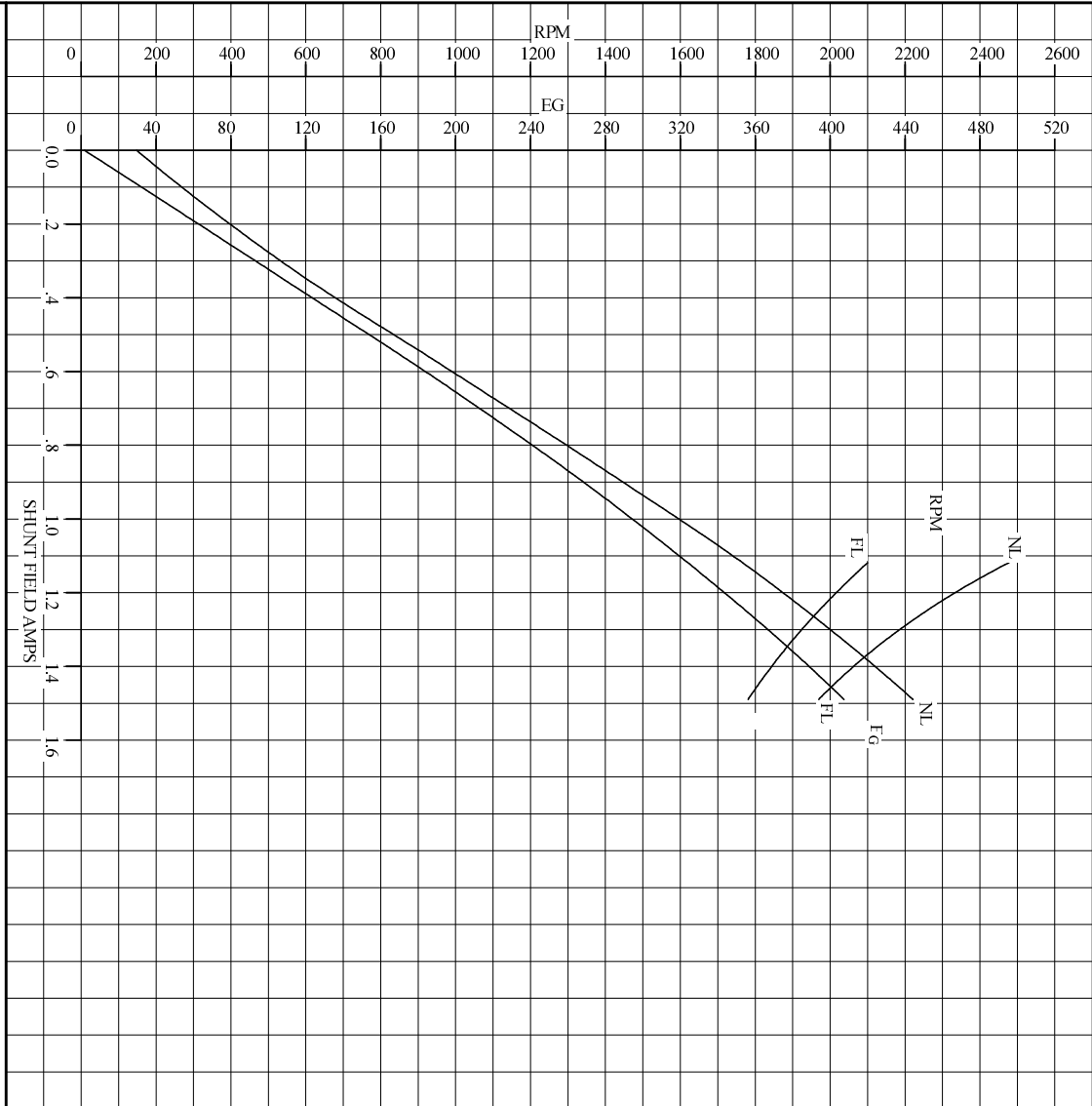
LOAD PERFORMANCE					
LOAD	AMPERES	TORQUE IN LB.-FT.	OUTPUT IN HP	RPM	% EFFICIENCY
NO LOAD	2.4	0	0	1955	0
1/4	31	52.3	18.8	1889	86.6
2/4	62	110	38.5	1833	89.8
3/4	92	168	57.6	1800	90.8
4/4	123	224	76.0	1783	90.4
O.L.	185	327	111	1781	88.6

RPM VS. FIELD AMPS			Eg VS. FIELD AMPS		
FIELD AMPS	RPM N.L.	RPM F.L.	Eg N.L. @ BASE SPEED	Eg F.L. @ BASE SPEED	
1.48	1955	1782	444	407	
1.39	2066	1846	424	387	
1.30	2180	1920	401	367	
1.21	2315	2005	378	346	
1.11	2477	2100	353	324	

REMARKS: TYPICAL DATA

	DR. BY E. H. GILLIOT	<b>D-C MOTOR PERFORMANCE DATA</b> DK0090A ISSUE DATE 05-15-2009
	CK. BY R. ERLACHER APP. BY R. ERLACHER DATE 05-15-2009	

REL. S.O.	FRAME	366	RATING	75.0HP	BASE SPEED	1750	WINDING TYPE	STAB SHUNT
S.F.	ENCL.	AMB°C/INSUL	DUTY	CONT	POWER CODE/FORM FACTOR	D	TYPE	TR
1.0	DPG	40/F						
COOLING AIR (CFM/IN H <sup>2</sup> O)	(sec)	R (hot)	T <sub>e</sub>	T <sub>m</sub>	BASIC RPM	MAX CONT RPM	WINDER RPM	MAX. SAFE
-/-	.405	.0557	.0183	.0226	1950	2100	-	-
WINDING	VOLTS	RESISTANCE		CURRENT		INDUCTANCE		TURNS PER COIL
ARM CIRCUIT	500	25°C	HOT	25°C	HOT			
SERIES S1-S2	-	.138	.194	-	123	3.93 mH		-
SHUNT F1-F2	300	.00610	.00856	-	123			4.00
		134	201	2.24	1.49	72.6 H		1600



REMARKS: TYPICAL DATA  
CURVES VALID FOR NAMEPLATE SPEED RANGE ONLY

**BALDOR** DR. BY E.H.GILLOT  
 CK. BY RERLACHER  
 APP. BY RERLACHER  
 DATE 05-15-2009

**D-C APPLICATION DATA** SK0090A  
 ISSUE DATE 05-15-2009

