

BALDOR® • ***RELIANCE***

Product Information Packet

D5505P

5HP,1750/2300RPM,DC,1810AT,TEFC,TOD

Copyright © All product information within this document is subject to Baldor Electric Company copyright © protection, unless otherwise noted.

Part Detail			
Type:	DC	Prod. Type:	T
Power Code:	D	Weight:	214
Frame Group:	1810AT	Mounting Pos.:	F3
HP:	5	Enclosure:	TEFC
RPM:	1750/2300	Wound:	STR. SHUNT
Service Factor:	1.0	Arm V:	500
Arm A:	8.30	Field V:	300
Field A:	.52	Field A Hot:	.38-.38/.48-.19
Insulation Class:	F	Ambient:	40
Duty:	CONT	DE Bearing:	6206
ODE Bearing:	6205	Brushes:	18044-8
Brush Qty.:			

885-1

FRAME	FOOT MOUNTING				D.E. SHAFT EXTENSION				DRIVE KEY				FRAME				APPROX. NET WT. LBS. (kg)	APPROXIMATE WEIGHT			
	BA	C	2F	G	H	J	K	N-W	U	V	W	KEY-LEN	A	B	C	D			G	P	
L182AT	2.75	3.75	4.50	.38	.406	1.50	2.90	2.77	1.125	2.50 ¹	.13	250	1.38	8.81	5.75	17.00	4.50 ²	9.36	9.71	.28	89 ³
L184AT	2.75	3.75	7.00	.38	.406	1.50	2.90	2.77	1.125	2.50 ¹	.13	250	1.38	8.81	8.25	20.50	4.50 ²	9.36	9.71	.47	175 ³
T181AT	2.75	3.75	11.00	.38	.406	1.50	2.90	2.77	1.125	2.50 ¹	.13	250	1.38	8.81	12.25	23.38	4.50 ²	9.36	9.71	1.0	210 ³

- 1) SHAFT DIAMETERS TO 1.500 TOLERANCE +.0000 - .0005
- SHAFT DIAMETERS ABOVE 1.500 TOLERANCE +.0000 - .0010
- SHAFT DIAMETERS TO 1.625 RUNOUT .002 T.I.R. MAX.
- SHAFT DIAMETERS ABOVE 1.625 RUNOUT .003 T.I.R. MAX.
- 2) 'D' DIMENSION TOLERANCE +.000 - .060
- 3) 'V' DIMENSION IS MAX. HUB LENGTH ON SHAFT
- 4) CONDUIT BOX CAN BE ROTATED IN 90° STEPS ON ITS OWN AXIS.
- 5) TOTAL WEIGHT OF MOTOR AND FAN COOLED PACKAGE.
- 6) ALL DIMENSIONS NOT NOTED ARE NOMINAL DIMENSIONS CONSULT FACTORY FOR TOLERANCES.

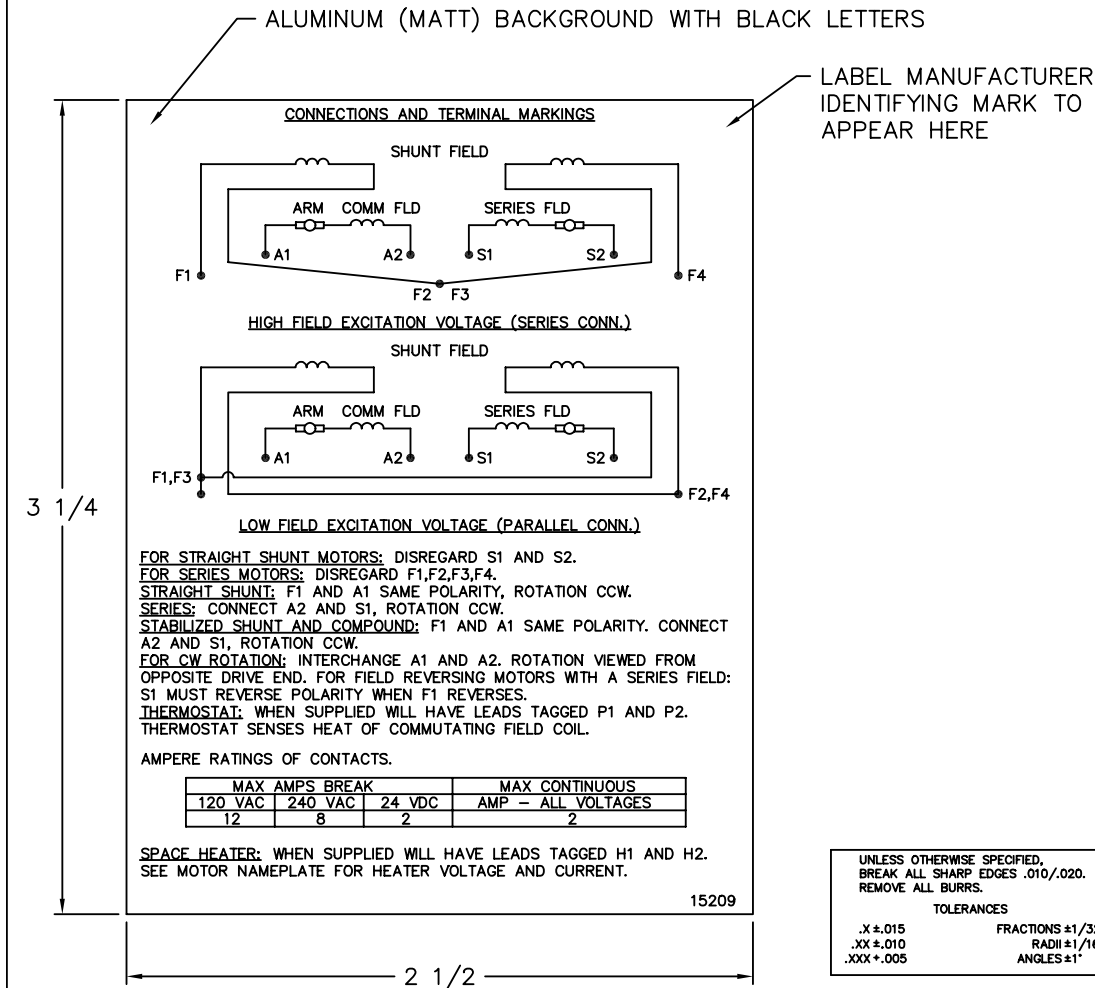
FOR F1 OR F2 CONDUIT BOX LOCATION SEE SALES ORDER

CUSTOMER IS RESPONSIBLE FOR DETERMINING THAT BALDOR'S PRODUCT WILL PERFORM SUITABLY IN THE INTENDED APPLICATION.

REV. DESG: REV. "D" DIM TO +.000 -.060			
REV. LTR: A	VERSION: 01	TDR: 000000752566	BALDOR
FILE: \RGG\00019\541		REVISED: 04:37:28 06/20/2012	DIM SHEET
MTL: -		BY: ROGNAS	91 1 of 1

885-1

15209



NOTE:
 MATERIAL .005 MINIMUM FULL HARD ALUMINUM DULL FINISH.
 TEMP. RANGE -20°C TO +125°C MAXIMUM.
 FOR INDOOR AND OUTDOOR MOUNTING BACK.
 METAL, PRESSURE SENSITIVE BACK. MUST MEET CSA STANDARD.
 THE CSA IDENTIFYING MARK OF THE LABEL MANUFACTURER MUST APPEAR IN THE UPPER RIGHT HAND CORNER AS INDICATED.

UNLESS OTHERWISE SPECIFIED, BREAK ALL SHARP EDGES .010/.020. REMOVE ALL BURRS.

TOLERANCES

.X ± .015	FRACTIONS ±1/32
.XX ± .010	RADI ±1/16
.XXX ± .005	ANGLES ±1°

MATL: NOTED			
REV:	G	CHANGE ALL "NAMEPLATE" TEXT TO "LABEL"	
60291	SCALE: -	BY: BKW	REVISED: 02/19/97
	FILE: CHB00002485	TDR: 0115147	

BALDOR ELECTRIC Co.

LABEL, CONNECTIONS AND TERMINAL MARKINGS DC

15209

REL. S. O.	FRAME	RATING	RPM	ARM. VOLTS	ARM. AMPS
	1810	5.00HP	1750	500	8.30
WINDING TYPE		S.F.	ENCL.	AMB °C/INSUL	DUTY
STRAIGHT SHUNT		1.0	TEFC	40/F	CONT
					300
POWER CODE		TYPE	WK 2 (LB-FT ²)	HOT ARM. CIR. RES.	FLD. AMPS@25 °C
D		T	.9565	3.88	.478
					HOT FIELD RES
					783

ARM. CIR. IND. (mh)	FIELD IND. (H)	COOLING AIR (CFM/IN H 20)	TURNS PER COIL SHUNT/SERIES	TEST DATE
66.4	264	-/-	3150/.00000	-

LOAD PERFORMANCE


LOAD	AMPERES	TORQUE IN LB.-FT.	OUTPUT IN HP	RPM	% EFFICIENCY
NO LOAD	.31	0	0	1763	0
1/4	2.1	3.49	1.16	1741	73.6
2/4	4.2	7.59	2.47	1713	83.2
3/4	6.2	11.6	3.74	1694	85.6
4/4	8.3	15.4	4.95	1685	86.0
O.L.	12	22.8	7.23	1662	84.6

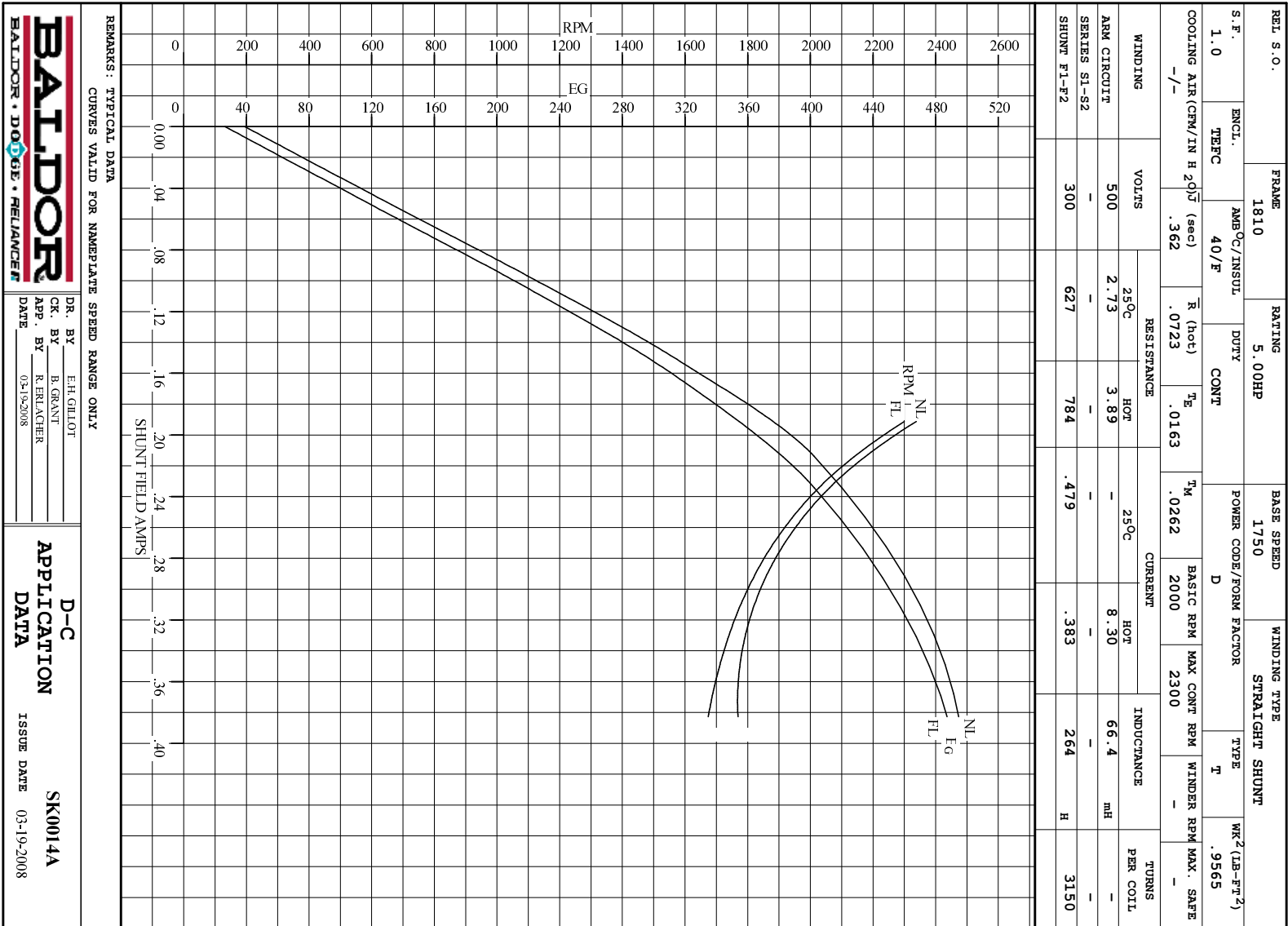
RPM VS. FIELD AMPS

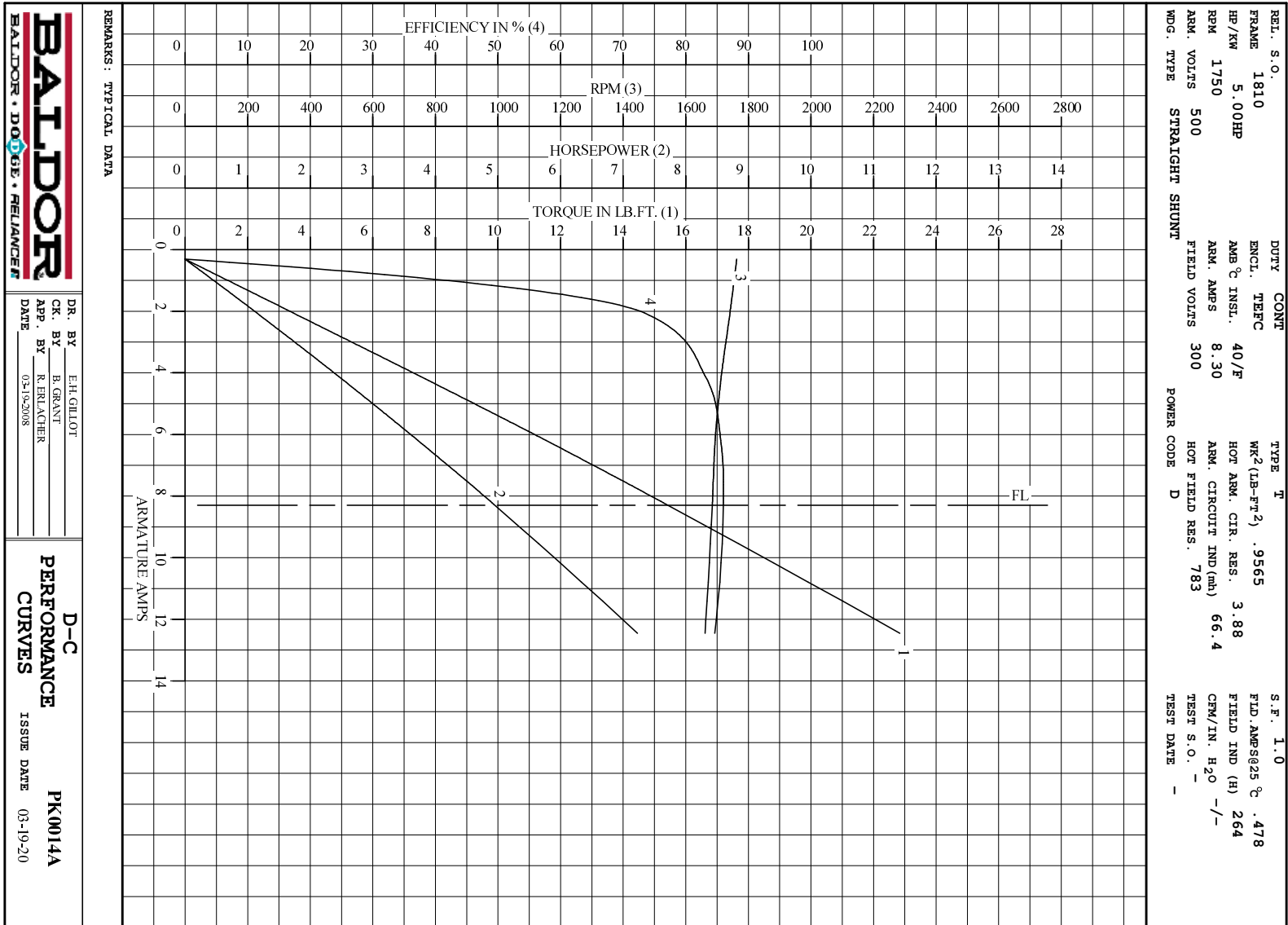
Eg VS. FIELD AMPS

FIELD AMPS	RPM N.L.	RPM F.L.	Eg N.L. @ BASE SPEED	Eg F.L. @ BASE SPEED
.382	1762	1684	494	487
.334	1785	1732	486	470
.287	1870	1833	465	445
.239	2038	2004	428	407
.191	2337	2300	374	354

REMARKS: TYPICAL DATA

	DR. BY E. H. GILLOT	D-C MOTOR PERFORMANCE DATA DK0014A ISSUE DATE 03-19-2008
	CK. BY B. GRANT APP. BY R. ERLACHER DATE 03-19-2008	





BALDOR
BALDOR • DOUG • RELIANCE

DR. BY E.H.GILLOT
 CK. BY B.GRANT
 APP. BY R.RELIANCHER
 DATE 03-19-2008

D-C
PERFORMANCE
CURVES
 ISSUE DATE 03-19-20
PK0014A