

BALDOR® • *RELIANCE*

Product Information Packet

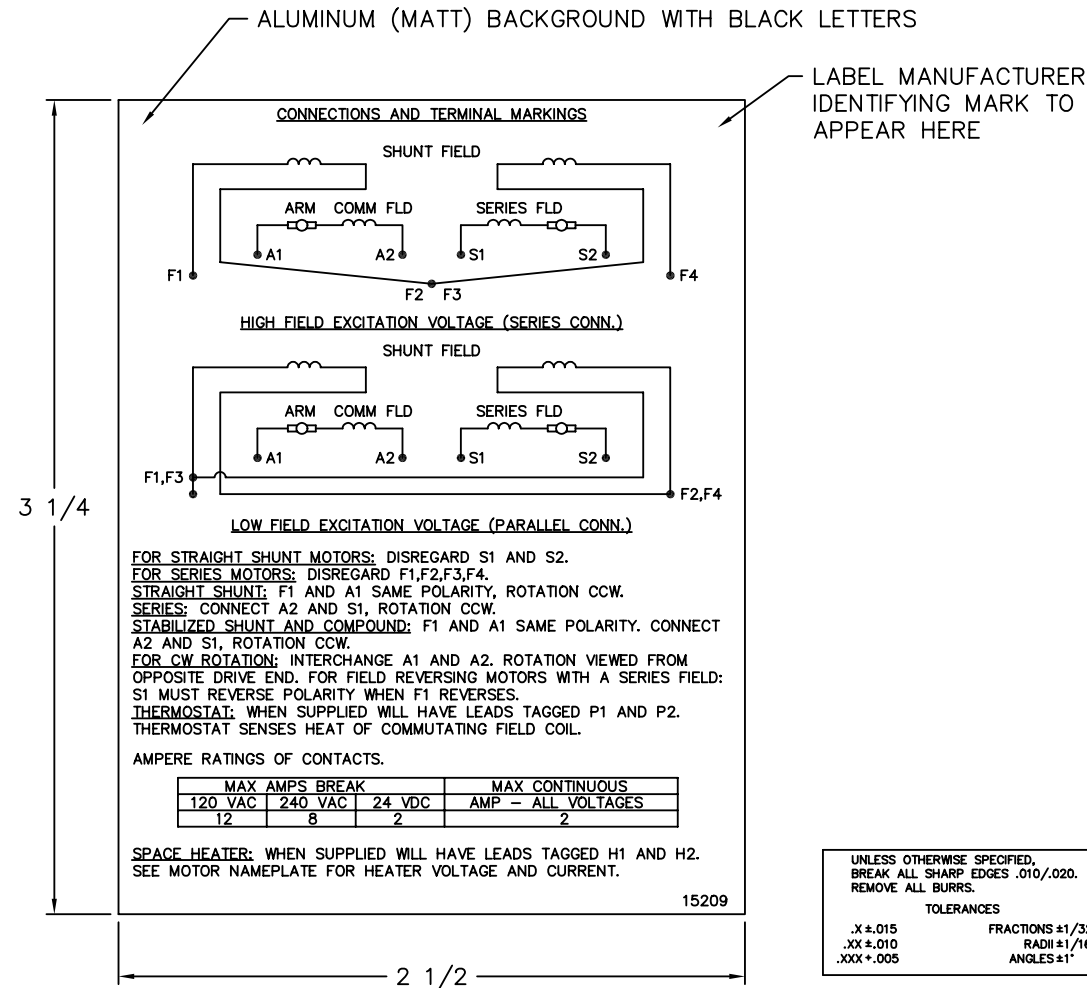
D5507P

7.5HP,1750/2300RPM,DC,2110AT,TEFC,F1

Copyright © All product information within this document is subject to Baldor Electric Company copyright © protection, unless otherwise noted.

Part Detail			
Type:	DC	Prod. Type:	T
Power Code:	D	Weight:	310
Frame Group:	2110AT	Mounting Pos.:	F1
HP:	7.5	Enclosure:	TEFC
RPM:	1750/2300	Wound:	STR. SHUNT
Service Factor:	1.0	Arm V:	500
Arm A:	12.30	Field V:	300
Field A:	1.52	Field A Hot:	1.05-1.16/1.26-
Insulation Class:	F	Ambient:	40
Duty:	CONT	DE Bearing:	6207
ODE Bearing:	6207	Brushes:	150986-21-2
Brush Qty.:			

15209



NOTE:
 MATERIAL .005 MINIMUM FULL HARD ALUMINUM DULL FINISH.
 TEMP. RANGE -20°C TO +125°C MAXIMUM.
 FOR INDOOR AND OUTDOOR MOUNTING BACK.
 METAL, PRESSURE SENSITIVE BACK. MUST MEET CSA STANDARD.
 THE CSA IDENTIFYING MARK OF THE LABEL MANUFACTURER MUST APPEAR IN THE UPPER RIGHT HAND CORNER AS INDICATED.

MATL: NOTED			
REV:	G	CHANGE ALL "NAMEPLATE" TEXT TO "LABEL"	
60291	SCALE: -	BY: BKW	REVISED: 02/19/97
	FILE: CHB00002485	TDR: 0115147	

BALDOR ELECTRIC Co.

LABEL, CONNECTIONS AND TERMINAL MARKINGS DC

15209


REL. S.O.	FRAME	RATING	RPM	ARM. VOLTS	ARM. AMPS
	2110AT	7.50HP	1750	500	12.3
WINDING TYPE		S.F.	ENCL.	AMB °C/INSUL	DUTY
STRAIGHT SHUNT		1.0	TEFC	40/F	CONT
					300
POWER CODE	TYPE	WK 2 (LB-FT 2)	HOT ARM. CIR. RES.	FLD. AMPS@25 °C	HOT FIELD RES
D	T	1.366	1.99	1.51	285

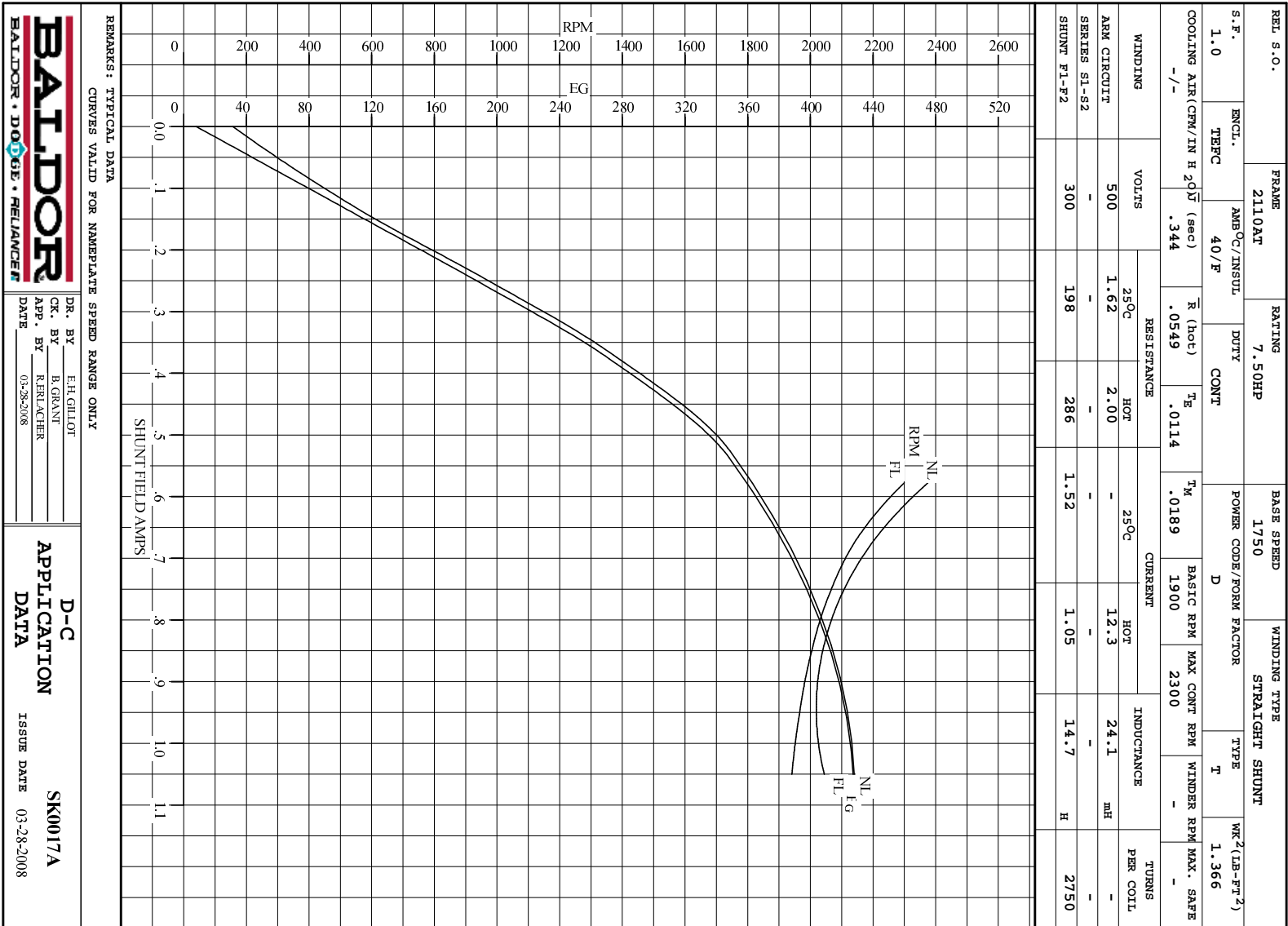
ARM. CIR. IND. (mh)	FIELD IND. (H)	COOLING AIR (CFM/IN H 20)	TURNS PER COIL SHUNT/SERIES	TEST DATE
24.1	14.6	-/-	2750/.00000	-

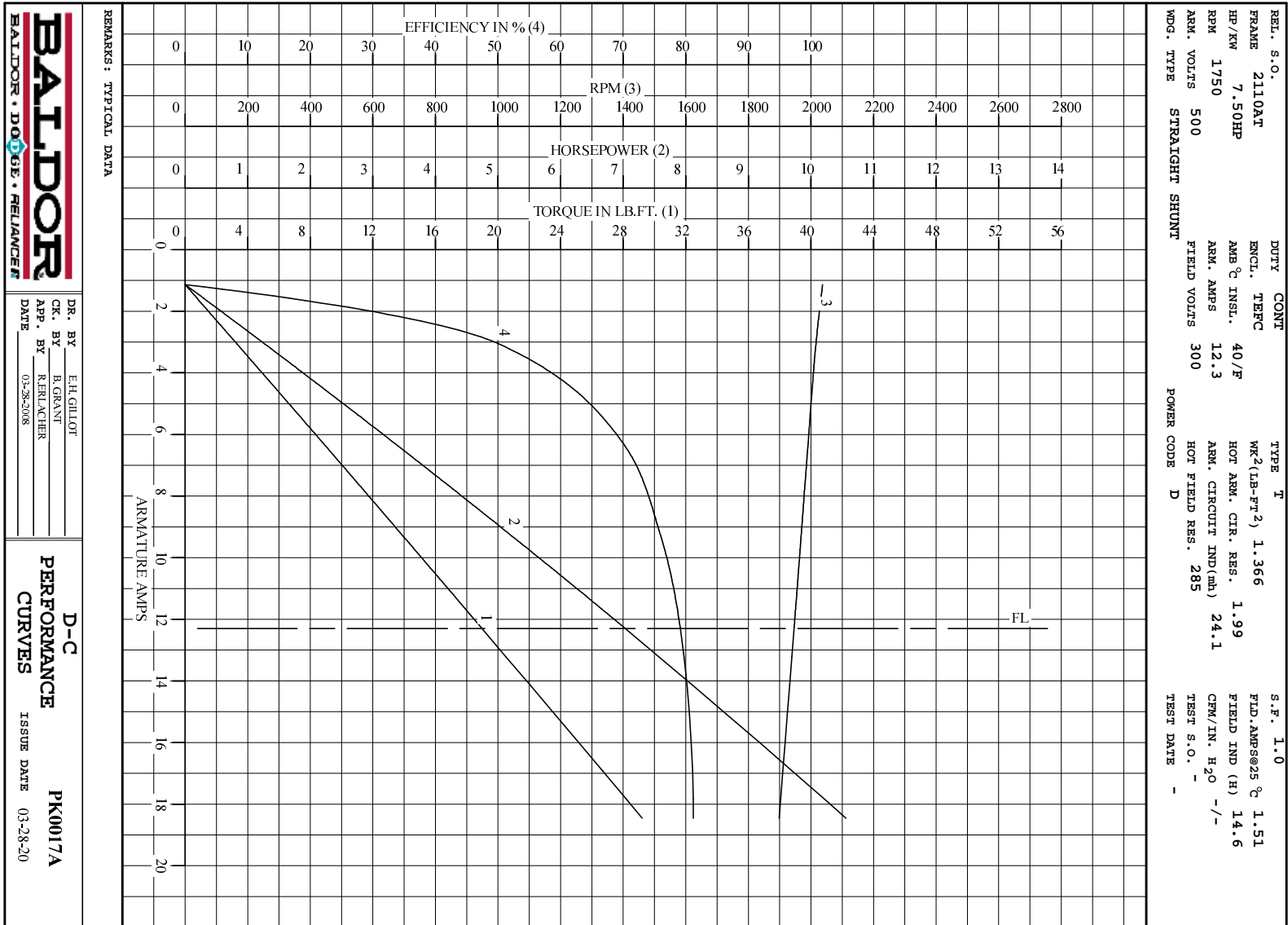
LOAD PERFORMANCE					
LOAD	AMPERES	TORQUE IN LB.-FT.	OUTPUT IN HP	RPM	% EFFICIENCY
NO LOAD	1.1	0	0	2037	0
1/4	3.1	3.34	1.28	2016	50.3
2/4	6.2	8.60	3.26	1992	69.5
3/4	9.2	13.8	5.18	1969	75.9
4/4	12	19.0	7.03	1946	79.1
O.L.	18	29.2	10.6	1898	81.2

RPM VS. FIELD AMPS			Eg VS. FIELD AMPS	
FIELD AMPS	RPM N.L.	RPM F.L.	Eg N.L. @ BASE SPEED	Eg F.L. @ BASE SPEED
1.05	2037	1946	427	427
.932	2020	1971	422	420
.814	2057	2023	412	409
.695	2169	2117	395	391
.577	2375	2300	366	361

REMARKS: TYPICAL DATA

	DR. BY E. H. GILLOT	D-C MOTOR PERFORMANCE DATA DK0017A ISSUE DATE 03-28-2008
	CK. BY B. GRANT APP. BY R. RELANCHER DATE 03-28-2008	





DR. BY E.H.GILLOT
 CK. BY B.GRAVANT
 APP. BY R.FERLACHER
 DATE 03-28-2008

D-C
PERFORMANCE
CURVES ISSUE DATE 03-28-20
PK0017A