

BALDOR® • RELIANCE

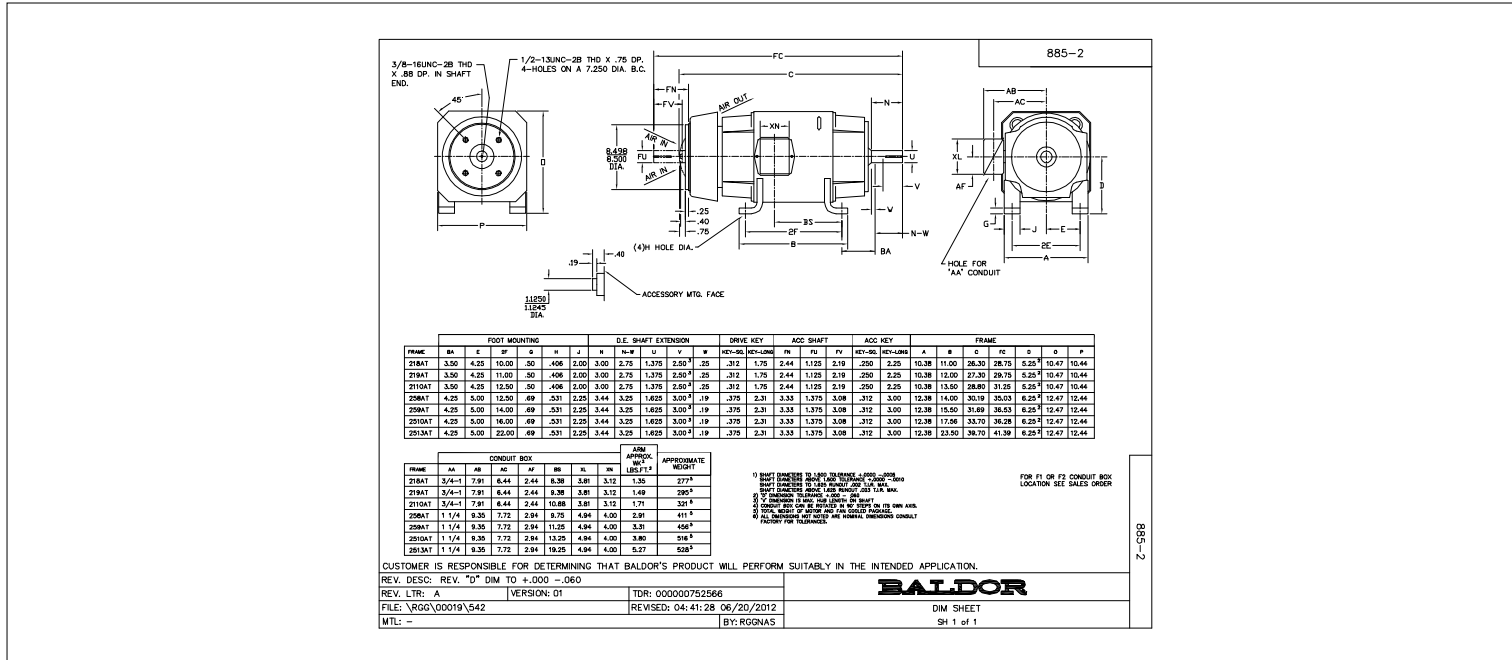
Product Information Packet

D5510P

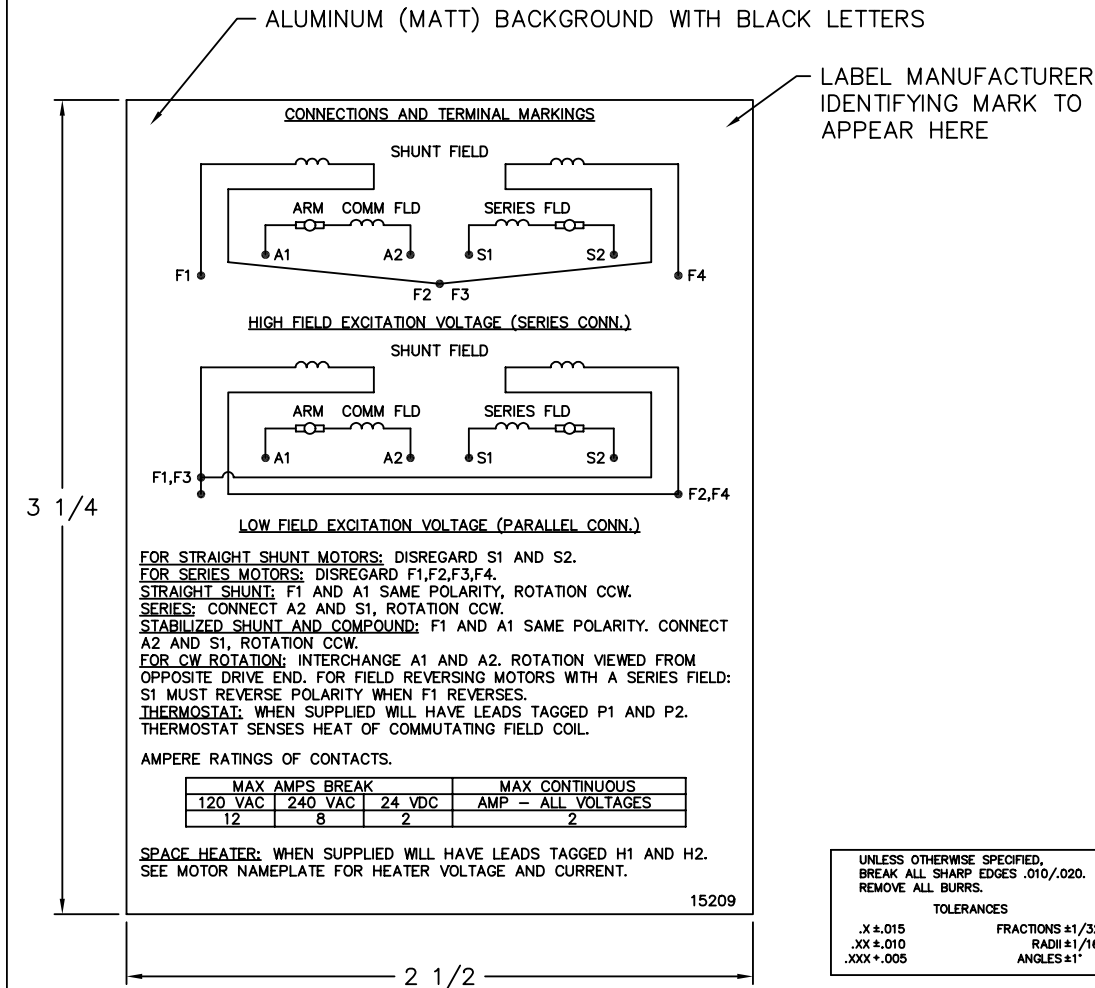
10HP, 1750/2300RPM, DC, 259AT, TEFC, F1

Copyright © All product information within this document is subject to Baldor Electric Company copyright © protection, unless otherwise noted.

Part Detail			
Type:	DC	Prod. Type:	TR
Power Code:	D	Weight:	250
Frame Group:	259AT	Mounting Pos.:	F1
HP:	10	Enclosure:	TEFC
RPM:	1750/2300	Wound:	STR. SHUNT
Service Factor:	1.0	Arm V:	500
Arm A:	16.30	Field V:	300
Field A:	1.21	Field A Hot:	.87-.98/1.26-.4
Insulation Class:	F	Ambient:	40
Duty:	CONT	DE Bearing:	6209
ODE Bearing:	6207	Brushes:	150986-25-1
Brush Qty.:			



15209



NOTE:
 MATERIAL .005 MINIMUM FULL HARD ALUMINUM DULL FINISH.
 TEMP. RANGE -20°C TO +125°C MAXIMUM.
 FOR INDOOR AND OUTDOOR MOUNTING BACK.
 METAL, PRESSURE SENSITIVE BACK. MUST MEET CSA STANDARD.
 THE CSA IDENTIFYING MARK OF THE LABEL MANUFACTURER MUST APPEAR IN THE UPPER RIGHT HAND CORNER AS INDICATED.

MATL: NOTED			
REV:	G	CHANGE ALL "NAMEPLATE" TEXT TO "LABEL"	
60291	SCALE: -	BY: BKW	REVISED: 02/19/97
	FILE: CHB00002485	TDR: 0115147	

BALDOR ELECTRIC Co.

LABEL, CONNECTIONS AND TERMINAL MARKINGS DC

15209


REL S.O.	FRAME	RATING	RPM	ARM. VOLTS	ARM. AMPS
	259	10.0HP	1750	500	16.3
WINDING TYPE		S.F.	ENCL.	AMB °C/INSUL	DUTY
STRAIGHT SHUNT		1.0	TEFC	40/F	CONT
					300
POWER CODE	TYPE	WK ² (LB-FT ²)	HOT ARM.CIR.RES.	FLD. AMPS@25 °C	HOT FIELD RES
D	TR	2.686	1.48	1.21	345

ARM. CIR. IND. (mh)	FIELD IND. (H)	COOLING AIR(CFM/IN H 20)	TURNS PER COIL SHUNT/SERIES	TEST DATE
20.2	139	-/-	3150/.00000	-

LOAD PERFORMANCE					
LOAD	AMPERES	TORQUE IN LB.-FT.	OUTPUT IN HP	RPM	% EFFICIENCY
NO LOAD	1.4	0	0	1797	0
1/4	4.1	5.12	1.74	1782	55.1
2/4	8.2	13.0	4.36	1767	73.0
3/4	12	20.7	6.90	1753	78.8
4/4	16	28.3	9.36	1740	81.6
O.L.	24	43.3	14.1	1705	83.0

RPM VS. FIELD AMPS			Eg VS. FIELD AMPS	
FIELD AMPS	RPM N.L.	RPM F.L.	Eg N.L. @ BASE SPEED	Eg F.L. @ BASE SPEED
.867	1796	1740	485	479
.773	1856	1801	469	460
.678	1954	1905	445	435
.583	2109	2063	414	402
.489	2347	2300	373	360

REMARKS: TYPICAL DATA

	DR. BY E. H. GILLOT	D-C MOTOR PERFORMANCE DATA DK0040A ISSUE DATE 10-10-2008
	CK. BY B. GRANT APP. BY R. RELANCHER DATE 10-10-2008	

