

BALDOR® • RELIANCE

Product Information Packet

D5515P

15HP, 1750/2300RPM, DC, 288AT, TEFC, F1

Copyright © All product information within this document is subject to Baldor Electric Company copyright © protection, unless otherwise noted.

Part Detail			
Type:	DC	Prod. Type:	TR
Power Code:	D	Weight:	630
Frame Group:	0288AT	Mounting Pos.:	F1
HP:	15	Enclosure:	TEFC
RPM:	1750/2300	Wound:	STR. SHUNT
Service Factor:	1.0	Arm V:	500
Arm A:	24.50	Field V:	300
Field A:	1.53	Field A Hot:	.99-1.28/.98-.6
Insulation Class:	F	Ambient:	40
Duty:	CONT	DE Bearing:	6210
ODE Bearing:	6209	Brushes:	28610-2
Brush Qty.:			

885-3

3/8-16UNC-2B THD X .88 DP. IN SHAFT ENG.
 1/2-13UNC-2B THD X .75 DP. 4-HOLES ON A 7.250 DIA. B.C.
 11.920 DIA.
 11.925 DIA.
 ACCESSORY MTD. FADE

FRAME	FOOT MOUNTING				D.E. SHAFT EXTENSION				DRIVE KEY				ACC. SHAFT EXTENSION				FRAME								
	BA	E	FP	H	J	N	N-W	V	W	KEY-90	KEY-100	FN	FV	KEY-90	KEY-100	X	B	FC	Q	U	P				
287AT	4.75	5.50	12.50	69	531	2.50	3.91	3.75	1.875	3.50 ¹	18	.500	2.50	3.44	1.625	3.19	.375	2.44	13.81	14.13	34.09	37.08	7.00 ⁴	13.88	13.75
288AT	4.75	5.50	14.00	69	531	2.50	3.91	3.75	1.875	3.50 ¹	18	.500	2.50	3.44	1.625	3.19	.375	2.44	13.81	14.13	36.84	38.25	7.00 ⁴	13.88	13.75
2810AT	4.75	5.50	18.00	69	531	2.50	3.91	3.75	1.875	3.50 ¹	18	.500	2.50	3.44	1.625	3.19	.375	2.44	13.81	14.13	39.84	42.84	7.00 ⁴	13.88	13.75
2811AT	4.75	5.50	20.00	69	531	2.50	3.91	3.75	1.875	3.50 ¹	18	.500	2.50	3.44	1.625	3.19	.375	2.44	13.81	14.13	43.84	46.83	7.00 ⁴	13.88	13.75
2813AT	4.75	5.50	23.00	69	531	2.50	3.91	3.75	1.875	3.50 ¹	18	.500	2.50	3.44	1.625	3.19	.375	2.44	13.81	14.13	47.84	49.12	7.00 ⁴	13.88	13.75

FRAME	CONDUIT BOX				APPROX. HEIGHT	APPROXIMATE HEIGHT			
	BA	E	FP	H					
287AT	1 1/4	11.88	9.25	5.00	10.69	7.88	5.25	4.47	506 ⁵
288AT	1 1/4	11.88	9.25	5.00	12.64	7.88	5.25	6.38	616 ⁵
2810AT	1 1/4	11.88	9.25	5.00	16.04	7.88	5.25	8.80	776 ⁵
2811AT	1 1/4	11.88	9.25	5.00	19.14	7.88	5.25	12.2	785 ⁵
2813AT	1 1/4	11.88	9.25	5.00	23.44	7.88	5.25	9.40	792 ⁵

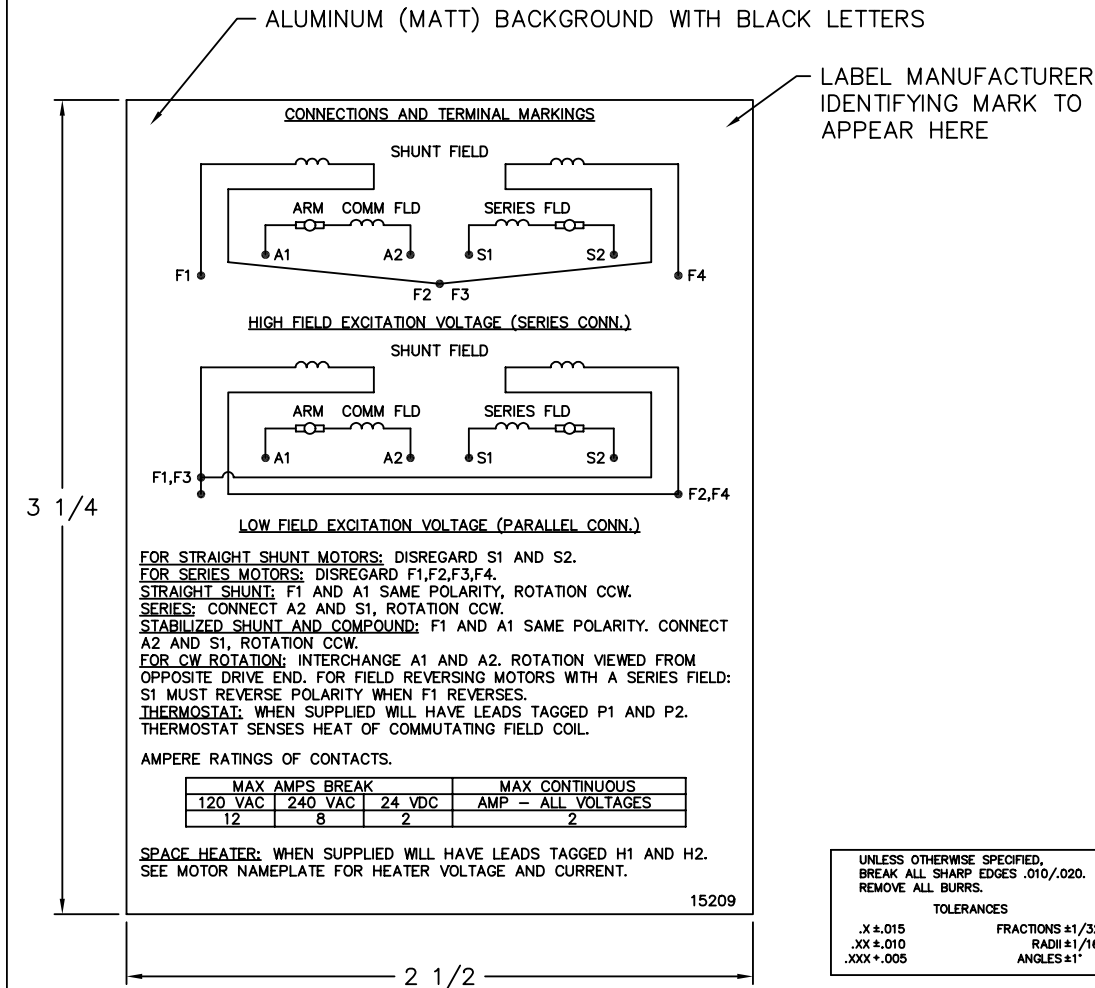
1) SHAFT DIAMETERS TO 1.500 TOLERANCE +.0000 -.0005
 2) SHAFT DIAMETERS ABOVE 1.500 TOLERANCE +.0000 -.0010
 3) SHAFT DIAMETERS TO 1.625 RUNOUT .003 T.I.R. MAX.
 4) SHAFT DIAMETERS ABOVE 1.625 RUNOUT .003 T.I.R. MAX.
 5) SHAFT DIAMETERS TOLERANCE .002 ±.000
 6) CONDUIT BOX CAN BE ROTATED IN 90° STEPS ON ITS OWN AXIS.
 7) DIMENSION Q MAX. HUB LENGTH ON SHAFT
 8) TOTAL HEIGHT OF MOTOR AND FAN COOLED PACKAGE.
 9) ALL DIMENSIONS NOT NOTED ARE NOMINAL DIMENSIONS CONSULT FACTORY FOR TOLERANCES.

FOR F1 OR F2 CONDUIT BOX LOCATION SEE SALES ORDER

CUSTOMER IS RESPONSIBLE FOR DETERMINING THAT BALDOR'S PRODUCT WILL PERFORM SUITABLY IN THE INTENDED APPLICATION.

REV. DESG: REV. "D" DIM TO +.000 -.060	TDR: 00000752566	BALDOR
REV. LTR: B	VERSION: 01	DIM SHEET
FILE: \RGG\00019\543	REVISED: 04:53:23 06/20/2012	91 1 of 1
MTL: --	BY: ROGNAS	

15209



NOTE:
 MATERIAL .005 MINIMUM FULL HARD ALUMINUM DULL FINISH.
 TEMP. RANGE -20°C TO +125°C MAXIMUM.
 FOR INDOOR AND OUTDOOR MOUNTING BACK.
 METAL, PRESSURE SENSITIVE BACK. MUST MEET CSA STANDARD.
 THE CSA IDENTIFYING MARK OF THE LABEL MANUFACTURER MUST APPEAR IN THE UPPER RIGHT HAND CORNER AS INDICATED.

MATL: NOTED			
REV:	G	CHANGE ALL "NAMEPLATE" TEXT TO "LABEL"	
60291	SCALE: -	BY: BKW	REVISED: 02/19/97
	FILE: CHB00002485	TDR: 0115147	

BALDOR ELECTRIC Co.

LABEL, CONNECTIONS AND TERMINAL MARKINGS DC

15209


REL. S. O.	FRAME	RATING	RPM	ARM. VOLTS	ARM. AMPS
	288	15.0HP	1750	500	24.5
WINDING TYPE		S.F.	ENCL.	AMB °C/INSUL	DUTY
STRAIGHT SHUNT		1.0	TEFC	40/F	CONT
					300
POWER CODE	TYPE	WK 2 (LB-FT ²)	HOT ARM. CIR. RES.	FLD. AMPS@25 °C	HOT FIELD RES
D	TR	4.420	1.06	1.52	302

ARM. CIR. IND. (mh)	FIELD IND. (H)	COOLING AIR (CFM/IN H 20)	TURNS PER COIL SHUNT/SERIES	TEST DATE
18.5	155	-/-	3150/.00000	-

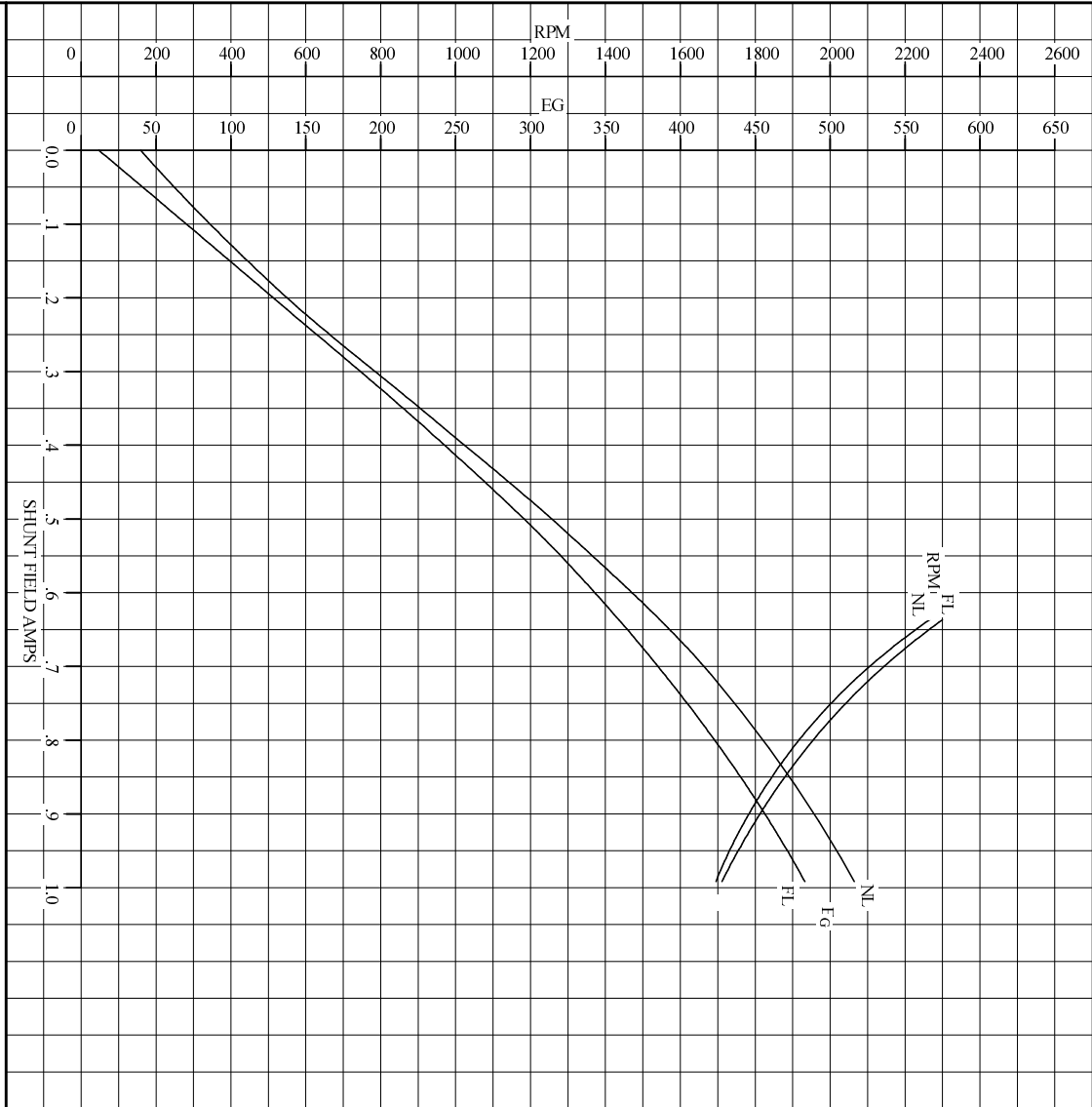
LOAD PERFORMANCE					
LOAD	AMPERES	TORQUE IN LB.-FT.	OUTPUT IN HP	RPM	% EFFICIENCY
NO LOAD	1.1	0	0	1690	0
1/4	6.1	10.3	3.28	1678	71.4
2/4	12	22.5	7.19	1681	81.7
3/4	18	34.1	11.0	1692	85.1
4/4	25	44.9	14.6	1710	86.0
O.L.	37	64.4	21.5	1754	85.3

RPM VS. FIELD AMPS		Eg VS. FIELD AMPS	
FIELD AMPS	RPM N.L.	RPM F.L.	Eg N.L. @ BASE SPEED
.991	1689	1709	516
.902	1779	1809	491
.814	1895	1932	462
.725	2051	2090	426
.636	2265	2300	385

REMARKS: TYPICAL DATA

	DR. BY E. H. GILLOT	D-C MOTOR PERFORMANCE DATA DK0077A ISSUE DATE 05-07-2009
	CK. BY R. BRANCHER APP. BY R. BRANCHER DATE 05-07-2009	

REL. S.O.	FRAME	288	RATING	15.0HP	BASE SPEED	1750	WINDING TYPE	STRAIGHT SHUNT
S.F. 1.0	ENCL. TEFC	AMB°C/INSUL 40/F	DUTY CONT		POWER CODE/FORM FACTOR	D	TYPE	TR
COOLING AIR (CFM/IN H ² O) 20		R (hot) .0585	T _e .0164	T _m .0326	BASIC RPM 1950	MAX CONT RPM 2300	WINDER RPM	MAX. SAFE
WINDING	VOLTS	RESISTANCE		CURRENT		INDUCTANCE		TURNS PER COIL
ARM CIRCUIT	500	25°C .815	HOT 1.07	25°C	HOT	18.6	mH	-
SERIES S1-S2	-	-	-	-	-	-	-	-
SHUNT F1-F2	300	1.97	303	1.53	.992	1.56	H	3150



REMARKS: TYPICAL DATA
CURVES VALID FOR NAMEPLATE SPEED RANGE ONLY

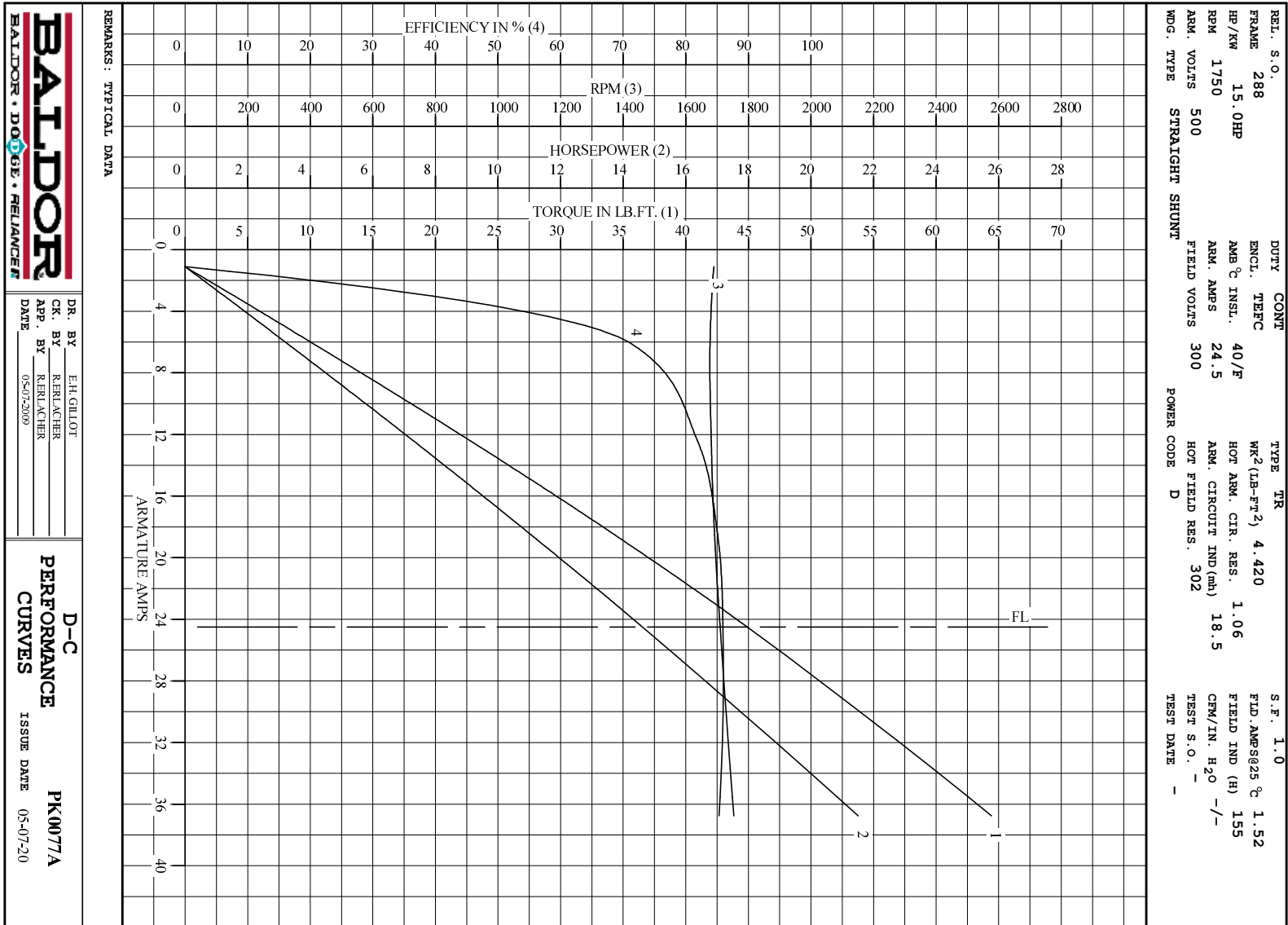
BALDOR • DOOR • RELIANCE

BALDOR

DR. BY E.H.GILLOT
 CK. BY R.R.LACHER
 APP. BY R.R.LACHER
 DATE 05-07-2009

D-C APPLICATION DATA

SK0077A
 ISSUE DATE 05-07-2009



BALDOR
BALDOR • DOUG • RELIANCE

DR. BY E.H.GILLOT
 CK. BY RERLACHER
 APP. BY RERLACHER
 DATE 05-07-2009

D-C
PERFORMANCE
CURVES ISSUE DATE 05-07-20
PK0077A