

BALDOR® • RELIANCE

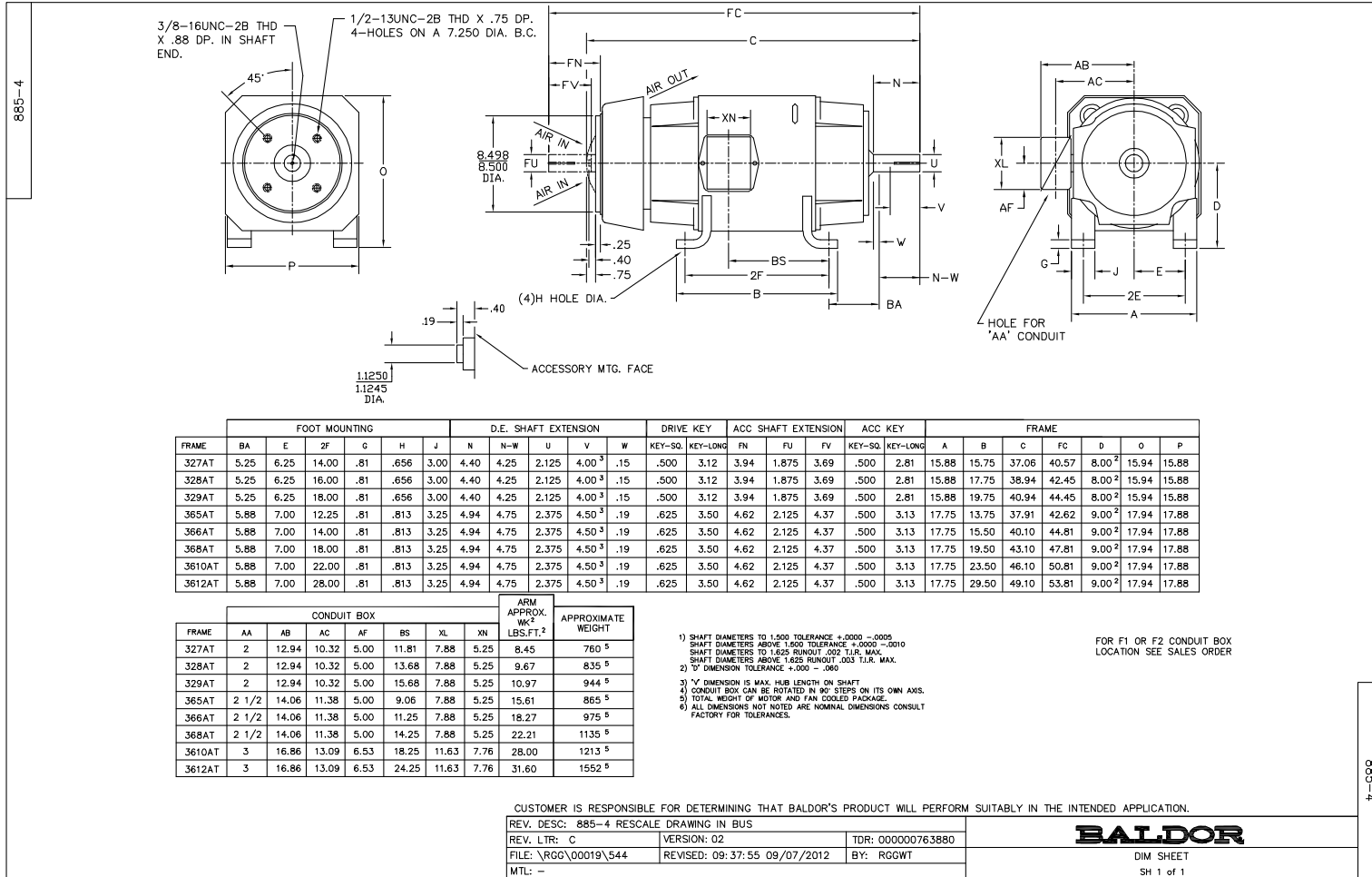
Product Information Packet

D5525P

25HP, 1750/2300RPM, DC, 328AT, TEFC, F1

Copyright © All product information within this document is subject to Baldor Electric Company copyright © protection, unless otherwise noted.

Part Detail			
Type:	DC	Prod. Type:	T
Power Code:	D	Weight:	875
Frame Group:	0328AT	Mounting Pos.:	F1
HP:	25	Enclosure:	TEFC
RPM:	1750/2300	Wound:	STR. SHUNT
Service Factor:	1.0	Arm V:	500
Arm A:	40.90	Field V:	300/ 300
Field A:	1.76/1.76	Field A Hot:	1.11-1.30/1.11-
Insulation Class:	F	Ambient:	40
Duty:	CONT	DE Bearing:	6211
ODE Bearing:	6210	Brushes:	28610-2
Brush Qty.:			



FRAME	FOOT MOUNTING				D.E. SHAFT EXTENSION							DRIVE KEY			ACC SHAFT EXTENSION			ACC KEY			FRAME					
	BA	E	2F	G	H	J	N	N-W	U	V	W	KEY-SQ.	KEY-LONG	FN	FU	FV	KEY-SQ.	KEY-LONG	A	B	C	FC	D	O	P	
327AT	5.25	6.25	14.00	.81	.656	3.00	4.40	4.25	2.125	4.00 ³	.15	.500	3.12	3.94	1.875	3.69	.500	2.81	15.88	15.75	37.06	40.57	8.00 ²	15.94	15.88	
328AT	5.25	6.25	16.00	.81	.656	3.00	4.40	4.25	2.125	4.00 ³	.15	.500	3.12	3.94	1.875	3.69	.500	2.81	15.88	17.75	38.94	42.45	8.00 ²	15.94	15.88	
329AT	5.25	6.25	18.00	.81	.656	3.00	4.40	4.25	2.125	4.00 ³	.15	.500	3.12	3.94	1.875	3.69	.500	2.81	15.88	19.75	40.94	44.45	8.00 ²	15.94	15.88	
365AT	5.88	7.00	12.25	.81	.813	3.25	4.94	4.75	2.375	4.50 ³	.19	.625	3.50	4.62	2.125	4.37	.500	3.13	17.75	13.75	37.91	42.62	9.00 ²	17.94	17.88	
366AT	5.88	7.00	14.00	.81	.813	3.25	4.94	4.75	2.375	4.50 ³	.19	.625	3.50	4.62	2.125	4.37	.500	3.13	17.75	15.50	40.10	44.81	9.00 ²	17.94	17.88	
368AT	5.88	7.00	18.00	.81	.813	3.25	4.94	4.75	2.375	4.50 ³	.19	.625	3.50	4.62	2.125	4.37	.500	3.13	17.75	19.50	43.10	47.81	9.00 ²	17.94	17.88	
3610AT	5.88	7.00	22.00	.81	.813	3.25	4.94	4.75	2.375	4.50 ³	.19	.625	3.50	4.62	2.125	4.37	.500	3.13	17.75	23.50	46.10	50.81	9.00 ²	17.94	17.88	
3612AT	5.88	7.00	28.00	.81	.813	3.25	4.94	4.75	2.375	4.50 ³	.19	.625	3.50	4.62	2.125	4.37	.500	3.13	17.75	29.50	49.10	53.81	9.00 ²	17.94	17.88	

FRAME	CONDUIT BOX							ARM APPROX. Wt ² LBS.FT. ²	APPROXIMATE WEIGHT
	AA	AB	AC	AF	BS	XL	XN		
327AT	2	12.94	10.32	5.00	11.81	7.88	5.25	8.45	760 ⁵
328AT	2	12.94	10.32	5.00	13.68	7.88	5.25	9.67	835 ⁵
329AT	2	12.94	10.32	5.00	15.68	7.88	5.25	10.97	944 ⁵
365AT	2 1/2	14.06	11.38	5.00	9.06	7.88	5.25	15.61	865 ⁵
366AT	2 1/2	14.06	11.38	5.00	11.25	7.88	5.25	18.27	975 ⁵
368AT	2 1/2	14.06	11.38	5.00	14.25	7.88	5.25	22.21	1135 ⁵
3610AT	3	16.86	13.09	6.53	18.25	11.63	7.76	28.00	1213 ⁵
3612AT	3	16.86	13.09	6.53	24.25	11.63	7.76	31.60	1552 ⁵

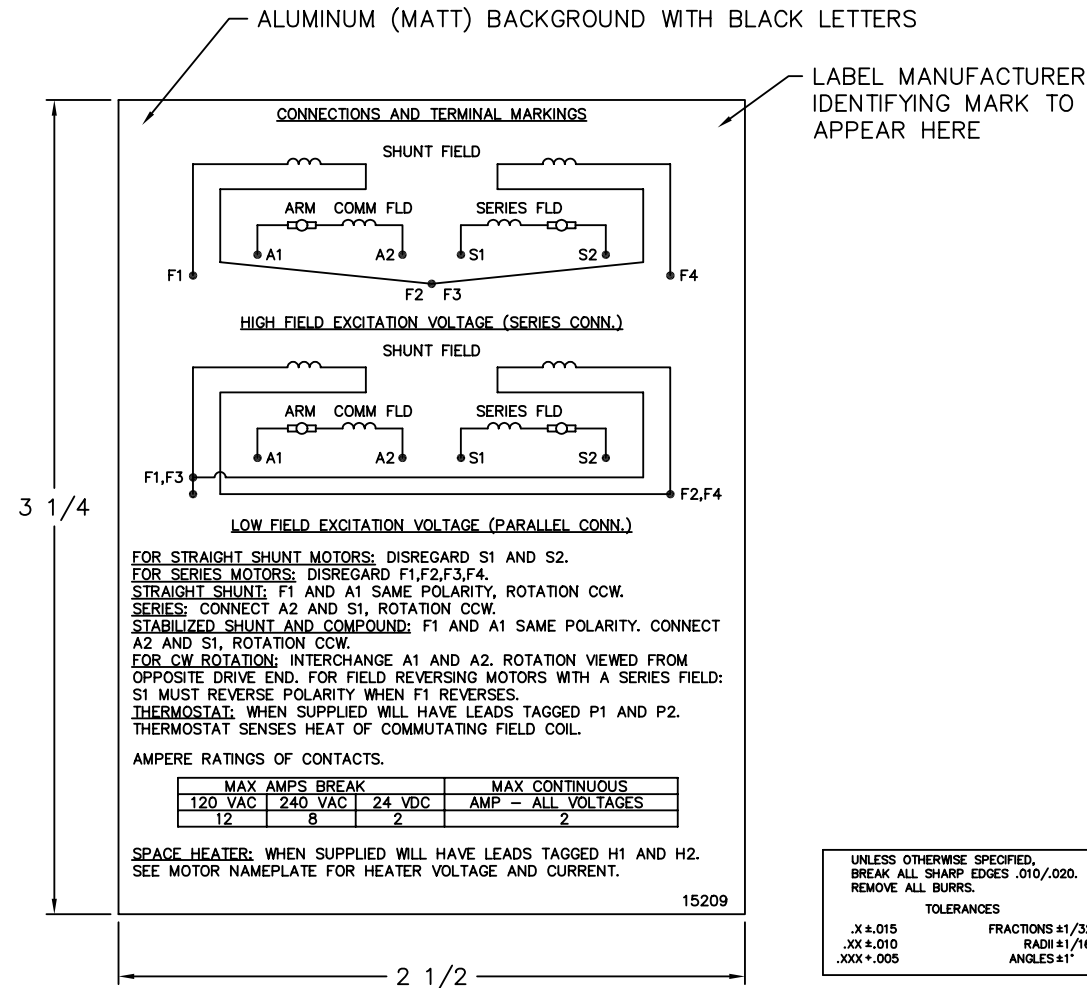
- 1) SHAFT DIAMETERS TO 1.500 TOLERANCE +.0000 - .0005
- SHAFT DIAMETERS ABOVE 1.500 TOLERANCE +.0000 - .0010
- SHAFT DIAMETERS TO 1.625 RUNOUT .002 T.I.R. MAX.
- SHAFT DIAMETERS ABOVE 1.625 RUNOUT .003 T.I.R. MAX.
- 2) 'V' DIMENSION TOLERANCE +.000 - .000
- 3) 'V' DIMENSION IS MAX. HUB LENGTH ON SHAFT
- 4) CONDUIT BOX CAN BE ROTATED IN 90° STEPS ON ITS OWN AXIS.
- 5) TOTAL WEIGHT OF MOTOR AND FAN COOLED PACKAGE.
- 6) ALL DIMENSIONS NOT NOTED ARE NOMINAL DIMENSIONS CONSULT FACTORY FOR TOLERANCES.

FOR F1 OR F2 CONDUIT BOX LOCATION SEE SALES ORDER

CUSTOMER IS RESPONSIBLE FOR DETERMINING THAT BALDOR'S PRODUCT WILL PERFORM SUITABLY IN THE INTENDED APPLICATION.

REV. DESC: 885-4 RESCALE DRAWING IN BUS			BALDOR		
REV. LTR: C	VERSION: 02	TDR: 00000763880			
FILE: \RGG\00019\544	REVISED: 09:37:55 09/07/2012	BY: RGGWT	DIM SHEET		
MTL: -			SH 1 of 1		

15209



NOTE:
 MATERIAL .005 MINIMUM FULL HARD ALUMINUM DULL FINISH.
 TEMP. RANGE -20°C TO +125°C MAXIMUM.
 FOR INDOOR AND OUTDOOR MOUNTING BACK.
 METAL, PRESSURE SENSITIVE BACK. MUST MEET CSA STANDARD.
 THE CSA IDENTIFYING MARK OF THE LABEL MANUFACTURER MUST APPEAR IN THE UPPER RIGHT HAND CORNER AS INDICATED.

UNLESS OTHERWISE SPECIFIED, BREAK ALL SHARP EDGES .010/.020. REMOVE ALL BURRS.

TOLERANCES

.X ± .015	FRACTIONS ±1/32
.XX ± .010	RADI ±1/16
.XXX ± .005	ANGLES ±1°

MATL: NOTED			
REV:	G	CHANGE ALL "NAMEPLATE" TEXT TO "LABEL"	
60291	SCALE: -	BY: BKW	REVISED: 02/19/97
	FILE: CHB00002485	TDR: 0115147	

BALDOR ELECTRIC Co.

LABEL, CONNECTIONS AND TERMINAL MARKINGS DC

15209


REL. S. O.	FRAME	RATING	RPM	ARM. VOLTS	ARM. AMPS
	328	25.0HP	1750	500	40.9
WINDING TYPE		S.F.	ENCL.	AMB °C/INSUL	DUTY
STRAIGHT SHUNT		1.0	TEFC	40/F	CONT
					300
POWER CODE	TYPE	WK 2 (LB-FT ²)	HOT ARM. CIR. RES.	FLD. AMPS@25 °C	HOT FIELD RES
D	T	7.377	.537	1.75	269

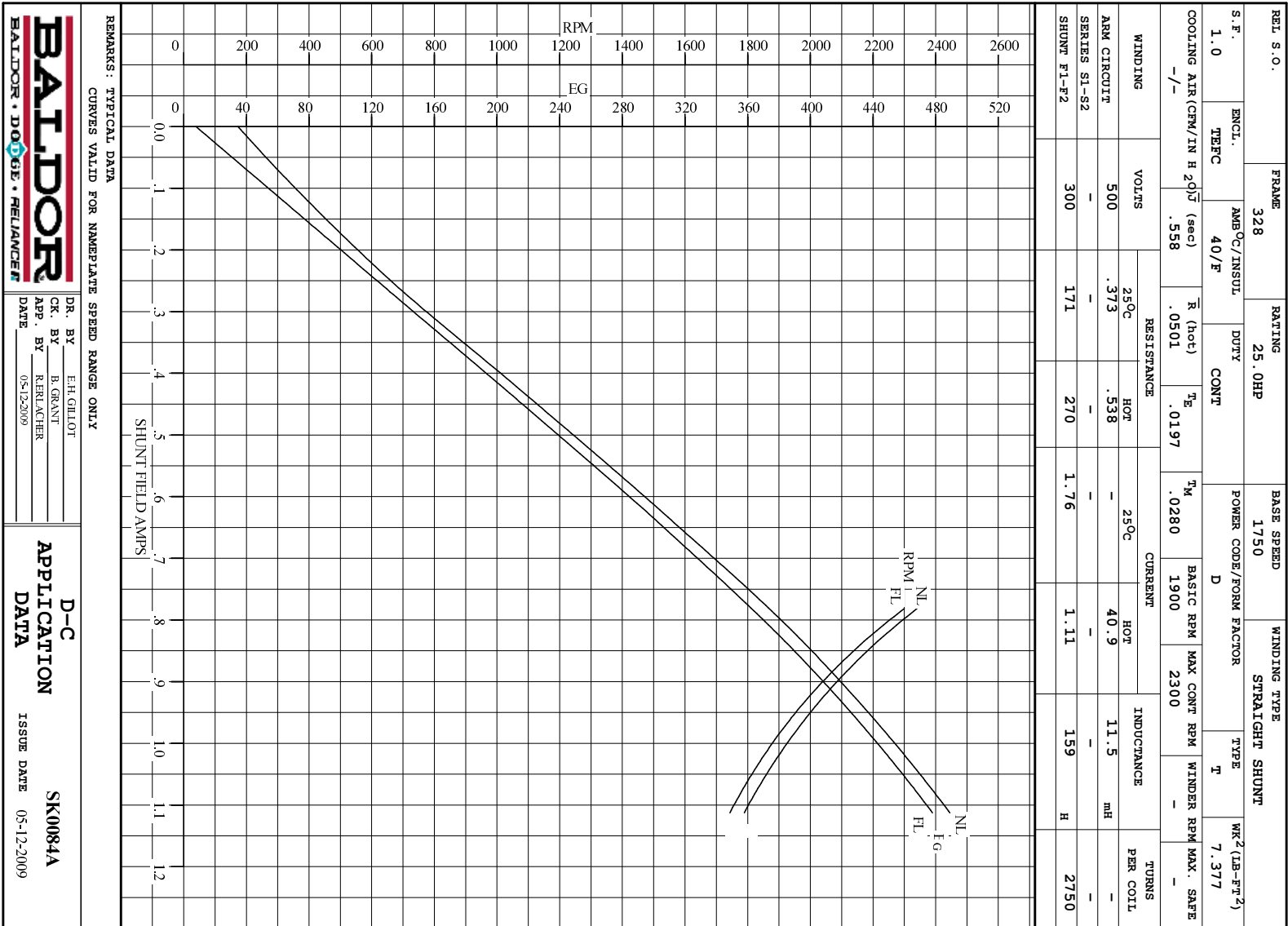
ARM. CIR. IND. (mh)	FIELD IND. (H)	COOLING AIR (CFM/IN H 20)	TURNS PER COIL SHUNT/SERIES	TEST DATE
11.5	158	-/-	2750/.00000	-

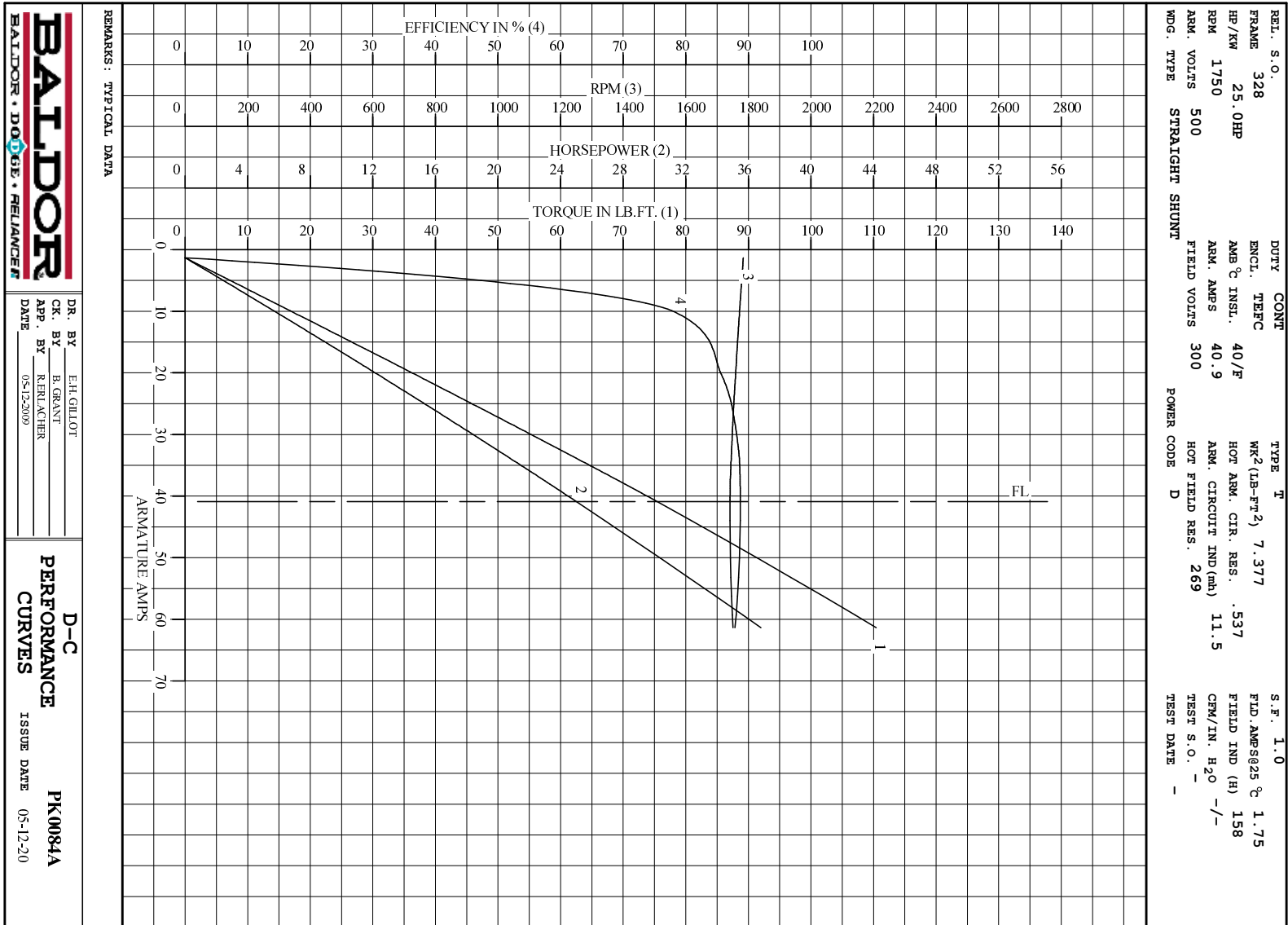
LOAD PERFORMANCE					
LOAD	AMPERES	TORQUE IN LB.-FT.	OUTPUT IN HP	RPM	% EFFICIENCY
NO LOAD	1.3	0	0	1784	0
1/4	10	17.4	5.86	1772	78.5
2/4	20	37.1	12.4	1759	85.8
3/4	31	56.5	18.8	1748	88.2
4/4	41	75.4	25.0	1741	88.7
O.L.	61	110	36.8	1751	87.9

RPM VS. FIELD AMPS		Eg VS. FIELD AMPS		
FIELD AMPS	RPM N.L.	RPM F.L.	Eg N.L. @ BASE SPEED	Eg F.L. @ BASE SPEED
1.11	1784	1741	489	477
1.02	1885	1838	464	453
.947	2004	1958	437	425
.864	2153	2108	406	395
.781	2340	2300	373	362

REMARKS: TYPICAL DATA

	DR. BY E. H. GILLOT	D-C MOTOR PERFORMANCE DATA DK0084A ISSUE DATE 05-12-2009
	CK. BY B. GRANT APP. BY R. BRANCHER DATE 05-12-2009	





DR. BY E.H.GILLOT
 CK. BY B.GRANT
 APP. BY R.R. RANCIER
 DATE 05-12-2009

D-C
PERFORMANCE
CURVES
 ISSUE DATE 05-12-20
PK0084A