

# **BALDOR**® • **RELIANCE**

## **Product Information Packet**

# **EHF3157T**

**2HP,1725RPM,3PH,60HZ,145T,3532M,OPSB,F2**

Copyright © All product information within this document is subject to Baldor Electric Company copyright © protection, unless otherwise noted.

Part Detail									
Revision:	C	Status:	PRD/A	Change #:		Proprietary:	No		
Type:	AC	Prod. Type:	3532M	Elec. Spec:	35WGT866	CD Diagram:			
Enclosure:	OPSB	Mfg Plant:		Mech. Spec:	35VV803	Layout:			
Frame:	145T	Mounting:	F2	Poles:	04	Created Date:	12-01-2011		
Base:	RG	Rotation:	R	Insulation:	B	Eff. Date:	08-28-2012		
Leads:	9#18	Literature:		Elec. Diagram:		Replaced By:			
Nameplate NP2094E06B03									
CAT.NO.	EHFM3157T								
SPEC.	35VV803T866G1								
HP	2								
VOLTS	208-230/460								
AMPS	5.7-5.4/2.7								
RPM	1725								
FRAME	145T	HZ	60	PH	3				
SER.F.	1.15	CODE	J	DES	B	CL	B		
NEMA-NOM-EFF	86.5	PF	82						
RATING	40C AMB-CONT								
CC	010A	USABLE AT 208V	5.7						
DE	6205	ODE	6203						
AUTO	N	MANUAL	N	NONE	Y				
ENCL	OPSB	SN							
BLANK									

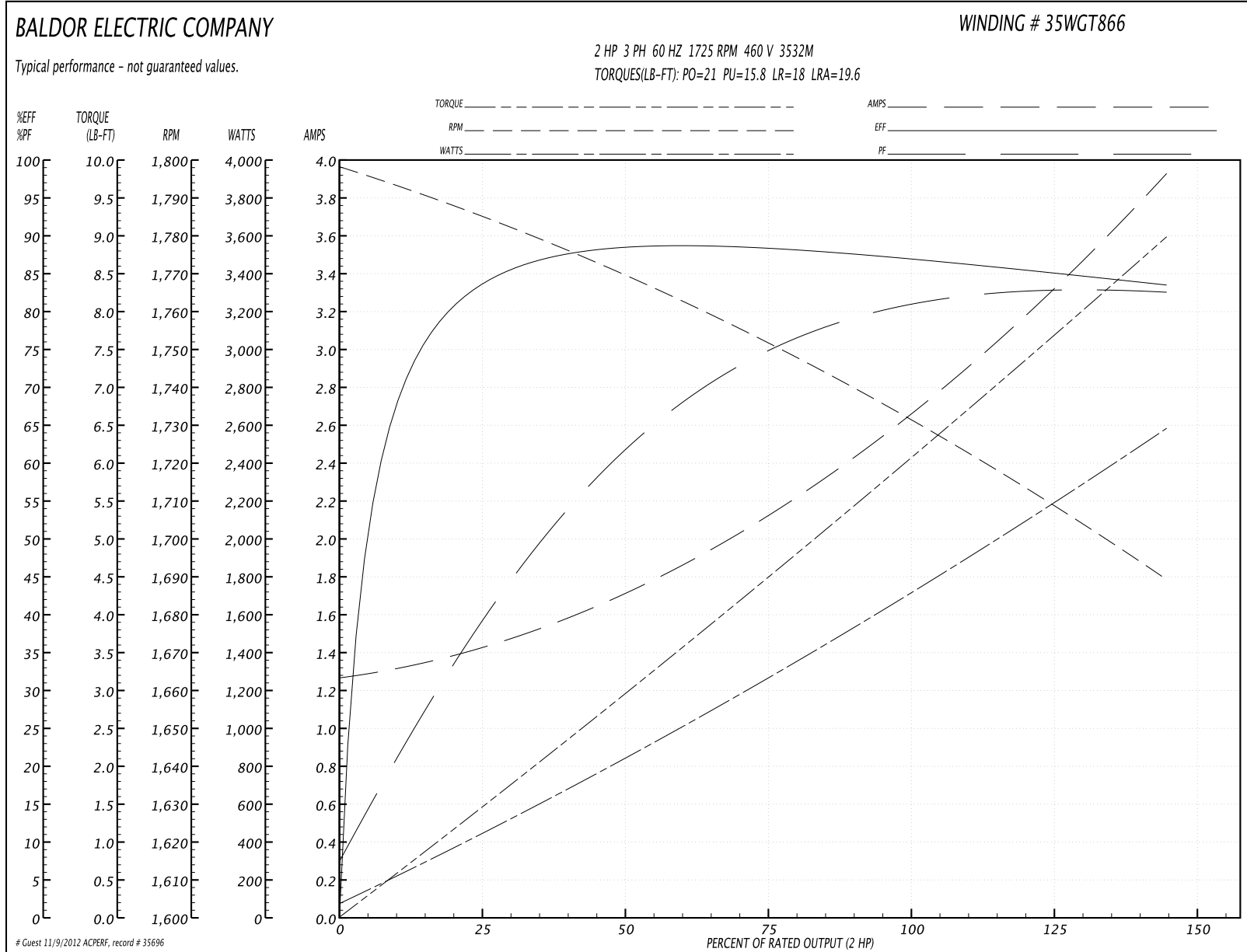
Parts List		
Part Number	Description	Quantity
SA235242	SA 35VV803T866G1	1.000 EA
RA222204	RA 35VV803T866G1	1.000 EA
S/P107-000-001	SUPER E PROC'S-FS & WS PLTS-POLYREX EM G	1.000 EA
NS2512A01	INSULATOR, CONDUIT BOX X	1.000 EA
35CB4004A17	SHEET METAL KOBX 35 (STAMPED) 35CB4004 L	1.000 EA
51XT1032A04	10-32X1/4 HX WA SL SR TYT (F/S)	4.000 EA
11XW1032G06	10-32 X .38, TAPTITE II, HEX WSHR SLTD U	1.000 EA
HW3001B01	003SS CUP WASHER, FOR #8 SCREW	1.000 EA
35EP3201A48	SPL FR ENDPLATE-OPEN W/SCREENS, GREASER	1.000 EA
HW4500A19	1/4-28X1/4 SLOTTED PLUG F/S	1.000 EA
HW4500A20	1/8NPT SL PIPE PLUG	1.000 EA
HW5100A03SP	WAVY WASHER (W1543-017)	1.000 EA
35EP3200A33	PU ENDPLATE, MACH	1.000 EA
91XN0540J08	SCREW, 5-40 X 1/2", FHC, AS	2.000 EA
HW4500A19	1/4-28X1/4 SLOTTED PLUG F/S	1.000 EA
HW4500A20	1/8NPT SL PIPE PLUG	1.000 EA
XY1032A02	10-32 HEX NUT DIRECTIONAL SERRATION	4.000 EA
35CB4509	BOX LID MODEL 35 FOR 35CB4004-GALV & PHO	1.000 EA
51XB1016A05	10-16X5/16HX WA SL SR TYB (F/S)	4.000 EA
HW2501D13SP	KEY, 3/16 SQ X 1.375	1.000 EA
HA7000A01	KEY RETAINER 7/8" DIA SHAFT	1.000 EA
MJ1000A75	GREASE, POLYREX EM EXXON	0.050 LB
MG1000G27	PAINT- S9282E CHARCOAL GREY	0.017 GA
HA3100A23	THRUBOLT 10-32 X 10.375	4.000 EA

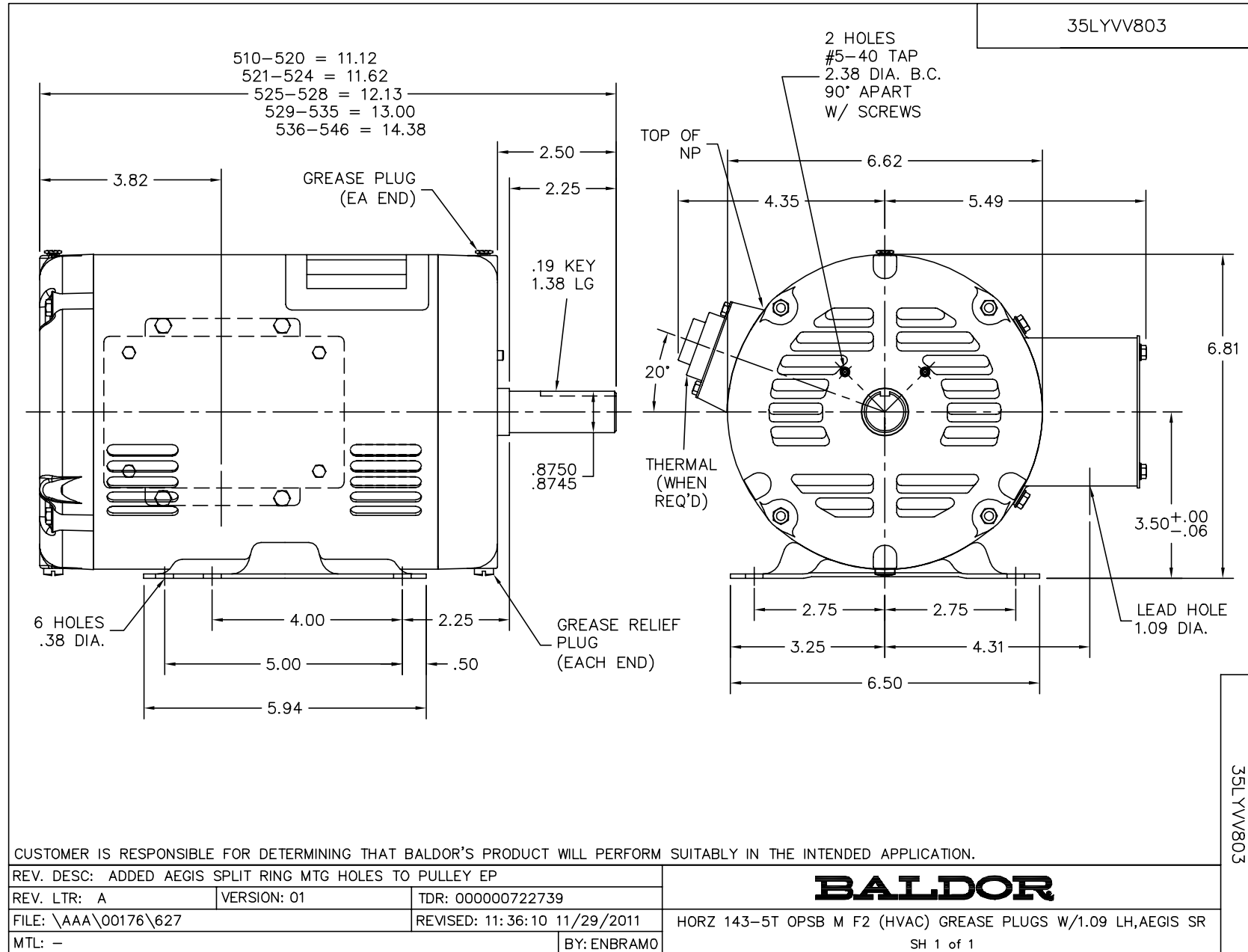
Parts List (continued)		
Part Number	Description	Quantity
35AD2005A01	BAFFLE PLATE,MOD 35-SLTD BAND MTRS TDR	2.000 EA
LB1125C02	SUPER-E (STOCK CTN LABEL SUPER-E WITH FL	1.000 EA
LB1357	ENERGY GUIDE LABEL (BOX LABEL)	1.000 SH
LC0005	CONN.DIA.,TY M,9-LD,DUAL VOLT,REVERSING	1.000 EA
NP2094E06B03	NP LABEL W/BARCODE (PREM EFF HVAC MTR)	1.000 EA
35PA1067	PACK GROUP COMBINED PRINT WITH OSB BASE	1.000 EA

**Performance Data at 460V, 60Hz, 2.0HP (Typical performance - Not guaranteed values)**

General Characteristics							
Full Load Torque:	6.0 LB-FT			Start Configuration:	DOL		
No-Load Current:	1.28 Amps			Break-Down Torque:	21.0 LB-FT		
Line-line Res. @ 25°C.:	8.16 Ohms A Ph / 0.0 Ohms B Ph			Pull-Up Torque:	15.8 LB-FT		
Temp. Rise @ Rated Load:	33 C			Locked-Rotor Torque:	18.0 LB-FT		
Temp. Rise @ S.F. Load:	41 C			Starting Current:	19.6 Amps		
Load Characteristics							
% of Rated Load	25	50	75	100	125	150	S.F.
Power Factor:	41.0	63.0	74.0	80.0	83.0	83.0	82.0
Efficiency:	83.4	87.9	88.3	87.3	85.6	83.3	86.3
Speed:	1784.0	1769.0	1751.0	1733.0	1713.0	1688.0	1721.0
Line Amperes:	1.41	1.71	2.14	2.65	3.23	3.93	3.0

Performance Graph at 460V, 60Hz, 2.0HP Typical performance - Not guaranteed values

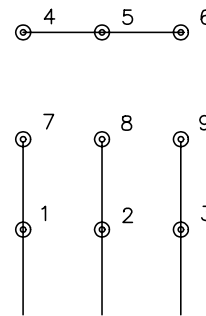




CD0005

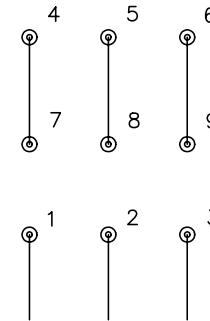


LOW VOLTAGE  
(2Y)



LINE

HIGH VOLTAGE  
(1Y)



LINE

NOTES:

1. INTERCHANGE ANY TWO LINE LEADS TO REVERSE ROTATION.
2. OPTIONAL THERMOSTATS ARE PROVIDED WHEN SPECIFIED.
3. ACTUAL NUMBER OF INTERNAL PARALLEL CIRCUITS MAY BE A MULTIPLE OF THOSE SHOWN ABOVE.
4. LEAD COLORS ARE OPTIONAL. LEADS MUST ALWAYS BE NUMBERED AS SHOWN.

REV. DESC: REVISE TO SHOW OPTIONAL COLORS			
REV. LTR: E	BY: JLP	REVISED: 01/19/99 10:15	TDR: 0171435
90000		FILE: AAA00005140	MDL: -
		MTL: -	

**BALDOR ELECTRIC Co.**

3PH, DV, 9 LEADS

CD0005