

# **BALDOR**® • *RELIANCE*

## **Product Information Packet**

# **EHM2531T-8**

**25HP, 1770RPM, 3PH, 60HZ, 284T, 4046M, OPSB, F1**

Copyright © All product information within this document is subject to Baldor Electric Company copyright © protection, unless otherwise noted.

Part Detail							
Revision:	E	Status:	PRD/A	Change #:		Proprietary:	No
Type:	AC	Prod. Type:	4046M	Elec. Spec:	40WGW950	CD Diagram:	
Enclosure:	OPSB	Mfg Plant:		Mech. Spec:	40J098	Layout:	
Frame:	284T	Mounting:	F1	Poles:	04	Created Date:	02-09-2010
Base:	RG	Rotation:	R	Insulation:	F	Eff. Date:	04-19-2012
Leads:	6#10	Literature:		Elec. Diagram:		Replaced By:	

**Nameplate NP2094E06B03**

CAT.NO.	EHM2531T-8						
SPEC.	40J098W950G1						
HP	25						
VOLTS	200						
AMPS	69.5						
RPM	1770						
FRAME	284T	HZ	60	PH	3		
SER.F.	1.15	CODE	G	DES	B	CL	F
NEMA-NOM-EFF	94.1	PF	82				
RATING	40C AMB-CONT						
CC	010A	USABLE AT 208V	69.7				
DE	6311	ODE	6309				
AUTO		MANUAL		NONE			
ENCL	OPSB	SN					
BLANK							

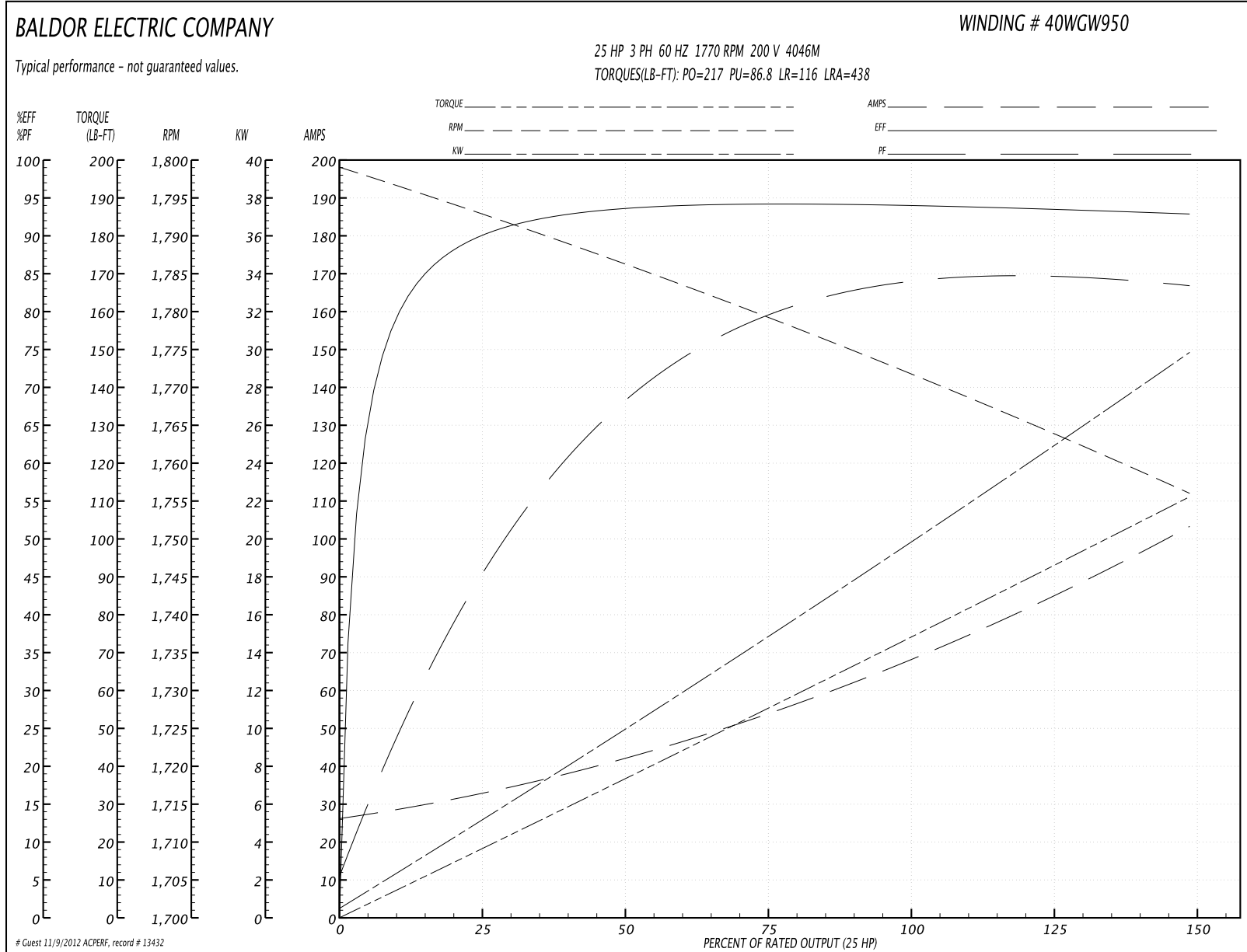
Parts List		
Part Number	Description	Quantity
SA190726	SA 40J098W950G1	1.000 EA
RA178395	RA 40J098W950G1	1.000 EA
S/P107-000-006	SUPER-E(284 FR. & UP)-ZK PLANT,POLYREX E	1.000 EA
HA6361A01	LIFTING LUG FOR 37, 39 & 40 FRAME (AUTOP	2.000 EA
40CB4000A01	CONDUIT BOX 40, STAMPED	1.000 EA
WD1000B16	KPA-4C BURNDY TERMINAL	1.000 EA
40EP3200A02	STD FREP OPEN 309 BRG	1.000 EA
HW5100A11	W3917-042 WVY WSHR (WB)	1.000 EA
40EP3200B31	PUEP OPEN 311 BRG W/SH GND MTG	1.000 EA
84XN0540J08	5-40 X 1/2" SHCS, BLACK OXIDE	2.000 EA
XY3816A12	3/8-16 FINISHED NUT	8.000 EA
39CB4500A01	CONDUIT BOX LID 39, STAMPED, AUTOPHORETI	1.000 EA
51XF2520A08	SCREW, HEX SER SLT HD, ZN 1/4-20 X .50 L	2.000 EA
51XF2520A08	SCREW, HEX SER SLT HD, ZN 1/4-20 X .50 L	2.000 EA
HW2501H28	KEY, 1/2 SQ X 3.250	1.000 EA
LB5040	INSTRUCTION TAG, AC & DC	1.000 EA
HA4051A00	PLASTIC CAP FOR GREASE FITTING	1.000 EA
HW4500A20	1/8NPT SL PIPE PLUG	2.000 EA
40AD2002A01	LEXAN BAFFLE 40 FR OPEN	1.000 EA
MJ1000A75	GREASE, POLYREX EM EXXON	0.050 LB
HW4500A20	1/8NPT SL PIPE PLUG	2.000 EA
HA4051A00	PLASTIC CAP FOR GREASE FITTING	1.000 EA
40AD2002A01	LEXAN BAFFLE 40 FR OPEN	1.000 EA
HA3154A03	STUD, 3/8-16 X 17.75	4.000 EA

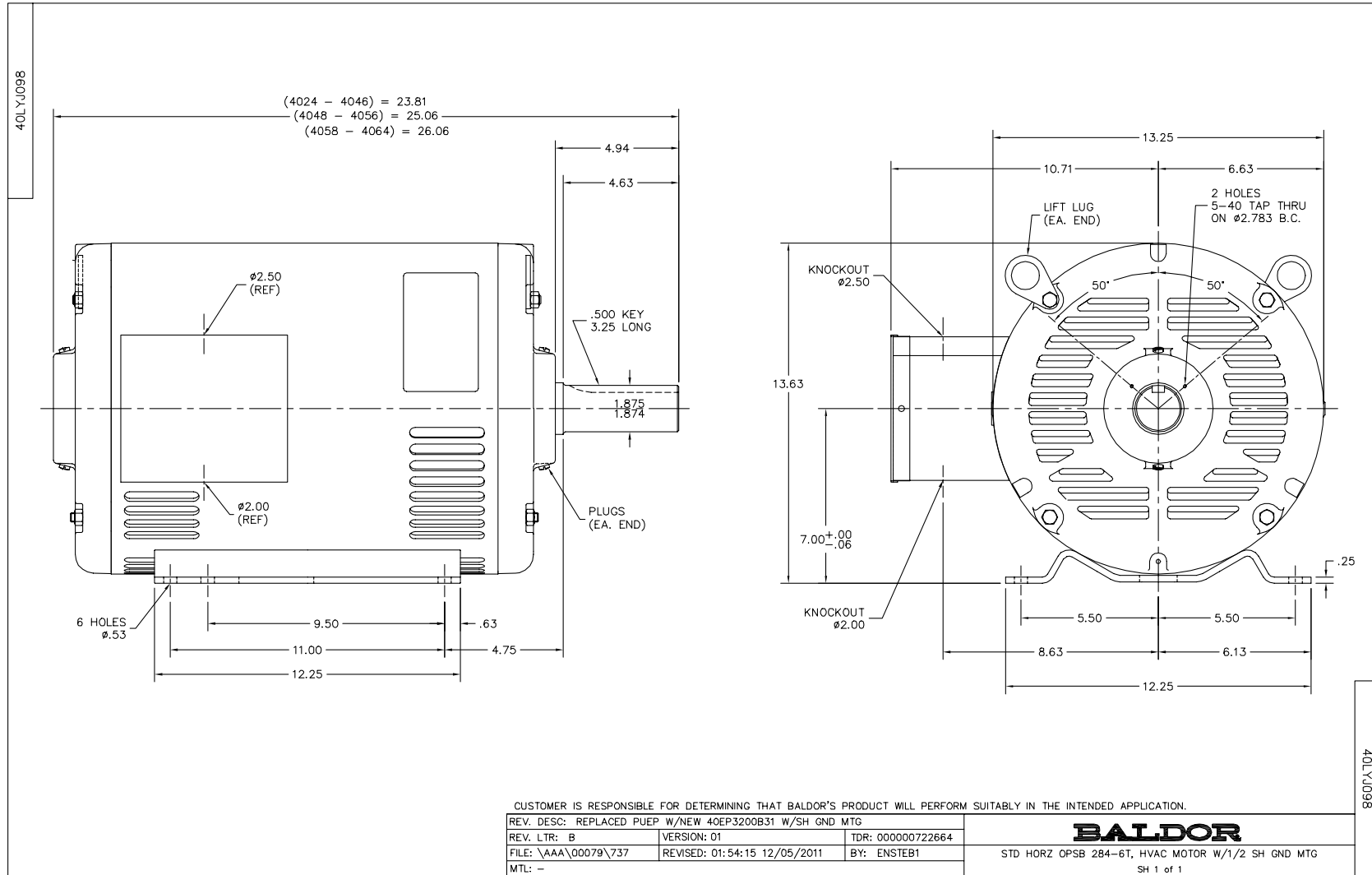
Parts List (continued)		
Part Number	Description	Quantity
MG1000G27	PAINT- S9282E CHARCOAL GREY	0.070 GA
LB1125C02	SUPER-E (STOCK CTN LABEL SUPER-E WITH FL	2.000 EA
LB1357	ENERGY GUIDE LABEL (BOX LABEL)	1.000 SH
LC0695	CONNECTION LABEL	1.000 EA
NP2094E06B03	NP LABEL W/BARCODE (PREM EFF HVAC MTR)	1.000 EA
40PA1000	PACKAGING GROUP	1.000 EA

**Performance Data at 200V, 60Hz, 25.0HP (Typical performance - Not guaranteed values)**

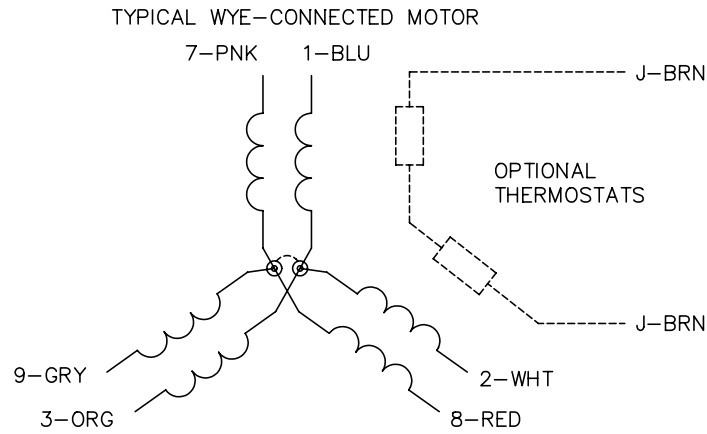
General Characteristics							
Full Load Torque:	74.1 LB-FT			Start Configuration:	DOL		
No-Load Current:	27.3 Amps			Break-Down Torque:	217.0 LB-FT		
Line-line Res. @ 25°C.:	0.0516 Ohms A Ph / 0.0 Ohms B Ph			Pull-Up Torque:	86.8 LB-FT		
Temp. Rise @ Rated Load:	24 C			Locked-Rotor Torque:	116.0 LB-FT		
Temp. Rise @ S.F. Load:	32 C			Starting Current:	438.0 Amps		
Load Characteristics							
% of Rated Load	25	50	75	100	125	150	S.F.
Power Factor:	48.0	69.0	79.0	83.0	85.0	85.0	84.0
Efficiency:	89.8	93.4	94.2	94.1	93.6	92.8	93.8
Speed:	1793.0	1786.0	1779.0	1772.0	1764.0	1756.0	1767.0
Line Amperes:	31.5	41.6	54.5	69.0	85.1	102.6	78.7

Performance Graph at 200V, 60Hz, 25.0HP Typical performance - Not guaranteed values

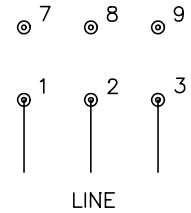




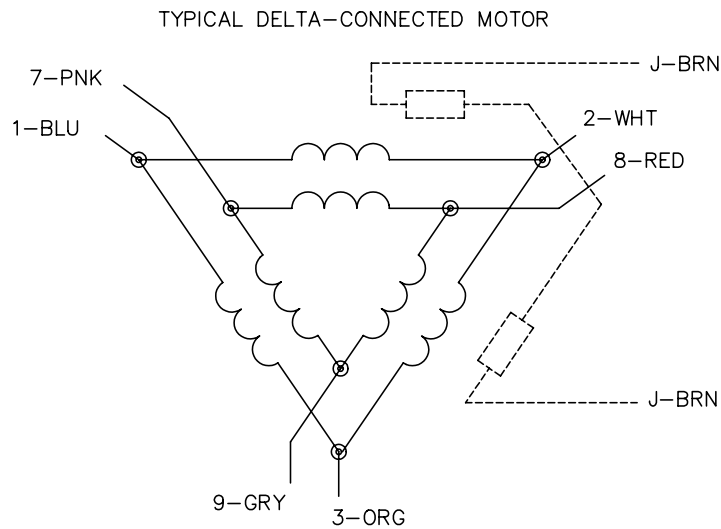
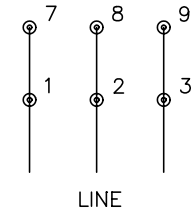
CD0695



START CONNECTION



RUN CONNECTION



NOTES:

1. MOTOR MAY BE WYE CONNECTED OR DELTA CONNECTED.
2. INTERCHANGE ANY TWO LINE LEADS TO REVERSE ROTATION.
3. OPTIONAL THERMOSTATS ARE PROVIDED WHEN SPECIFIED.
4. ACTUAL NUMBER OF INTERNAL PARALLEL CIRCUITS MAY VARY.
5. LEAD COLORS ARE OPTIONAL. LEADS MUST ALWAYS BE NUMBERED AS SHOWN.

REV. DESC: REVISE TO SHOW OPTIONAL COLORS			
REV. LTR: C	BY: JLP	REVISED: 01/21/99 3:19	TDR: 0171435
969000		FILE: AAA00005151	MDL: -
		MTL: -	

**BALDOR ELECTRIC Co.**

3PH, SV, 6 LEADS, PART WINDING START

CD0695