

BALDOR® • RELIANCE

Product Information Packet

WALKER INDUSTRIAL PRODUCTS, INC.

EJM7013

1HP,3450RPM,3PH,60HZ,56J,3418M,XPFC,F1,N

Part Detail							
Revision:	-	Status:	PRD/A	Change #:		Proprietary:	No
Type:	AC	Prod. Type:	3418M	Elec. Spec:	34WGR348	CD Diagram:	CD0005
Enclosure:	XPFC	Mfg Plant:		Mech. Spec:	34-5588	Layout:	34LY5588
Frame:	56J	Mounting:	F1	Poles:	02	Created Date:	11-10-2015
Base:	N	Rotation:	R	Insulation:	B	Eff. Date:	11-16-2015
Leads:	9#18					Replaced By:	
Literature:		Elec. Diagram:					

Nameplate NP1426XPSLEV					
NO.		CC			
SER.					
SPEC.	34-5588R348G1				
CAT.NO.	EJM7013				
HP	1	T. CODE	T3C		
VOLTS	230/460				
AMPS	2.8/1.4				
RPM	3450				
HZ	60	PH	3	CL	B
SER.F.	1.00	DES	B	CODE	L
RATING	40C AMB-CONT				
FRAME	56J	NEMA-NOM-EFF	77		
USABLE AT 208V	2.9	PF	83		
BLANK					

AC Induction Motor Performance Data

Record # 53912 - Typical performance - not guaranteed values

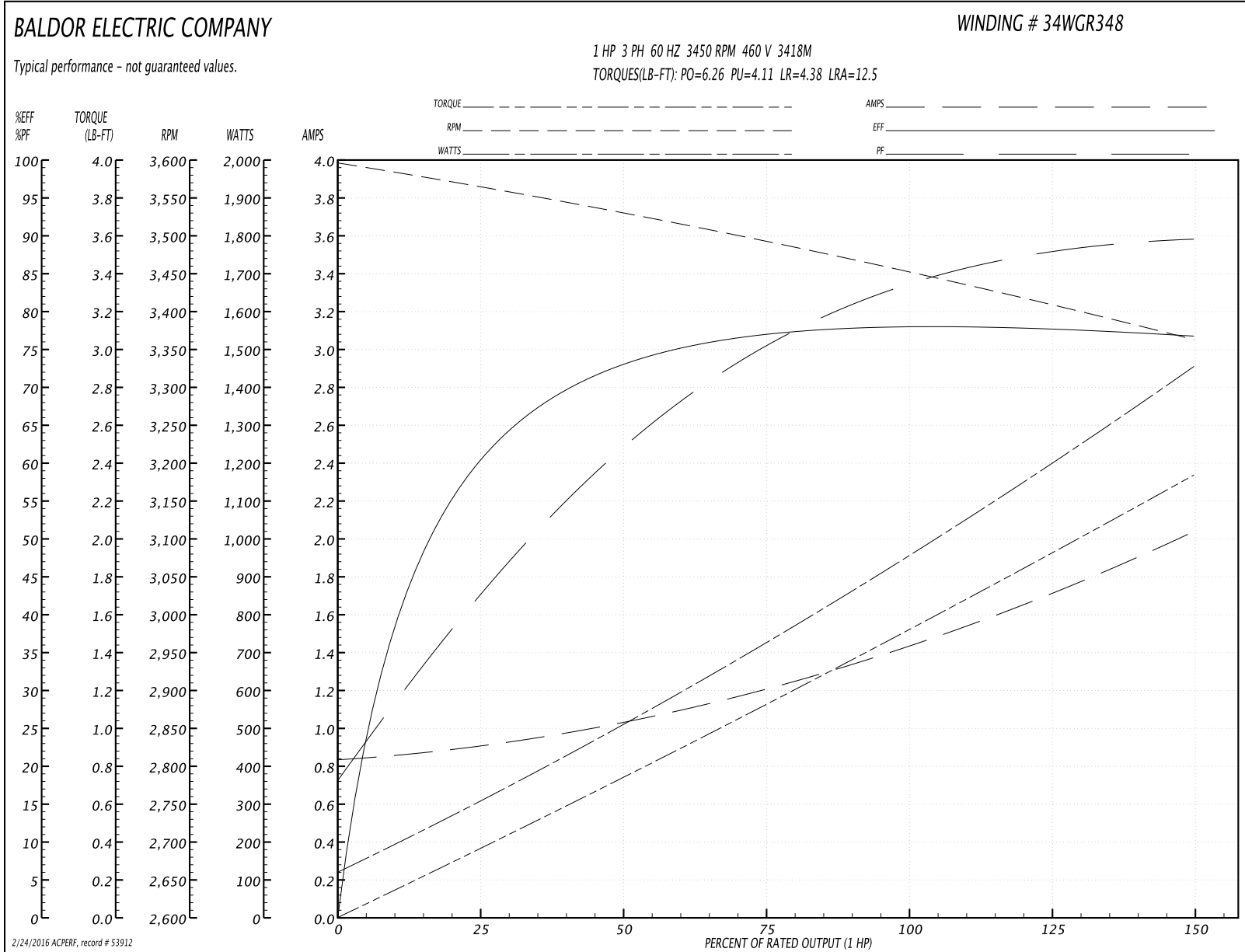
Winding: 34WGR348-R002	Type: 3418M	Enclosure: XPFC
-------------------------------	--------------------	------------------------

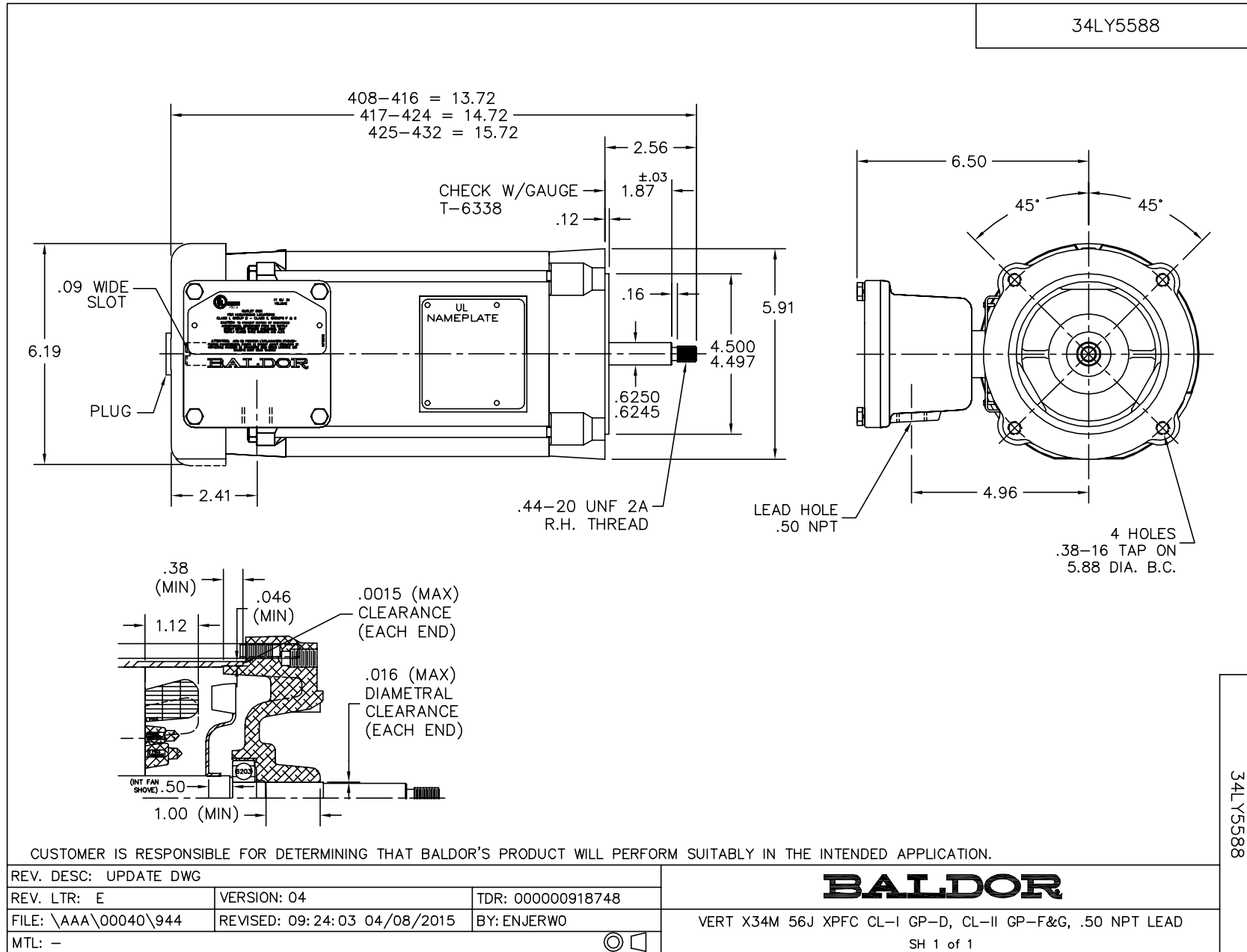
Nameplate Data				460 V, 60 Hz: High Voltage Connection	
Rated Output (HP)	1			Full Load Torque	1.52 LB-FT
Volts	230/460			Start Configuration	direct on line
Full Load Amps	2.8/1.4			Breakdown Torque	6.26 LB-FT
R.P.M.	3450			Pull-up Torque	4.11 LB-FT
Hz	60	Phase	3	Locked-rotor Torque	4.38 LB-FT
NEMA Design Code	B	KVA Code	L	Starting Current	12.5 A
Service Factor (S.F.)	1			No-load Current	0.844 A
NEMA Nom. Eff.	77	Power Factor	83	Line-line Res. @ 25°C	17.1 Ω
Rating - Duty	40C AMB-CONT			Temp. Rise @ Rated Load	59°C
				Rotor inertia	0.0167 LB-FT ²

Load Characteristics 460 V, 60 Hz, 1 HP

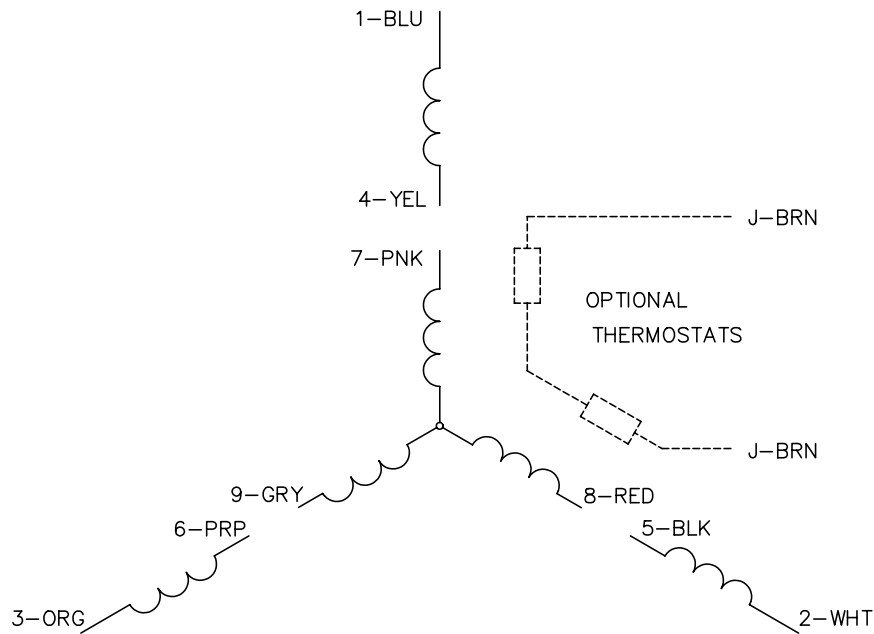
% of Rated Load	25	50	75	100	125	150
Power Factor	44	63	75	83	87	90
Efficiency	60.2	72.8	76.8	78.4	77.9	76.6
Speed	3561	3528	3494	3455	3411	3361
Line amperes	0.898	1.02	1.21	1.44	1.72	2.03

Performance Graph at 460V, 60Hz, 1.0HP Typical performance - Not guaranteed values

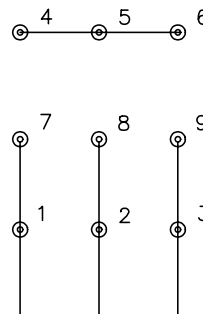




CD0005

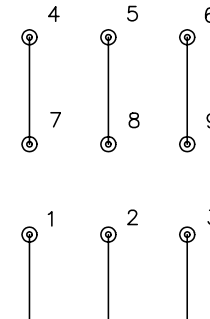


LOW VOLTAGE
(2Y)



LINE

HIGH VOLTAGE
(1Y)



LINE

NOTES:

1. INTERCHANGE ANY TWO LINE LEADS TO REVERSE ROTATION.
2. OPTIONAL THERMOSTATS ARE PROVIDED WHEN SPECIFIED.
3. ACTUAL NUMBER OF INTERNAL PARALLEL CIRCUITS MAY BE A MULTIPLE OF THOSE SHOWN ABOVE.
4. LEAD COLORS ARE OPTIONAL. LEADS MUST ALWAYS BE NUMBERED AS SHOWN.

REV. DESC: REVISE TO SHOW OPTIONAL COLORS			
REV. LTR: E	BY: JLP	REVISED: 01/19/99 10:15	TDR: 0171435
90000		FILE: AAA00005140	MDL: -
		MTL: -	

BALDOR ELECTRIC Co.

3PH, DV, 9 LEADS

CD0005