

# **BALDOR**® • ***RELIANCE***

## **Product Information Packet**

# **EJMM3218T**

**5HP,1760RPM,3PH,60HZ,184JM,3640M,OPSB,F1**

Copyright © All product information within this document is subject to Baldor Electric Company copyright © protection, unless otherwise noted.

| Part Detail |       |             |       |                |          |               |            |
|-------------|-------|-------------|-------|----------------|----------|---------------|------------|
| Revision:   | A     | Status:     | PRD/A | Change #:      |          | Proprietary:  | No         |
| Type:       | AC    | Prod. Type: | 3640M | Elec. Spec:    | 36WGS270 | CD Diagram:   |            |
| Enclosure:  | OPSB  | Mfg Plant:  |       | Mech. Spec:    | 36G687   | Layout:       |            |
| Frame:      | 184JM | Mounting:   | F1    | Poles:         | 04       | Created Date: | 07-30-2010 |
| Base:       | RG    | Rotation:   | R     | Insulation:    | F        | Eff. Date:    | 01-14-2011 |
| Leads:      | 9#16  | Literature: |       | Elec. Diagram: |          | Replaced By:  |            |

| Nameplate NP1259L |              |                |      |     |   |    |   |
|-------------------|--------------|----------------|------|-----|---|----|---|
| CAT.NO.           | EJMM3218T    |                |      |     |   |    |   |
| SPEC.             | 36G687S270G1 |                |      |     |   |    |   |
| HP                | 5            |                |      |     |   |    |   |
| VOLTS             | 208-230/460  |                |      |     |   |    |   |
| AMP               | 14-13.2/6.6  |                |      |     |   |    |   |
| RPM               | 1750         |                |      |     |   |    |   |
| FRAME             | 184JM        | HZ             | 60   | PH  | 3 |    |   |
| SER.F.            | 1.15         | CODE           | J    | DES | B | CL | F |
| NEMA-NOM-EFF      | 89.5         | PF             | 80   |     |   |    |   |
| RATING            | 40C AMB-CONT |                |      |     |   |    |   |
| CC                | 010A         | USABLE AT 208V | 14   |     |   |    |   |
| DE                | 6207         | ODE            | 6205 |     |   |    |   |
| ENCL              | OPSB         | SN             |      |     |   |    |   |
|                   |              |                |      |     |   |    |   |

| Parts List     |  |          |
|----------------|--|----------|
| Part Number    | Description                              | Quantity |
| SA200627       | SA 36G687S270G1                          | 1.000 EA |
| RA187938       | RA 36G687S270G1                          | 1.000 EA |
| S/P107-000-001 | SUPER E PROC'S-FS & WS PLTS-POLYREX EM G | 1.000 EA |
| 36CB3004       | 36 CB CASTING W/1.09 DIA LEAD HOLE @ 6:0 | 1.000 EA |
| 51XB1016A08    | 10-16X 1/2HXWSSLD SERTYB                 | 2.000 EA |
| 11XW1032G06    | 10-32 X .38, TAPTITE II, HEX WSHR SLTD U | 1.000 EA |
| HW3001B01      | 003SS CUP WASHER, FOR #8 SCREW           | 1.000 EA |
| 36EP3200A25    | FR ENDPLATE, MACH                        | 1.000 EA |
| HA1103A08      | RODENT SCREEN, 36 FRAME, OPEN, FRONT END | 1.000 EA |
| 51XW1032A06    | 10-32 X .38, TAPTITE II, HEX WSHR SLTD S | 4.000 EA |
| HW1000A10      | #10 FLAT WASHER (SAE)                    | 4.000 EA |
| HW4500A01      | 1641B(ALEMITE)400 UNIV, GREASE FITT      | 1.000 EA |
| HW4500A17      | 317400 ALEMITE GREASE RELIEF             | 1.000 EA |
| HW5100A05      | WVY WSHR F/205 & 304 BRGS                | 1.000 EA |
| 36EP3405A04    | PUEP 182-4C OPEN 207 BRG W/ TSLV, GR SR  | 1.000 EA |
| HA1102A11      | SCREEN, RODENT FOR 36EP3405              | 2.000 EA |
| 51XW1032A06    | 10-32 X .38, TAPTITE II, HEX WSHR SLTD S | 4.000 EA |
| HW1000A10      | #10 FLAT WASHER (SAE)                    | 4.000 EA |
| HW4500A01      | 1641B(ALEMITE)400 UNIV, GREASE FITT      | 1.000 EA |
| HW4500A17      | 317400 ALEMITE GREASE RELIEF             | 1.000 EA |
| 10XN2520A24    | 1/4-20X 1 1/2 HEX HD X                   | 4.000 EA |
| HW1001A25      | LOCKWASHER 1/4, ZINC PLT .493 OD, .255 I | 4.000 EA |
| 36CB4516       | 36 LIPPED CB LID                         | 1.000 EA |
| 51XW0832A07    | 8-32 X .44, TAPTITE II, HEX WSHR SLTD SE | 4.000 EA |

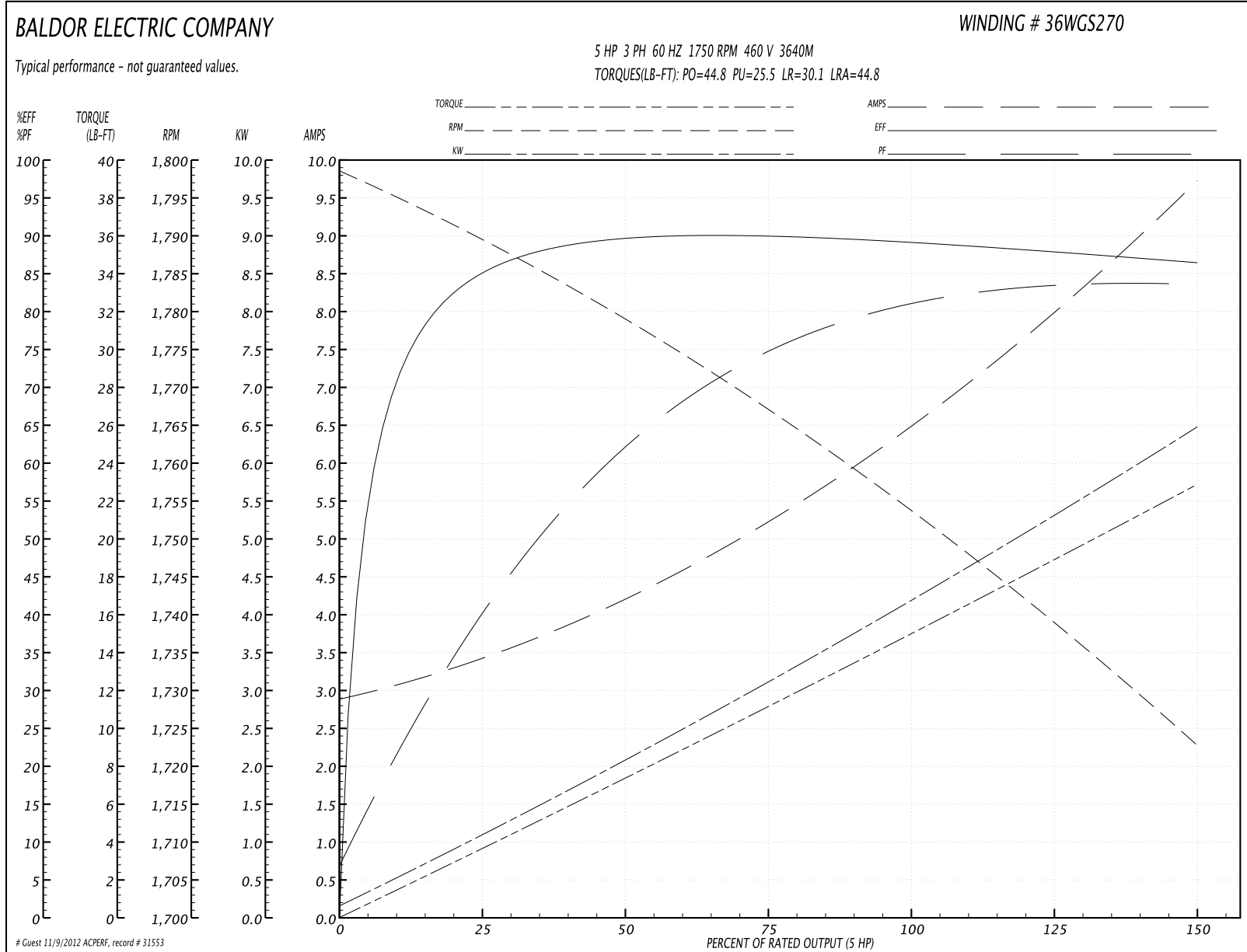
| Parts List (continued) |  |          |
|------------------------|--|----------|
| Part Number            | Description                              | Quantity |
| HA1005A07SP            | SLINGER, OD 2.25, ID 1.344, 307 BRG      | 1.000 EA |
| HW2501D13SP            | KEY, 3/16 SQ X 1.375                     | 1.000 EA |
| HA7000A01              | KEY RETAINER 7/8" DIA SHAFT              | 1.000 EA |
| 85XU0407S04            | 4X1/4 U DRIVE PIN STAINLESS              | 2.000 EA |
| HW3200A01              | 3/8-16X3/4 I-BLT WELDED F/S              | 1.000 EA |
| MJ1000A75              | GREASE, POLYREX EM EXXON                 | 0.050 LB |
| MG1000Y03              | WILKO 689.710 GOLD PAINT SUPER E         | 0.022 GA |
| LB1115                 | LABEL,LIFTING DEVICE                     | 1.000 EA |
| HA3101A28              | THRUBOLT 1/4-20 X 12.500 OHIO ROD        | 4.000 EA |
| 36AD2004A01            | BAFFLE PLATE,MOD 36-SLTD BAND MTRS DELTA | 2.000 EA |
| LC0005E01              | CONN.DIA./WARNING LABEL (LC0005/LB1119)  | 1.000 EA |
| LB1125C02              | SUPER-E (STOCK CTN LABEL SUPER-E WITH FL | 1.000 EA |
| LB1357                 | ENERGY GUIDE LABEL (BOX LABEL)           | 1.000 SH |
| NP1259L                | ALUM SUPER-E UL CSA-EEV CC NEMA PREMIUM  | 1.000 EA |
| G7PA1000               | PACKAGING GROUP / BALDOR                 | 1.000 EA |

**Performance Data at 460V, 60Hz, 5.0HP (Typical performance - Not guaranteed values)**

| General Characteristics  |                                 |                      |            |
|--------------------------|---------------------------------|----------------------|------------|
| Full Load Torque:        | 15.0 LB-FT                      | Start Configuration: | DOL        |
| No-Load Current:         | 2.97 Amps                       | Break-Down Torque:   | 44.8 LB-FT |
| Line-line Res. @ 25°C.:  | 2.632 Ohms A Ph / 0.0 Ohms B Ph | Pull-Up Torque:      | 25.5 LB-FT |
| Temp. Rise @ Rated Load: | 44 C                            | Locked-Rotor Torque: | 30.1 LB-FT |
| Temp. Rise @ S.F. Load:  | 56 C                            | Starting Current:    | 44.8 Amps  |

| Load Characteristics |        |        |        |        |        |        |        |
|----------------------|--------|--------|--------|--------|--------|--------|--------|
| % of Rated Load      | 25     | 50     | 75     | 100    | 125    | 150    | S.F.   |
| Power Factor:        | 42.0   | 64.0   | 75.0   | 80.0   | 83.0   | 84.0   | 82.0   |
| Efficiency:          | 85.4   | 89.7   | 90.2   | 89.5   | 88.2   | 86.4   | 88.7   |
| Speed:               | 1789.2 | 1778.5 | 1766.9 | 1753.8 | 1739.5 | 1722.1 | 1745.0 |
| Line Amperes:        | 3.33   | 4.14   | 5.26   | 6.59   | 8.05   | 9.68   | 7.47   |

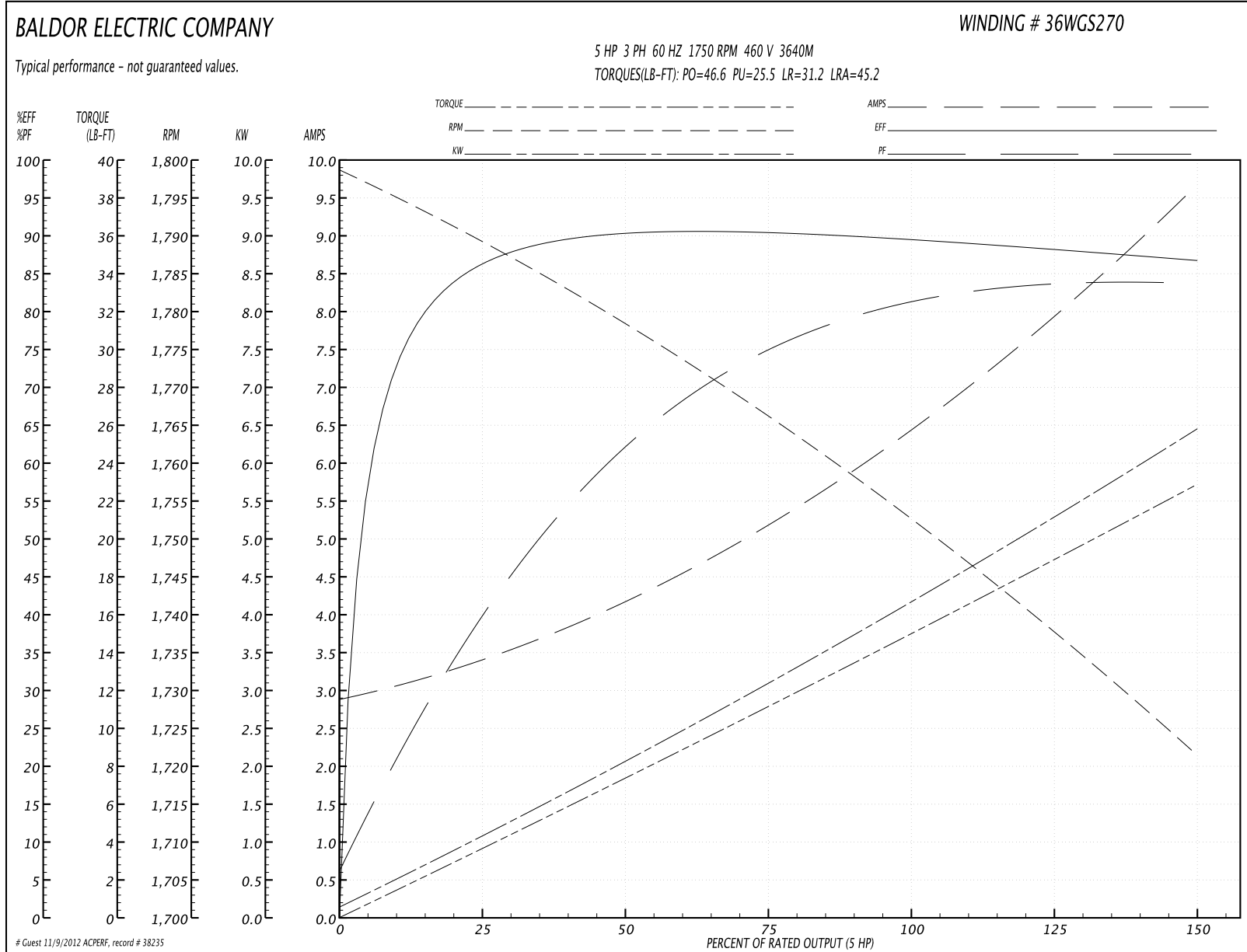
Performance Graph at 460V, 60Hz, 5.0HP Typical performance - Not guaranteed values



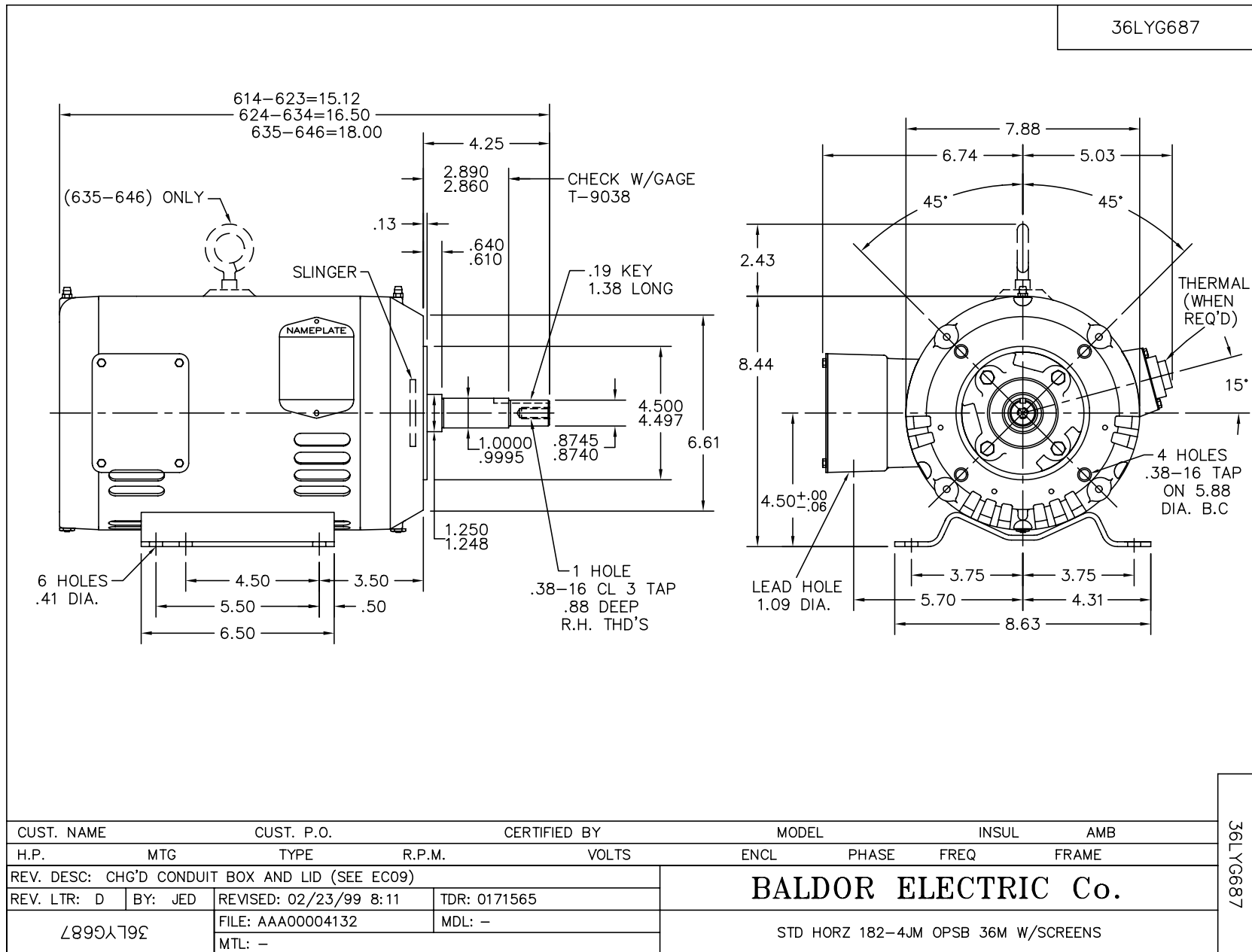
**Performance Data at 460V, 60Hz, 5.0HP (Typical performance - Not guaranteed values)**

| General Characteristics  |                                  |        |        |                      |            |        |        |
|--------------------------|----------------------------------|--------|--------|----------------------|------------|--------|--------|
| Full Load Torque:        | 15.0 LB-FT                       |        |        | Start Configuration: | DOL        |        |        |
| No-Load Current:         | 2.96 Amps                        |        |        | Break-Down Torque:   | 46.6 LB-FT |        |        |
| Line-line Res. @ 25°C.:  | 2.6272 Ohms A Ph / 0.0 Ohms B Ph |        |        | Pull-Up Torque:      | 25.5 LB-FT |        |        |
| Temp. Rise @ Rated Load: | 45 C                             |        |        | Locked-Rotor Torque: | 31.2 LB-FT |        |        |
| Temp. Rise @ S.F. Load:  | 56 C                             |        |        | Starting Current:    | 45.2 Amps  |        |        |
| Load Characteristics     |                                  |        |        |                      |            |        |        |
| % of Rated Load          | 25                               | 50     | 75     | 100                  | 125        | 150    | S.F.   |
| Power Factor:            | 42.0                             | 64.0   | 75.0   | 80.0                 | 83.0       | 84.0   | 82.0   |
| Efficiency:              | 86.1                             | 90.2   | 90.5   | 89.7                 | 88.3       | 86.6   | 88.9   |
| Speed:                   | 1788.8                           | 1778.1 | 1766.0 | 1752.7               | 1737.8     | 1721.1 | 1744.0 |
| Line Amperes:            | 3.33                             | 4.11   | 5.22   | 6.52                 | 8.02       | 9.62   | 7.42   |

Performance Graph at 460V, 60Hz, 5.0HP Typical performance - Not guaranteed values







CD0005

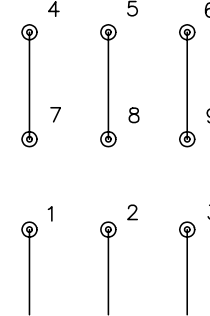


LOW VOLTAGE  
(2Y)



LINE

HIGH VOLTAGE  
(1Y)



LINE

NOTES:

1. INTERCHANGE ANY TWO LINE LEADS TO REVERSE ROTATION.
2. OPTIONAL THERMOSTATS ARE PROVIDED WHEN SPECIFIED.
3. ACTUAL NUMBER OF INTERNAL PARALLEL CIRCUITS MAY BE A MULTIPLE OF THOSE SHOWN ABOVE.
4. LEAD COLORS ARE OPTIONAL. LEADS MUST ALWAYS BE NUMBERED AS SHOWN.

|   |         |                         |              |
|---|---------|-------------------------|--------------|
| REV. DESC: REVISE TO SHOW OPTIONAL COLORS |         |                         |              |
| REV. LTR: E                               | BY: JLP | REVISED: 01/19/99 10:15 | TDR: 0171435 |
| 90000                                     |         | FILE: AAA00005140       | MDL: -       |
|   |         | MTL: -                  |              |

**BALDOR ELECTRIC Co.**

3PH, DV, 9 LEADS

CD0005